

CKT NO.	FROM	CIRCUIT TO	CONDUCTORS			
			SETS	QTY	SIZE	COND. TYPE
SR1	MCC-1	STERN JET-A SFP-1	1	3	6	8 XH9W
SR2	MCC-1	STERN JET-A SFP-2	1	3	6	8 XH9W
SR3	MCC-1	STERN AV GAS SFP-3	1	3	6	8 XH9W
LR1	MCC-1	MILLIONAIRE JET-A LFP-1	1	3	6	8 XH9W
LR2	MCC-1	MILLIONAIRE JET-A LFP-2	1	3	6	8 XH9W
LR3	MCC-1	MILLIONAIRE AV GAS LFP-3	1	3	6	8 XH9W
AR1	MCC-1	ADD. EXP. JET-A AFP-1	1	3	6	8 XH9W
AR2	MCC-1	ADD. EXP. JET-A AFP-2	1	3	6	8 XH9W
AR3	MCC-1	ADD. EXP. AV GAS AFP-3	1	3	6	8 XH9W
CR1	MCC-1	CHERRY JET-A CFP-1	1	3	6	8 XH9W
CR2	MCC-1	CHERRY JET-A CFP-2	1	3	6	8 XH9W
MR1	MCC-1	MERCURY JET-A MFP-1	1	3	6	8 XH9W
MR2	MCC-1	MERCURY JET-A MFP-2	1	3	6	8 XH9W
MR3	MCC-1	MERCURY AV GAS MFP-3	1	3	6	8 XH9W
PR1	TRANSFORMER	MCC-1	2	4	500	2/0 XH9W
PR2	GEN RECEPTACLE	MCC-1	1	4	1/0	6 XH9W

NOTES:

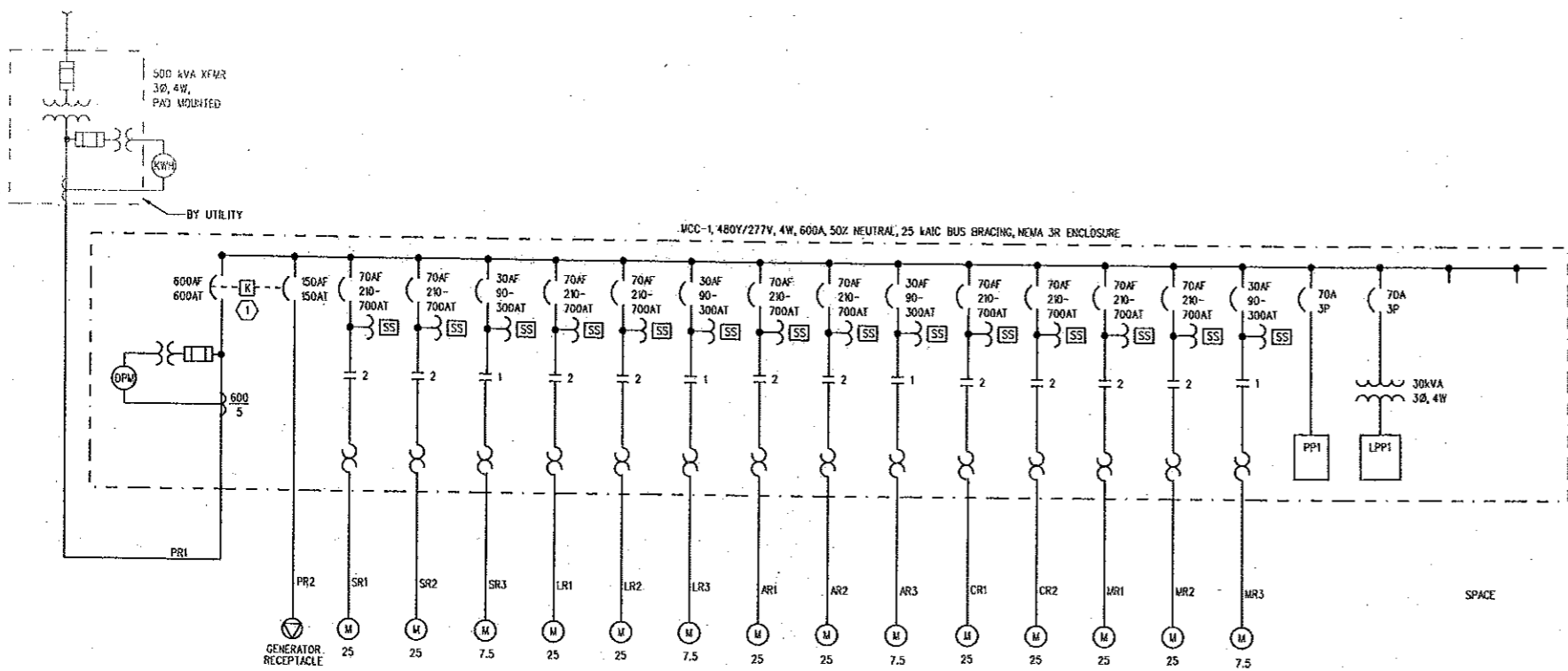
1. ALL PUMP CONTROLLER CIRCUIT BREAKERS SHALL BE PADLOCKABLE.
2. ELEVATION IS GENERAL, ADJUST AS REQUIRED FOR EQUIPMENT PROVIDED.
3. PROVIDE MCC1 IN NEM 3R ENCLOSURE 5" WIDER THAN MCC1 SEE SHEET FE-4.

CKT NO.	TRIP AMPS	NO. POLES	WIRE / CONDUIT	GRD. WIRE	LOAD SERVED	LOAD VA	LOAD VA	LOAD SERVED	GRD. WIRE	WIRE / CONDUIT	NO. POLES	TRIP AMPS	CKT. NO.
1	20	1	2-#10, 1"	#12	LIGHTS - CANDY UNLOAD	4800	A 500	EXIT GATE OPERATOR	#12	3-#10, 1"	3	15	2
3	20	1	2-#10, 1"	#12	LIGHTS - CANDY LOAD	4800	B 500						
7	15	3	3-#12, 1"	#12	ENTRANCE GATE OPERATOR	500	A 500	LIGHTS - AREA LIGHTING	#12	2-#12, 1"	1	15	8
13	20	3			SPACE	500	A 500	SPACE					
					SPACE	500	B 500	SPACE					
					SPACE	500	C 500	SPACE					
					SPACE	500	A 500	SPACE					
					SPACE	500	B 500	SPACE					
					SPACE	500	C 500	SPACE					

TOTAL CONNECTED LOAD = 15 KVA X 90% DEMAND FACTOR = 13.7 KVA ESTIMATED DEMAND LOAD
PHASE BALANCE (KVA) - A: 4.8, B: 6.3, C: 1.5

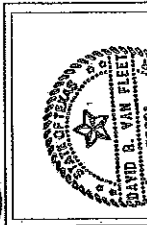
CKT NO.	TRIP AMPS	NO. POLES	WIRE / CONDUIT	GRD. WIRE	LOAD SERVED	LOAD VA	LOAD VA	LOAD SERVED	GRD. WIRE	WIRE / CONDUIT	NO. POLES	TRIP AMPS	CKT. NO.
1	15	1	2-#12, 1"	#12	LOADING STATIONS	500	A 1500	DISPENSER - MOGAS SIDE	#12	2-#12, 1"	1	20	2
3	30	1	2-#10, 1"	#10	MSP-1, CSP-1	2400	B 1500	DISPENSER - DIESEL SIDE	#12	2-#12, 1"	1	20	4
5	30	1	2-#10, 1"	#10	ASP-1, LSP-1	2400	C 1200	SSP-1	#12	2-#12, 1"	1	20	6
7	20	1	2-#12, 1"	#12	RECEPTACLE	100	A 2000	UPS (PLC POWER)	#10	2-#10, 3/4"	1	30	8
9	15	1			SPACE	500	B 500	D/W SEPARATOR PANEL	#12	2-#12, 1"	1	20	10
11	15	1			SPACE	500	C 200	FIRE ALARM CONTROL PANEL	#12	2-#12, 1"	1	15	12
13	15	1			SPACE	500	A 100	MERCURY METER PRESETS	#12	2-#12, 1"	1	15	16
					SPACE	100	B 100	CHERRY METER PRESETS	#12	2-#12, 1"	1	15	18
					SPACE	100	C 100	ADD. EXP. METER PRESETS	#12	2-#12, 1"	1	15	20
					SPACE	100	A 100	MILLIONAIRE METER PRESETS	#12	2-#12, 1"	1	15	22
					SPACE	100	B 100	STERN METER PRESETS	#12	2-#12, 1"	1	15	24

TOTAL CONNECTED LOAD = 14.4 KVA X 82% DEMAND FACTOR = 11.6 KVA ESTIMATED DEMAND LOAD
PHASE BALANCE (KVA) - A: 4.8, B: 5.1, C: 4.5



KEYED NOTES:
 ① PROVIDE KEYED INTERLOCK BETWEEN BREAKERS SUCH THAT ONLY ONE BREAKER SHALL BE ON AT ONE TIME. KEY SHALL BE CAPTIVE IN THE ON POSITION.

ONE-LINE DIAGRAM - MOTOR CONTROL CENTERS



ISSUED FOR BID
STAGE OF PLANS
2/15/14-0000-0000201 CAD FILE NO.

Burns & McDonnell
SINCE 1938

Washington Group International
Integrated Engineering, Construction, and Management Solutions
Phone: 206-465-9999 Fax: 206-465-9900

BULK FUEL STORAGE AND DISPENSING SYSTEM
ONE-LINE DIAGRAM AND MCC ELEVATION

DATE: OCTOBER
SHEET 17