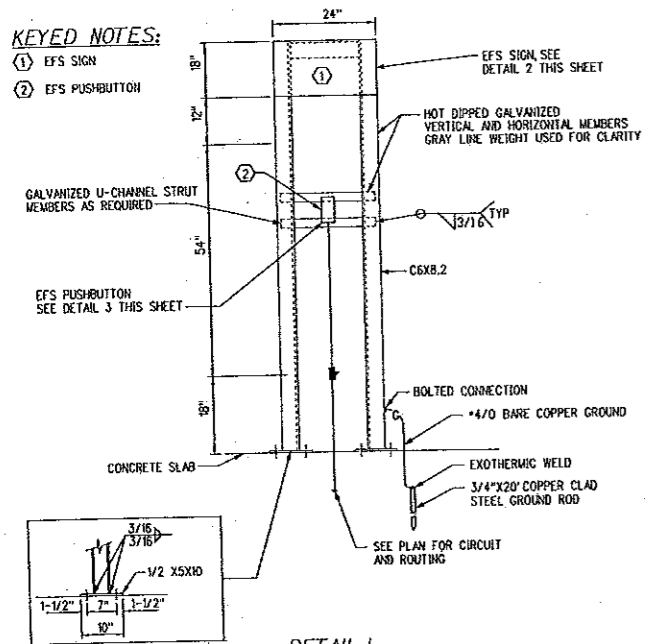
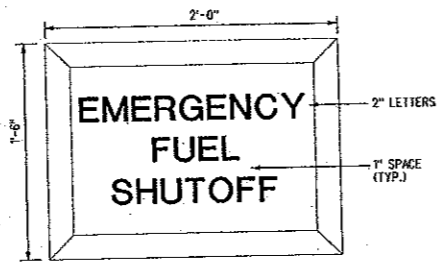


**KEYED NOTES:**

- ① EFS SIGN
- ② EFS PUSHBUTTON



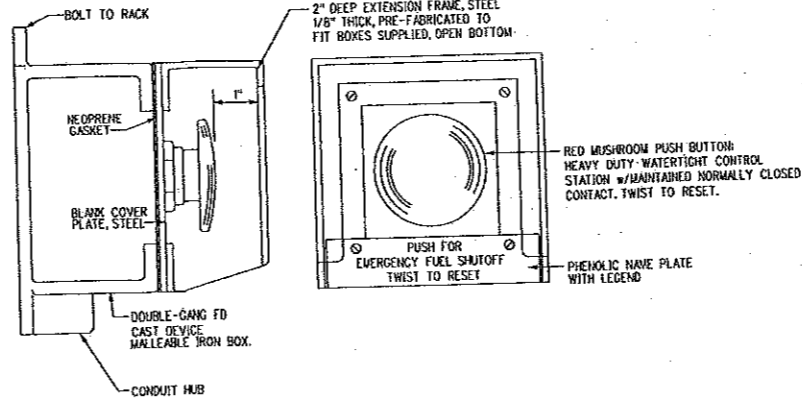
**DETAIL 1**  
RACK MOUNT EFS STATION



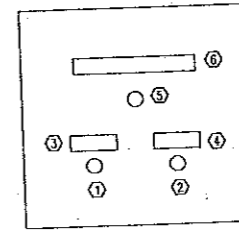
**NOTES:**

1. TWO-COLOR LAMINATED FIBERGLASS, 1/4" THICKNESS WITH CONTRASTING COLOR FOR ENGRAVED EXPOSED COLOR AND SERIES 3700 BRUSHED ALUMINUM MOUNTING FRAME AS MANUFACTURED BY BEST MANUFACTURING COMPANY FOR EXTERIOR USE.
2. TWO INCH AND ONE INCH HIGH LETTERING ON PLATE AS INDICATED.
3. EUROSTILE BOLD EXTENDED STYLE LETTERS.
4. COLORS: LETTERS - WHITE BACKGROUND - U.S. STANDARD RED.
5. LEGEND: AS SHOWN

**DETAIL 2 - EFS SIGN**



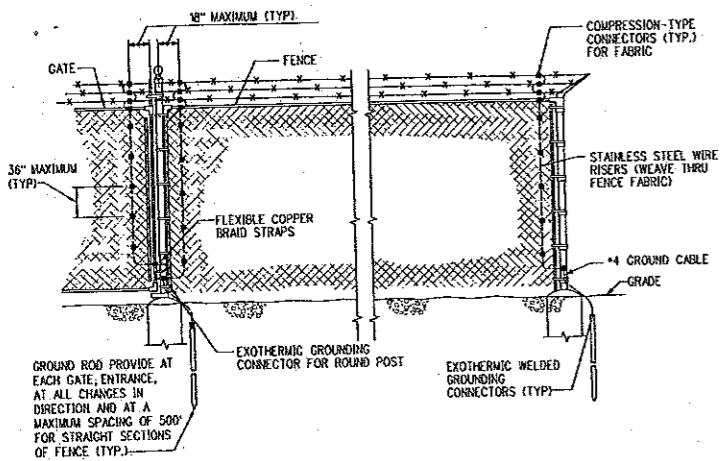
**DETAIL 3**  
EFS PUSHBUTTON



**KEYED NOTES:**

- ① EFS PUSHBUTTON (SIMILAR TO PUSHBUTTON IN DETAIL 3, THIS DRAWING).
- ② EFS RESET PUSHBUTTON.
- ③ NAMEPLATE "PUSH FOR EMERGENCY FUEL SHUTOFF, TWIST TO RESET".
- ④ NAMEPLATE "EMERGENCY FUEL SHUTOFF SYSTEM RESET".
- ⑤ EFS RED ALARM LIGHT.
- ⑥ NAMEPLATE "EMERGENCY FUEL SHUTOFF SYSTEM ACTUATED".

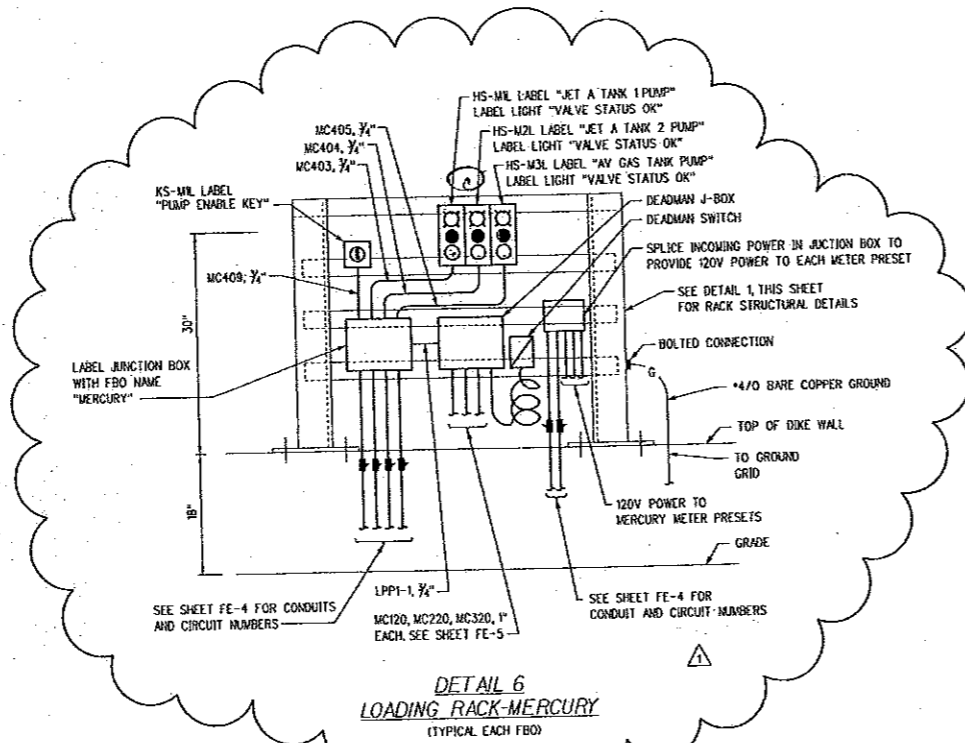
**DETAIL 4**  
EFS CONTROL PANEL  
(FRONT OF MCC-1)



**NOTES:**

1. DELETE STRAP AND WIRE RISER THROUGH GATE AT SLIDING GATES.

**DETAIL 5**  
FENCE GROUNDING



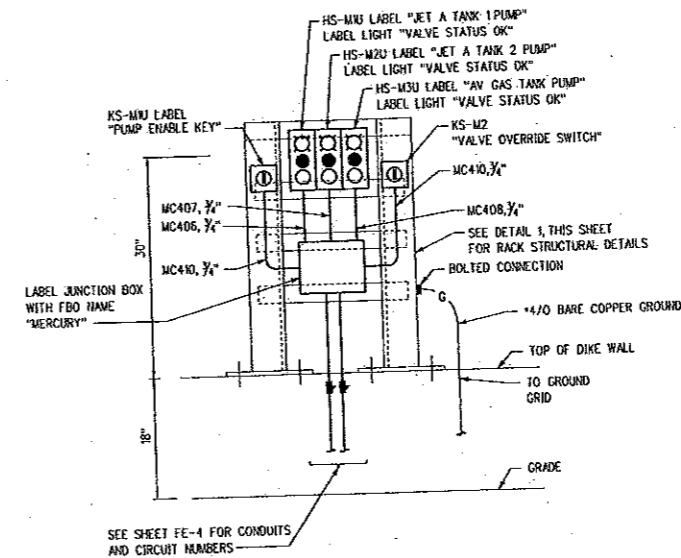
**DETAIL 6**  
LOADING RACK-MERCURY  
(TYPICAL EACH FBO)

DEVICE NUMBERS AND CIRCUIT NUMBERS  
SIMILAR EACH FBO:

- M = MERCURY
- C = CHERRY
- A = ADDISON EXPRESS
- L = MILLIONAIR
- S = STERN

**NOTES:**

1. SEE SHEETS FE-4 AND FE-5 FOR RACK LOCATIONS.
2. SEE SHEET FE-5 FOR TABLE OF CORRESPONDING DEVICE AND CIRCUIT NUMBERS.
3. SEE SHEET FE-11 FOR LOADING STATION WIRING DIAGRAM.
4. ALL EQUIPMENT ON RACK SHALL BE EXPLOSION PROOF.
5. SEE SHEET FE-6 FOR CONTROL CIRCUIT SCHEDULE. SEE SHEET FE-7 FOR CONDUIT SCHEDULE.



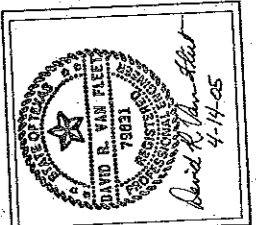
**DETAIL 7**  
UNLOADING RACK-MERCURY  
(TYPICAL EACH FBO)

DEVICE NUMBERS AND CIRCUIT NUMBERS  
SIMILAR EACH FBO:

- M = MERCURY
- C = CHERRY
- A = ADDISON EXPRESS
- L = MILLIONAIR
- S = STERN

**NOTES:**

1. SEE SHEETS FE-4 AND FE-5 FOR RACK LOCATIONS.
2. SEE SHEET FE-5 FOR TABLE OF CORRESPONDING DEVICE AND CIRCUIT NUMBERS.
3. SEE SHEET FE-10 FOR PUMP WIRING DIAGRAM.
4. ALL EQUIPMENT ON RACK SHALL BE EXPLOSION PROOF.
5. SEE SHEET FE-6 FOR CONTROL CIRCUIT SCHEDULE. SEE SHEET FE-7 FOR CONDUIT SCHEDULE.



ISSUED FOR BID	STAGE OF PLANS	APP.
ADD - FUEL	ADD FILE NO.	DATE
8/23/05	REVISIONS PER ADDENDUM AND FE	DESCRIPTION
8/23/05		

**Burns & McDonnell**  
SINCE 1918

**Washington Group International**  
Project Engineering, Construction, and Management Services

**Addison**  
ADDISON AIRPORT  
ADDISON, TEXAS

**BULK FUEL STORAGE AND DISPENSING SYSTEM**

**ELECTRICAL DETAILS - 2**

DESIGNER: B.E.H. PROJ. LEAD: J.H.B. APPROVED: M.S.  
 CAD TECH: D.M.B. CHECKED: D.R.V.

DATE: OCTOBER 25, 2004  
 SHEET 24 OF 33