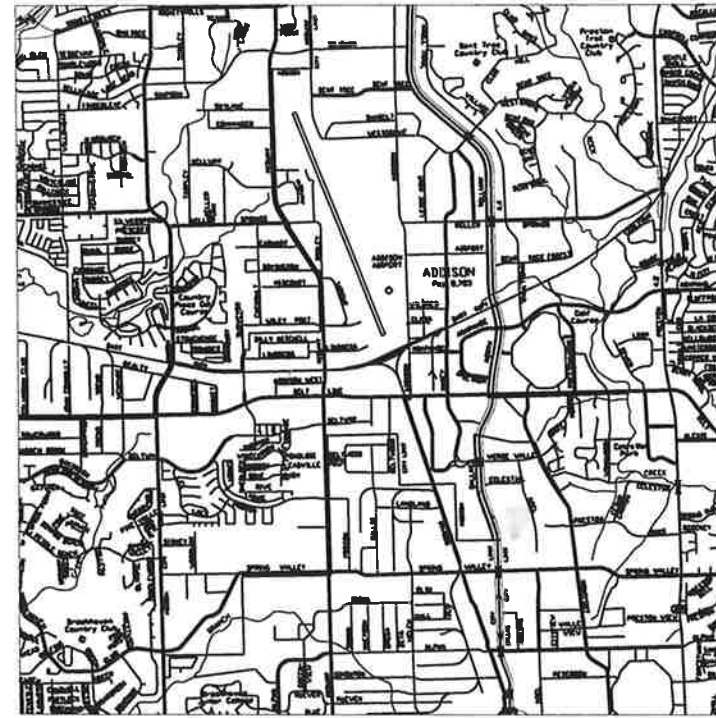


# FUEL FARM APRON RECONSTRUCTION

## ADDISON AIRPORT ADDISON, TEXAS



VICINITY MAP

NO SCALE

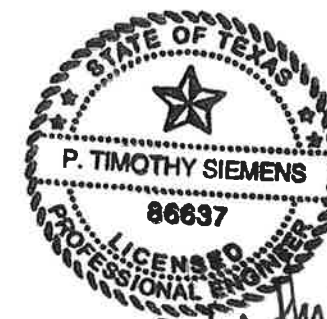
### GENERAL DESCRIPTION OF PROJECT:

Fuel Farm Apron Reconstruction  
Drainage Improvements

SHEET INDEX	
#	TITLE
1	Title Sheet
2	General Project Plan
3	Safety and Phasing Plan
4	Fuel Apron Plan
5	Joint Plan & Details
6	Contour Plan

TxDOT CSJ No. 0818ADDSN  
GARVER PROJECT NO. 07510280  
MARCH, 2008

# GARVER ENGINEERS



*P. Timothy Siemens*  
3-28-08

REV.	DATE	DESCRIPTION	BY	APPROVED

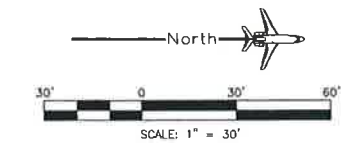
TOWN OF ADDISON  
ADDISON AIRPORT  
FUEL FARM APRON RECONSTRUCTION

TITLE SHEET  
Job No.: 07510280  
Date: January 2008  
Designed by: KAA  
Drawn by: BMN  
Sheet Number  
**1**

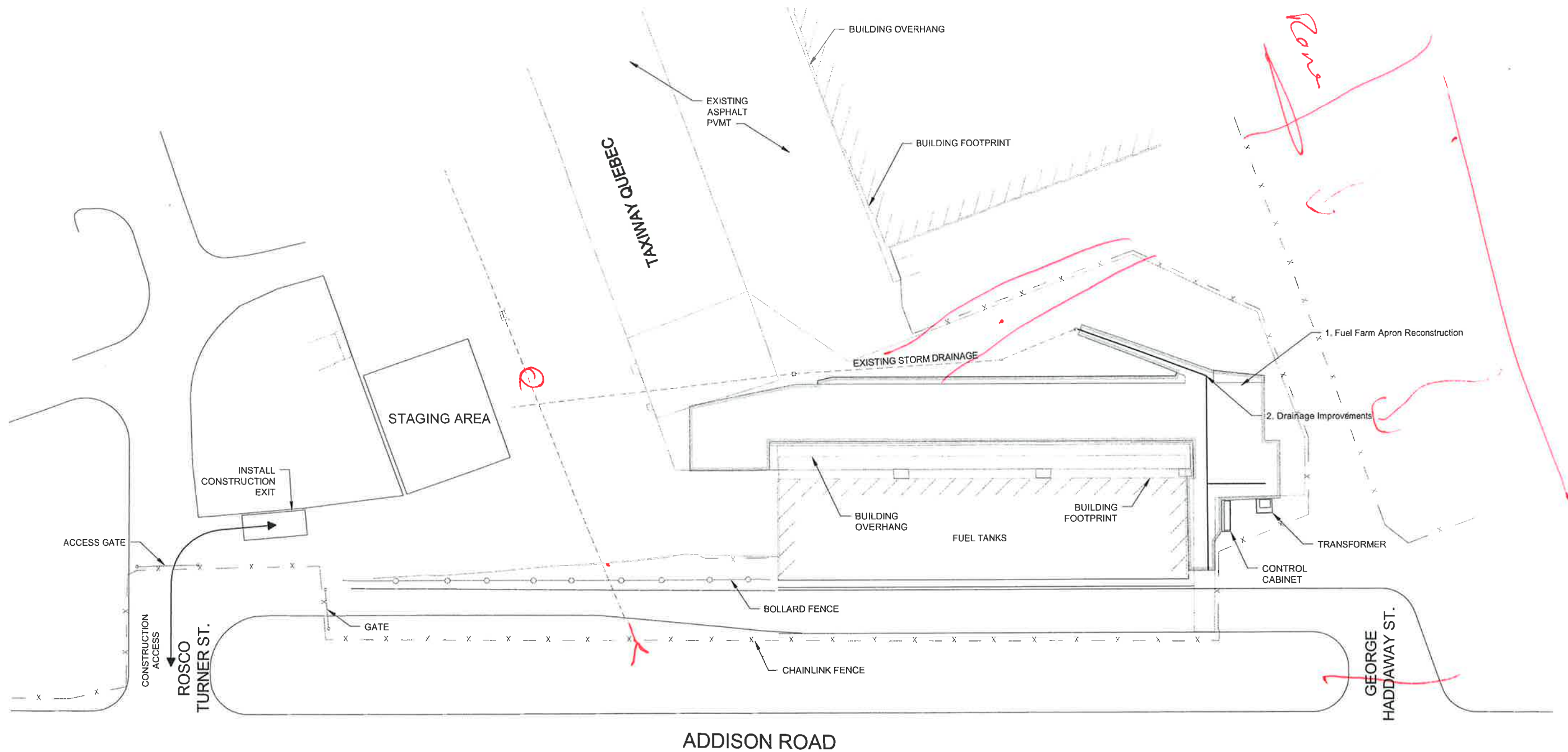
**GARVER ENGINEERS**  
9010 GAYLOR PARKWAY, SUITE 190, FRISCO, TX 75034, (972) 377-7460

**GENERAL NOTES**

- The existing features shown on these Plans are those noted in the field and those taken from record drawings. This does not guarantee that all features are shown on the Plans. There will be no additional payment to the Contractor due to variations in size, quantity or location of existing features.
- The Contractor shall furnish and maintain a building for the exclusive use of the Engineer as a field office. The Engineer's office shall be a minimum 8'x10'. The office shall be supplied with electricity, heating and air-conditioning, private phone, fax and separate copier. The office shall have running water and an indoor bathroom. The bathroom facilities shall be operational within the first five days following the Notice to Proceed and shall be maintained in working order at all times by the Contractor. The cost of furnishing and maintaining the office shall be considered subsidiary to the Mobilization bid item.
- The Contractor shall furnish and maintain a separate building for the exclusive use of the Engineer as a field testing laboratory. The lab shall be supplied with electricity, heating and air-conditioning, and running water. The Contractor may either furnish testing equipment or rent it from the Engineer's testing lab. The cost of furnishing and maintaining the lab shall be considered subsidiary to the P-501 bid item.
- Continuous (24-hour, 7-day a week) vehicle and pedestrian access to the fuel farm shall be maintained throughout the construction period. The Contractor is responsible for providing and maintaining all barricades, fences, traffic control devices, and other safety and traffic control materials, appurtenances, and equipment for the duration of the construction contract.
- The Contractor shall provide access to the emergency shutoff switch at all times.
- The Contractor shall repair any damaged facilities to its original condition.
- The Contractor shall maintain, at all times, safely and emergency vehicle access to and from all areas within the construction area or areas being used by the Contractor through the length of the contract.
- Every effort has been made to locate and size all underground utilities from available City documents, on-site surveys and record drawings. When lines or other obstructions are located during construction, it is the Contractor's responsibility to protect the lines and immediately notify the Owner, Utility Company and Engineer.



- LEGEND**
- BASE BID
- GENERAL PROJECT PLAN**
- Fuel Farm Apron Reconstruction
  - Drainage Improvements



REV.	DATE	DESCRIPTION	BY	APPROVED

**GARVER ENGINEERS**  
3010 GAYLOR PARKWAY, SUITE 190, FRISCO, TX 75034, (972) 877-7480

**TOWN OF ADDISON  
ADDISON AIRPORT  
FUEL FARM APRON RECONSTRUCTION**

**GENERAL PROJECT PLAN**

Job No.: 07510280  
Date: January 2008  
Designed by: KAA  
Drawn by: BMN

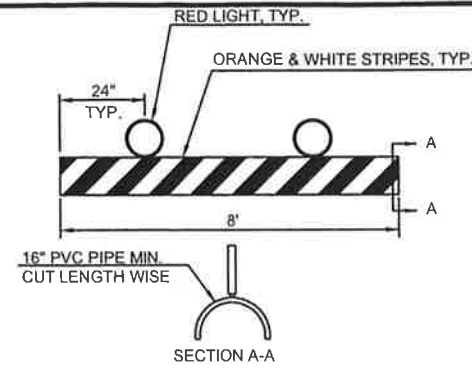
Sheet Number  
**2**

**SAFETY NOTES:**

1. Prior to commencement of the work, the Contractor shall review Federal Aviation Administration Advisory Circular 150/5370-2E (Operational Safety on Airports During Construction) which is included in the General Construction Contract Provisions.
2. Taxiway closures shall be coordinated through the Engineer and shall be in accordance with the details shown on the plans. The Contractor shall notify the Engineer a minimum of 48 hours prior to closing any pavement areas so that NOTAM's can be issued, as needed.
3. All temporary closed markings and procedures that may be required during construction shall be in accordance with the Federal Aviation Administration Advisor Circulars 150/5340-1H. Payment for said markings and procedures shall be made under the lump sum bid item "Temporary Marking, Lighting, and Barricades."
4. Low profile flasher barricades shall be used to delineate closed areas of pavement. See details, this sheet.
5. All construction vehicles shall be flagged or lighted for high visibility.
6. The Contractor shall be responsible for the safe storage of materials and equipment when not in use.

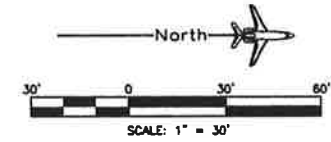
**SAFETY NOTES CONT'D:**

7. Waste materials resulting from this Project shall be disposed of off-site.
8. The Contractor shall keep the project area free from loose or blowable debris at all times. The Contractor shall sweep all closed pavements prior to reopening them.
9. The Contractor shall continuously monitor the Airport's Common Traffic Advisory Frequency (CTAF)/Aeronautical Advisory Station (Unicom) frequency when work is being performed on the Airport. The Ground frequency is 122.95 MHz.
10. The Contractor shall provide the name and telephone number of a person to act as the Contractor's representative, available 24 hours per day, should problems pertaining to the construction work arise which would require the Contractor's immediate attention.
11. Phasing and construction sequence shall be as detailed on this sheet.
12. The existing utilities shown are approximate locations. The contractor shall contact 1-800-DIG-TESS at least 24 hours prior to excavation for utility locations.



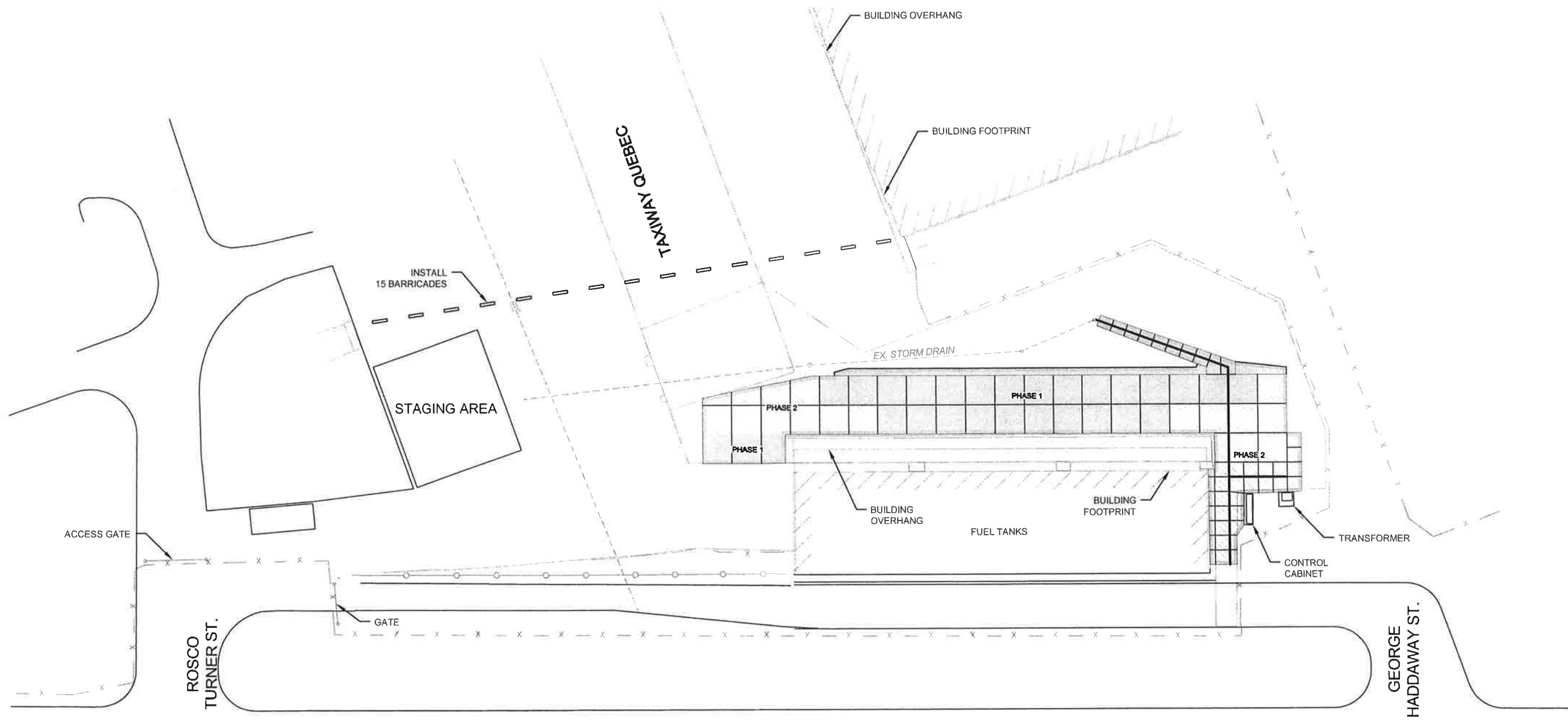
**BARRICADE NOTES:**

1. Barricades shall be lightweight and collapsible upon contact with an aircraft.
2. Barricades shall have a low-profile and not exceed 18" in height.
3. Barricades shall have alternating diagonal orange and white stripes.
4. Barricades shall have red lights (flashing or steady burning).
5. Barricades shall be weighted or secured to the pavement.
6. Barricades shall be spaced not more than 20' apart.



**LEGEND**

- BASE BID
- PHASE 1
- PHASE 2



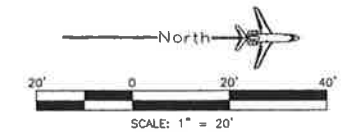
REV.	DATE	DESCRIPTION	BY	APPROVED

**TOWN OF ADDISON  
ADDISON AIRPORT  
FUEL FARM APRON RECONSTRUCTION**

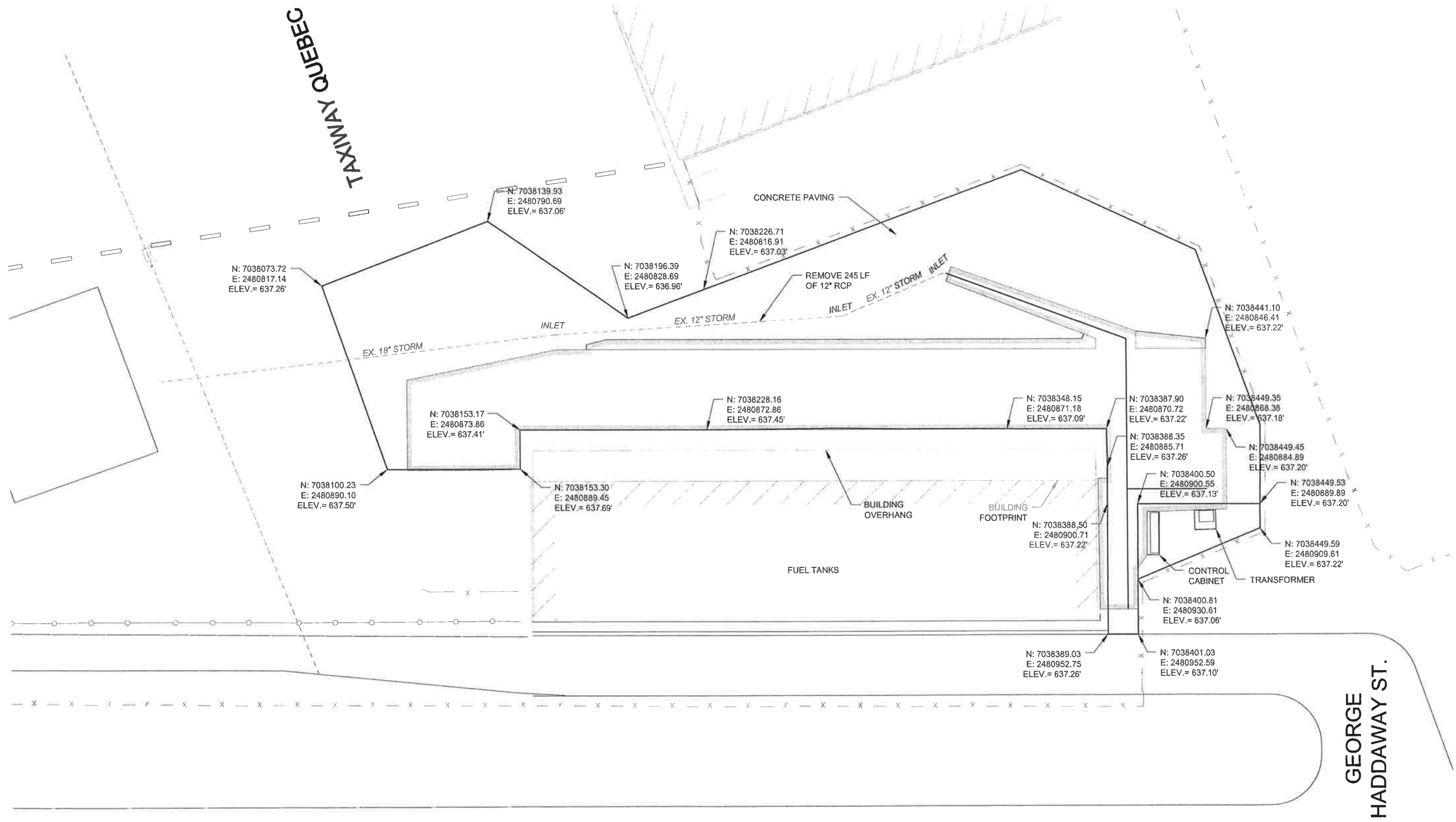
**SAFETY & PHASING PLAN**

Job No.: 07510280  
Date: January 2008  
Designed by: KAA  
Drawn by: BMN

**GARVER ENGINEERS**  
9010 GAYLOR PARKWAY, SUITE 190, FRISCO, TX 75034, (972) 377-7460



**LEGEND**  
 ——— BASE BID



**ADDISON ROAD**

**GEORGE  
HADDAWAY ST.**

**TAXIWAY QUEBEC**

REV.	DATE	DESCRIPTION	BY	APPROVED

**GARVER ENGINEERS**  
 3010 GAYLOR PARKWAY, SUITE 190, FRISCO, TX 75034, (972) 377-7460

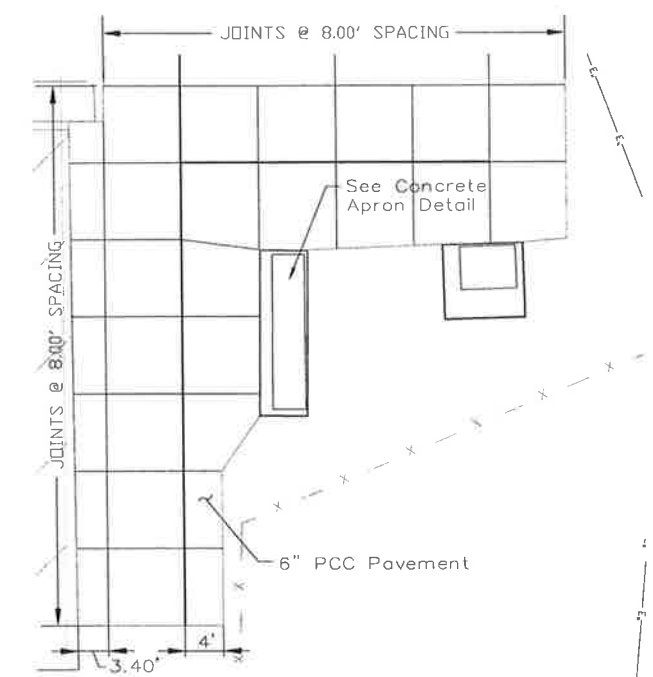
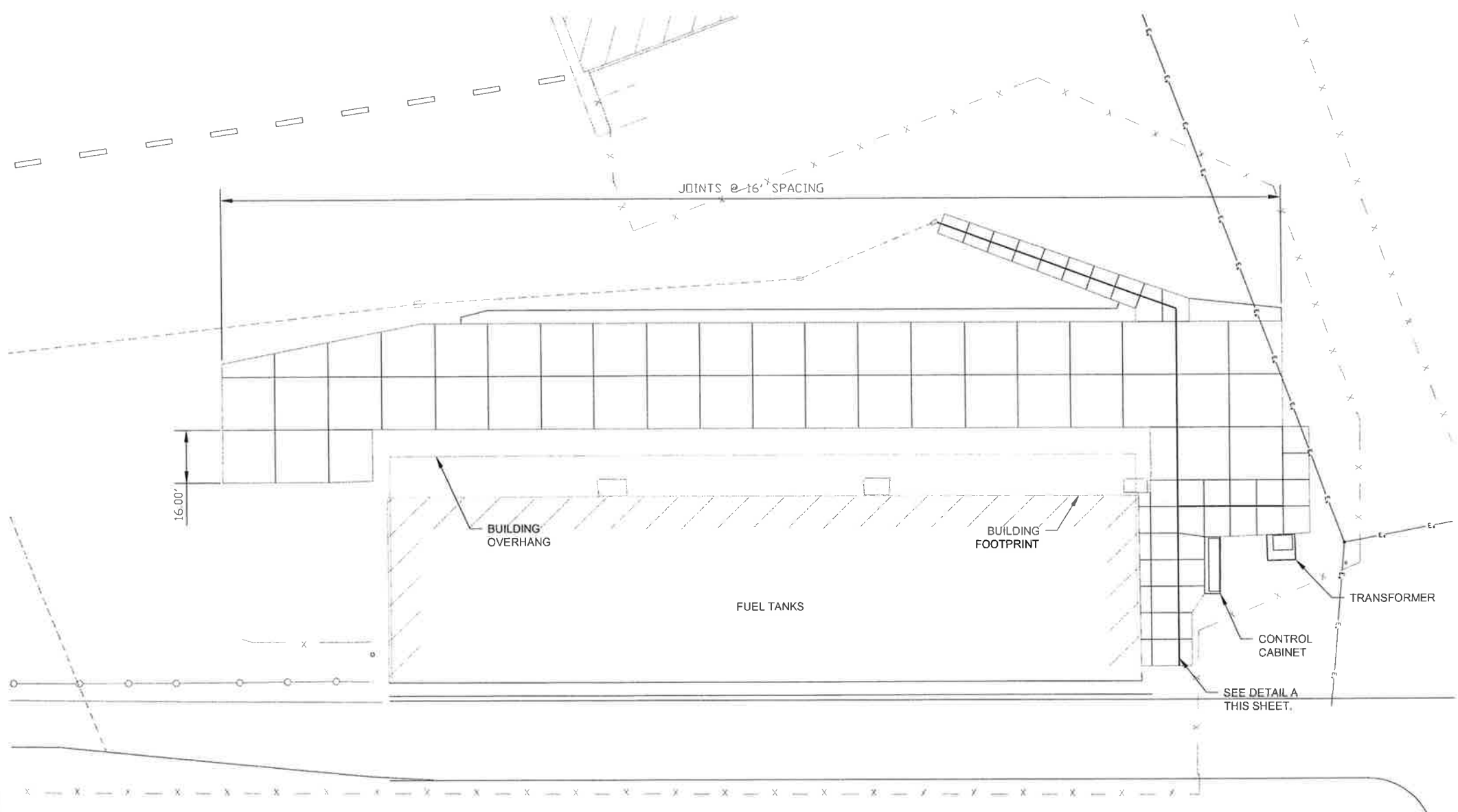
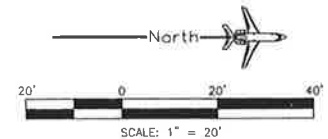
**TOWN OF ADDISON  
ADDISON AIRPORT  
FUEL FARM APRON RECONSTRUCTION**

**FUEL APRON PLAN**

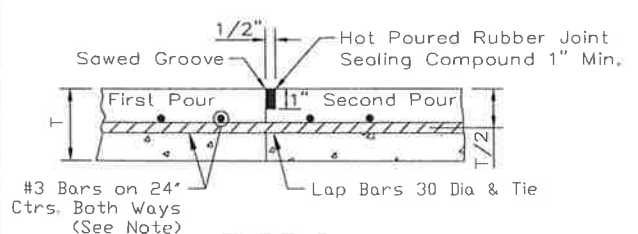
Job No.: 07510280  
 Date: January 2008  
 Designed by: KAA  
 Drawn by: BMN

Sheet Number

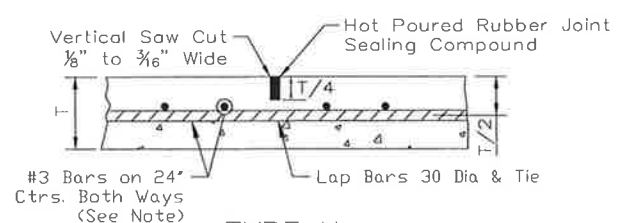
**4**



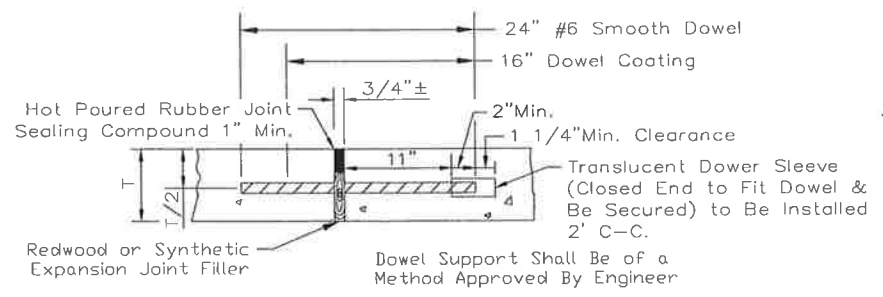
DETAIL A  
SCALE: 1" = 10'



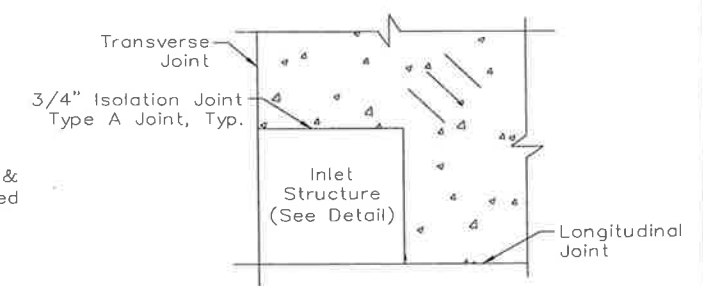
TYPE D  
CONSTRUCTION JOINT



TYPE H  
CONSTRUCTION JOINT



TYPE A  
EXPANSION JOINT  
(Spaced 600FT. Maximum; Locate at Structures and at Intersection P.C.'s & P.T.'s)



ISOLATION JOINT  
FOR MANHOLE STRUCTURES

Note:  
Alternate Reinforcement  
#4 Bars on 30" Ctrs.  
Both Ways.

REV.	DATE	DESCRIPTION	BY	APPROVED

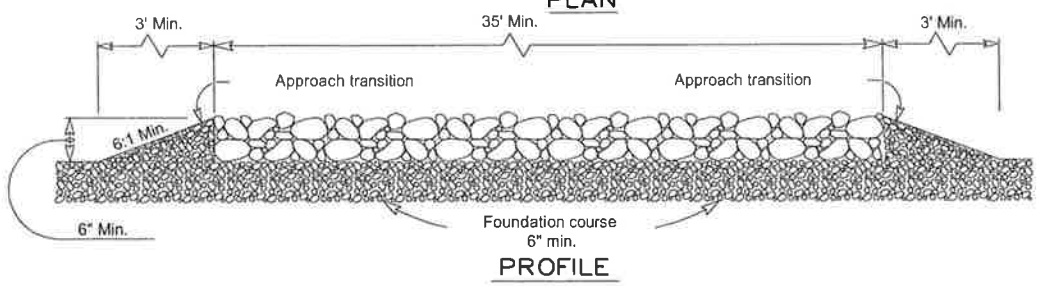
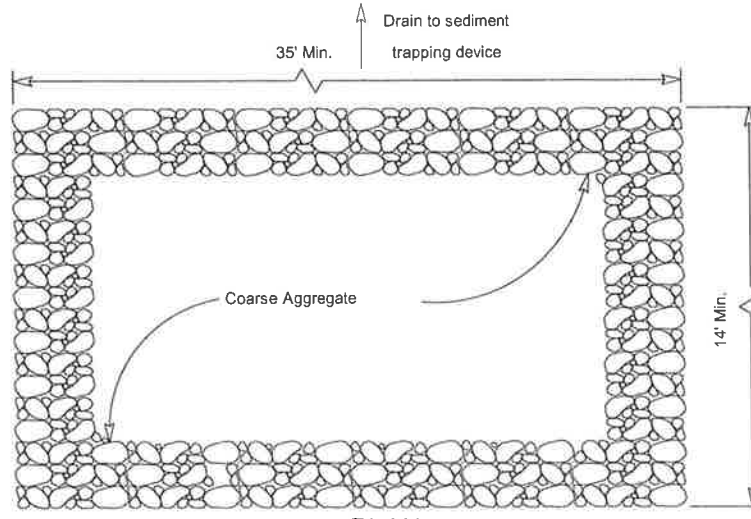
**GARVERENGINEERS**  
3010 GAYLOR PARKWAY, SUITE 190, FRISCO, TX 75034, (972) 377-7480

TOWN OF ADDISON  
ADDISON AIRPORT  
FUEL FARM APRON RECONSTRUCTION

JOINT PLAN  
AND DETAILS

Job No.: 07510280  
Date: January 2008  
Designed by: KAA  
Drawn by: BMN

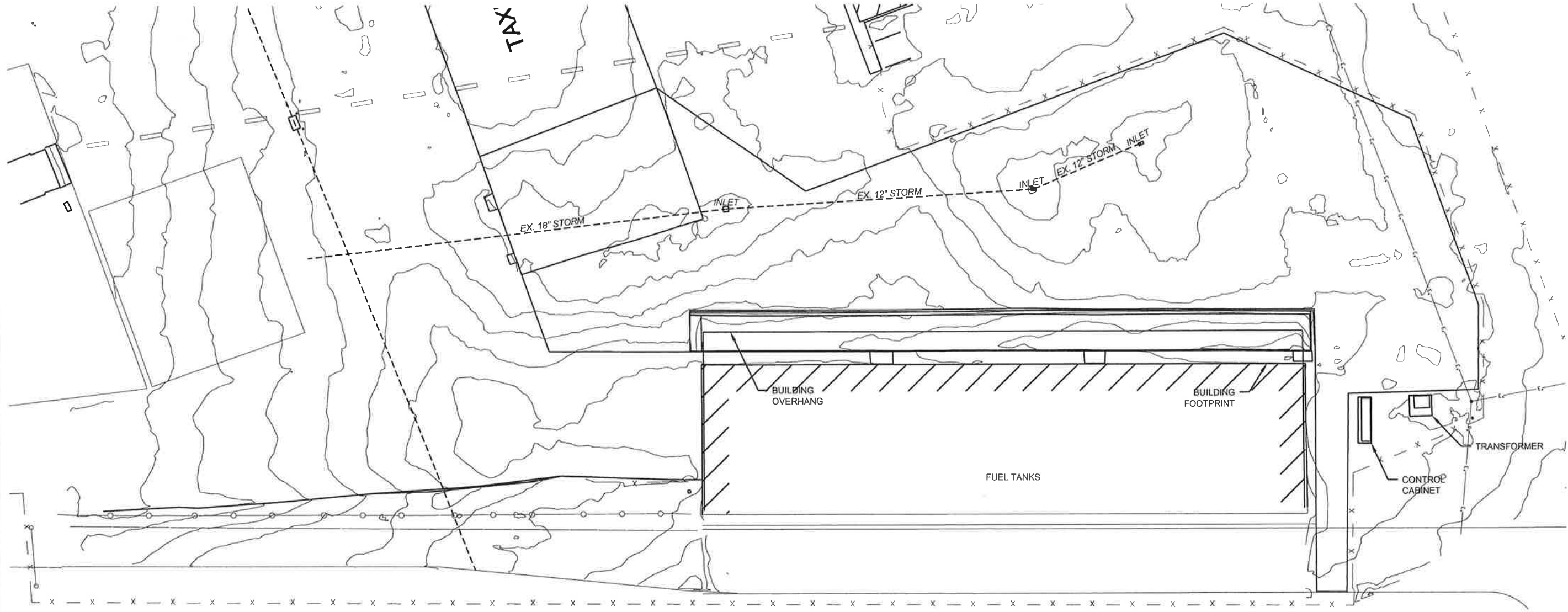
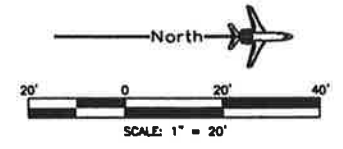




**CONSTRUCTION EXIT**

**GENERAL NOTES**

1. The length of the construction exit shall be as indicated on the plans, but not less than 35'.
2. The coarse aggregate should be open graded with a size of 3" to 5".
3. The approach transitions should be no steeper than 6:1 and constructed as directed by the Engineer.
4. The construction exit foundation course shall be flexible base, bituminous concrete, portland cement concrete or other material as approved by the Engineer.
5. The construction exit shall be graded to allow drainage to a sediment trapping device.
6. The guidelines shown hereon are suggestions only and may be modified by the Engineer.
7. See General Project Notes for construction exit location.



REV.	DATE	DESCRIPTION	BY	APPROVED

**GARVER ENGINEERS**  
 3010 GAYLOR PARKWAY, SUITE 190, FRISCO, TX 75034, (972) 377-7480

TOWN OF ADDISON  
 ADDISON AIRPORT  
 FUEL FARM APRON RECONSTRUCTION

CONTOUR PLAN  
 Job No.: 07510280  
 Date: January 2008  
 Designed by: KAA  
 Drawn by: BMN

Sheet Number  
**6**