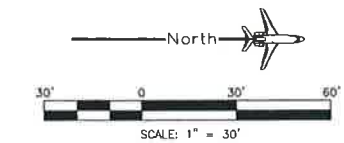
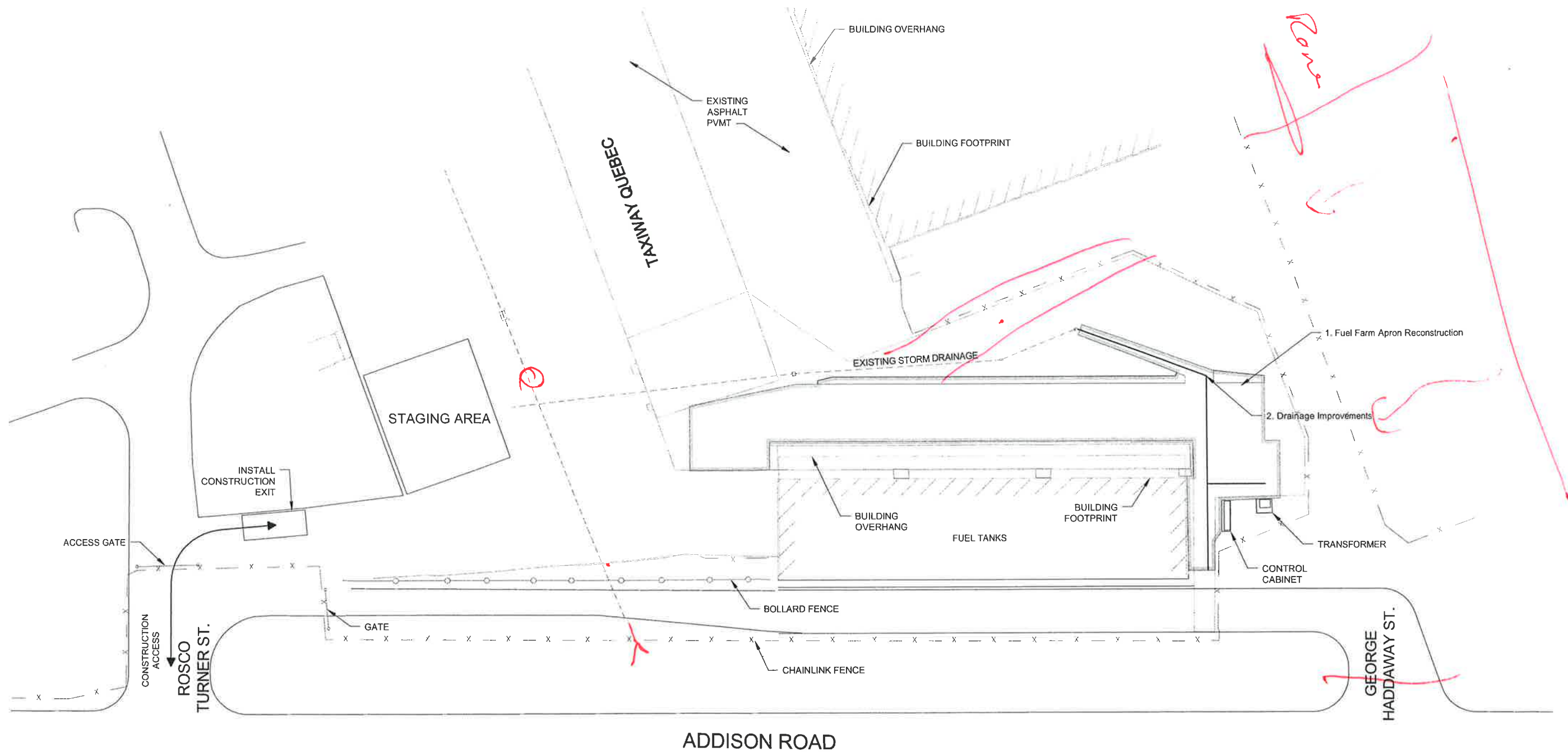


GENERAL NOTES

1. The existing features shown on these Plans are those noted in the field and those taken from record drawings. This does not guarantee that all features are shown on the Plans. There will be no additional payment to the Contractor due to variations in size, quantity or location of existing features.
2. The Contractor shall furnish and maintain a building for the exclusive use of the Engineer as a field office. The Engineer's office shall be a minimum 8'x10'. The office shall be supplied with electricity, heating and air-conditioning, private phone, fax and separate copier. The office shall have running water and an indoor bathroom. The bathroom facilities shall be operational within the first five days following the Notice to Proceed and shall be maintained in working order at all times by the Contractor. The cost of furnishing and maintaining the office shall be considered subsidiary to the Mobilization bid item.
3. The Contractor shall furnish and maintain a separate building for the exclusive use of the Engineer as a field testing laboratory. The lab shall be supplied with electricity, heating and air-conditioning, and running water. The Contractor may either furnish testing equipment or rent it from the Engineer's testing lab. The cost of furnishing and maintaining the lab shall be considered subsidiary to the P-501 bid item.
4. Continuous (24-hour, 7-day a week) vehicle and pedestrian access to the fuel farm shall be maintained throughout the construction period. The Contractor is responsible for providing and maintaining all barricades, fences, traffic control devices, and other safety and traffic control materials, appurtenances, and equipment for the duration of the construction contract.
5. The Contractor shall provide access to the emergency shutoff switch at all times.
6. The Contractor shall repair any damaged facilities to its original condition.
7. The Contractor shall maintain, at all times, safely and emergency vehicle access to and from all areas within the construction area or areas being used by the Contractor through the length of the contract.
8. Every effort has been made to locate and size all underground utilities from available City documents, on-site surveys and record drawings. When lines or other obstructions are located during construction, it is the Contractor's responsibility to protect the lines and immediately notify the Owner, Utility Company and Engineer.



- LEGEND**
- BASE BID
- GENERAL PROJECT PLAN**
1. Fuel Farm Apron Reconstruction
 2. Drainage Improvements



REV.	DATE	DESCRIPTION	BY	APPROVED

GARVER ENGINEERS
3010 GAYLOR PARKWAY, SUITE 190, FRISCO, TX 75034, (972) 877-7480

**TOWN OF ADDISON
ADDISON AIRPORT
FUEL FARM APRON RECONSTRUCTION**

GENERAL PROJECT PLAN

Job No.: 07510280
Date: January 2008
Designed by: KAA
Drawn by: BMN

Sheet Number
2