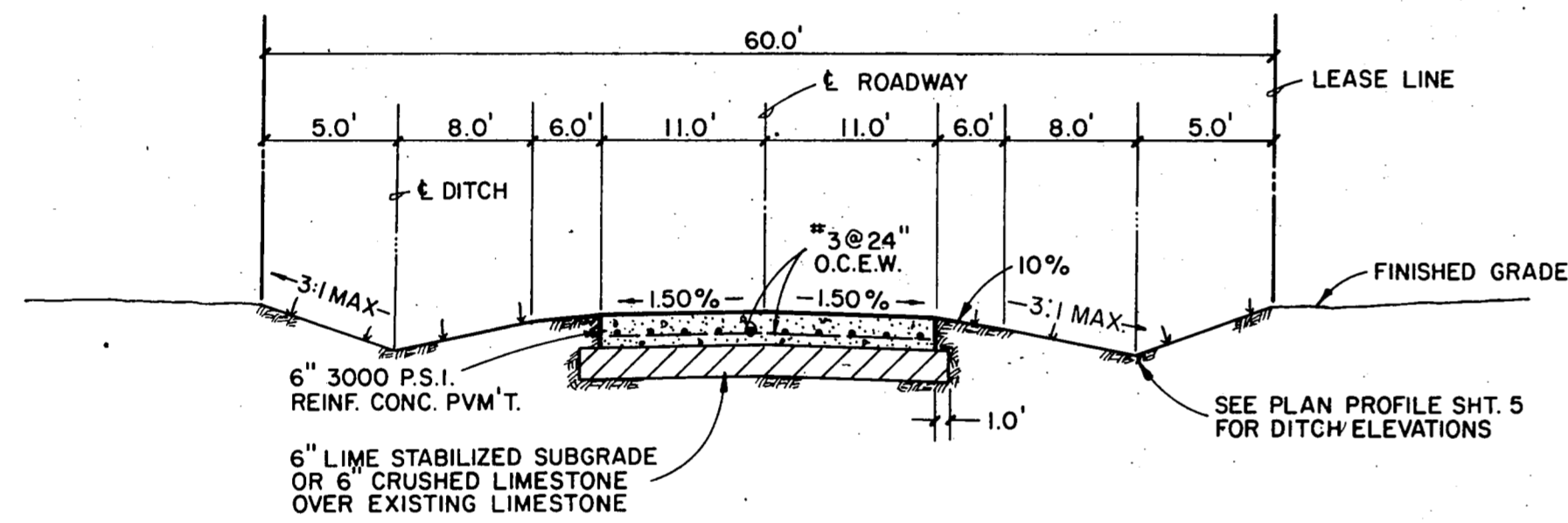
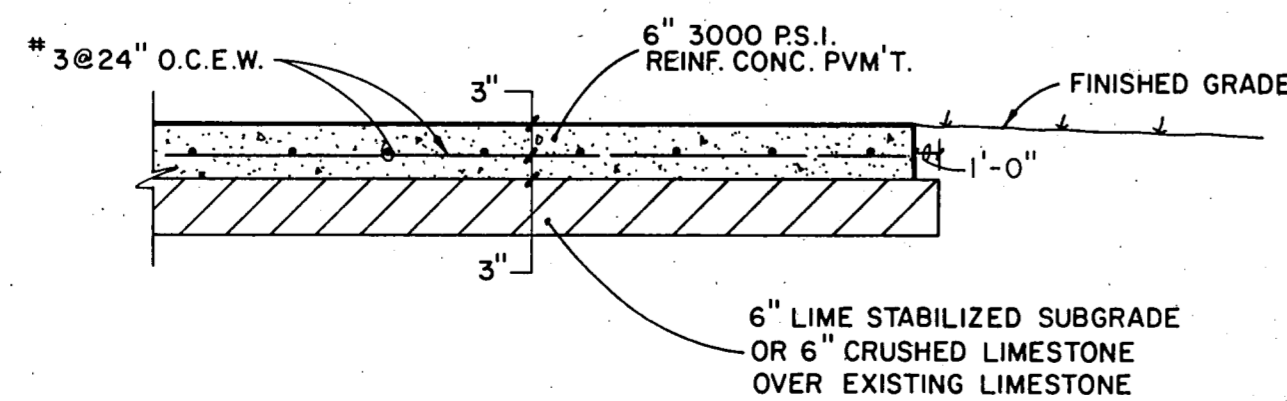


TAXIWAY SECTION
NO SCALE



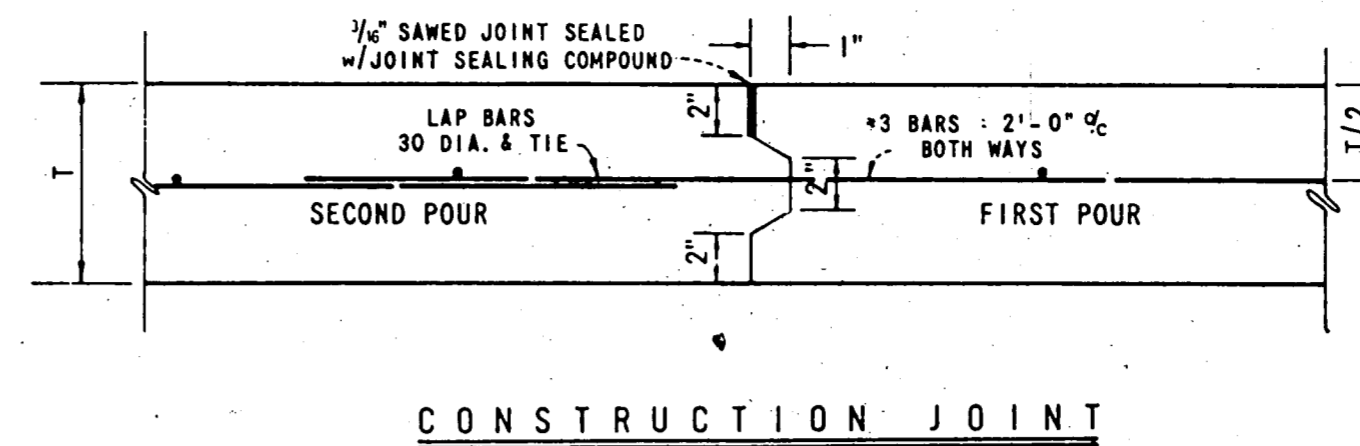
ROADWAY
NO SCALE



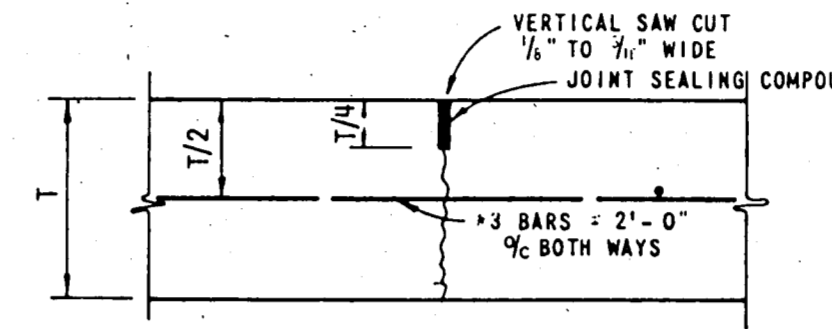
RAMP
NO SCALE

ROADWAY GENERAL NOTES:

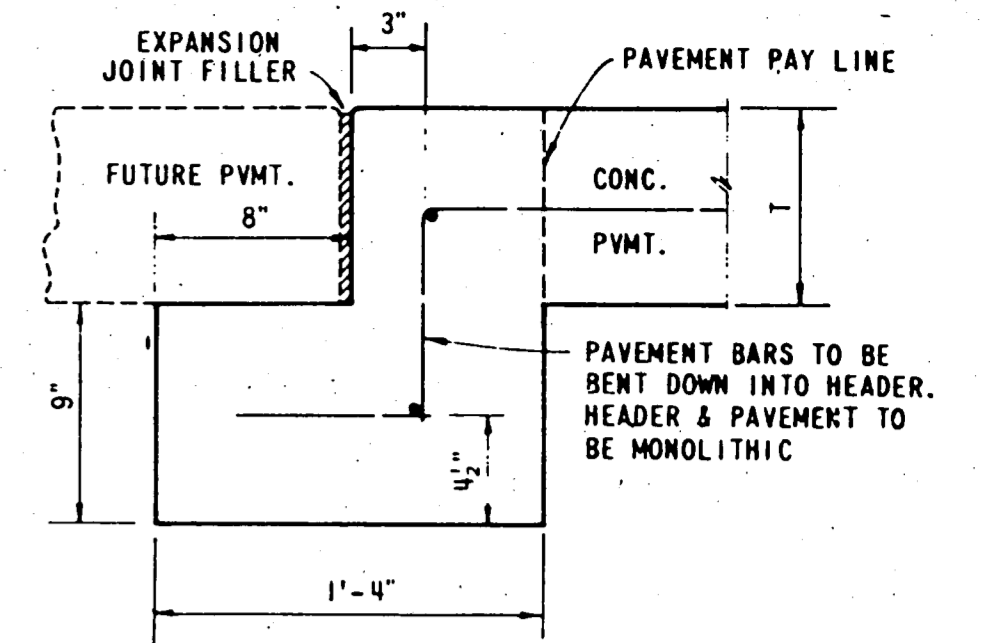
1. Lime Stabilized Subgrade: to be used when subgrade is of clay material. Lime shall be applied at the rate of 6% by dry weight in order to achieve a plasticity index of 15 or less. Compaction is to be to a minimum of 95% of Standard Proctor density (ASTM D698), at or slightly above optimum moisture content.
2. Crushed Limestone Base: to be used when subgrade is of limestone material. Limestone is to be crushed by suitable methods to obtain a maximum size of 2 inches. Base material is to be compacted to 90% Modified Proctor Density at a moisture content of 2 to 6 percent above optimum.
3. Topsoil material removed during excavation is to be placed in ditches after excavation to the proper grades.
4. Road and taxiway shall receive a broom finish. Ramp shall receive a brush finish.



CONSTRUCTION JOINT



SAWED DUMMY JOINT
20' MAXIMUM SPACING



CITY OF ADDISON
APPROVED

STREET HEADER

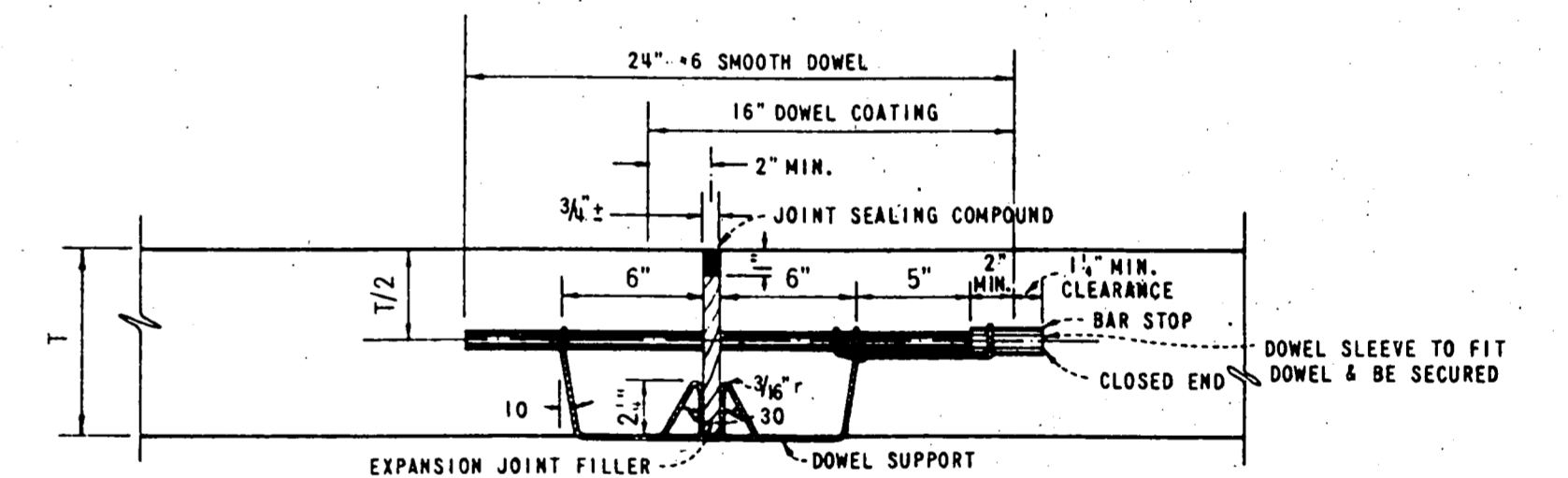
FOR CONSTRUCTION

BUILDING DEPARTMENT

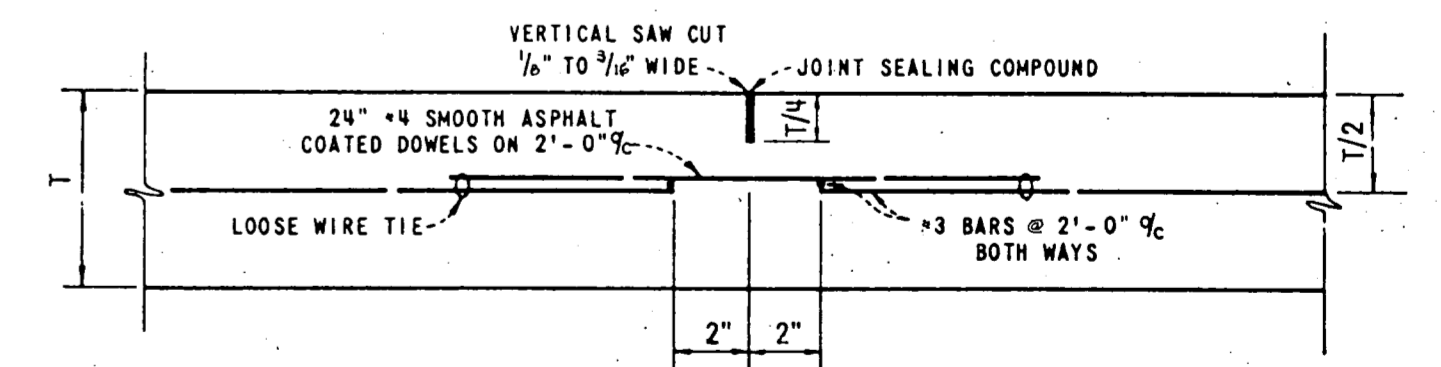
DATE: _____
NOTE: CONTRACTOR IS HEREBY INSTRUCTED TO EXERCISE CARE IN MEETING OR EXCEEDING ALL REQUIREMENTS OF BOTH NATIONAL AND LOCAL CODES AND FOR ORDINANCES APPLICABLE TO HIS WORK. APPROVAL OF THESE DRAWINGS SHALL NOT BE CONSTRUED TO RELIEVE RESPONSIBILITY OR IMPLY VARIANCE TO SUCH CODES.

CONCRETE CONSTRUCTION GENERAL NOTES

Steel chairs approved by the Engineer shall be used to support reinforcing steel and shall be placed at the intersection of longitudinal and transverse bars at 4'-0" spacing.
Pavement layout will necessitate that all construction and warping joints coincide with lane lines. Thru lane construction will be continuous with all left turn lanes and transitions to be poured as fill-ins subject to approval by the Engineer.
Contractor shall provide transverse construction joint similar in detail to longitudinal construction joint or expansion joint at the end of each days pour or when directed by the Engineer.



TRANSVERSE EXPANSION JOINT



TRANSVERSE CONTRACTION JOINT
(60 FT. MAX. SPACING)

ROADWAY SECTIONS	
PAVING DETAILS	
NORTH 40 - PHASE II	
ADDISON MUNICIPAL AIRPORT	
Riewe & Wischmeyer, Inc.	
CONSULTING ENGINEERS	
DALLAS, TEXAS	
DESIGNED T.K.	DRAWN R.W.C.
DATE SEPT. 1982	SHEET NO 7 OF 8
JOB NO. 81-3600	SCALE NO SCALE

