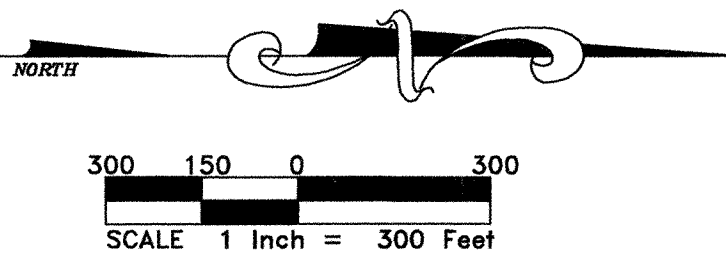
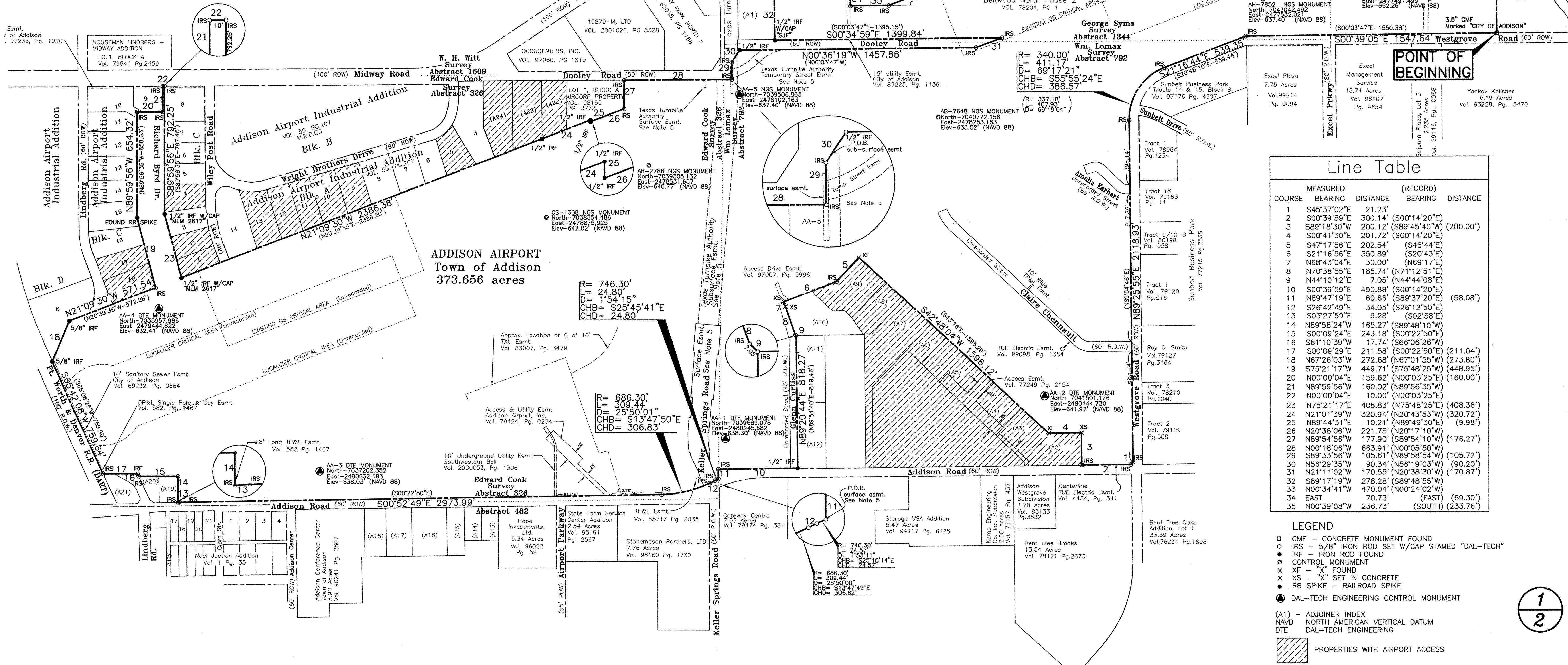


GENERAL NOTES:

- Bearings are referenced to the Texas State Plane coordinate system (NAD83).
- All objects shown hereon as open circles are 5/8-inch iron rods set with a plastic cap that is stamped "DAL-TECH" unless otherwise noted.
- All record calls are shown in parenthesis.
- Hatched areas currently have access to the airport property.
- All references to surface and sub-surface easements to the Texas Turnpike Authority are found in Interlocal agreement by and between The Town of Addison and Texas Turnpike Authority (Dallas North Tollway and Addison Airport Toll Tunnel) dated March 10, 1997, as recorded in the DCDR Volume 97084, Page 02628.
- Texas Power & Light Easement recorded in Volume 5021, Page 357 of the DCDR, may affect subject tract, but was not locatable by description in the field.



LOCATION MAP



Line Table

COURSE	MEASURED BEARING	MEASURED DISTANCE	(RECORD) BEARING	(RECORD) DISTANCE
1	S45°37'02"E	21.23'		
2	S00°39'59"E	300.14'	(S00°14'20"E)	(200.00')
3	S89°18'30"W	200.12'	(S89°45'40"W)	(200.00')
4	S00°41'30"E	201.72'	(S00°14'20"E)	
5	S47°17'56"E	202.54'	(S46°44'E)	
6	S21°16'56"E	350.89'	(S20°43'E)	
7	N68°43'04"E	30.00'	(N69°17'E)	
8	N70°38'55"E	185.74'	(N71°12'51"E)	
9	N44°10'12"E	7.05'	(N44°44'08"E)	
10	S00°39'59"E	490.88'	(S00°14'20"E)	
11	N89°47'19"E	60.66'	(S89°37'20"E)	(58.08')
12	S26°42'49"E	34.05'	(S26°12'50"E)	
13	S03°27'59"E	9.28'	(S02°58'E)	
14	N89°58'24"W	165.27'	(S89°48'10"W)	
15	S00°09'24"E	243.18'	(S00°22'50"E)	
16	S61°10'39"W	17.74'	(S66°06'26"W)	
17	S00°09'29"E	211.58'	(S00°22'50"E)	(211.04')
18	N67°26'03"W	272.68'	(N67°01'55"W)	(273.80')
19	S75°21'17"W	449.71'	(S75°48'25"W)	(448.95')
20	N00°00'04"E	159.62'	(N00°03'25"E)	(160.00')
21	N89°59'56"W	160.02'	(N89°56'35"W)	
22	N00°00'04"E	10.00'	(N00°03'25"E)	
23	N75°21'17"E	408.83'	(N75°48'25"E)	(408.36')
24	N21°01'39"W	320.94'	(N20°43'53"W)	(320.72')
25	N89°44'31"W	10.21'	(N89°49'30"W)	(9.98')
26	N20°38'06"W	221.75'	(N20°17'10"W)	
27	N89°54'56"W	177.90'	(S89°54'10"W)	(176.27')
28	N00°18'06"E	663.91'	(N00°05'50"W)	
29	S89°33'56"W	105.61'	(N89°58'54"W)	(105.72')
30	N56°29'35"W	90.34'	(N56°19'03"W)	(90.20')
31	N21°11'02"W	170.55'	(N20°38'30"W)	(170.87')
32	S89°17'19"W	278.28'	(S89°48'55"W)	
33	N00°34'41"W	470.04'	(N00°24'02"W)	
34	EAST	70.73'	(EAST)	(69.30')
35	N00°39'08"W	236.73'	(SOUTH)	(233.76')

- LEGEND**
- CMF - CONCRETE MONUMENT FOUND
 - IRS - 5/8" IRON ROD SET W/CAP STAMPED "DAL-TECH"
 - IRS - IRON ROD FOUND
 - CONTROL MONUMENT
 - × XF - "X" FOUND
 - × XS - "X" SET IN CONCRETE
 - RR SPIKE - RAILROAD SPIKE
 - DAL-TECH ENGINEERING CONTROL MONUMENT
- (A1) - ADJOINER INDEX
 NAVD - NORTH AMERICAN VERTICAL DATUM
 DTE - DAL-TECH ENGINEERING
- ▨ PROPERTIES WITH AIRPORT ACCESS

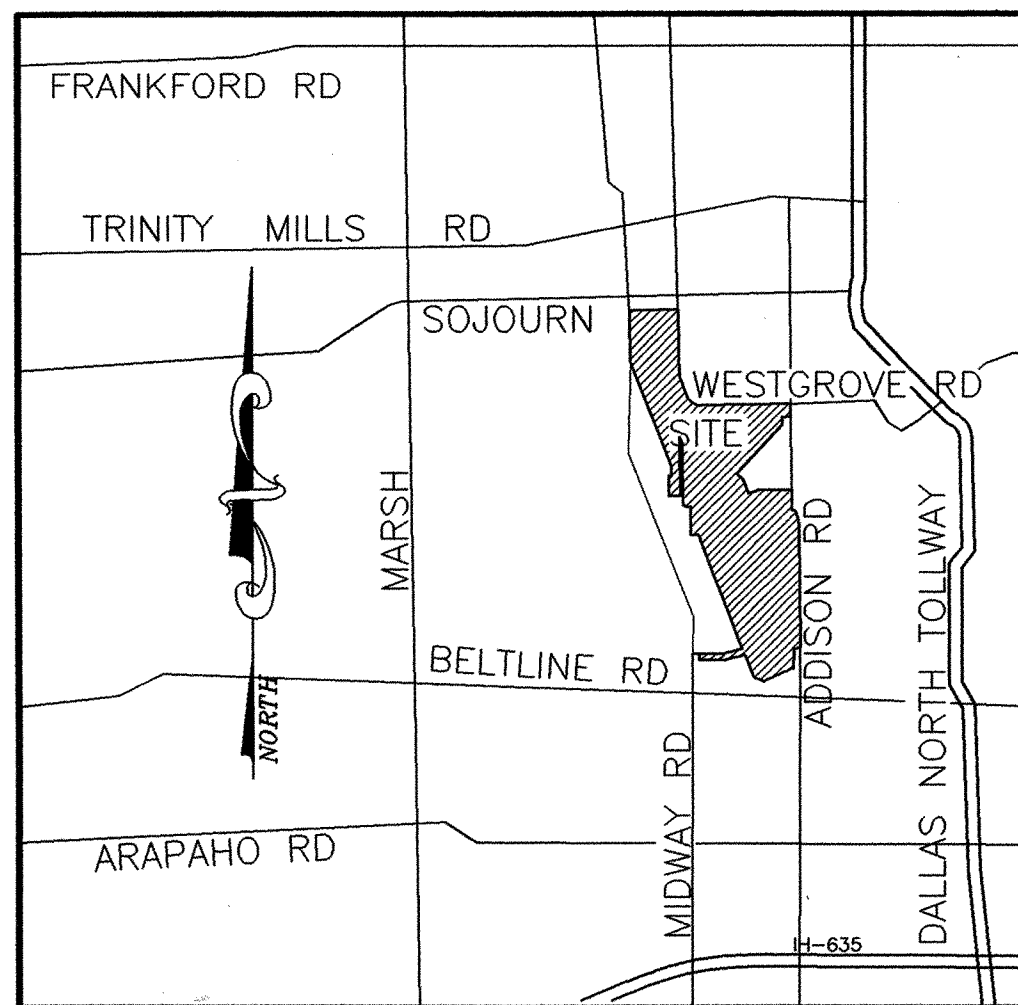
1
2

DAL-TECH
ENGINEERING, INC.
 CONSULTING CIVIL ENGINEERS / SURVEYORS
 CONSTRUCTION MANAGERS
 17311 DALLAS PARKWAY
 SUITE 200
 DALLAS, TEXAS 75248
 (972) 250-2727 (972) 250-4774

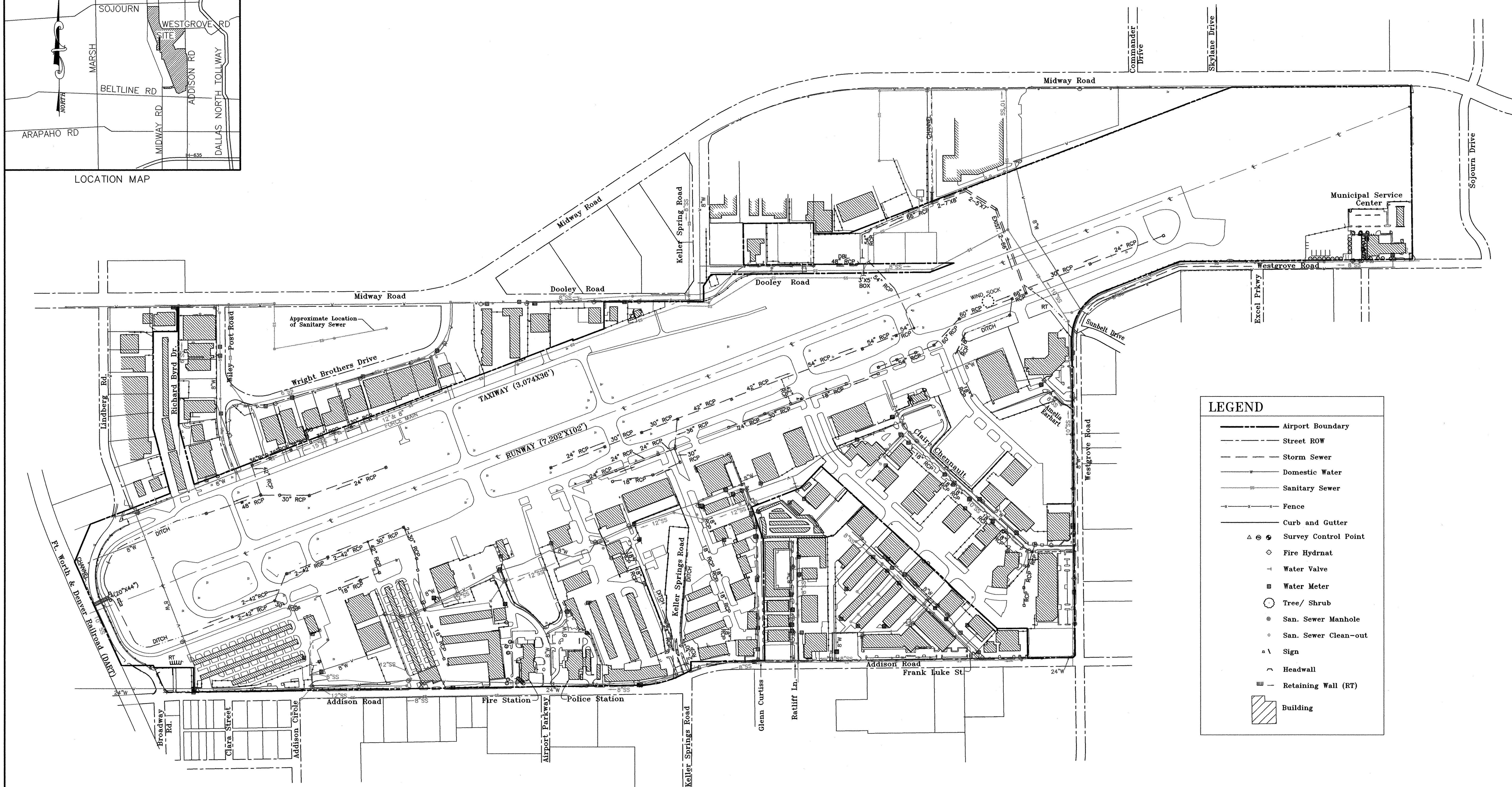
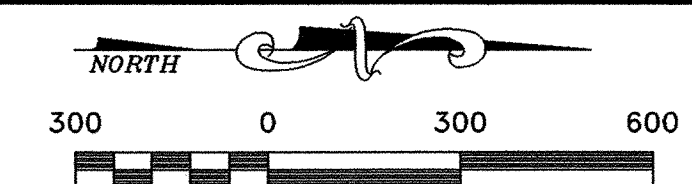
BOUNDARY SURVEY
ADDISON AIRPORT
TOWN OF ADDISON, TEXAS

DRAWN	JOB NO.	CONTRACT NO.	SCALE	DATE
DTE	0107	-	1"=300'	JAN 2002

PLOT DATE: 01-07-02
 P: V07ADDISONAIRPORTSURVEY\LCBOUNDARY



LOCATION MAP



LEGEND

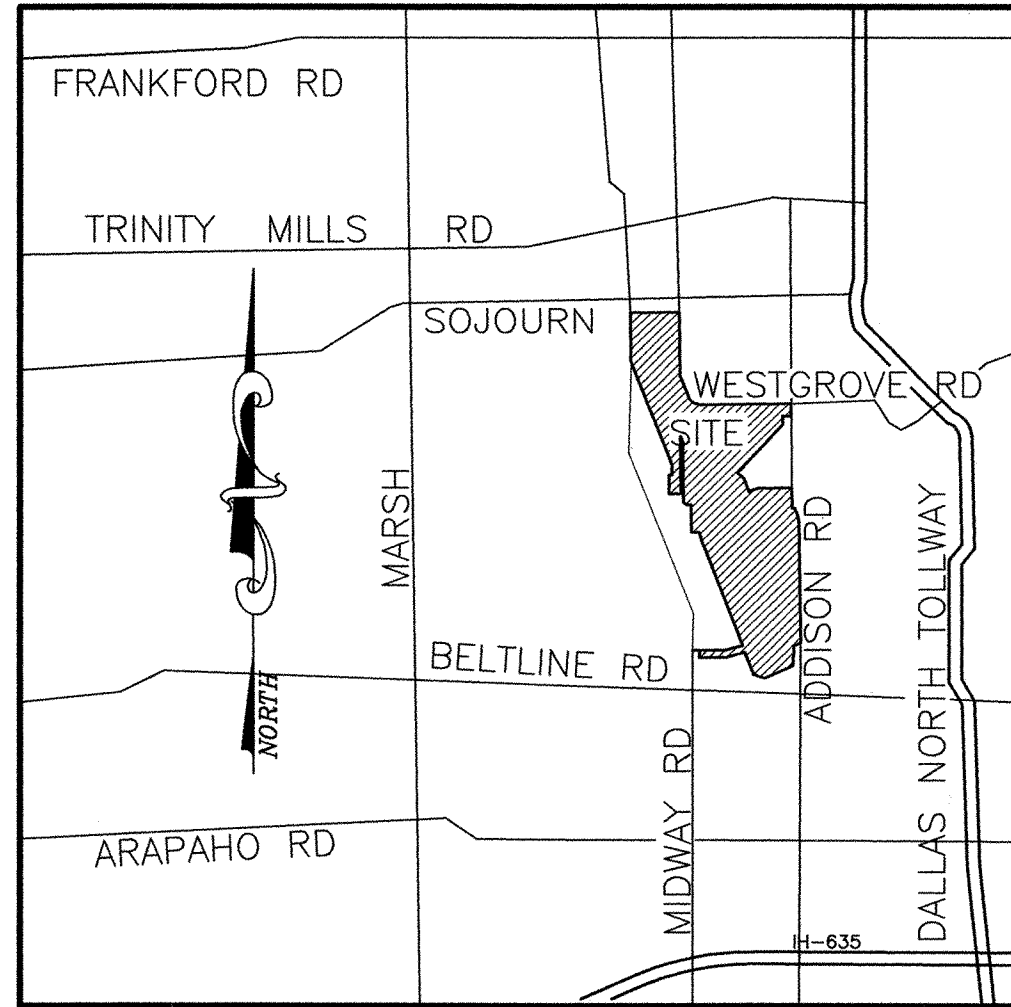
- Airport Boundary
- - - Street ROW
- - - Storm Sewer
- - - Domestic Water
- - - Sanitary Sewer
- - - Fence
- - - Curb and Gutter
- △ Survey Control Point
- ◇ Fire Hydrant
- ⊥ Water Valve
- Water Meter
- Tree/ Shrub
- San. Sewer Manhole
- San. Sewer Clean-out
- ⊃ Sign
- ⌒ Headwall
- ▬ Retaining Wall (RT)
- ▨ Building

P:\07\ADDISONAIRPORT_SURVEY\12-22-01A

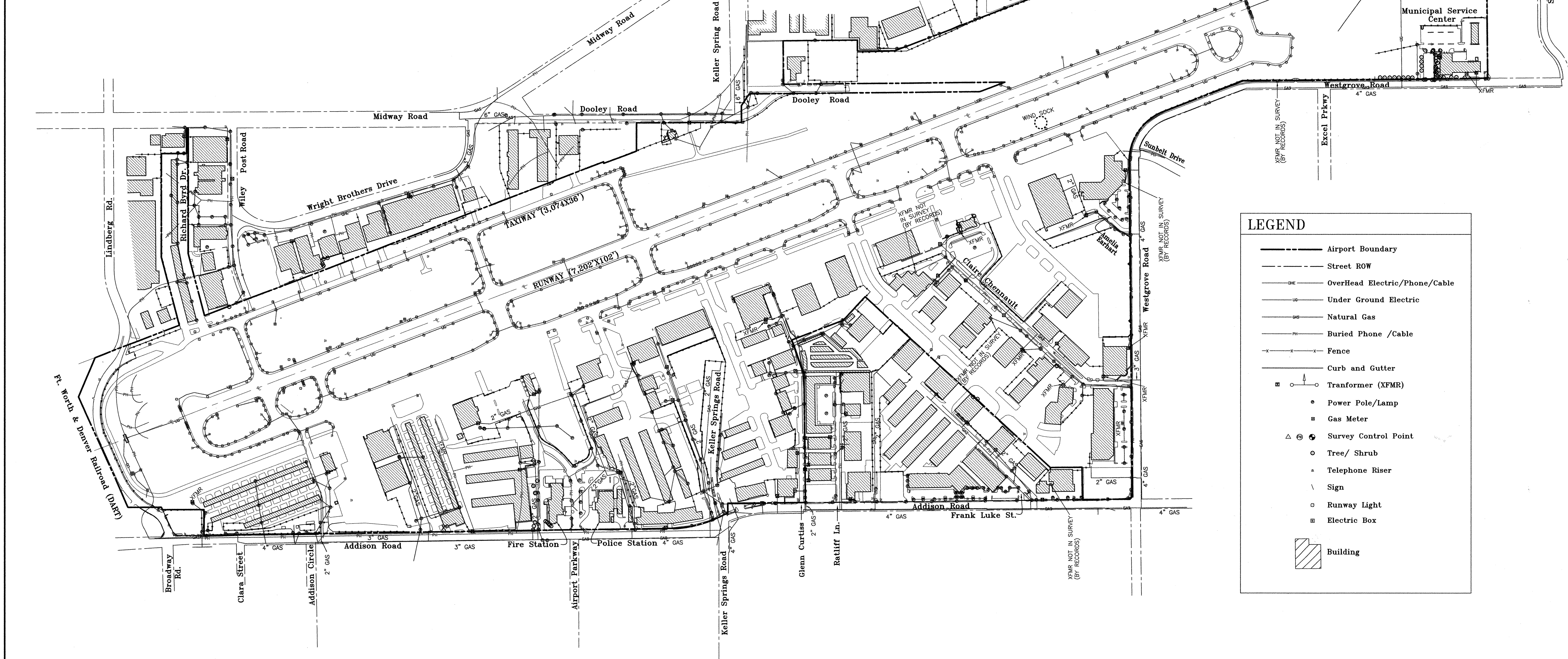
DAL-TECH
ENGINEERING, INC.
 CONSULTING CIVIL ENGINEERS / SURVEYORS
 CONSTRUCTION MANAGERS
 17311 DALLAS PARKWAY
 SUITE 200
 DALLAS, TEXAS 75248
 (972) 250-2727 (972) 250-4774

CITY UTILITIES PLAN				
ADDISON AIRPORT				
TOWN OF ADDISON, TEXAS				
DRAWN	JOB NO.	CONTRACT NO.	SCALE	DATE
DTE	0107	-	1" = 300'	01-02-02

02/06/02



LOCATION MAP



LEGEND

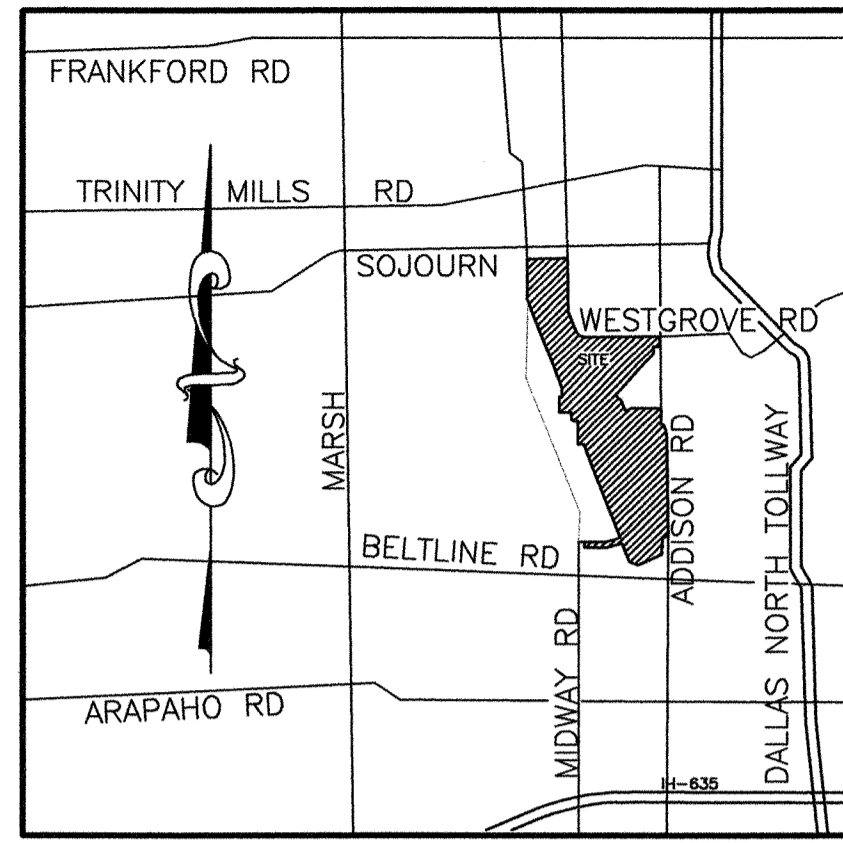
- Airport Boundary
- - - Street ROW
- OverHead Electric/Phone/Cable
- Under Ground Electric
- Natural Gas
- Buried Phone /Cable
- - - Fence
- Curb and Gutter
- Transformer (XFMR)
- Power Pole/Lamp
- Gas Meter
- △ Survey Control Point
- Tree/ Shrub
- Telephone Riser
- \\ Sign
- Runway Light
- Electric Box
- ▨ Building

P:\0107\ADDISON\REPORT SURVEY\12-22-01A

DAL-TECH
ENGINEERING, INC.
 CONSULTING CIVIL ENGINEERS / SURVEYORS
 CONSTRUCTION MANAGERS
 17311 DALLAS PARKWAY
 SUITE 200
 DALLAS, TEXAS 75248
 (972) 250-2727 (972) 250-4774

FRANCHISE UTILITIES PLAN
ADDISON AIRPORT
TOWN OF ADDISON, TEXAS

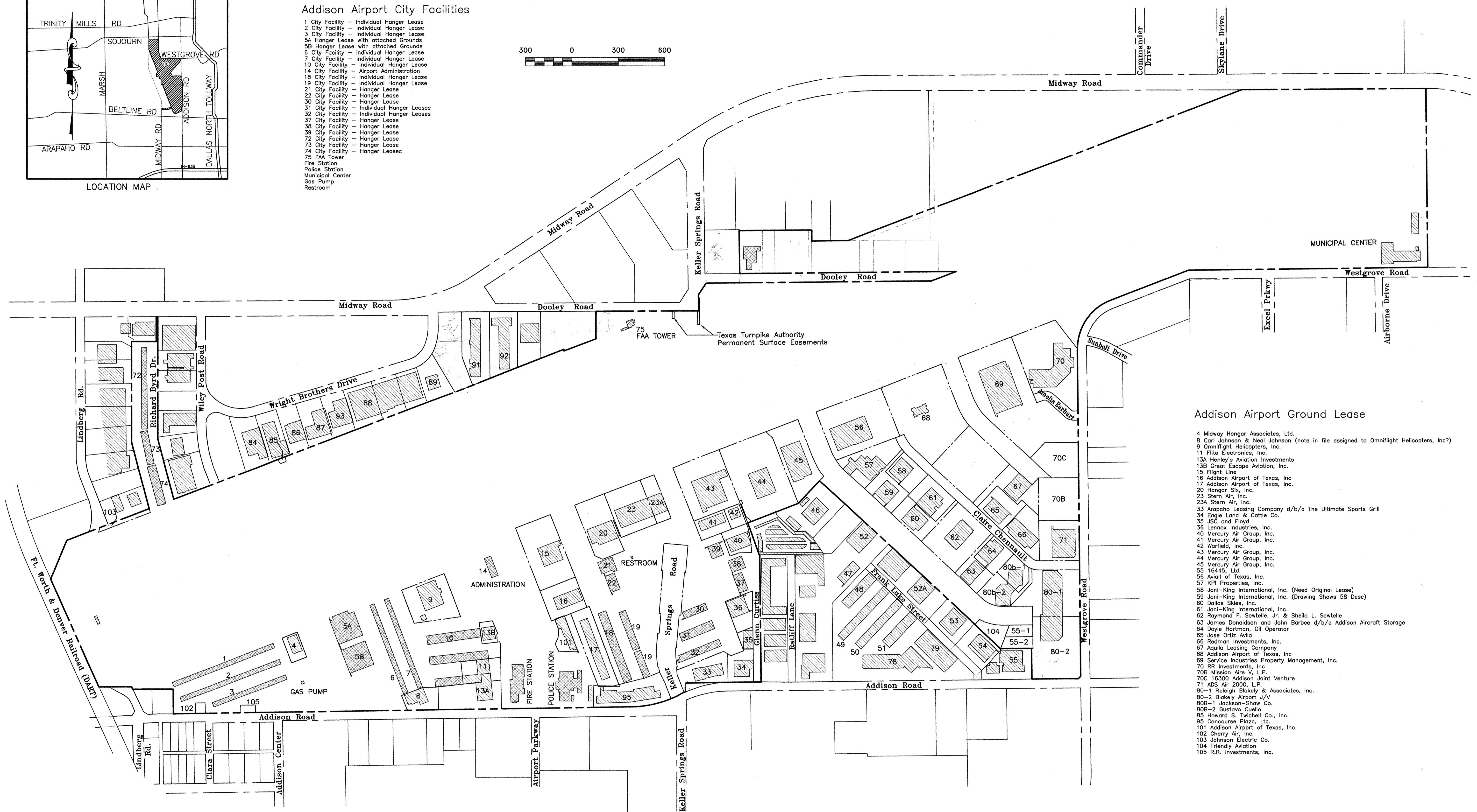
DRAWN	JOB NO.	CONTRACT NO.	SCALE	DATE
DTE	0107	-	1" = 300'	01-02-02



LOCATION MAP

Addison Airport City Facilities

- 1 City Facility - Individual Hanger Lease
- 2 City Facility - Individual Hanger Lease
- 3 City Facility - Individual Hanger Lease
- 5A Hanger Lease with attached Grounds
- 5B Hanger Lease with attached Grounds
- 6 City Facility - Individual Hanger Lease
- 7 City Facility - Individual Hanger Lease
- 10 City Facility - Individual Hanger Lease
- 14 City Facility - Airport Administration
- 18 City Facility - Individual Hanger Lease
- 19 City Facility - Individual Hanger Lease
- 21 City Facility - Hanger Lease
- 22 City Facility - Hanger Lease
- 30 City Facility - Hanger Lease
- 31 City Facility - Individual Hanger Leases
- 32 City Facility - Individual Hanger Leases
- 37 City Facility - Hanger Lease
- 38 City Facility - Hanger Lease
- 39 City Facility - Hanger Lease
- 72 City Facility - Hanger Lease
- 73 City Facility - Hanger Lease
- 74 City Facility - Hanger Lease
- 75 FAA Tower
- Fire Station
- Police Station
- Municipal Center
- Gas Pump
- Restroom



Addison Airport Ground Lease

- 4 Midway Hangar Associates, Ltd.
- 8 Carl Johnson & Neal Johnson (note in file assigned to Omniflight Helicopters, Inc?)
- 9 Omniflight Helicopters, Inc.
- 11 Flite Electronics, Inc.
- 13A Henley's Aviation Investments
- 13B Great Escape Aviation, Inc.
- 15 Flight Line
- 16 Addison Airport of Texas, Inc.
- 17 Addison Airport of Texas, Inc.
- 20 Hangar Six, Inc.
- 23 Stern Air, Inc.
- 23A Stern Air, Inc.
- 33 Arapaho Leasing Company d/b/a The Ultimate Sports Grill
- 34 Eagle Land & Cattle Co.
- 35 JSC and Floyd
- 36 Lennox Industries, Inc.
- 40 Mercury Air Group, Inc.
- 41 Mercury Air Group, Inc.
- 42 Warfield, Inc.
- 43 Mercury Air Group, Inc.
- 44 Mercury Air Group, Inc.
- 45 Mercury Air Group, Inc.
- 55 16445, Ltd.
- 56 Avall of Texas, Inc.
- 57 KPI Properties, Inc.
- 58 Jani-King International, Inc. (Need Original Lease)
- 59 Jani-King International, Inc. (Drawing Shows 58 Desc)
- 60 Dallas Skies, Inc.
- 61 Jani-King International, Inc.
- 62 Raymond F. Sawtelle, Jr. & Sheila L. Sawtelle
- 63 James Donaldson and John Barbee d/b/a Addison Aircraft Storage
- 64 Doyle Hartman, Oil Operator
- 65 Jose Ortiz Avila
- 66 Redman Investments, Inc.
- 67 Aquila Leasing Company
- 68 Addison Airport of Texas, Inc.
- 69 Service Industries Property Management, Inc.
- 70 RR Investments, Inc.
- 70B Mission Air V, L.P.
- 70C 16300 Addison Joint Venture
- 71 ADS Air 2000, L.P.
- 80-1 Raleigh Blokely & Associates, Inc.
- 80-2 Blokely Airport JV
- 80B-1 Jackson-Shaw Co.
- 80B-2 Gustavo Cuello
- 85 Howard S. Twichell Co., Inc.
- 95 Concourse Plaza, Ltd.
- 101 Addison Airport of Texas, Inc.
- 102 Cherry Air, Inc.
- 103 Johnson Electric Co.
- 104 Friendly Aviation
- 105 R.R. Investments, Inc.

PLOT DATE: 01/02/02
 P:\Projects\0107\Lease-Exhibits.dwg

DALTECH
ENGINEERING, INC.
 CONSULTING CIVIL ENGINEERS / SURVEYORS
 CONSTRUCTION MANAGERS
 17311 DALLAS PARKWAY
 SUITE 200
 DALLAS, TEXAS 75248
 (972) 250-2727 (972) 250-4774

LEASE INDEX EXHIBIT				
ADDISON AIRPORT				
TOWN OF ADDISON, TEXAS				
DRAWN	JOB NO.	CONTRACT NO.	SCALE	DATE
DTE	0107	-	1" = 300'	01-02-02