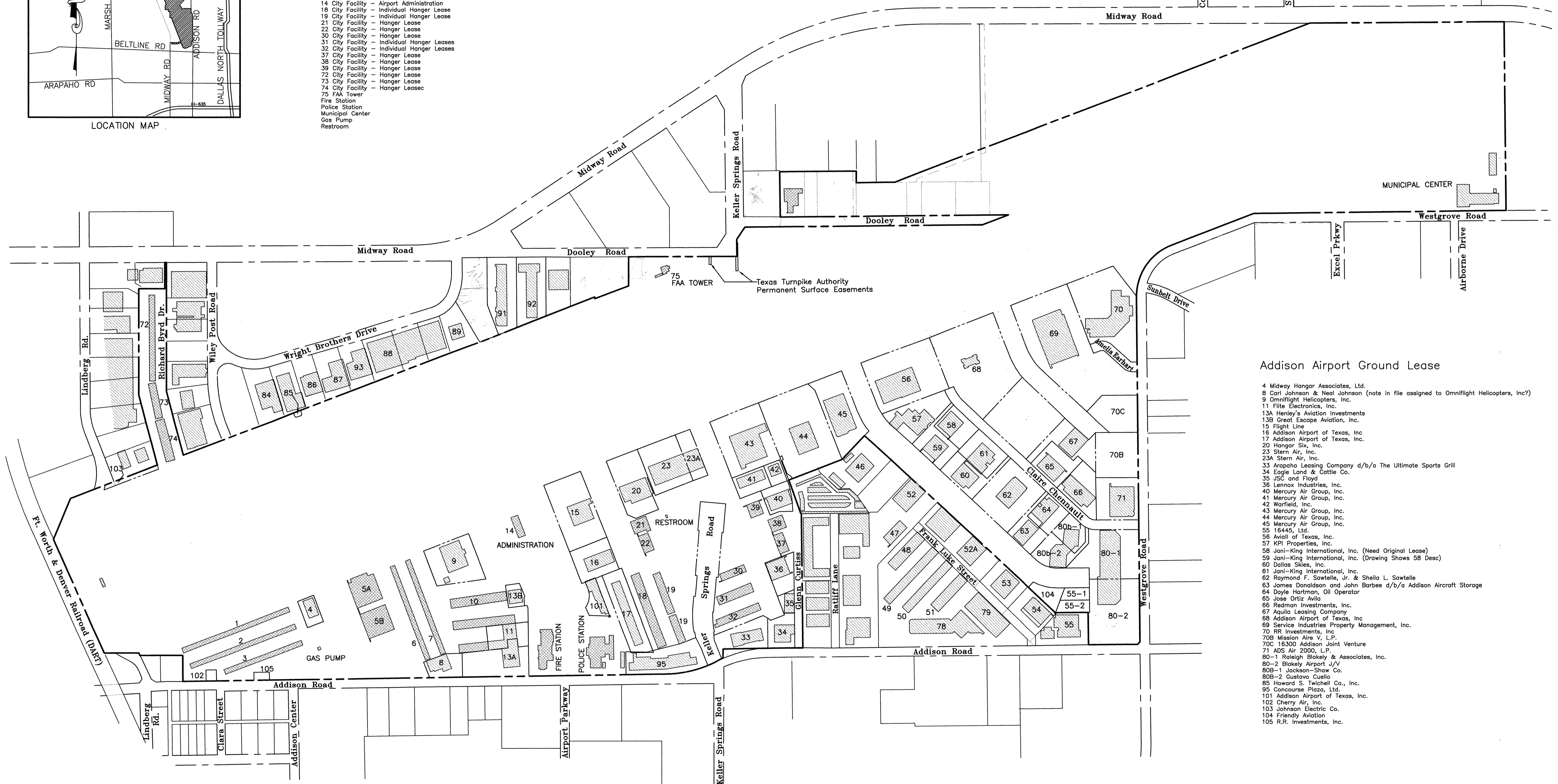


LOCATION MAP

Addison Airport City Facilities

- 1 City Facility - Individual Hanger Lease
- 2 City Facility - Individual Hanger Lease
- 3 City Facility - Individual Hanger Lease
- 5A Hanger Lease with attached Grounds
- 5B Hanger Lease with attached Grounds
- 6 City Facility - Individual Hanger Lease
- 7 City Facility - Individual Hanger Lease
- 10 City Facility - Individual Hanger Lease
- 14 City Facility - Airport Administration
- 18 City Facility - Individual Hanger Lease
- 19 City Facility - Individual Hanger Lease
- 21 City Facility - Hanger Lease
- 22 City Facility - Hanger Lease
- 30 City Facility - Hanger Lease
- 31 City Facility - Individual Hanger Leases
- 32 City Facility - Individual Hanger Leases
- 37 City Facility - Hanger Lease
- 38 City Facility - Hanger Lease
- 39 City Facility - Hanger Lease
- 72 City Facility - Hanger Lease
- 73 City Facility - Hanger Lease
- 74 City Facility - Hanger Lease
- 75 FAA Tower
- Fire Station
- Police Station
- Municipal Center
- Gas Pump
- Restroom



Addison Airport Ground Lease

- 4 Midway Hanger Associates, Ltd.
- 8 Carl Johnson & Neal Johnson (note in file assigned to Omniflight Helicopters, Inc?)
- 9 Omniflight Helicopters, Inc.
- 11 Flite Electronics, Inc.
- 13A Henley's Aviation Investments
- 13B Great Escape Aviation, Inc.
- 15 Flight Line
- 16 Addison Airport of Texas, Inc.
- 17 Addison Airport of Texas, Inc.
- 20 Hangar Six, Inc.
- 23 Stern Air, Inc.
- 23A Stern Air, Inc.
- 33 Arapaho Leasing Company d/b/a The Ultimate Sports Grill
- 34 Eagle Land & Cattle Co.
- 35 JSC and Floyd
- 36 Lennox Industries, Inc.
- 40 Mercury Air Group, Inc.
- 41 Mercury Air Group, Inc.
- 42 Warfield, Inc.
- 43 Mercury Air Group, Inc.
- 44 Mercury Air Group, Inc.
- 45 Mercury Air Group, Inc.
- 55 16445, Ltd.
- 56 Aviall of Texas, Inc.
- 57 KPI Properties, Inc.
- 58 Jani-King International, Inc. (Need Original Lease)
- 59 Jani-King International, Inc. (Drawing Shows 58 Desc)
- 60 Dallas Skies, Inc.
- 61 Jani-King International, Inc.
- 62 Raymond F. Sawtelle, Jr. & Sheila L. Sawtelle
- 63 James Donaldson and John Barbee d/b/a Addison Aircraft Storage
- 64 Doyle Hartman, Oil Operator
- 65 Jose Ortiz Avila
- 66 Redman Investments, Inc.
- 67 Aquila Leasing Company
- 68 Addison Airport of Texas, Inc.
- 69 Service Industries Property Management, Inc.
- 70 RR Investments, Inc.
- 70B Mission Air V, L.P.
- 70C 16300 Addison Joint Venture
- 71 ADS Air 2000, L.P.
- 80-1 Raleigh Blokely & Associates, Inc.
- 80-2 Blokely Airport J/V
- 80B-1 Jackson-Shaw Co.
- 80B-2 Gustavo Cuello
- 85 Howard S. Twichell Co., Inc.
- 95 Concourse Plaza, Ltd.
- 101 Addison Airport of Texas, Inc.
- 102 Cherry Air, Inc.
- 103 Johnson Electric Co.
- 104 Friendly Aviation
- 105 R.R. Investments, Inc.

PLOT DATE: 01/02/02
 P:\Projects\0107\Lease-Exhibits.dwg

DALTECH
ENGINEERING, INC.
 CONSULTING CIVIL ENGINEERS / SURVEYORS
 CONSTRUCTION MANAGERS
 17311 DALLAS PARKWAY
 SUITE 200
 DALLAS, TEXAS 75248
 (972) 250-2727 (972) 250-4774

LEASE INDEX EXHIBIT				
ADDISON AIRPORT				
TOWN OF ADDISON, TEXAS				
DRAWN	JOB NO.	CONTRACT NO.	SCALE	DATE
DTE	0107	-	1" = 300'	01-02-02