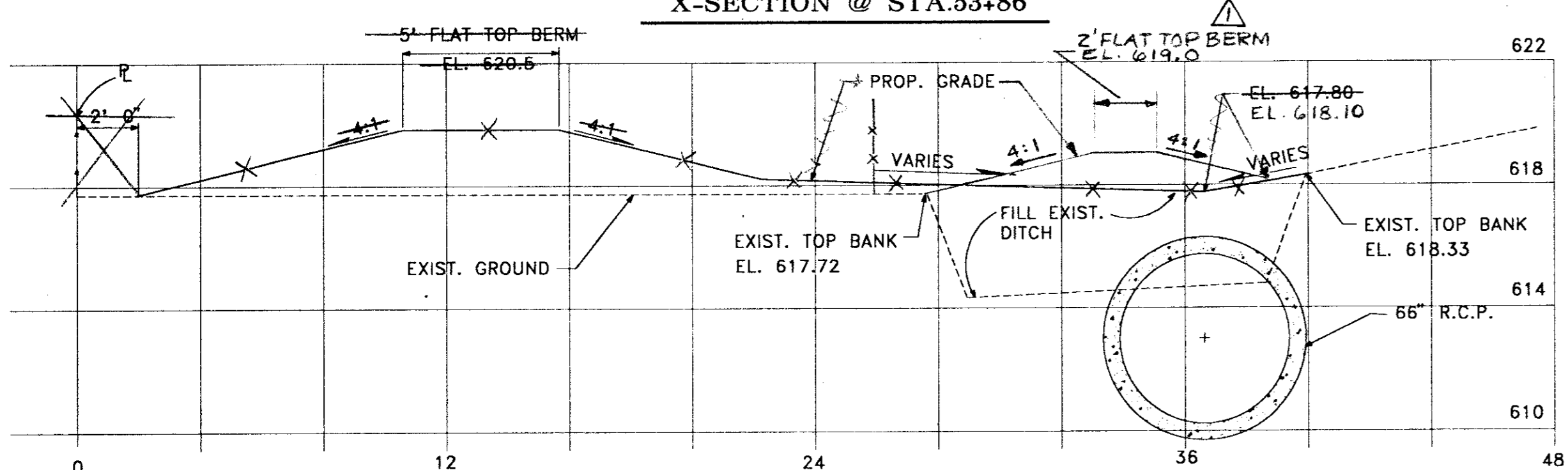
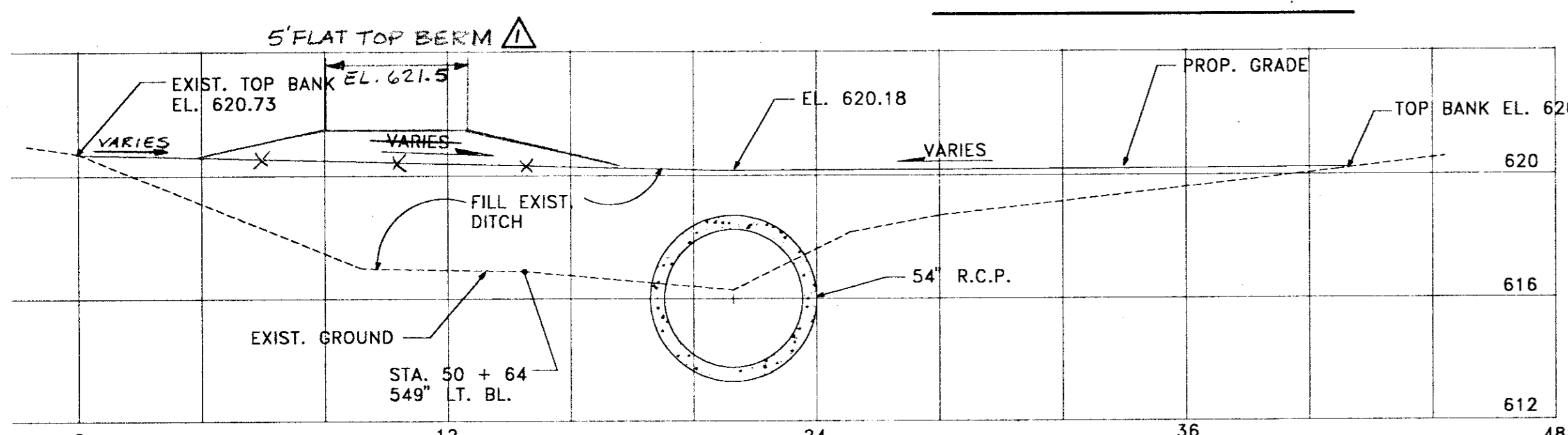


X-SECTION @ STA. 53+86



X-SECTION @ STA. 51+59

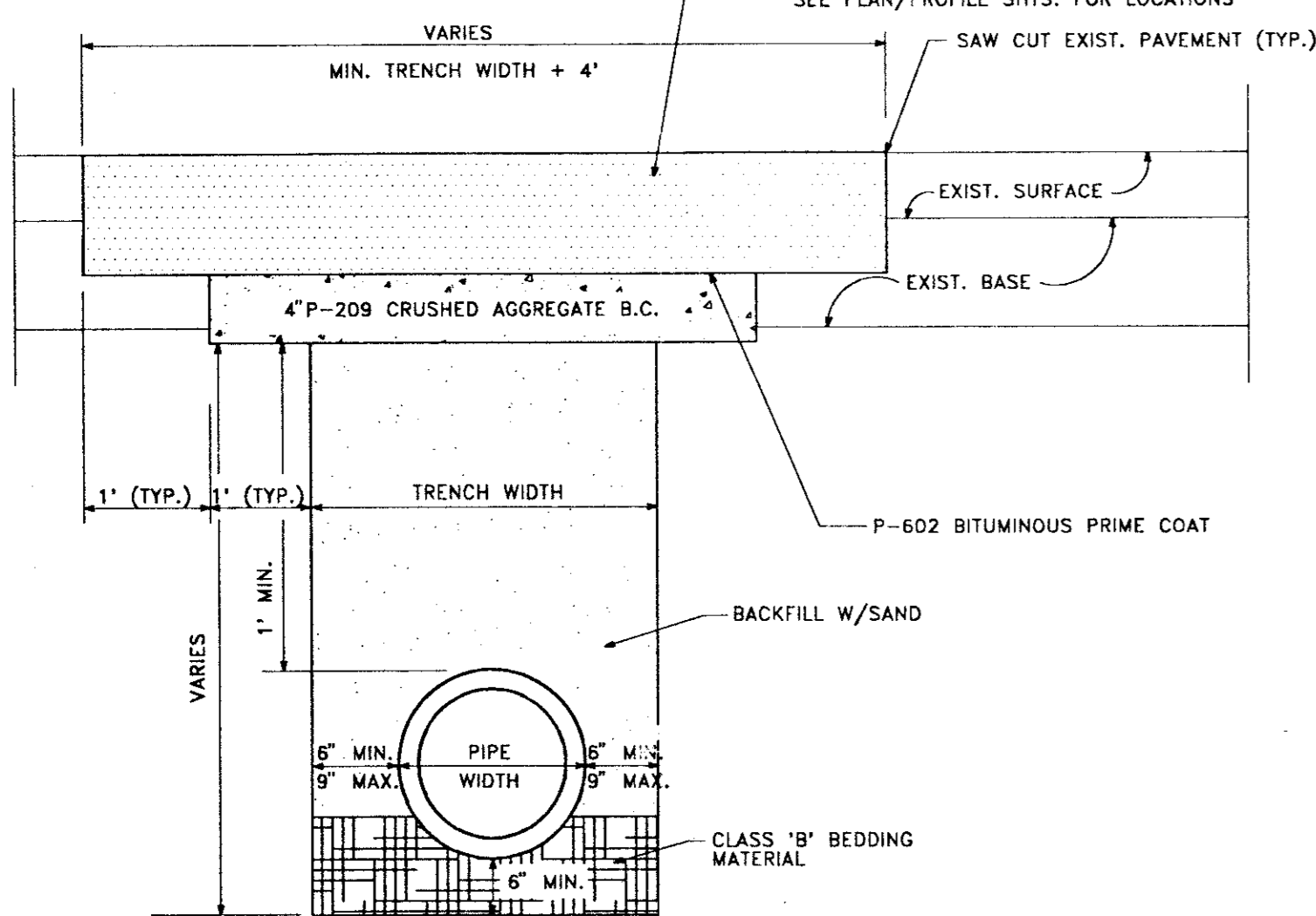


X-SECTION @ STA. 50+64 ( 549' LT. BL. )

X-SECTIONS LINE "I"

SCALE: 1" = 4'-0" HORIZ.  
1" = 4'-0" VERT.

4" TEXAS SDHPT 340, TYPE D BITUMINOUS SURFACE COURSE AND  
5" TEXAS SDHPT 340, TYPE B BITUMINOUS BASE COURSE  
OR  
7" P-501 P.C.C. PAVEMENT  
SEE PLAN/PROFILE SHTS. FOR LOCATIONS

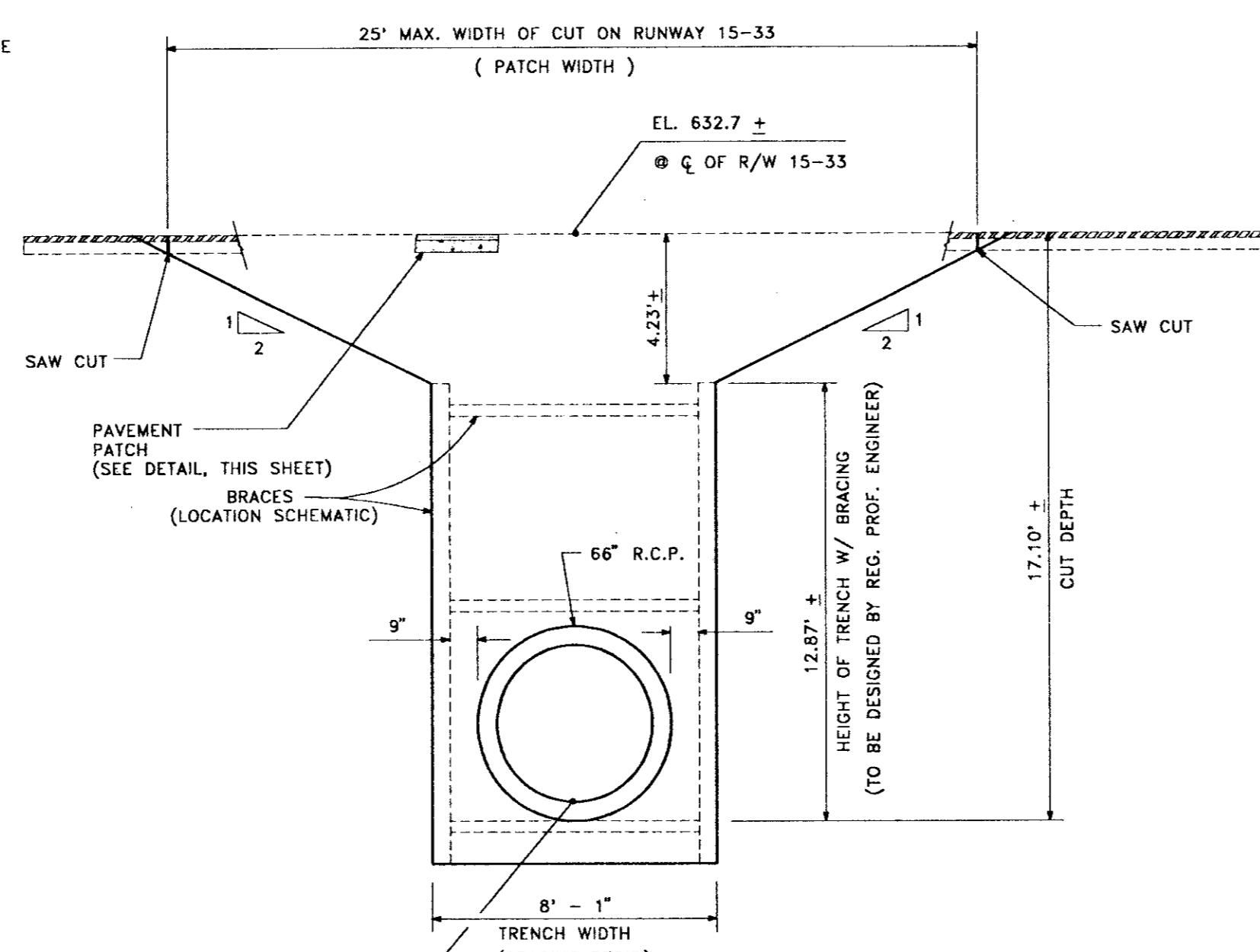


- NOTES: ① ALL EXIST. MARKINGS SHALL BE REPLACED UPON COMPLETION OF PAVING OPERATIONS (NO DIRECT PAY)  
② COST FOR EARTHWORK (EXCAVATION) ASSOCIATED WITH PIPE TRENCH SHALL BE INCIDENTAL TO THE PRICE OF THE PIPE.

PAVEMENT REPLACEMENT DETAIL

N.T.S.

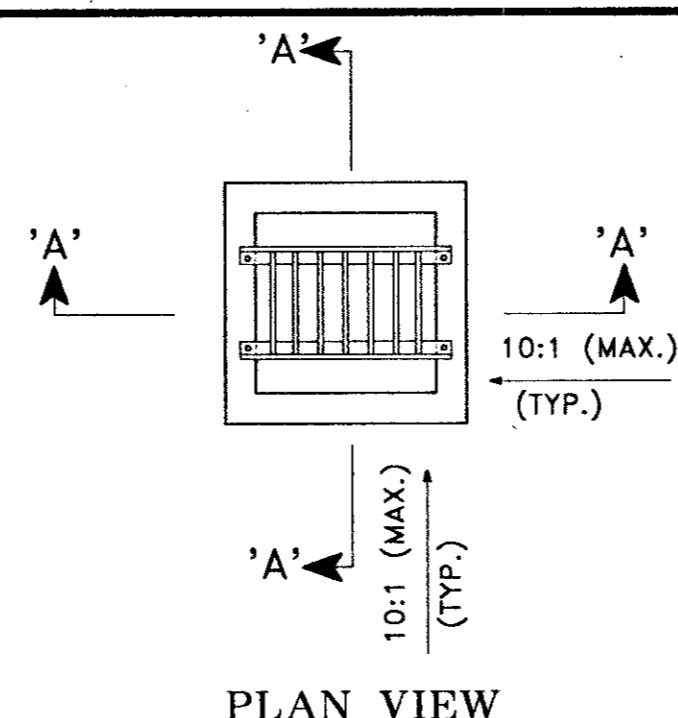
AS PER SPECIFICATION D-701-3.2A RIGID PIPE, THE BEDDING MATERIAL EXTENDS FROM 6" BELOW THE BOTTOM OF THE PIPE UP AROUND THE PIPE TO A HEIGHT NOT LESS THAN 30% OF THE PIPE'S VERTICAL OUTSIDE DIAMETER.



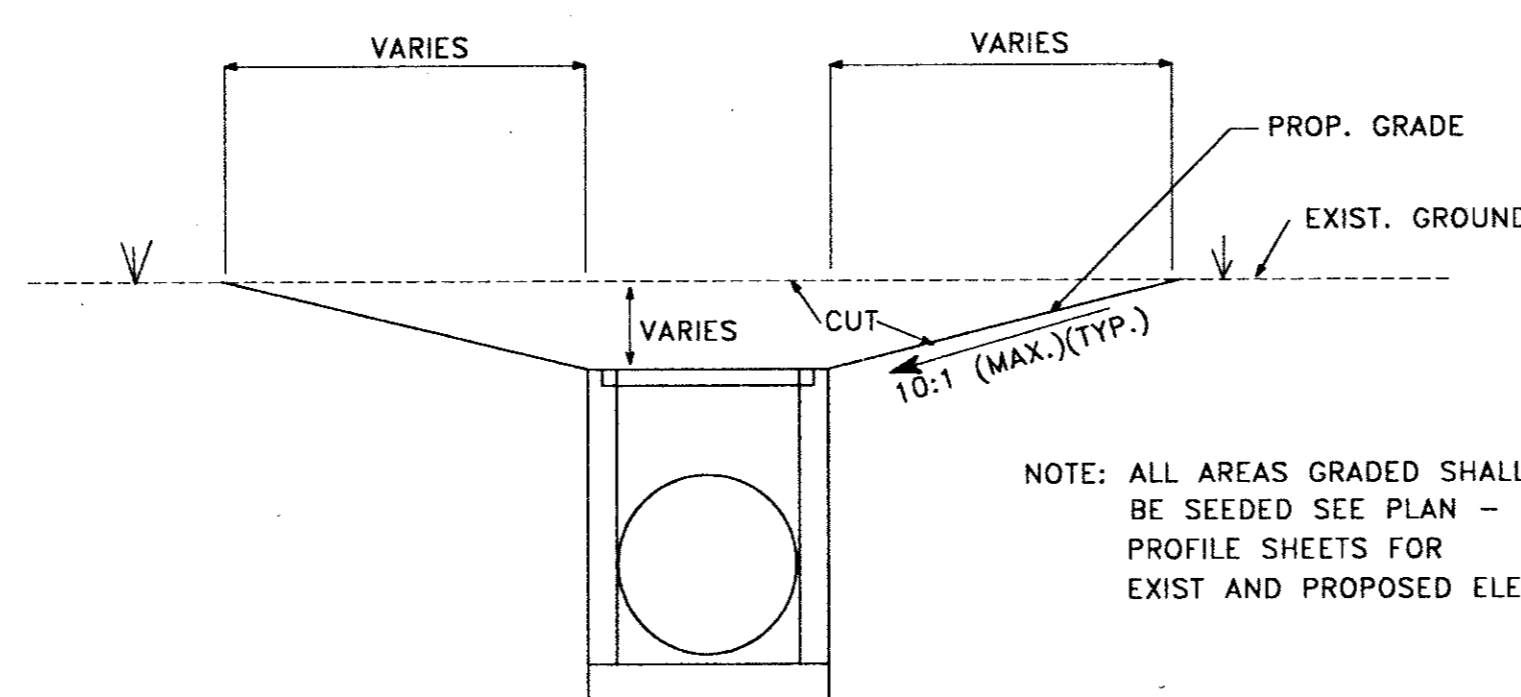
NOTE: SHORING, SHEETING, AND/OR BRACING OF TRENCH WALLS FOR TRENCHES DEEPER THAN 5' SHALL BE SIZED AND SPACED IN ACCORDANCE WITH TABLE P - 2 OF THE OSHA EXCAVATING OPERATIONS MANUAL ( FOR ALL CATAGORIES OF EARTH, 10 - 15 FOOT DEEP) (COST OF BRACING INCIDENTAL TO PRICE FOR PIPE)

TRENCH SAFETY DETAIL

N.T.S.



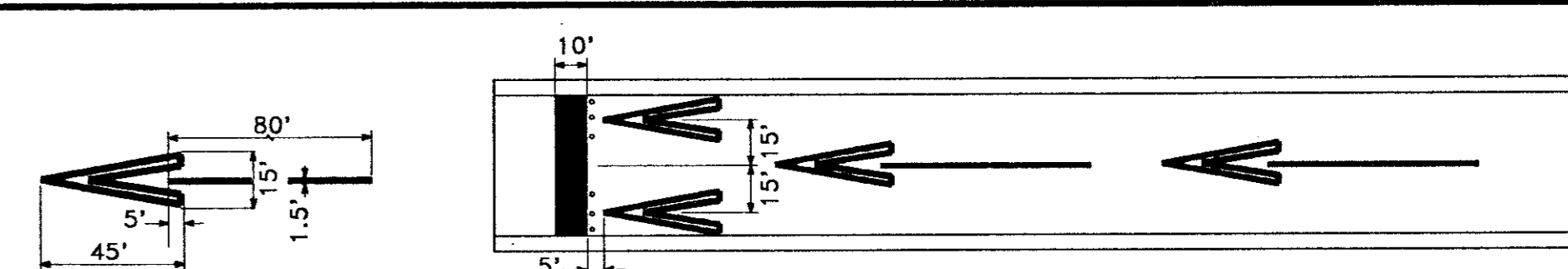
PLAN VIEW



SECTION 'A - A'

TYPICAL INLET GRADING DETAILS

N.T.S.

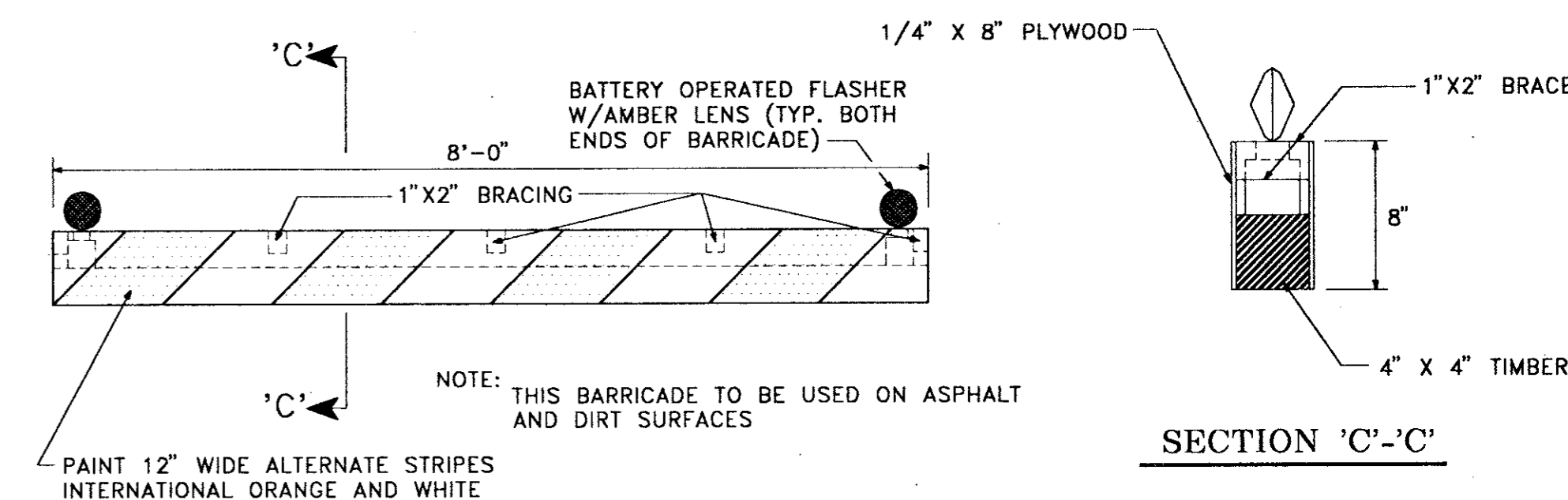


NOTES:

- ALL MARKINGS IN THE RELOCATED AREA ARE YELLOW EXCEPT THE THRESHOLD BAR WHICH IS WHITE. USE 1/2 NORMAL APPLICATION RATE. EXISTING RUNWAY STRIPE WILL BE REMOVED BEFORE DISPLACED THRESHOLD MARKINGS ARE PLACED. PRIOR TO OPENING NEW RUNWAY REMOVE ALL TEMPORARY MARKINGS BY WATER OF SAND BLASTING.
- SIX TEMPORARY BATTERY OPERATED STEADY BURNING LIGHTS WILL BE PLACED AT DUSK AT DISPLACED THRESHOLD LOCATION. LENSES WILL BE GREEN ON ONE SIDE (APPROACH END) AND RED ON THE OTHER (DEPARTURE DIRECTION)
- REMOVING EXISTING RUNWAY STRIPE, PLACING THRESHOLD MARKINGS, TEMPORARY LIGHTS AND REMOVING TEMPORARY MARKINGS AND REPLACING ORIGINAL THRESHOLD MARKINGS SHALL BE PAID UNDER ITEM S-4.

RELOCATED THRESHOLD MARKINGS

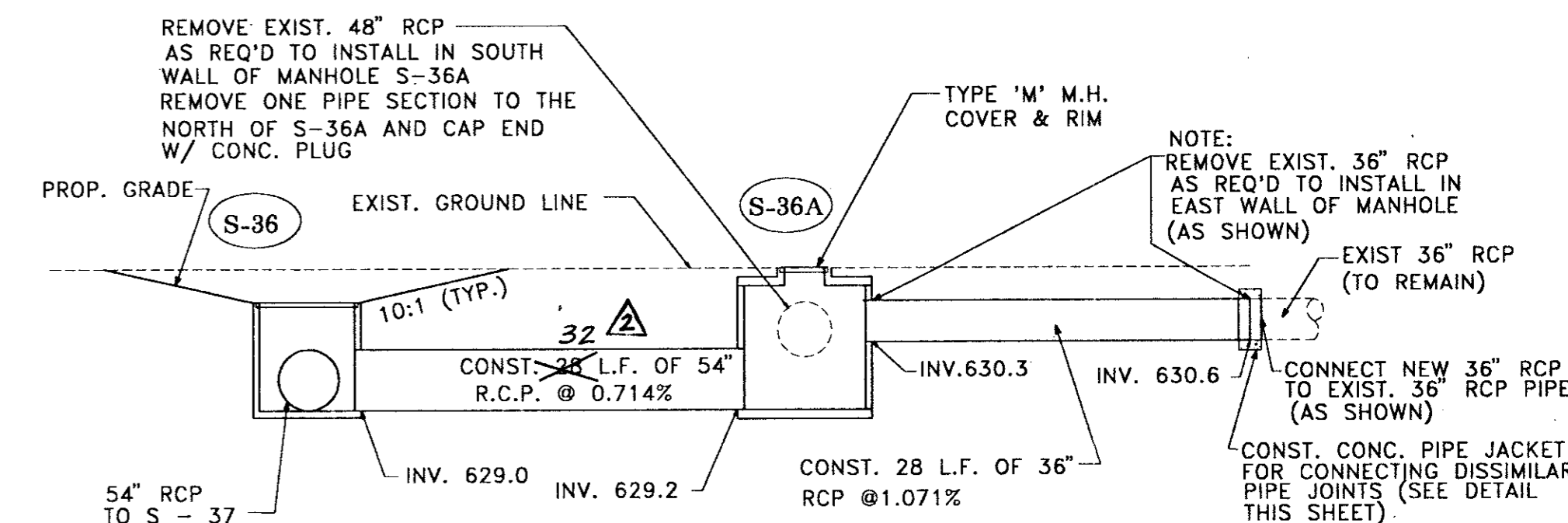
N.T.S.



ELEVATION

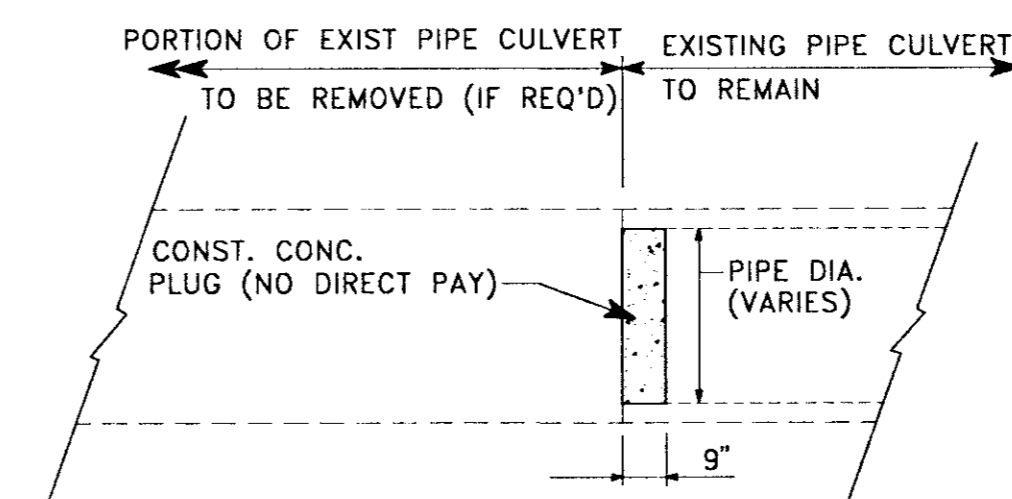
TIMBER BARRICADE (TYPE "A" )

N.T.S.



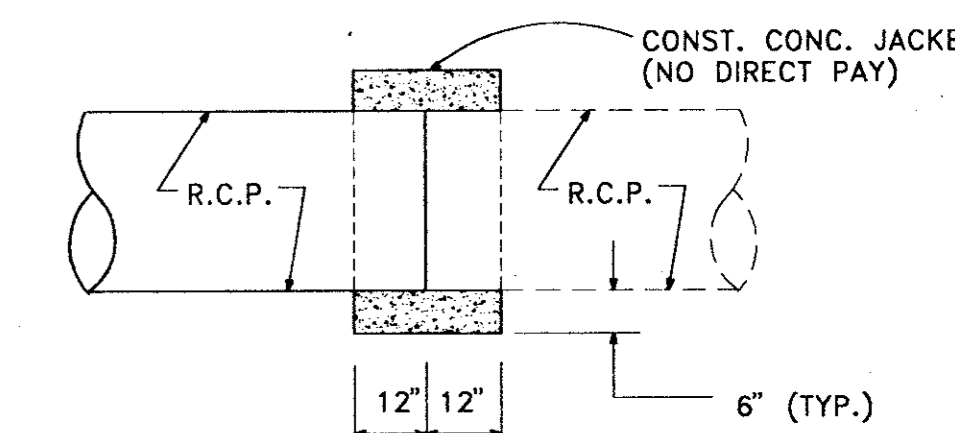
STRUCTURE SECTION - S-36 TO S-36A

N.T.S.



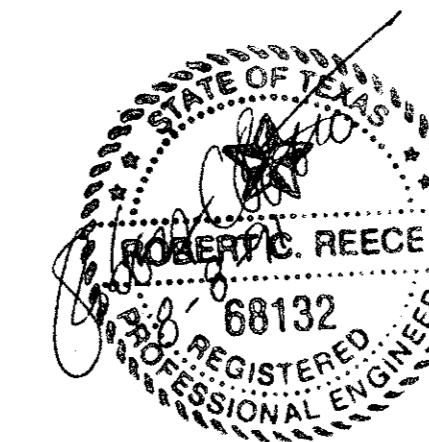
CONCRETE PLUG DETAIL

N.T.S.



CONC. JACKET DETAIL

N.T.S.



AS BUILT

JUL 30 1992

DESIGN: R.C.R.	A.I.P. NO.: 3-48-0063-03-91	APPENDIX NO. 1	JRH
DRAWN: M.J.G.	S.P. NO.:	AS BUILT	JRH
CHECKED: D.W.P.	JOB NO.: Y8024.22	REVISED SECTIONS & REVISIONS	JRH
SCALE: AS NOTED		Date	By

**Greiner**  
Greiner, Inc.  
Fort Worth, Texas  
Engineers, Architects  
and Planners



ADDISON AIRPORT

DRAINAGE IMPROVEMENTS  
MISCELLANEOUS DETAILS

SHEET  
15  
DATE: SEPT. 1992