

ADDISON MUNICIPAL AIRPORT ADDISON, TEXAS DRAINAGE IMPROVEMENTS

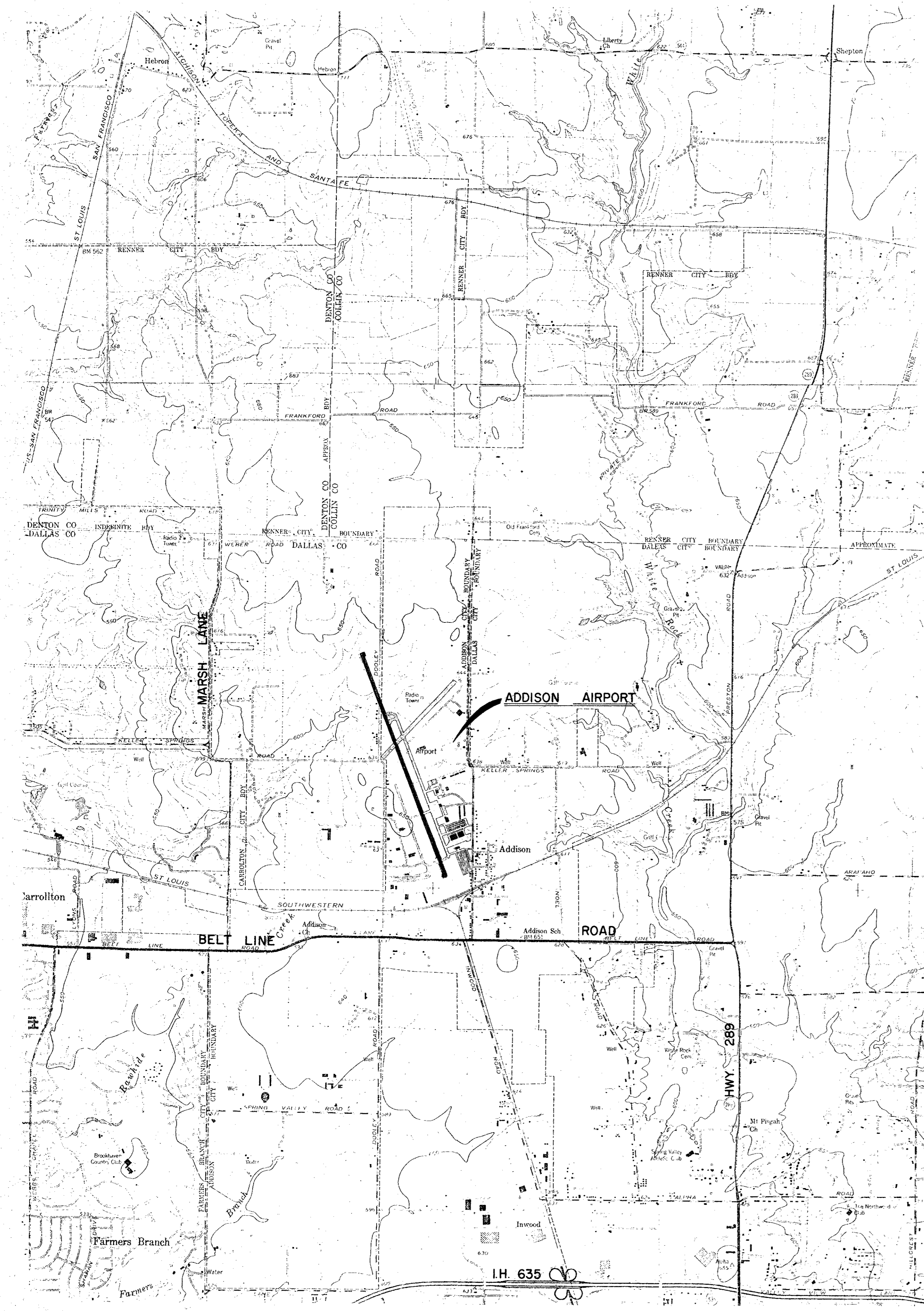
ADAP PROJECT NO. 5-48-0063-03

JERRY REDDING, MAYOR

ALDERMAN

BILL SELLMAYER TERRY ROBERTS
JOHN B. ALLEN JERRY D. EASOM
RICHARD RODER

C. J. WEBSTER, CITY MANAGER
RALPH SEELY, DIRECTOR OF FINANCE
HENRY STUART, DIRECTOR OF AVIATION



SUMMARY OF QUANTITIES

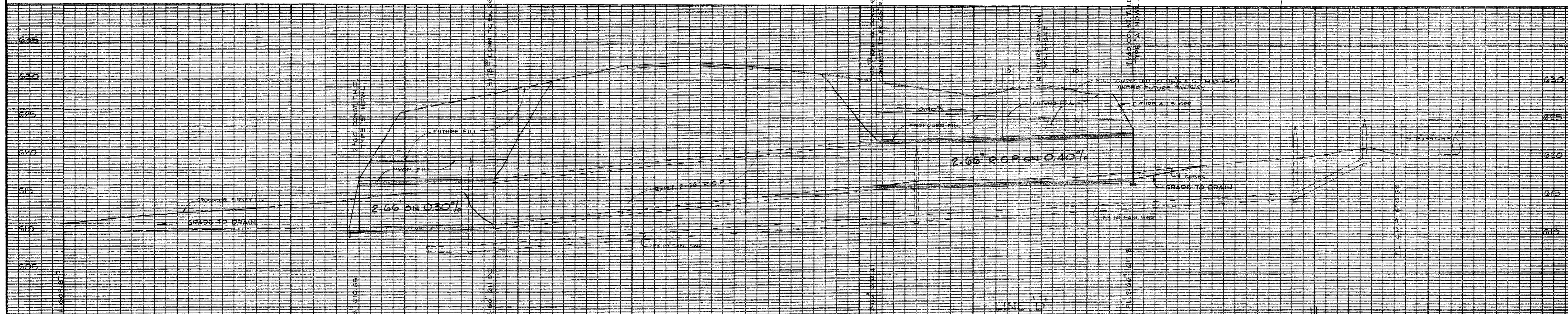
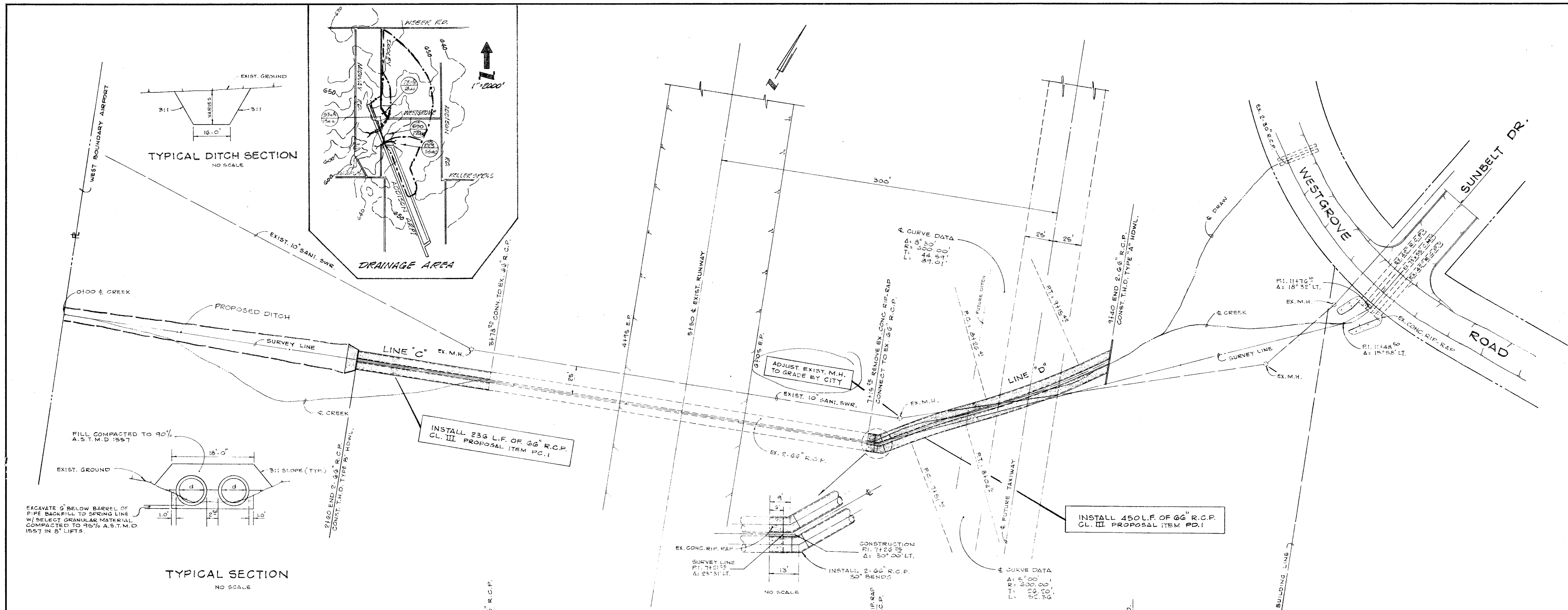
ITEM	PARTICIPATING		NON-PARTICIPATING	
	ESTIMATED	AS BUILT	ESTIMATED	AS BUILT
LINE "A"				
PA.1 60" R.C.P., CL. III	202 L.F.			
PA.2 ASPH. P.V.M.T. REPAIR	20 S.Y.			
PA.3 CONST. CH-II-B HDWL - 60" R.C.P.	4 C.Y.			
PA.4 EXCAVATE OPEN CHANNEL	830 C.Y.			
LINE "B"				
PB.1 60" R.C.P., CL. III	183 L.F.			
PB.2 60" R.C.P., CL. IV	78 L.F.			
PB.3 CONST. CH-II-B HDWL - 60" R.C.P.	4 C.Y.			
LINE "C"				
PC.1 66" R.C.P., CL. III	236 L.F.			
PC.2 CONST. CH-II-B HDWL - 2-66" R.C.P.	73 C.Y.			
PC.3 EXCAVATE OPEN CHANNEL	580 C.Y.			
LINE "D"				
PD.1 66" R.C.P. CL. III	450 L.F.			
PD.2 42" R.C.P. CL. III	30 L.F.			
PD.3 CONST. CH-II-A HDWL 2-66" R.C.P.	11 C.Y.			

NOTES

1. No construction traffic shall be permitted in operational areas.
2. Contractor's access routes shall be approved by the engineer prior to use.
3. All required barricades and informational or warning signs shall be placed in a location and manner approved by the engineer.
4. No construction equipment shall be parked in any area except the parking area designated by the engineer.
5. All construction equipment and vehicles shall be provided with a flag placed so as to be readily visible. The flag shall be not less than 3 feet square consisting of a checkered pattern of international orange and white squares of not less than 1 foot on each side.
6. In the event of aircraft emergency, the contractor shall promptly comply with any instructions issued by the airport management.
7. The contractor shall not deviate from the construction sequence without prior approval of the engineer.
8. The contractor shall be responsible for repair of any damage to underground cables. No digging shall be performed without first contacting the local FAA maintenance representative. Any damage to FAA cable or underground facilities shall be repaired in accordance with applicable FAA specifications and in a manner acceptable to the local FAA maintenance representative and the engineer.

Riewe & Wischmeyer, Inc.
CONSULTING ENGINEERS
DALLAS, TEXAS

William J. Wischmeyer



CITY OF ADDISON, TEXAS							
ADDISON MUNICIPAL AIRPORT							
DRAINAGE IMPROVEMENTS							
RIEWS & WISCHMEYER, INC. CONSULTING ENGINEERS							
DESIGN	DRAWN	DATE	SCALE	NOTES	FILE	NO.	
J.W.	J.W.	SEPT. 77	H. 1"=40' V. 1"=8'	R&W	7918	4 of 5	

TABLE OF DIMENSIONS AND QUANTITIES FOR TWO TYPE A HEADWALLS

NO OF PIPES	DIAM OF PIPES	TABLE OF DIMENSIONS										TOTAL QUANTITIES											
		G	K	T	E	H	W	Lgth	Wt	No	Size	LBS	CY										
1	12"	12	9	1-9	2-3	5-0	3-3	15	8	2-6	8	6-8	28	12	4	2-11	23	12	4	3-8	29	98	1.48
2	12"	10				8	3-3	3		8-6	35	14		27	14		34	117		3-4	117	1.81	
3	12"					3-5	3-4			10-4	43	16		31	16		39	137		3-10	137	2.15	
4	12"					2-6	12-2	18		12-2	51	18		35	18		44	156		3-11	156	2.48	
1	15"	12	9	1-9	2-3	8-3	7-11	12	8	3-0	9	7-11	33	12	4	3-2	25	12	4	3-11	31	110	1.82
2	15"					10-6	10-2	15		10-2	42	14		30	14		37	133		3-10	133	2.21	
3	15"					12-9	12-5	19		12-5	52	16		34	16		42	156		3-11	156	2.66	
4	15"					15-0	14-8	22		11-8	61	18		38	18		47	177		3-11	177	3.09	
1	18"	12	9	1-9	3-0	9-6	9-2	14	8	3-6	11	9-2	38	20	4	3-5	46	20	4	4-2	56	165	2.19
2	18"					12-2	11-10	18		11-10	49	22		50	22		61	189		4-2	189	2.70	
3	18"					14-10	14-6	22		14-6	60	24		55	24		67	215		4-2	215	3.21	
4	18"					17-6	17-2	26		17-2	72	26		59	26		72	240		4-2	240	3.73	
1	24"	12	9	2-0	3-6	12-0	11-8	18	8	4-6	14	11-8	49	24	4	3-11	63	24	4	4-11	79	223	3.17
2	24"					15-5	15-1	23		15-1	63	26		68	26		85	253		4-2	253	3.89	
3	24"					18-10	18-6	28		18-3	77	28		73	28		92	284		4-2	284	4.62	
4	24"					22-3	2-11	33		21-11	91	30		79	30		99	316		4-2	316	5.35	
1	30"	12	9	2-3	4-0	4-6	4-2	2-16	5-6	3-3	14-2	5-9	28	4	4-5	83	28	4	5-8	106	302	4.31	
2	30"					8-8	8-4	28		8-4	76	32		9-4	32		121	352		5-2	352	5.28	
3	30"					22-10	22-6	34		22-6	94	36		106	36		136	403		5-2	403	6.26	
4	30"					27-0	26-8	40		26-8	111	40		118	40		152	454		5-2	454	7.24	
1	36"	12	12	2-6	4-6	7-0	6-8	25	16	6-6	39	16-8	10	32	4	5-2	111	32	4	6-8	143	388	6.40
2	36"					21-1	21-7	32		21-7	90	36		124	36		160	445		6-8	445	7.89	
3	36"					26-10	26-6	40		26-6	111	40		138	40		178	506		6-8	506	9.37	
4	36"					31-3	31-5	47		31-5	131	44		152	44		196	565		6-8	565	10.85	
1	42"	12	12	2-9	5-0	9-6	9-2	29	16	7-6	45	19-2	80	36	4	5-8	136	36	4	7-5	178	448	8.10
2	42"					25-2	24-10	37		24-10	101	40		152	40		198	536		7-5	536	9.96	
3	42"					30-10	30-6	46		30-6	127	44		167	44		218	603		7-5	603	11.80	
4	42"					36-6	36-2	54		36-2	151	48		182	48		238	670		7-5	670	13.68	
1	48"	15	12	3-0	5-9	23-0	22-8	34	24	8-9	79	22-8	95	40	5	6-5	268	40	5	8-5	351	827	10.74
2	48"					29-5	29-1	44		29-1	121	44		295	44		386	925		8-5	925	13.08	
3	48"					35-0	35-2	53		35-2	148	48		321	48		422	1023		8-5	1023	15.33	
4	48"					42-3	4-11	63		4-11	175	60		448	60		547	1122		8-5	1122	17.77	
1	54"	15	12	3-3	6-3	25-3	25-2	38	24	9-9	85	25-2	101	44	5	6-11	314	44	5	9-2	421	970	12.87
2	54"					32-0	32-6	49		32-6	144	50		361	50		478	1112		9-2	1112	15.77	
3	54"					40-2	39-0	60		39-0	166	60		404	60		536	1254		9-2	1254	18.66	
4	54"					47-3	47-2	71		47-2	191	62		441	62		593	1396		9-2	1396	21.55	
1	60"	15	12	3-6	6-9	28-0	27-8	42	24	10-9	97	27-8	118	48	5	7-5	371	48	5	9-11	497	1122	15.20
2	60"					32-0	35-8	54		35-8	134	50		48	54		559	1277		9-11	1277	18.55	
3	60"					44-0	43-8	66		43-8	160	60		434	60		673	1430		9-11	1430	21.89	
4	60"					52-0	51-8	78		51-8	186	66		511	66		683	1585		9-11	1585	25.24	
1	66"	15	12	3-9	7-3	30-3	30-3	45	32	11-9	114	30-3	136	52	5	8-11	430	52	5	10-8	573	1321	17.75
2	66"					39-1	38-9	58		38-9	146	58		479	58		615	1405		10-8	1405	21.49	
3	66"					47-8	47-4	78		47-4	193	66		529	66		716	1651		10-8	1651	25.27	
4	66"					56-3	55-8	84		55-8	233	70		578	70		779	1815		10-8	1815	29.05	
1	72"	15	12	4-0	7-9	33-0	32-8	44	32	12-9	133	32-8	156	60	5	8-11	440	60	5	11-5	583	1497	20.42
2	72"					42-2	41-0	65		41-0	175	62		514	62		673	1673		11-5	1673	24.66	
3	72"					51-4	51-0	77		51-0	213	68		597	68		810	1850		11-5	1850	28.89	
4	72"					60-2	60-2	90		60-2	251	74		650	74		881	2025		11-5	2025	33.12	

TABLE OF DIMENSIONS AND QUANTITIES FOR TWO TYPE B HEADWALLS

NO OF PIPES	DIAM OF PIPES	TABLE OF DIMENSIONS										TOTAL QUANTITIES																										
		G	K	X	H	Y	W	No	Av	Lgth	Wt	LBS	CY																									
1	12"	12	9	2-0	1-0	2-4	2-2	8	4	6	2-6	6		4	5		2-0	17	8	4	2-2	12	2-8	4	8	5	4	2-11	8	7-8	7	68	52					
2	12"					4-2	4-6	6	8		9						5-8	47	16		23	6-4	10									122	111					
3	12"					6-0	6-4	8	10		11						7-6	63	20		29	8-2	12									151	140					
4	12"					7-10	8-2	11	12		11						9-9	75	20		32	10-4	16									191	178					
1	15"	12	9	2-7	2-3	1-6	3-2	4	3-0	8	6	3-0	7	4	1-10	3	8	11		2-3	19	8	4	2-5	13	3-7	5	1-3	10	8	3-0	16	2-3	9	101	75		
2	15"					4-10	5-3	14	8		9						4-8	38	12		19	5-10	9									138	116					
3	15"					7-12	7-6	20	10		11						6-9	56	16		26	8-1	12									174	157					
4	15"					9-4	9-9	26	14		16						9-0	75	20		32	10-4	16									214	198					
1	18"	12	9	2-11	2-6	2-0	4-0	1	3-10	10	6	3-6	8	4	1-10	3	8	11	4	1-0	2	2-7	22	8	4	2-8	14	4-5	7	1-10	15	12	3-2	25	2-11	12	129	100
2	18"					5-7	6-6	17	8		11						5-3	44	12		21	7-1	11										172	155				
3	18"					8-3	9-2	25	12		16						7-11	66	16		29	9-9	15										219	211				
4	18"					10-11	11-10	32	16		21						10-7	88	20		36	12-5	19										264	265				
1	24"	12	9	2-3	3-0	5-9	5-5	6	5-0	20	6	4-6	10	4	1-10	3	8	11	4	1-0	2	3-2	26	8	4	3-2	17	6-2	9	3-0	24	16	3-5	37	4-2	17	176	162
2	24"					6-11	6-11	34	10		17						6-7	55	12		25	9-7	14											239	246			
3	24"					10-4	11-10	47	16		27						9-10	32	16		34	13-0	20											304	332			
4	24"					13-9	15-3	61	20		34						13-5	112	20		42	16-5	25											368	418			
1	30"	12	9	2-3	4-0	4-6	4-2	2-16	5-6	3-3	14-2	5-9	28	4	4-5	83	28	4	5-8	106	302	4.31																
2	30"					8-8	8-4	28		8-4	76	32		9-4																								