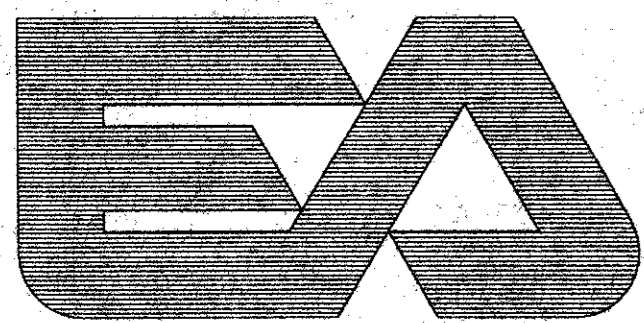


AIRPORT
FUEL PADS
AI-10

PLANS FOR ADDISON AIRPORT FUEL FARM SPILL CONTAINMENT PADS ADDISON, TEXAS

PREPARED BY

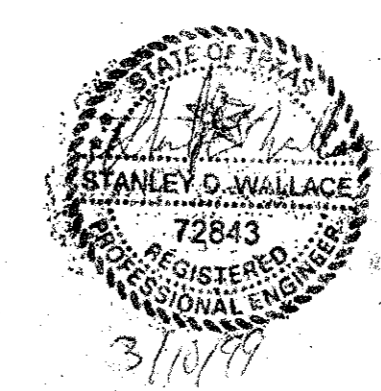


EA ENGINEERING,
SCIENCE, AND
TECHNOLOGY, INC.

1420 VALWOOD PARKWAY
SUITE 170
CARROLLTON, TEXAS 75006
(972) 484-1420

ALASKA	MARYLAND
CALIFORNIA	MASSACHUSETTS
COLORADO	NEBRASKA
DELAWARE	NEW JERSEY
FLORIDA	NEW YORK
GEORGIA	NORTH CAROLINA
HAWAII	TEXAS
ILLINOIS	WASHINGTON

NO.	DESCRIPTION
1	TITLE SHEET
2	SPILL CONTAINMENT PADS
3	DETAILS



CONSTRUCTION SET
 ISSUED BY
 TOWN OF ADDISON
 PUBLIC WORKS DEPARTMENT
 DATE: 11/7/99 DATE: 11/5/99
 As Built Submitted By
 Riverway Contractors
 Dick Hightower
 5-31-00

AI-10

GENERAL NOTES:

1. THE CONTRACTOR SHALL NOT ALLOW SOIL AND DEBRIS TO ENTER STORM SEWER INLETS.
2. ALL DISTURBED/DAMAGED AREAS SHALL BE REPAIRED AND/OR REPLACED AT CONTRACTORS EXPENSE.
3. THE CONTRACTOR SHALL NOT DISPOSE OF WASTES OR ANY OTHER MATERIALS INTO STREAMS OR WATER WAYS! EXCESS MATERIAL SHALL BE HAULED AWAY.
4. THE CONTRACTOR SHALL NOT BURN OR BURY RUBBISH AND WASTE MATERIALS ON PROJECT SITE.
5. THE LOCATION OF EXISTING UTILITIES SHOWN ON THESE PLANS IS APPROXIMATE. IT IS THE RESPONSIBILITY OF THE CONTRACTOR TO LOCATE AND VERIFY IN THE FIELD ANY UTILITIES THAT MAY CONFLICT WITH CONSTRUCTION.
6. PAD 6 SHALL HAVE ENTRY/EXIT RAMPS ON THREE SIDES; NORTH, EAST, AND SOUTH; AND SHALL HAVE AN INTEGRAL CURB ON THE WEST SIDE ONLY. CUT AND REMOVE EXISTING CONCRETE AT DRIVEWAY FOR PAD INSTALLATION. DOWEL PAD TO DRIVEWAY CONCRETE USING #3 BARS 15 INCHES O.C. EXTEND DOWELS AT LEAST 15 INCHES INTO BOTH THE EXISTING AND THE NEW CONCRETE.



PERIMETER ROAD

ROSCOE TURNER

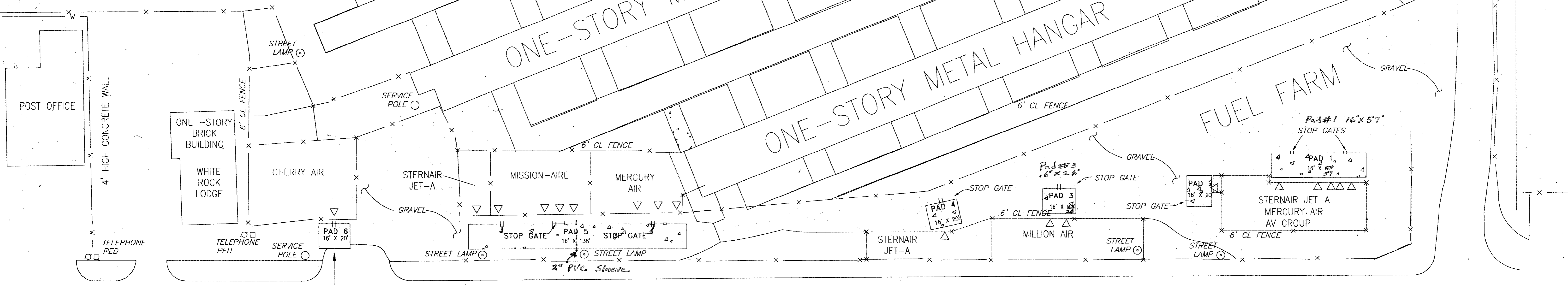
ONE-STORY METAL HANGAR

ONE-STORY METAL HANGAR

ONE-STORY METAL HANGAR

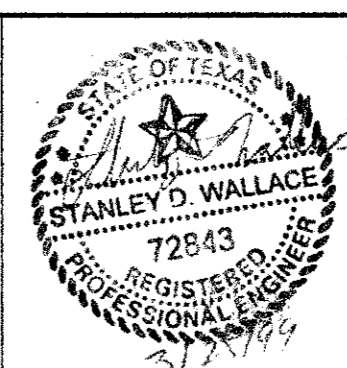
FUEL FARM

ADDISON ROAD



LEGEND	
-x-	CHAIN LINK FENCE
-w-	CONCRETE WALL
	STOP GATE
▽	FUEL LOAD/OFF LOADING POINTS

REVISIONS			
NO.	DATE	BY	DESCRIPTION



ADDISON AIRPORT
FUEL FARM
ADDISON, TEXAS

SPILL CONTAINMENT PADS

EA ENGINEERING, SCIENCE, AND TECHNOLOGY, INC.

1420 VALWOOD PARKWAY
SUITE 170
CARROLLTON, TEXAS 75006
(972) 484-1420

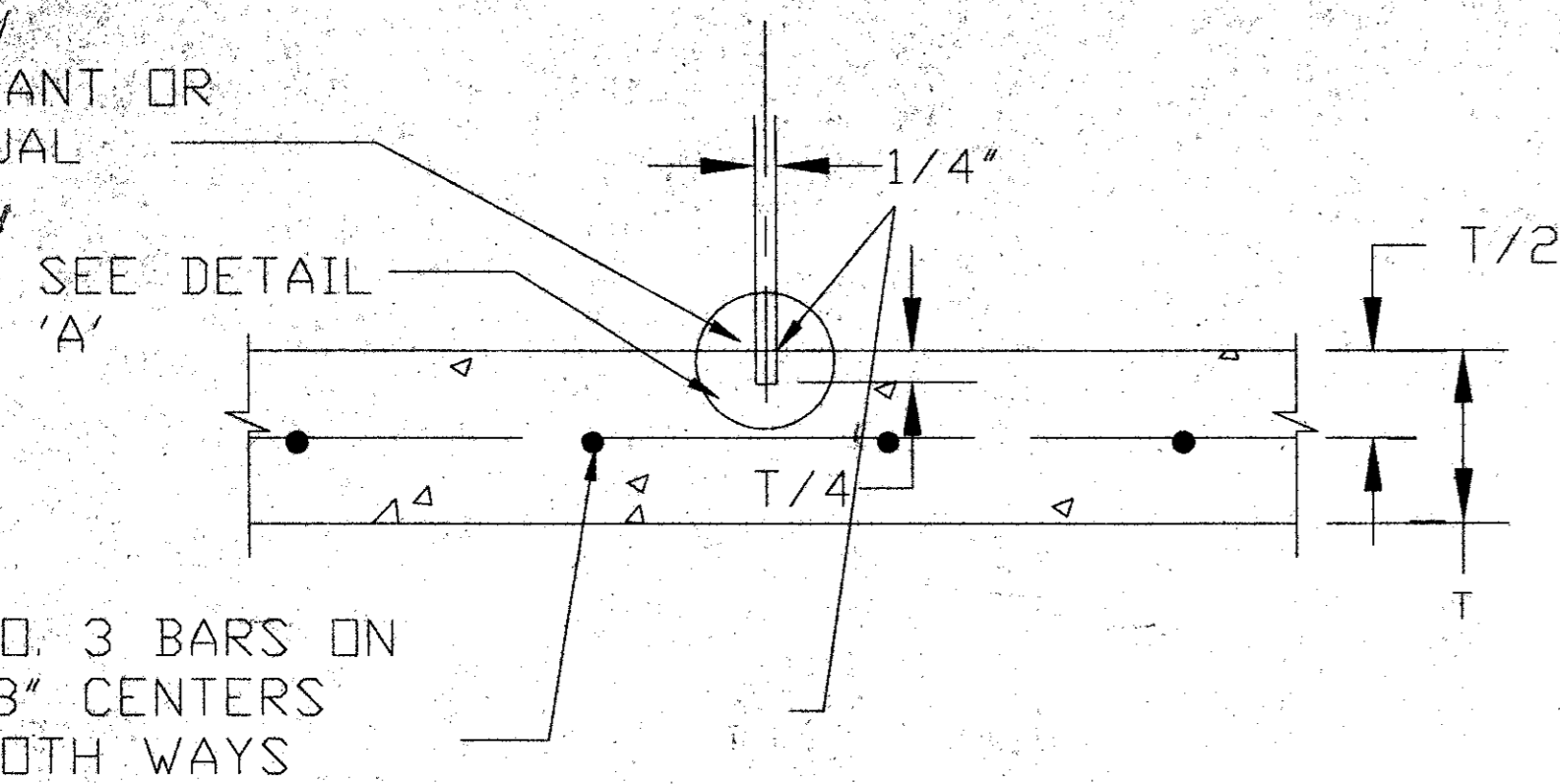
ALASKA CALIFORNIA COLORADO DELAWARE FLORIDA GEORGIA HAWAII ILLINOIS MARYLAND MASSACHUSETTS MISSOURI NEBRASKA NEW JERSEY NEW YORK NORTH CAROLINA NORTH DAKOTA OREGON SOUTH CAROLINA TEXAS WASHINGTON

DATE: 02-26-99
DESIGNED BY: -
DRAWN BY: DED
CHECKED BY: SW
PROJECT MANAGER: SW.

PROJECT NUMBER: 13457.01
SCALE: 1" = 30'
FILE NAME: D_SIZE
DRAWING NUMBER: -
SHEET NUMBER: -

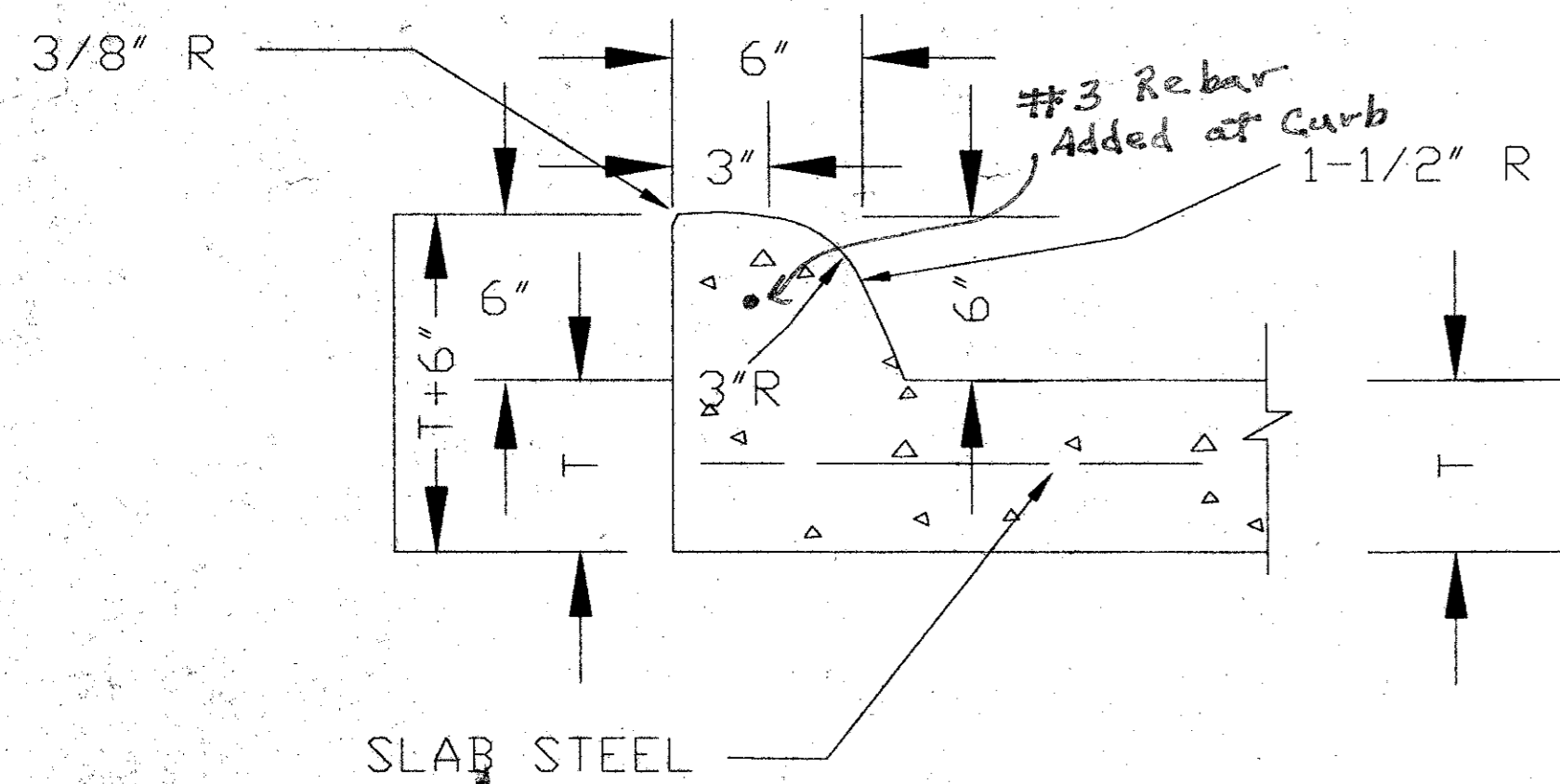
FILLED JOINTS WITH
SDF-SEAL LOW
MODULUS SEALANT OR
APPROVED EQUAL

Sonomeric #1

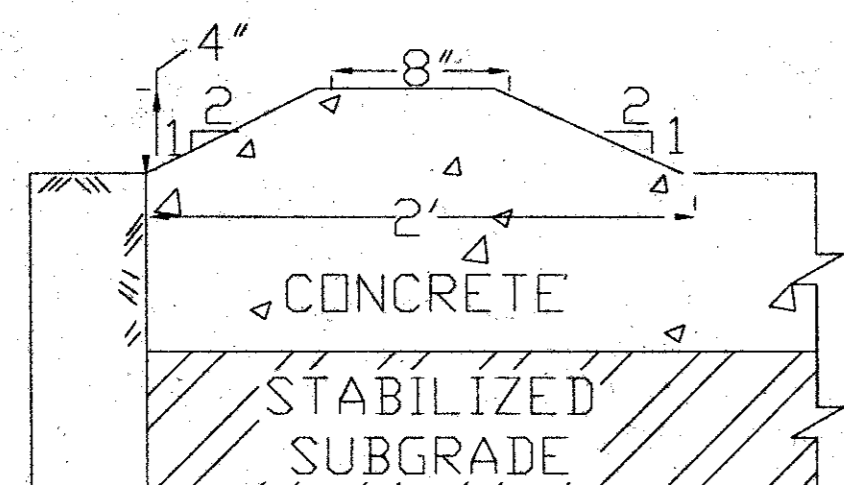


SAWED DUMMY JOINT

1. JOINTS IN CONCRETE SHALL NOT EXCEED 15 FEET

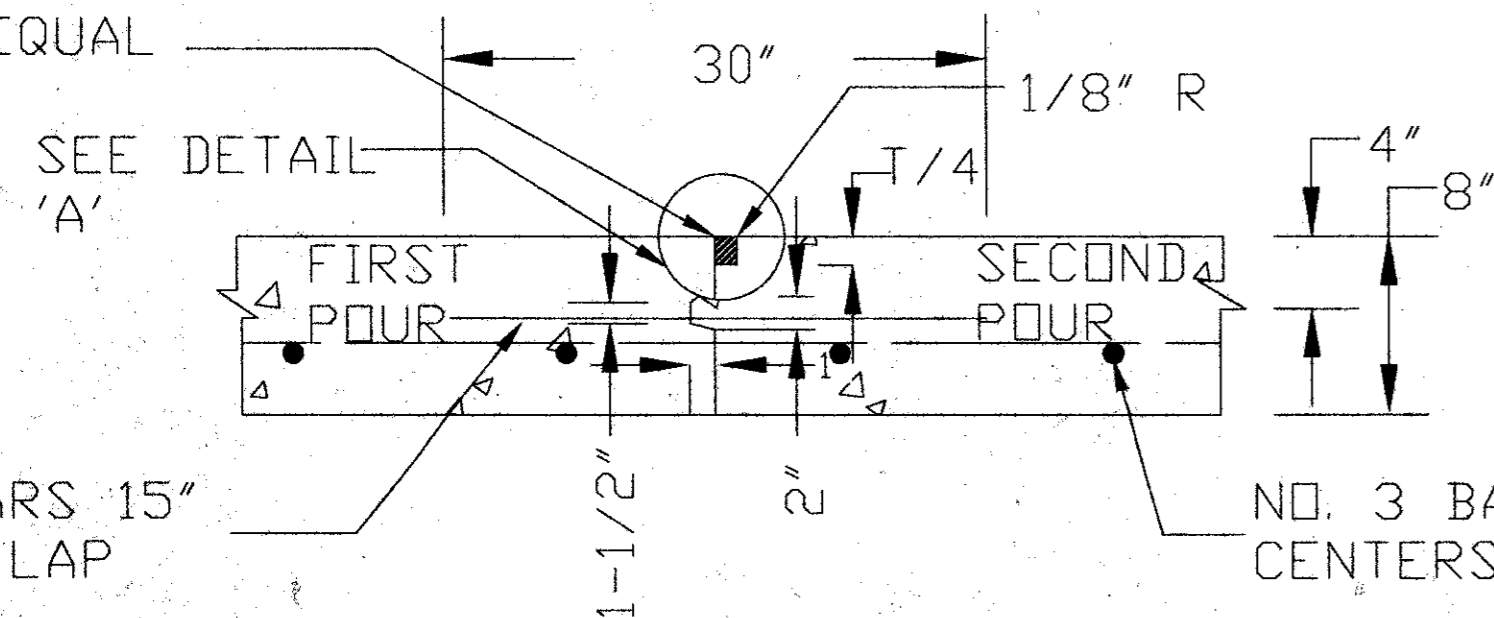


INTEGRAL CURB DETAIL



ENTRY/EXIT RAMP DETAIL

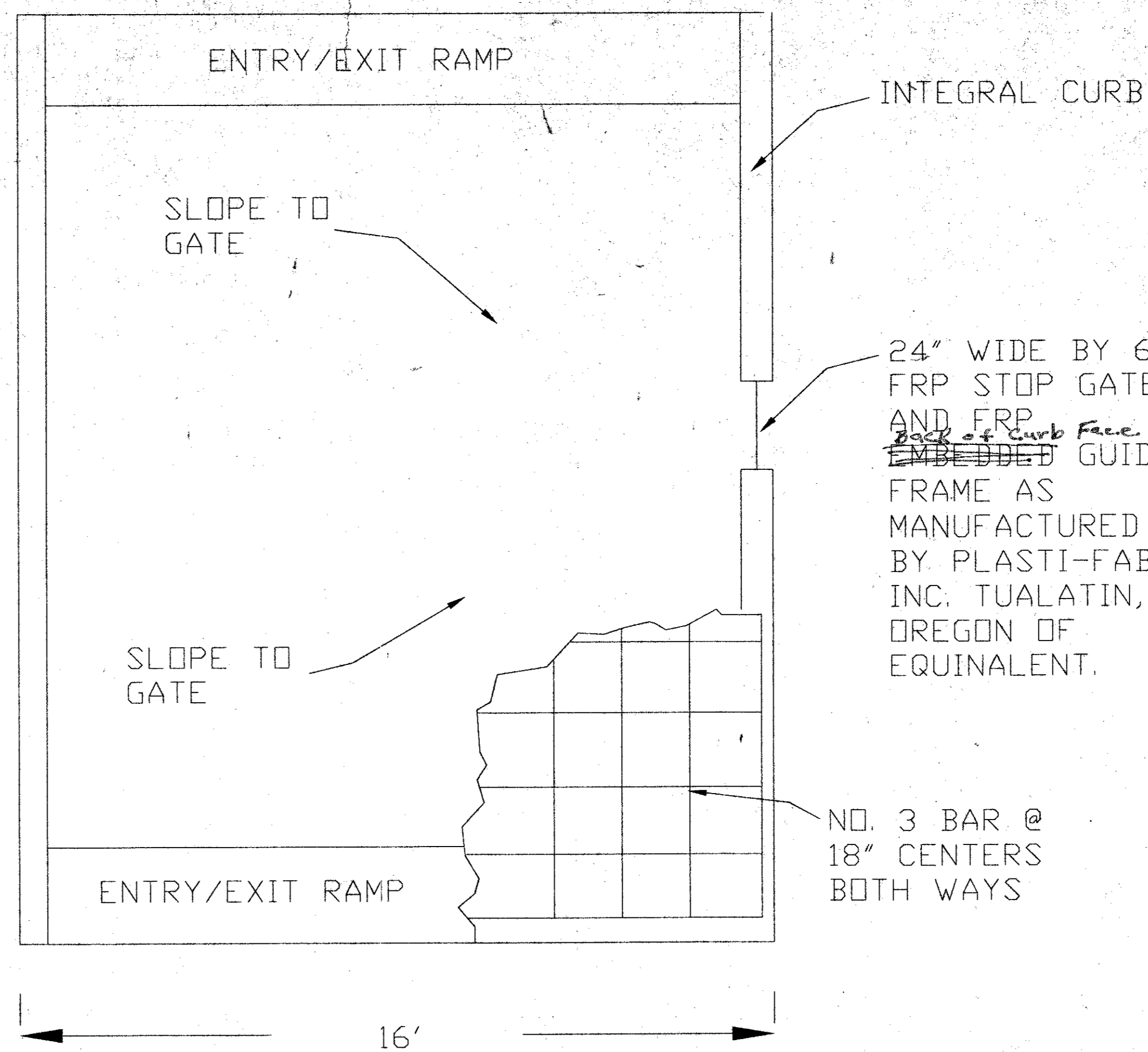
1/2" TOOLED JOINT
FILLED WITH
SDF-SEAL LOW
MODULUS SEALANT OR
APPROVED EQUAL



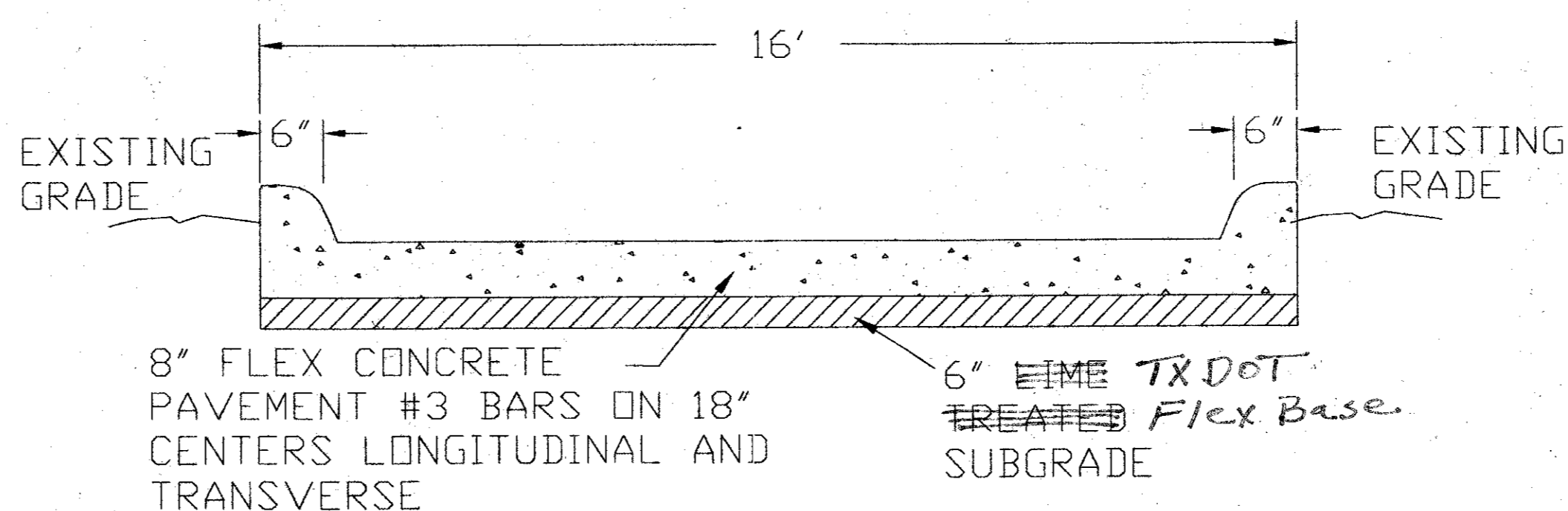
CONSTRUCTION JOINT

1. DOWEL BARS SHALL BE DRILLED INTO PAVEMENT HORIZONTALLY BY USE OF A MECHANICAL RIG.
2. DRILLING BY HAND IS NOT ACCEPTABLE! PUSHING DOWEL BARS INTO GREEN CONCRETE IS NOT ACCEPTABLE.

LENGTH VARIES
BETWEEN 20FT
AND 138FT.
(SEE SHEET 1)

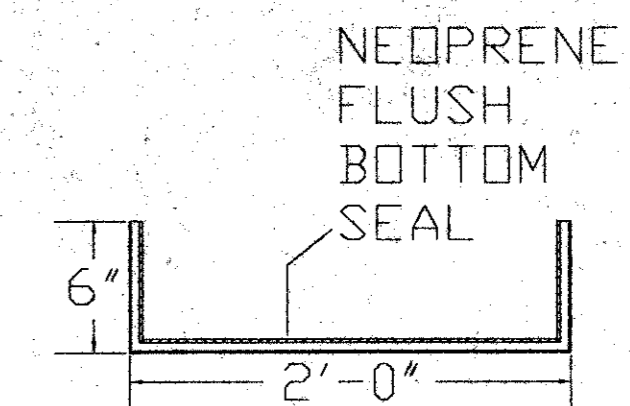


TYPICAL FUEL CONTAINMENT SLAB



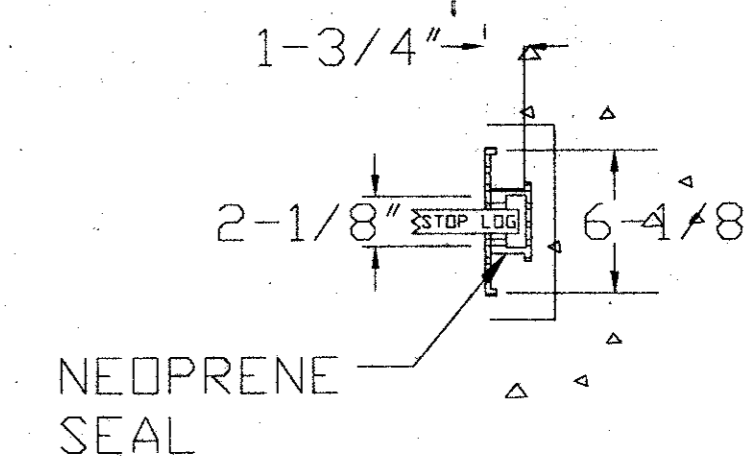
TYPICAL SECTION

1. CONCRETE SHALL BE CLASS P, TXDOT ITEM 421
2. SUBGRADE SHALL BE STABILIZED WITH 6% HYDRATED LIME (BY DRY WEIGHT, APPROXIMATELY 27lbs. PER SQ. YARD) PER TXDOT ITEM 260, COMPACTED TO NOT LESS THAN 95% OF THE STANDARD PROCTOR MAXIMUM DRY DENSITY (ASTM D 698) WITHIN THE RANGE 0 TO 4 PERCENTAGE POINTS ABOVE THE MIXTURES OPTIMUM MOISTURE CONTENT.

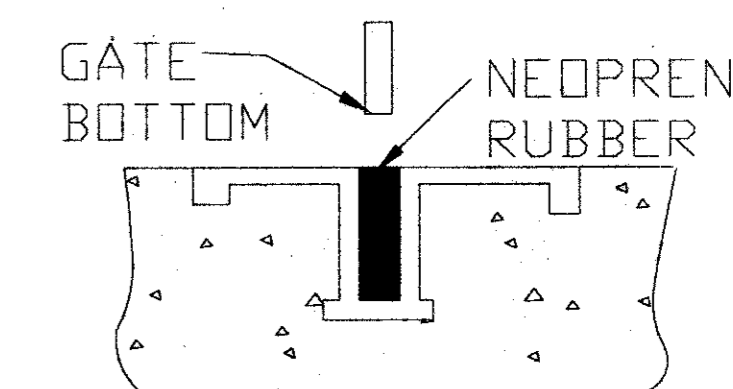


FRP GUIDE FRAME

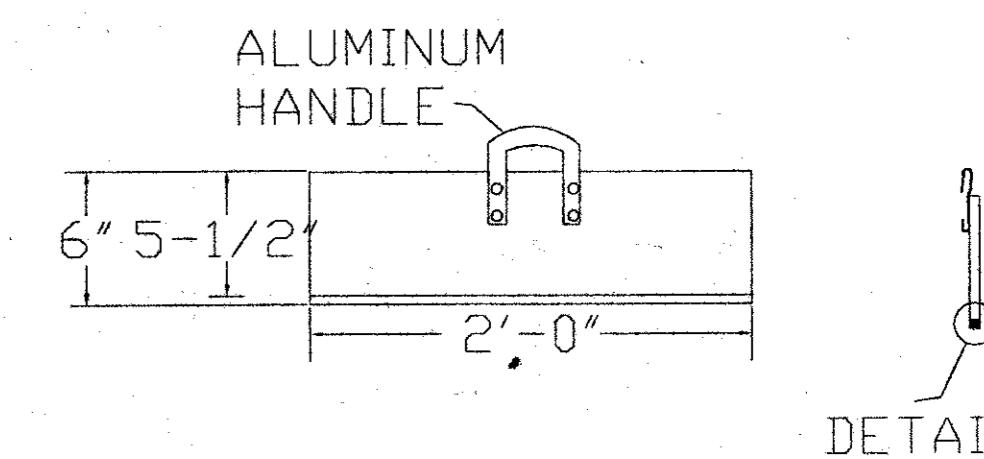
See Submittals



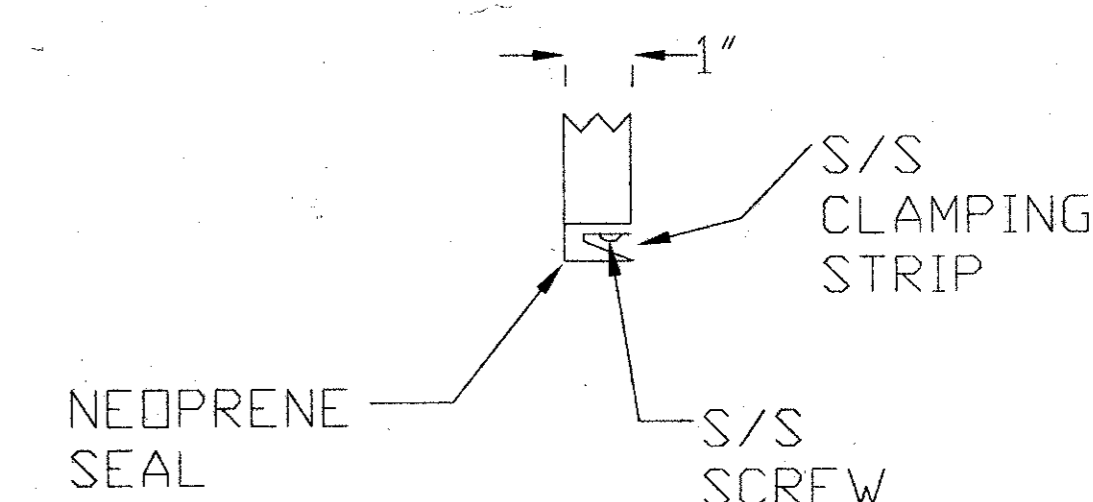
SIDE GUIDE SECTION



FLUSH BOTTOM SIDE SEAL

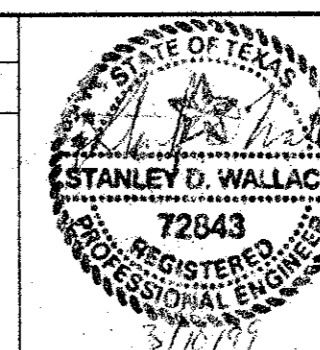


GATE



GATE BOTTOM DETAIL

REVISIONS			
NO.	DATE	BY	DESCRIPTION



DATE 02-26-99
DESIGNED BY
DRAWN BY DED
CHECKED BY SW
PROJECT MANAGER SW

EA ENGINEERING,
SCIENCE, AND
TECHNOLOGY, INC.

1420 VALWOOD PARKWAY
SUITE 170
CARROLLTON, TEXAS 75006
(972) 484-1420

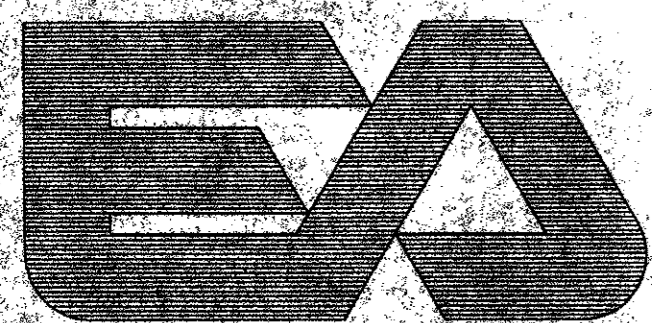
ADDISON AIRPORT
FUEL FARM
ADDISON, TEXAS

DETAIL DRAWINGS

PROJECT NUMBER 13457.01
SCALE
FILE NAME DETAILS
DRAWING NUMBER
SHEET NUMBER

PLANS FOR ADDISON AIRPORT FUEL FARM SPILL CONTAINMENT PADS ADDISON, TEXAS

PREPARED BY

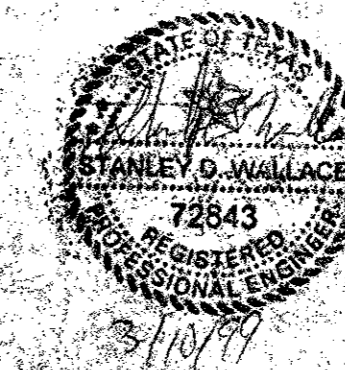


EA ENGINEERING,
SCIENCE, AND
TECHNOLOGY, INC.

1420 VALWOOD PARKWAY
SUITE 170
CARROLLTON, TEXAS 75006
(972) 484-1420

ALASKA	MARYLAND
CALIFORNIA	MASSACHUSETTS
COLORADO	NEBRASKA
DELAWARE	NEW JERSEY
FLORIDA	NEW YORK
GEORGIA	NORTH CAROLINA
HAWAII	TEXAS
ILLINOIS	WASHINGTON

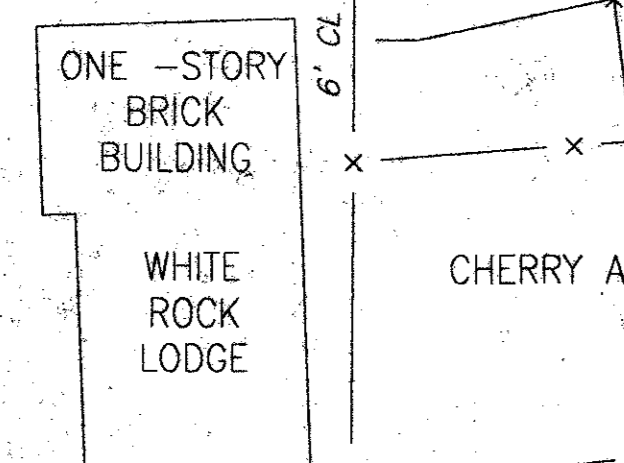
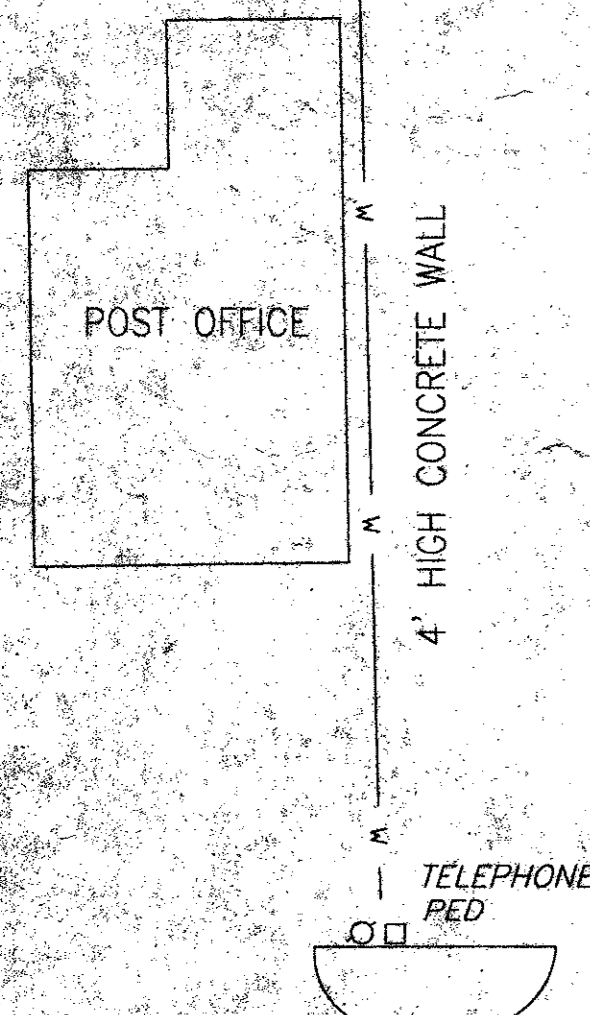
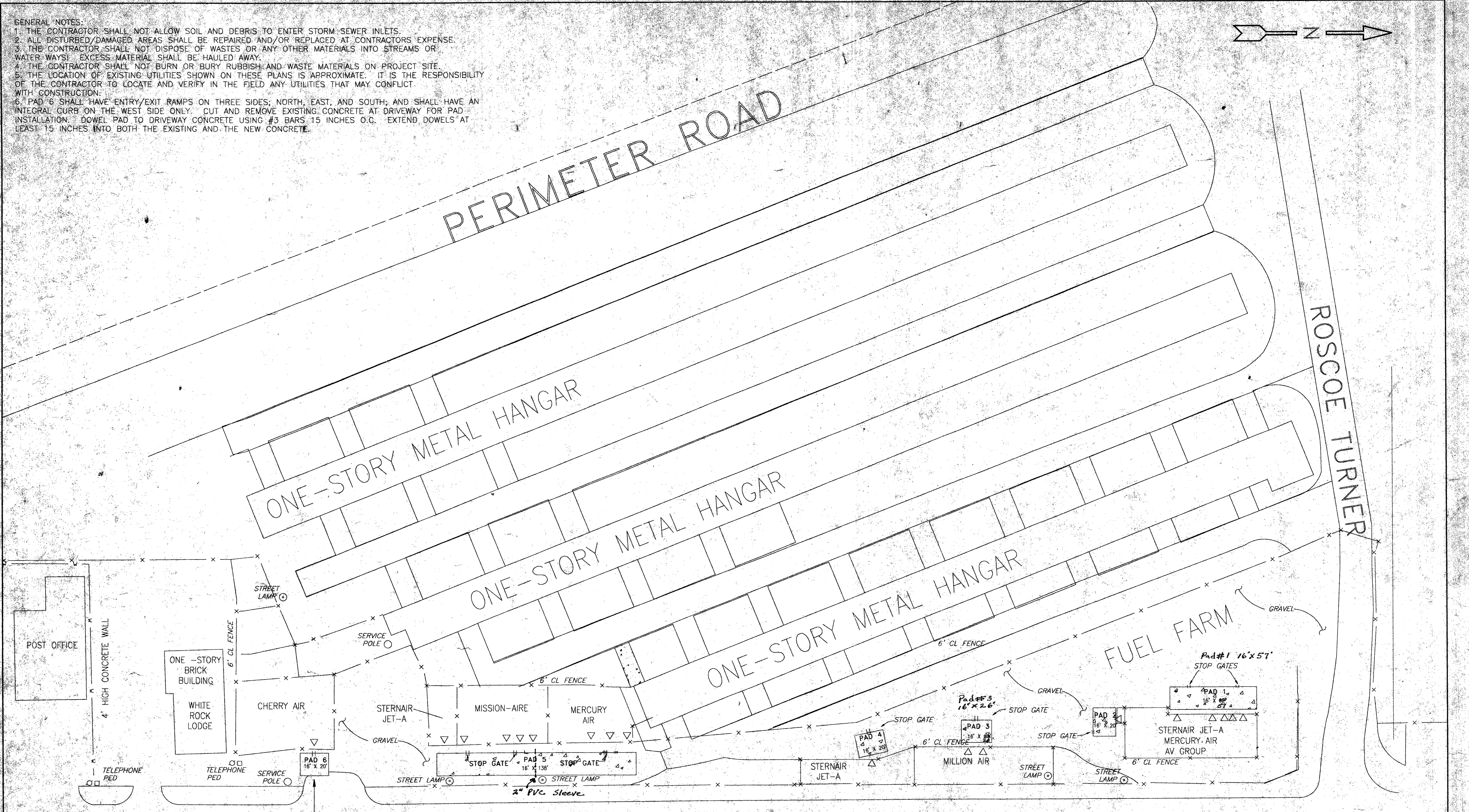
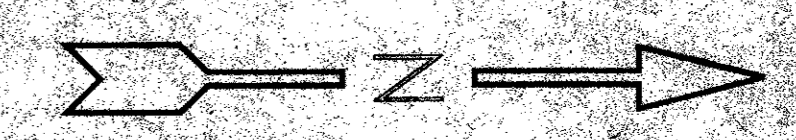
NO.	DESCRIPTION
1	TITLE SHEET
2	SPILL CONTAINMENT PADS
3	DETAILS



CONSTRUCTION SET
ISSUED BY
TOWN OF ADDISON
PUBLIC WORKS DEPARTMENT

As Built Submitted By
Riverway Contractors
Dick Hightower
5-31-00

- GENERAL NOTES:
1. THE CONTRACTOR SHALL NOT ALLOW SOIL AND DEBRIS TO ENTER STORM SEWER INLETS.
 2. ALL DISTURBED/DAMAGED AREAS SHALL BE REPAIRED AND/OR REPLACED AT CONTRACTORS EXPENSE.
 3. THE CONTRACTOR SHALL NOT DISPOSE OF WASTES OR ANY OTHER MATERIALS INTO STREAMS OR WATERWAYS. EXCESS MATERIAL SHALL BE HAULED AWAY.
 4. THE CONTRACTOR SHALL NOT BURN OR BURY RUBBISH AND WASTE MATERIALS ON PROJECT SITE.
 5. THE LOCATION OF EXISTING UTILITIES SHOWN ON THESE PLANS IS APPROXIMATE. IT IS THE RESPONSIBILITY OF THE CONTRACTOR TO LOCATE AND VERIFY IN THE FIELD ANY UTILITIES THAT MAY CONFLICT WITH CONSTRUCTION.
 6. PAD 6 SHALL HAVE ENTRY/EXIT RAMPS ON THREE SIDES, NORTH, EAST, AND SOUTH; AND SHALL HAVE AN INTEGRAL CURB ON THE WEST SIDE ONLY. CUT AND REMOVE EXISTING CONCRETE AT DRIVEWAY FOR PAD INSTALLATION. DOWEL PAD TO DRIVEWAY CONCRETE USING #3 BARS 15 INCHES O.C. EXTEND DOWELS AT LEAST 15 INCHES INTO BOTH THE EXISTING AND THE NEW CONCRETE.

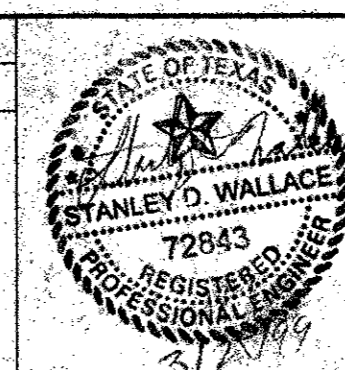


SEE NOTE 6

LEGEND	
-x-	CHAIN LINK FENCE
-w-	CONCRETE WALL
	STOP GATE
▽	FUEL LOAD/OFF LOADING POINTS

ADDISON ROAD

REVISIONS			
NO.	DATE	BY	DESCRIPTION



DATE: 02-26-99
 DESIGNED BY: [Signature]
 DRAWN BY: DED
 CHECKED BY: SW
 PROJECT MANAGER: SW

ADDISON AIRPORT
 FUEL FARM
 ADDISON, TEXAS

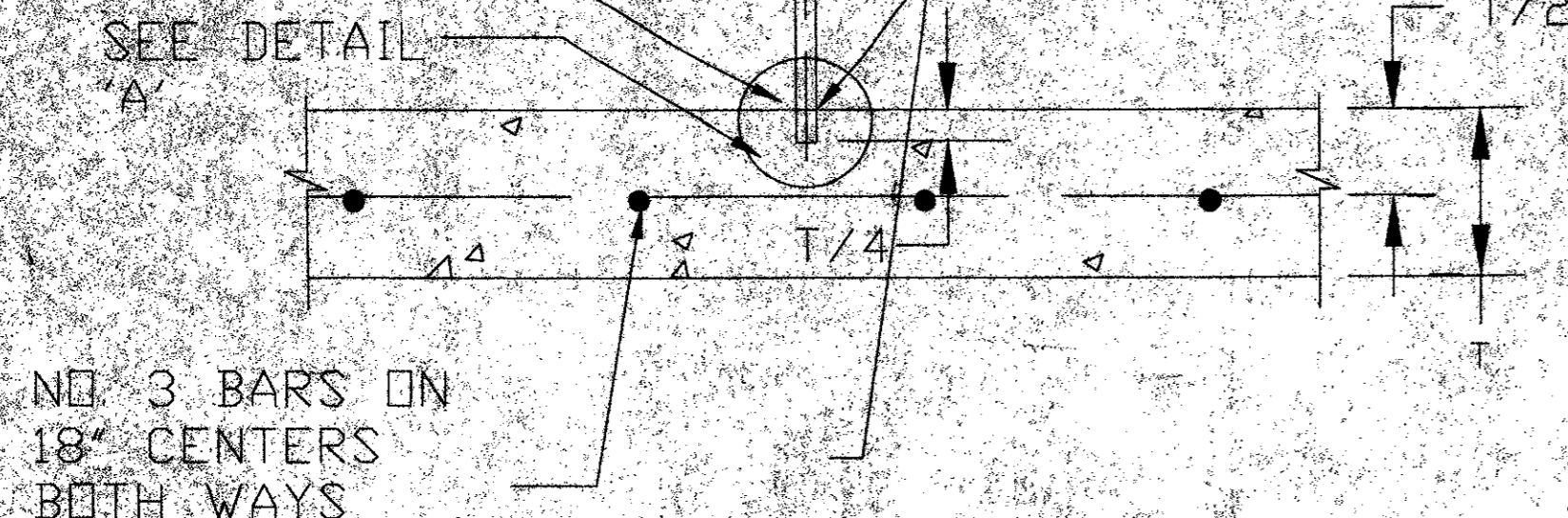
SPILL CONTAINMENT PADS

EA ENGINEERING, SCIENCE, AND TECHNOLOGY, INC.
 1420 VALWOOD PARKWAY
 SUITE 170
 CARROLLTON, TEXAS 75006
 (972) 484-1420

PROJECT NUMBER	13457.01
SCALE	1" = 30'
FILE NAME	D_SIZE
DRAWING NUMBER	-
SHEET NUMBER	-

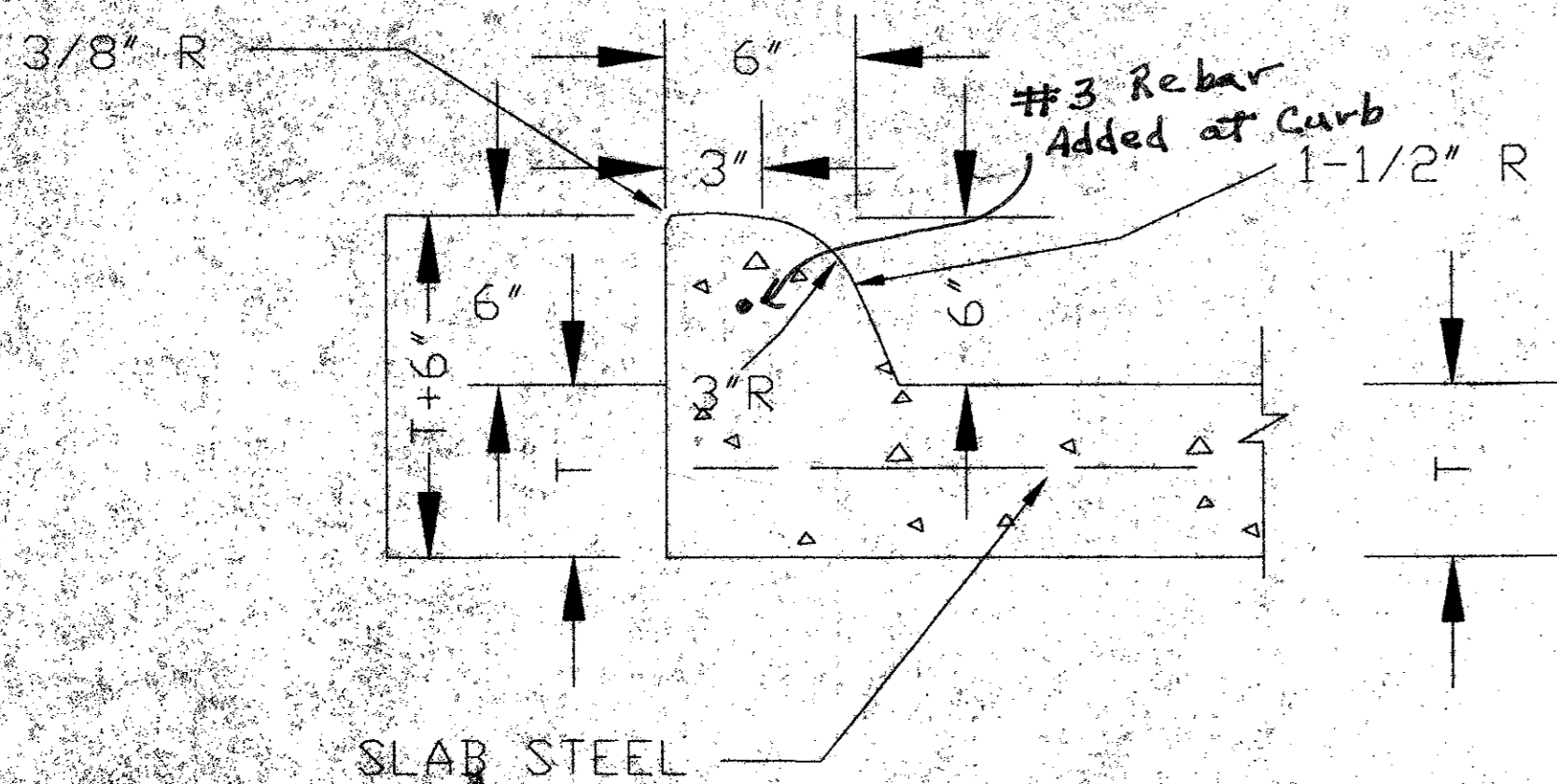
FILLED JOINTS WITH
SOF-SEAL LOW
MODULUS SEALANT OR
APPROVED EQUAL

Sonomec #1

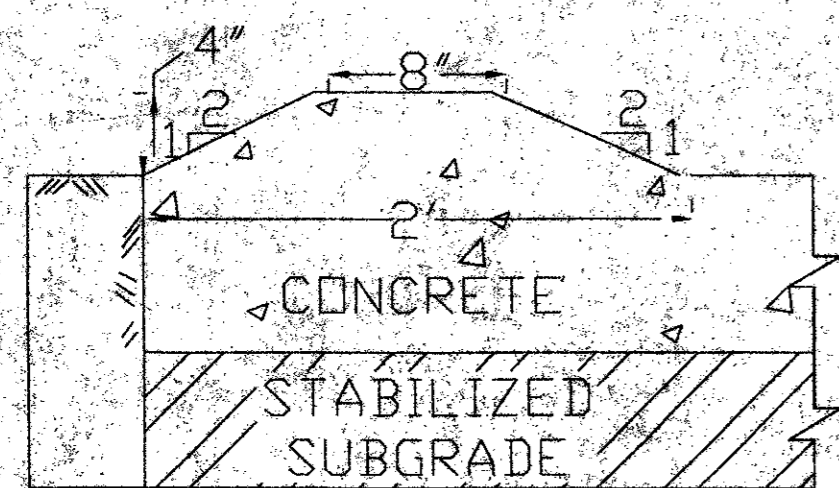


SAWED DUMMY JOINT

ALL JOINTS IN CONCRETE SHALL NOT EXCEED 15 FEET

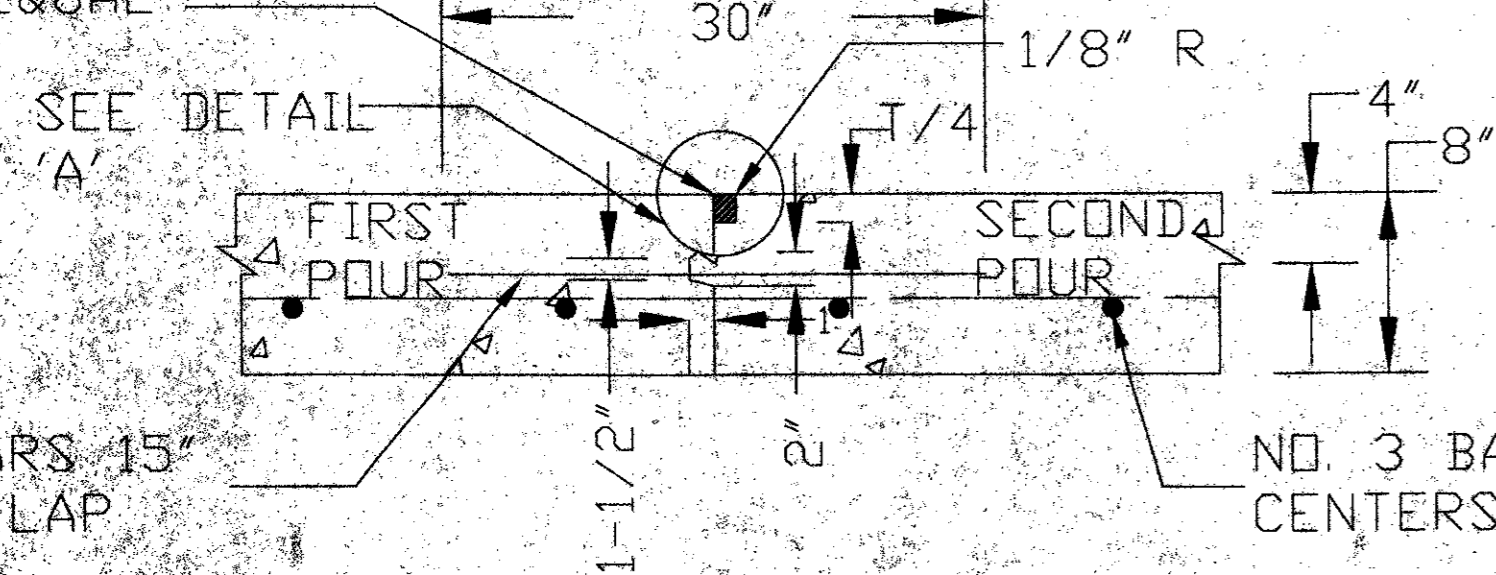


INTEGRAL CURB DETAIL



ENTRY/EXIT RAMP DETAIL

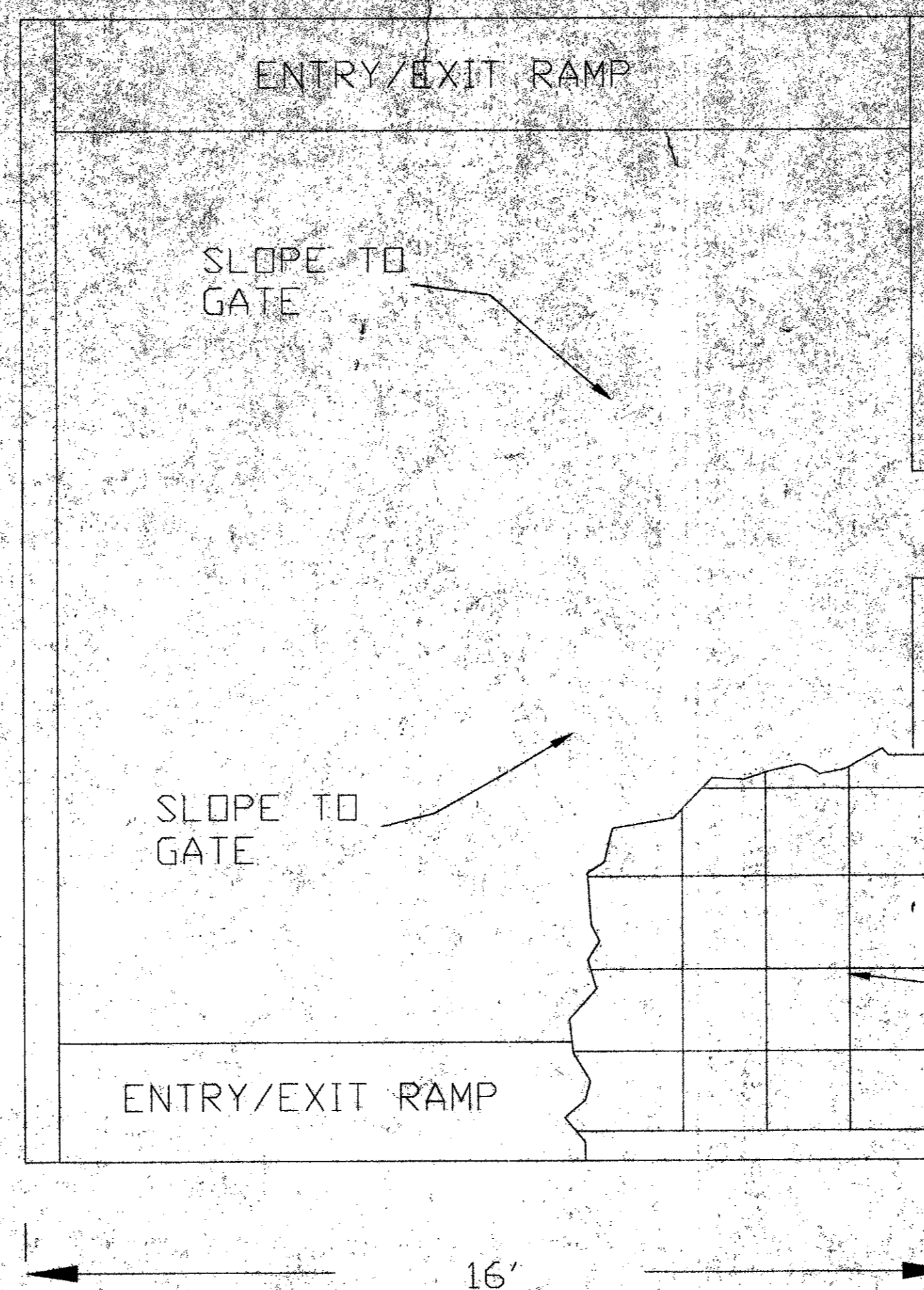
1/2" TOOLED JOINT
FILLED WITH
SOF-SEAL LOW
MODULUS SEALANT OR
APPROVED EQUAL



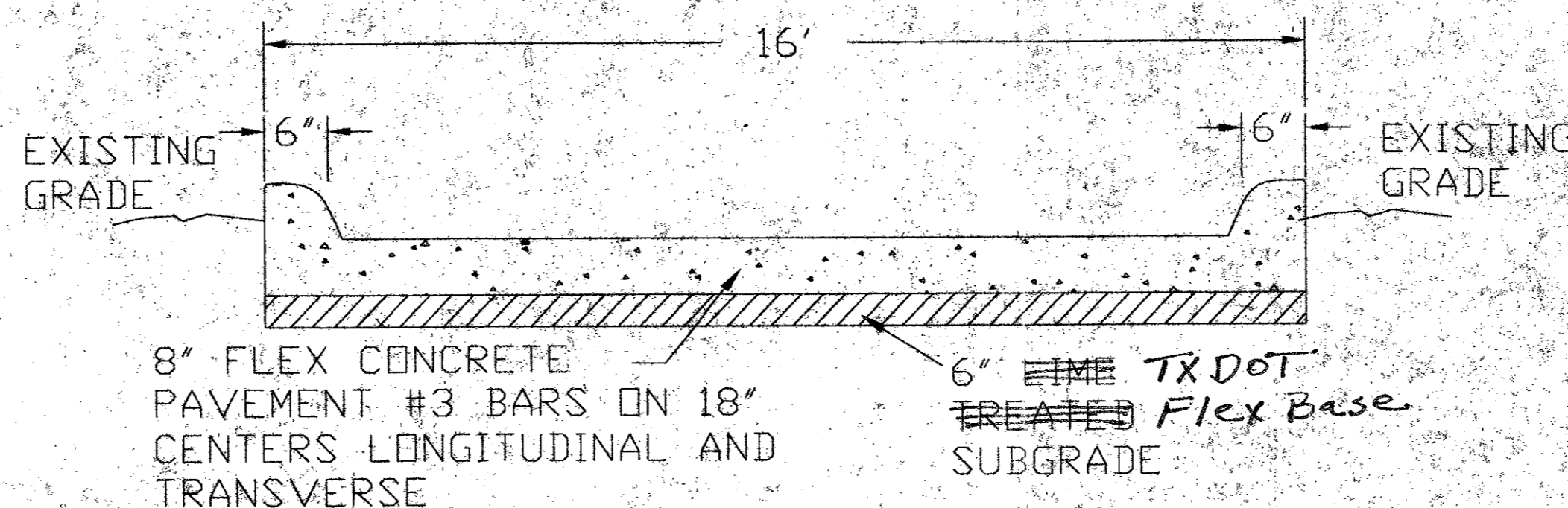
CONSTRUCTION JOINT

1. DOWEL BARS SHALL BE DRILLED INTO PAVEMENT HORIZONTALLY BY USE OF A MECHANICAL RIG.
2. DRILLING BY HAND IS NOT ACCEPTABLE! PUSHING DOWEL BARS INTO GREEN CONCRETE IS NOT ACCEPTABLE.

LENGTH VARIES
BETWEEN 20FT
AND 138FT.
(SEE SHEET 1)

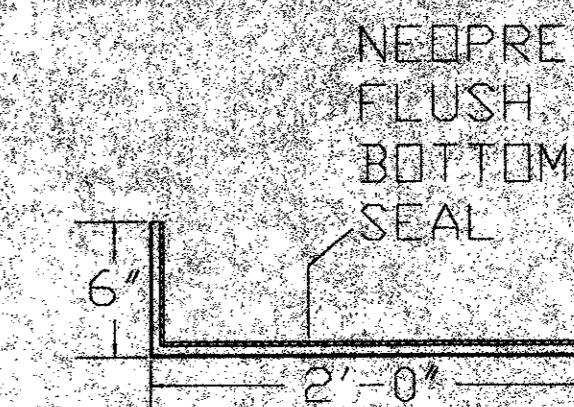


TYPICAL FUEL CONTAINMENT SLAB



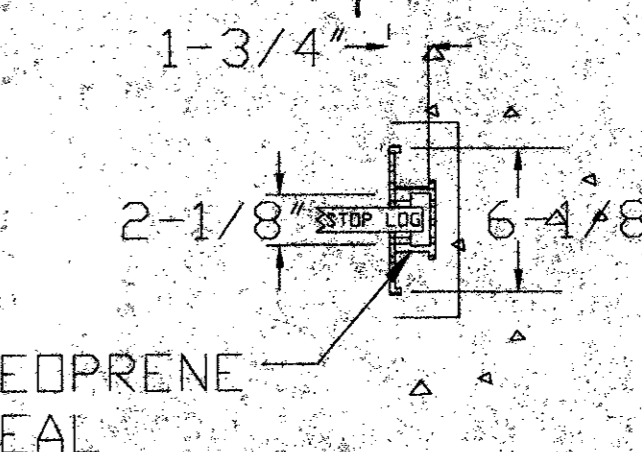
TYPICAL SECTION

1. CONCRETE SHALL BE CLASS P, TXDOT ITEM 421
2. SUBGRADE SHALL BE STABILIZED WITH 6% HYDRATED LIME (BY DRY WEIGHT), APPROXIMATELY 27lbs PER SQ. YARD) PER TXDOT ITEM 260, COMPACTED TO NOT LESS THAN 95% OF THE STANDARD, PROCTOR MAXIMUM DRY DENSITY (ASTM D 698) WITHIN THE RANGE 0 TO 4 PERCENTAGE POINTS ABOVE THE MIXTURES OPTIMUM MOISTURE CONTENT.

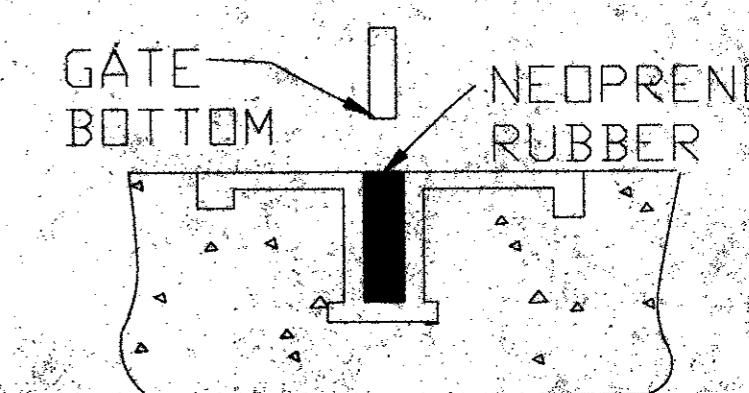


FRP GUIDE FRAME

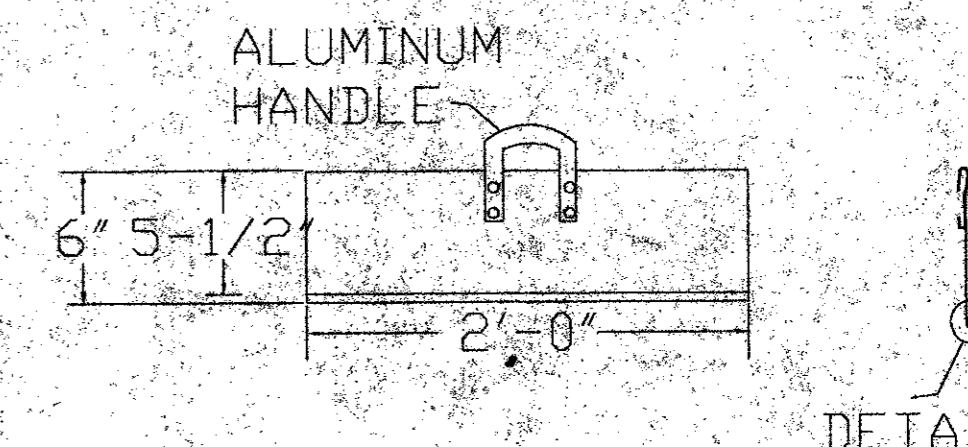
24" WIDE BY 6" FRP STOP GATE AND FRP EMBEDDED GUIDE FRAME AS MANUFACTURED BY PLASTI-FAB, INC. TUALATIN, OREGON OR EQUIVALENT



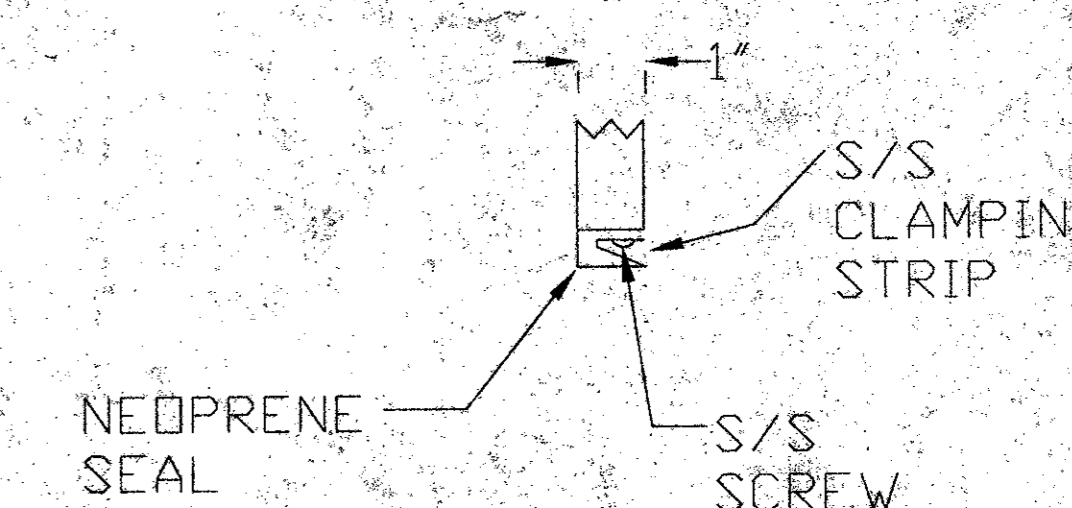
SIDE GUIDE SECTION



FLUSH BOTTOM SIDE SEAL

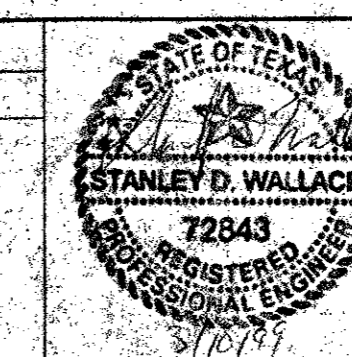


GATE



GATE BOTTOM DETAIL

REVISIONS			
NO.	DATE	BY	DESCRIPTION



DATE 02-26-99
DESIGNED BY
DRAWN BY DED
CHECKED BY SW
PROJECT MANAGER SW



EA ENGINEERING, SCIENCE, AND TECHNOLOGY, INC.

1420 WALWOOD PARKWAY
SUITE 170
CARROLLTON, TEXAS 75006
(972) 484-1420

ADDISON AIRPORT
FUEL FARM
ADDISON, TEXAS

DETAIL DRAWINGS

PROJECT NUMBER 13457.01
SCALE
FILE NAME DETAILS
DRAWING NUMBER
SHEET NUMBER