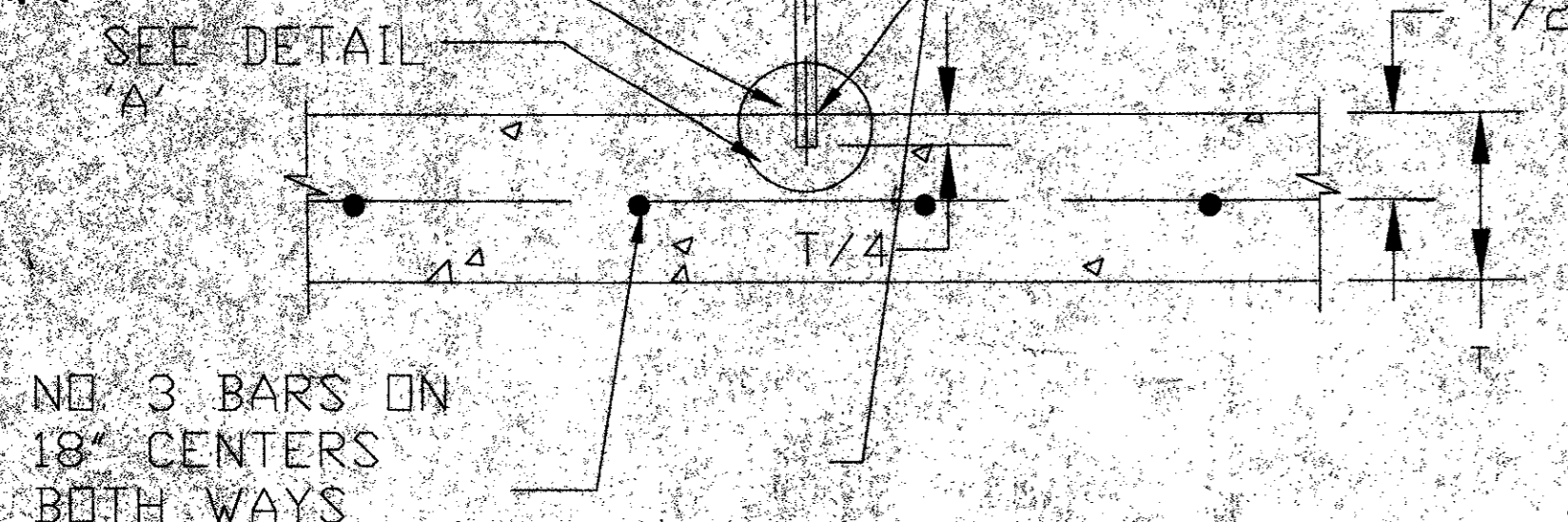


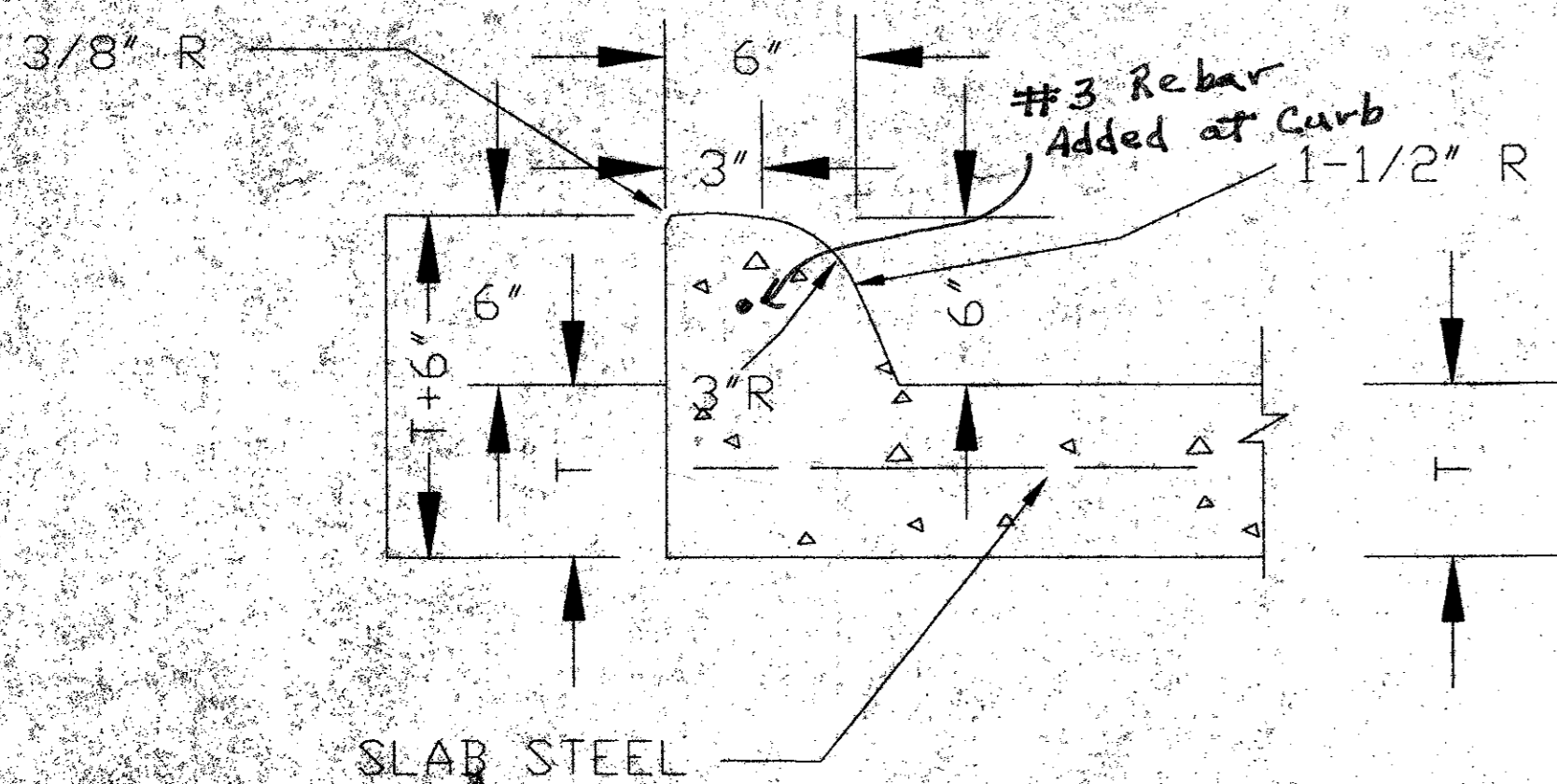
FILLED JOINTS WITH  
SOF-SEAL LOW  
MODULUS SEALANT OR  
APPROVED EQUAL

Sonomec #1

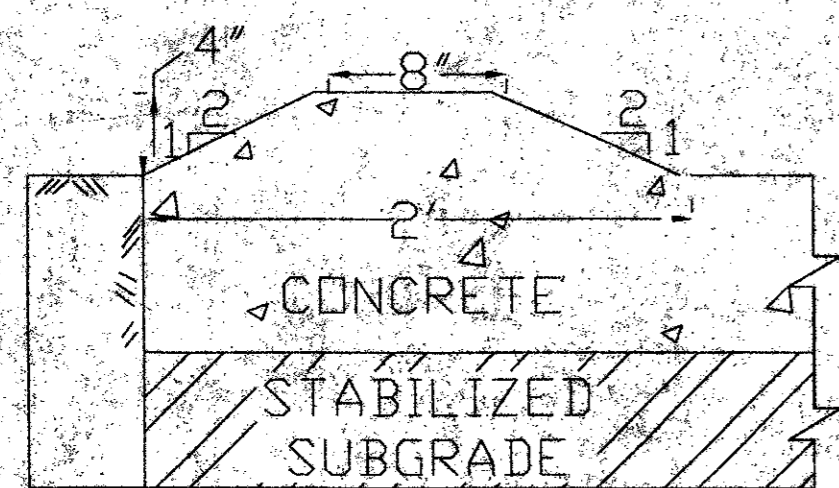


SAWED DUMMY JOINT

ALL JOINTS IN CONCRETE SHALL NOT EXCEED 15 FEET

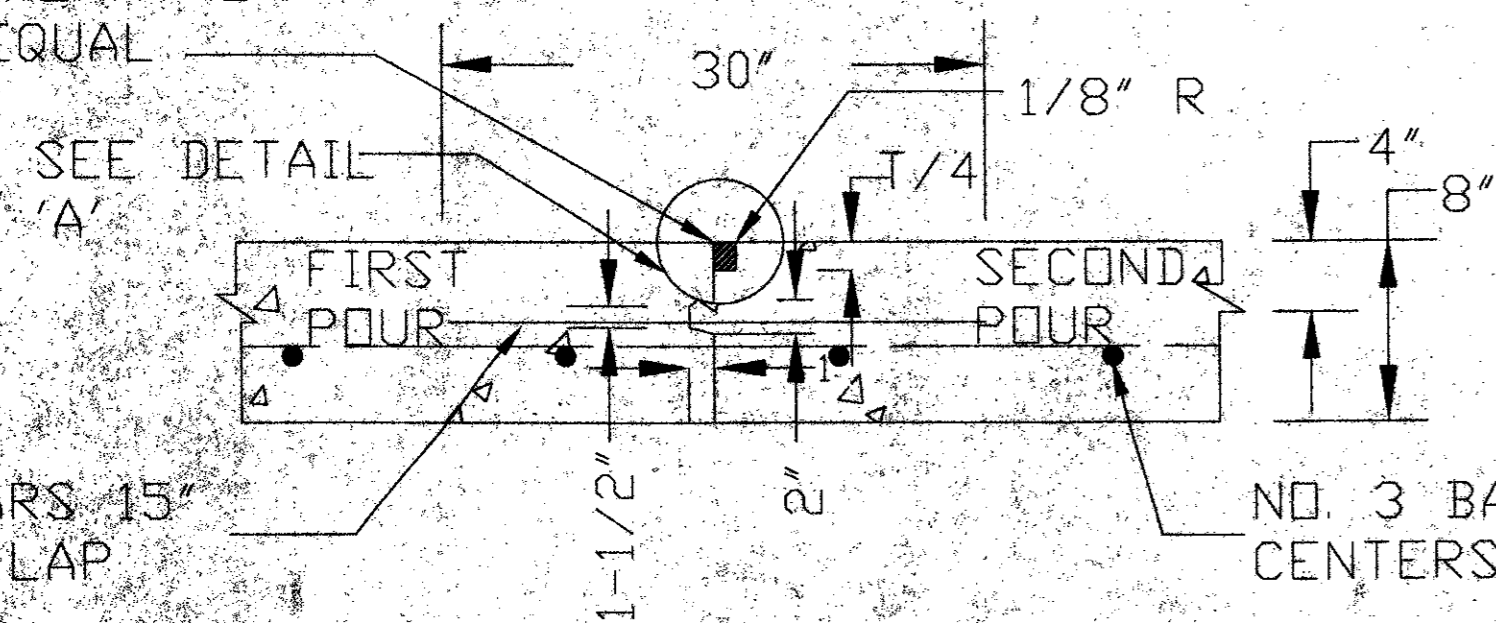


INTEGRAL CURB DETAIL



ENTRY/EXIT RAMP DETAIL

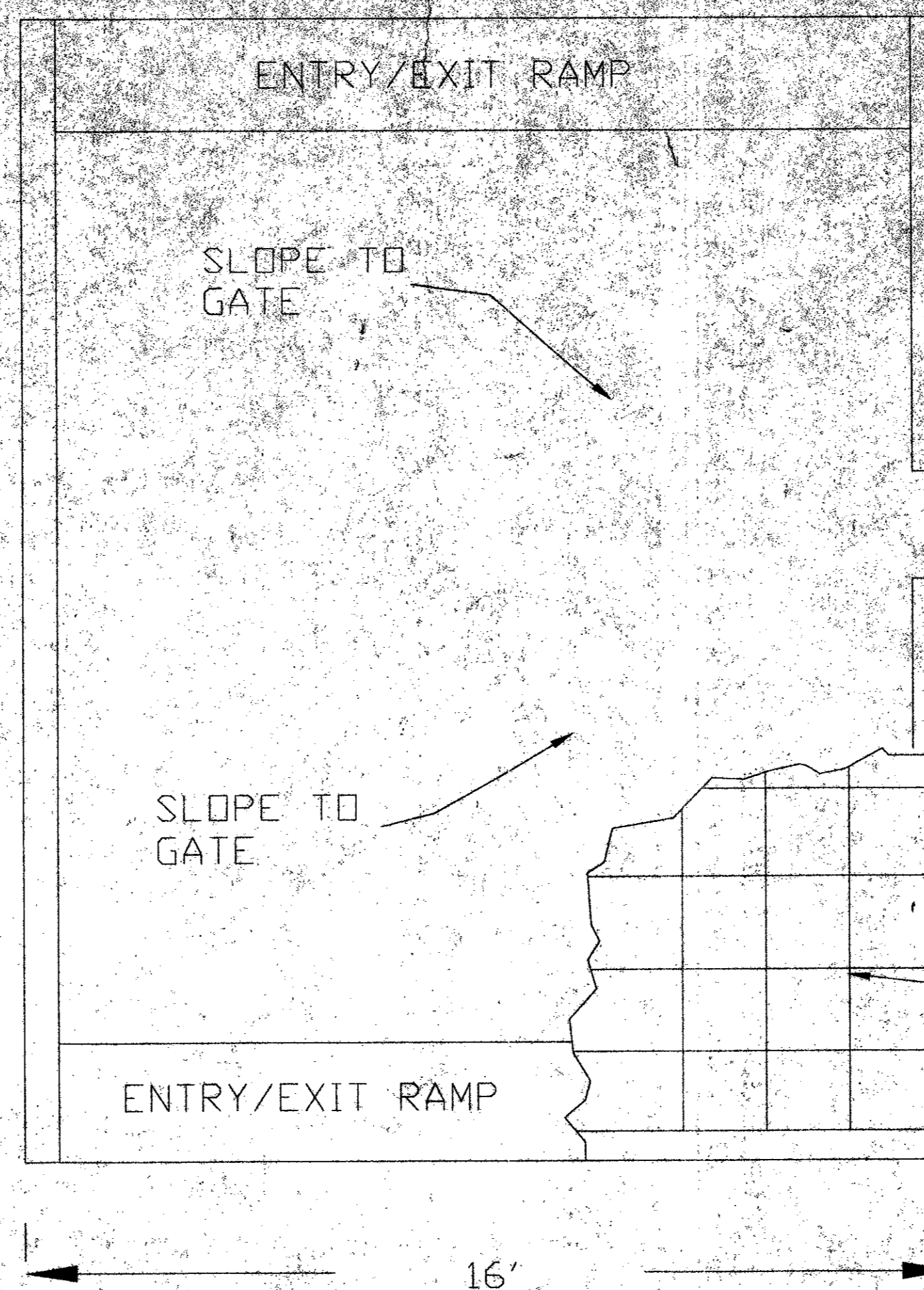
1/2" TOOLED JOINT  
FILLED WITH  
SOF-SEAL LOW  
MODULUS SEALANT OR  
APPROVED EQUAL



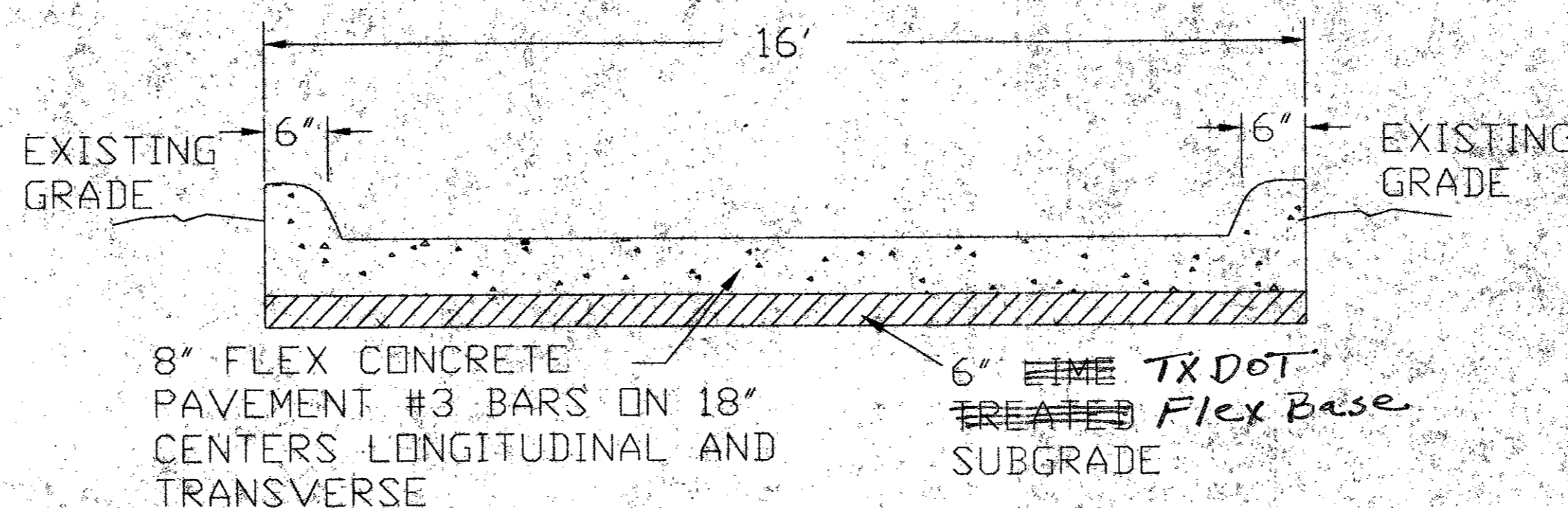
CONSTRUCTION JOINT

1. DOWEL BARS SHALL BE DRILLED INTO PAVEMENT HORIZONTALLY BY USE OF A MECHANICAL RIG.
2. DRILLING BY HAND IS NOT ACCEPTABLE! PUSHING DOWEL BARS INTO GREEN CONCRETE IS NOT ACCEPTABLE.

LENGTH VARIES  
BETWEEN 20FT  
AND 138FT.  
(SEE SHEET 1)

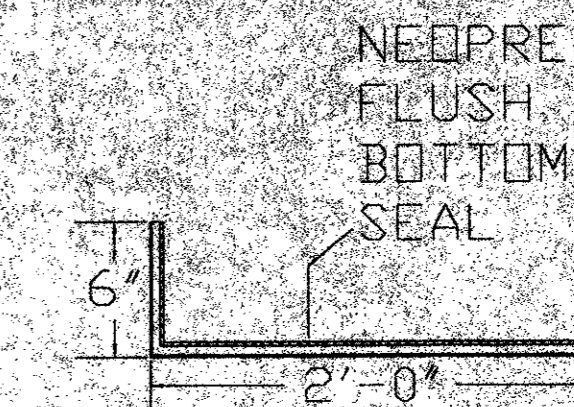


TYPICAL FUEL CONTAINMENT SLAB



TYPICAL SECTION

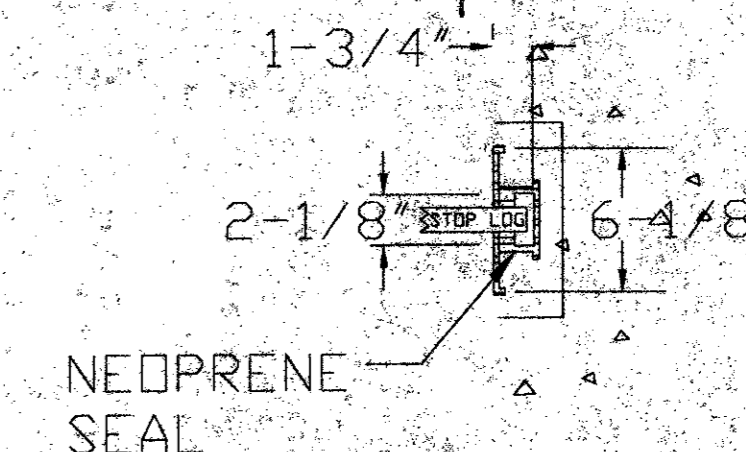
1. CONCRETE SHALL BE CLASS P, TXDOT ITEM 421
2. SUBGRADE SHALL BE STABILIZED WITH 6% HYDRATED LIME (BY DRY WEIGHT), APPROXIMATELY 27lbs PER SQ. YARD) PER TXDOT ITEM 260, COMPACTED TO NOT LESS THAN 95% OF THE STANDARD, PROCTOR MAXIMUM DRY DENSITY (ASTM D 698) WITHIN THE RANGE 0 TO 4 PERCENTAGE POINTS ABOVE THE MIXTURES OPTIMUM MOISTURE CONTENT.



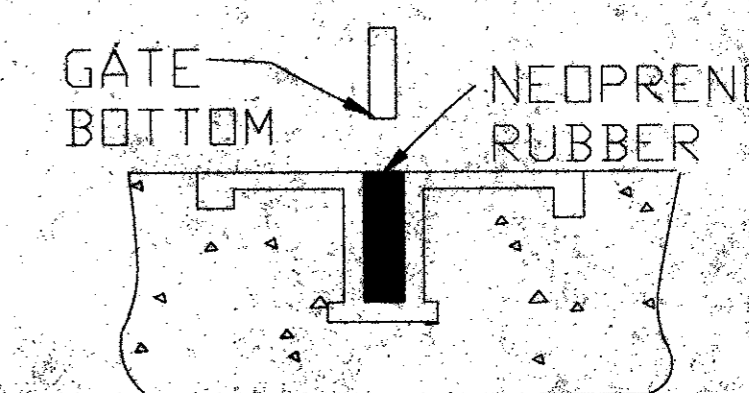
FRP GUIDE FRAME

24" WIDE BY 6" FRP STOP GATE AND FRP EMBEDDED GUIDE FRAME AS MANUFACTURED BY PLASTI-FAB, INC. TUALATIN, OREGON OR EQUIVALENT

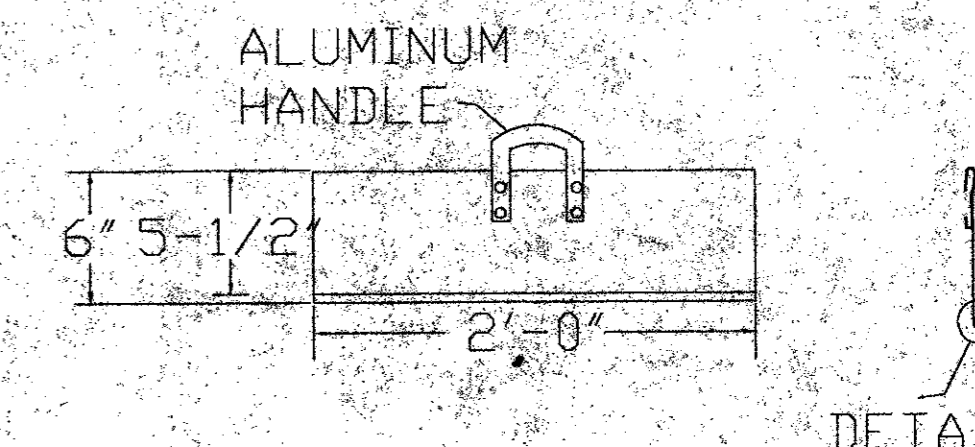
See Submittals



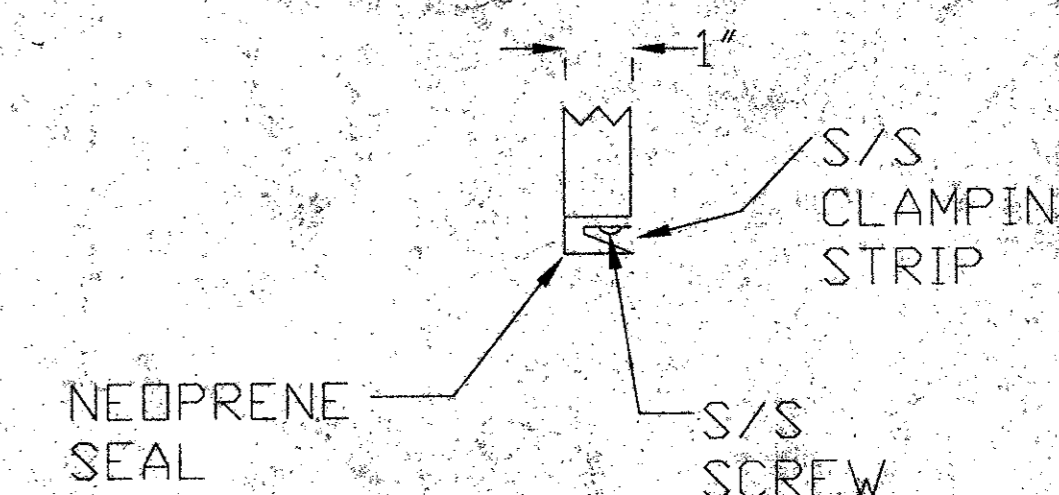
SIDE GUIDE SECTION



FLUSH BOTTOM SIDE SEAL

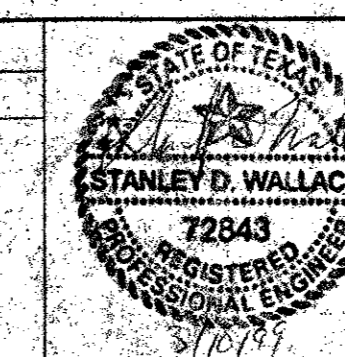


GATE



GATE BOTTOM DETAIL

| REVISIONS |      |    |             |
|-----------|------|----|-------------|
| NO.       | DATE | BY | DESCRIPTION |
|           |      |    |             |
|           |      |    |             |
|           |      |    |             |



DATE 02-26-99  
DESIGNED BY  
DRAWN BY DED  
CHECKED BY SW  
PROJECT MANAGER SW



EA ENGINEERING, SCIENCE, AND TECHNOLOGY, INC.

1420 WALWOOD PARKWAY  
SUITE 170  
CARROLLTON, TEXAS 75006  
(972) 484-1420

ADDISON AIRPORT  
FUEL FARM  
ADDISON, TEXAS

DETAIL DRAWINGS

PROJECT NUMBER 13457.01  
SCALE  
FILE NAME DETAILS  
DRAWING NUMBER  
SHEET NUMBER