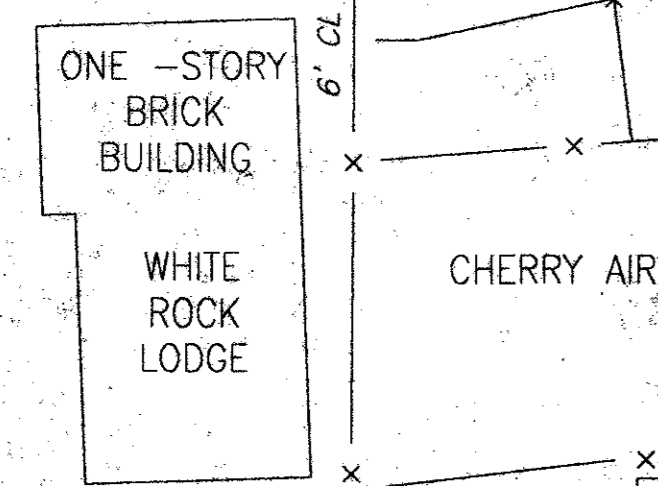
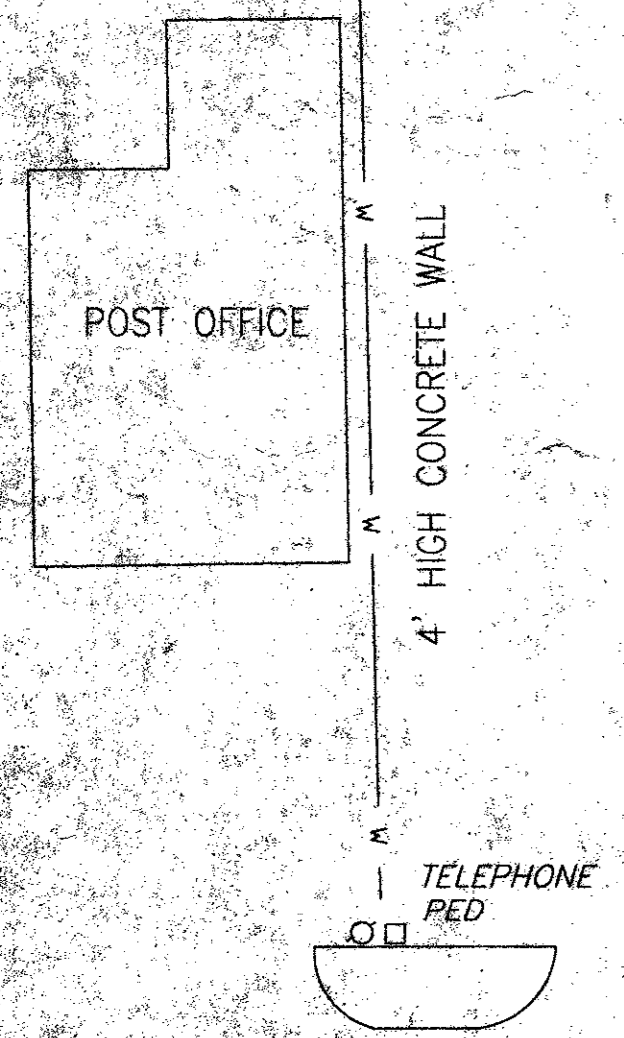
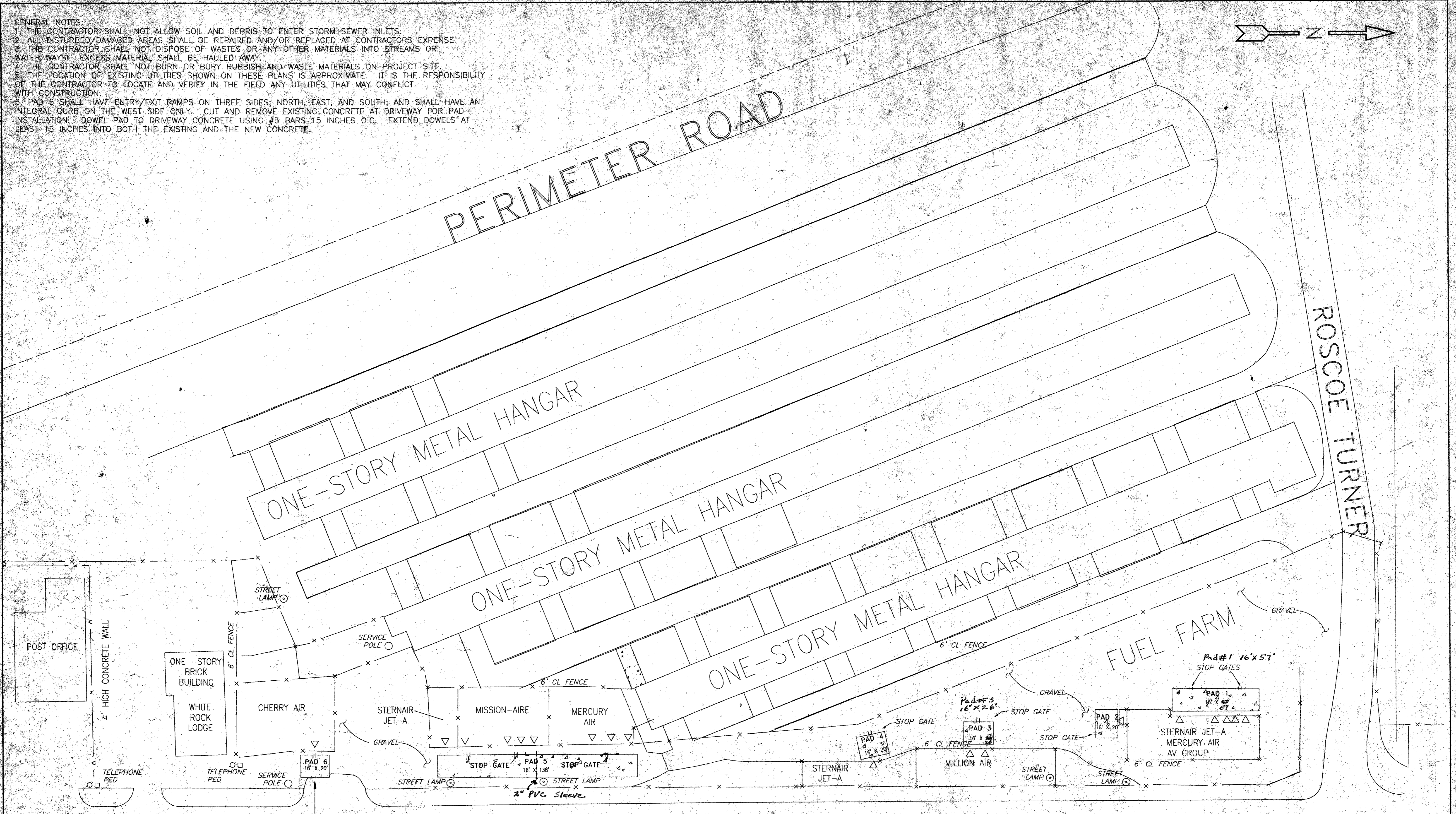
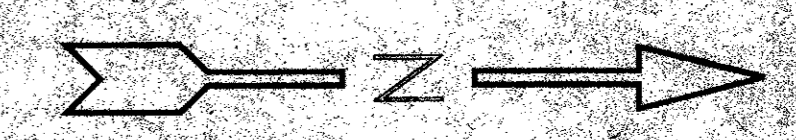


- GENERAL NOTES:
1. THE CONTRACTOR SHALL NOT ALLOW SOIL AND DEBRIS TO ENTER STORM SEWER INLETS.
 2. ALL DISTURBED/DAMAGED AREAS SHALL BE REPAIRED AND/OR REPLACED AT CONTRACTORS EXPENSE.
 3. THE CONTRACTOR SHALL NOT DISPOSE OF WASTES OR ANY OTHER MATERIALS INTO STREAMS OR WATERWAYS. EXCESS MATERIAL SHALL BE HAULED AWAY.
 4. THE CONTRACTOR SHALL NOT BURN OR BURY RUBBISH AND WASTE MATERIALS ON PROJECT SITE.
 5. THE LOCATION OF EXISTING UTILITIES SHOWN ON THESE PLANS IS APPROXIMATE. IT IS THE RESPONSIBILITY OF THE CONTRACTOR TO LOCATE AND VERIFY IN THE FIELD ANY UTILITIES THAT MAY CONFLICT WITH CONSTRUCTION.
 6. PAD 6 SHALL HAVE ENTRY/EXIT RAMPS ON THREE SIDES, NORTH, EAST, AND SOUTH; AND SHALL HAVE AN INTEGRAL CURB ON THE WEST SIDE ONLY. CUT AND REMOVE EXISTING CONCRETE AT DRIVEWAY FOR PAD INSTALLATION. DOWEL PAD TO DRIVEWAY CONCRETE USING #3 BARS 15 INCHES O.C. EXTEND DOWELS AT LEAST 15 INCHES INTO BOTH THE EXISTING AND THE NEW CONCRETE.



SEE NOTE 6

LEGEND	
-x-	CHAIN LINK FENCE
-w-	CONCRETE WALL
	STOP GATE
▽	FUEL LOAD/OFF LOADING POINTS

ADDISON ROAD

REVISIONS			
NO.	DATE	BY	DESCRIPTION

DATE: 02-26-99
 DESIGNED BY: [Signature]
 DRAWN BY: DED
 CHECKED BY: SW
 PROJECT MANAGER: SW

ADDISON AIRPORT
 FUEL FARM
 ADDISON, TEXAS

SPILL CONTAINMENT PADS

EA ENGINEERING, SCIENCE, AND TECHNOLOGY, INC.
 1420 VALWOOD PARKWAY
 SUITE 170
 CARROLLTON, TEXAS 75006
 (972) 484-1420

PROJECT NUMBER	13457.01
SCALE	1" = 30'
FILE NAME	D_SIZE
DRAWING NUMBER	-
SHEET NUMBER	-