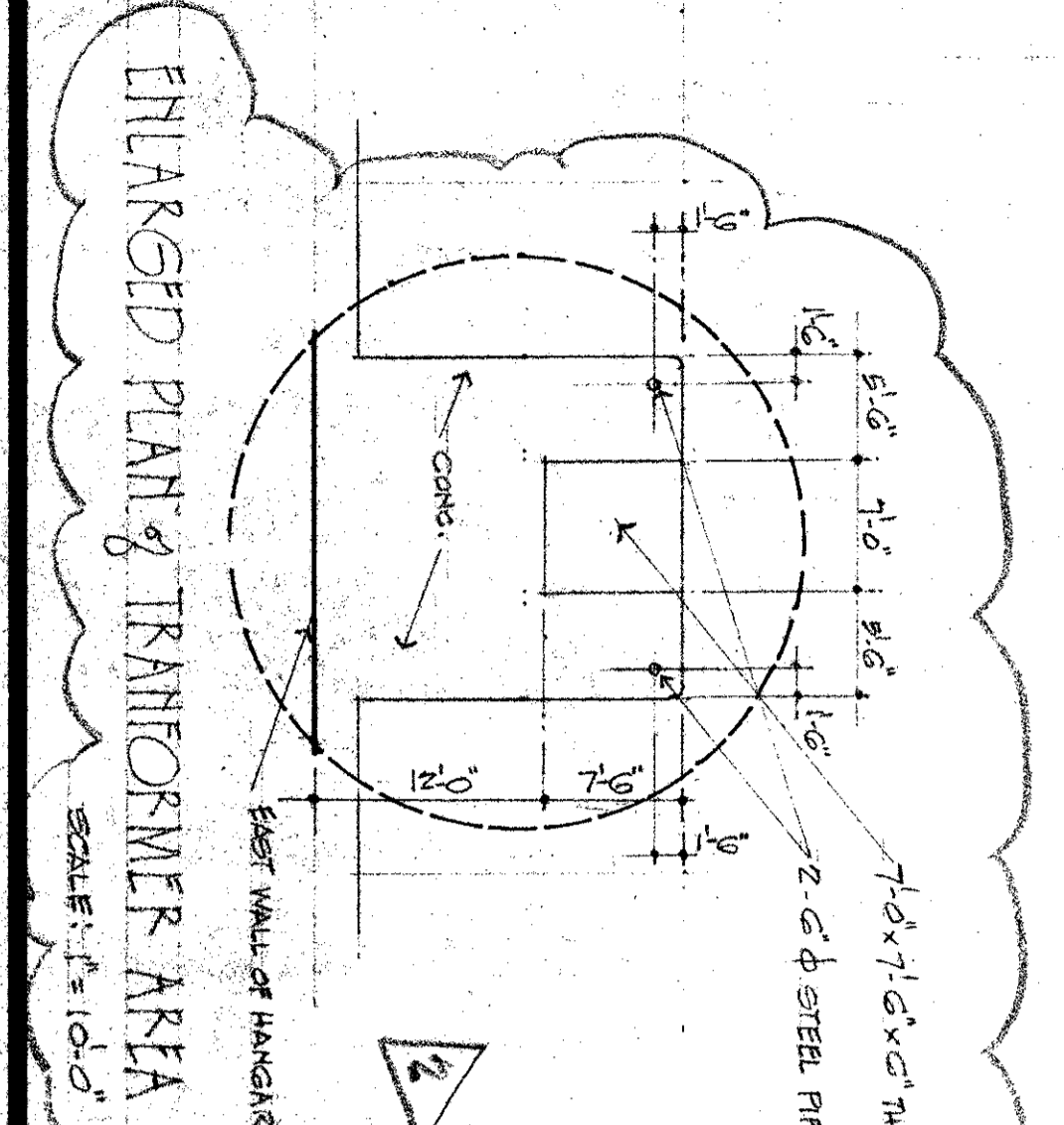
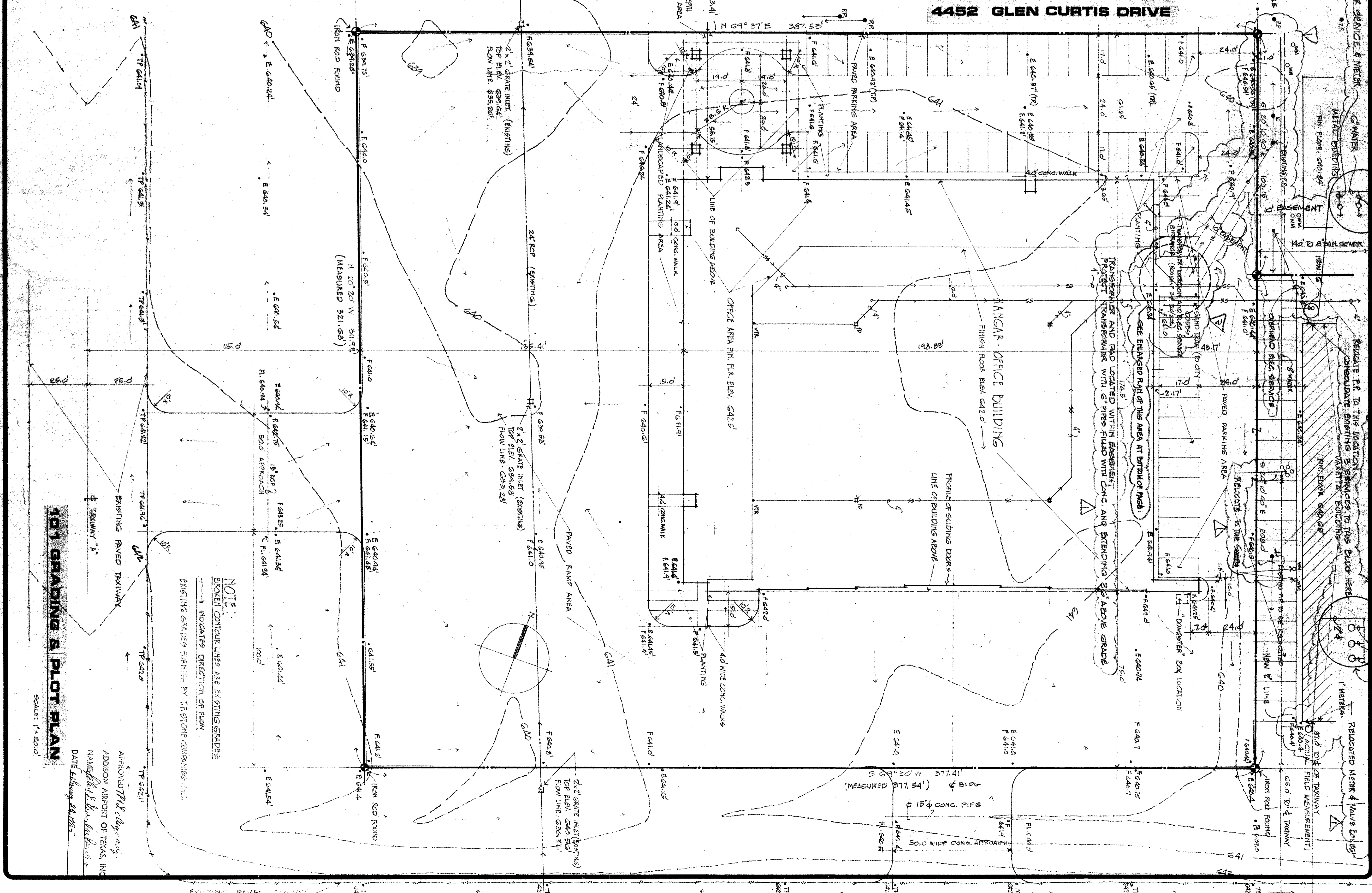


NOTES
 ALL ABOVE DETAILS SCALE: 1/4"=1'-0"
 ALL CONC. SLABS REINFORCED WITH #3 @ 12" O.C. BOTHWAYS



DOOR SCHEDULE	REMARKS
1	3'-0" x 7'-0" x 1 1/2"
2	3'-0" x 7'-0" x 1 1/2"
3	3'-0" x 7'-0" x 1 1/2"
4	3'-0" x 7'-0" x 1 1/2"
5	3'-0" x 7'-0" x 1 1/2"
6	3'-0" x 7'-0" x 1 1/2"
7	3'-0" x 7'-0" x 1 1/2"
8	3'-0" x 7'-0" x 1 1/2"
9	3'-0" x 7'-0" x 1 1/2"
10	3'-0" x 7'-0" x 1 1/2"
11	3'-0" x 7'-0" x 1 1/2"
12	3'-0" x 7'-0" x 1 1/2"
13	3'-0" x 7'-0" x 1 1/2"
14	3'-0" x 7'-0" x 1 1/2"
15	3'-0" x 7'-0" x 1 1/2"
16	3'-0" x 7'-0" x 1 1/2"
17	3'-0" x 7'-0" x 1 1/2"
18	3'-0" x 7'-0" x 1 1/2"
19	3'-0" x 7'-0" x 1 1/2"
20	3'-0" x 7'-0" x 1 1/2"
21	3'-0" x 7'-0" x 1 1/2"
22	3'-0" x 7'-0" x 1 1/2"
23	3'-0" x 7'-0" x 1 1/2"
24	3'-0" x 7'-0" x 1 1/2"
25	3'-0" x 7'-0" x 1 1/2"
26	3'-0" x 7'-0" x 1 1/2"
27	3'-0" x 7'-0" x 1 1/2"
28	3'-0" x 7'-0" x 1 1/2"
29	3'-0" x 7'-0" x 1 1/2"
30	3'-0" x 7'-0" x 1 1/2"
31	3'-0" x 7'-0" x 1 1/2"
32	3'-0" x 7'-0" x 1 1/2"
33	3'-0" x 7'-0" x 1 1/2"
34	3'-0" x 7'-0" x 1 1/2"
35	3'-0" x 7'-0" x 1 1/2"
36	3'-0" x 7'-0" x 1 1/2"
37	3'-0" x 7'-0" x 1 1/2"
38	3'-0" x 7'-0" x 1 1/2"
39	3'-0" x 7'-0" x 1 1/2"
40	3'-0" x 7'-0" x 1 1/2"
41	3'-0" x 7'-0" x 1 1/2"
42	3'-0" x 7'-0" x 1 1/2"
43	3'-0" x 7'-0" x 1 1/2"
44	3'-0" x 7'-0" x 1 1/2"
45	3'-0" x 7'-0" x 1 1/2"
46	3'-0" x 7'-0" x 1 1/2"
47	3'-0" x 7'-0" x 1 1/2"
48	3'-0" x 7'-0" x 1 1/2"
49	3'-0" x 7'-0" x 1 1/2"
50	3'-0" x 7'-0" x 1 1/2"
51	3'-0" x 7'-0" x 1 1/2"
52	3'-0" x 7'-0" x 1 1/2"
53	3'-0" x 7'-0" x 1 1/2"
54	3'-0" x 7'-0" x 1 1/2"
55	3'-0" x 7'-0" x 1 1/2"
56	3'-0" x 7'-0" x 1 1/2"
57	3'-0" x 7'-0" x 1 1/2"
58	3'-0" x 7'-0" x 1 1/2"
59	3'-0" x 7'-0" x 1 1/2"
60	3'-0" x 7'-0" x 1 1/2"
61	3'-0" x 7'-0" x 1 1/2"
62	3'-0" x 7'-0" x 1 1/2"
63	3'-0" x 7'-0" x 1 1/2"
64	3'-0" x 7'-0" x 1 1/2"
65	3'-0" x 7'-0" x 1 1/2"
66	3'-0" x 7'-0" x 1 1/2"
67	3'-0" x 7'-0" x 1 1/2"
68	3'-0" x 7'-0" x 1 1/2"
69	3'-0" x 7'-0" x 1 1/2"
70	3'-0" x 7'-0" x 1 1/2"
71	3'-0" x 7'-0" x 1 1/2"
72	3'-0" x 7'-0" x 1 1/2"
73	3'-0" x 7'-0" x 1 1/2"
74	3'-0" x 7'-0" x 1 1/2"
75	3'-0" x 7'-0" x 1 1/2"
76	3'-0" x 7'-0" x 1 1/2"
77	3'-0" x 7'-0" x 1 1/2"
78	3'-0" x 7'-0" x 1 1/2"
79	3'-0" x 7'-0" x 1 1/2"
80	3'-0" x 7'-0" x 1 1/2"
81	3'-0" x 7'-0" x 1 1/2"
82	3'-0" x 7'-0" x 1 1/2"
83	3'-0" x 7'-0" x 1 1/2"
84	3'-0" x 7'-0" x 1 1/2"
85	3'-0" x 7'-0" x 1 1/2"
86	3'-0" x 7'-0" x 1 1/2"
87	3'-0" x 7'-0" x 1 1/2"
88	3'-0" x 7'-0" x 1 1/2"
89	3'-0" x 7'-0" x 1 1/2"
90	3'-0" x 7'-0" x 1 1/2"
91	3'-0" x 7'-0" x 1 1/2"
92	3'-0" x 7'-0" x 1 1/2"
93	3'-0" x 7'-0" x 1 1/2"
94	3'-0" x 7'-0" x 1 1/2"
95	3'-0" x 7'-0" x 1 1/2"
96	3'-0" x 7'-0" x 1 1/2"
97	3'-0" x 7'-0" x 1 1/2"
98	3'-0" x 7'-0" x 1 1/2"
99	3'-0" x 7'-0" x 1 1/2"
100	3'-0" x 7'-0" x 1 1/2"



DATE	SCALE	SHEET
8/20/21	AS SHOWN	1

PLOT PLAN & DETAILS
FOR HANGAR-OFFICE BUILDING
ADDISON AIRPORT, ADDISON, TEXAS

STONE
 T.F. Stone Companies, Inc.
 Liberty Plaza I
 6005 Kellen Springs Blvd. Suite 500
 Dallas, Texas 75246

REGISTERED ARCHITECT
STATE OF TEXAS
 REG. NO. 6418

ROGER SMITH AIA
ARCHITECT
 8306 WILEY POST DR.
 CARROLLTON, TEXAS, 75006
 987-4701

PROFESSIONAL SEAL
 REGISTERED ARCHITECT
 STATE OF TEXAS
 AREA 2-21-85