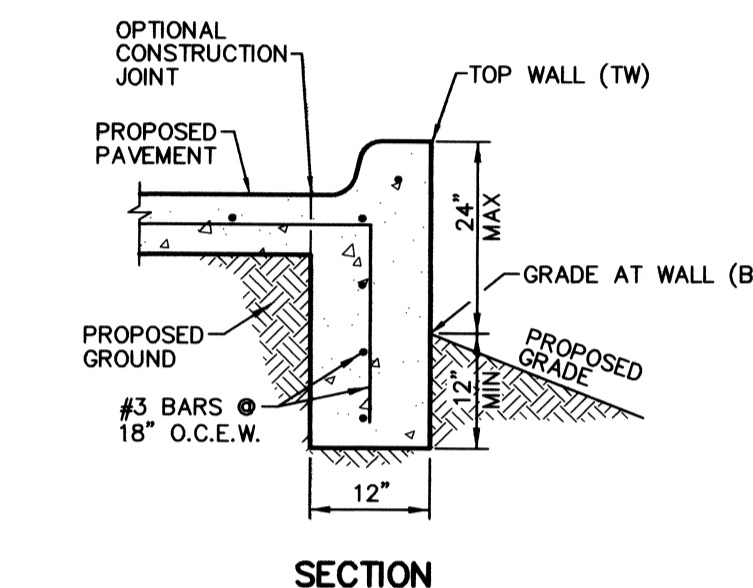


VICINITY MAP (NOT TO SCALE)

LEGEND

- B BOLLARD
- EM ELECTRIC METER
- FP POWER POLE
- LS LIGHT STANDARD
- WM WATER METER
- WV WATER VALVE
- ICV IRRIGATION CONTROL VALVE
- FH FIRE HYDRANT
- CS CLEANOUT
- MH MANHOLE
- TSC TRAFFIC SIGNAL CONTROL
- TSP TRAFFIC SIGNAL POLE
- TELE TELEPHONE BOX
- FL FLOOD LIGHT
- FP FLAG POLE
- SGN TRAFFIC SIGN
- IRS 1/2-INCH IRON ROD
- W/PACHECO KOCH" CAP SET
- (C.M.) CONTROLLING MONUMENT
- PROPERTY LINE
- FENCE
- OHL OVERHEAD UTILITY LINE
- E UNDERGROUND ELECTRIC LINE
- T UNDERGROUND TELEPHONE LINE
- C UNDERGROUND CABLE LINE



SECTION 1 CURB WALL (NOT TO SCALE)

GRADING GENERAL NOTES

1. REFER TO GEOTECHNICAL REPORT FOR REQUIREMENTS REGARDING FILL COMPACTION AND MOISTURE CONTENT.
2. UNLESS NOTED, ALL FILL IS TO BE COMPACTED TO A MINIMUM OF 95% STANDARD PROCTOR DENSITY WITHIN 3% OF OPTIMUM MOISTURE CONTENT. FILL TO BE PLACED IN A MAXIMUM OF 6" LIFTS.
3. SIDEWALKS AND ACCESSIBLE ROUTES SHALL HAVE A SLOPE NO GREATER THAN 5% AND A CROSS FALL NO GREATER THAN 2% UNLESS NOTED OTHERWISE.
4. GRADING OF ALL HANDICAPPED SPACES AND ROUTES TO CONFORM TO STATE, LOCAL AND FEDERAL GUIDELINES.
5. FINAL PAVING, CURB AND SIDEWALK ELEVATIONS WILL BE PLACED AT PLUS OR MINUS 0.03 FOOT.
6. REFER TO LANDSCAPE SPECIFICATION FOR SEEDING AND SODDING REQUIREMENTS.
7. ANY CONCRETE, ROCK OR MATERIAL DEEMED UNSUITABLE FOR SUBGRADE, BY ENGINEER, SHALL BE DISPOSED OF OFFSITE AT CONTRACTOR'S EXPENSE.
8. IF REQUIRED DUE TO CONSTRUCTION, POWER POLES TO BE BRACED OR RELOCATED AT CONTRACTOR'S EXPENSE.

PW# 2007-002

NO.	DATE	REVISION
1	04/30/2010	ADDED ACCESS RAMPS TO WEST SIDE OF BUILDING
2	09/29/2008	REVISED TRANSFORMER PAD LOCATION
3	08/21/2008	REVISED SITE PLAN AND ADDED STORM DRAINS
4	08/11/2008	ADDED TRANSFORMER PADS AND REVISED STORM LINE
5	07/09/2008	REVISED GRADING AND ADDED CURB WALL

Pacheco Koch Consulting Engineers
8350 N. CENTRAL EXPWY., SUITE 1000 DALLAS, TX. 75206 972.235.3031

GRADING PLAN
JW OPERATING - PHASE 1
ADDISON AIRPORT INDUSTRIAL DISTRICT
LOT 7A, BLOCK B
TOWN OF ADDISON, TEXAS

DESIGN	DRAWN	DATE	SCALE	NOTES	FILE	NO.
CPM	CPM	FEB 2008	1"=40'			C2.1



THE SEAL APPEARING ON THIS DOCUMENT WAS AUTHORIZED BY STEVEN A. MARKUSSEN, P.E. 70090 ON 05/15/2008. ALTERATION OF A SEALED DOCUMENT WITHOUT PROPER NOTIFICATION TO THE RESPONSIBLE ENGINEER IS AN OFFENSE UNDER THE TEXAS ENGINEERING PRACTICE ACT.

RECORD DRAWING
 THIS DRAWING HAS BEEN REVISED TO REFLECT CONSTRUCTION RECORDS MAINTAINED AND PROVIDED BY THE CONTRACTOR FOR THIS PROJECT.
 CONTRACTOR: PINION CONSTRUCTION
 DATE REVISED: 06/24/2010

LOT 5, 6, & 7, BLOCK C
 ADDISON AIRPORT INDUSTRIAL DISTRICT
 (VOL. 50, PG. 207)
 WILEY POST JOINT VENTURE
 (VOL. 85095, PG. 2492)

LOT 4, BLOCK C
 ADDISON AIRPORT INDUSTRIAL DISTRICT
 (VOL. 50, PG. 207)
 KEVIN & DONNA GARDNER
 (VOL. 2005101, PG. 9280)

LOT 8, BLOCK C
 ADDISON AIRPORT INDUSTRIAL DISTRICT
 (VOL. 50, PG. 207)

LOT 12, BLOCK B
 ADDISON AIRPORT INDUSTRIAL DISTRICT
 (VOL. 50, PG. 207)
 MIDWAY ADDISON GROUP, LTD.
 (INST. NO. 200600431457)

LOT 11, BLOCK B
 ADDISON AIRPORT INDUSTRIAL DISTRICT
 (VOL. 50, PG. 207)
 BD & GL INVESTMENTS, L.L.C.
 (INST. NO. 20070002587)

LOT 13, BLOCK B
 ADDISON AIRPORT INDUSTRIAL DISTRICT
 (VOL. 50, PG. 207)
 DAVID H. KENNINGTON
 (VOL. 69081, PG. 391)

LOT 13, BLOCK A
 ADDISON AIRPORT INDUSTRIAL DISTRICT
 (VOL. 50, PG. 207)
 15500 WRIGHT BROS LP.
 (INST. NO. 200503605810)

LOT 14, BLOCK A
 ADDISON AIRPORT INDUSTRIAL DISTRICT
 (VOL. 50, PG. 207)
 15500 WRIGHT BROS LP.
 (INST. NO. 200503605810)

LOT 7A, BLOCK B
 ADDISON AIRPORT INDUSTRIAL DISTRICT
 4.258 TOTAL ACRES
 (185,459 SF)

LOT 7, BLOCK B
 ADDISON AIRPORT INDUSTRIAL DISTRICT
 (VOL. 50, PG. 207)
 ONE STORY BRICK
 (VOL. 2002176, PG. 12940)

LOT 6, BLOCK B
 ADDISON AIRPORT INDUSTRIAL DISTRICT
 (VOL. 50, PG. 207)
 RONALD A. PHILLEAUX
 (VOL. 96094, PG. 423)

LOT 15, BLOCK B
 ADDISON AIRPORT INDUSTRIAL DISTRICT
 (VOL. 50, PG. 207)
 RONALD A. PHILLEAUX
 (VOL. 96084, PG. 423)

LOT 14, BLOCK B
 ADDISON AIRPORT INDUSTRIAL DISTRICT
 (VOL. 50, PG. 207)
 POLLAN REALTY, LTD.
 (INST. NO. 200600157612)

MIDWAY ROAD

WRIGHT BROTHERS DRIVE

WILEY POST ROAD

BENCH MARK LIST

BM# 1	"□" CUT FOUND IN BOTTOM STEP OF LOADING DOCK AT 15502 MIDWAY ROAD.	ELEV= 636.05
BM# 2	"x" CUT SET IN CONCRETE 2.3± WEST OF THE SOUTHBOUND BACK OF CURB AND 24± NORTHWEST OF TELEPHONE MANHOLE.	ELEV= 633.87
BM# 3	"□" CUT SET ON THE NORTHEAST CORNER OF INLET ON THE SOUTH SIDE OF THE TRIANGLE MEDIAN AT THE INTERSECTION OF WILEY POST ROAD AND WRIGHT BROTHERS DRIVE.	ELEV= 636.76

JW OPERATING - PHASE 1