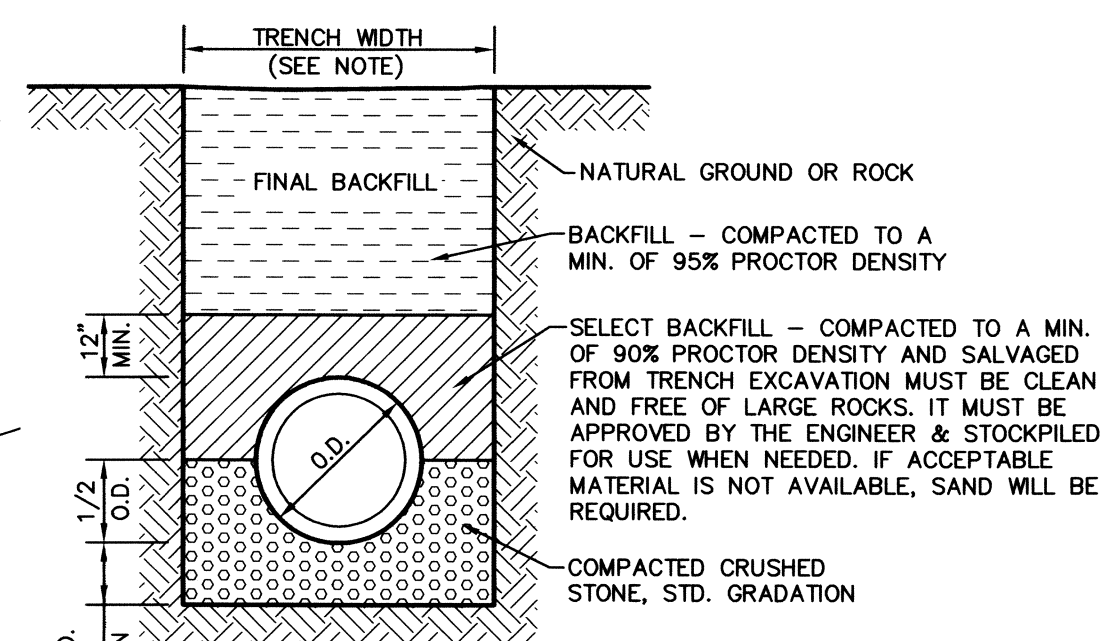
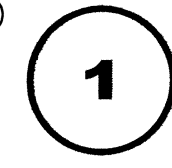


VICINITY MAP (NOT TO SCALE)



NOTE: WIDTH OF TRENCH SHALL BE AS FOLLOWS: (A) FOR 24" PIPE OR SMALLER, TRENCH WIDTH SHALL BE 24" OR O.D. OF PIPE PLUS 16", WHICHEVER IS GREATER (B) FOR 24" TO 72" PIPE, THE TRENCH WIDTH SHALL BE O.D. OF PIPE PLUS 24". (C) FOR PIPE GREATER THAN 72", THE TRENCH WIDTH SHALL BE 1.25 * O.D. PLUS 1 FT.

CLASS III REINFORCED CONCRETE PIPE EMBEDMENT



NOT TO SCALE

LEGEND

- B. BOLLARD
EM. ELECTRIC METER
PP. POWER POLE
LS. LIGHT STANDARD
WM. WATER METER
WV. WATER VALVE
ICV. IRRIGATION CONTROL VALVE
FH. FIRE HYDRANT
CO. CLEANOUT
MH. MANHOLE
TSC. TRAFFIC SIGNAL CONTROL
TSP. TRAFFIC SIGNAL POLE
TEL. TELEPHONE BOX
JL. FLOOD LIGHT
FP. FLAG POLE
SIGN. TRAFFIC SIGN
IRS. 1/2-INCH IRON ROD W/ "PACHECO KOCH" CAP SET
(C.M.) CONTROLLING MONUMENT
PROPERTY LINE
FENCE
OHL. OVERHEAD UTILITY LINE
E. UNDERGROUND ELECTRIC LINE
T. UNDERGROUND TELEPHONE LINE
C. UNDERGROUND CABLE LINE

DRAINAGE GENERAL NOTES

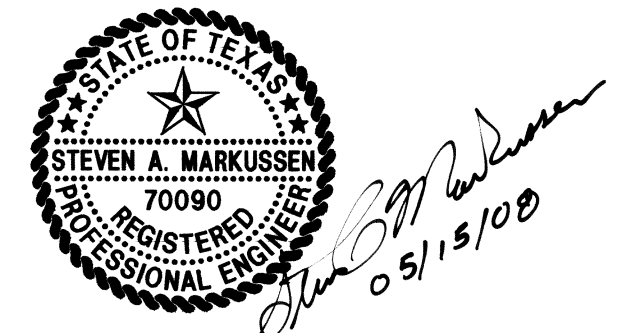
- 1. UNLESS NOTED, STORM DRAIN LINES MAY BE OF THE FOLLOWING MATERIALS: A. RCP C-75, CLASS III (REQUIRED IN THE PUBLIC RIGHT OF WAY) B. ADS N-12 C. HANCOCK HI-Q AND INSTALLED IN ACCORDANCE WITH MANUFACTURER'S SPECIFICATIONS. 2. UNLESS NOTED, GRATE INLET TO BE "AMERICAN INDUSTRIAL PIPE-CAST PRODUCTS, INC." PRECAST CATCH BASIN, SIZED AS SHOWN, OF APPROVED EQUAL. 3. TRENCH BACKFILL MATERIAL SHALL CONFORM TO THE REQUIREMENTS OF NCTCOG ITEM 6.2.10 AND SHALL BE MECHANICALLY COMPACTED IN ACCORDANCE WITH NCTCOG ITEM 6.2.9 TO A MINIMUM OF 90% STANDARD PROCTOR DENSITY UNLESS OTHERWISE SHOWN ON THESE PLANS OR STATED IN THE STANDARD CITY SPECIFICATIONS. 4. EMBEDMENT SHALL CONFORM TO THE REQUIREMENTS OF NCTCOG ITEM 6.2.9 UNLESS OTHERWISE SHOWN ON THESE PLANS OR STATED IN THE STANDARD CITY SPECIFICATIONS. 5. A ROUND MANHOLE COVER MEETING CITY SPECIFICATIONS SHALL BE PLACED IN ALL INLET TOPS. THE MANHOLE COVER SHALL BE PLACED NEAR THE OUTLET PIPE. 6. ALL CONCRETE FOR INLETS AND DRAINAGE STRUCTURES SHALL CONFORM TO NCTCOG ITEM 7.4.5, CLASS "A" UNLESS OTHERWISE SHOWN ON THESE PLANS OR STATED IN STANDARD CITY SPECIFICATIONS. 7. CRUSHED STONE BEDDING OR APPROVED EQUAL SHALL BE PROVIDED BY THE CONTRACTOR WHEN ROCK IS ENCOUNTERED IN TRENCHES. THERE SHALL BE NO ADDITIONAL PAY ITEM OF THE CRUSHED STONE BEDDING.

PW# 2007-002

Revision table with columns: NO., DATE, REVISION. Includes entries for 08/21/2008, 08/11/2008, 06/12/2008, and 06/11/2008.

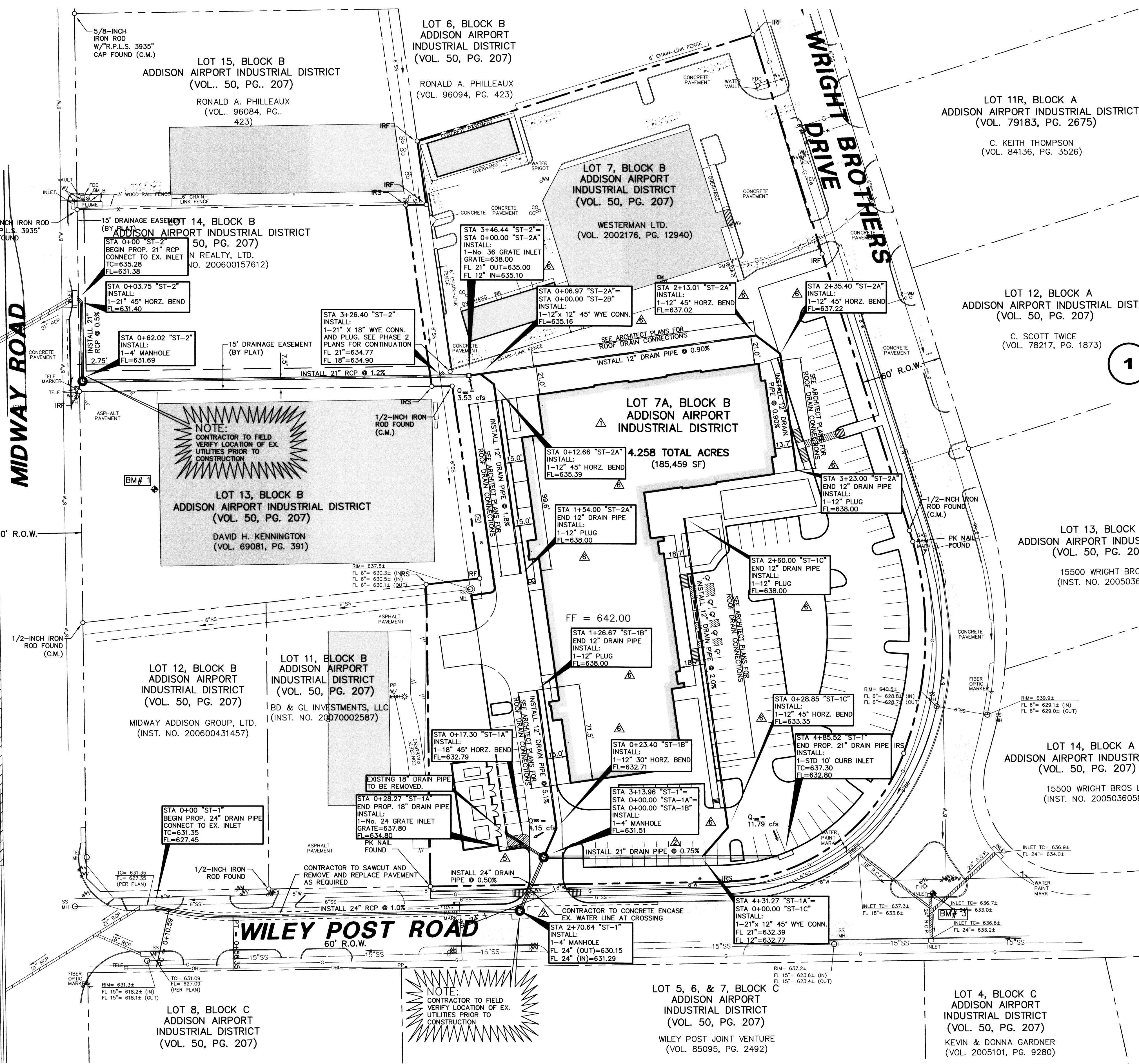
Pacheco Koch Consulting Engineers 8350 N. CENTRAL EXPWY. SUITE 1000 DALLAS, TX. 75208 972.235.3031

Project title block: STORM SEWER PLAN, JW OPERATING - PHASE 1, ADDISON AIRPORT INDUSTRIAL DISTRICT, LOT 7A, BLOCK B, TOWN OF ADDISON, TEXAS. Includes design and drawing details table.



THE SEAL APPEARING ON THIS DOCUMENT WAS AUTHORIZED BY STEVEN A. MARKUSSEN, P.E. 70990 ON 05/15/2008. ALTERATION OF A SEALED DOCUMENT WITHOUT PROPER NOTIFICATION TO THE RESPONSIBLE ENGINEER IS AN OFFENSE UNDER THE TEXAS ENGINEERING PRACTICE ACT.

RECORD DRAWING THIS DRAWING HAS BEEN REVISED TO REFLECT CONSTRUCTION RECORDS MAINTAINED AND PROVIDED BY THE CONTRACTOR FOR THIS PROJECT. CONTRACTOR: PINION CONSTRUCTION DATE REVISED: 06/24/2010



BENCH MARK LIST table with columns: BM#, Description, ELEV. Includes BM# 1, 2, and 3.

Vertical text on the left edge: C:\WORK\06/24/2010 9:48AM DWG-271792-07.089CV-PHASE 1.DWG

Vertical text on the right edge: JW OPERATING - PHASE 1