

LINE TABLE

COURSE	MEASURED		(RECORD)	
	BEARING	DISTANCE	BEARING	DISTANCE
1	S45°37'02"E	21.23'		
2	S00°39'59"E	300.14'	(S89°45'40"W)	(200.00')
3	S89°18'30"W	200.12'	(S00°14'20"E)	
4	S00°41'30"E	200.72'	(S00°14'20"E)	
5	S47°17'56"E	202.54'	(S46°44"E)	
6	S21°16'56"E	350.89'	(S20°43"E)	
7	N69°43'04"E	30.00'	(N69°17"E)	
8	N70°38'55"E	165.74'	(N71°12'51"E)	
9	N44°10'12"E	7.05'	(N44°44'08"E)	
10	S00°39'59"E	490.88'	(S00°14'20"E)	
11	N89°47'19"E	60.66'	(S89°37'20"E)	(58.08')
12	S26°42'49"E	34.05'	(S26°12'50"E)	
13	S03°27'59"E	9.28'	(S02°58"E)	
14	N89°58'24"W	165.27'	(S89°48'10"W)	
15	S00°09'24"E	243.18'	(S00°22'50"E)	
16	S61°10'39"W	17.74'	(S66°06'26"W)	
17	S00°09'29"E	211.58'	(S00°22'50"E)	(211.04')
18	N67°26'03"W	272.68'	(N67°01'55"W)	(273.80')
19	S75°21'17"W	449.71'	(S75°48'25"W)	(448.95')
20	N00°00'04"E	159.62'	(N00°03'25"E)	(160.00')
21	N89°59'56"W	160.02'	(N89°56'35"W)	
22	N00°00'04"E	10.00'	(N00°03'25"E)	
23	N75°21'17"E	408.83'	(N75°48'25"E)	(408.36')
24	N21°01'39"W	320.94'	(N20°43'53"W)	(320.72')
25	N89°44'31"E	10.21'	(N89°49'30"E)	(9.98')
26	N20°38'06"W	221.75'	(N20°17'10"W)	
27	N89°54'56"W	177.90'	(S89°54'10"W)	(176.27')
28	N00°18'06"W	663.91'	(N00°05'50"W)	
29	S89°33'56"W	105.61'	(N89°58'54"W)	(105.72')
30	N56°29'35"W	90.34'	(N56°19'03"W)	(90.20')
31	N21°11'02"W	170.55'	(N20°38'30"W)	(170.87')
32	S89°17'19"W	278.28'	(S89°48'55"W)	
33	N00°34'41"W	470.04'	(N00°24'02"W)	
34	EAST	70.73'	(EAST)	(69.30')
35	N00°39'08"W	236.73'	(S23.76')	

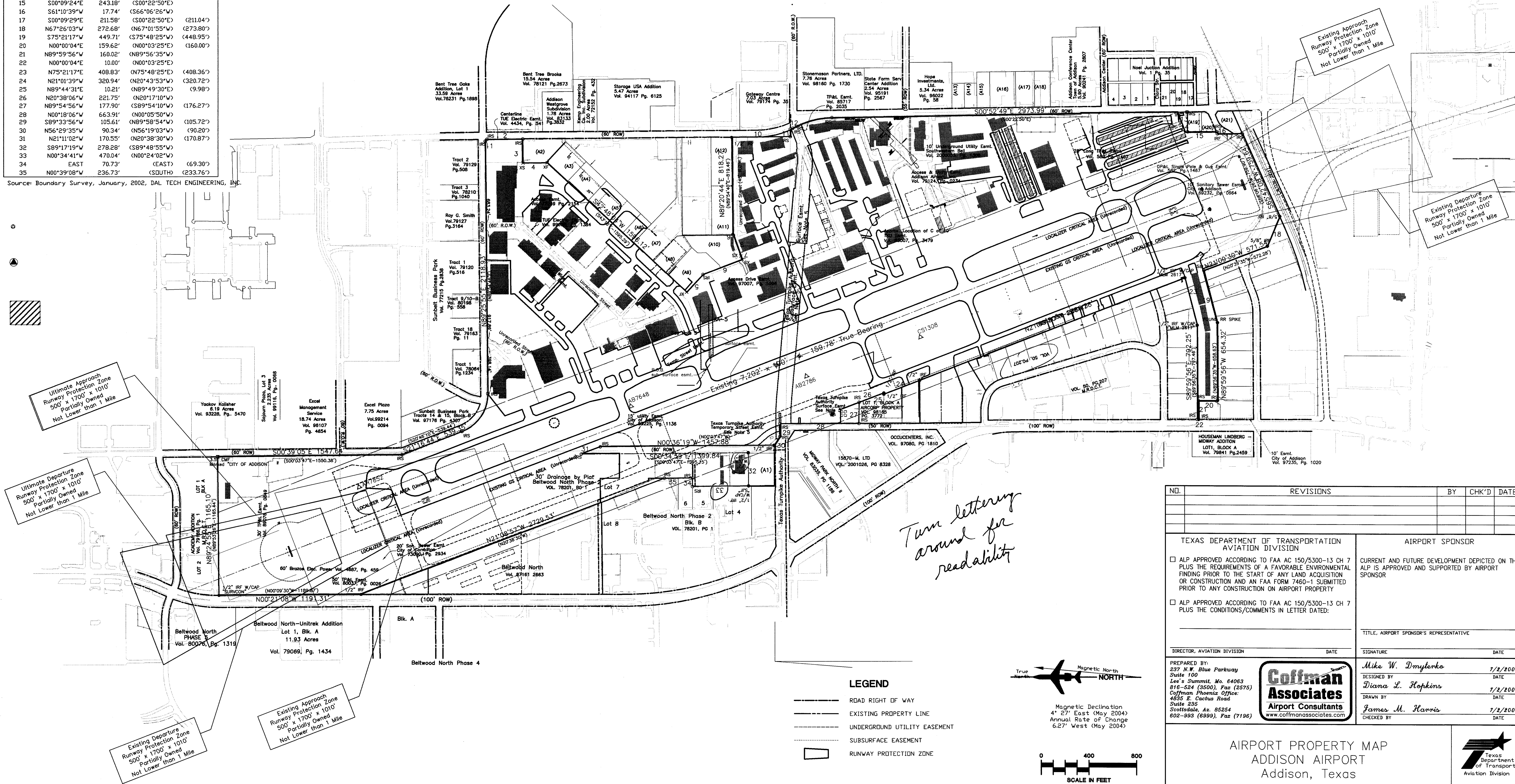
Source: Boundary Survey, January, 2002, DAL TECH ENGINEERING, INC.

PROPERTY DATA

TRACT #	ACRES	TITLE	GRANTOR/REMARKS	COUNTY RECORD VOL./PAGE	DATE	FUNDING
1	365.34	DEED	Addison Airport, Inc	77010/1391	12/30/1976	Fee Simple
2	1.0	JUDGEMENT CAUSE # 80-1894-D	W. H. Lafferty	91079/2687	5/9/1980	Judgement Fee Simple
3		DEED	Beltwood North Joint Venture, et al	82022/1211	1/18/1982	Fee Simple
4	1.495	DEED	Bob Chester and William F. Chester	98015/2144	12/18/1997	Fee Simple
5	1.498	DEED	Protecta-Cab, Inc.	97217/1350	9/29/1997	Fee Simple
6		DEED	Roy V. Kincaid, Jr.	99155/2291	9/29/1997	Fee Simple
7	1.005	DEED	Billy Joe Mullins, Jr.	99249/5436	12/27/1999	Fee Simple
8	0.528	DEED	George Marko, Trustee, et al	99078/1254		Fee Simple
9	0.25	DEED	Bobbie L. Ddom, et al	81150/1985	6/25/1981	Fee Simple
10	0.25	DEED	Donnell Jones, et al	81150/1993	8/3/1981	Fee Simple
11	0.25	DEED	Annie Ruth Harge, et al	81150/1991	8/3/1981	Fee Simple
12	0.25	DEED	Dawald Coleman, et al	81150/1989	8/3/1981	Fee Simple

GENERAL NOTES:

1. Bearings are referenced to the Texas State Plane coordinate system (NAD83).



NO.	REVISIONS	BY	CHK'D	DATE

TEXAS DEPARTMENT OF TRANSPORTATION AVIATION DIVISION		AIRPORT SPONSOR	
<input type="checkbox"/> ALP APPROVED ACCORDING TO FAA AC 150/5300-13 CH 7 PLUS THE REQUIREMENTS OF A FAVORABLE ENVIRONMENTAL FINDING PRIOR TO THE START OF ANY LAND ACQUISITION OR CONSTRUCTION AND AN FAA FORM 7460-1 SUBMITTED PRIOR TO ANY CONSTRUCTION ON AIRPORT PROPERTY		CURRENT AND FUTURE DEVELOPMENT DEPICTED ON THIS ALP IS APPROVED AND SUPPORTED BY AIRPORT SPONSOR	
<input type="checkbox"/> ALP APPROVED ACCORDING TO FAA AC 150/5300-13 CH 7 PLUS THE CONDITIONS/COMMENTS IN LETTER DATED:		TITLE, AIRPORT SPONSOR'S REPRESENTATIVE	
DIRECTOR, AVIATION DIVISION		SIGNATURE	
DATE		DATE	
PREPARED BY: 237 N.W. Blue Parkway Suite 100 Lee's Summit, Mo. 64063 816-524 (3500), Fax (2675) Coffman Phoenix Office: 4855 E. Cactus Road Suite 235 Scottsdale, Az. 85254 602-983 (6999), Fax (7196)		Mike W. Dmylenko 1/2/2004 DESIGNED BY: Diana L. Hopkins 1/2/2004 DRAWN BY: James M. Harris 1/2/2004 CHECKED BY:	

AIRPORT PROPERTY MAP
ADDISON AIRPORT
 Addison, Texas

TEXAS
Department of Transportation
Aviation Division

SHEET 15 OF 15

Coffman Associates, INC. 10/20/02 10:00:02 AM