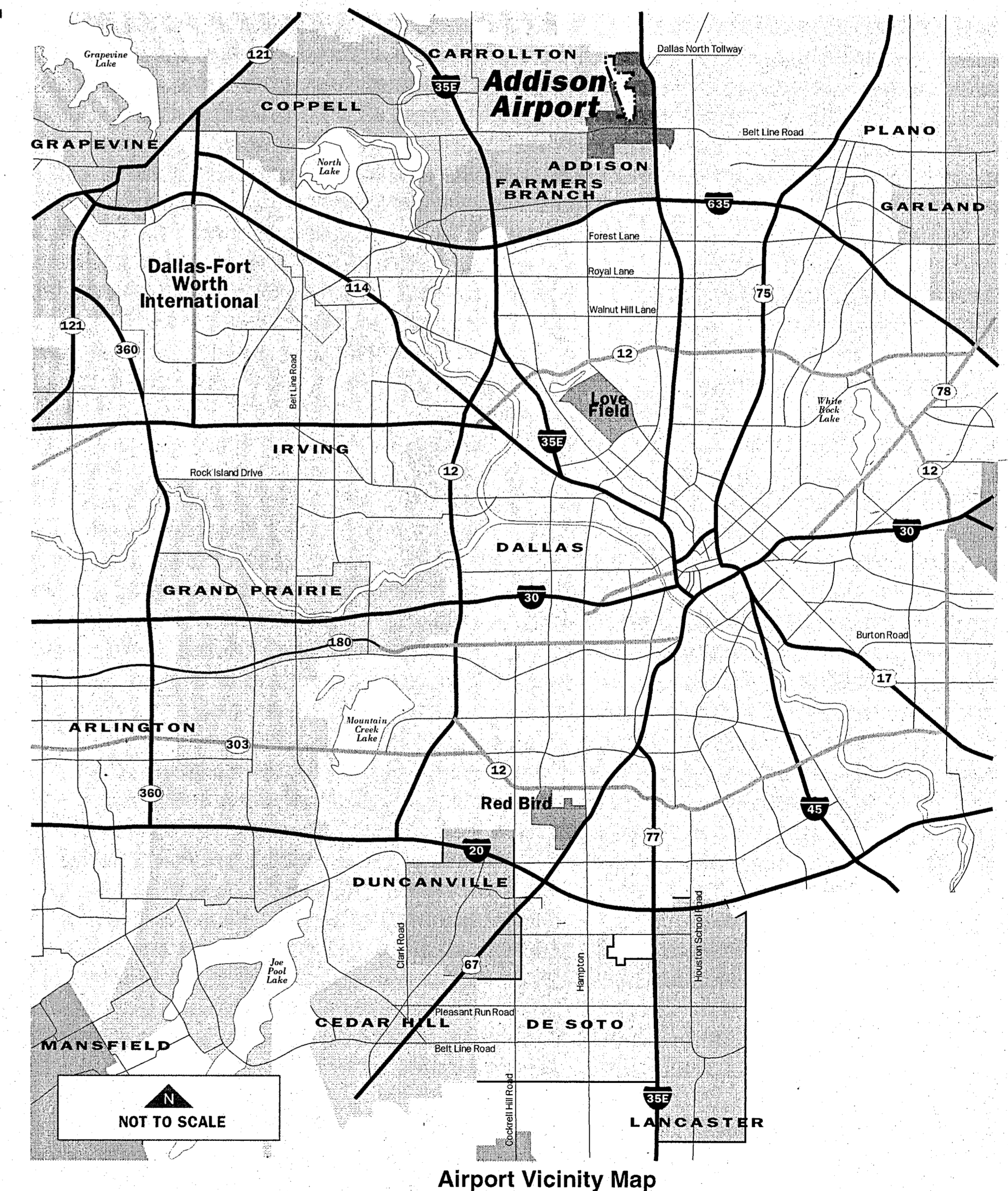


# airport master plan update

Addison, Texas

## AIRPORT LAYOUT PLAN DRAWING SET

- 1 OF 12 AIRPORT LAYOUT PLAN
- 2 OF 12 AIRPORT AIRSPACE RUNWAY 15 APPROACH PLAN VIEW
- 3 OF 12 AIRPORT AIRSPACE RUNWAY 33 APPROACH PLAN VIEW
- 4 OF 12 AIRPORT AIRSPACE RUNWAY 15/33 PROFILE VIEW
- 5 OF 12 SOUTHEAST AREA PLAN
- 6 OF 12 EAST AREA PLAN
- 7 OF 12 SOUTHWEST AREA PLAN
- 8 OF 12 NORTHWEST AREA PLAN
- 9 OF 12 NORTHEAST AREA PLAN
- 10 OF 12 RUNWAY 15 INNER PORTION OF THE APPROACH SURFACE DRAWING
- 11 OF 12 RUNWAY 33 INNER PORTION OF THE APPROACH SURFACE DRAWING
- 12 OF 12 AIRPORT PROPERTY MAP 'EXHIBIT A'



AIRPORT MASTER PLAN UPDATE  
B26-6  
DEC 1997  
Approved Airport Layout Plan 12-18-97 SWC

AIRPORT MASTER PLAN UPDATE  
B26-6  
DEC 1997

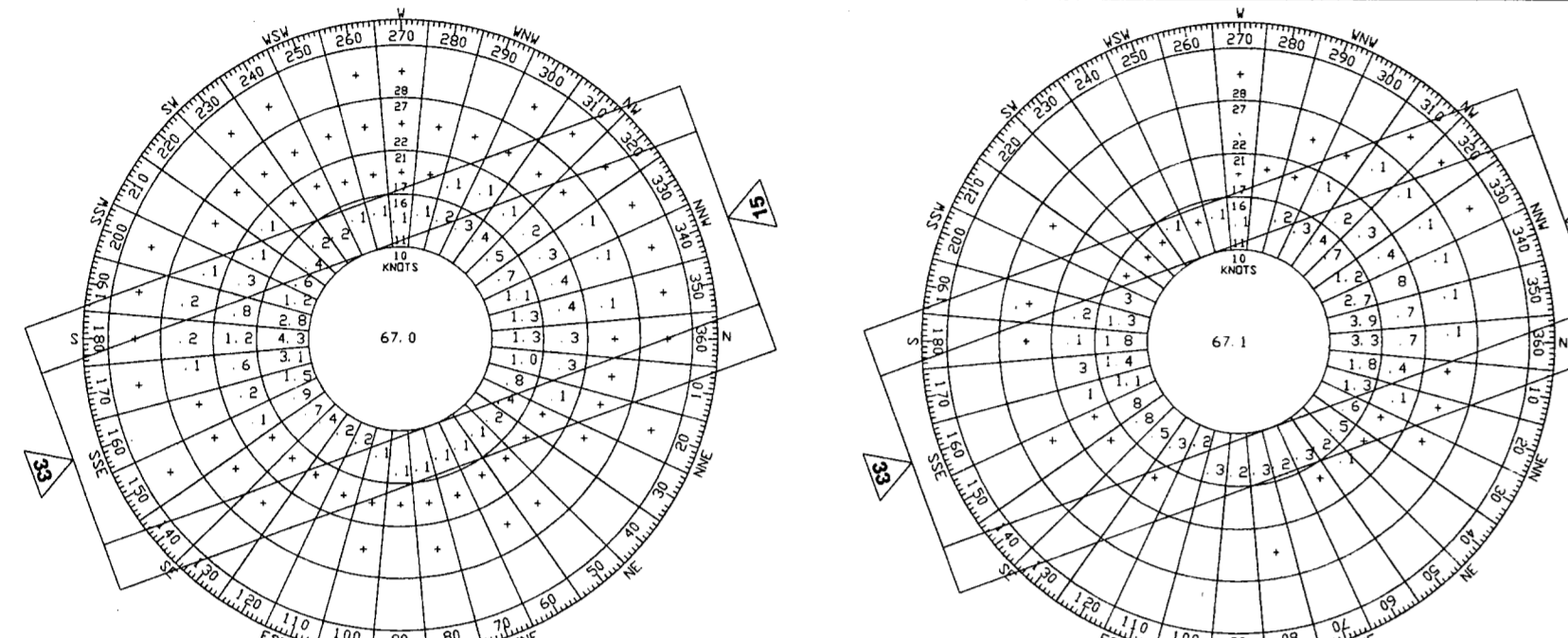


**BUILDING LEGEND**

#	TENANT OR OWNER	TOP ELEVATION	#	TENANT OR OWNER	TOP ELEVATION	#	TENANT OR OWNER	TOP ELEVATION	#	TENANT OR OWNER	TOP ELEVATION	#	TENANT OR OWNER	TOP ELEVATION
1.	T-HANGAR "CITY" (300)	646.2	16A.	AIRPORT FLYING SCHOOL/WORKS AVIATION	655.2	31.	PATIO HANGAR (1200)	656.2	47.	CROSBY REAL ESTATE	672.2	63.	WESTINGHOUSE AIR PLAZA	682.2
2.	T-HANGAR "CITY" (400)	648.1	16B.	PORT-O-PORTS (3)	657.9	32.	HELI & HAYES (1300)	658.2	48.	FRIENDLY AVIATION	662.2	64.	DOTLE HARTMAN	672.2
3.	T-HANGAR "CITY" (500)	650.9	17.	PATIO HANGAR (1500)	657.9	33.	FLIPS/LONG SHOTS/AVIATION	658.2	49.	FRIENDLY AVIATION	668.4	65.	NETE INDUSTRIES	672.2
4.	GRAND AVIATION SERVICES	659.2	18.	PATIO HANGAR (1400)	657.9	34.	AMERICAN FLIGHTS	659.2	50.	FRIENDLY AVIATION	668.4	66.	REDEME INDUSTRIES	682.2
5A.	SKOTTEN AVIATION, INC.	705.6	19.	T-HANGAR "CITY" (600)	661.7	35.	TOY BOX	663.9	51.	FRIENDLY AVIATION	668.4	67.	INTEREST	678.4
5B.	AVIAGROUP	706.9	20.	WALTER FULLER AIRCRAFT SALES/AIRCRAFT WELDING & SHEET METAL CO./GRUBBS AVIATION/STANPAC AVIATION	666.8	36.	LENIX HANGAR	663.2	52.	CROSBY REAL ESTATE	664.2	68.	ADDISON AIRPORT OF TEXAS INC.	684.2
6.	T-HANGAR "CITY" (TO BE REMOVED)	653.4	21.	JET 1 HANGAR	668.2	37.	NORTH TEXAS AIRCRAFT SERVICES, INC.	663.9	53A.	CARTER CROWLEY	672.2	69.	MILLON AIR/PROHOMPT	671.2
7.	T-HANGAR "CITY" (TO BE REMOVED)	653.4	22.	JET 1 & 2 HANGAR	667.2	38.	AR-D SPECIALISTS	667.2	53B.	CARTER CROWLEY	672.2	70.	MILLON AIR/PROHOMPT	671.2
8.	OMNIFLIGHT HELICOPTERS, INC.	667.4	23.	STRAW AIR	667.1	39.	AR-D SPECIALISTS	667.1	54.	FRIENDLY AVIATION	672.2	71.	ITALK	693.2
9.	OMNIFLIGHT HELICOPTERS, INC.	667.4	24.	PATIO HANGAR (1800)	657.9	40.	RIMAR PROP	666.1	55.	FRATT & WORTHINGTON	672.2	72.	CO-OP HANGAR C	694.2
10.	PATIO HANGAR	657.2	25.	REMOVED	658.2	41.	SLS PROPERTIES	666.1	56.	CON-AS SUPPORT	667.1	73.	CO-OP HANGAR B	692.2
11.	CHUCK HAGLEY (700)	660.8	26.	REMOVED	664.4	42.	WARFIELD	666.1	57.	KEITH PRODUCTS	666.7	74.	CO-OP HANGAR A	692.2
12.	HENLEY AIRCRAFT SERVICE	667.8	27.	REMOVED	664.4	43.	MERCURY AIR SERVICES	662.9	58.	CANAUGH FLIGHT MUSEUM	667.7	75.	AIR TRAFFIC CONTROL TOWER	687.8
13A.	FUTE ELECTRONICS	667.8	28.	REMOVED	666.3	44.	MERCURY AIR SERVICES/AVIATION	672.2	59.	CANAUGH FLIGHT MUSEUM	668.2	76.	FIRE DEPARTMENT	678.9
13B.	HENLEY AIRCRAFT SERVICE	667.8	29.	REMOVED	666.3	45.	MERCURY AIR SERVICES/AVIATION	672.2	60.	CANAUGH FLIGHT MUSEUM	672.2	77.	POLICE DEPARTMENT	681.4
14.	AIR BEN AVIATION	662.4	30.	T-HANGAR "CITY" (1000)	654.4	46.	FOSTER EDWARDS AIRCRAFT COMPANY	674.6	61.	CANAUGH FLIGHT MUSEUM	672.2	78.	ADDISON TOWER/OFFICE BUILDING	775.7
15.	CENTRELINE AVIATION	662.2	31.	T-HANGAR "CITY" (1100)	656.4	47.	FOSTER EDWARDS AIRCRAFT COMPANY	674.6	62.	WONAHCH AIR	672.2	79.	PARKING GARAGE	695.1

FEDERAL AVIATION ADMINISTRATION  
Southwest Region  
APPROVED  
Approved - Subject to conditions /  
Comments in letter dated 12-18-97  
12-18-97  
DATE  
MANAGER, TEXAS AIRPORT DEV OFFICE  
97-ASW-5227-ARA

SPONSOR APPROVAL  
Job Bogart 12-16-97  
DATE  
FEDERAL AVIATION ADMINISTRATION  
DATE



**IFR WIND COVERAGE SUMMARY**

R/W 15/33	62.2%	79.9%
R/W 33/3	66.6%	90.1%
R/W 15 & 33	75.0%	95.0%

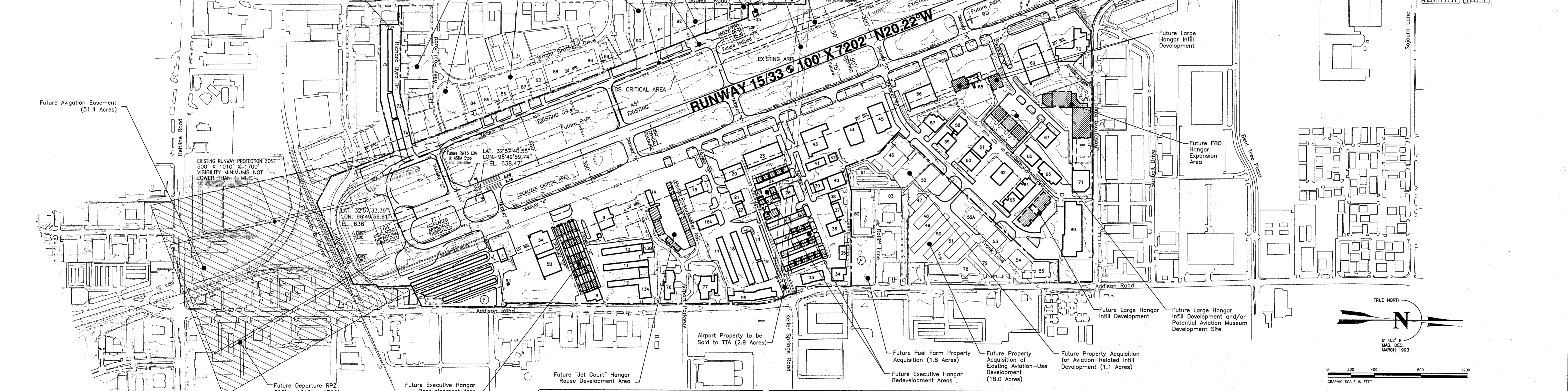
WIND COVERAGE PROVIDED UNDER IFR CONDITIONS 15-KNOT MINIMUM CROSSWIND, 5-KNOT TAILWIND TO MAXIMUM HEADWIND

SOURCE: NATIONAL OCEANIC AND ATMOSPHERIC ADMINISTRATION, NATIONAL CLIMATIC DATA CENTER  
STATION: DALLAS, TEXAS  
PERIOD OF RECORD: 1986-1995

1. PERCENT OF WINDS LESS THAN 1000 FEET BUT EQUAL TO OR GREATER THAN 250 FEET ANGVISIBILITY LESS THAN THREE MILES, BUT EQUAL TO OR GREATER THAN ONE MILE.  
2. PERCENT OF WINDS EQUAL TO OR GREATER THAN 1000 FEET ANGVISIBILITY LESS THAN ONE MILE.  
3. 5-KNOT TAILWIND IS GENERALLY CONSIDERED MAXIMUM FOR GENERAL AVIATION AIRCRAFT IN APPROACH CATEGORIES A AND B WHEN LANDING UNDER IFR CONDITIONS.

**ALL WEATHER WINDROSE**  
10.5-KNOT CROSSWIND 16-KNOT CROSSWIND  
R/W 15/33 95.6% 99.6%  
SOURCE: NATIONAL OCEANIC AND ATMOSPHERIC ADMINISTRATION, NATIONAL CLIMATIC DATA CENTER  
STATION: DALLAS, TEXAS  
PERIOD OF RECORD: 1986-1995

**IFR WINDROSE**  
SOURCE: NATIONAL OCEANIC AND ATMOSPHERIC ADMINISTRATION, NATIONAL CLIMATIC DATA CENTER  
STATION: DALLAS, TEXAS  
PERIOD OF RECORD: 1986-1995



**NON-STANDARD CONDITIONS**

ITEM	AIRPLANE DESIGN GROUP		STANDARD		NON-STANDARD COND.		REMARKS	APPROVAL DATE
	EXISTING	FUTURE	EXISTING	FUTURE	EXISTING	FUTURE		
RUNWAY 33 SAFETY AREA LENGTH	D-II	D-II	1000'	1000'	450'	1000'	IMPLEMENT DECLARED DIST. STGS.	
RUNWAY 33 OBJECT FREE AREA LENGTH	D-II	D-II	1000'	1000'	305'	1000'	IMPLEMENT DECLARED DIST. STGS.	
RUNWAY 15 SAFETY AREA LENGTH	D-II	D-II	1000'	1000'	120'	1000'	IMPLEMENT SUBSURFACE DRAINAGE/GRADING PROJECT	
RUNWAY CENTERLINE TO HOLDLINE	D-II	D-II	250'	250'	200'	250'	RELOCATED EXISTING MARKINGS	

**DECLARED DISTANCES**

ITEM	RUNWAY 15	RUNWAY 33
TAKEOFF RUN AVAILABLE (TORA)	7038'	7100'
TAKEOFF DISTANCE AVAILABLE (TODA)	7038'	7100'
ACCELERATE-STOP DISTANCE AVAILABLE (ASDA)	6507'	7202'
LANDING DISTANCE AVAILABLE (LDA)	5528'	6431'

**REVISIONS**

No.	Date

**RUNWAY DATA**

ITEM	RUNWAY 15/33	
	EXISTING	FUTURE
RUNWAY WIDTH AND LENGTH	100' X (4)	100' X (7)
RUNWAY LIGHTING	MRL	MRL
RUNWAY MARKINGS	PRECISION	PRECISION
RUNWAY SAFETY AREA	500' X 862'	500' X 862'
RUNWAY OBJECT FREE AREA	800' X 851'	800' X 851'
RUNWAY OBSTACLE FREE ZONE	NO OBJECT PENETRATIONS	NO OBJECT PENETRATIONS
INSTRUMENT RUNWAY	YES	YES
NAVIGATIONAL AIDS	ILS, LOC, NDB, VOR	GPS, LOC, NDB, VOR
LANDING AIDS	VASI, MALSR, PAPI	VASI, MALSR, PAPI
APPROACH SURFACES	50 1/2:1	50 1/2:1
APPROACH VISIBILITY MINIMUMS	1 MILE/2 MILE	1 MILE/2 MILE
THRESHOLD SIGHTING CRITERIA	NO OBJECT PENETRATIONS	NO OBJECT PENETRATIONS
PAVEMENT STRENGTH (N 1000 LBS.)	805, 1000, 1601	805, 1000, 1601
PAVEMENT TYPE	ASPHALT	ASPHALT
EFFECTIVE RUNWAY GRADIENT %	0.03	0.03
% ALL WEATHER WIND COVERAGE (16/103 KNOTS)	99.6/95.6	99.6/95.6
FAA PART 77 CATEGORY	P-VI	P-VI
AIRCRAFT REFERENCE CODE (ARC)	D-II	D-II
RUNWAY LINE-OF-SIGHT	CRITERIA MET	CRITERIA MET
CRITICAL AIRCRAFT	ORNLAW 643/544	ORNLAW 643/544
TOUCHDOWN ZONE ELEVATION	643/644	643/644

**AIRPORT DATA**

ITEM	EXISTING	FUTURE
AIRPORT ELEVATION (AMSL)	644'	644'
AIRPORT REFERENCE POINT (ARP)	LAT. 32° 56' 08.81" N LONG. 96° 50' 11.21" W	LAT. 32° 56' 08.81" N LONG. 96° 50' 11.21" W
MEAN MAX. TEMP. HOTTEST MONTH	96.1°F	96.1°F
AIRPORT PROPERTY (ACRES)	368	424
UNICOM (MHz)	122.950	122.950
NPIAS CATEGORY	RELEVER	RELEVER
CONTROL TOWER (MHz)	126.0	126.0

**LAYOUT PLAN LEGEND**

ITEM	EXISTING	FUTURE
BUILDING RESTRICTION LINE	BRL	BRL
AIRPORT PROPERTY LINE	P	P
FENCE	X	X
AVIATION EASEMENT	E	E
RUNWAY PROTECTION ZONE	R	R
BUILDINGS	B	B
AIRFIELD PAVEMENT	P	P
FUEL STORAGE	F	F
ROTATING BEACON	R	R
LIGHTED WIND CONE & SEGMENTED CIRCLE	W	W
PRECISION APPROACH PATH INDICATOR (PAPI)	P	P
RUNWAY END IDENTIFIER LIGHTS (REILS)	R	R
VISUAL APPROACH SLOPE INDICATOR (VASI)	V	V
THRESHOLD LIGHTS (DISPLACED THRESHOLD LIGHTS)	T	T
HELICOPTER TOUCHDOWN AND LIFT-OFF AREA (TLof)	TLof	TLof
WINDCONE	W	W

NOTE: 1. THIS DRAWING SHOULD NOT BE USED AS A STANDARD FOR PLANNING OR DESIGN.  
2. BASE MAP PROVIDED BY AERIAL DATA SERVICE, TULSA, OKLAHOMA (SEPT. 1993).  
3. MAGNETIC DECLINATION TAKEN FROM 1993 AIRPORT LAYOUT PLAN BY GREENER, INC., FORT WORTH, TEXAS.  
4. HORIZONTAL COORDINATE DATUM IS BASED ON NAD83.  
5. RUNWAY THRESHOLD LAT/LONG INFORMATION TAKEN FROM OGS 768 ADDISON AIRPORT, DALLAS, TEXAS (DEC. 1993).  
6. REFER TO RUNWAY PROTECTION ZONE (RPZ) PLAN & PROFILE DRAWINGS FOR ROADWAY/RAILROAD CLEARANCE INFORMATION.

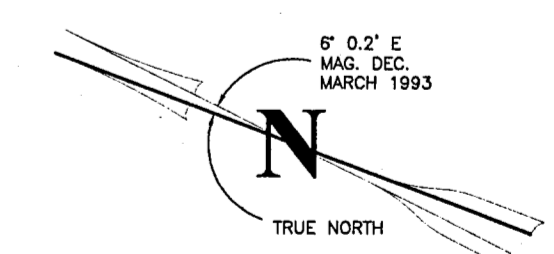
**ADDISON AIRPORT**  
ADDISON, TEXAS

**AIRPORT LAYOUT PLAN**

Barnard Dunkelberg & Company  
Tulsa, Oklahoma

FIGURE NUMBER  
METRIC SCALE  
SCALE 1" = 400'  
DATE JUNE, 1997  
DRAWING NUMBER 1 OF 12





**FAR PART 77 OBSTRUCTIONS**

NO.	ITEM	PENETRATION	PART 77 SURFACE	DISPOSITION	NO.	ITEM	PENETRATION	PART 77 SURFACE	DISPOSITION	NO.	ITEM	PENETRATION	PART 77 SURFACE	DISPOSITION
1	ANT AND APBN ON ATCT	59'	TRANSITIONAL	NONE	38	OL ON TANK	NONE (-15')	HORIZONTAL	NONE	92	LT POLE	16'	RW15 APPROACH	NONE
2	ANT ON HANGAR	29'	TRANSITIONAL	NONE	43	TRMSN TWR	NONE (-9')	TRANSITIONAL	NONE	93	LT POLE	19'	RW15 APPROACH	NONE
3	POLE	17'	TRANSITIONAL	NONE	48	GROUND	5'	PRIMARY	NONE	94	POLE	18'	RW15 APPROACH	NONE
4	HANGAR	11'	TRANSITIONAL	NONE	49	LTD ELEC EQUIP	12'	PRIMARY	NONE	95	POLE	18'	RW15 APPROACH	NONE
6	ANT ON OL BLDG	37'	TRANSITIONAL	NONE	50	FENCE	10'	PRIMARY	NONE	96	OL ON BLDG	14'	RW15 APPROACH	NONE
9	LT POLE	38'	TRANSITIONAL	NONE	51	ROAD (NON-INTERSTATE)	11'	PRIMARY	NONE	97	OL ON LT POLE	23'	RW15 APPROACH	NONE
11	OL ON BLDG	NONE (-18')	HORIZONTAL	NONE	52	GROUND	3'	PRIMARY	NONE	98	OL ON LT POLE	26'	RW15 APPROACH	NONE
13	HANGAR	25'	TRANSITIONAL	NONE	53	ROD ON OL GS	44'	PRIMARY	NONE	99	OL ON LT POLE	26'	RW15 APPROACH	NONE
16	VENT ON BLDG	21'	TRANSITIONAL	NONE	54	POLE	20'	PRIMARY	NONE	100	LT POLE	25'	RW15 APPROACH	NONE
23	LT POLE	14'	TRANSITIONAL	NONE	55	GROUND	2'	PRIMARY	NONE	101	POLE	8'	RW15 APPROACH	NONE
25	OL ON BLDG	NONE (-34')	HORIZONTAL	NONE	56	OL ON LTD WSK	29'	PRIMARY	NONE	102	LT POLE	12'	RW15 APPROACH	NONE
26	TREE	13'	TRANSITIONAL	NONE	87	POLE	31'	RW15 APPROACH	NONE	103	LT POLE	4'	RW15 APPROACH	NONE
29	OL ON BLDG	29'	HORIZONTAL	NONE	88	FLG POLE	30'	RW15 APPROACH	NONE	104	POLE	8'	RW15 APPROACH	NONE
30	POLE	27'	TRANSITIONAL	NONE	89	BLDG	17'	RW15 APPROACH	NONE	105	TRMSN TWR	1'	RW15 APPROACH	NONE
31	FLG POLE	NONE (-31')	TRANSITIONAL	NONE	90	TREE	21'	RW15 APPROACH	NONE	106	BLDG	18'	INNER TRANSITIONAL	NONE
33	ANT ON BLDG	18'	TRANSITIONAL	NONE	91	TREE	25'	RW15 APPROACH	NONE					

**REVISIONS**

No.	Date

NOTE: THIS DRAWING SHOULD NOT BE USED AS A STANDARD FOR PLANNING OR DESIGN. USGS MAPS USED ARE ADDISON, CARROLLTON, GARLAND, LEWISVILLE EAST, DALLAS, AND HEBRON, TX. MAGNETIC DECLINATION TAKEN FROM 1993 AIRPORT LAYOUT PLAN BY GREINER, INC., FORT WORTH, TEXAS.

**ADDISON AIRPORT**  
ADDISON, TEXAS

**AIRPORT AIRSPACE DRAWING**  
RUNWAY 15 APPROACH PLAN VIEW

**Barnard Dunkelberg & Company**  
Tulsa, Oklahoma

FIGURE NUMBER

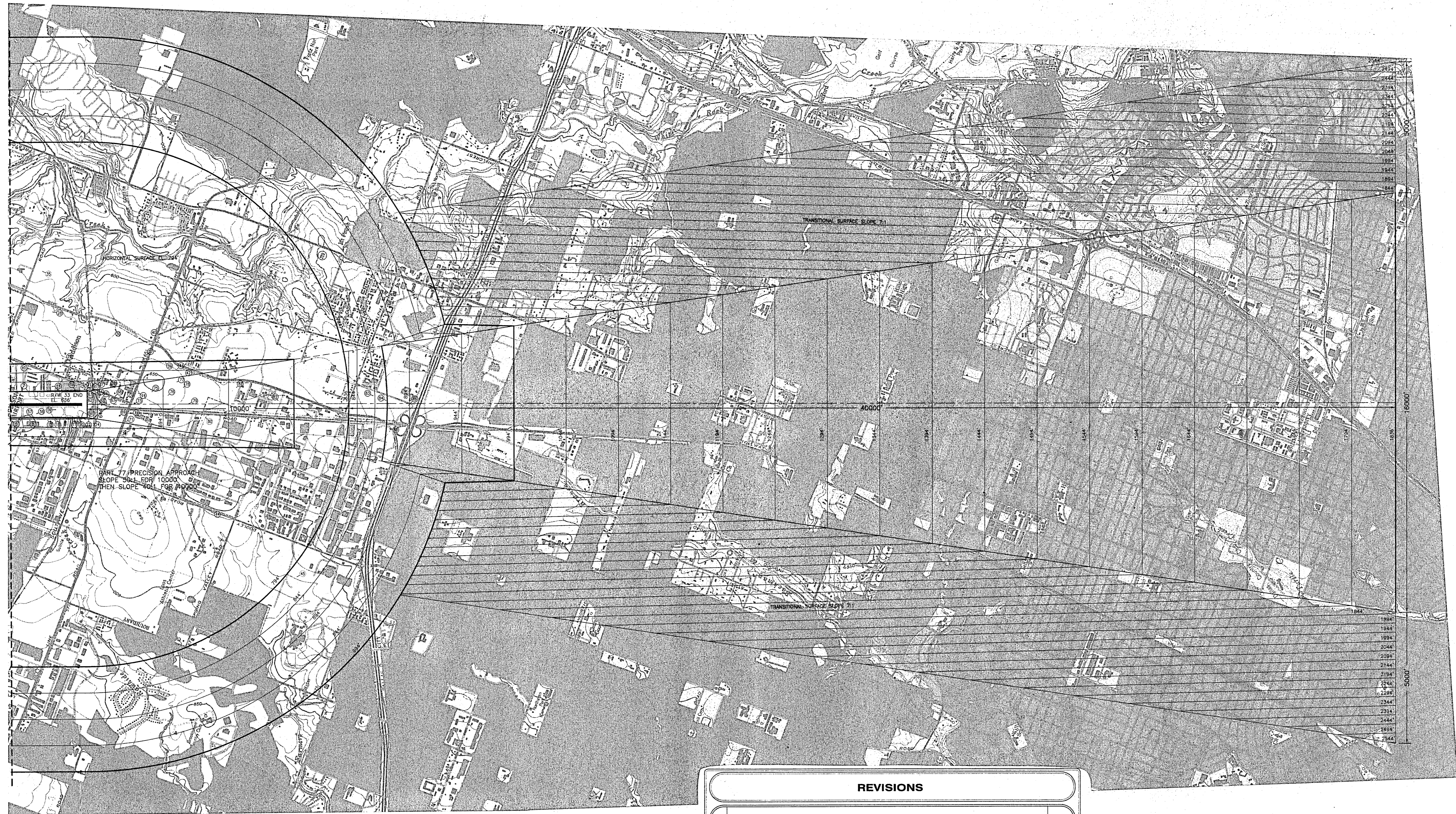
METRIC SCALE

SCALE  
1" = 2000'

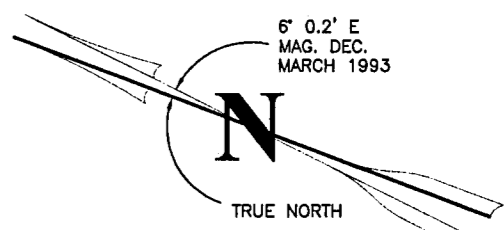
DATE  
MAY, 1997

DRAWING NUMBER  
2 OF 12





REVISIONS	
No.	Date



**FAR PART 77 OBSTRUCTIONS**

NO.	ITEM	PENETRATION	PART 77 SURFACE	DISPOSITION	NO.	ITEM	PENETRATION	PART 77 SURFACE	DISPOSITION	NO.	ITEM	PENETRATION	PART 77 SURFACE	DISPOSITION	NO.	ITEM	PENETRATION	PART 77 SURFACE	DISPOSITION
5	ANT ON HANGAR	23'	TRANSITIONAL	NONE	32	ANT ON OL BLDG	30'	TRANSITIONAL	NONE	63	ROD ON OL DME	7'	RW33 APPROACH	NONE	79	ROD ON OL BLDG	34'	RW33 APPROACH	NONE
7	LT POLE	38'	TRANSITIONAL	NONE	34	OL ON BLDG	NONE (-1')	TRANSITIONAL	NONE	64	POLE	12'	RW33 APPROACH	NONE	80	TRMSN TWR	NONE (-12')	RW33 APPROACH	NONE
8	HOPPER	26'	TRANSITIONAL	NONE	35	ANT ON OL BLDG	NONE (-1')	HORIZONTAL	NONE	65	RAILROAD	11'	RW33 APPROACH	NONE	81	ROD ON OL BLDG	27'	RW33 APPROACH	NONE
10	ANT ON OL TWR	5'	TRANSITIONAL	NONE	36	ROD ON OL BLDG	19'	HORIZONTAL	NONE	66	TREE	27'	RW33 APPROACH	NONE	82	OL ON BLDG	24'	RW33 APPROACH	NONE
12	HANGAR	25'	TRANSITIONAL	NONE	37	OL ON BLDG	15'	HORIZONTAL	NONE	67	BLDG	24'	RW33 APPROACH	NONE	83	OL ON BLDG	86'	RW33 APPROACH	NONE
14	ROD ON OL HANGAR	55'	TRANSITIONAL	NONE	39	OL ON BLDG	5'	TRANSITIONAL	NONE	68	TREE	26'	RW33 APPROACH	NONE	84	OL ON BLDG	84'	RW33 APPROACH	NONE
15	POLE	25'	TRANSITIONAL	NONE	40	ANT ON OL BLDG	3'	HORIZONTAL	NONE	69	OL ON LT POLE	10'	RW33 APPROACH	NONE	85	ANT ON OL BLDG	80'	RW33 APPROACH	NONE
17	POLE	20'	TRANSITIONAL	TO BE REMOVED OR RELOCATED	41	ANT ON BLDG	26'	TRANSITIONAL	NONE	70	POLE	12'	RW33 APPROACH	NONE	86	OL ON BLDG	81'	RW33 APPROACH	NONE
18	POLE	17'	TRANSITIONAL	TO BE REMOVED OR RELOCATED	42	ANT ON OL BLDG	62'	TRANSITIONAL	NONE	71	POLE	4'	RW33 APPROACH	NONE					
19	OL ON TANK	1'	HORIZONTAL	NONE	44	POLE ON OL BLDG	15'	HORIZONTAL	NONE	72	POLE	3'	RW33 APPROACH	NONE					
20	ANT ON BLDG	8'	TRANSITIONAL	NONE	45	ANT ON OL BLDG	NONE (-14')	CONICAL	NONE	73	LT POLE	2'	RW33 APPROACH	NONE					
21	TREE	25'	TRANSITIONAL	NONE	46	ANT ON OL BLDG	NONE (-51')	CONICAL	NONE	74	LT POLE	4'	RW33 APPROACH	NONE					
22	POLE	7'	TRANSITIONAL	NONE	47	ANT ON OL BLDG	NONE (-97')	CONICAL	NONE	75	BLDG	8'	RW33 APPROACH	NONE					
24	POLE	11'	TRANSITIONAL	NONE	60	ROAD (NON-INTERSTATE)	6"	RW33 APPROACH	NONE	76	OL ON BLDG	26'	RW33 APPROACH	NONE					
27	POLE	28'	TRANSITIONAL	NONE	61	POLE	10'	RW33 APPROACH	NONE	77	ANT ON OL BLDG	67'	RW33 APPROACH	NONE					
28	ANT ON OL BLDG	17'	HORIZONTAL	NONE	62	OL ON LOC	NONE (-1')	RW33 APPROACH	NONE	78	OL BLDG	61'	RW33 APPROACH	NONE					

NOTE: OBSTRUCTION IDENTIFICATION NUMBERS SHOWN WITHIN DASHED CIRCLES DO NOT PENETRATE SPECIFIED SURFACE.

NOTE: THIS DRAWING SHOULD NOT BE USED AS A STANDARD FOR PLANNING OR DESIGN. USGS MAPS USED ARE ADDISON, CARROLLTON, GARLAND, LEWISVILLE EAST, DALLAS, AND HEERON, TX. MAGNETIC DECLINATION TAKEN FROM 1993 AIRPORT LAYOUT PLAN BY GREINER, INC., FORT WORTH, TEXAS.

**ADDISON AIRPORT**  
ADDISON, TEXAS

**AIRPORT AIRSPACE DRAWING**  
RUNWAY 33 APPROACH PLAN VIEW

**Barnard Dunkelberg & Company**  
Tulsa, Oklahoma

FIGURE NUMBER

METRIC SCALE

SCALE  
1" = 2000'

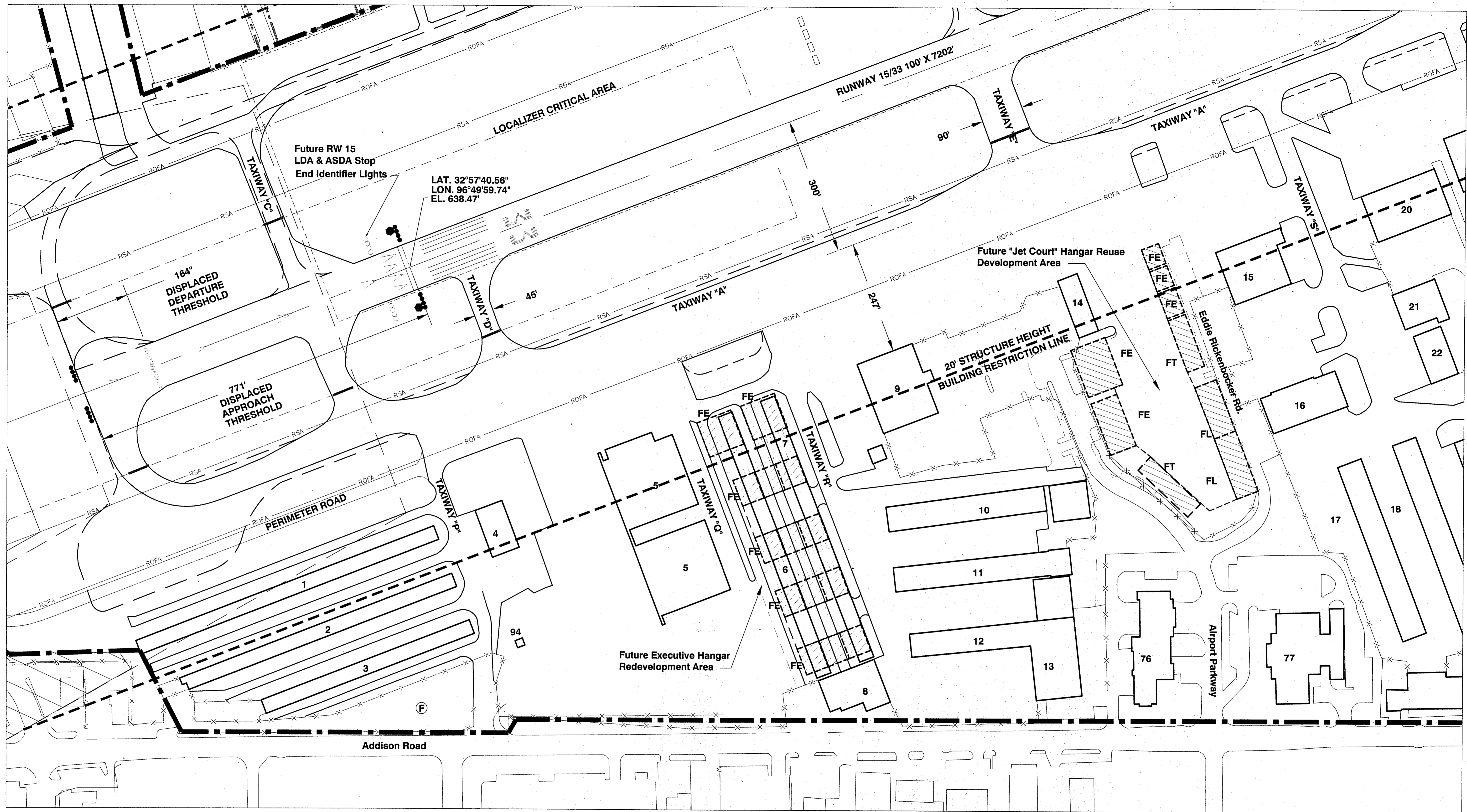
DATE  
MAY, 1997

DRAWING NUMBER  
3 OF 12









LAT. 32°57'40.56"  
LON. 96°49'59.74"  
EL. 638.47'

Future RW 15  
LDA & ASDA Stop  
End Identifier Lights

164"  
DISPLACED  
DEPARTURE  
THRESHOLD

771'  
DISPLACED  
APPROACH  
THRESHOLD

PERIMETER ROAD

Addison Road

Future "Jet Court" Hangar Reuse  
Development Area

20' STRUCTURE HEIGHT  
BUILDING RESTRICTION LINE

Future Executive Hangar  
Redevelopment Area

Edlie Rickenbacker Rd.  
Airport Parkway

**TAXIWAY DIMENSIONAL STANDARDS**

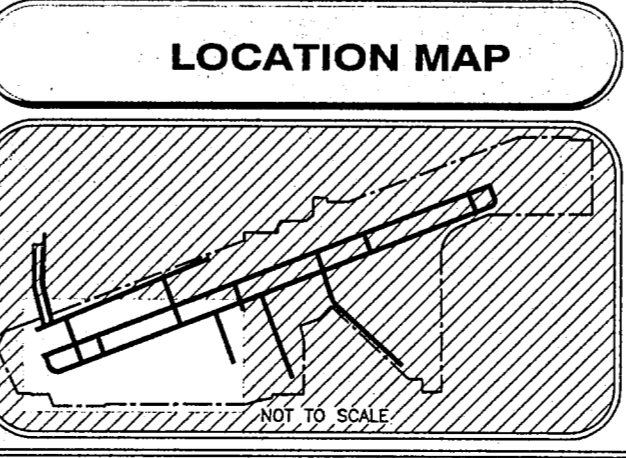
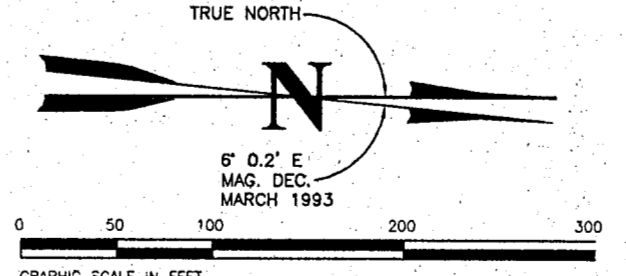
ITEM	AIRPLANE DESIGN GROUP	
	I	II
TAXIWAY WIDTH	25' [7.5m]	35' [10.5m]
TAXIWAY EDGE SAFETY MARGIN	5' [1.5m]	7.5' [2.25m]
TAXIWAY SHOULDER WIDTH	10' [3m]	10' [3m]
TAXIWAY SAFETY AREA WIDTH	49' [15m]	79' [24m]
TAXIWAY OBJECT FREE AREA WIDTH	89' [27m]	131' [40m]
TAXILANE OBJECT FREE AREA WIDTH	79' [24m]	115' [35m]

**REVISIONS**

No.	Date

**BUILDING LEGEND**

#	TENANT OR OWNER	TOP ELEVATION	#	TENANT OR OWNER	TOP ELEVATION
1.	T-HANGAR (200)	848.5'	16A.	AIRPORT FLYING SCHOOL/OWENS AVIATION	855.2'
2.	T-HANGAR (400)	848.1'	16B.	POST-OFFICES (2)	857.9'
3.	T-HANGAR (200)	850.9'	17.	PATIO HANGAR (1500)	857.9'
4.	CRON AVIATION SERVICES	668.9'	18.	PATIO HANGAR (1400)	857.9'
5A.	SKYTECH AVIATION, INC.	704.9'	26.	FIRE DEPARTMENT	678.9'
5B.	AGGROUP	704.9'	27.	POLICE DEPARTMENT	681.8'
6.	T-HANGAR (200) (TO BE REMOVED)	855.4'	20.	WALTER FULLER AIRCRAFT SALES/AIRCRAFT WELDING & SHEET METAL CO./GRUBBS AVIATION/CHARTER AVIATION	858.8'
7.	T-HANGAR (200) (TO BE REMOVED)	853.8'	21.	JET 10 HANGAR	868.2'
8.	ONEFLIGHT HELICOPTERS, INC.	687.4'	22.	JET 1 & 2 HANGAR	867.2'
9.	ONEFLIGHT HELICOPTERS, INC.	687.5'			
10.	PATIO HANGAR	857.2'			
11.	CHUCK WAGLEY (200)	860.8'			
12.	HOLEY AIRCRAFT SERVICES	867.8'			
13A.	FLUTE ELECTRONICS	867.8'			
13B.	HOLEY AIRCRAFT SERVICES	867.8'			
14.	ARI BEN AVIATOR	852.4'			
15.	CENTRALINE AVIATION	868.2'			



**LAYOUT PLAN LEGEND**

ITEM	EXISTING	FUTURE
BUILDING RESTRICTION LINE	---	---
AIRPORT PROPERTY LINE	---	---
FENCE	---	---
AVIGATION EASEMENT	---	---
RUNWAY PROTECTION ZONE	---	---
BUILDINGS	---	---
AIRFIELD PAVEMENT	---	---
FUEL STORAGE	---	---
BEACON	+	+
LIGHTED WIND CONE & SEGMENTED CIRCLE	+	+
PRECISION APPROACH PATH INDICATOR(PAPI)	+	+
RUNWAY END IDENTIFIER LIGHTS(REILS)	•	•

NOTE: THIS DRAWING SHOULD NOT BE USED AS A STANDARD FOR PLANNING OR DESIGN.

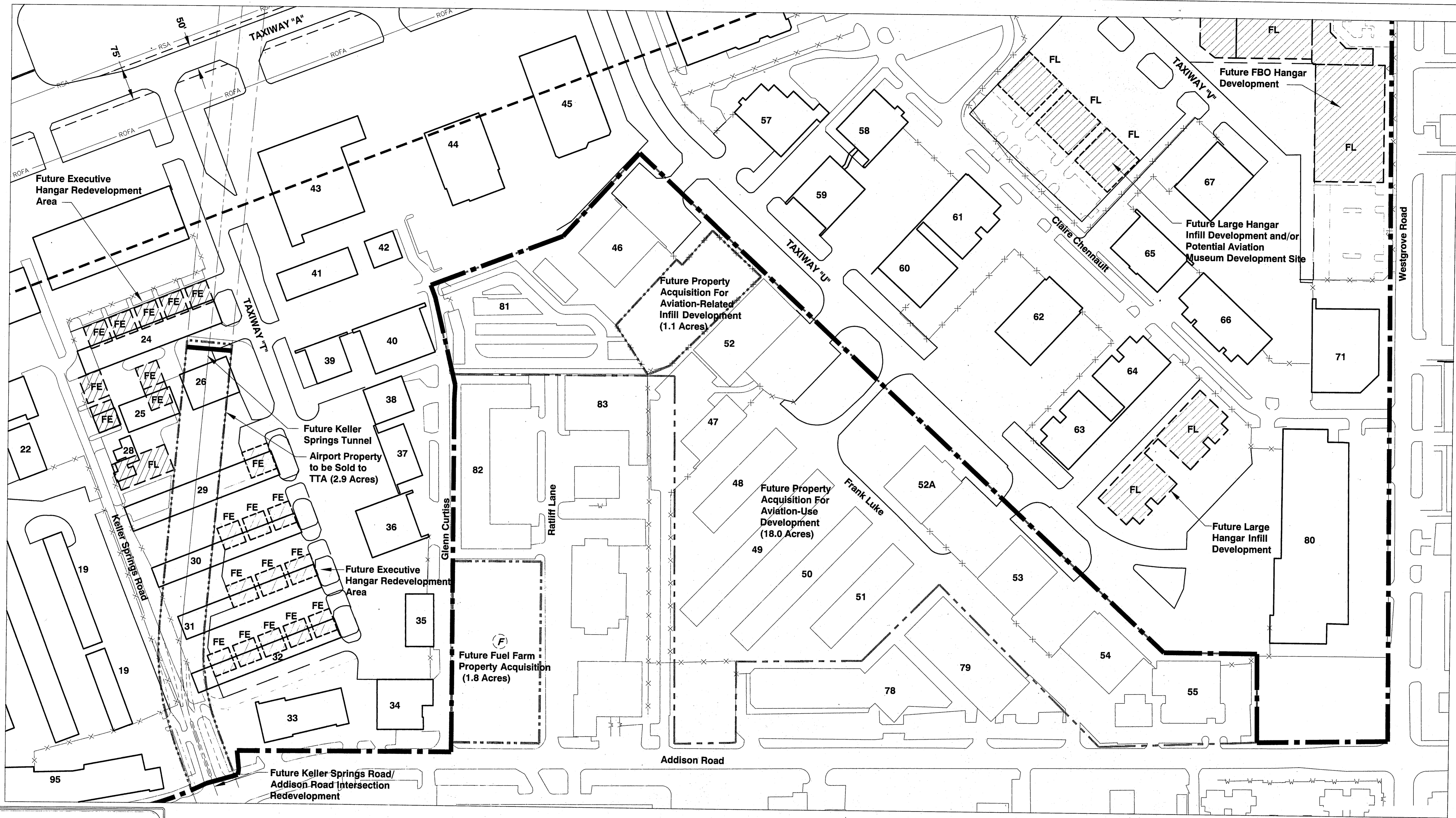
**ADDISON AIRPORT**  
ADDISON, TEXAS

**SOUTHEAST AREA PLAN**

Barnard Dunkelberg & Company  
Tulsa, Oklahoma

FIGURE NUMBER: \_\_\_\_\_  
METRIC SCALE: \_\_\_\_\_  
SCALE: 1" = 100'  
DATE: JUNE, 1997  
DRAWING NUMBER: 5 OF 12





**TAXIWAY DIMENSIONAL STANDARDS**

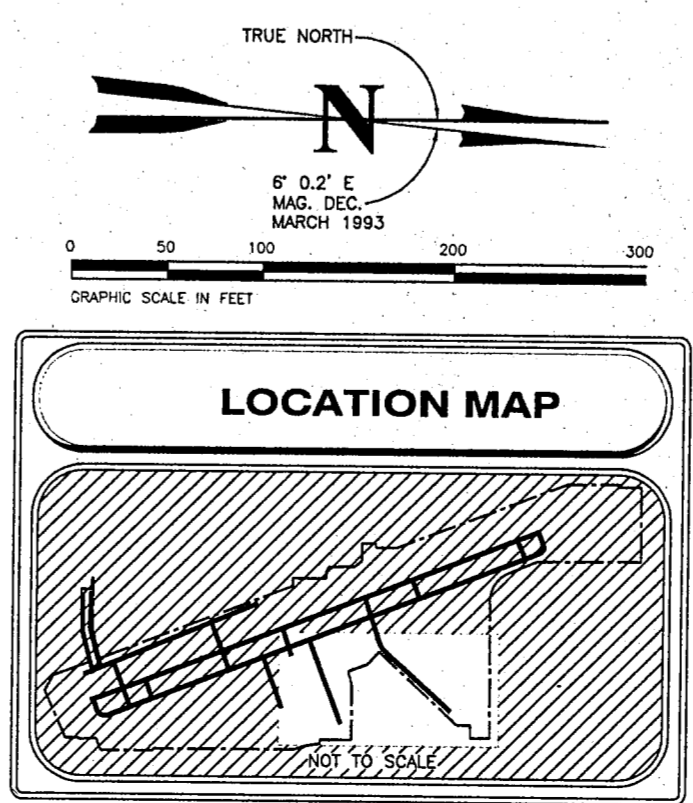
ITEM	AIRPLANE DESIGN GROUP	
	I	II
TAXIWAY WIDTH	25' [7.5m]	35' [10.5m]
TAXIWAY EDGE SAFETY MARGIN	5' [1.5m]	7.5' [2.25m]
TAXIWAY SHOULDER WIDTH	10' [3m]	10' [3m]
TAXIWAY SAFETY AREA WIDTH	49' [15m]	79' [24m]
TAXIWAY OBJECT FREE AREA WIDTH	89' [27m]	131' [40m]
TAXILANE OBJECT FREE AREA WIDTH	79' [24m]	115' [35m]

**REVISIONS**

No.	Date

**BUILDING LEGEND**

#	TENANT OR OWNER	TOP ELEVATION	#	TENANT OR OWNER	TOP ELEVATION	#	TENANT OR OWNER	TOP ELEVATION
19	T-HANGAR "D" (1000)	861.7	38	ARR-2 SPECIALISTS	872.8	52A	GARTER CROWLEY	875.4
22	JET 1 & 2 HANGAR	867.2	39	JET 1 "D" (1000)	867.2	53	GARTER CROWLEY	872.8
23	STEEL AIR	867.2	40	INCH PROP.	867.1	54	FREEDLY AVIATION	875.2
24	PATIO HANGAR (1000)	867.2	41	DELS PROPERTIES	869.4	55	FRATT & WHITNEY	869.1
25	REMOVED	863.2	42	WARFIELD	869.1	78	ADDISON TOWER/OFFICE BUILDING	778.7
26	REMOVED	864.0	43	MERCURY AIR SERVICES	862.8	79	PARKING GARAGE	880.1
27	REMOVED	858.7	44	MERCURY AIR SERVICES/AMERSTAR	872.2	80	WESTGROVE AIR PLAZA	883.9
28	REMOVED	854.4	45	MERCURY AIR SERVICES/INSTRUMENT SERVICES	871.0	81	ADDISON LOCKER	884.2
29	T-HANGAR "D" (1000)	854.4	46	FORTS EDWARDS AIRCRAFT COMPANY	867.2	82	TEX-AIR PARTS	863.7
30	T-HANGAR "D" (1100)	854.4	47	CONCRETE REAL ESTATE	867.2	83	ADDISON CAR CARE CENTER	861.7
31	PATIO HANGAR (1200)	854.2	48	FREEDLY AVIATION	862.7	85	CONDOURSE PLAZA	892.8
32	HEZ & HAVES (1300)	854.3	49	FREEDLY AVIATION	862.8	86	FE - Future Executive Hangar	875.2
33	FLAPS/LONG SHOTS/LEVS	865.0	50	FREEDLY AVIATION	865.0	87	FE - Future T-Hangar	872.2
34	AMERICAN FLIGHTS	865.4	51	FRANK LUKE	862.9	88	FE - Future Large Hangar	872.7
35	TOP BOX	863.2	52	CONCRETE REAL ESTATE	864.6	89	FL - Future Large Hangar	882.9
36	LENDIX HANGAR	863.2	53	CONCRETE REAL ESTATE	864.6	90	FL - Future Large Hangar	882.9
37	NORTH TEXAS AIRCRAFT SERVICES, INC.	863.2	54	INTERACT	876.4			



**LAYOUT PLAN LEGEND**

ITEM	EXISTING	FUTURE
BUILDING RESTRICTION LINE	---	---
AIRPORT PROPERTY LINE	---	---
FENCE	---	---
AVIGATION EASEMENT	---	---
RUNWAY PROTECTION ZONE	---	---
BUILDINGS	---	---
AIRFIELD PAVEMENT	---	---
FUEL STORAGE	---	---
BEACON	---	---
LIGHTED WIND CONE & SEGMENTED CIRCLE	---	---
PRECISION APPROACH PATH INDICATOR(PAPI)	---	---
RUNWAY END IDENTIFIER LIGHTS(REILS)	---	---

NOTE: THIS DRAWING SHOULD NOT BE USED AS A STANDARD FOR PLANNING OR DESIGN.

**ADDISON AIRPORT**  
ADDISON, TEXAS

**EAST AREA PLAN**

Barnard Dunkelberg & Company  
Tulsa, Oklahoma

FIGURE NUMBER:  

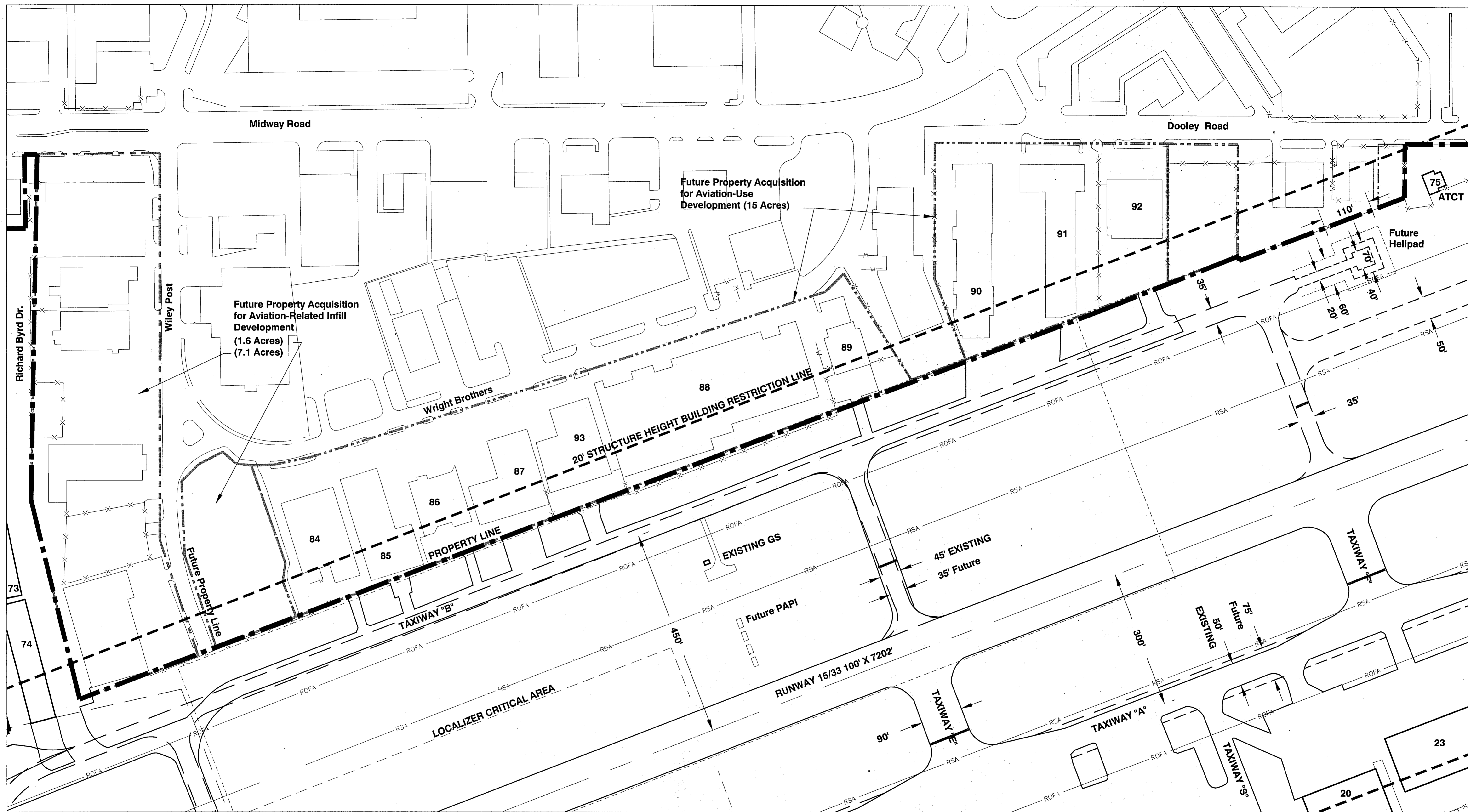
METRIC SCALE:  

SCALE: 1" = 100'

DATE: JUNE, 1997

DRAWING NUMBER: 6 OF 12





**TAXIWAY DIMENSIONAL STANDARDS**

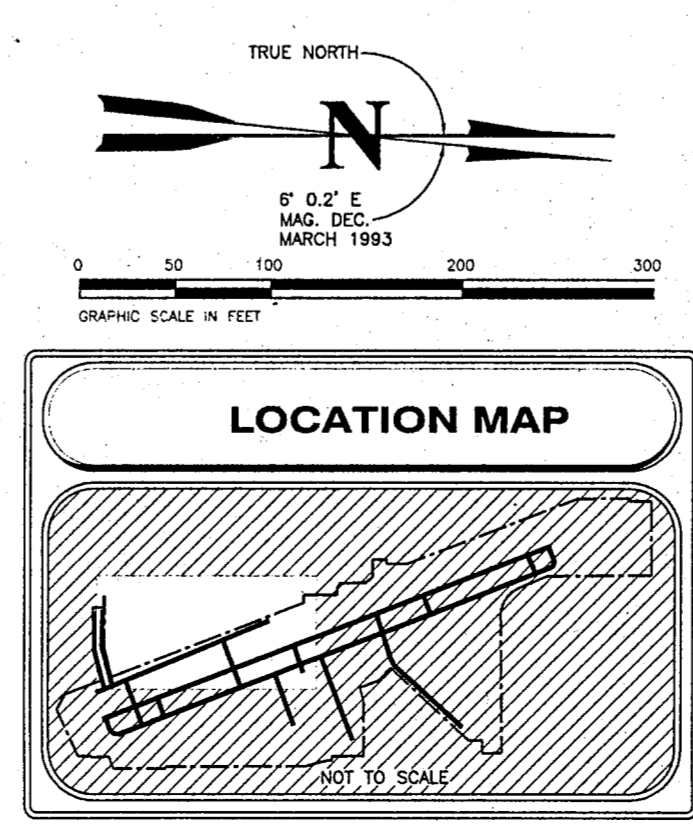
ITEM	AIRPLANE DESIGN GROUP	
	I	II
TAXIWAY WIDTH	25' [7.5m]	35' [10.5m]
TAXIWAY EDGE SAFETY MARGIN	5' [1.5m]	7.5' [2.25m]
TAXIWAY SHOULDER WIDTH	10' [3m]	10' [3m]
TAXIWAY SAFETY AREA WIDTH	49' [15m]	79' [24m]
TAXIWAY OBJECT FREE AREA WIDTH	89' [27m]	131' [40m]
TAXILANE OBJECT FREE AREA WIDTH	79' [24m]	115' [35m]

**BUILDING LEGEND**

#	TENANT OR OWNER	TOP ELEVATION
20	WALTER FULLER AIRCRAFT SALES/AIRCRAFT WELDING & SHEET METAL CO./GRUBBS AVIATION/SYNAPTIC AVIATION	868.8'
23	SIBER AIR	897.4'
73	CO-OP HANGAR B	854.4'
74	CO-OP HANGAR A	850.8'
75	AIR TRAFFIC CONTROL TOWER	887.8'
84	AIRTEX TOOL	864.2'
85	HONARD TRITCHELL	873.9'
86	RECON/KEITH THOMPSON	869.8'
87	J & W/FORESTRY AVIATION	877.9'
88	ENVIRO INDUSTRIES	873.8'
89	GARDNER ENGINEERING	874.8'
90	EXECUTIVE WEST/DELMO JOHNSON	876.1'
91	EXECUTIVE WEST/DELMO JOHNSON	877.2'
92	BELTWAY CONSTRUCTION	885.4'
93	BERRY, REYNOLDS, WILLIAMS HANGAR	872.2'

**REVISIONS**

No.	Date



**LAYOUT PLAN LEGEND**

ITEM	EXISTING	FUTURE
BUILDING RESTRICTION LINE	---	---
AIRPORT PROPERTY LINE	---	---
FENCE	---	---
AVIGATION EASEMENT	---	---
RUNWAY PROTECTION ZONE	---	---
BUILDINGS	---	---
AIRFIELD PAVEMENT	---	---
FUEL STORAGE	---	---
BEACON	---	---
LIGHTED WIND CONE & SEGMENTED CIRCLE	---	---
PRECISION APPROACH PATH INDICATOR(PAPI)	---	---
RUNWAY END IDENTIFIER LIGHTS(REILS)	---	---

NOTE: THIS DRAWING SHOULD NOT BE USED AS A STANDARD FOR PLANNING OR DESIGN.

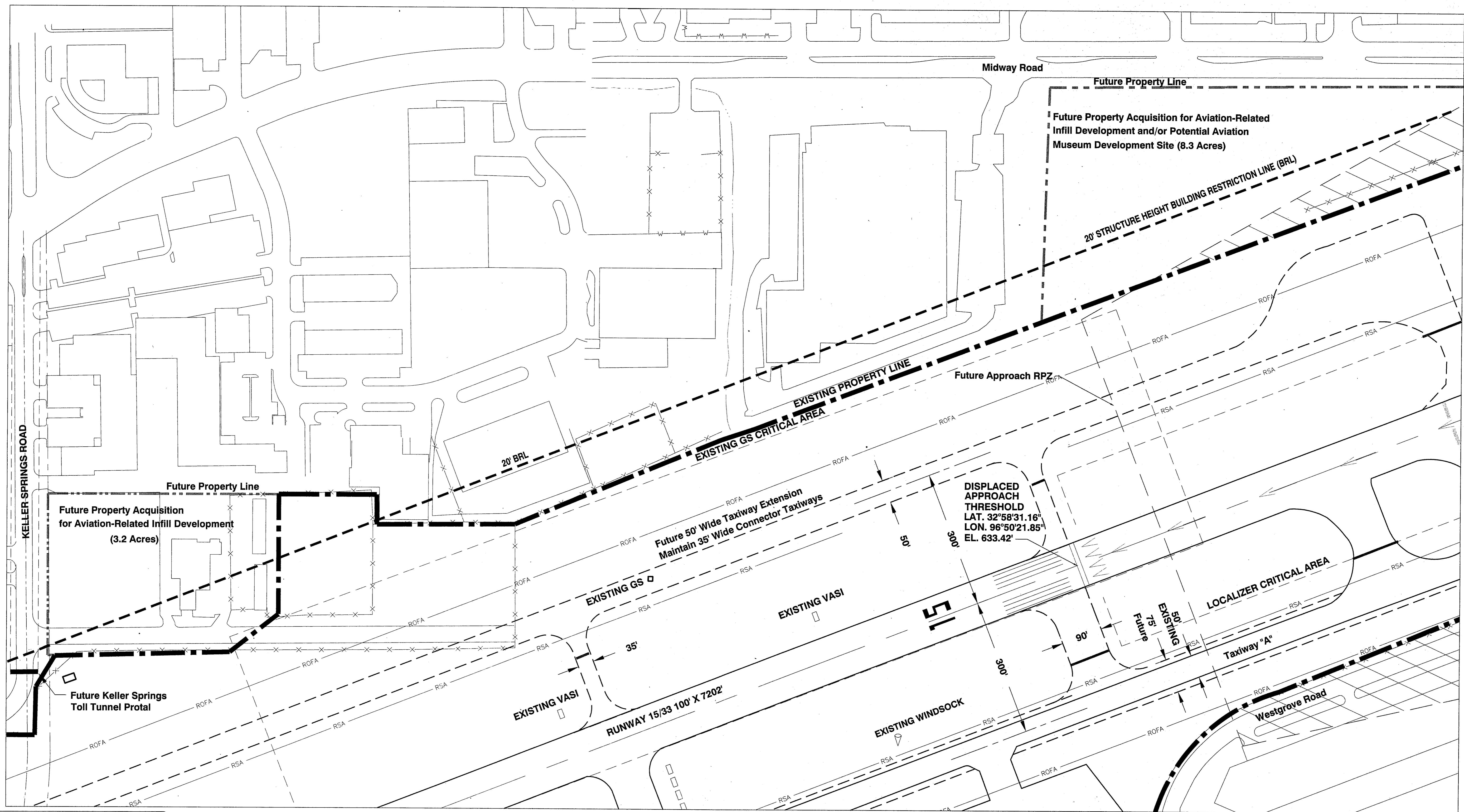
**ADDISON AIRPORT**  
ADDISON, TEXAS

**SOUTHWEST AREA PLAN**

**Barnard Dunkelberg & Company**  
Tulsa, Oklahoma

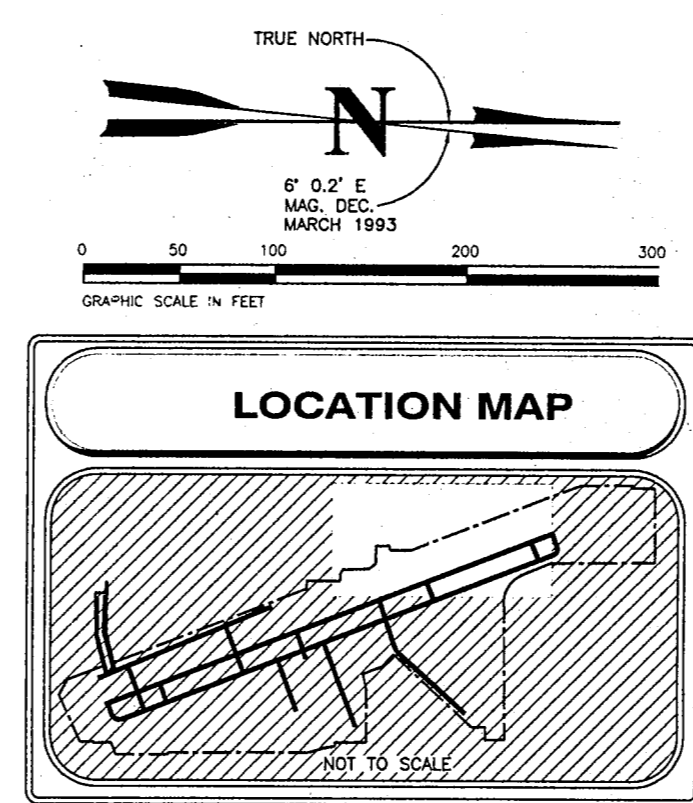
FIGURE NUMBER: \_\_\_\_\_  
METRIC SCALE: \_\_\_\_\_  
SCALE: 1" = 100'  
DATE: JUNE, 1997  
DRAWING NUMBER: 7 OF 12





TAXIWAY DIMENSIONAL STANDARDS		
ITEM	AIRPLANE DESIGN GROUP	
	I	II
TAXIWAY WIDTH	25' [7.5m]	35' [10.5m]
TAXIWAY EDGE SAFETY MARGIN	5' [1.5m]	7.5' [2.25m]
TAXIWAY SHOULDER WIDTH	10' [3m]	10' [3m]
TAXIWAY SAFETY AREA WIDTH	49' [15m]	79' [24m]
TAXIWAY OBJECT FREE AREA WIDTH	89' [27m]	131' [40m]
TAXILANE OBJECT FREE AREA WIDTH	79' [24m]	115' [35m]

REVISIONS	
No.	Date



LAYOUT PLAN LEGEND		
ITEM	EXISTING	FUTURE
BUILDING RESTRICTION LINE	---	- - - -
AIRPORT PROPERTY LINE	---	---
FENCE	---	---
AVIGATION EASEMENT	---	---
RUNWAY PROTECTION ZONE	---	---
BUILDINGS	---	---
AIRFIELD PAVEMENT	---	---
FUEL STORAGE	---	---
BEACON	⊙	⊙
LIGHTED WIND CONE & SEGMENTED CIRCLE	⊙	⊙
PRECISION APPROACH PATH INDICATOR (PAPI)	---	---
RUNWAY END IDENTIFIER LIGHTS (REILS)	•	•

NOTE: THIS DRAWING SHOULD NOT BE USED AS A STANDARD FOR PLANNING OR DESIGN.

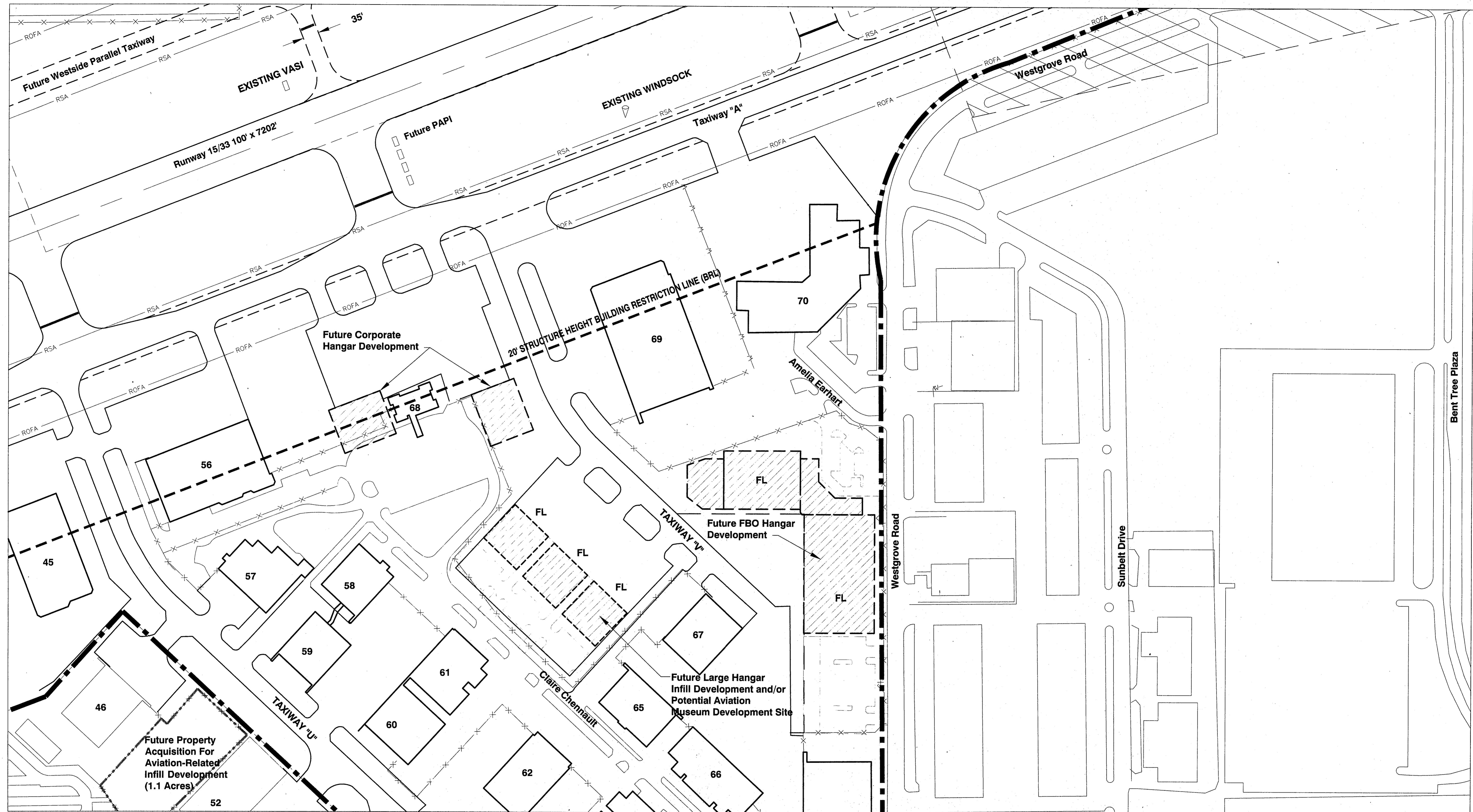
**ADDISON AIRPORT**  
ADDISON, TEXAS

**NORTHWEST AREA PLAN**

Barnard Dunkelberg & Company  
Tulsa, Oklahoma

FIGURE NUMBER	
METRIC SCALE	
SCALE	1" = 100'
DATE	JUNE, 1997
DRAWING NUMBER	8 OF 12





**TAXIWAY DIMENSIONAL STANDARDS**

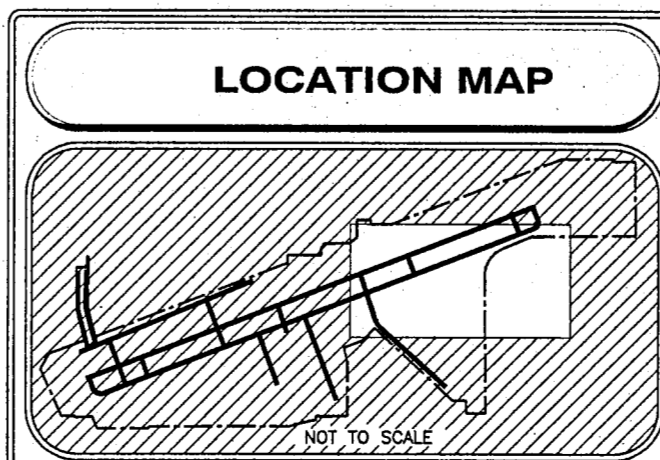
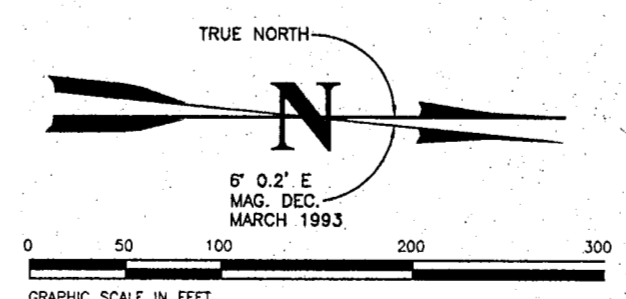
ITEM	AIRPLANE DESIGN GROUP	
	I	II
TAXIWAY WIDTH	25' [7.5m]	35' [10.5m]
TAXIWAY EDGE SAFETY MARGIN	5' [1.5m]	7.5' [2.25m]
TAXIWAY SHOULDER WIDTH	10' [3m]	10' [3m]
TAXIWAY SAFETY AREA WIDTH	49' [15m]	79' [24m]
TAXIWAY OBJECT FREE AREA WIDTH	89' [27m]	131' [40m]
TAXILANE OBJECT FREE AREA WIDTH	79' [24m]	115' [35m]

**BUILDING LEGEND**

# TENANT OR OWNER	TOP ELEVATION
45. MERCURY AIR SERVICES/INSTRUMENT SERVICES	873.8'
46. TOTTEN EDWARDS AIRCRAFT COMPANY	874.8'
52. CRESCENT REAL ESTATE	894.8'
56. EDA AIR SUPPORT	887.5'
57. KEITH PRODUCTS	886.7'
58. CHANAUGH FLIGHT MUSEUM	887.7'
59. CHANAUGH FLIGHT MUSEUM	886.5'
60. CHANAUGH FLIGHT MUSEUM	870.0'
61. CHANAUGH FLIGHT MUSEUM	870.0'
62. MONARCH AIR	875.8'
65. NETTE VASQUEZ	872.7'
66. REDWEN INDUSTRIES	882.9'
67. RODWELL	878.4'
68. ADDISON AIRPORT OF TEXAS INC.	884.8'
69. WILSON AIR/UNION STATE CUSTOMS OFFICE	878.4'
70. WILSON AIR/RECHONE	876.4'
FL. FUTURE LARGE HANGAR	

**REVISIONS**

No.	Date



**LAYOUT PLAN LEGEND**

ITEM	EXISTING	FUTURE
BUILDING RESTRICTION LINE	---	---BRL---
AIRPORT PROPERTY LINE	---	---
FENCE	---	---
AVIGATION EASEMENT	---	---
RUNWAY PROTECTION ZONE	---	---
BUILDINGS	---	---
AIRFIELD PAVEMENT	---	---
FUEL STORAGE	---	---
BEACON	⊙	⊙
LIGHTED WIND CONE & SEGMENTED CIRCLE	⊙	⊙
PRECISION APPROACH PATH INDICATOR(PAPI)	---	---
RUNWAY END IDENTIFIER LIGHTS(REILS)	•	•

NOTE: THIS DRAWING SHOULD NOT BE USED AS A STANDARD FOR PLANNING OR DESIGN.

**ADDISON AIRPORT**  
ADDISON, TEXAS

**NORTHEAST AREA PLAN**

**Barnard Dunkelberg & Company**  
Tulsa, Oklahoma

FIGURE NUMBER: \_\_\_\_\_

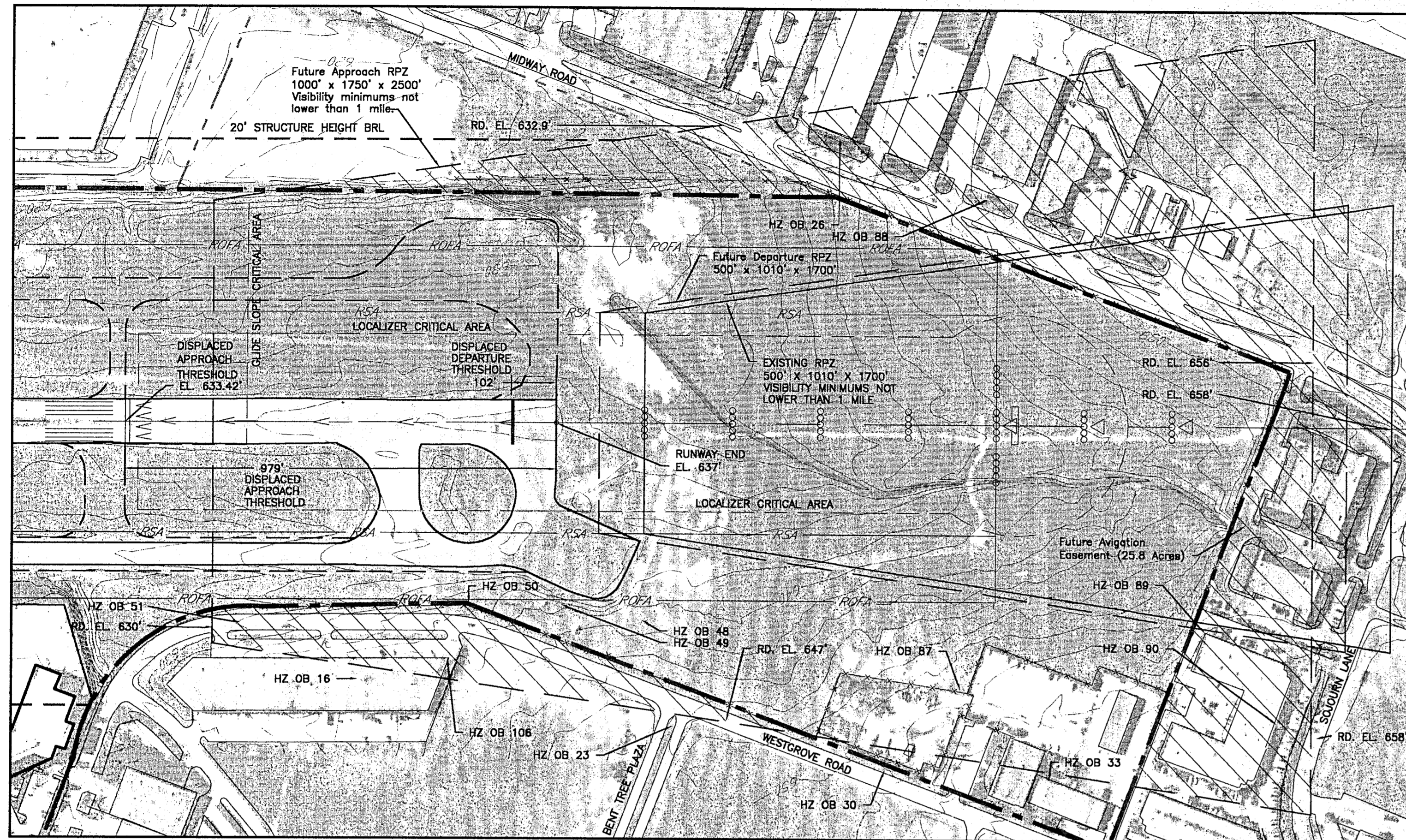
METRIC SCALE: \_\_\_\_\_

SCALE: 1" = 100'

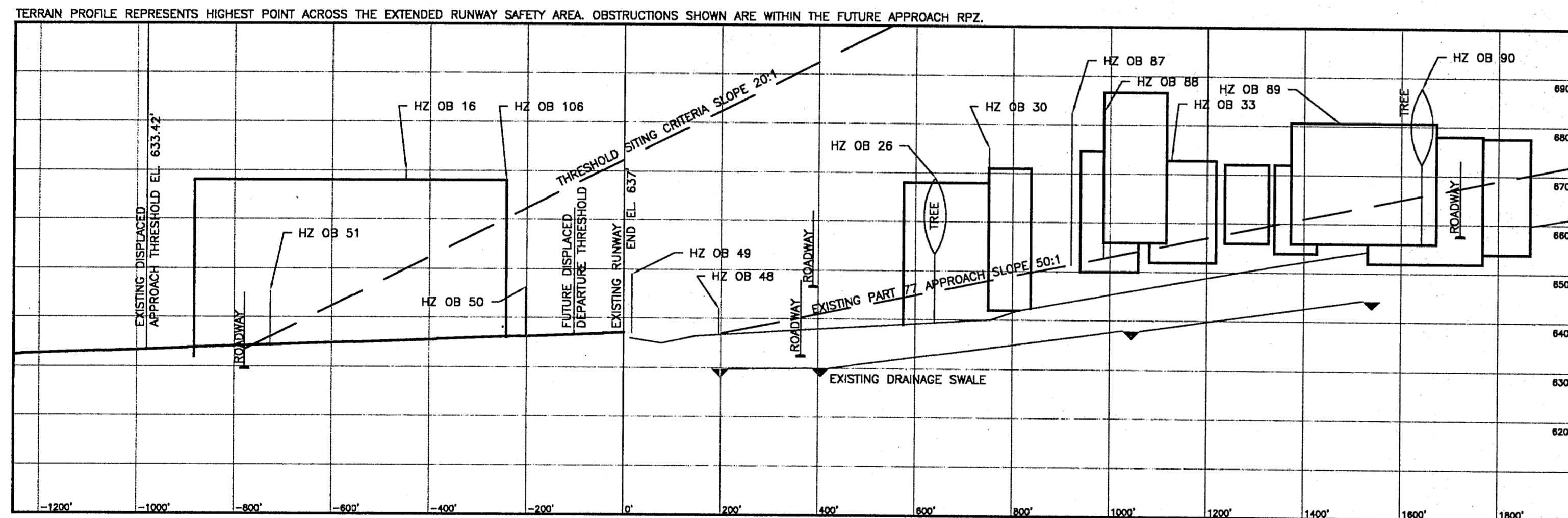
DATE: JUNE, 1997

DRAWING NUMBER: 9 OF 12

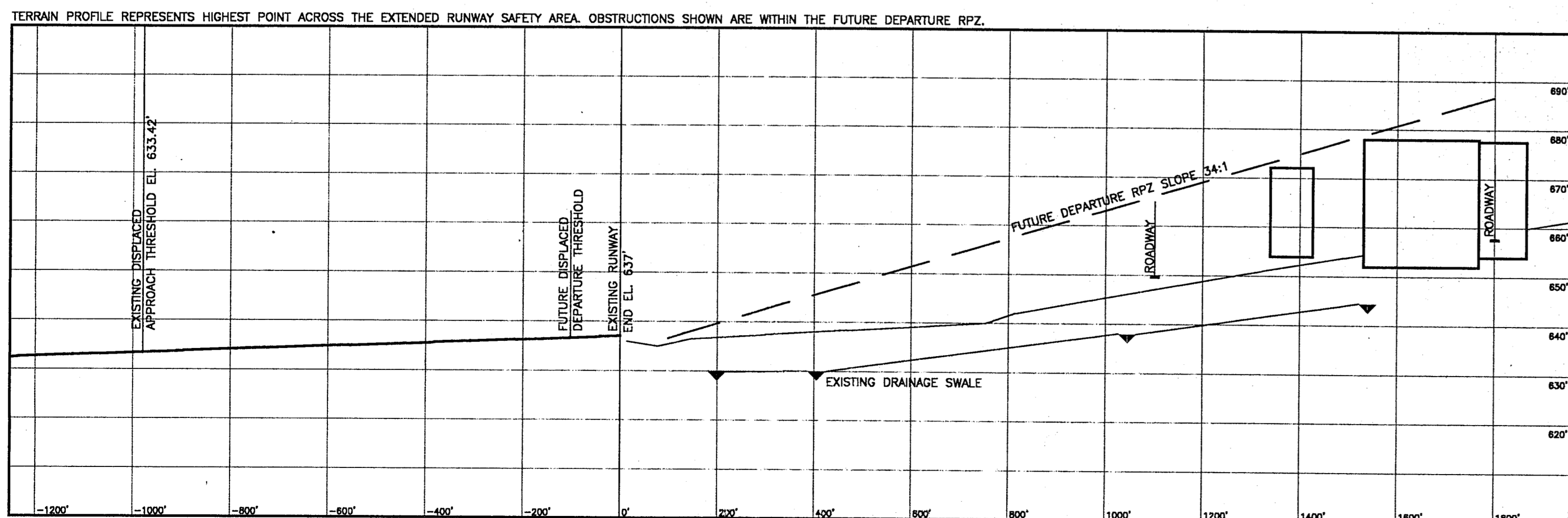




**RUNWAY 15 RPZ PLAN VIEW**  
1" = 200'



**RUNWAY 15 APPROACH RPZ PROFILE**  
1" = 200' HORIZONTALLY  
1" = 20' VERTICALLY



**RUNWAY 15 DEPARTURE RPZ PROFILE**  
1" = 200' HORIZONTALLY  
1" = 20' VERTICALLY

**FAR PART 77 OBSTRUCTIONS**

NO.	ITEM	PENETRATION	PART 77 SURFACE	DISPOSITION	NO.	ITEM	PENETRATION	PART 77 SURFACE	DISPOSITION	NO.	ITEM	PENETRATION	PART 77 SURFACE	DISPOSITION
					48	GROUND	5'	PRIMARY	NONE					
					49	LTD ELEC EQUIP	12'	PRIMARY	NONE					
					50	FENCE	10'	PRIMARY	NONE					
					51	ROAD (NON-INTERSTATE)	11'	PRIMARY	TO BE CLOSED					
16	VENT ON BLDG	21'	TRANSITIONAL	NONE										
23	LT POLE	14'	TRANSITIONAL	NONE										
26	TREE	13'	TRANSITIONAL	NONE	87	POLE	31'	RW15 APPROACH	NONE					
					88	FLG POLE	30'	RW15 APPROACH	NONE					
30	POLE	27'	TRANSITIONAL	NONE	89	BLDG	17'	RW15 APPROACH	NONE					
					90	TREE	21'	RW15 APPROACH	NONE	106	BLDG	18'	TRANSITIONAL	NONE
33	ANT ON BLDG	18'	TRANSITIONAL	NONE										

**REVISIONS**

No.	Date

NOTE: THIS DRAWING SHOULD NOT BE USED AS A STANDARD FOR PLANNING OR DESIGN.

**LAYOUT PLAN LEGEND**

ITEM	EXISTING	FUTURE
BUILDING RESTRICTION LINE	BRL	BRL
AIRPORT PROPERTY LINE	APL	APL
FENCE	F	F
AVIGATION EASEMENT	A	A
RUNWAY PROTECTION ZONE	R	R
BUILDINGS	B	B
AIRFIELD PAVEMENT	P	P
FUEL STORAGE	F	F
BEACON	+	+
LIGHTED WIND CONE & SEGMENTED CIRCLE	⊙	⊙
PRECISION APPROACH PATH INDICATOR (PAPI)	+	+
RUNWAY END IDENTIFIER LIGHTS (REILS)	•	•

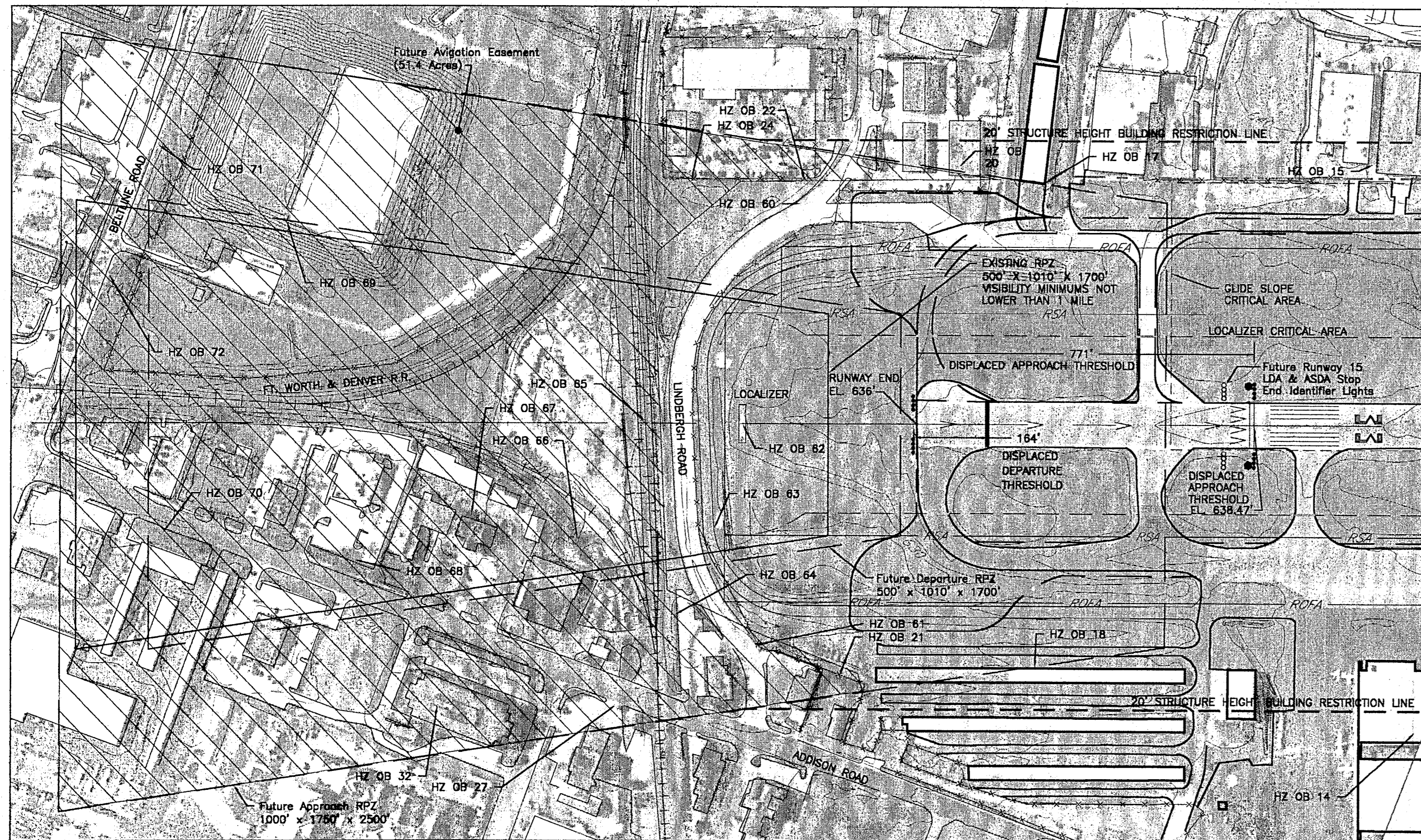
**ADDISON AIRPORT**  
ADDISON, TEXAS

**RUNWAY 15**  
INNER PORTION OF THE APPROACH SURFACE DRAWING

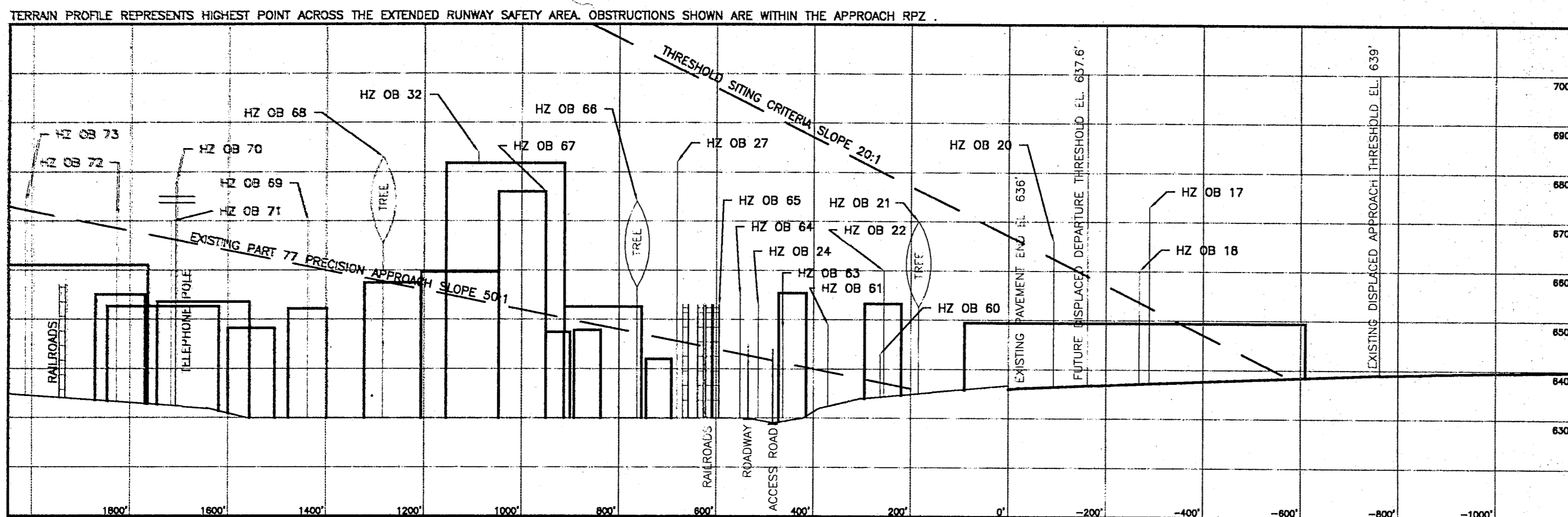
**Barnard Dunkelberg & Company**  
Tulsa, Oklahoma

FIGURE NUMBER  
METRIC SCALE  
SCALE  
1" = 200'  
DATE  
JUNE, 1997  
DRAWING NUMBER  
10 OF 12

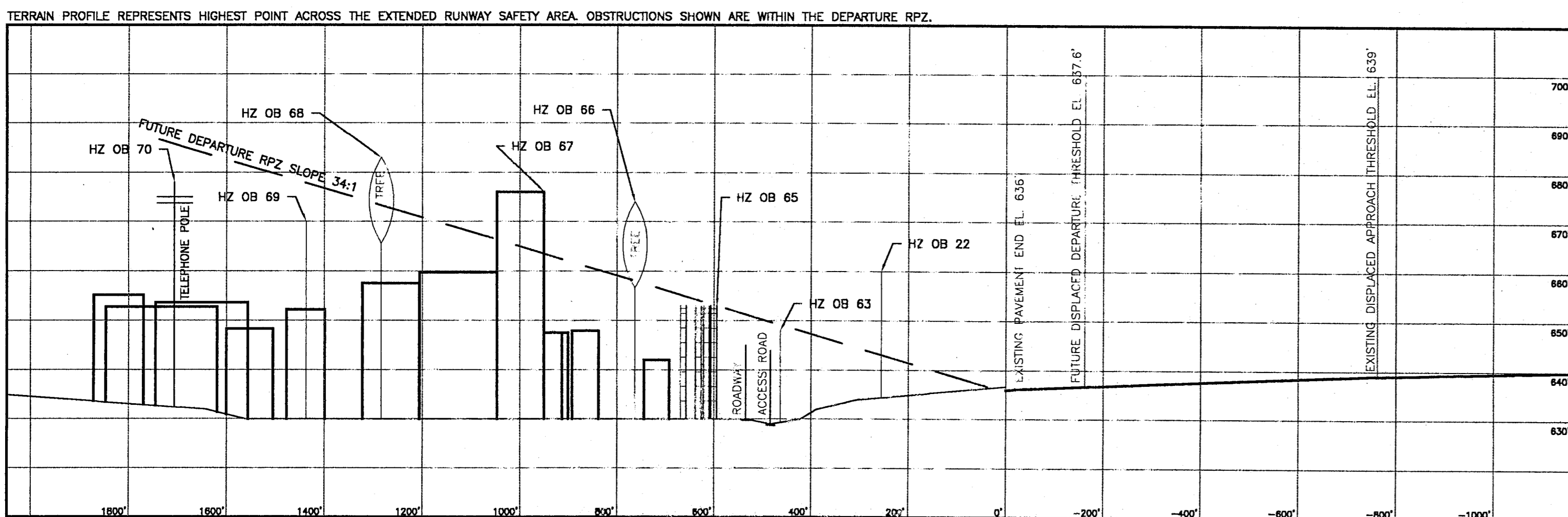




**RUNWAY 33 RPZ PLAN VIEW**  
1" = 200'



**RUNWAY 33 APPROACH RPZ PROFILE**  
1" = 200' HORIZONTALLY  
1" = 20' VERTICALLY



**RUNWAY 33 DEPARTURE RPZ PROFILE**  
1" = 200' HORIZONTALLY  
1" = 20' VERTICALLY

**FAR PART 77 OBSTRUCTIONS**

NO.	ITEM	PENETRATION	PART 77 SURFACE	DISPOSITION	NO.	ITEM	PENETRATION	PART 77 SURFACE	DISPOSITION	NO.	ITEM	PENETRATION	PART 77 SURFACE	DISPOSITION
					32	ANT ON OL BLDG	30'	TRANSITIONAL	NONE	63	ROD ON OL DME	7'	RW33 APPROACH	NONE
										64	POLE	12'	RW33 APPROACH	NONE
										65	RAILROAD	11'	RW33 APPROACH	NONE
										66	TREE	27'	RW33 APPROACH	TO BE TRIMMED OR REMOVED
14	ROD ON OL HANGAR	55'	TRANSITIONAL	NONE						67	BLDG	24'	RW33 APPROACH	TO BE REMOVED
15	POLE	25'	TRANSITIONAL	NONE						68	TREE	26'	RW33 APPROACH	TO BE TRIMMED OR REMOVED
17	POLE	20'	TRANSITIONAL	TO BE TRIMMED/ OR REMOVED/ OR TO BE TRIMMED/ OR REMOVED/						69	OL ON LT POLE	10'	RW33 APPROACH	NONE
18	POLE	17'	TRANSITIONAL	NONE						70	POLE	12'	RW33 APPROACH	NONE
										71	POLE	4'	RW33 APPROACH	NONE
20	ANT ON BLDG	8'	TRANSITIONAL	NONE						72	POLE	3'	RW33 APPROACH	NONE
21	TREE	25'	TRANSITIONAL	NONE										
22	POLE	7'	TRANSITIONAL	NONE										
24	POLE	11'	TRANSITIONAL	NONE	60	ROAD (NON-INTERSTATE)	6'	RW33 APPROACH	NONE					
27	POLE	28'	TRANSITIONAL	NONE	61	POLE	10'	RW33 APPROACH	NONE					
					62	OL ON LOC	NONE (-1')	RW33 APPROACH	NONE					

**REVISIONS**

No.	Date

NOTE: THIS DRAWING SHOULD NOT BE USED AS A STANDARD FOR PLANNING OR DESIGN.

**LAYOUT PLAN LEGEND**

ITEM	EXISTING	FUTURE
BUILDING RESTRICTION LINE	—	—
AIRPORT PROPERTY LINE	—	—
FENCE	—	—
AVIGATION EASEMENT	—	—
RUNWAY PROTECTION ZONE	—	—
BUILDINGS	—	—
AIRFIELD PAVEMENT	—	—
FUEL STORAGE	⊙	⊙
BEACON	*	*
LIGHTED WIND CONE & SEGMENTED CIRCLE	⊙	⊙
PRECISION APPROACH PATH INDICATOR(PAPI)	—	—
RUNWAY END IDENTIFIER LIGHTS(REILS)	•	•

**ADDISON AIRPORT**  
ADDISON, TEXAS

**RUNWAY 33**  
INNER PORTION OF THE APPROACH SURFACE DRAWING

**Barnard Dunkelberg & Company**  
Tulsa, Oklahoma

FIGURE NUMBER

METRIC SCALE

SCALE  
1" = 200'

DATE  
JUNE, 1997

DRAWING NUMBER  
11 OF 12

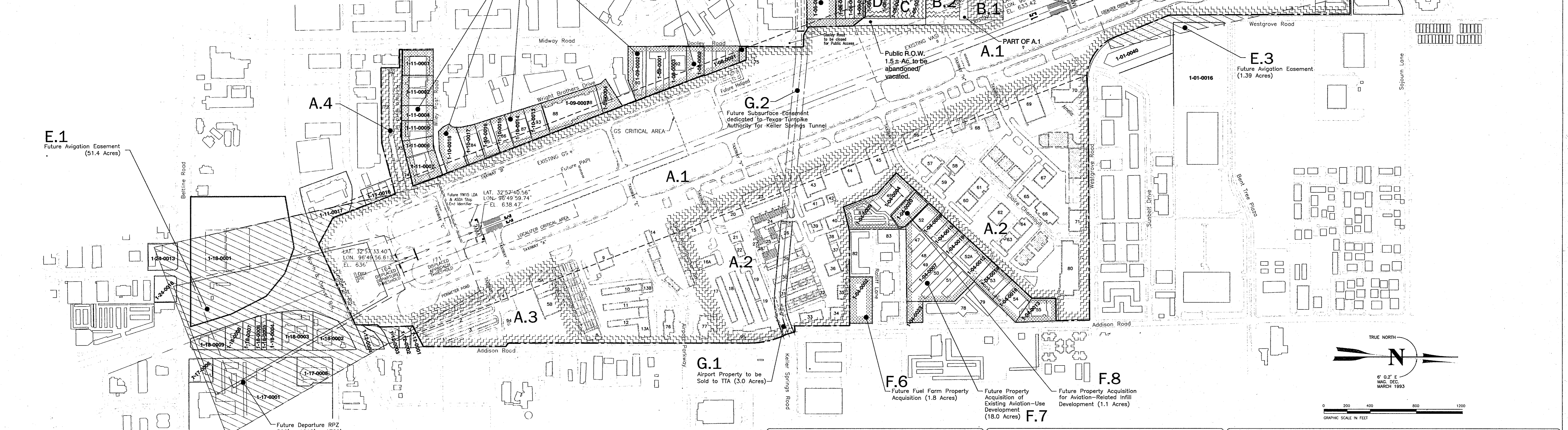


LAND PARCEL DATA						
TRACT NO.	OWNER	INTEREST	PROJECT NO./INST. OF TRANSFER	DALLAS CO. REC. DEED	DATE	ACRES
A.1	ADDISON AIRPORT	FEE SIMPLE	ADAP# 5-48-0063-01	VOL. 77010 PG. 1391	8/21/76	250.0
A.2	ADDISON AIRPORT	FEE SIMPLE	ADAP# 5-48-0063-02	VOL. 77010 PG. 1391	8/21/76	96.0
A.3	ADDISON AIRPORT	FEE SIMPLE	ADAP# 5-48-0063-02	VOL. 77010 PG. 1391	8/21/76	14.2
A.4	ADDISON AIRPORT	FEE SIMPLE	ADAP# 5-48-0063-02	VOL. 77010 PG. 1391	8/21/76	4.14
B.1	ADDISON AIRPORT	FEE SIMPLE	ADAP# 5-48-0063-03	VOL. 91079 PG. 2687	9/9/80	1.0
B.2	ADDISON AIRPORT	FEE SIMPLE	ADAP# 5-48-0063-04	VOL. 82022 PG. 1211	12/28/93	2.69
C	WILLIAM CHESTER (ADDISON AIRPORT)	FEE SIMPLE (ACQUISITION PENDING)	MP# 5-48-0063-08-96			1.5
D	PROTECT-A-CAB (ADDISON AIRPORT)	FEE SIMPLE (ACQUISITION PENDING)	MP# 5-48-0063-08-96			1.5
TOTAL FEE SIMPLE						APPROX. 371.03
E.1 (*)	1-18-0001 METRO BRICK	FUTURE AVIGATION EASEMENT				19.01
	1-18-0002 CAR WASH PROPERTIES	FUTURE AVIGATION EASEMENT				1.57
	1-18-0003 CAR WASH PROPERTIES	FUTURE AVIGATION EASEMENT				1.87
	1-18-0004 SAM DORFMAN	FUTURE AVIGATION EASEMENT				0.991
	1-18-0005 SAM DORFMAN	FUTURE AVIGATION EASEMENT				0.315
	1-18-0006	FUTURE AVIGATION EASEMENT				0.378
	1-18-0007 FILLING STATION OF ADDISON	FUTURE AVIGATION EASEMENT				0.612
	1-18-0008 JAMES E. SAULS	FUTURE AVIGATION EASEMENT				0.775
	1-18-0009 GARTNER PLANO CO ET AL	FUTURE AVIGATION EASEMENT				1.048
	1-11-0017 BANKSTON & BANKSTON	FUTURE AVIGATION EASEMENT				3.5340
	1-11-0016 JOHNSON ELECTRIC	FUTURE AVIGATION EASEMENT				0.897
	1-12-0001	FUTURE AVIGATION EASEMENT				APPROX. 0.1
	1-12-0002 WHITE ROCK MASONIC	FUTURE AVIGATION EASEMENT				0.379
	1-12-0003 ADDISON POST OFFICE JV	FUTURE AVIGATION EASEMENT				0.417
	1-12-0004 GEORGE KONDOS	FUTURE AVIGATION EASEMENT				0.6126
	1-17-0001 ADDISON SOUTHWEST LTD	FUTURE AVIGATION EASEMENT				24.6278
	1-17-0006 MARK A. ALBERT TR ET AL	FUTURE AVIGATION EASEMENT				0.913
	1-17-0008 QUORUM CENTER LTD PS	FUTURE AVIGATION EASEMENT				1.7277
	1-24-0013 WORRELL INVESTMENTS	FUTURE AVIGATION EASEMENT				1.274
	1-24-0018 SHARON ANNE LAVINE	FUTURE AVIGATION EASEMENT				0.9587
	ROADWAY & RAILROAD EASEMENTS	FUTURE AVIGATION EASEMENT				APPROX. 14.9
E.2 (**)	PROPERTY WITHIN CITY OF CARROLLTON	FUTURE AVIGATION EASEMENT				APPROX. 23.5
E.3 (**)	1-01-0040 VINCENT STAGLIANO	FUTURE AVIGATION EASEMENT				APPROX. 0.84
	1-01-0016 FM PROPERTIES	FUTURE AVIGATION EASEMENT				APPROX. 0.56

FUTURE LAND PARCEL DATA						
TRACT NO.	OWNER	INTEREST	PROJECT NO./INST. OF TRANSFER	DATE	ACRES	
F.1	1-11-0001 FOREST WAY CORP.	FUTURE FEE SIMPLE			1.436	
	1-11-0002, 0004 WILEY POST J.V.	FUTURE FEE SIMPLE			1.6, 0.8	
	1-11-0005, 0006 LATASTE ENTERPRISE	FUTURE FEE SIMPLE			0.94, 0.82	
	1-11-0007 MARY LOIS BUCE	FUTURE FEE SIMPLE			1.445	
	1-10-0018 E. ALLEN STOCKTON	FUTURE FEE SIMPLE			1.51	
F.2	1-08-0002 GEORGE KONDOS	FUTURE FEE SIMPLE			0.9416	
F.3	1-08-0001 GEORGE MARKOS	FUTURE FEE SIMPLE			APPROX. 0.2	
F.4	1-06-0013 TEXAS TURNPIKE AUTHORITY	FUTURE FEE SIMPLE			1.7248	
	1-06-0009, 0010 BILLY J. MULLINS JR.	FUTURE FEE SIMPLE			0.5002, 0.5020	
	1-06-0008 ROY V. KINCAID JR.	FUTURE FEE SIMPLE			0.5000	

FUTURE LAND PARCEL DATA						
TRACT NO.	OWNER	INTEREST	PROJECT NO./INST. OF TRANSFER	DATE	ACRES	
F.5	1-06-0039-1 S & B INVESTMENTS	FUTURE FEE SIMPLE			5.6424	
	1-06-0001 BELWOOD NORTH VENTURE	FUTURE FEE SIMPLE			2.7323	
F.6	1-04-0002 ROBERT RUNDINE	FUTURE FEE SIMPLE			1.76	

REVISIONS		
No.	Description	Date



FUTURE LAND PARCEL DATA						
TRACT NO.	OWNER	INTEREST	PROJECT NO.	DATE	ACRES	
F.7	1-04-0004 AIRPORT LAND DEVELOPMENT	FUTURE FEE SIMPLE			1.861	
	1-04-0007 EDDINS ENTERPRISES	FUTURE FEE SIMPLE			4.6896	
	1-04-0008 METROPORT REALTY	FUTURE FEE SIMPLE			2.9433	
	1-04-0009 ADDISON LOCKERS	FUTURE FEE SIMPLE			1.95	
	1-04-0012 HOME INTERIORS AND GIFTS	FUTURE FEE SIMPLE			1.20	
	1-04-0013 ITEX ENVIRONMENTAL SVCS.	FUTURE FEE SIMPLE			1.3025	
	1-04-0014 METROPORT REALTY	FUTURE FEE SIMPLE			1.1428	
	1-04-0015 METROPORT REALTY	FUTURE FEE SIMPLE			0.61	
	1-04-0016 EDDINS ENTERPRISES	FUTURE FEE SIMPLE			1.0624	
	1-04-0019 CARTER CROWLEY PROPERTIES	FUTURE FEE SIMPLE			0.76	
	1-04-0023 CARTER CROWLEY PROPERTIES	FUTURE FEE SIMPLE			0.6158	

FUTURE LAND PARCEL DATA						
TRACT NO.	OWNER	INTEREST	PROJECT NO.	DATE	ACRES	
F.8	1-04-0020 AIRPORT LAND DEVELOPMENT	FUTURE FEE SIMPLE			1.11	
F.9	1-10-0017 C. ALLEN STOCKTON	FUTURE FEE SIMPLE			1.189	
	1-10-0016 C. SCOTT TWITCHELL	FUTURE FEE SIMPLE			0.976	
	1-10-0015 C. KEITH THOMPSON	FUTURE FEE SIMPLE			0.889	
	1-10-0014 H. G. WESTERMAN	FUTURE FEE SIMPLE			1.04	
	1-10-0013 BARRY REYNOLDS WILLIAMS	FUTURE FEE SIMPLE			1.001	
	1-10-0005, 6, 7 J & R JOINT VENTURE	FUTURE FEE SIMPLE			2.842	
	1-09-0004 SANDY CLARK	FUTURE FEE SIMPLE			0.8581	
	1-09-0032 CHARLES W. CULWELL	FUTURE FEE SIMPLE			1.704	
	1-09-0001 JOHN MAC JOINT VENTURE	FUTURE FEE SIMPLE			1.584	
	1-08-0003 BELTWAY DEVELOPMENT	FUTURE FEE SIMPLE			1.1372	
	1-08-0001 GEORGE MARKOS	FUTURE FEE SIMPLE			1.5637	
FUTURE TOTAL					423.577	
G.1 (***)	ADDISON AIRPORT	TO BE RELEASED TO TTA			APPROX. 3.0	
G.2 (***)	ADDISON AIRPORT	SUBSURFACE EASEMENT			APPROX. 4.5	

AIRPORT DATA			
ITEM	EXISTING	FUTURE	
AIRPORT ELEVATION (AMSL)	644'	644'	
AIRPORT REFERENCE POINT (ARP)	LAT. 32° 58' 06.81" N LONG. 96° 50' 11.21" W	LAT. 32° 58' 06.81" N LONG. 96° 50' 11.21" W	
MEAN MAX. TEMP. HOTTEST MONTH	96.1°F	96.1°F	
AIRPORT PROPERTY (ACRES)	368	424	
UNICOM (MHz)	122.950	122.950	
NIPAS CATEGORY	RELEVER	RELEVER	
CONTROL TOWER (MHz)	126.0	126.0	

LAYOUT PLAN LEGEND			
ITEM	EXISTING	FUTURE	
BUILDING RESTRICTION LINE	BRL	BRL	
AIRPORT PROPERTY LINE	APL	APL	
FENCE	F	F	
AVIGATION EASEMENT	AE	AE	
RUNWAY PROTECTION ZONE	RPZ	RPZ	
BUILDINGS	B	B	
AIRFIELD PAVEMENT	AP	AP	
FUEL STORAGE	FS	FS	
ROTATING BEACON	RB	RB	
LIGHTED WIND CONE & SEGMENTED CIRCLE	LWC/SC	LWC/SC	
PRECISION APPROACH PATH INDICATOR (PAPI)	PAPI	PAPI	
RUNWAY END IDENTIFIER LIGHTS (REILS)	REILS	REILS	
VISUAL APPROACH SLOPE INDICATOR (VASI)	VASI	VASI	
THRESHOLD LIGHTS (DISPLACED THRESHOLD LIGHTS)	TL	TL	
HELICOPTER TOUCHDOWN AND LIFT-OFF AREA (TLOF)	TLOF	TLOF	
WINDCONE	WC	WC	

NOTE: 1. THIS DRAWING SHOULD NOT BE USED AS A STANDARD FOR PLANNING OR DESIGN.  
 2. BASE MAP PROVIDED BY AERIAL DATA SERVICE, TULSA, OKLAHOMA (SEPT. 1995).  
 3. MAGNETIC DECLINATION TAKEN FROM 1993 AIRPORT LAYOUT PLAN BY GREENER, INC., FORT WORTH, TEXAS.  
 4. HORIZONTAL COORDINATE DATUM IS BASED ON NAD83.  
 5. RUNWAY THRESHOLD LAT/LONG INFORMATION TAKEN FROM DC 768 ADDISON AIRPORT, DALLAS, TEXAS (DEC. 1993).  
 6. REFER TO RUNWAY PROTECTION ZONE (RPZ) PLAN & PROFILE DRAWINGS FOR ROADWAY/RAILROAD CLEARANCE INFORMATION.

**ADDISON AIRPORT**  
ADDISON, TEXAS

**AIRPORT PROPERTY MAP**  
**EXHIBIT 'A'**

**Barnard Dunkelberg & Company**  
Tulsa, Oklahoma

FIGURE NUMBER

METRIC SCALE

SCALE  
1" = 400'

DATE  
NOVEMBER, 1997

DRAWING NUMBER  
12 OF 12