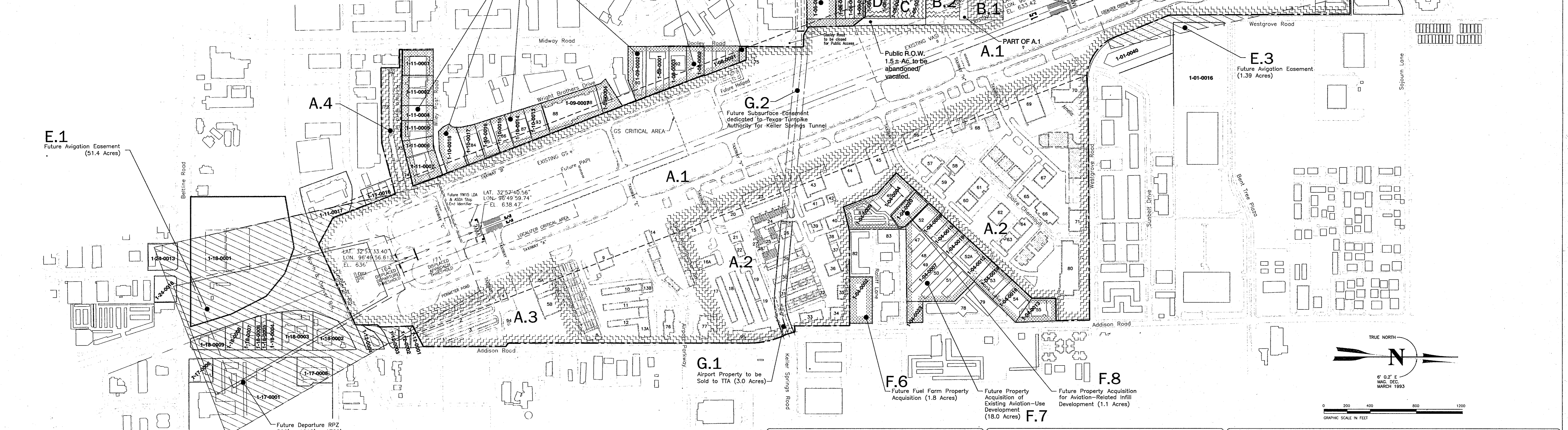


LAND PARCEL DATA						
TRACT NO.	OWNER	INTEREST	PROJECT NO./INST. OF TRANSFER	DALLAS CO. REC. DEED	DATE	ACRES
A.1	ADDISON AIRPORT	FEE SIMPLE	ADAP# 5-48-0063-01	VOL. 77010 PG. 1391	8/21/76	250.0
A.2	ADDISON AIRPORT	FEE SIMPLE	ADAP# 5-48-0063-02	VOL. 77010 PG. 1391	8/21/76	96.0
A.3	ADDISON AIRPORT	FEE SIMPLE	ADAP# 5-48-0063-02	VOL. 77010 PG. 1391	8/21/76	14.2
A.4	ADDISON AIRPORT	FEE SIMPLE	ADAP# 5-48-0063-02	VOL. 77010 PG. 1391	8/21/76	4.14
B.1	ADDISON AIRPORT	FEE SIMPLE	ADAP# 5-48-0063-03	VOL. 91079 PG. 2687	9/9/80	1.0
B.2	ADDISON AIRPORT	FEE SIMPLE	ADAP# 5-48-0063-04	VOL. 82022 PG. 1211	12/28/93	2.69
C	WILLIAM CHESTER (ADDISON AIRPORT)	FEE SIMPLE (ACQUISITION PENDING)	MP# 5-48-0063-08-96			1.5
D	PROTECT-A-CAB (ADDISON AIRPORT)	FEE SIMPLE (ACQUISITION PENDING)	MP# 5-48-0063-08-96			1.5
TOTAL FEE SIMPLE						APPROX. 371.03
E.1 (*)	1-18-0001 METRO BRICK	FUTURE AVIGATION EASEMENT				19.01
	1-18-0002 CAR WASH PROPERTIES	FUTURE AVIGATION EASEMENT				1.57
	1-18-0003 CAR WASH PROPERTIES	FUTURE AVIGATION EASEMENT				1.87
	1-18-0004 SAM DORFMAN	FUTURE AVIGATION EASEMENT				0.991
	1-18-0005 SAM DORFMAN	FUTURE AVIGATION EASEMENT				0.315
	1-18-0006	FUTURE AVIGATION EASEMENT				0.378
	1-18-0007 FILLING STATION OF ADDISON	FUTURE AVIGATION EASEMENT				0.612
	1-18-0008 JAMES E. SAULS	FUTURE AVIGATION EASEMENT				0.775
	1-18-0009 GARTNER PLANO CO ET AL	FUTURE AVIGATION EASEMENT				1.048
	1-11-0017 BANKSTON & BANKSTON	FUTURE AVIGATION EASEMENT				3.5340
	1-11-0016 JOHNSON ELECTRIC	FUTURE AVIGATION EASEMENT				0.897
	1-12-0001	FUTURE AVIGATION EASEMENT				APPROX. 0.1
	1-12-0002 WHITE ROCK MASONIC	FUTURE AVIGATION EASEMENT				0.379
	1-12-0003 ADDISON POST OFFICE JV	FUTURE AVIGATION EASEMENT				0.417
	1-12-0004 GEORGE KONDOS	FUTURE AVIGATION EASEMENT				0.6126
	1-17-0001 ADDISON SOUTHWEST LTD	FUTURE AVIGATION EASEMENT				24.6278
	1-17-0006 MARK A. ALBERT TR ET AL	FUTURE AVIGATION EASEMENT				0.913
	1-17-0008 QUORUM CENTER LTD PS	FUTURE AVIGATION EASEMENT				1.7277
	1-24-0013 WORRELL INVESTMENTS	FUTURE AVIGATION EASEMENT				1.274
	1-24-0018 SHARON ANNE LAVINE	FUTURE AVIGATION EASEMENT				0.9587
	ROADWAY & RAILROAD EASEMENTS	FUTURE AVIGATION EASEMENT				APPROX. 14.9
E.2 (**)	PROPERTY WITHIN CITY OF CARROLLTON	FUTURE AVIGATION EASEMENT				APPROX. 23.5
E.3 (**)	1-01-0040 VINCENT STAGLIANO	FUTURE AVIGATION EASEMENT				APPROX. 0.84
	1-01-0016 FM PROPERTIES	FUTURE AVIGATION EASEMENT				APPROX. 0.56

FUTURE LAND PARCEL DATA						
TRACT NO.	OWNER	INTEREST	PROJECT NO./INST. OF TRANSFER	DATE	ACRES	
F.1	1-11-0001 FOREST WAY CORP.	FUTURE FEE SIMPLE			1.436	
	1-11-0002, 0004 WILEY POST J.V.	FUTURE FEE SIMPLE			1.6, 0.8	
	1-11-0005, 0006 LATASTE ENTERPRISE	FUTURE FEE SIMPLE			0.94, 0.82	
	1-11-0007 MARY LOIS BUCE	FUTURE FEE SIMPLE			1.445	
	1-10-0018 E. ALLEN STOCKTON	FUTURE FEE SIMPLE			1.51	
F.2	1-08-0002 GEORGE KONDOS	FUTURE FEE SIMPLE			0.9416	
F.3	1-08-0001 GEORGE MARKOS	FUTURE FEE SIMPLE			APPROX. 0.2	
F.4	1-06-0013 TEXAS TURNPIKE AUTHORITY	FUTURE FEE SIMPLE			1.7248	
	1-06-0009, 0010 BILLY J. MULLINS JR.	FUTURE FEE SIMPLE			0.5002, 0.5020	
	1-06-0008 ROY V. KINCAID JR.	FUTURE FEE SIMPLE			0.5000	

FUTURE LAND PARCEL DATA						
TRACT NO.	OWNER	INTEREST	PROJECT NO./INST. OF TRANSFER	DATE	ACRES	
F.5	1-06-0039-1 S & B INVESTMENTS	FUTURE FEE SIMPLE			5.6424	
	1-06-0001 BELWOOD NORTH VENTURE	FUTURE FEE SIMPLE			2.7323	
F.6	1-04-0002 ROBERT RUNDINE	FUTURE FEE SIMPLE			1.76	

REVISIONS		
No.	Description	Date



FUTURE LAND PARCEL DATA						
TRACT NO.	OWNER	INTEREST	PROJECT NO.	DATE	ACRES	
F.7	1-04-0004 AIRPORT LAND DEVELOPMENT	FUTURE FEE SIMPLE			1.861	
	1-04-0007 EDDINS ENTERPRISES	FUTURE FEE SIMPLE			4.6896	
	1-04-0008 METROPORT REALTY	FUTURE FEE SIMPLE			2.9433	
	1-04-0009 ADDISON LOCKERS	FUTURE FEE SIMPLE			1.95	
	1-04-0012 HOME INTERIORS AND GIFTS	FUTURE FEE SIMPLE			1.20	
	1-04-0013 ITEX ENVIRONMENTAL SVCS.	FUTURE FEE SIMPLE			1.3025	
	1-04-0014 METROPORT REALTY	FUTURE FEE SIMPLE			1.4278	
	1-04-0015 METROPORT REALTY	FUTURE FEE SIMPLE			0.61	
	1-04-0016 EDDINS ENTERPRISES	FUTURE FEE SIMPLE			1.0624	
	1-04-0019 CARTER CROWLEY PROPERTIES	FUTURE FEE SIMPLE			0.76	
	1-04-0023 CARTER CROWLEY PROPERTIES	FUTURE FEE SIMPLE			0.6158	

FUTURE LAND PARCEL DATA						
TRACT NO.	OWNER	INTEREST	PROJECT NO.	DATE	ACRES	
F.8	1-04-0020 AIRPORT LAND DEVELOPMENT	FUTURE FEE SIMPLE			1.11	
F.9	1-10-0017 C. ALLEN STOCKTON	FUTURE FEE SIMPLE			1.189	
	1-10-0016 C. SCOTT TWITCHELL	FUTURE FEE SIMPLE			0.976	
	1-10-0015 C. KEITH THOMPSON	FUTURE FEE SIMPLE			0.889	
	1-10-0014 H. G. WESTERMAN	FUTURE FEE SIMPLE			1.04	
	1-10-0013 BARRY REYNOLDS WILLIAMS	FUTURE FEE SIMPLE			1.001	
	1-10-0005, 6, 7 J & R JOINT VENTURE	FUTURE FEE SIMPLE			2.842	
	1-09-0004 SANDY CLARK	FUTURE FEE SIMPLE			0.8581	
	1-09-0032 CHARLES W. CULWELL	FUTURE FEE SIMPLE			1.704	
	1-09-0001 JOHN MAC JOINT VENTURE	FUTURE FEE SIMPLE			1.584	
	1-08-0003 BELTWAY DEVELOPMENT	FUTURE FEE SIMPLE			1.1372	
	1-08-0001 GEORGE MARKOS	FUTURE FEE SIMPLE			1.5637	
FUTURE TOTAL					423.577	
G.1 (***)	ADDISON AIRPORT	TO BE RELEASED TO TTA			APPROX. 3.0	
G.2 (***)	ADDISON AIRPORT	SUBSURFACE EASEMENT			APPROX. 4.5	

AIRPORT DATA			
ITEM	EXISTING	FUTURE	
AIRPORT ELEVATION (AMSL)	644'	644'	
AIRPORT REFERENCE POINT (ARP)	LAT. 32° 58' 06.81" N LONG. 96° 50' 11.21" W	LAT. 32° 58' 06.81" N LONG. 96° 50' 11.21" W	
MEAN MAX. TEMP. HOTTEST MONTH	96.1°F	96.1°F	
AIRPORT PROPERTY (ACRES)	368	424	
UNICOM (MHz)	122.950	122.950	
NIPAS CATEGORY	RELEVER	RELEVER	
CONTROL TOWER (MHz)	126.0	126.0	

LAYOUT PLAN LEGEND			
ITEM	EXISTING	FUTURE	
BUILDING RESTRICTION LINE	---	---	
AIRPORT PROPERTY LINE	---	---	
FENCE	---	---	
AVIGATION EASEMENT	---	---	
RUNWAY PROTECTION ZONE	---	---	
BUILDINGS	---	---	
AIRFIELD PAVEMENT	---	---	
FUEL STORAGE	---	---	
ROTATING BEACON	---	---	
LIGHTED WIND CONE & SEGMENTED CIRCLE	---	---	
PRECISION APPROACH PATH INDICATOR (PAPI)	---	---	
RUNWAY END IDENTIFIER LIGHTS (REILS)	---	---	
VISUAL APPROACH SLOPE INDICATOR (VASI)	---	---	
THRESHOLD LIGHTS (DISPLACED THRESHOLD LIGHTS)	---	---	
HELICOPTER TOUCHDOWN AND LIFT-OFF AREA (TLOF)	---	---	
WINDCONE	---	---	

NOTE: 1. THIS DRAWING SHOULD NOT BE USED AS A STANDARD FOR PLANNING OR DESIGN.
 2. BASE MAP PROVIDED BY AERIAL DATA SERVICE, TULSA, OKLAHOMA (SEPT. 1995).
 3. MAGNETIC DECLINATION TAKEN FROM 1993 AIRPORT LAYOUT PLAN BY GREENER, INC., FORT WORTH, TEXAS.
 4. HORIZONTAL COORDINATE DATUM IS BASED ON NAD83.
 5. RUNWAY THRESHOLD LAT/LONG INFORMATION TAKEN FROM QC 768 ADDISON AIRPORT, DALLAS, TEXAS (DEC. 1993).
 6. REFER TO RUNWAY PROTECTION ZONE (RPZ) PLAN & PROFILE DRAWINGS FOR ROADWAY/RAILROAD CLEARANCE INFORMATION.

ADDISON AIRPORT
ADDISON, TEXAS

AIRPORT PROPERTY MAP
EXHIBIT 'A'

Barnard Dunkelberg & Company
Tulsa, Oklahoma

FIGURE NUMBER
METRIC SCALE
SCALE
1" = 400'
DATE
NOVEMBER, 1997
DRAWING NUMBER
12 OF 12