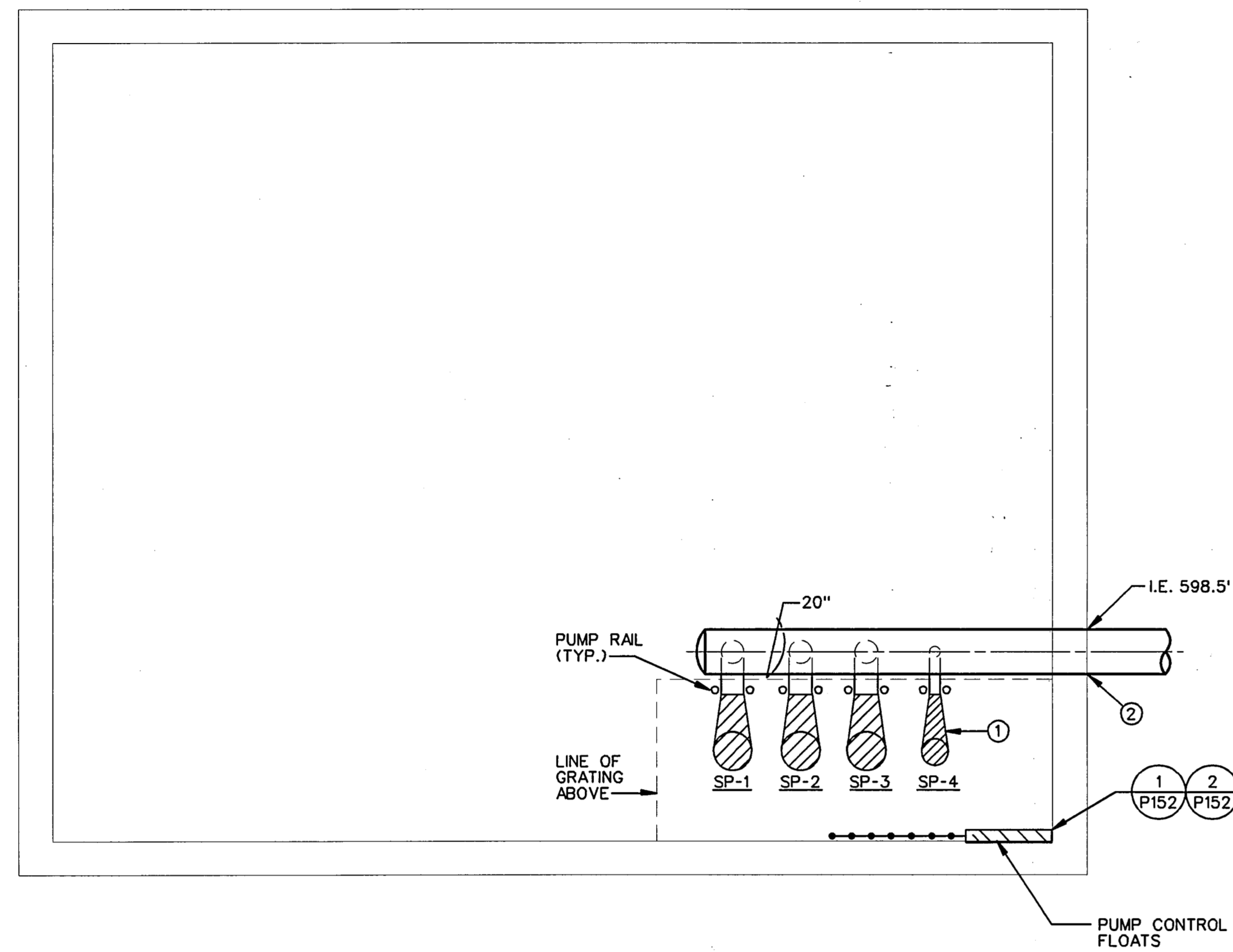
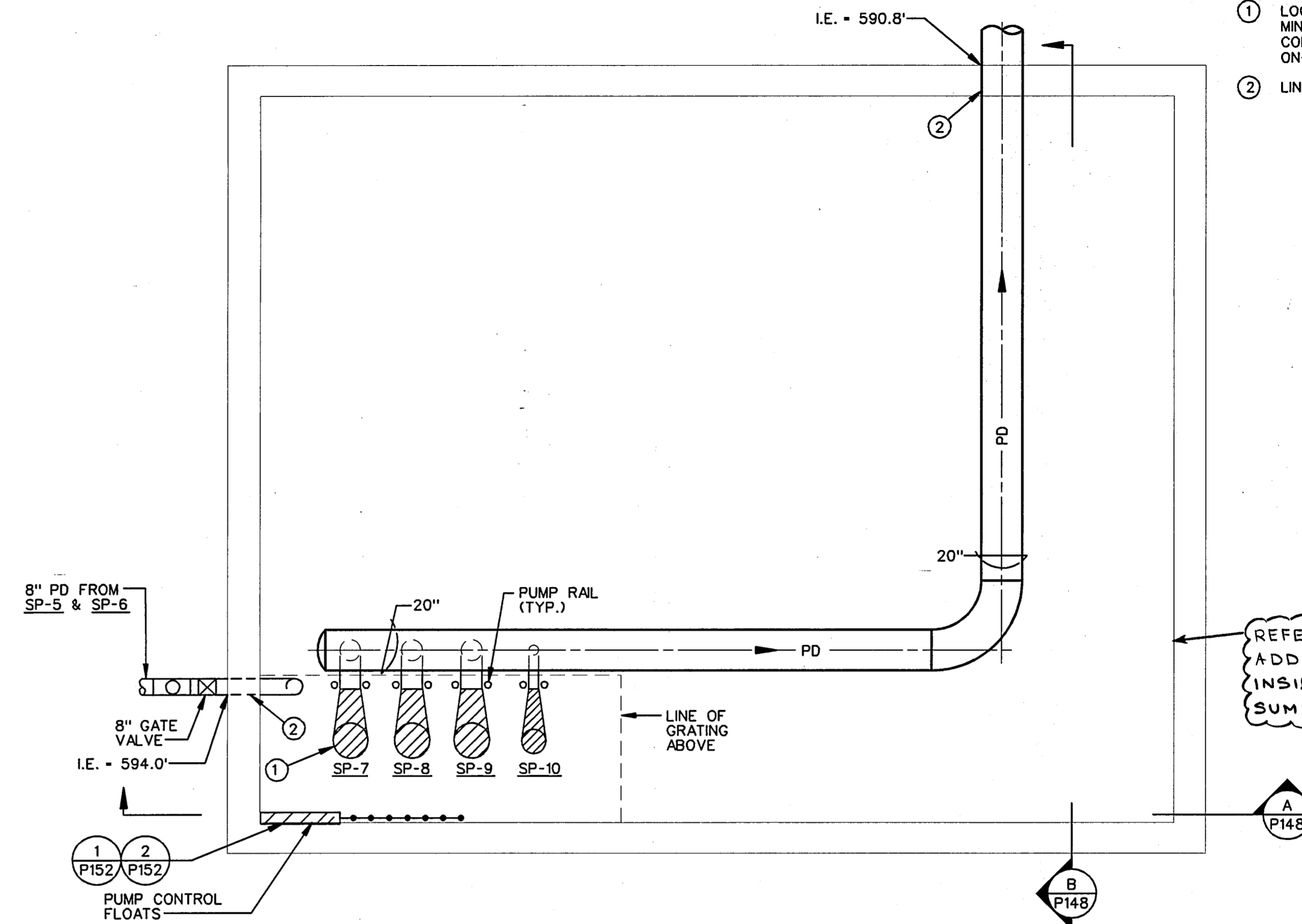


KEY NOTES:

- ① LOCATE THE END PUMP TO MAINTAIN THE MANUFACTURER'S MINIMUM ACCEPTABLE DISTANCE FROM THE SIDE OF THE COLLECTION BOX. LOCATE OTHER PUMPS AT 30" (MAX.) ON-CENTER.
- ② LINK SEAL OR EQUAL.

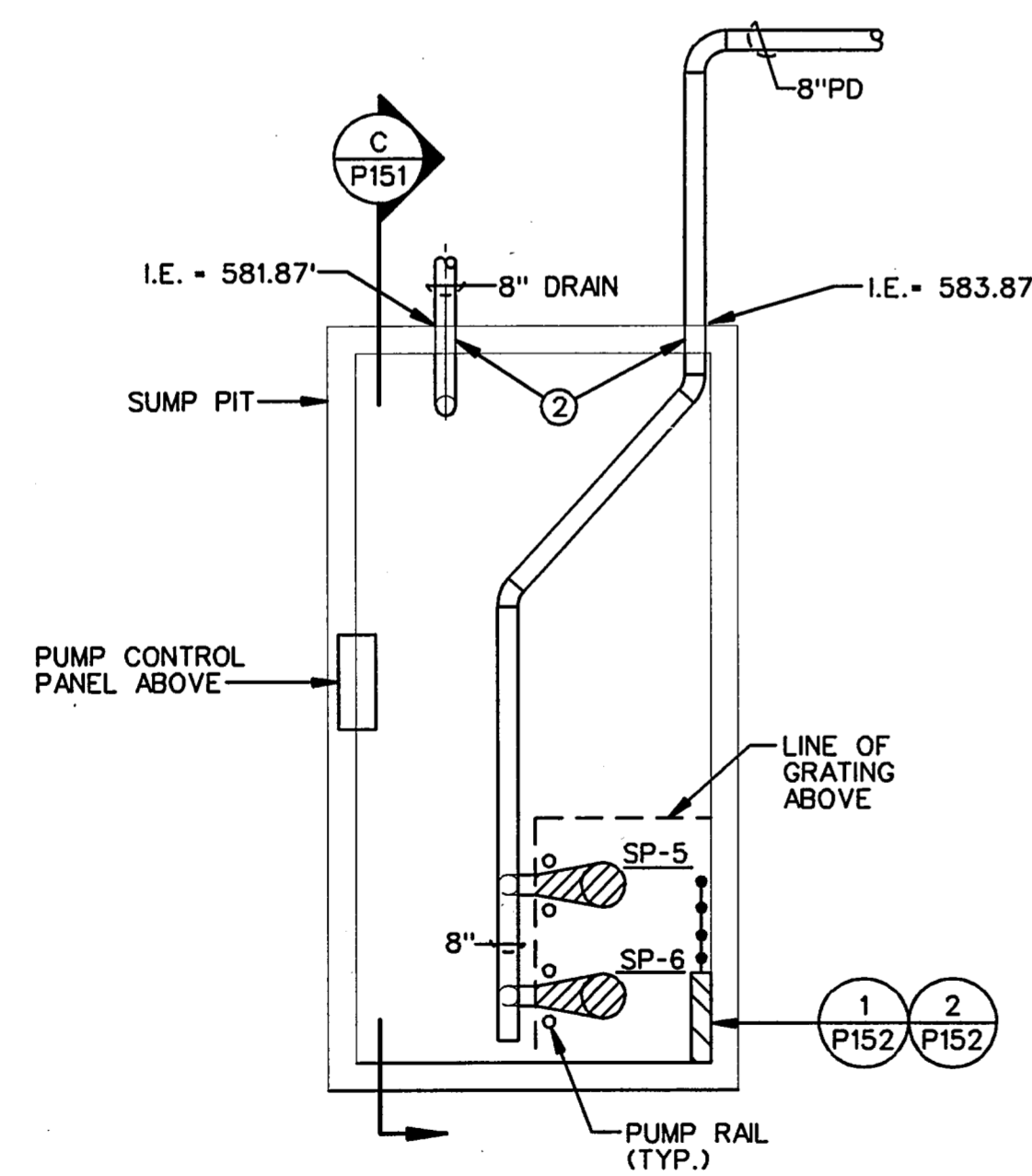


① ENLARGED WEST SUMP PIT - STA. 9+40
 P144 SCALE: 1/4" = 1'-0"



② ENLARGED EAST SUMP PIT - STA. 26+50
 P146 SCALE: 1/4" = 1'-0"

REFER TO RFI # 196
 ADDITIONAL BRACING
 INSIDE PORTAL PUMP
 SUMPS NOT REQUIRED



③ ENLARGED TUNNEL SUMP PIT NICHE
 P145 SCALE: 1/4" = 1'-0"



THE SEAL APPEARING ON THIS DOCUMENT WAS AUTHORIZED BY MIKE L. ASHCRAFT, P.E., 56590 ON SEPTEMBER 9, 1996

FINAL RECORD DRAWING
 Date: 12/25/99

1 REVISION PER RFI # 196

No.	REVISION	BY	DATE
TEXAS TURNPIKE AUTHORITY ADDISON AIRPORT TUNNEL			
ENLARGED SUMP PIT PLANS			
HDR Engineering, Inc.			SECTION XIII
DRAWN: WTD	DATE: 12/05/96	DESIGNED: MLA	DATE: 08/28/96
CHECKED: KG	DATE: 08/28/96	SCALE: AS SHOWN	
CONTRACT No. DNT-260 SHEET P147 OF 166			