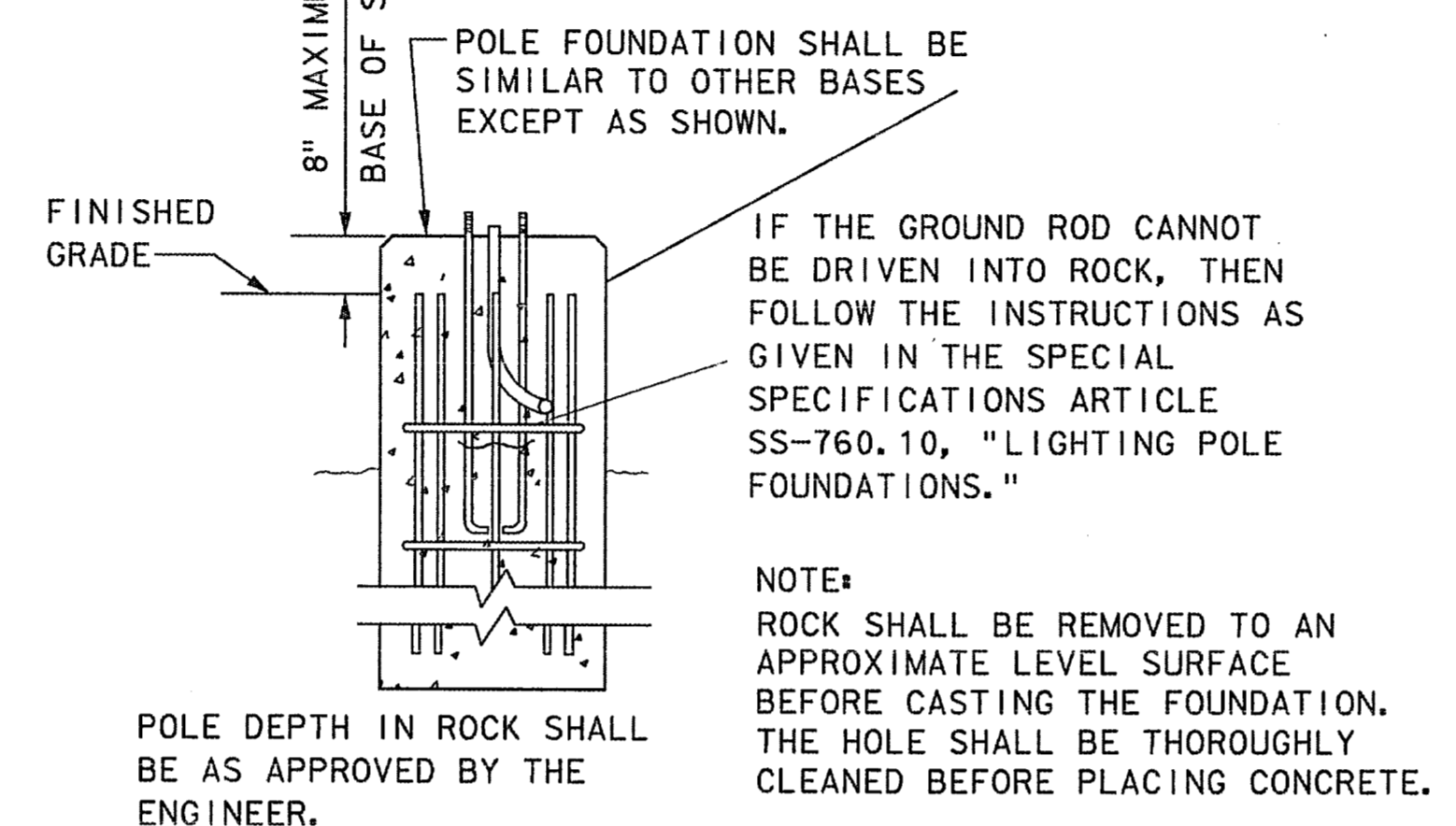
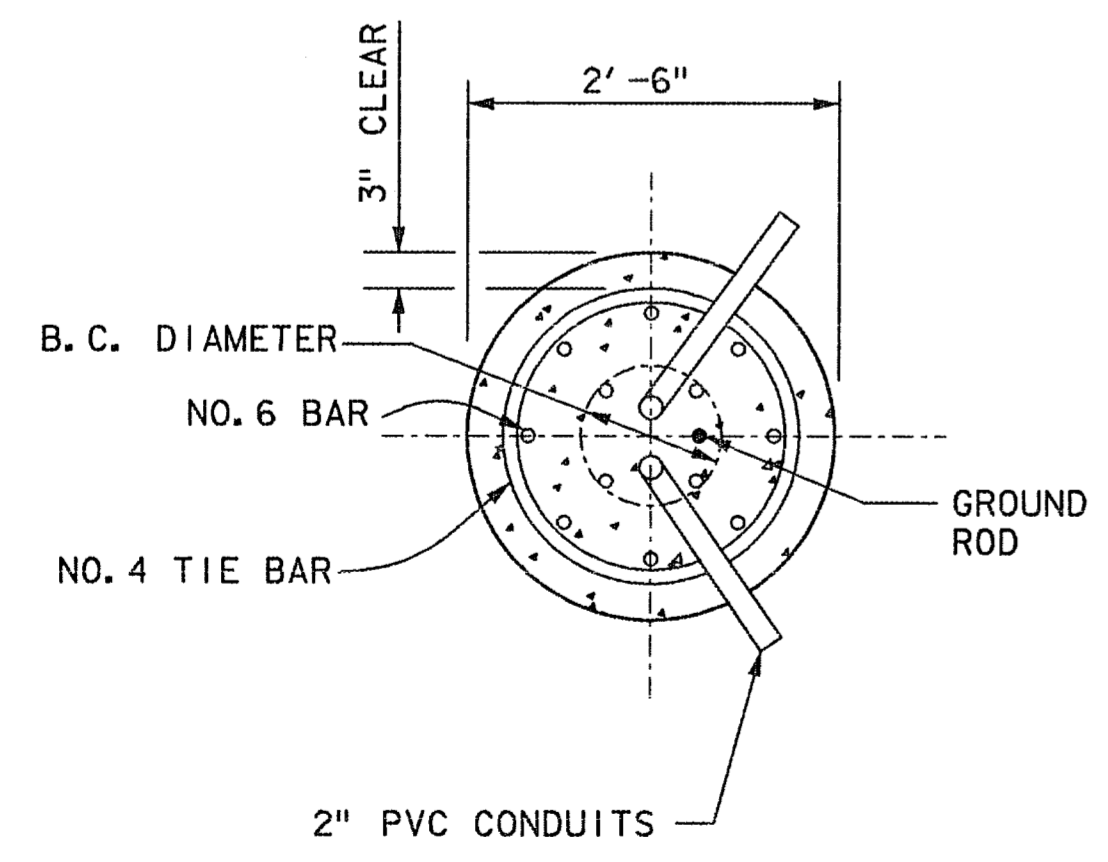


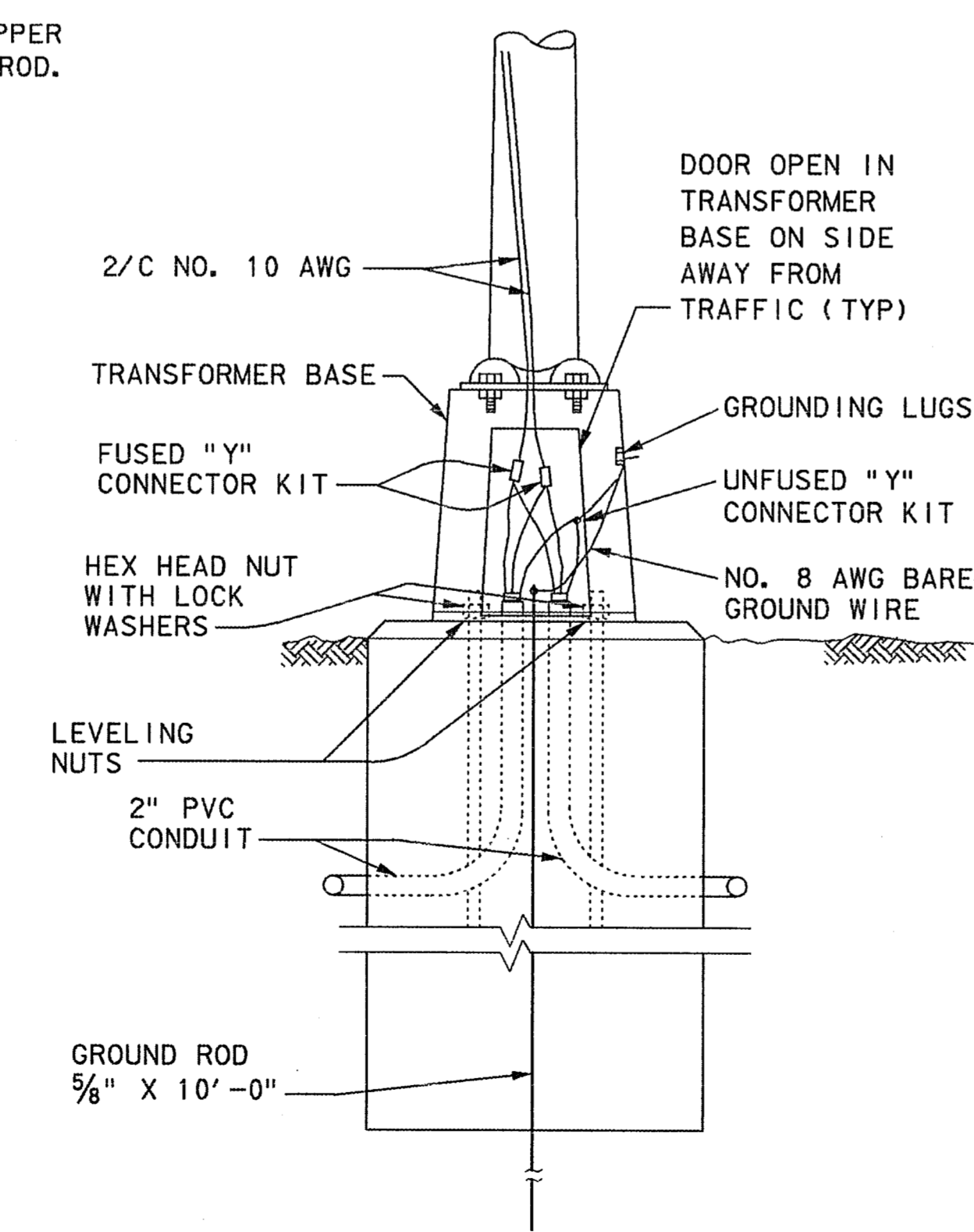
ELEVATION



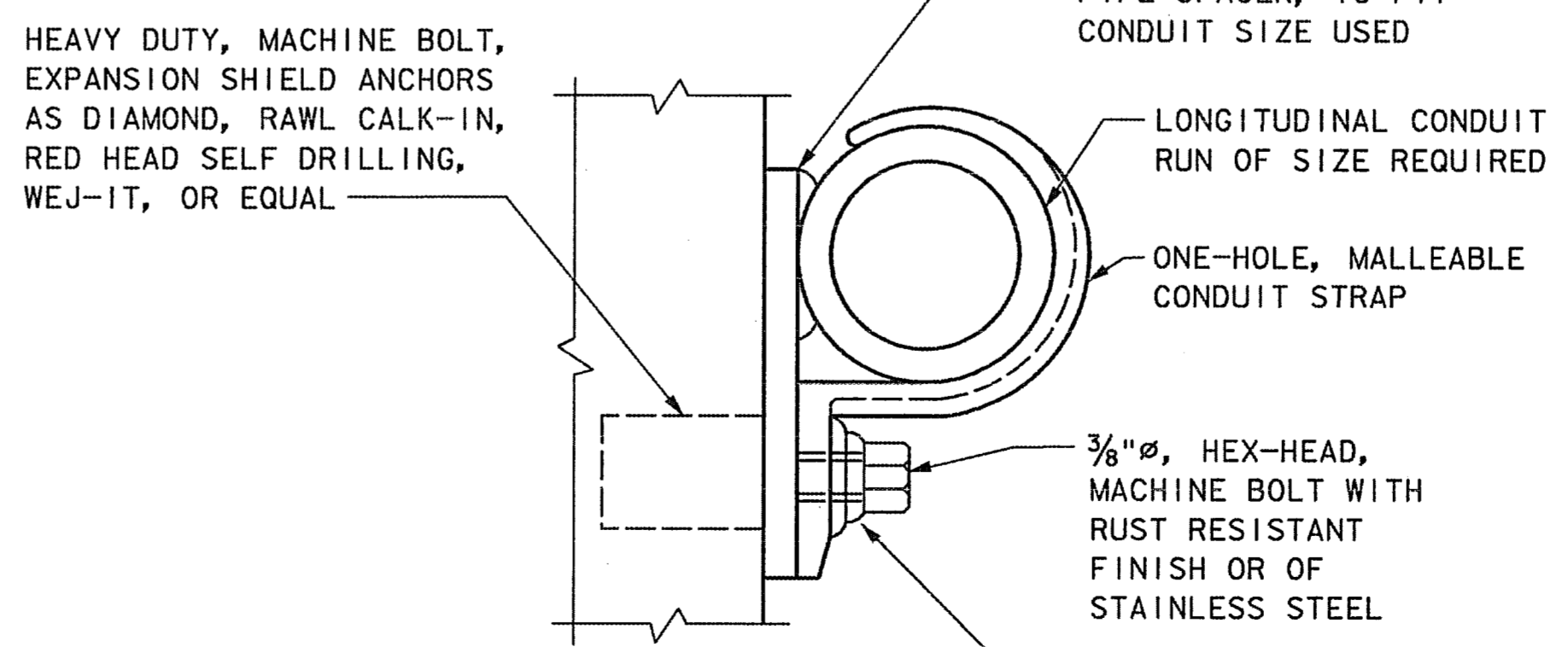
MODIFIED GROUND-MOUNTED LIGHTING STANDARD FOUNDATION ROCK ANCHORAGE



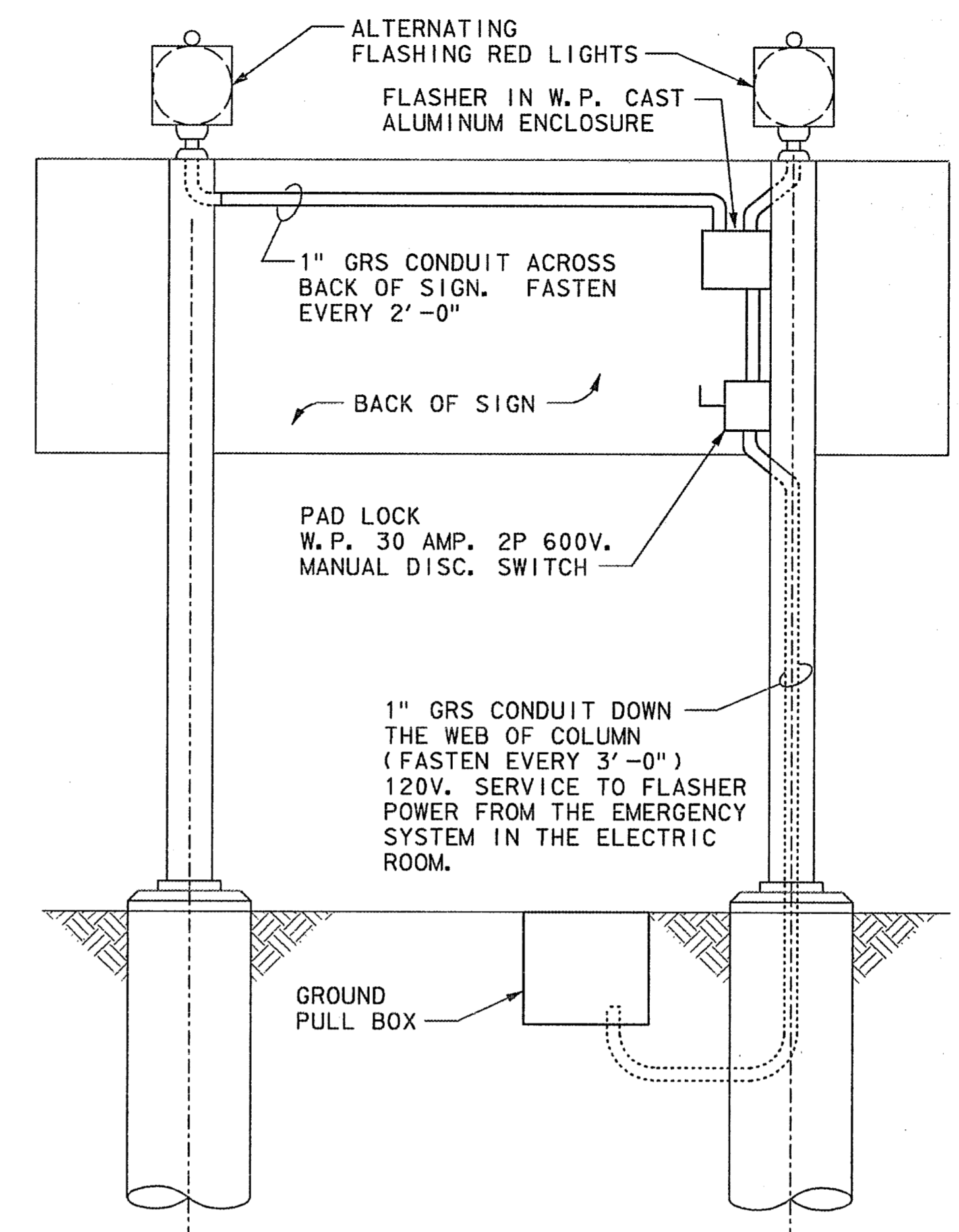
SECTION A-A GROUND-MOUNTED LIGHTING STANDARD FOUNDATION



GROUND-MOUNTED STANDARD MOUNTING AND WIRING DETAIL

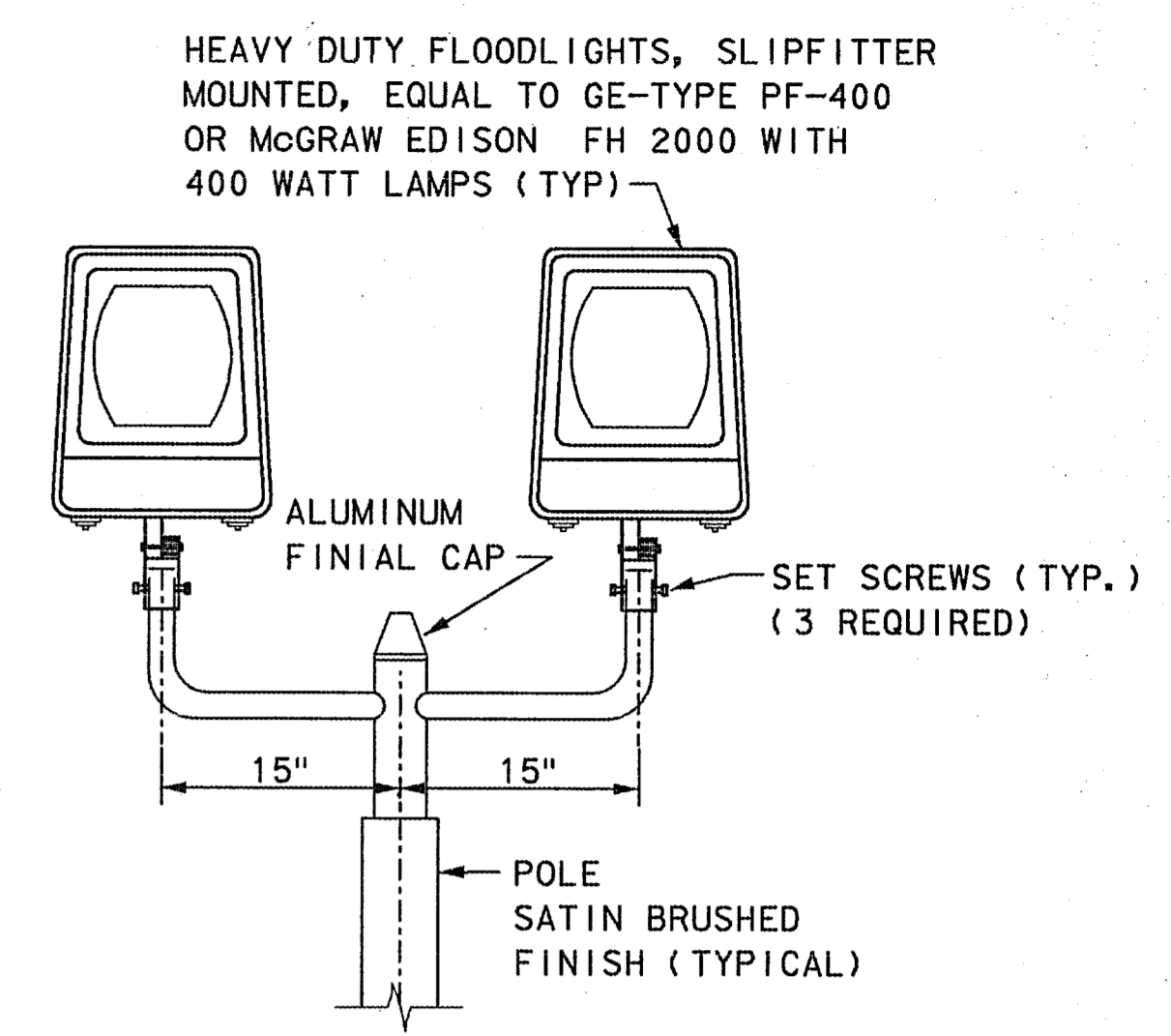


CONDUIT FASTENING DETAIL

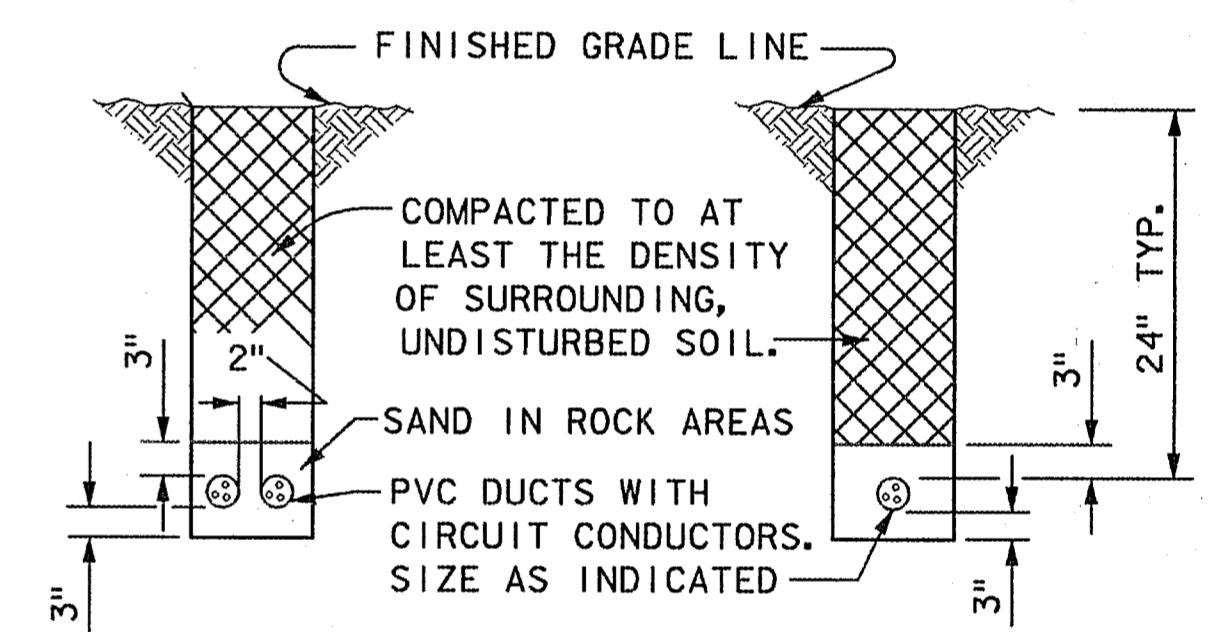


NOTES:
1. SIGN, COLUMNS, CONCRETE BASES ETC. BY OTHERS.

WARNING LIGHTS "DO NOT ENTER" SIGN ELECTRICAL DETAIL



ELEVATION TYPICAL MAIN TOLL PLAZA LIGHTING UNITS



PVC DIRECT BURIAL DUCT

NOTES:
1. IF THE DUCT-CABLE TRENCH EXTENDS INTO ROCK, THE DUCT-CABLE SHALL BE BEDDED IN 3 INCHES OF DAMP SAND AND COVERED WITH 3 INCHES OF DAMP SAND BEFORE BACKFILLING IS STARTED.
2. IN ROCK, THE DUCT-CABLE BURIAL DEPTH MAY BE REDUCED FROM 24 INCHES TO 18 INCHES, WHERE THIS DUCT IS IN A 3 INCH SAND BED ON TOP OF THE ROCK. BURIAL MAY BE LESS THAN 18 INCHES IF DUCT-CABLE AND SAND BED ARE EMBEDDED TO AN 8 INCH MINIMUM.

THE SEAL APPEARING ON THIS DOCUMENT WAS AUTHORIZED BY RICHARD J. MILLER, P.E. NO. 42812 ON JANUARY 12, 1999. ALTERATION OF A SEALED DOCUMENT WITHOUT PRIOR NOTIFICATION TO THE RESPONSIBLE ENGINEER IS AN OFFENSE UNDER THE TEXAS ENGINEERING PRACTICE ACT.



FINAL RECORD DRAWING
Date: 12/25/99

No.	REVISION	BY	DATE
NORTH TEXAS TOLLWAY AUTHORITY ADDISON AIRPORT TUNNEL			
MISCELLANEOUS ELECTRICAL DETAILS			
MCE MATED CONSULTING ENGINEERS, INC. 5519 PETERSON LANE SUITE 225 DALLAS, TEXAS 75240 (972) 933-6100			
SECTION XIII			
DRAWN: SAA	DATE: 5/97	DESIGNED: DR	DATE: 5/97
CHECKED: RJM	DATE: 5/97	SCALE: NONE	
CONTRACT No. DNT-260 SHEET 25 OF 52			