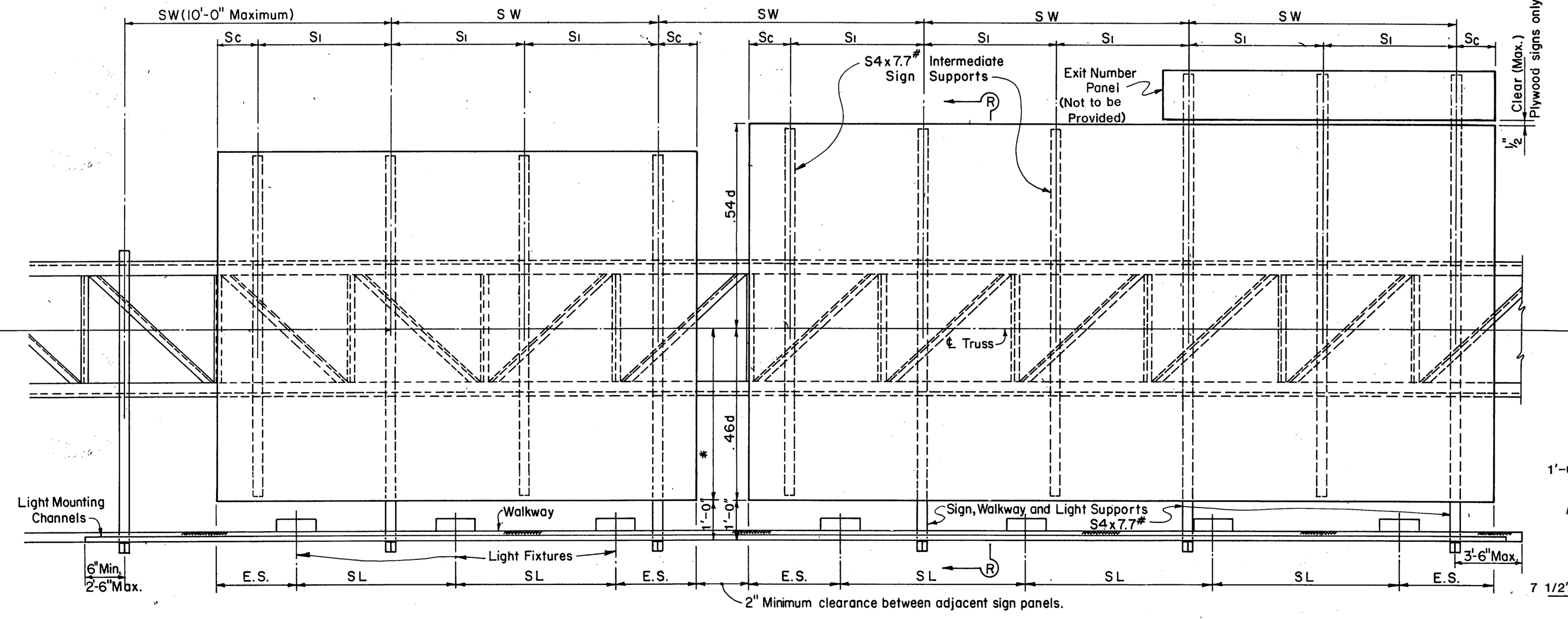


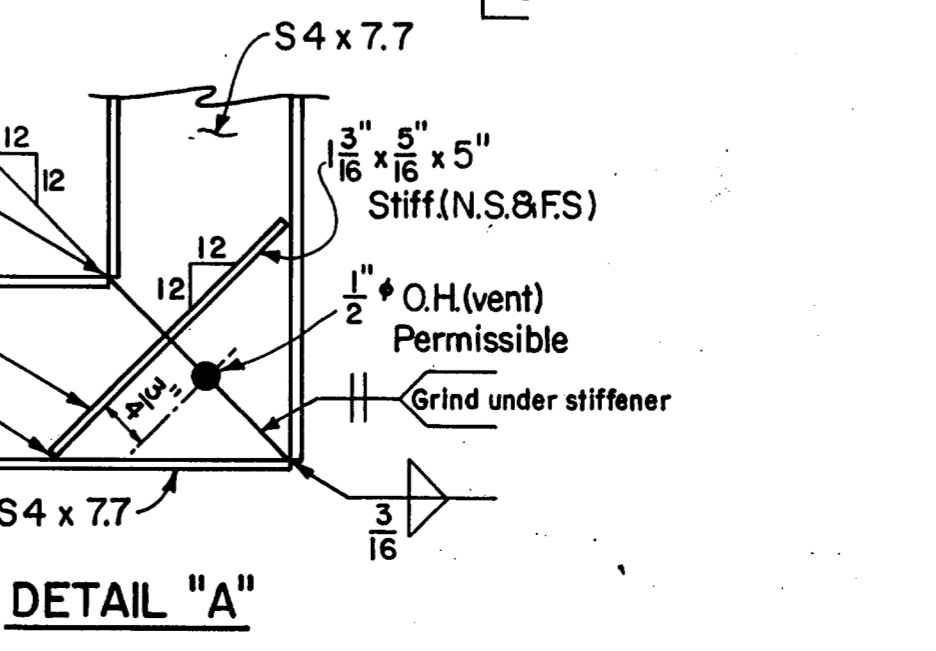
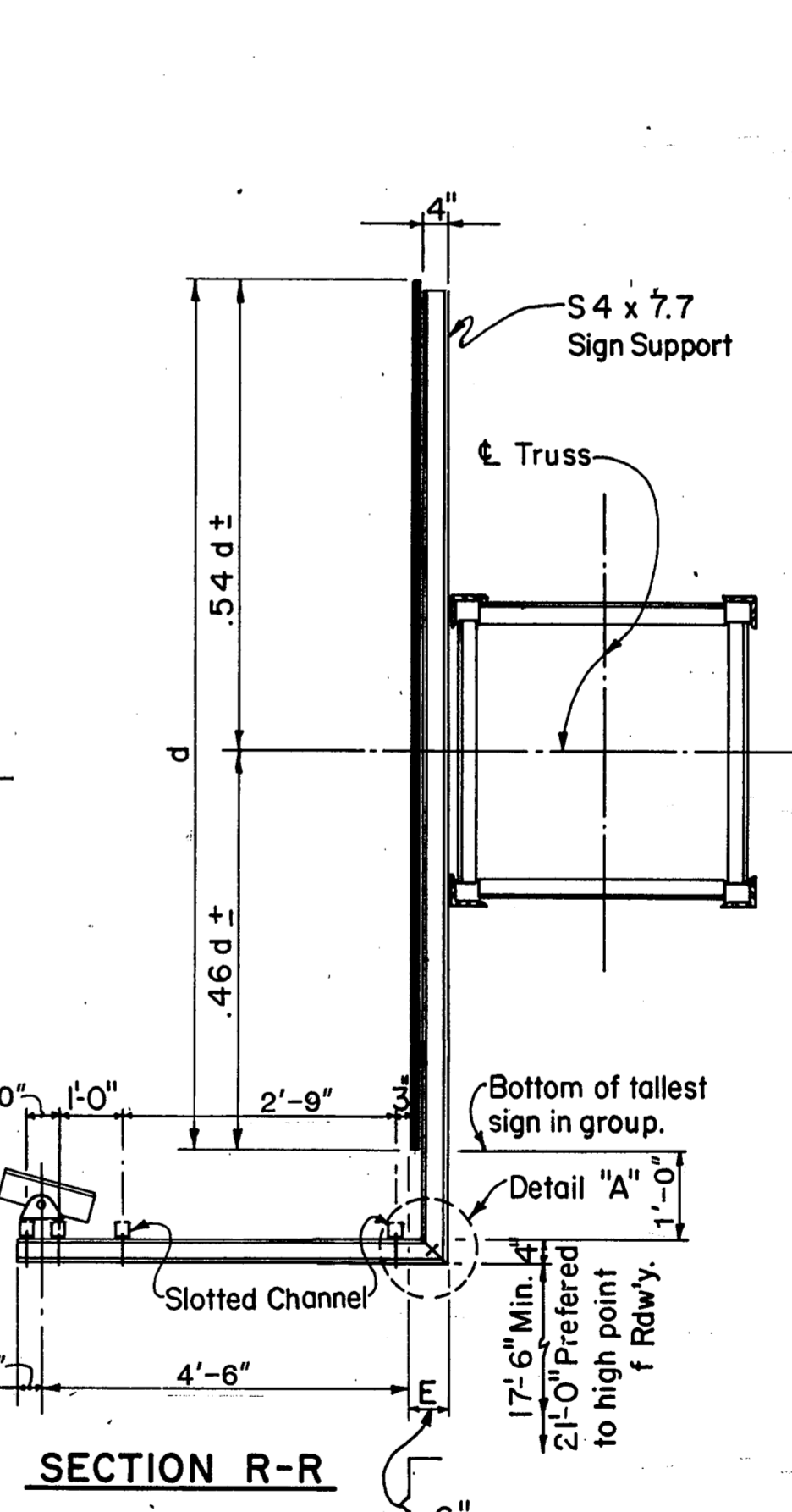
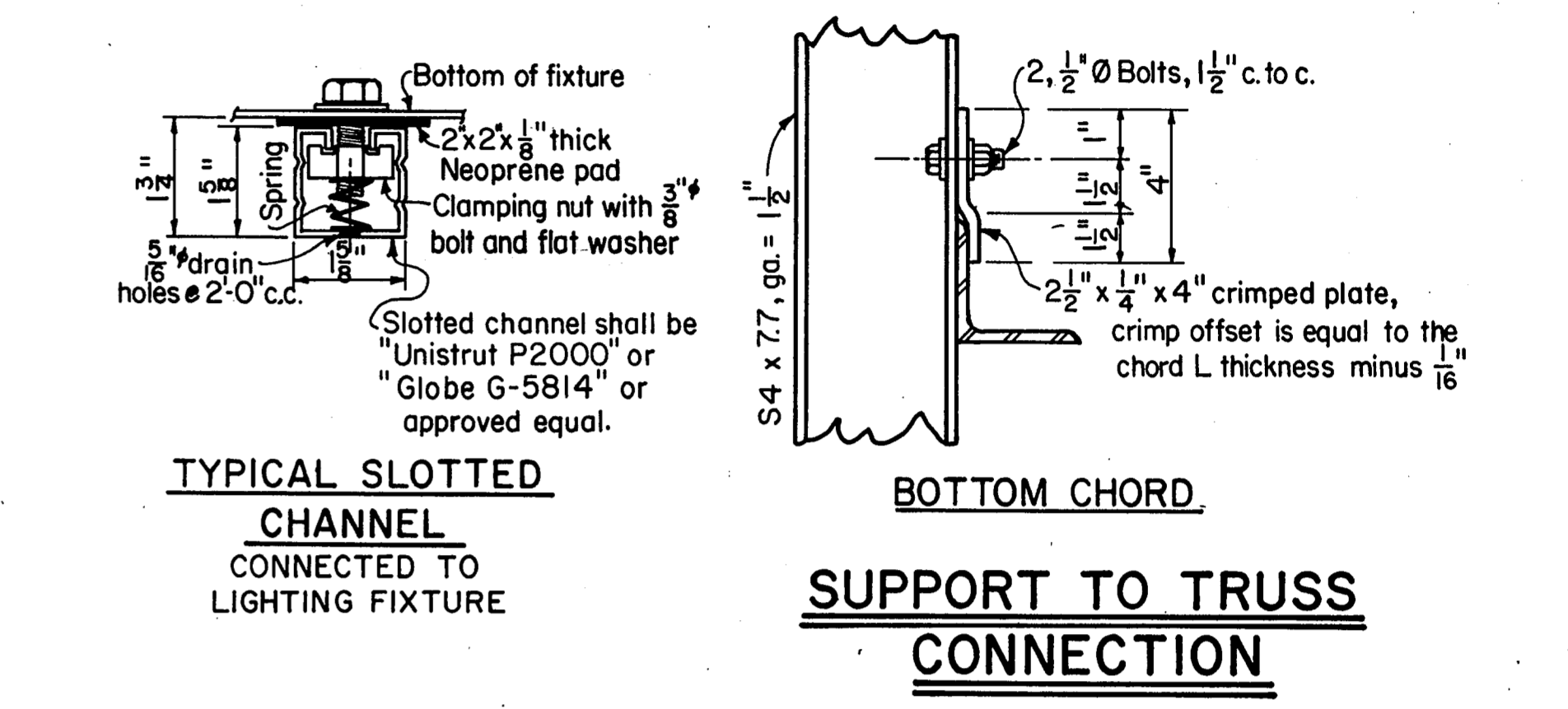
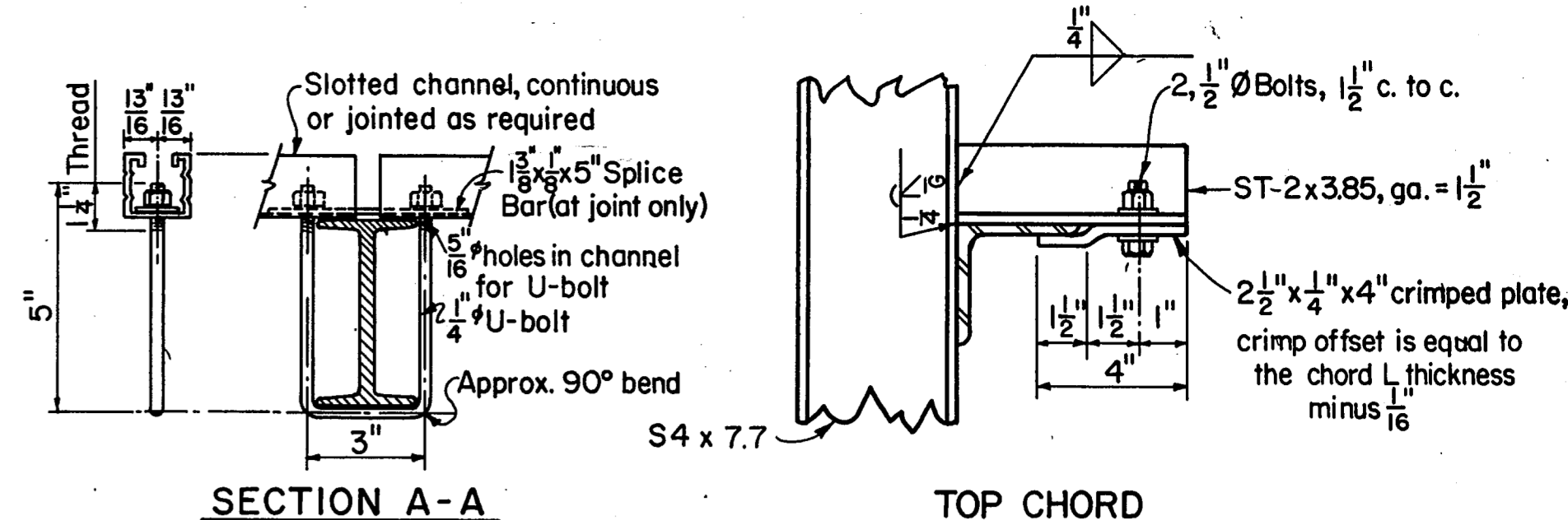
PART PLAN
(Showing Truss, Signs, Walkways and Lights)



PART ELEVATION

* Where signs of different depths are used, the bottom edges of all signs may be placed in line. Where this is done, all signs should be so positioned that the bottom edges are approximately 0.46 of the depth of the deepest sign below the ϵ of the truss. When signs are spaced thusly, S_i is determined by the deepest sign.

See Overhead Sign Bridge Detail Sheets for Spacing SL & E.S.
See Standard Drawing No. SS-19 for Aluminum Sign Details & Max. Spa. for Si.
Sc = 6" Minimum, .25 Si Maximum.



GENERAL NOTES:
Design conforms to the AASHTO Standard Specifications for Structural Supports for Highway Signs, Luminaires and Traffic Signals.
Materials, Fabrication, Construction and Erection shall conform with the requirements of specifications for Interstate Signage and Delineation Projects and Texas Department of Highways and Public Transportation Standard Specifications for Construction of Highways, Streets and Bridges. Structural Steel shall conform with A.S.T.M. Specification A 36 unless noted otherwise.
Bolts shall have Hexagon Heads and Nuts and conform with A.S.T.M. Specification A 307.
All parts shall be galvanized after fabrication.
Sign Walkways shall not be provided for this Project.

REPRODUCED FROM STATE DEPARTMENT OF HIGHWAYS AND PUBLIC TRANSPORTATION STANDARD DRAWING SB(SWL-1)

FINAL RECORD DRAWING
Date: 12/25/99

1 MISC. REVISIONS		GRB.	4-1-86
NO.	REVISION	BY	DATE
TEXAS TURNPIKE AUTHORITY			
DALLAS NORTH TOLLWAY			
SUPPORT BRACKETS FOR SIGNS, WALKWAY & LIGHTS 31			
HNTB HOWARD NEEDLES TAMMEN & BERGENDOFF			
DRAWN	DATE	DESIGNED	DATE
CHECKED	DATE	SCALE	
STANDARD DRAWING NO. SS-27			