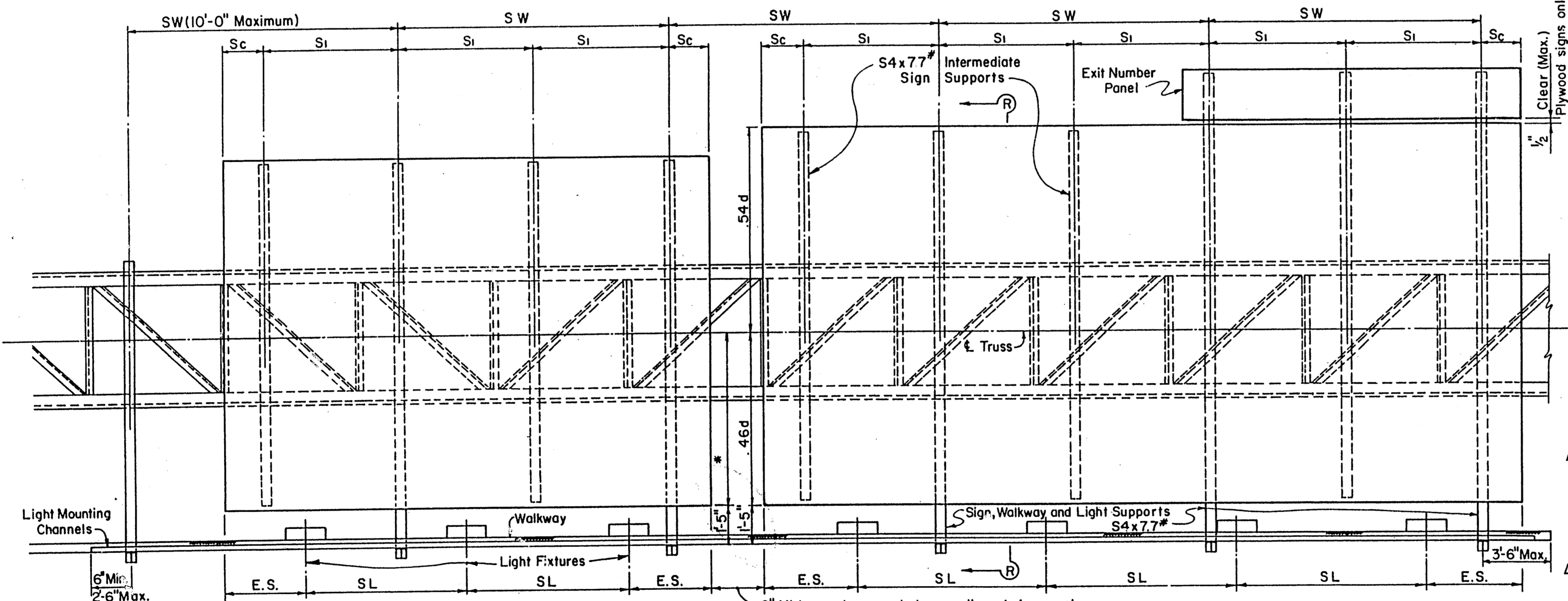


Sc = 6" Min. and .25 S1 Max.

PART PLAN

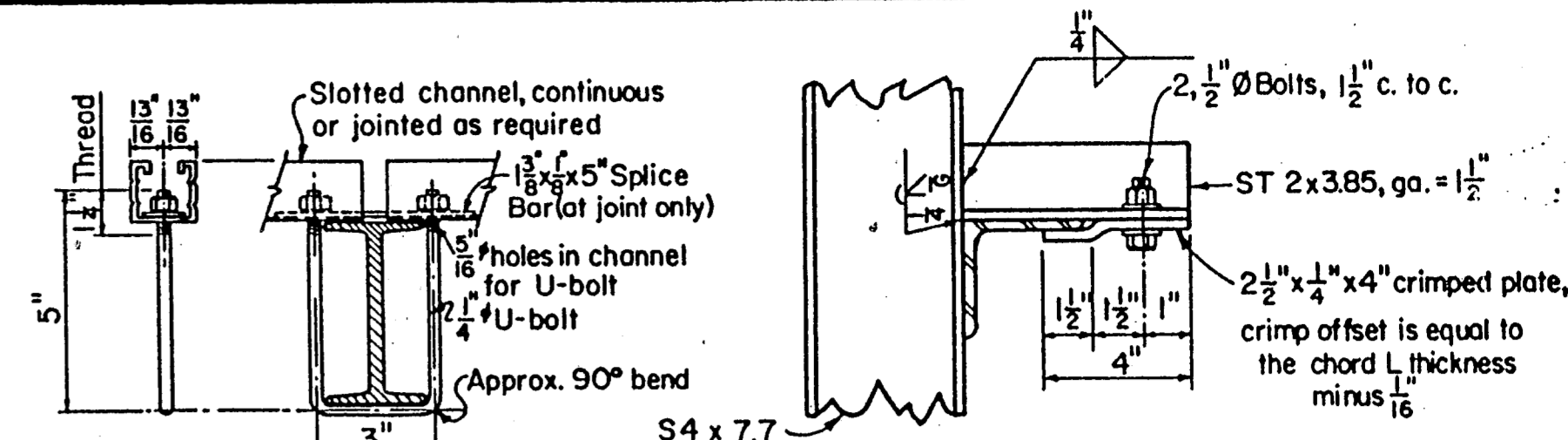
(Showing Truss, Signs, Walkways and Lights)



PART ELEVATION

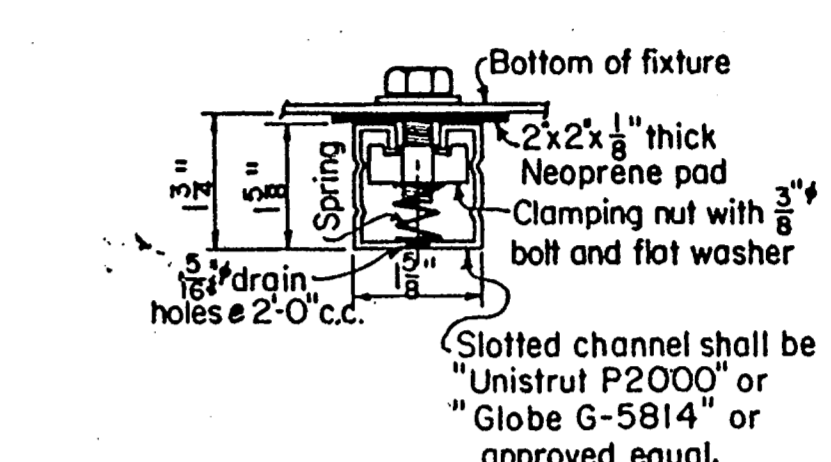
* Where signs of different depths are used, the bottom edges of all signs may be placed in line. Where this is done, all signs should be so positioned that the bottom edges are approximately 0.45 of the depth of the deepest sign below the centerline of the truss. When signs are spaced thusly, S1 is determined by the deepest sign.

See Sheet SMD(P-1)(MOD) for Sign Details & Max. Spa. for S1.
Sc = 6" Minimum, .25 S1 Maximum.

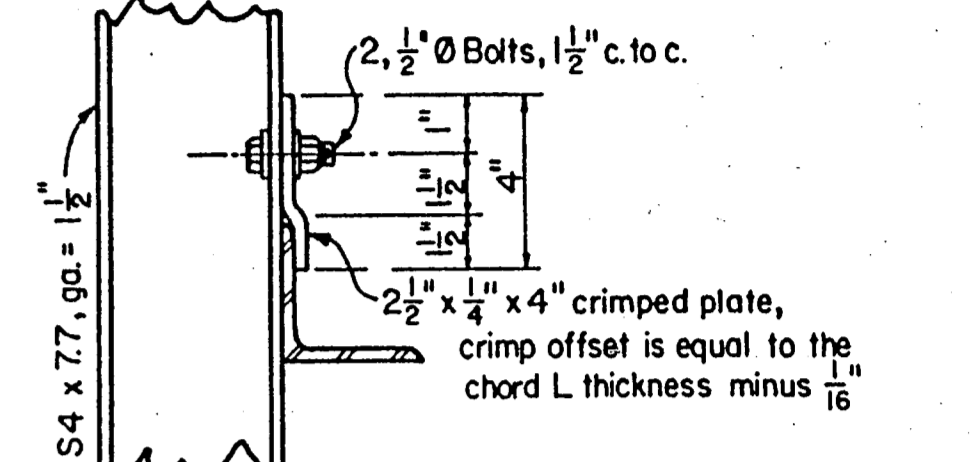


SECTION A-A

TOP CHORD



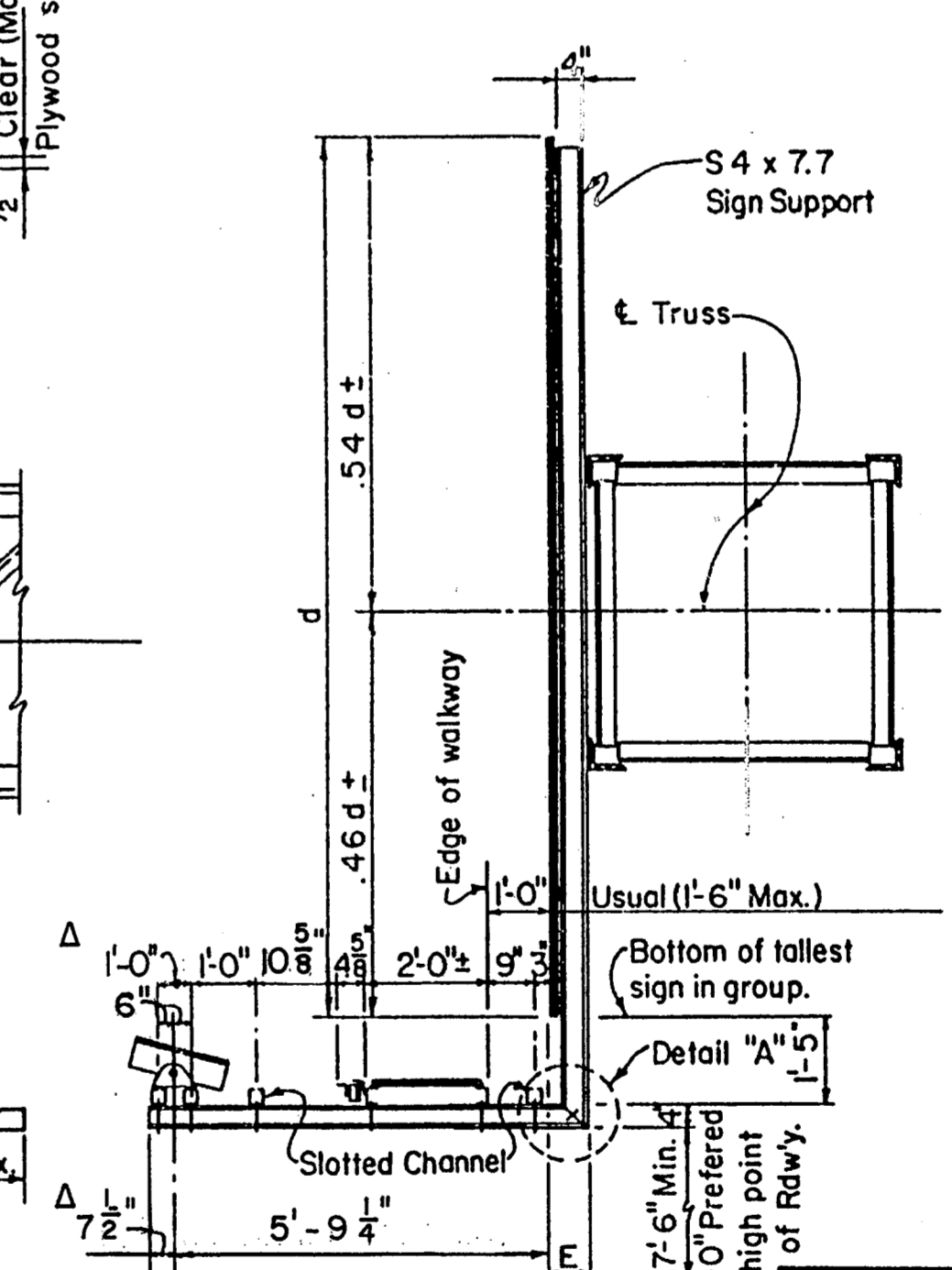
TYPICAL SLOTTED CHANNEL CONNECTED TO LIGHTING FIXTURE



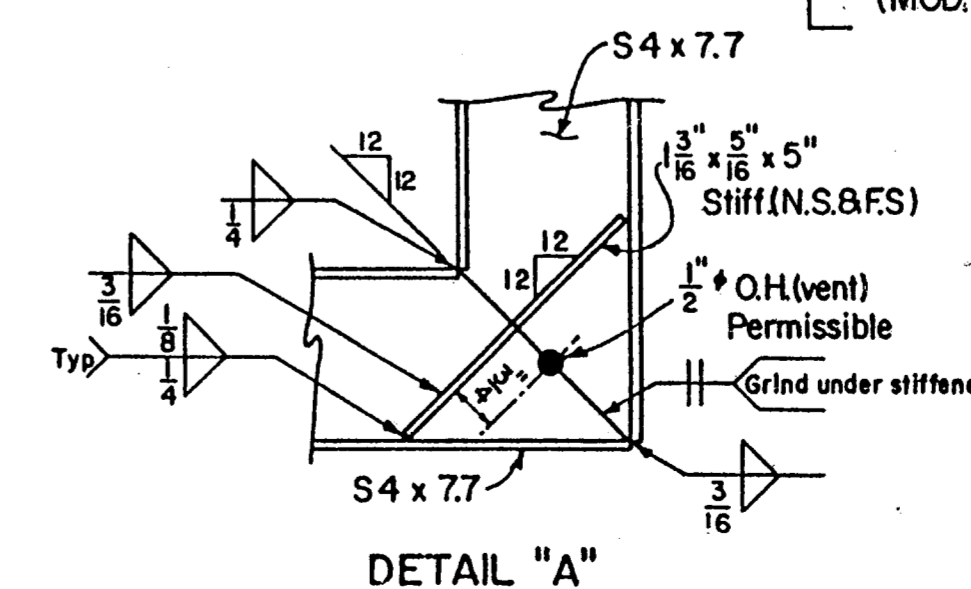
BOTTOM CHORD

SUPPORT TO TRUSS CONNECTION

NOTE: Exit Panel may be supported by sign support brackets as shown hereon, or may be supported as shown on sheet. SMD(P-1) (MOD). Regardless of method used spacing of supports shall not exceed S1.



SECTION R-R



DETAIL "A"

GENERAL NOTES:
Design conforms to the AASHTO Standard Specifications for Structural Supports for Highway Signs, Luminaires and Traffic Signals.
Materials, Fabrication, Construction and Erection shall conform with the requirements of specifications for Interstate Signing and Delineation Projects and Texas Department of Highways and Public Transportation Standard Specifications for Construction of Highways, Streets and Bridges. Structural Steel shall conform with A.S.T.M. Specification A36 unless noted otherwise.
Bolts shall have Hexagon Heads and Nuts and conform with A.S.T.M. Specification A307.
All parts shall be galvanized after fabrication.



NOTE:
WALKWAYS AND SIGN LIGHTS SHALL NOT BE PROVIDED AS A PART OF THIS PROJECT.

FINAL RECORD DRAWING
Date: 12/25/99

STATE DEPARTMENT OF HIGHWAYS AND PUBLIC TRANSPORTATION		SUPPORT BRACKETS FOR SIGNS, WALKWAY & LIGHTS		SB (SWL-1)(MOD.)	
ORIGINAL DRAWING DATE: 2-82	STATE DISTRICT: DALLAS	FEDERAL REGION: 6	FEDERAL AID PROJECT: 6	COUNTY: COLLIN	CONTROL SECTION: 029
DR: CWC	REVISIONS: 12-11-96	DR: EDS	DR: CWC	JOB: 84	