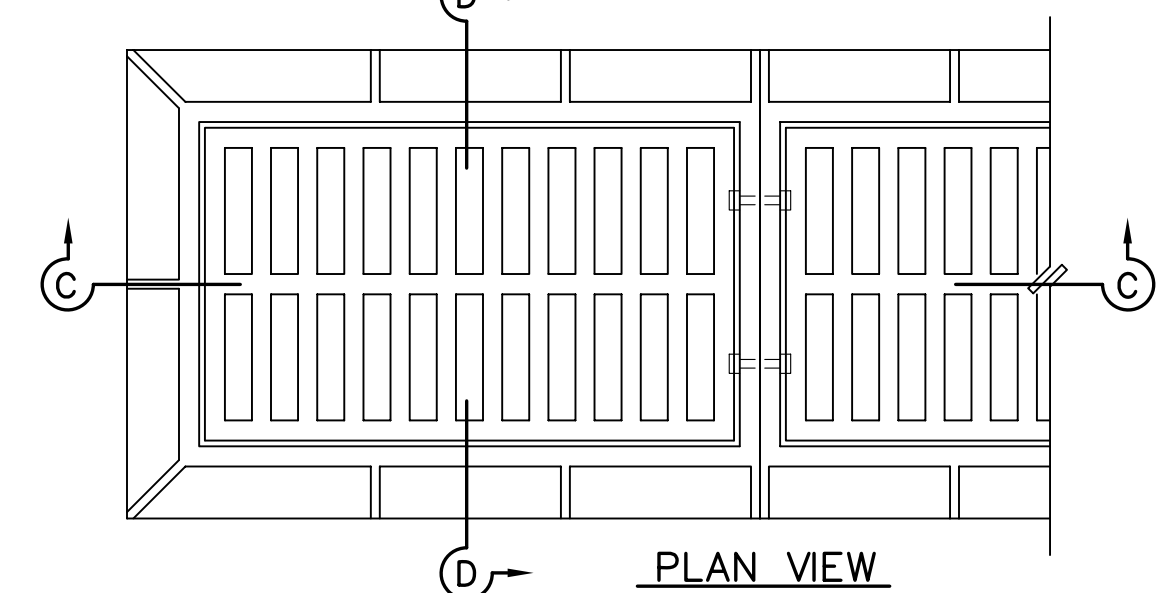
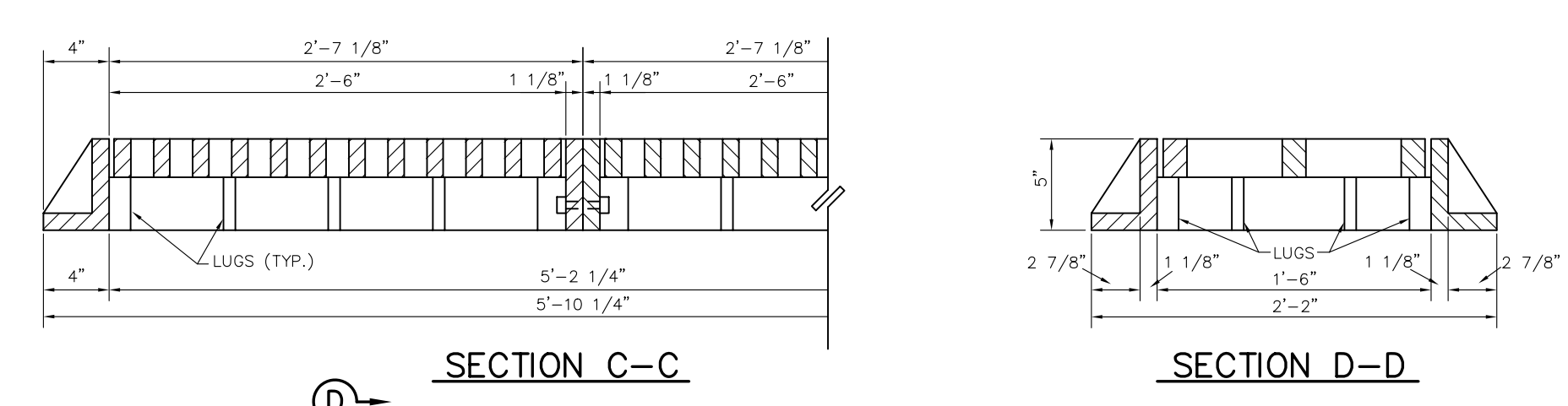
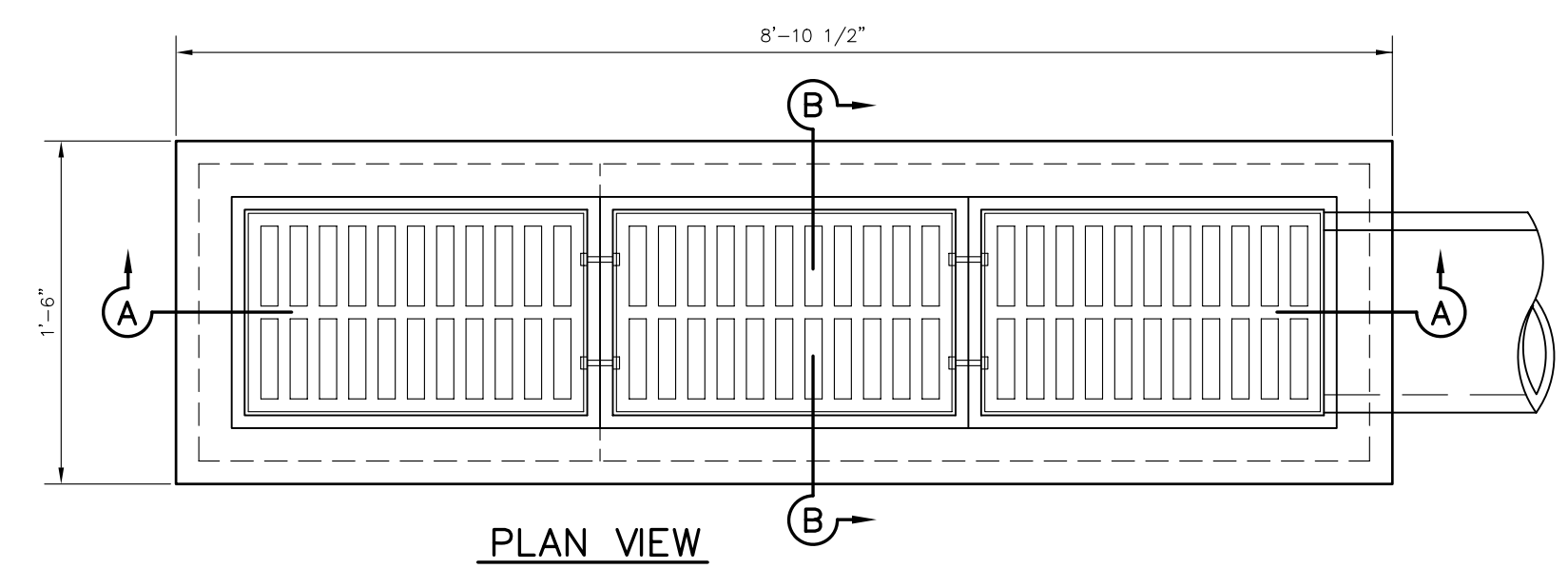


**Y-INLET TO JUNCTION BOX CONVERSION DETAILS
(AT STA. 3+75 LINE SD-1)**



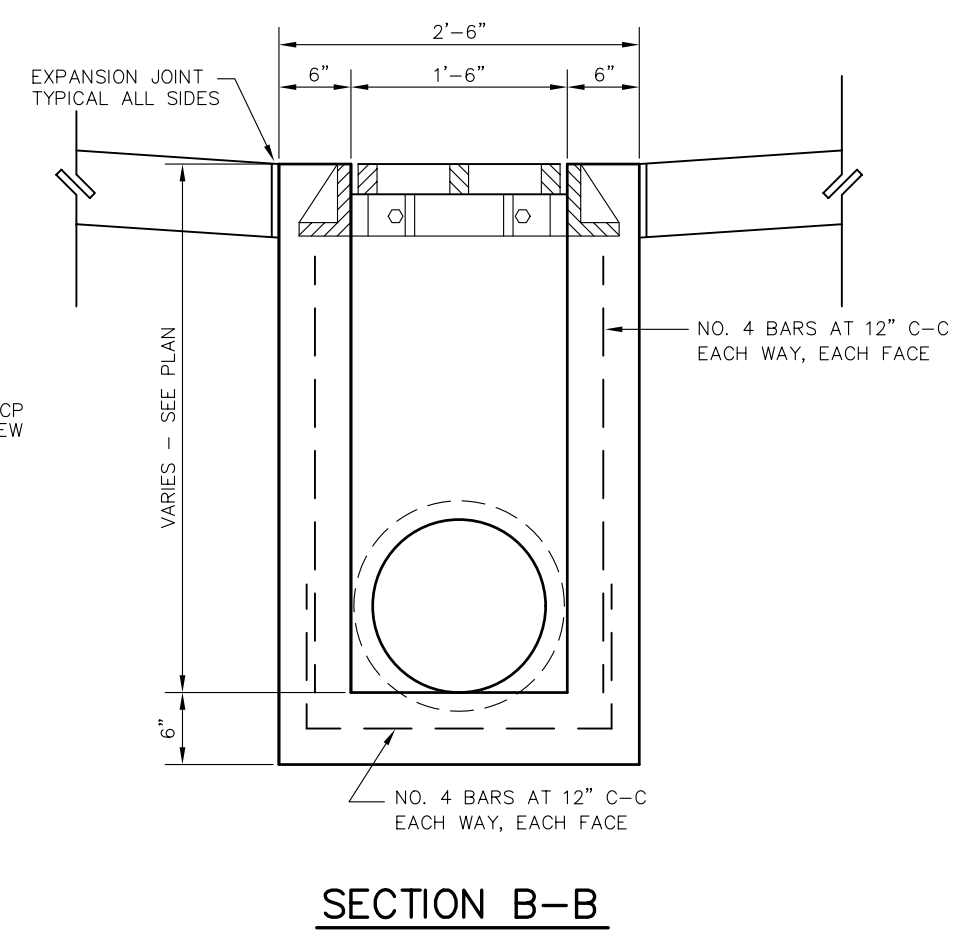
GRATE DETAILS



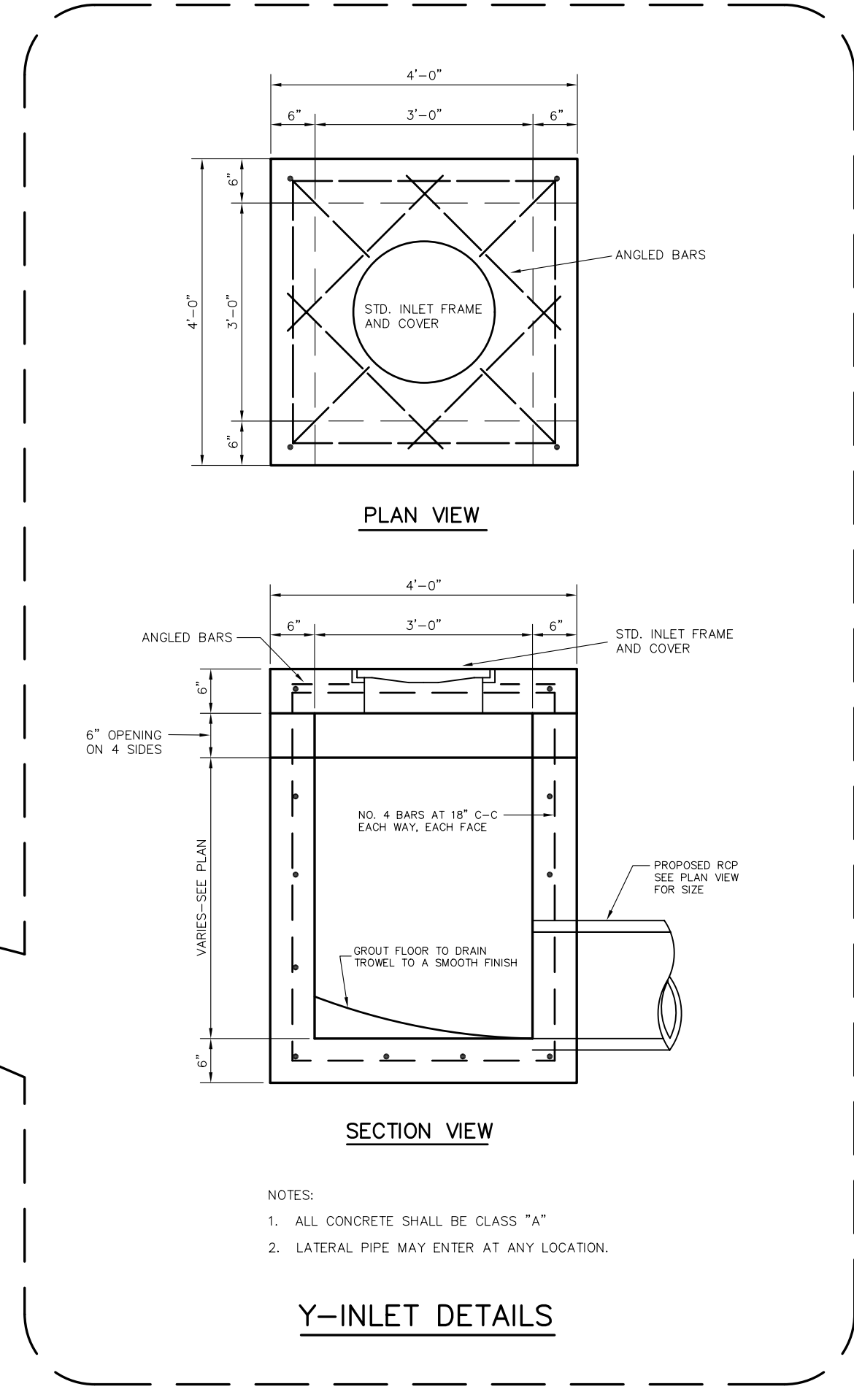
SECTION A-A

GRATE INLET DETAILS

- NOTES:
1. ALL LAPS AND EXTENSIONS OF REINFORCING BARS SHALL BE 30 BAR DIAMETERS UNLESS NOTED OTHERWISE.
 2. TACK WELD GRATES IN PLACE OR USE GRATE LOCK.
 3. PIPE MAY BE PLACED IN ANY WALL, BUT SHALL NOT ENTER ANY CORNER, OR BOTTOM.
 4. CONCRETE TO BE A MINIMUM OF 4200 P.S.I.

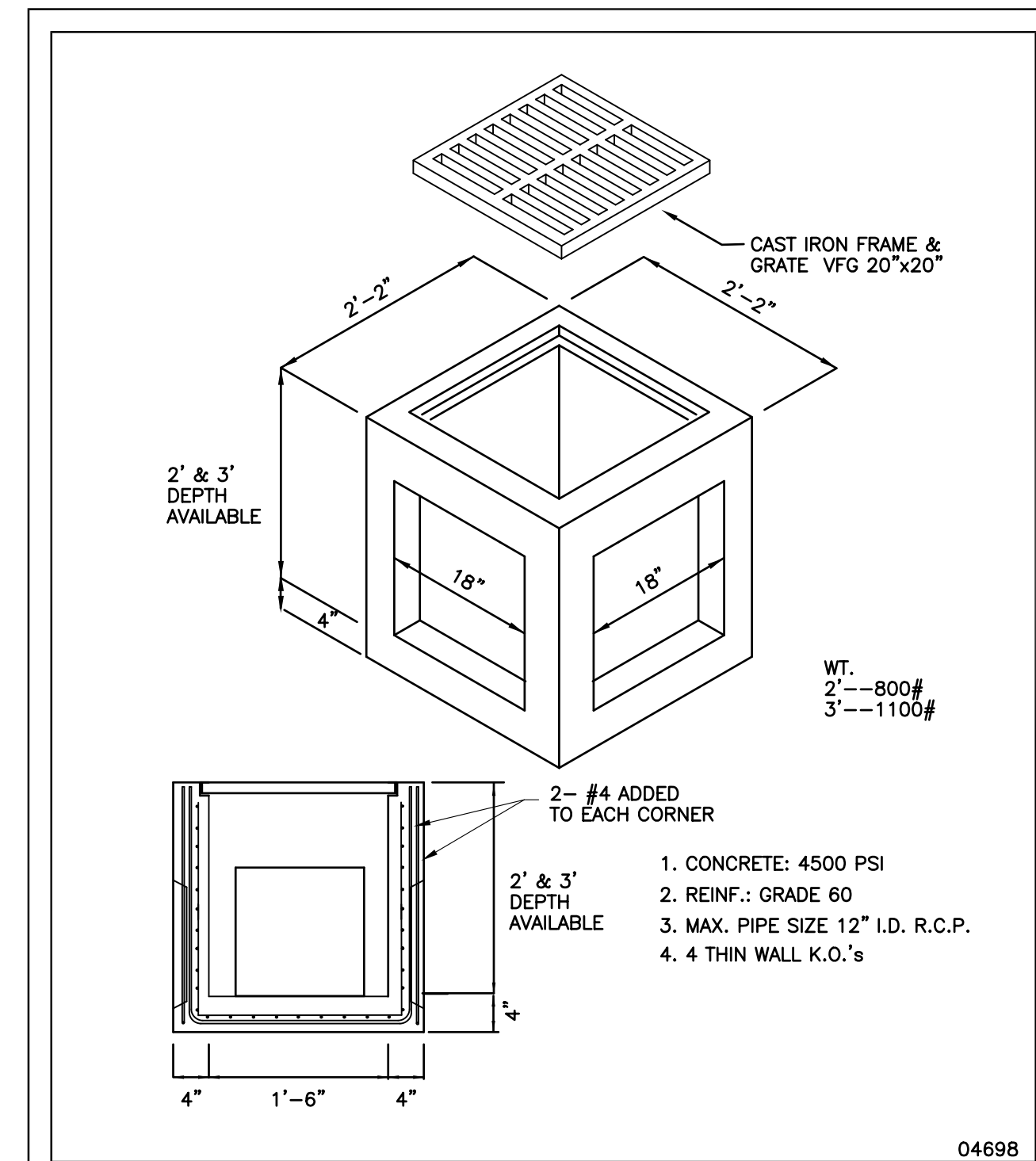


SECTION B-B

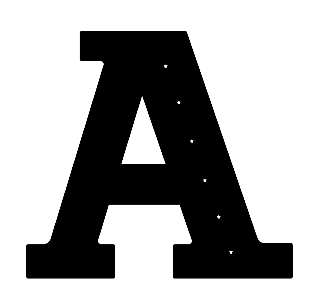


Y-INLET DETAILS

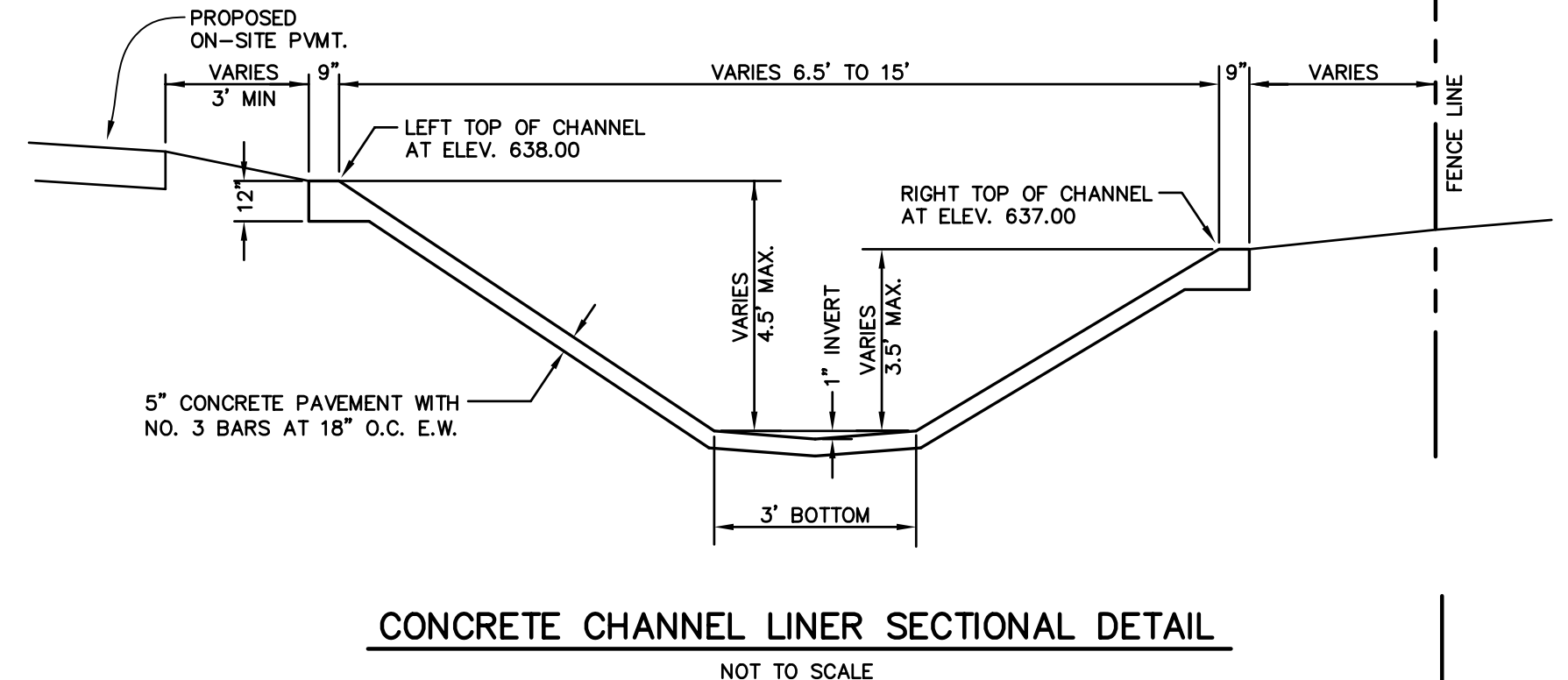
- NOTES:
1. ALL CONCRETE SHALL BE CLASS "A"
 2. LATERAL PIPE MAY ENTER AT ANY LOCATION.



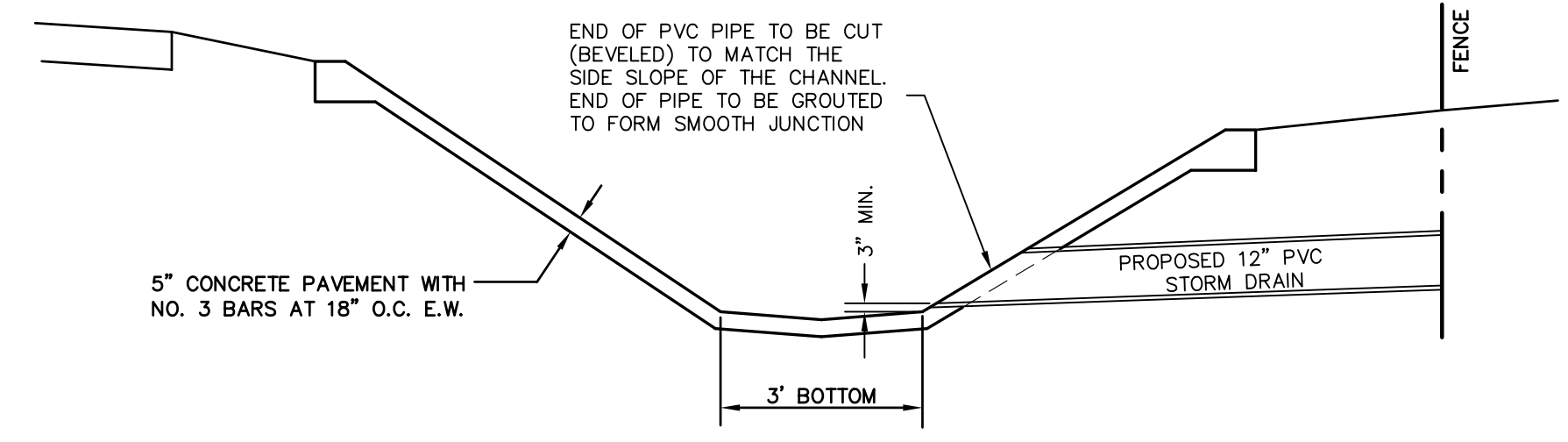
CATCH BASIN NO. 20



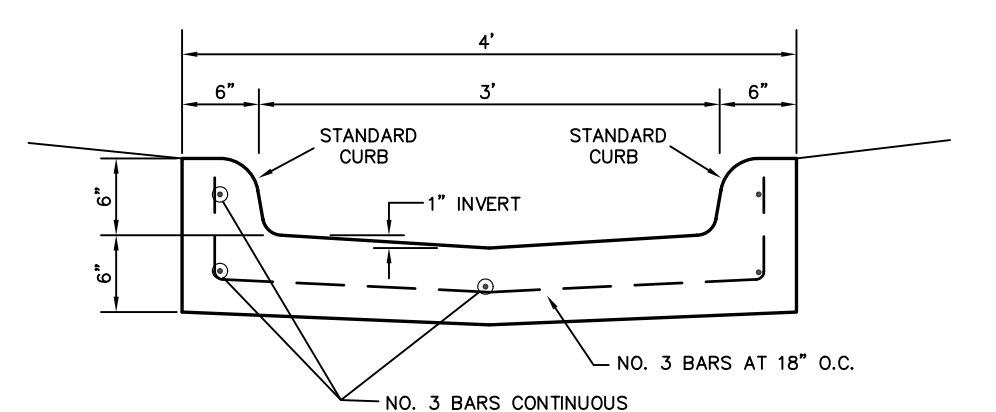
American Industrial Pre-Cast Products, Inc.
P.O. BOX 365 ALVARADO, TEXAS 76009. METRO: 817-477-5286
501 EAST BAXTER SEGUIN, TEXAS 78155 210-401-0555



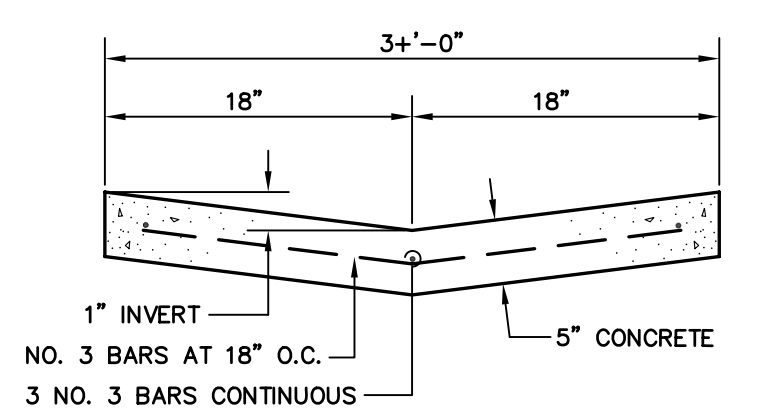
CONCRETE CHANNEL LINER SECTIONAL DETAIL



12\"/>

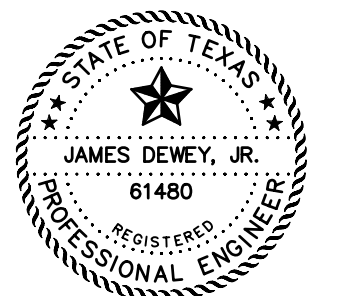


CURBED FLUME DETAIL



CONCRETE FLUME DETAIL

REVISIONS:	
7/25/08	CITY COMMENTS
9/02/09	AS BUILT



SHEET TITLE:
STORM DRAIN DETAILS
HANGER ADDITION PLANS FOR
EXECUTIVE HANGAR OWNERS ASSOCIATION OF ADDISON
ADDISON AIRPORT
ADDISON, TEXAS

PREPARED BY:
JDJR ENGINEERS AND CONSULTANTS
ENGINEERS • SURVEYORS • LAND PLANNERS
2500 Texas Drive Suite 100 Irving, Texas 75062
Tel 972-252-5357 Fax 972-252-8958

DATE: APR. 8, 2008	DRAWN BY: SAS	SHEET NO.
SCALE: AS SHOWN	CHECKED BY: JDJR	C8 of 10

"AS-BUILT"
THIS AS-BUILT DRAWING IS BASED ON INFORMATION OBTAINED FROM BUILDING CONTRACTORS DURING CONSTRUCTION AS PROVIDED TO JDJR ENGINEERS & CONSULTANTS, INC.
JDJR ENGINEERS & CONSULTANTS, INC. DOES NOT GUARANTEE THE ACCURACY OR COMPLETENESS OF THESE RECORDS.