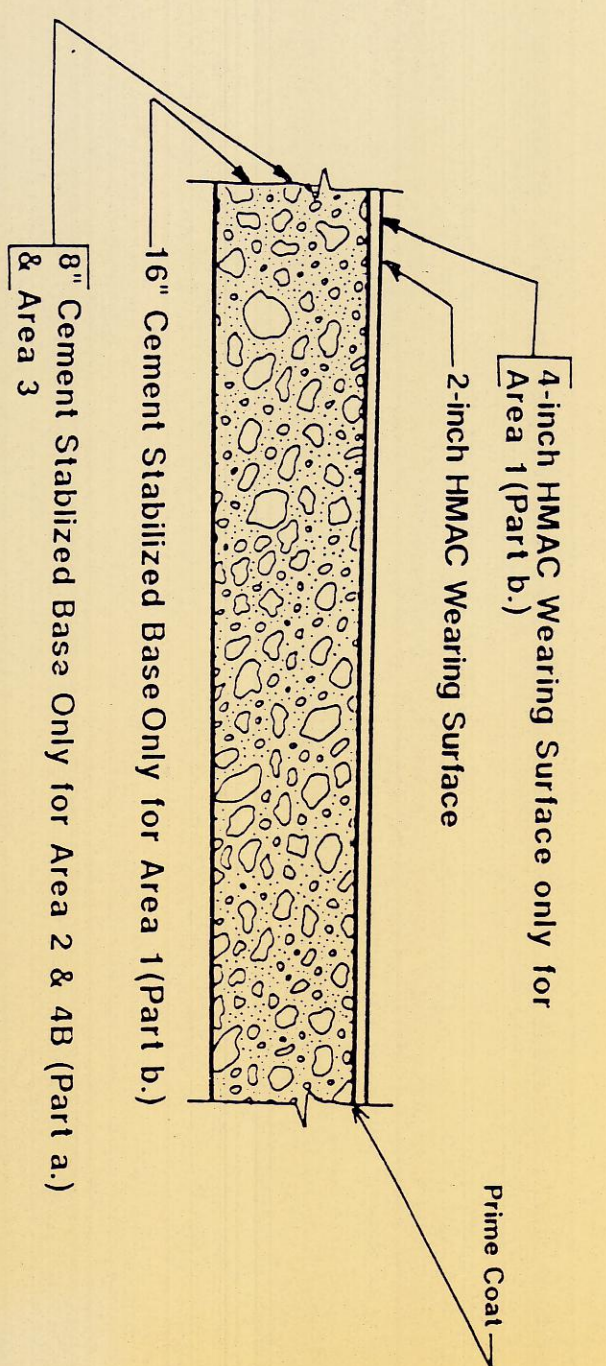


- Notes:
1. Portland Cement Concrete - SDHP Item 360, Specify a minimum 28 day compressive strength of 3,000 pounds per square inch.

2. Cement Stabilized Base (CSB), specifications SDHP 274, Type "D", Grade I with strength of 750 pounds per square inch at 7 days.
3. Scarify and recompact upper six inches of subgrade to 95 Percent Relative Compaction (Tex 113 E) at or above Optimum Moisture Content.

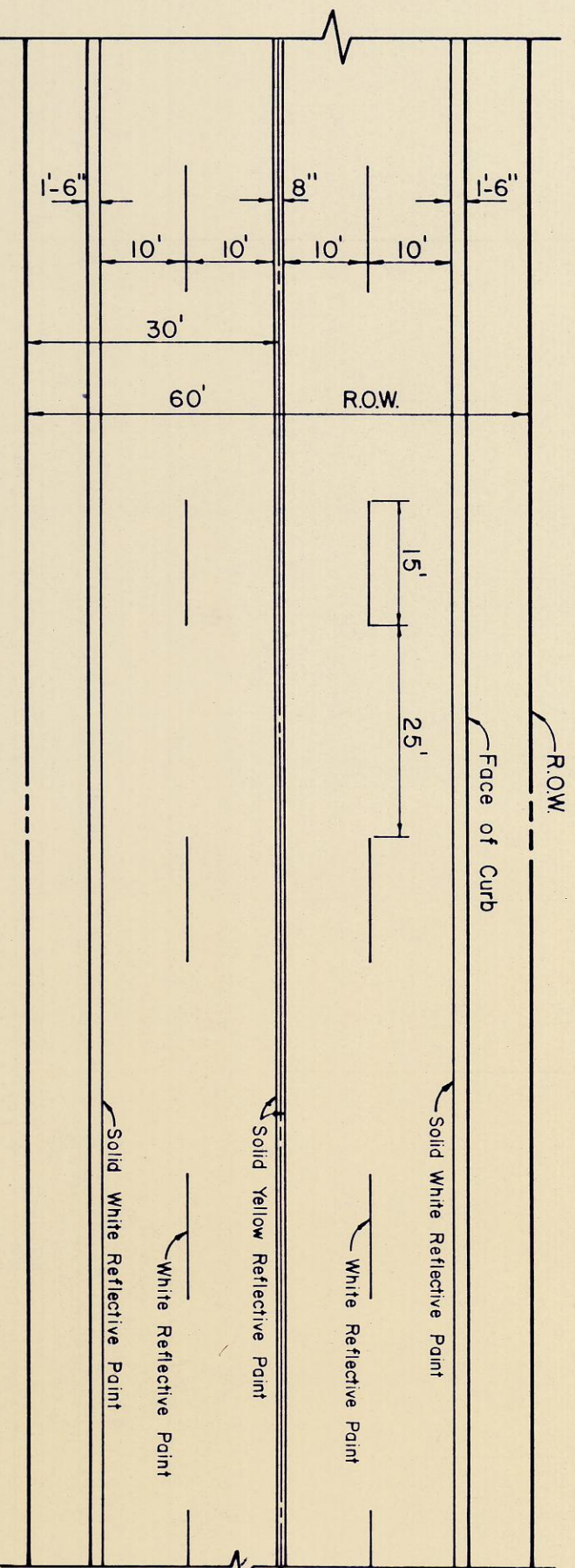
PLATE 5



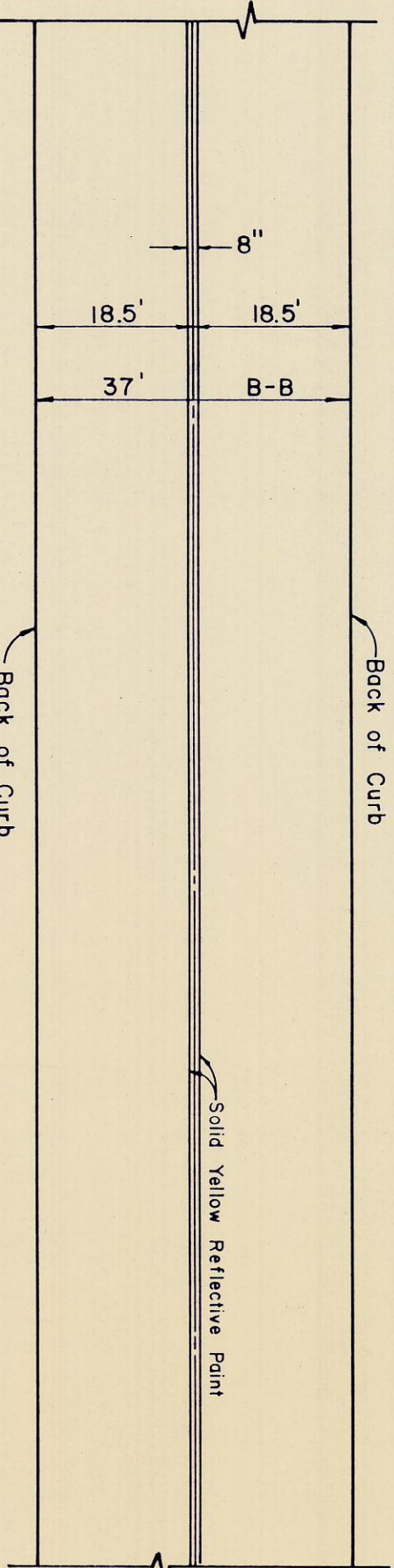
- Notes:
1. HMAC to be designed to obtain minimum stability of 51 and minimum cohesion of 300 in accordance with SDHP Item 340, Type D, as approved by engineer.

2. Prime Coat in accordance with SDHP Item 310, with MC-30 at an application rate of 0.20 to 0.30 gallons per square yard.
3. Edge of new pavement surface to be constructed within 1/8 inch of level with existing pavement.
4. Cement Stabilized Base (CSB), SDHP 274, Type "D", Grade I with strength of 750 PSI at 7 days.
5. Scarify and recompact upper six inches of subgrade to 95 Percent Relative Compaction (Tex 113 E) at or above Optimum Moisture Content.

PLATE 4



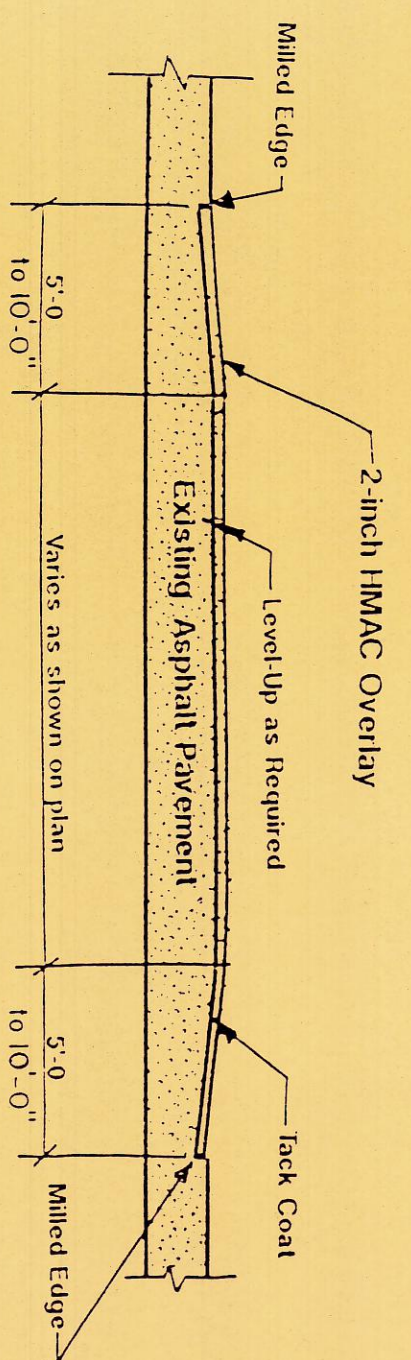
LINDBERG & ADDISON ROAD



AIRPORT PARKWAY

PAVEMENT MARKINGS

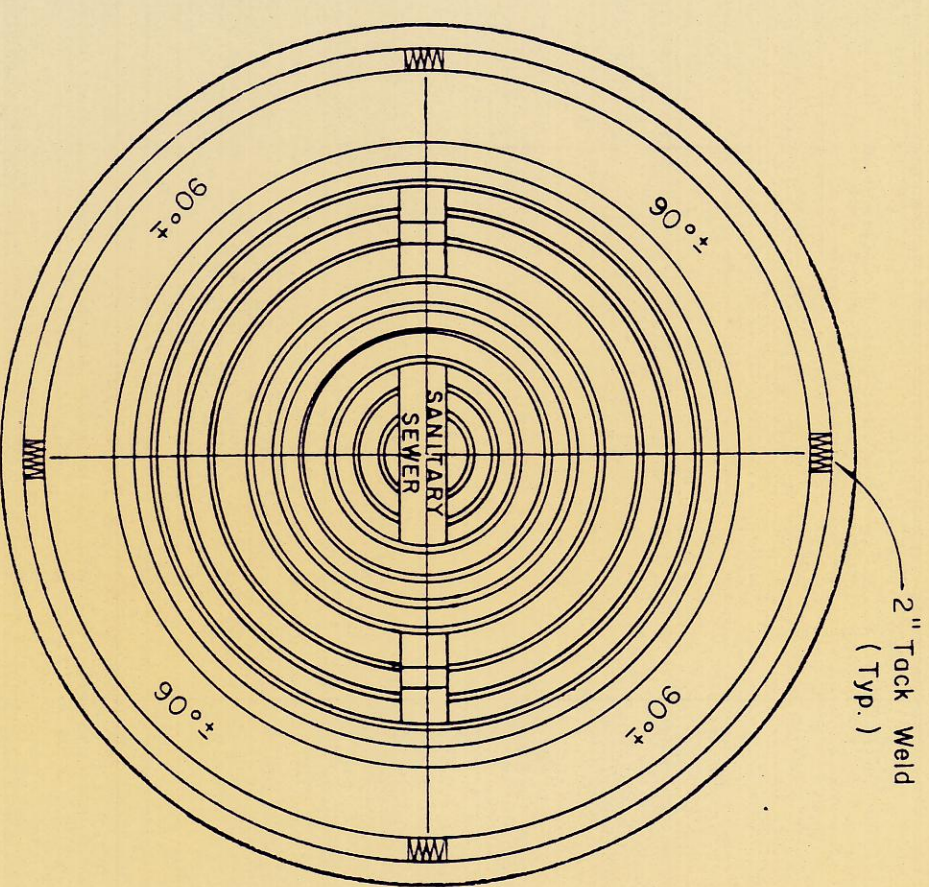
NOTE: PAVEMENT MARKINGS TO MEET THD. 670 STDS.



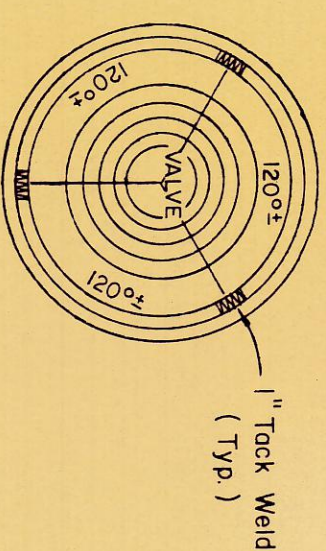
- Notes:
1. HMAC to be designed to obtain minimum stability of 51 and minimum cohesion of 300 in accordance with SDHP Item 340, Type D, as approved by engineer.

2. Back Coat in accordance with SDHP Item 310, with MC-30 at an application rate of 0.05 to 0.10 gallons per square yard.
3. Mill edges 2 inches deep tapering to original pavement surface at 5'-0" width for smooth transition.
4. Level-up course, to consist of HMAC as in note 1, as necessary for grade requirements.

PLATE 3



TYPICAL MANHOLE COVER 24" & LARGER

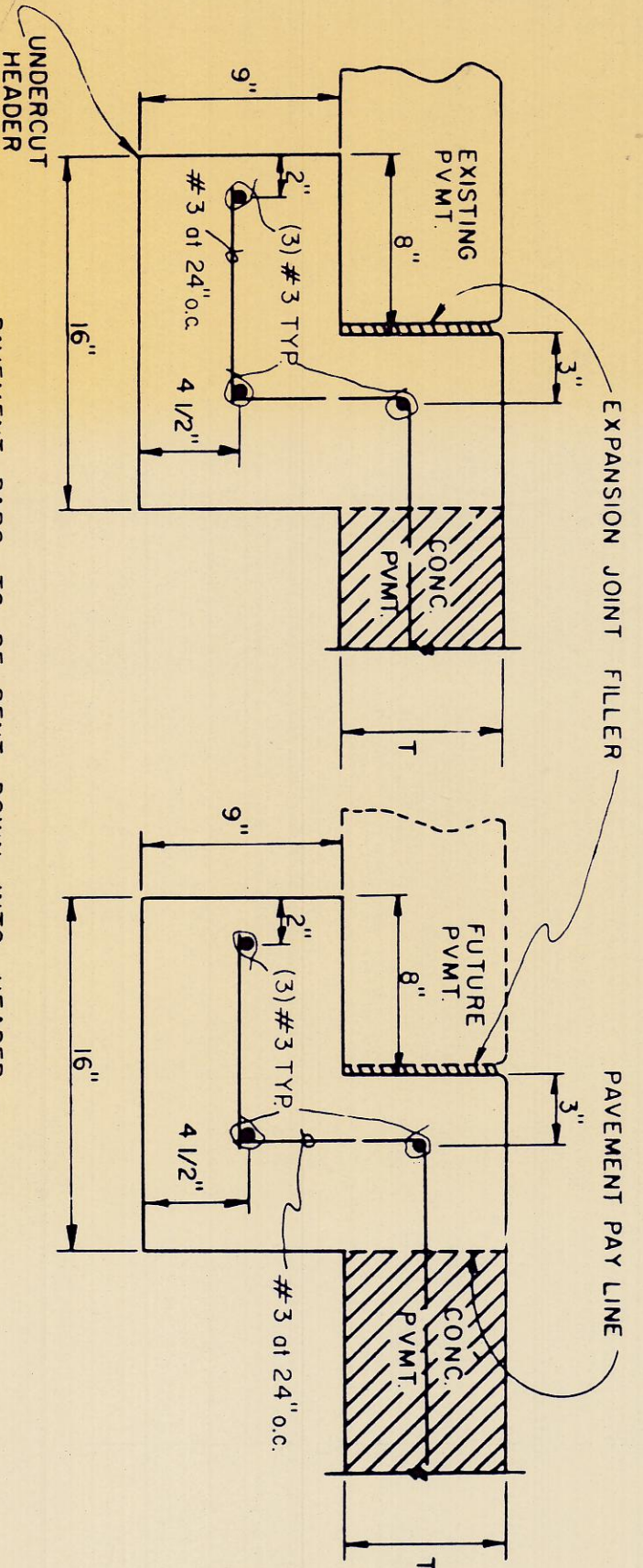


TYPICAL VALVE STACK COVER

GENERAL LAYOUT NOT FOR CONSTRUCTION THESE DRAWINGS ARE INCLUDED TO AID CONTRACTOR IN EVALUATING THE UNIT PRICE BID FOR THE QUANTITIES IN THE BID FORM.

PAVEMENT BARS TO BE BENT DOWN INTO HEADER AND PAVEMENT TO BE MONOLITHIC.

STREET HEADER



305504

STATE OF TEXAS
 COUNTY OF DALLAS
 RANDALL C. HILL
 48234
 1-20-89

GINN, INC.
 Consulting Engineers
 Dallas, Texas
 Job No. - 400
 Sheet 11 of 11

DESIGNED - RCH
 DRAWN - CL
 ONE - DEC 1988
 CHECKED - RCH
 SCALE - 1" = 4'-0"

NO. _____ BY _____ DATE _____

REVISION

TOWN OF ADDISON
 GRAND PRIX OF DALLAS
 IN ADDISON
 MISCELLANEOUS DETAILS