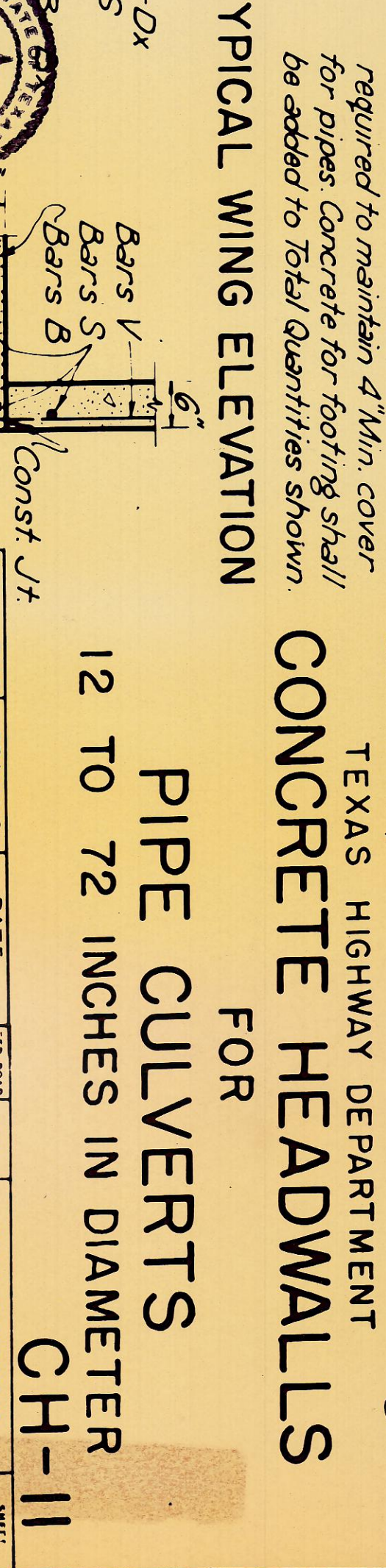
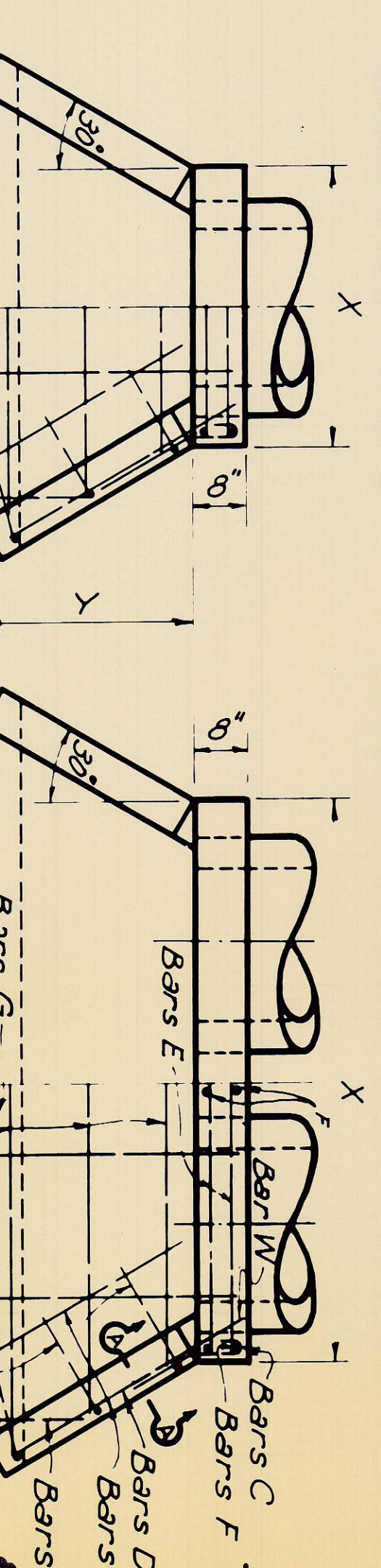
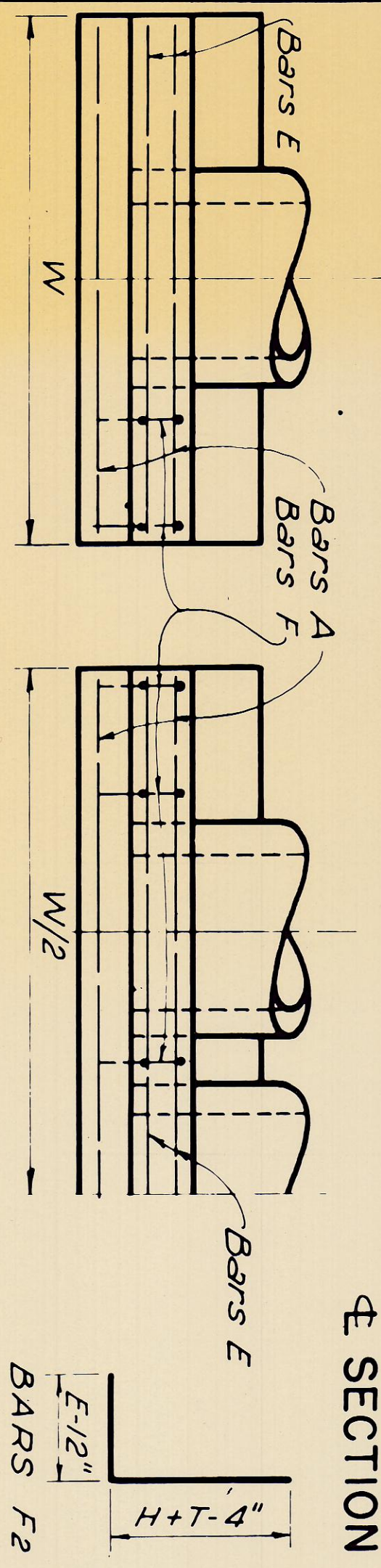
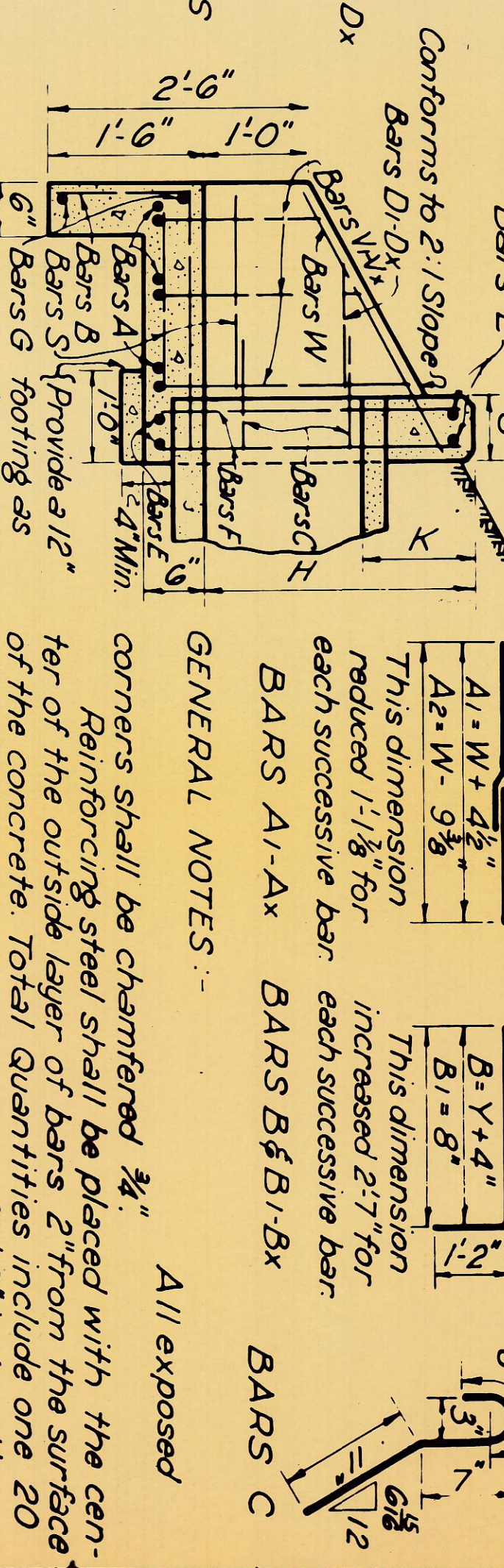
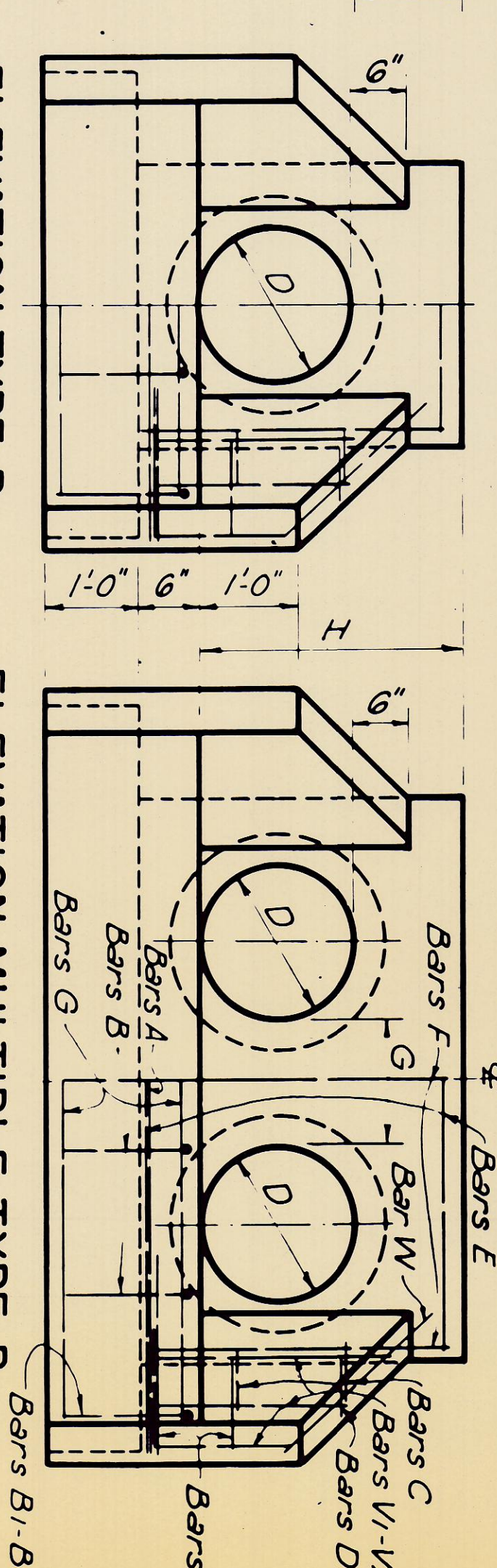
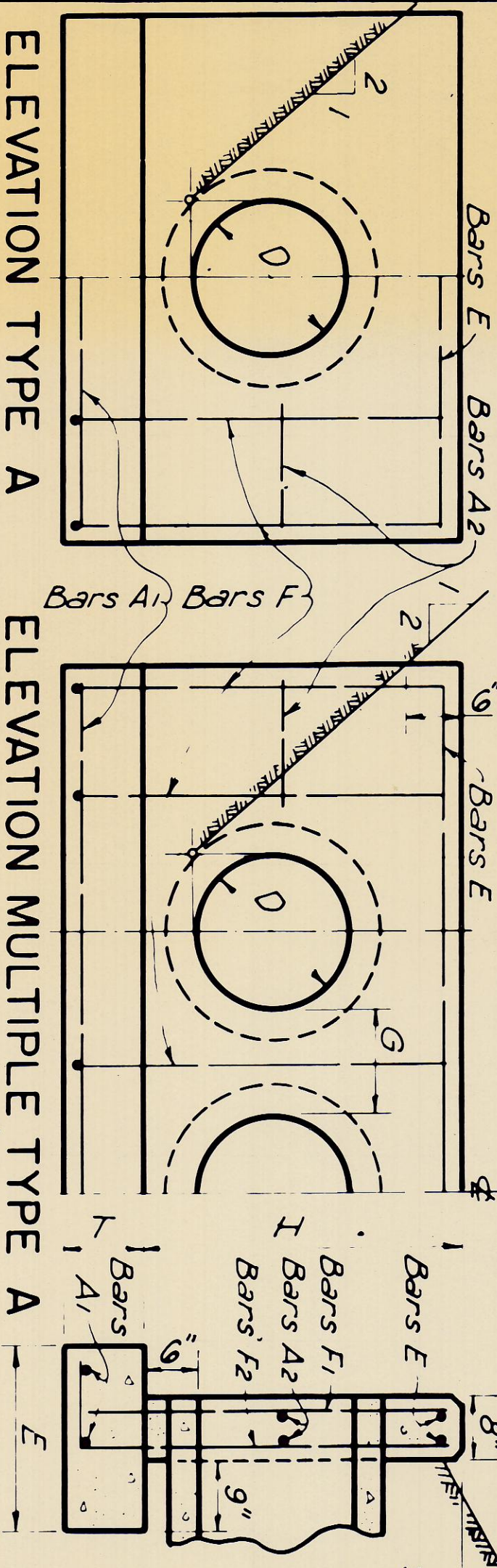


TABLE OF DIMENSIONS AND QUANTITIES FOR TWO TYPE A HEADWALLS

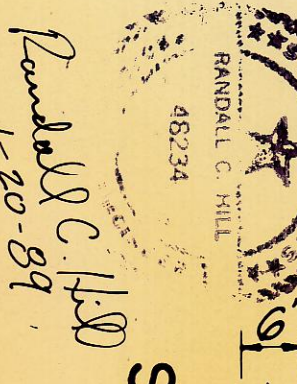
Table with multiple columns: TABLE OF DIMENSIONS OF REINFORCING STEEL AND QUANTITIES FOR TWO TYPE A HEADWALLS, TABLE OF DIMENSIONS AND QUANTITIES FOR TWO TYPE B HEADWALLS, and TOTAL QUANTITIES. Includes various dimensions like K, T, E, H, W and steel quantities like BARS A1-Ax, BARS B, BARS C, etc.



PIPE CULVERTS FOR 12 TO 72 INCHES IN DIAMETER CH-11

CONCRETE HEADWALLS TEXAS HIGHWAY DEPARTMENT

*Concrete Quantities increase slightly for metal pipe installations



Randolph C. Hill 1-20-89

Metadata table with columns: No., Title, Drawing Date, Date, Project No., District, County, Scale, Sheet, Total Sheets, Date of Issue, and Date of Revision.