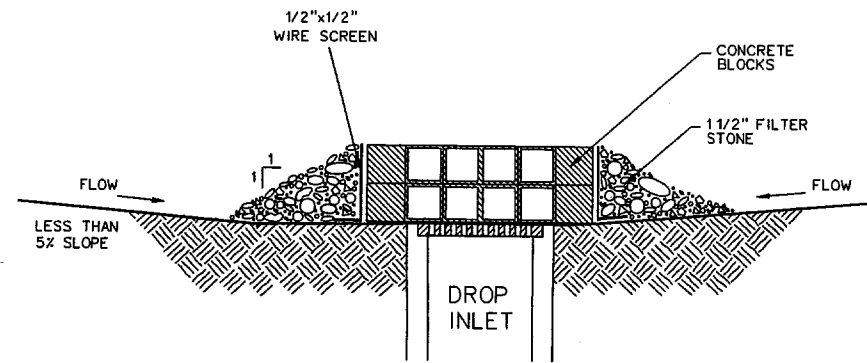
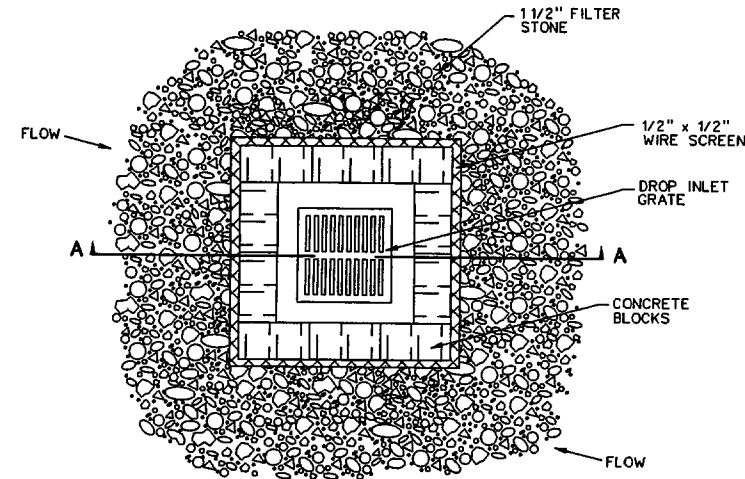


**COMPOST MULCH SOCK  
SEDIMENT TRAP DETAIL**



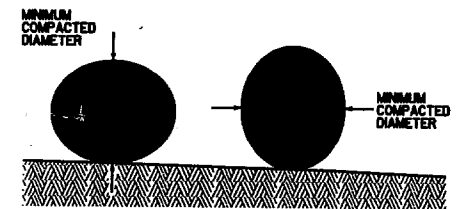
**SECTION A-A**



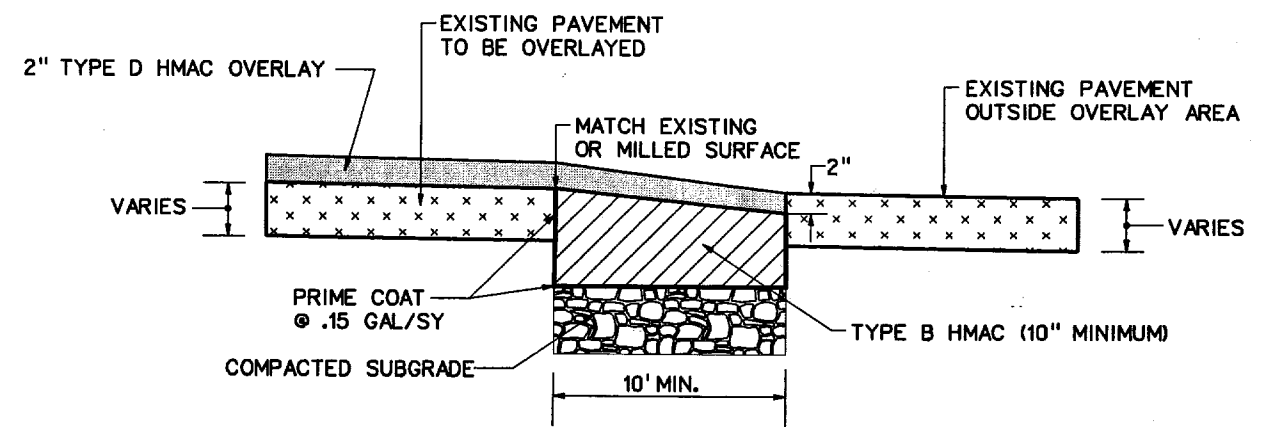
**PLAN VIEW**

**BLOCK/GRAVEL GRATE INLET PROTECTION**

N.T.S.

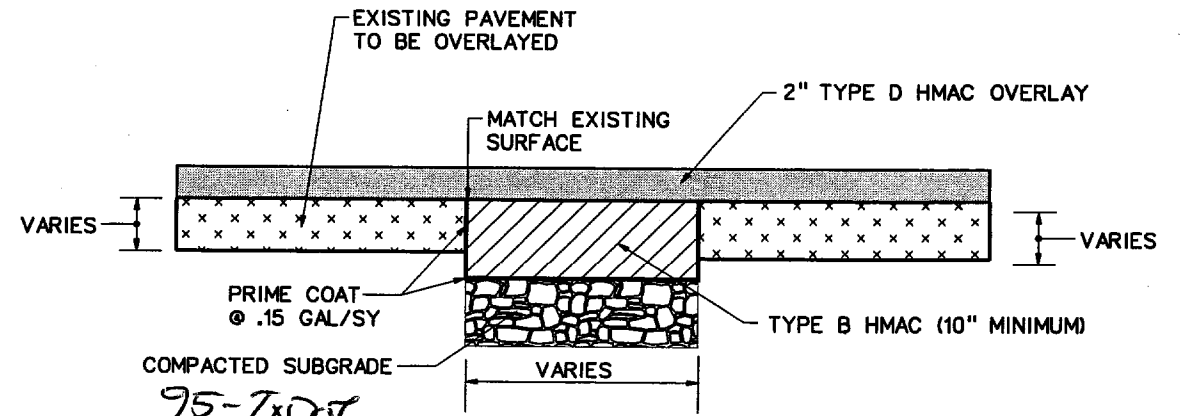


**DIAMETER MEASUREMENTS OF EROSION  
CONTROL DEVICES SPECIFIED IN PLANS**



**FULL DEPTH ASPHALT EDGE REPAIR**

NOT TO SCALE



**FULL DEPTH ASPHALT SPOT REPAIR**

NOT TO SCALE

**SEDIMENT BASIN & TRAP USAGE GUIDELINES**

A sediment trap may be used to precipitate sediment out of runoff draining from an unstabilized area.

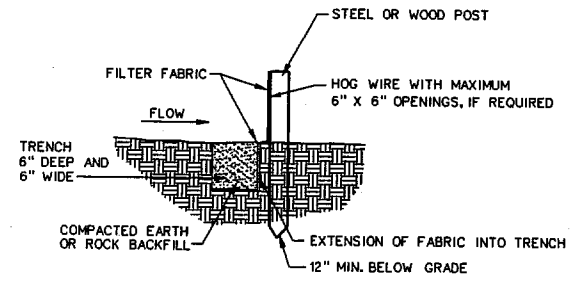
**Traps.** The drainage area for a sediment trap should not exceed 5 acres. The trap capacity should be 1800 CF/Acre (0.5' over the drainage area).

Sediment traps should be placed in the following locations:

1. Within drainage ditches spaced @ 500' on center
2. Immediately preceding ditch inlets
3. Just before the drainage enters a water course
4. Just before the drainage leaves the right of way

The trap should be cleaned when the capacity has been reduced by 1/2 or the sediment has accumulated to a depth of 1', whichever is less.

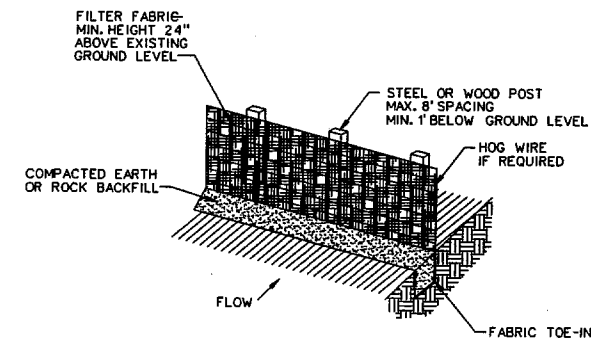
Cleaning and removal of accumulated sediment deposits is incidental and will not be paid for separately.



**SECTION VIEW**

**SILT FENCE**

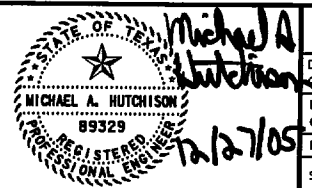
N.T.S.



**ISOMETRIC VIEW**

27-DEC-2005 15:45 G:\11308\Cad\Sheets\rbmtdt01.dgn

NO.	DATE	REVISION	APPROV.	NO.	DATE	REVISION	APPROV.



**HNTB**  
HNTB Corporation  
The HNTB Companies  
Engineers Architects Planners

DESIGN CHECK DEC MAH  
DRAWN CHECK CCH  
DATE DEC. 2005  
SCALE

PROJECT NO. 41508

*Michael A. Hutchison*  
12/2/05



<b>TOWN OF ADDISON</b>		<b>SHEET</b>
ADDISON AIRPORT ASPHALT PAVEMENT IMPROVEMENTS		<b>34 OF 36</b>
<b>MISCELLANEOUS DETAILS</b>		
<b>TOWN OF ADDISON, TEXAS</b>		<b>34</b>