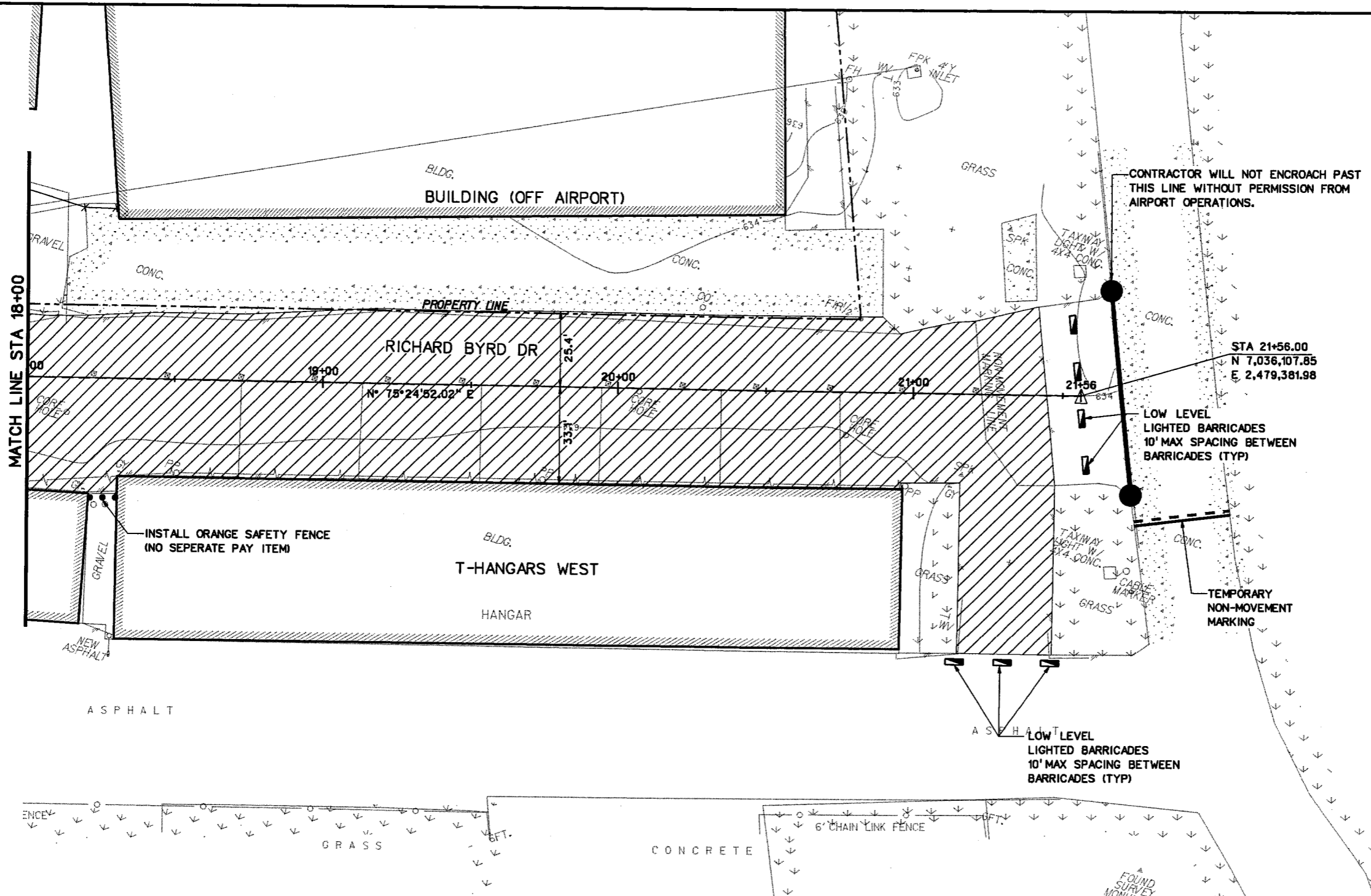


**LEGEND**

- PHASE I
- PHASE II
- GRASS
- LOW LEVEL LIGHTED BARRICADES
- EXISTING ASPHALT PAVEMENT
- EXISTING CONCRETE PAVEMENT
- EXISTING FENCE



**PHASING NOTES:**

1. CONTRACTOR TO VERIFY STAGING AREA LIMITS WITH DAVE FOSTER, ADDISON AIRPORT OPERATIONS AND MAINTENANCE MANAGER 972-392-4852 PRIOR TO START OF CONSTRUCTION ACTIVITIES.
2. CONTRACTOR TO COORDINATE SCHEDULE WITH ADDISON AIRPORT. CONTRACTOR TO CONTACT DAVE FOSTER 14 DAYS PRIOR TO CONSTRUCTION TO ALLOW THE AIRPORT TO CONTACT AIRCRAFT OWNERS TO HAVE HANGARS EMPTY DURING CONSTRUCTION AND ALLOW FOR TEMPORARY RELOCATION OF AIRCRAFT.
3. WORK IN PHASE I AND PHASE II MUST BE COMPLETED CONSECUTIVELY AND IN THE TIME FRAME AS DESCRIBED IN THE SPECIAL PROVISIONS UNDER THE "TIME ALLOTTED FOR COMPLETION" SECTION.
4. WORK IN PHASE II CANNOT BE STARTED UNTIL COMPLETION AND APPROVAL OF WORK IN PHASE I AND REMOVAL OF BARRICADES, AND RELOCATION OF AIRCRAFT.

27-DEC-2005 15:44 G:\41308\Cad\Sheets\rbncp03.dgn

NO.	DATE	REVISION	APPROV.	NO.	DATE	REVISION	APPROV.



**HNTB**  
HNTB Corporation  
The HNTB Companies  
Engineers Architects Planners

DESIGN CHECK DEC MAH  
DRAWN CHECK CCH DEC  
DATE DEC. 2005

PROJECT NO. 41308



<b>TOWN OF ADDISON</b>		SHEET
ADDISON AIRPORT ASPHALT PAVEMENT IMPROVEMENTS		9 OF 36
PHASING PLAN		
RICHARD BYRD DRIVE NORTH		RICHARD BYRD
STA 18+00 TO END		
TOWN OF ADDISON, TEXAS		9