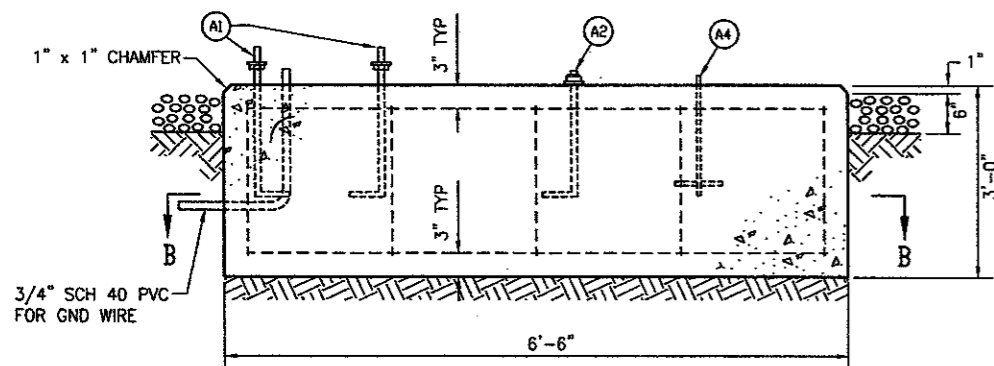
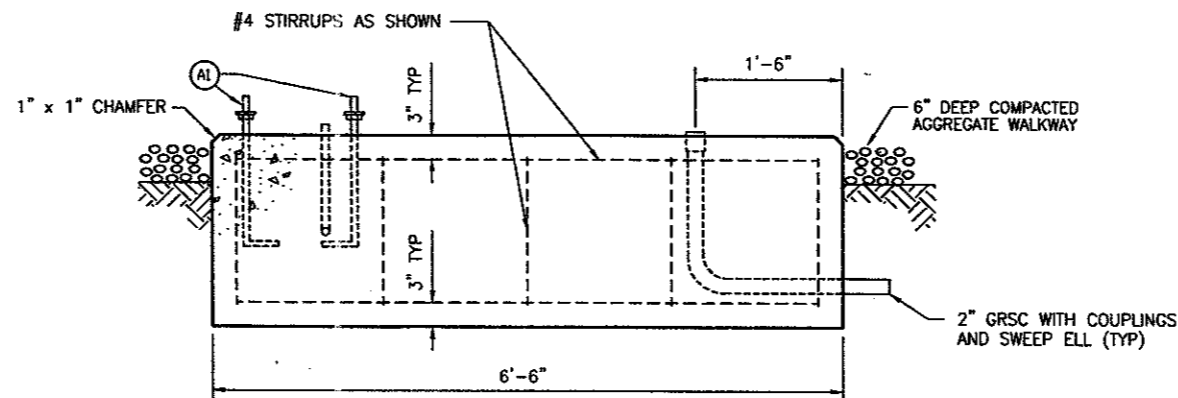


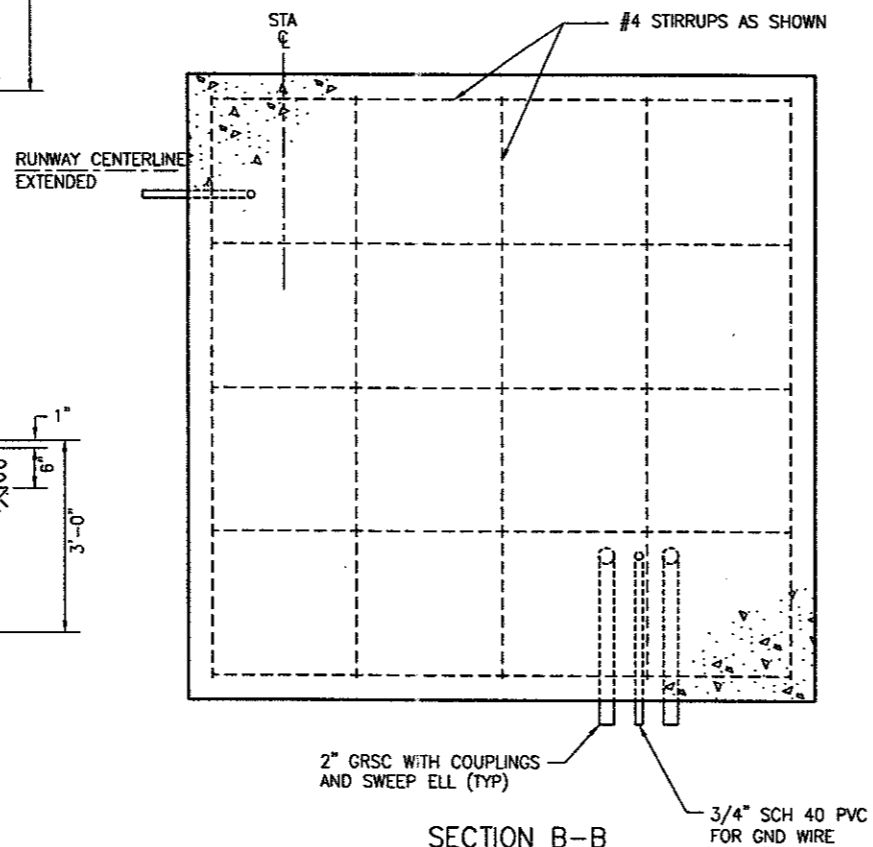
PLAN



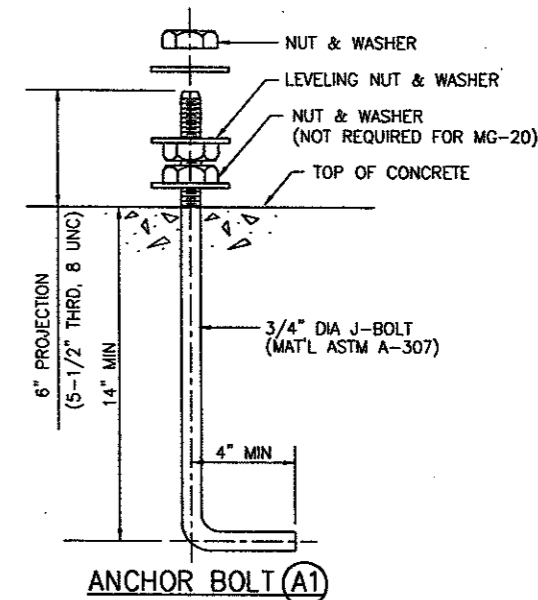
SECTION A-A



NOTE: SEE NOTE 6.  
SECTION C-C

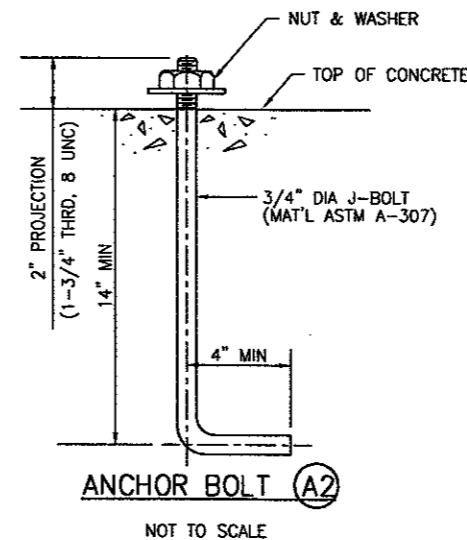


SECTION B-B

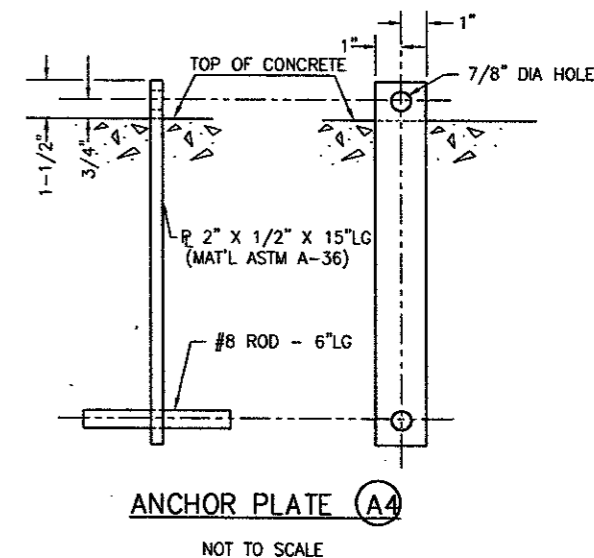


ANCHOR BOLT (A1)  
NOT TO SCALE

NOTE: NUT & WASHER REQUIRED TO PROVIDE RESTRAINT TO THE TILTING DEVICE.



ANCHOR BOLT (A2)  
NOT TO SCALE



ANCHOR PLATE (A4)  
NOT TO SCALE

- NOTES:
1. SECURE ALL ELECTRICAL CONDUITS & ANCHOR BOLTS PRIOR TO PLACING CONCRETE.
  2. PLACE ALL CONCRETE ON UNDISTURBED SOIL OR SELECT BACKFILL COMPACTED TO 95% OF MAXIMUM DENSITY AS DETERMINED BY ASTM D-698. SEE SPECIFICATION P-152, EXCAVATION AND EMBANKMENT.
  3. REINFORCING STEEL PER ASTM A-615, GRADE 40. TIE WIRE SHALL BE 16 GAUGE OR LARGER ANNEALED IRON.
  4. ALL CONCRETE SHALL HAVE A MINIMUM COMPRESSIVE STRENGTH OF 3000 PSI @ 28 DAYS.
  5. ALL STRUCTURAL STEEL, MISCELLANEOUS STEEL, BOLTS, NUTS, AND WASHERS SHALL BE HOT-DIPPED GALVANIZED AND MEET ASTM A-307.
  6. SOME OBJECTS NOT SHOWN.

**RAIL FOUNDATION FOR MG-20 LIR STRUCTURES**  
NOT TO SCALE

PROJECT NAME	ADDISON AIRPORT
DRAWING TITLE	MG-20 RAIL FOUNDATION
DRAWING NO.	E12
DATE	2/9/01
REVISIONS	
BY	
AUTH	
TAG/OT NO.	
BID NO.	
URRG NO.	E701044.00
DESIGN	
DRAWN	
CHECKED	
SCALE	
PRELIMINARY	
DATE	2/2/01
APPROVED	
AWATON ALLIANCE, INC.	
CONSULTING ENGINEERS	
4500 Armon Center Boulevard, Suite 100	
Fort Worth, TX 76165	
WWW.AWATON.COM	