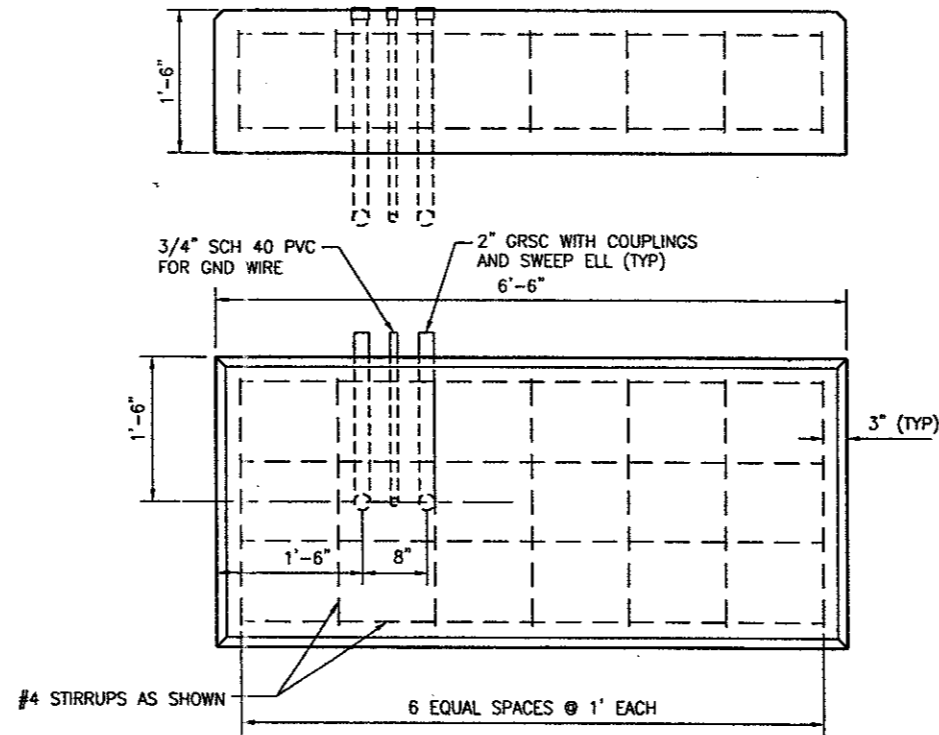
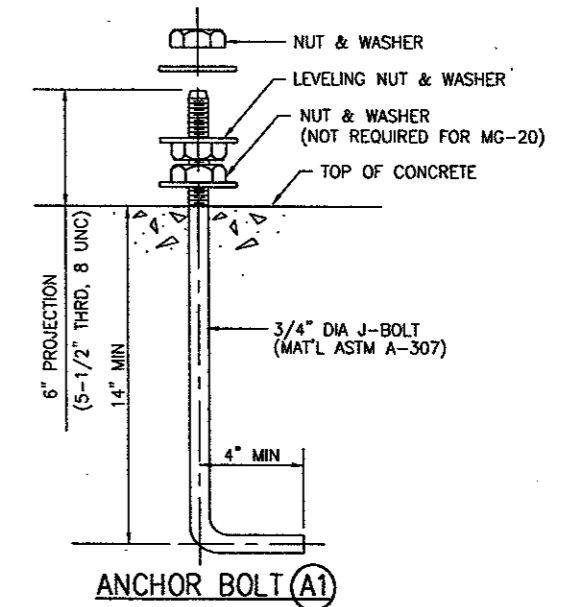


SECTION A-A



RAIL POWER & CONTROL FOUNDATION

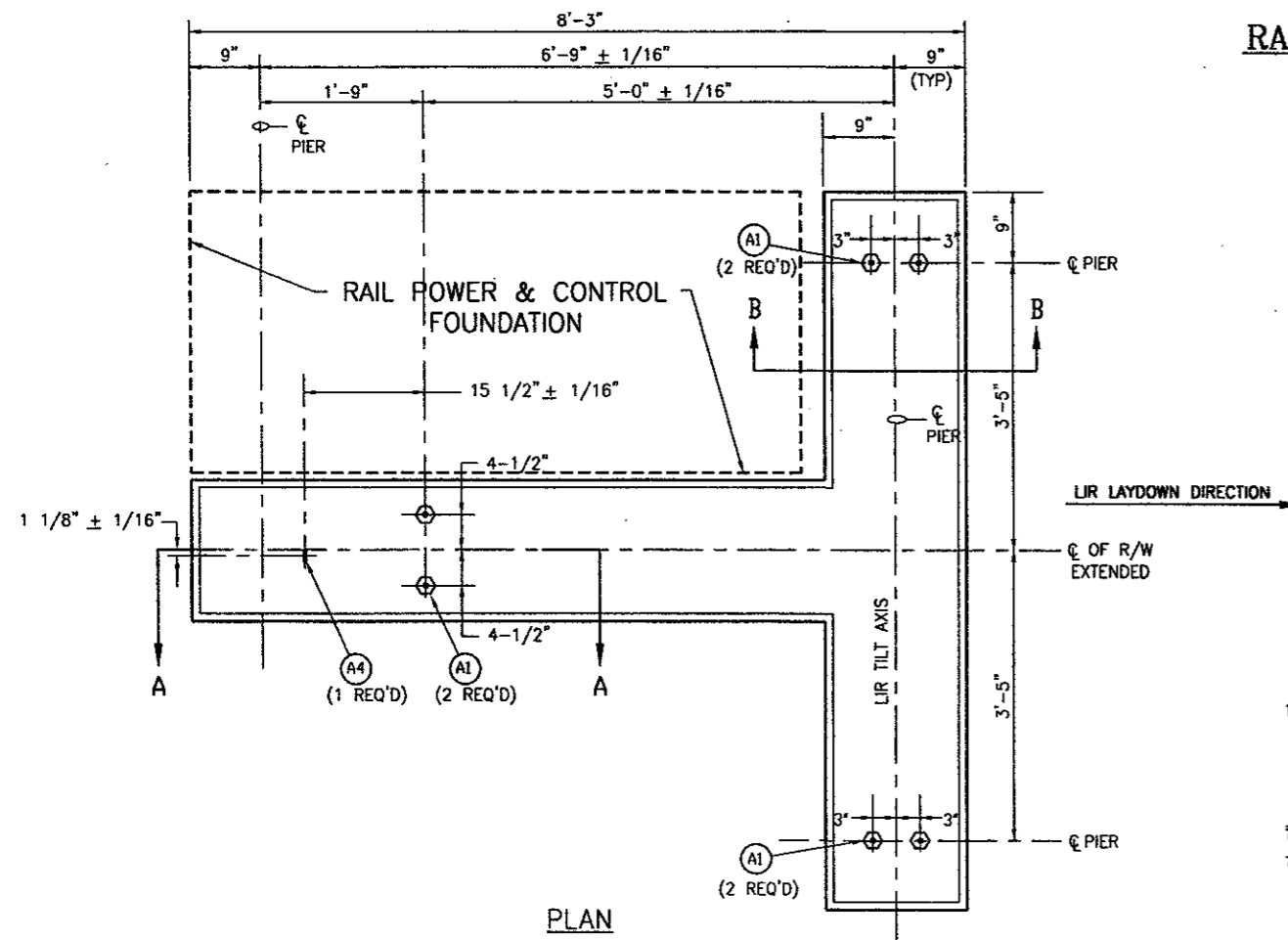
NOT TO SCALE



ANCHOR BOLT (A1)

NOT TO SCALE

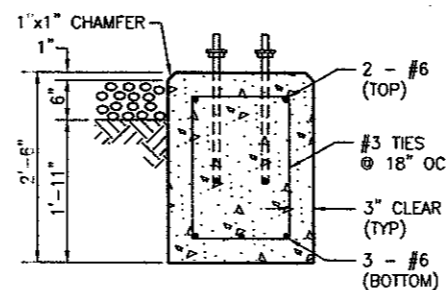
NOTE: NUT & WASHER REQUIRED TO PROVIDE RESTRAINT TO THE TILTING DEVICE.



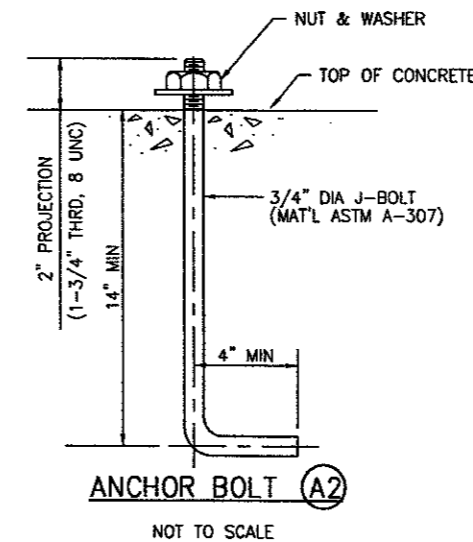
PLAN

FOUNDATION FOR LIR STRUCTURES MG-30

NOT TO SCALE

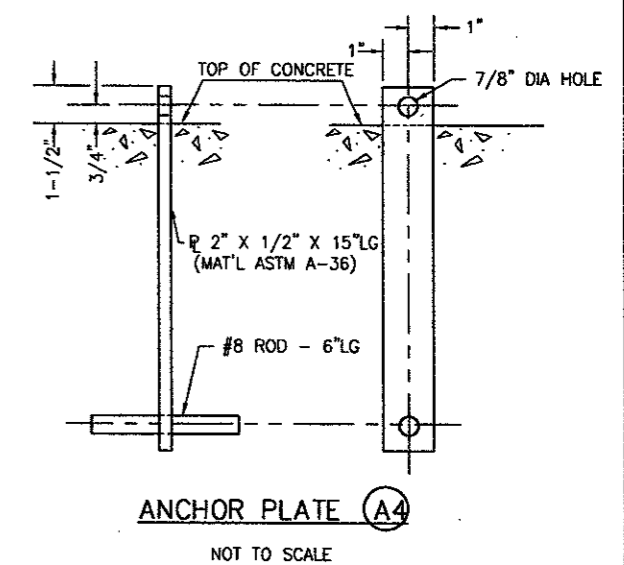


SECTION B-B



ANCHOR BOLT (A2)

NOT TO SCALE



ANCHOR PLATE (A4)

NOT TO SCALE

NOTES:

1. SECURE ALL ELECTRICAL CONDUITS & ANCHOR BOLTS PRIOR TO PLACING CONCRETE.
2. PLACE ALL CONCRETE ON UNDISTURBED SOIL OR SELECT BACKFILL COMPACTED TO 95% OF MAXIMUM DENSITY AS DETERMINED BY ASTM D-698. SEE SPECIFICATION P-152, EXCAVATION AND EMBANKMENT.
3. REINFORCING STEEL PER ASTM A-615, GRADE 40. TIE WIRE SHALL BE 16 GAUGE OR LARGER ANNEALED IRON.
4. ALL CONCRETE SHALL HAVE A MINIMUM COMPRESSIVE STRENGTH OF 3000 PSI @ 28 DAYS.
5. ALL STRUCTURAL STEEL, MISCELLANEOUS STEEL, BOLTS, NUTS, AND WASHERS SHALL BE HOT-DIPPED GALVANIZED AND MEET ASTM A-307.

PROJECT NAME	ADDISON AIRPORT
	RUNWAY 15 ESA GRADING
DRAWING TITLE	MG-30 RAIL FOUNDATION
DRAWING NO.	E12A
DATE	2/9/01
DESIGNER	ANTON ALLIANCE, INC.
CHECKED	ANTON ALLIANCE, INC.
DATE	2/2/01
APPROVED	ANTON ALLIANCE, INC.
SCALE	AS SHOWN
TRACED NO.	
BID NO.	
URBG NO.	E701044.00
DESIGN	
DRAWN	
CHECKED	
DATE	
REVISIONS	
BY	
AUTH.	