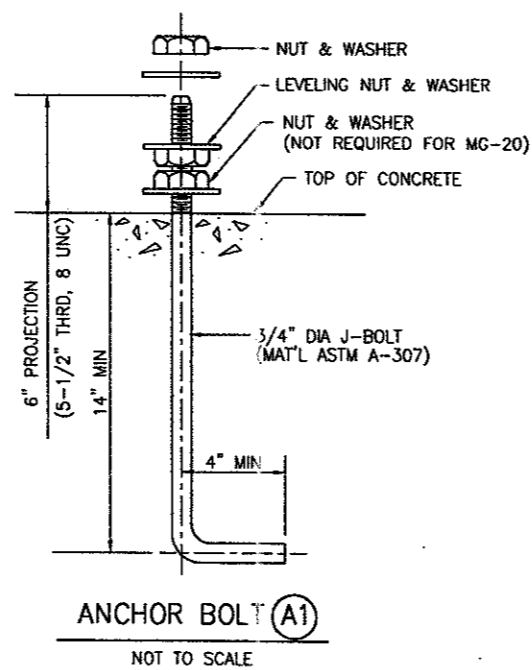
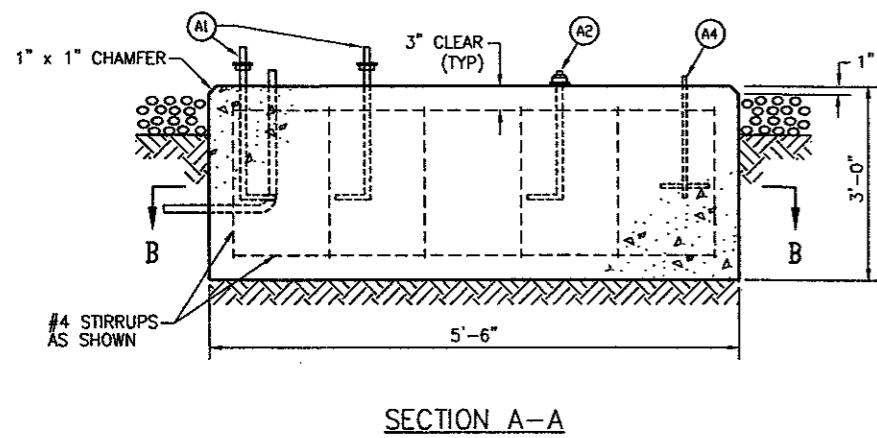
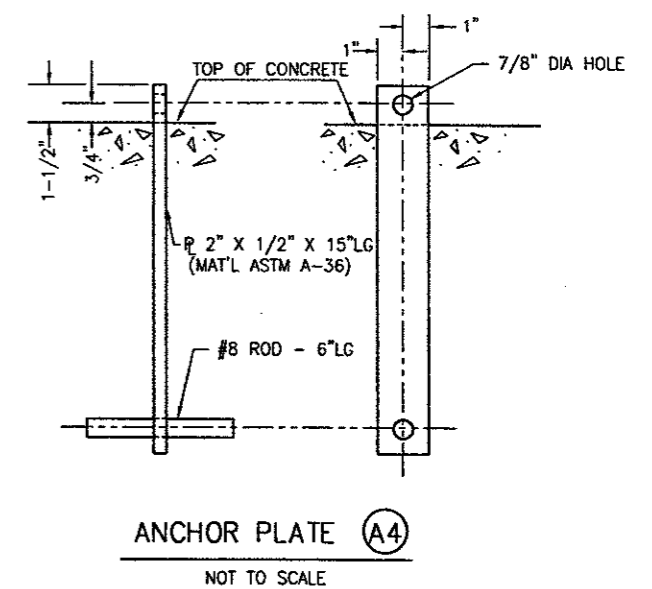
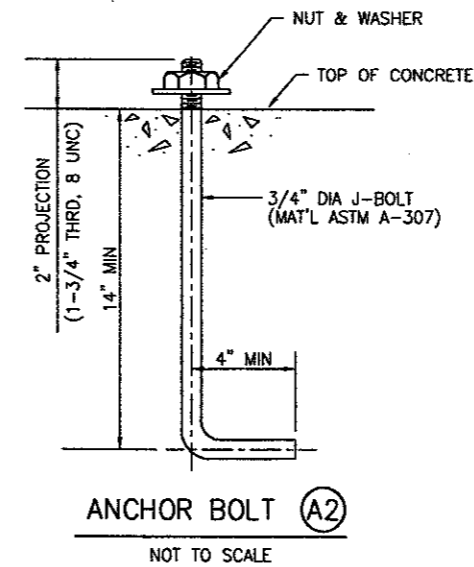


MALS FOUNDATION FOR MG-20 LIR STRUCTURES
NOT TO SCALE



NOTE: NUT & WASHER REQUIRED TO PROVIDE RESTRAINT TO THE TILTING DEVICES.



- NOTES:
1. SECURE ALL ELECTRICAL CONDUITS & ANCHOR BOLTS PRIOR TO PLACING CONCRETE.
 2. PLACE ALL CONCRETE ON UNDISTURBED SOIL, OR SELECT BACKFILL COMPACTED TO 95% OF MAXIMUM DENSITY AS DETERMINED BY ASTM D-698. SEE SPECIFICATION P-152, EXCAVATION AND EMBANKMENT.
 3. REINFORCING STEEL PER ASTM A-615, GRADE 40. TIE WIRE SHALL BE 16 GAUGE OR LARGER ANNEALED IRON.
 4. ALL CONCRETE SHALL HAVE A MINIMUM COMPRESSIVE STRENGTH OF 3000 PSI @ 28 DAYS.
 5. ALL STRUCTURAL STEEL, MISCELLANEOUS STEEL, BOLTS, NUTS, AND WASHERS SHALL BE HOT-DIPPED GALVANIZED AND MEET ASTM A-307.

PROJECT NAME	ADDISON AIRPORT
DRAWING TITLE	MG-20 MALS FOUNDATION
DRAWING NO.	E11
DATE	2/18/01
REVISIONS	
BY	AUTL
DATE	
TRDPT NO.	
BID NO.	
URBID NO.	E701044.00
DESIGN	
DRAWN	
CHECKED	
SCALE	
PRELIMINARY	APPROVED
NOT FOR CONSTRUCTION	
DATE OF ISSUE	
FOR	
AVIATION ALLIANCE, INC.	
CONSULTING ENGINEERS	
4100 Armon Carter Boulevard, Suite 108	
Fort Worth, TX 76155	
www.aaia.com	