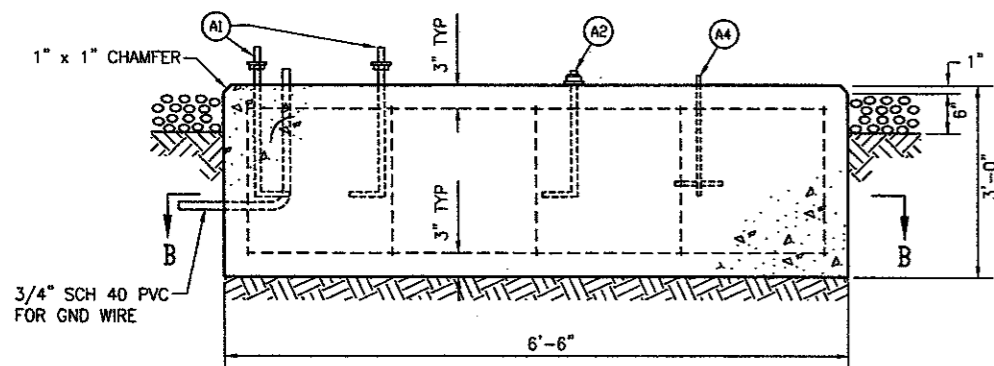
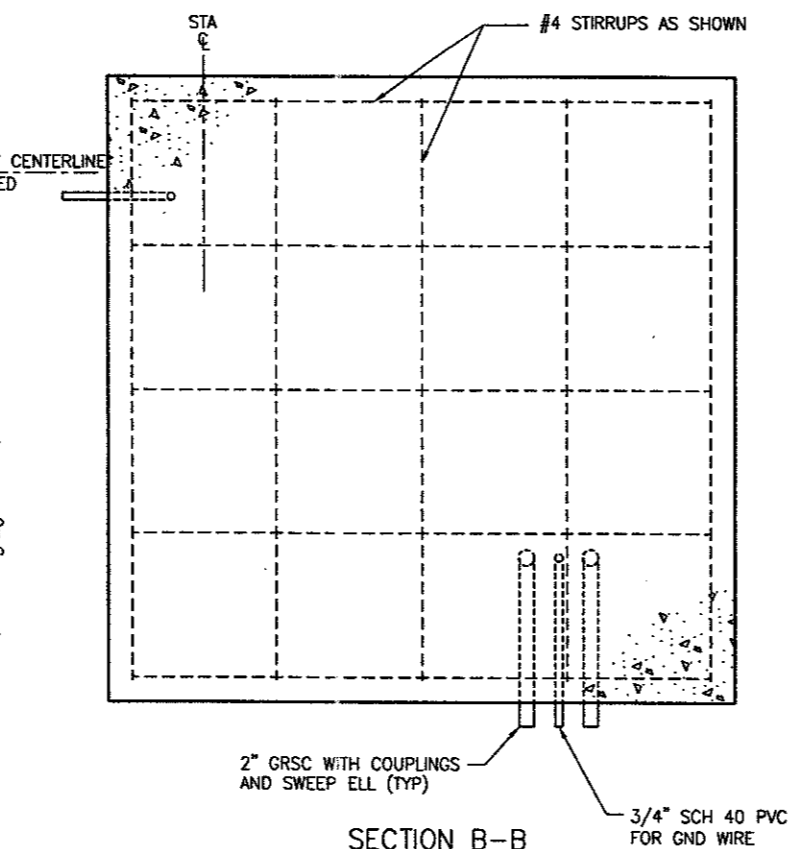


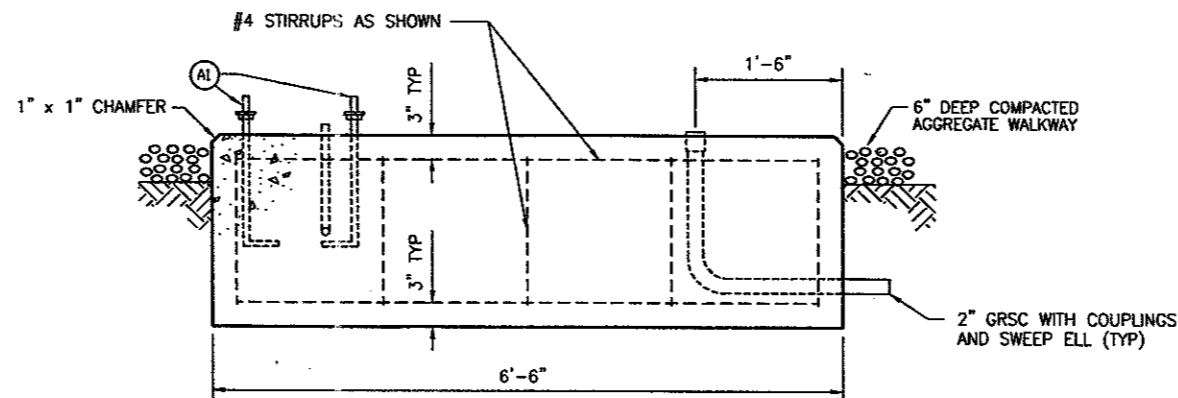
PLAN



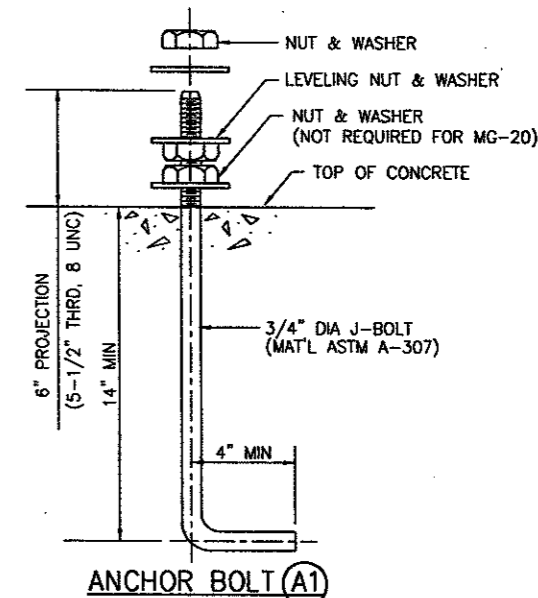
SECTION A-A



SECTION B-B

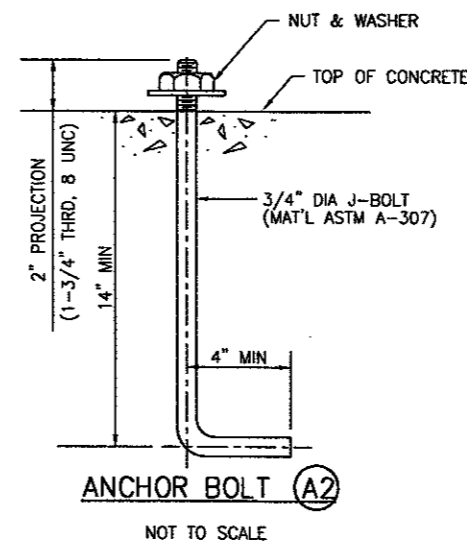


SECTION C-C



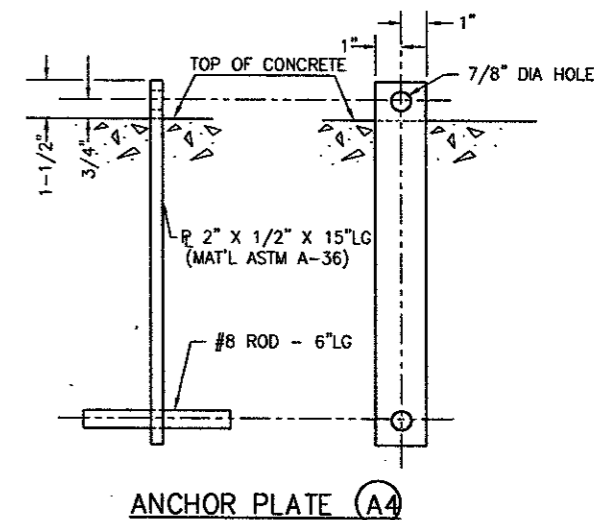
ANCHOR BOLT (A1)

NOTE: NUT & WASHER REQUIRED TO PROVIDE RESTRAINT TO THE TILTING DEVICE.



ANCHOR BOLT (A2)

NOT TO SCALE



ANCHOR PLATE (A4)

NOT TO SCALE

- NOTES:
1. SECURE ALL ELECTRICAL CONDUITS & ANCHOR BOLTS PRIOR TO PLACING CONCRETE.
 2. PLACE ALL CONCRETE ON UNDISTURBED SOIL OR SELECT BACKFILL COMPACTED TO 95% OF MAXIMUM DENSITY AS DETERMINED BY ASTM D-698. SEE SPECIFICATION P-152, EXCAVATION AND EMBANKMENT.
 3. REINFORCING STEEL PER ASTM A-615, GRADE 40. TIE WIRE SHALL BE 16 GAUGE OR LARGER ANNEALED IRON.
 4. ALL CONCRETE SHALL HAVE A MINIMUM COMPRESSIVE STRENGTH OF 3000 PSI @ 28 DAYS.
 5. ALL STRUCTURAL STEEL, MISCELLANEOUS STEEL, BOLTS, NUTS, AND WASHERS SHALL BE HOT-DIPPED GALVANIZED AND MEET ASTM A-307.
 6. SOME OBJECTS NOT SHOWN.

RAIL FOUNDATION FOR MG-20 LIR STRUCTURES

NOT TO SCALE

| | |
|--|-----------------------|
| PROJECT NAME | ADDISON AIRPORT |
| DRAWING TITLE | MG-20 RAIL FOUNDATION |
| DRAWING NO. | E12 |
| DATE | 2/9/01 |
| BY | |
| REVISIONS | |
| DATE | |
| TAG/OT NO. | |
| BID NO. | |
| URRG NO. | E701044.00 |
| DESIGN | |
| DRAWN | |
| CHECKED | |
| SCALE | |
| PRELIMINARY | |
| DATE | 2/2/01 |
| APPROVED | |
| AWATON ALLIANCE, INC. | |
| CONSULTING ENGINEERS | |
| 4500 Armon Center Boulevard, Suite 100 | |
| Fort Worth, TX 76165 | |
| WWW.AWATON.COM | |