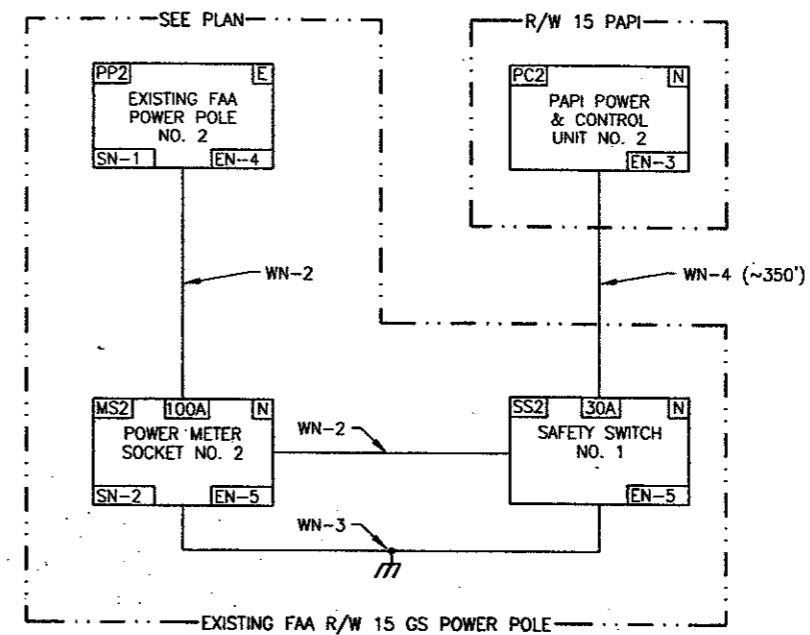


R/W 33 PAPI POWER SERVICE



R/W 15 PAPI POWER SERVICE

**SHEET NOTES (SN-#):**

- EXISTING TXUEG POWER SERVICE POLE. SEE PLAN SHEETS FOR LOCATION. CONTACT GREG HILTON AT TEL. NO. (972) 888-1343 TO COORDINATE NEW POWER SERVICE INSTALLATION WITH TXUEG.
- SEE SHEET E13 FOR ADDITIONAL INFORMATION.

**EQUIPMENT NOTES (EN-#):**

- EXISTING TXUEG 120/240 VAC POWER SERVICE POLE LOCATED BETWEEN AIRTEX TOOL AND HOWARD TWITCHELL OFFICE BUILDINGS. THE AREA BETWEEN POLE AND ADS FENCE IS CONCRETE. SEE PLAN FOR ADDITIONAL DATA.
- CONTRACTOR SHALL FURNISH AND INSTALL A 100A METER SOCKET AND 30 AMPERE HEAVY DUTY SAFETY SWITCH ON A CONCRETE PAD-MOUNTED POWER PEDESTAL. SEE DETAIL SHEET E13. THE CONCRETE PAD SHALL BE 5' INSIDE THE ADS BOUNDARY LINE. THE METER SOCKET SHALL BE PER TXUEG SPECIFICATIONS. SS1 & SS2 SHALL BE SQUARE D CAT. NO. H22INRB OR APPROVED EQUIVALENT AND SHALL BE COMPLETE WITH 30 AMPERE FUSES AND 2 SPARE FUSES PLACED INSIDE THE DISCONNECT.
- 4 BOX PAPI CONTROL UNIT. SEE PLANS, SPECIFICATIONS, AND DETAIL SHEETS.
- EXISTING FAA POWER SERVICE POLE FOR EXISTING R/W 15 GLIDE SLOPE (GS) SITE. SEE PLAN SHEET(S).
- FURNISH AND INSTALL 100 AMPERE METER SOCKET AND 30 AMPERE HEAVY DUTY SAFETY SWITCH ON THE EXISTING FAA POWER SERVICE POLE. MOUNT EQUIPMENT ON THE OPPOSITE SIDE OF THE POLE FROM THE EXISTING FAA METER AND DISCONNECT. THE METER SOCKET AND DISCONNECT SHALL BE THE SAME AS SPECIFIED IN EN-2 EXCEPT FOR THE MOUNTING LOCATION.

**WIRE NOTES (WN-#):**

- FURNISH AND INSTALL 3-1/C #6 AWG 600V USE IN 2" PVC EXCEPT ALL SWEEPS AND RISERS SHALL BE GRSC. THE AREA BETWEEN THE TXUEG SERVICE POLE AND THE ADS FENCE IS CONCRETE, WHICH SHALL BE SAWCUT AND REFINISHED TO INSTALL THE CONDUIT. INSTALL 1 SPARE 2" CONDUIT STRUCTURE BETWEEN PP1 AND MS1 AND CAP 1' ABOVE FINISHED GRADE. THE EXISTING SERVICE POLE CONDUIT SHALL BE CAPPED 10' ABOVE GRADE ON THE EXISTING POWER SERVICE POLE FOR TXUEG'S SUBSEQUENT ELECTRICAL SERVICE INSTALLATION.
- 3-1/C #6 AWG 600V USE [ & 1-1/C #8 600V EQUIPMENT GROUNDING CONDUCTOR] IN 2" GRSC.
- 1-#8 AWG EQUIPMENT GROUNDING CONDUCTOR IN 0.5" GRSC ABOVE GRADE. ALL BELOW GRADE CONNECTIONS SHALL BE MADE WITH EXOTHERMIC COPPER WELDS. GROUND SOLID NEUTRAL IN SS1. INSTALL #8 AWG EQUIPMENT GROUNDING CONDUCTOR TO ALL DEVICES. SEE LEGEND.
- 3-1/C #6 AWG 600V USE AND 1-1/C #8 EQUIPMENT GROUNDING CONDUCTOR IN 2" PVC CONDUIT. ALL SWEEPS AND RISERS SHALL BE 2" GRSC.

**LEGEND**

- |                   |   |   |
|-------------------|---|---|
| A                 | B | C |
| SHORT DESCRIPTION |   |   |
| D                 | E |   |
- A = DEVICE I.D.
  - B = MAINS CB, FUSED AT X AMPERES, RATED KVA, CONNECTED LOAD, ETC.
  - C = EXISTING, NEW, ETC.
  - D = SEE SHEET NOTE (SN-#)
  - E = SEE EQUIPMENT NOTE (EN-#)
- ⏏ = CONNECT EQUIPMENT GROUND CONDUCTOR TO EXISTING SYSTEM GROUND USING NO. 8 AWG. FURNISH AND INSTALL 3/4" x 10' COPPER CLAD GROUND ROD AND NO. 8 AWG EQUIPMENT GROUNDING CONDUCTORS. SEE NEC 250-92, 250-94, AND 250-95. ALL BELOW GRADE CONNECTIONS SHALL BE MADE USING COPPER EXOTHERMIC WELDS.
  - (~XXXX') = APPROXIMATELY XXXX FEET
  - ADS = ADDISON AIRPORT IDENTIFIER
  - BSDC = BARE SOFT DRAWN COPPER
  - CB = CIRCUIT BREAKER(S)
  - CL = CENTERLINE
  - DEB = DIRECT EARTH BURIAL
  - [E] = EXISTING DEVICE(S)
  - GRSC = GALVANIZED RIGID STEEL CONDUIT
  - [MS1] = METER SOCKET NO. 1 (TYP)
  - [SS1] = SAFETY SWITCH NO. 1 (TYP)
  - TXUEG = TEXAS UTILITIES ELECTRIC & GAS

**1**  
E20 **BLOCK AND CABLE DIAGRAM R/W 15-33 4-BOX PAPI'S**  
NOT TO SCALE

PROJECT NAME	<b>RUNWAY 15 ESA GRADING</b>
DRAWING TITLE	<b>BLOCK &amp; CABLE DIAGRAMS POWER SERVICE</b>
DRAWING NO.	<b>E20</b>
DATE	2/9/01
REVISIONS	
DATE	
TARGET NO.	
BID NO.	
URS# NO.	E701044.00
DESIGN	
DRAWN	
CHECKED	
SCALE	
<p>PRELIMINARY NOT FOR CONSTRUCTION UNLESS OTHERWISE NOTED</p> <p>AVATON ALLIANCE, INC. A. S. BROWN, P.E. 4100 Amon Carter Boulevard, Suite 108 Fort Worth, TX 76155 www.urscorp.com</p> <p>APPROVED</p>	
<p><b>ADDISON AIRPORT</b></p> <p>URS Greiner Woodward Clyde 4100 Amon Carter Boulevard, Suite 108 Fort Worth, TX 76155 www.urscorp.com</p>	