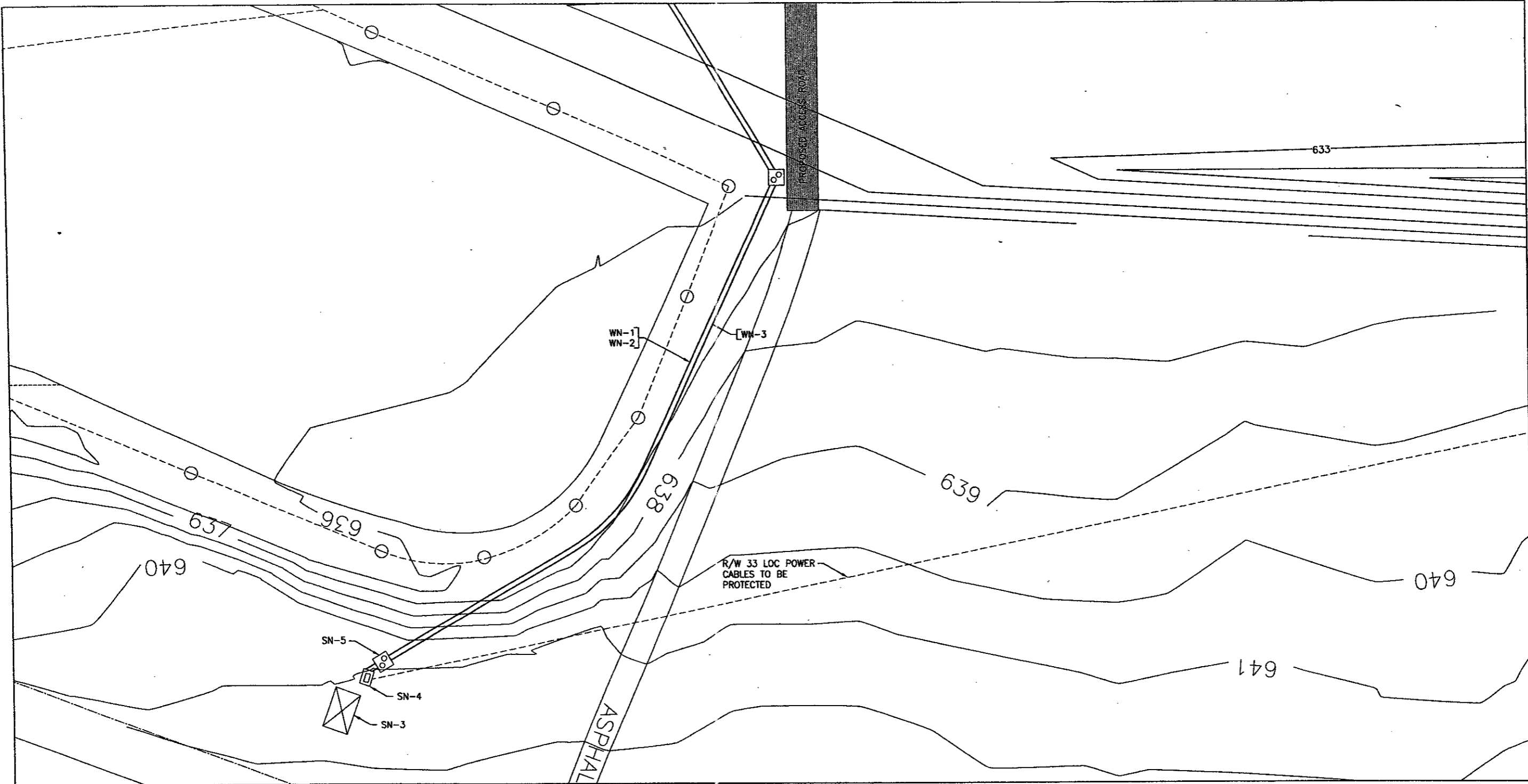


MATCH LINE SHEET E4



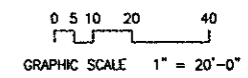
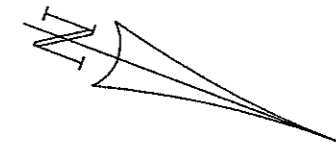
SHEET NOTES (SN-#):

1. CONTROL CABLE AND POWER CABLE SHALL NOT BE INSTALLED IN THE SAME CONDUIT.
2. SEE DETAIL SHEETS FOR CONDUIT DETAILS AT EACH STATION.
3. EXISTING MALS STORAGE BUILDING (UNVERIFIED).
4. EXISTING MALS POWER AND CONTROL PEDESTAL.
5. MALS POWER & CONTROL PEDESTAL JUNCTION CAN PLAZA. EXTEND EXISTING PEDESTAL CONDUIT TO PLAZA AS REQUIRED.
6. SEE MALS ELECTRICAL DETAILS SHEET 1 OF 2.

LEGEND	
	JUNCTION CAN
	2" SCH 40 PVC CONDUIT (DEB)
	JUNCTION CAN PLAZA
	CONCRETE ENCASED DUCT

WIRE NOTES (WN-#):

1. 3-1/C #2 AWG 600V TO DISTRIBUTION PANEL.
2. 3-1/C #2 AWG 600V (RAIL POWER).
3. 6 PAIR #19 AWG 600V (RAIL CONTROL). SEE SN-1.



PROJECT NAME RUNWAY 15 ESA GRADING	ADDISON AIRPORT URS Greiner Woodward Clyde 4100 Armon Center Boulevard, Suite 108 Fort Worth, TX 76185 www.urscorp.com	PRELIMINARY NOT FOR CONSTRUCTION EXCEPT AS SHOWN AVIATION ALLIANCE, INC. U.S. STATE #2678 DATE: 2/2/01 APPROVED	REVISIONS BY: LAUTZ DATE:	TRIBUT NO. BID NO. E701044.00 USGS NO. DESIGN DRAWN CHECKED SCALE
DRAWING TITLE R/W 15 PROPOSED MALS LAYOUT - SHEET 4 OF 4	DRAWING NO. E7	DATE 2/8/01		