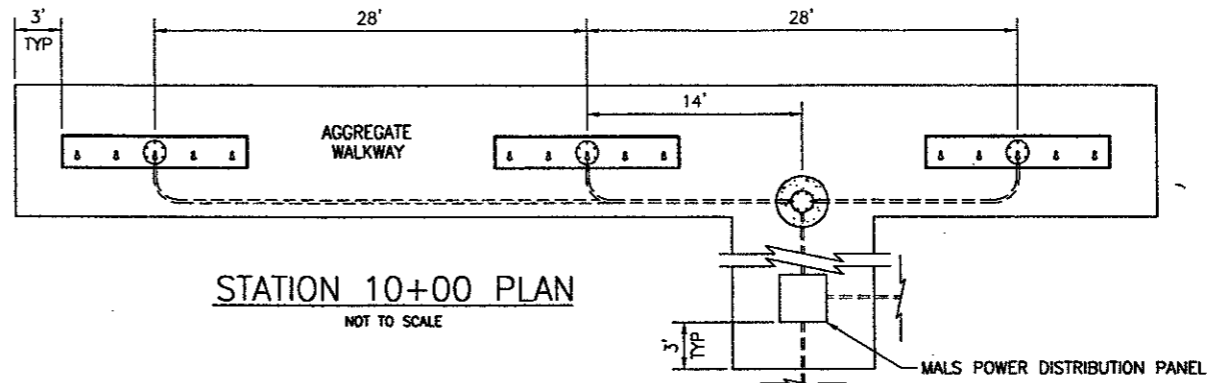
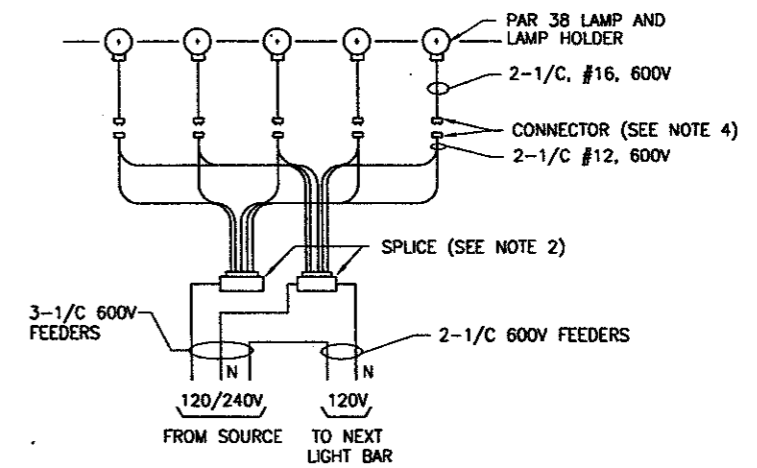


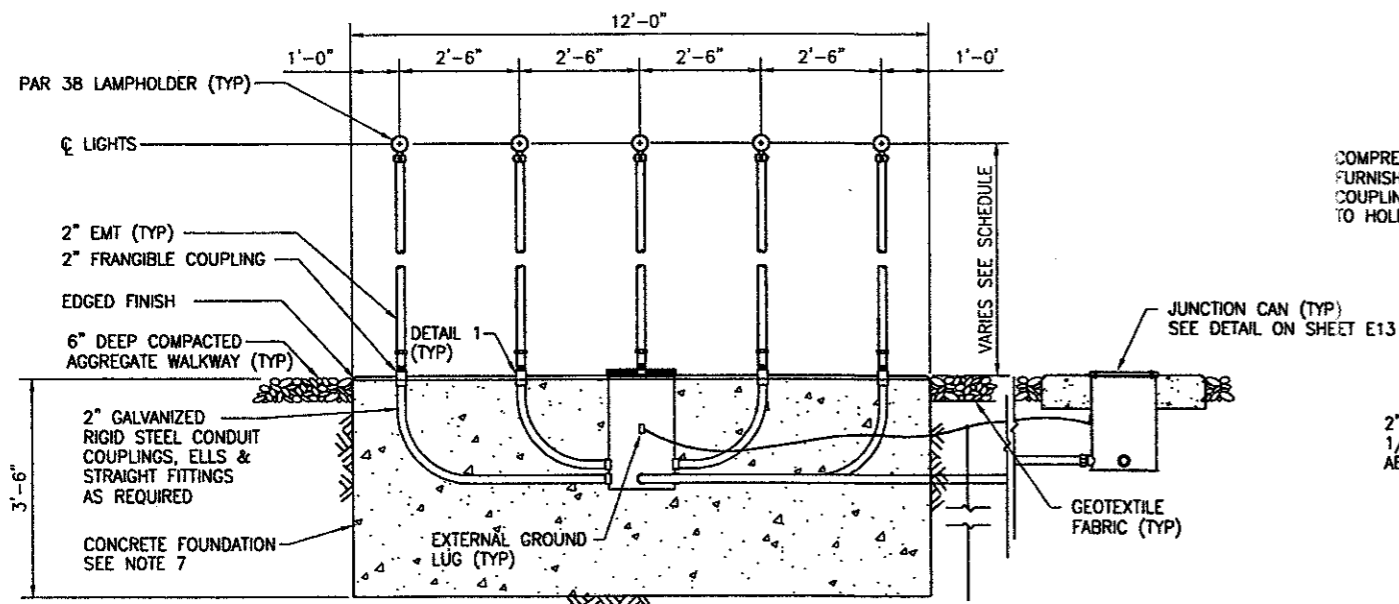
PLAN - EMT MALS STRUCTURE  
NOT TO SCALE



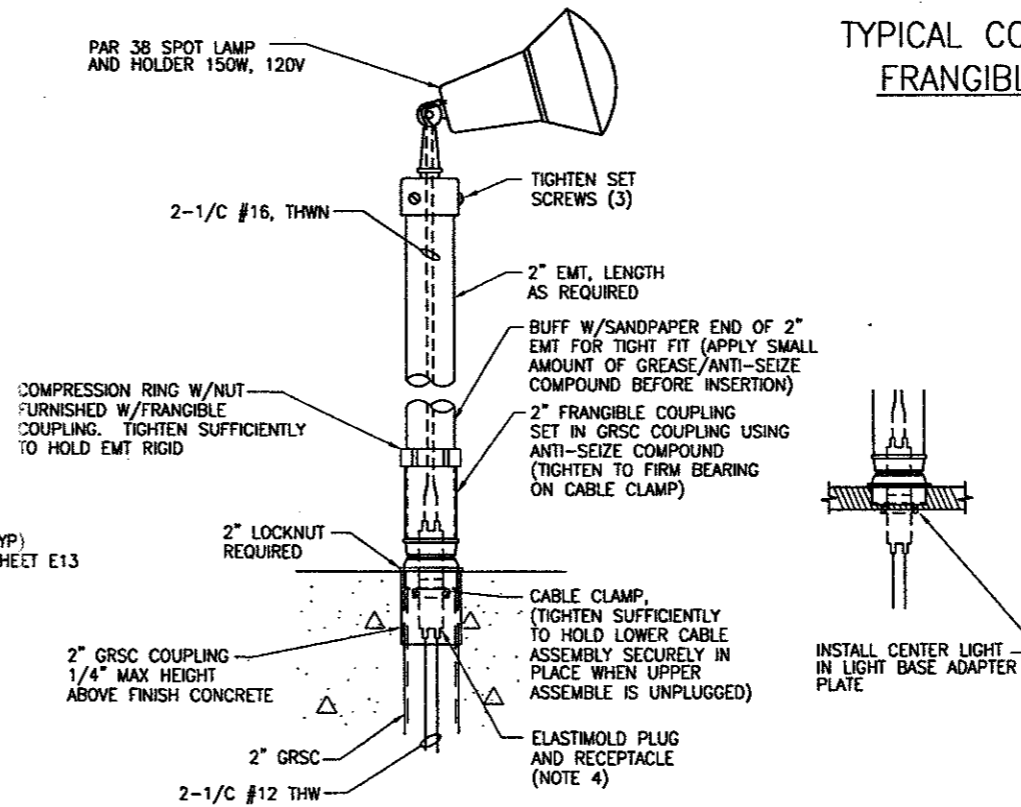
STATION 10+00 PLAN  
NOT TO SCALE



TYPICAL CONNECTIONS FOR FRANGIBLE LIGHT BAR  
NOT TO SCALE



ELEVATION - EMT MALS STRUCTURE  
NOT TO SCALE



DETAIL 1  
NOT TO SCALE

NOTES:

1. POWER CABLES SHALL BE CONTINUOUS BETWEEN LIGHT STATIONS.
2. "TEE" SPLICES FOR SPLICING #12 WIRES OF LOWER CABLE CONDUCTORS TO POWER SERVICE CABLES SHALL BE JOINED WITH SOLDERLESS WIRE CONNECTORS AND SEALED WITH SELF SEALING HEAT SHRINKABLE TUBING. SPLICE SHALL BE WATERPROOF.
3. LEAVE 3 FEET SLACK IN EACH CABLE AT EACH LIGHT BAR JUNCTION CAN.
4. FIELD ATTACHED CONNECTOR, L-823 PLUG AND RECEPTACLE.
5. COUPLING THREADS TO BE CLEANED AND COATED WITH SILICONE ANTI-SEIZE COMPOUND.
6. GROUND ROD SHALL BE 3/4" X 10' COPPER CLAD STEEL WITH EXOTHERMIC WELDED CONNECTION.
7. CONCRETE - CONCRETE SHALL DEVELOP MIN. STRENGTH OF 3000 PSI IN 28 DAYS WITH MAX. SLUMP OF 3 INCHES AND MAX. AGGREGATE SIZE OF 3/4" INCH.
8. ALL MATERIALS ARE CONTRACTOR FURNISHED.

|                      |   |
|----------------------|---|
| PROJECT NAME         | ADDISON AIRPORT   |
| DRAWING TITLE        | MALS STATION DETAILS (EMT)                                  |
| DRAWING NO.          | E8  |
| DATE                 | 2/9/01  |
| BY                   |   |
| DATE                 |   |
| REVISIONS            |   |
| TYPED NO.            |   |
| BID NO.              | E707044.00  |
| URBS NO.             |   |
| DESIGN               |   |
| DRAWN                |   |
| CHECKED              |   |
| SCALE                |   |
| PRELIMINARY          | AVIATION ALLIANCE, INC. CONSULTING ENGINEERS                |
| NOT FOR CONSTRUCTION | 4100 Armon Center Boulevard, Suite 106 Fort Worth, TX 76165 |
| DATE                 | 2/29/01   |
| APPROVED             |   |
| UNSCORP.COM          |   |