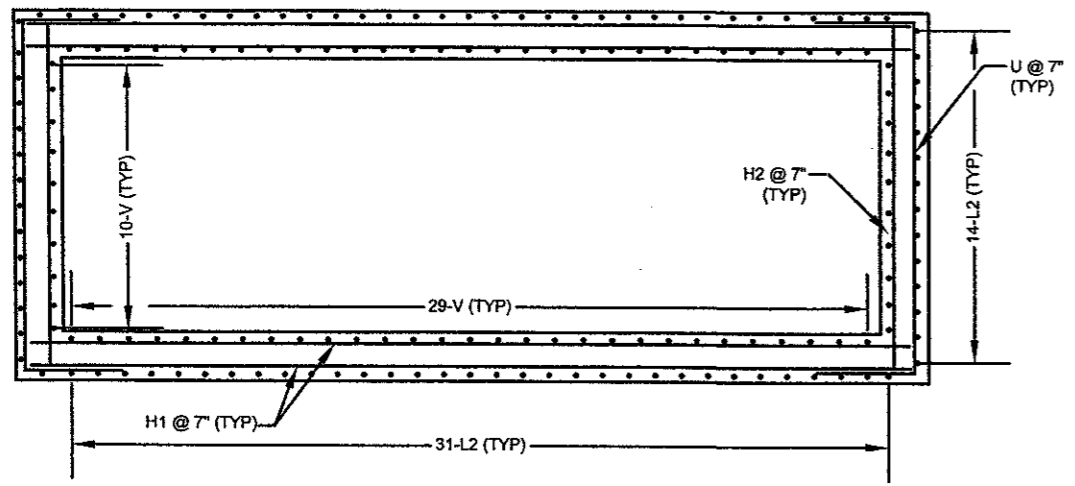
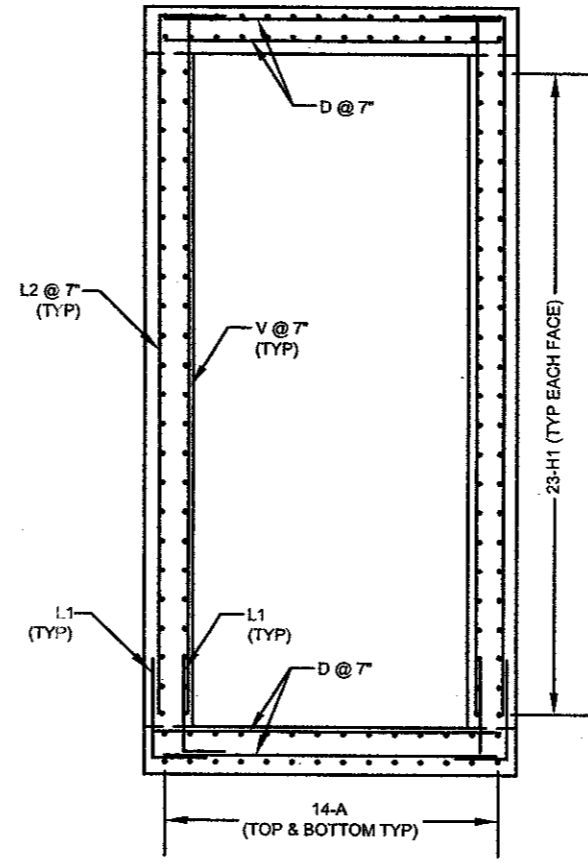


SECTION A-A



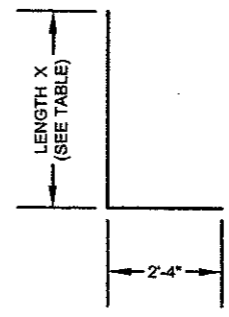
PLAN VIEW



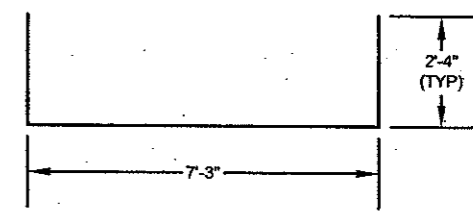
SECTION B-B

ESTIMATED QUANTITIES MANHOLE NO. 4					
BAR	NO.	SIZE	LENGTH X	TOT. LENGTH	WEIGHT
A	56	# 5		18'-8"	1090
D	132	# 5		7'-4"	1010
H1	92	# 5		18'-8"	1791
H2	46	# 5		7'-4"	352
K1	8	# 5		4'-3"	35
L1	168	# 5	2'-4"	4'-8"	818
L2	90	# 5	14'-7"	16'-11"	1588
V	78	# 5		14'-8"	1193
U	46	# 5		11'-11"	572
REINFORCING STEEL - LBS					8449
CL C CONCRETE - C.Y.					29

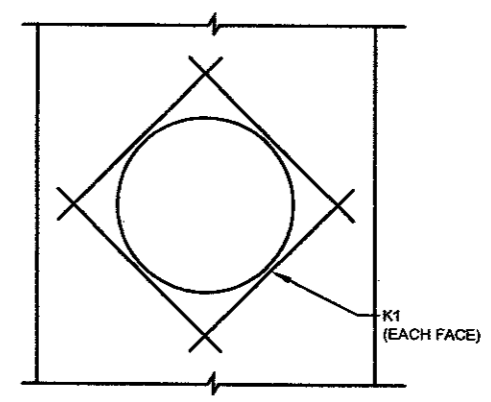
ESTIMATED QUANTITIES MANHOLE NO. 6					
BAR	NO.	SIZE	LENGTH X	TOT. LENGTH	WEIGHT
A	56	# 5		18'-8"	1090
D	132	# 5		7'-4"	1010
H1	92	# 5		18'-8"	1791
H2	46	# 5		7'-4"	352
K1	8	# 5		4'-3"	35
L1	168	# 5	2'-4"	4'-8"	818
L2	90	# 5	14'-9"	17'-1"	1604
V	78	# 5		14'-10"	1207
U	46	# 5		11'-11"	572
REINFORCING STEEL - LBS					8479
CL C CONCRETE - C.Y.					30



BARS "L"



BARS "U"



DETAIL 1 - TYPICAL OPENING

NOTES:

- CONSTRUCTION SHALL BE IN ACCORDANCE WITH THE FAA STANDARD SPECIFICATIONS D-751.
- DESIGN IS IN ACCORDANCE WITH AASHTO STANDARD SPECIFICATIONS 16TH ED. WITH 1999 INTERIMS.
- LIVE LOAD IS BASED ON HS-20 TRUCK.
- DIMENSIONS SHALL NOT BE SCALED FROM DRAWINGS.
- ALL CIP CONCRETE SHALL BE CLASS C WITH A MINIMUM 28 DAY CYLINDER STRENGTH (F_c) = 4000 PSI.
- CHAMFER ALL EXPOSED CORNERS 3/4" UNLESS NOTED OTHERWISE (UNO).
- MANHOLE STEPS SHALL BE PROVIDED ON WALL ADJACENT TO OPENING.
- REINFORCING STEEL SHALL CONFORM TO ASTM 615 GRADE 60 SPECIFICATION.
- CLEARANCE MEASURED FROM THE FACE OF CONCRETE TO THE SURFACE OF ANY REINFORCING BAR SHALL BE 2" (UNO).
- REINFORCING BAR SPACING DIMENSIONS ARE TO THE CENTERLINE OF BAR. BAR BENDING DETAILS SHOW OUT-TO-OUT DIMENSIONS.
- IN AREAS OF CONFLICT BETWEEN REINFORCING STEEL, BLOCKOUTS OR PIPES, THE REINFORCING STEEL SHALL BE BENT, ADJUSTED, OR CUT TO CLEAR AS DIRECTED BY THE ENGINEER.
- SEE "STRUCTURAL DETAILS FOR MANHOLES NO.S 1,2,3,& 5" SHEET FOR RING AND COVER DETAIL.

PROJECT NAME	ADDISON AIRPORT
DRAWING TITLE	STRUCTURAL DETAILS FOR MANHOLE NO.S 4 & 6
DATE	12/8/00
BY	
CHECKED	
DRAWN	
DESIGN	
PROJECT NO.	E01075.00
ISSUE NO.	
SCALE	

URS Greiner Woodward Clyde
4100 Amon Center Boulevard, Suite 108
Fort Worth, TX 76185
www.urscorp.com