

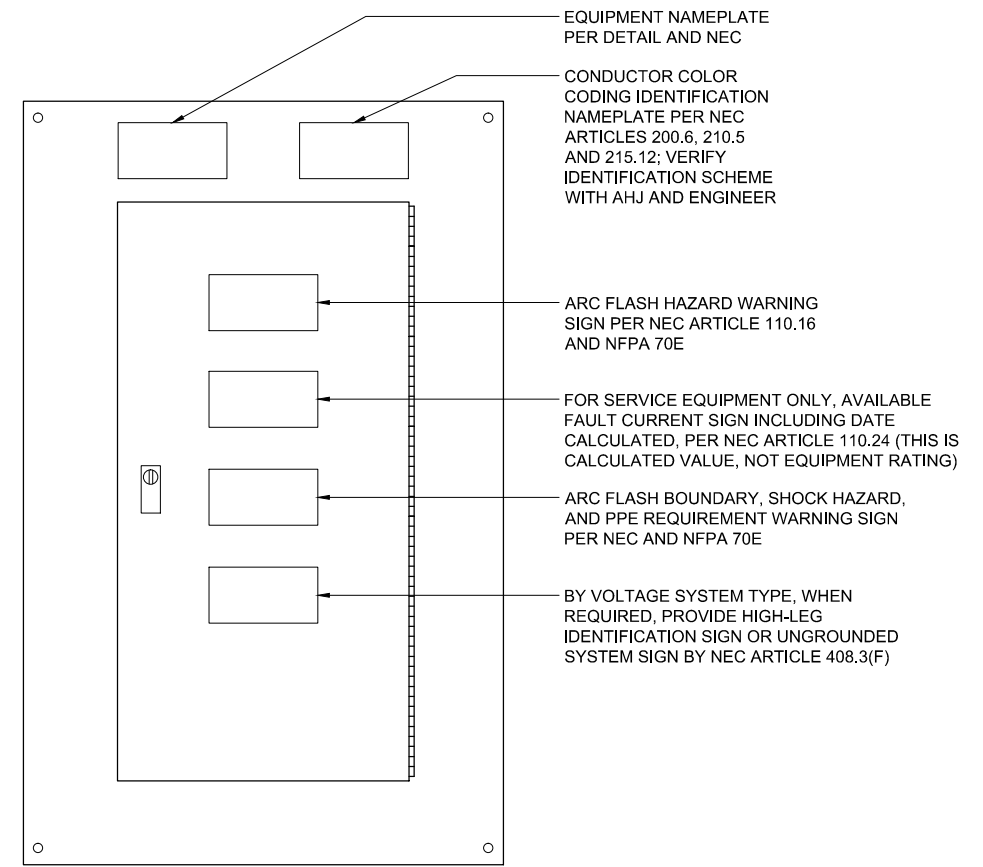
HANDHOLE INSTALLATION NOTES:

- PRECAST AIRCRAFT RATED CONCRETE HANDHOLE AND GALVANIZED STEEL COVER SHALL BE DESIGNED FOR THE FOLLOWING LOADINGS (PER AC 150/5320-6):
 - HANDHOLE COVERS FOR 100,000 LB. WHEEL LOADS WITH 250 PSI TIRE PRESSURE.
 - FOR SPANS OF 2 FEET OR LESS IN THE LEAST DIRECTION, A UNIFORM LIVE LOAD OF 250 PSI.
 - FOR SPANS OF 2 FEET OR GREATER IN THE LEAST DIRECTION, THE DESIGN WILL BE BASED ON THE NUMBER OF WHEELS WHICH WILL FIT THE SPAN. WHEEL LOADS OF 50,000 TO 75,000 LB. SHOULD BE CONSIDERED.
- ALL CABLE THROUGH HANDHOLE SHALL HAVE SUFFICIENT SLACK SO CABLE AND CONNECTOR CAN BE BROUGHT TO SURFACE FOR SPLICING, PROVIDE MINIMUM 5' SLACK FOR EACH CABLE ENTERING HANDHOLE.
- EACH CABLE SHALL BE IDENTIFIED WITH WIRE MARKER GIVING CIRCUIT NUMBER.
- RACK AND SECURE ALL CABLES. MAINTAIN MINIMUM 6" SEPARATION DISTANCE BETWEEN 5kV AND 600V CIRCUITS.
- TAG LIGHTING CIRCUIT CABLES IN ALL CONCRETE STRUCTURES (TWO REQUIRED PER CABLE).
- AT ROD OPENING, DRIVE GROUND ROD INTO EARTH LEAVING 6" EXTENDING ABOVE FLOOR. SEAL HOLE WATERTIGHT WITH PORTLAND CEMENT GROUT AROUND ROD.
- SUBMIT LAYOUT OF EACH HANDHOLE FOR APPROVAL BY ENGINEER, INDICATING ELECTRICAL DUCT, CONDUIT AND SPARE STUBOUTS.
- PROVIDE HANDHOLES WITH SPARE DUCT SLOTS IN EACH EMPTY FACE, WATERTIGHT.
- EXCAVATION AND BACKFILL NECESSARY FOR THE CONSTRUCTION OF THE HANDHOLE SHALL BE PERFORMED IN ACCORDANCE WITH THE SPECIFICATION REQUIREMENTS.
- PROVIDE WATERTIGHT CONDUIT BUSHING AND WATERTIGHT SEALS FOR ALL DIRECT BURIED CABLES ENTERING THE HANDHOLE VIA A CONDUIT STUBOUT.
- COVER SHALL BE 1" MAXIMUM ABOVE FINISHED GRADE. AREA SURROUNDING HANDHOLE SHALL BE GRADED TO DRAIN AWAY FROM HANDHOLE.
- BOND AND GROUND COVER AND FRAME TO ROD USING BRAIDED COPPER GROUND STRAP EQUIVALENT AMPACITY TO #2 AWG STRANDED COPPER WIRE.
- GRADE THE AREA AROUND THE HANDHOLE 10' IN ALL DIRECTIONS SUCH TO PREVENT WATER AND DIRT ACCUMULATION ACROSS THE TOP OF THE COVER AND ALLOW WATER TO DRAIN AWAY FROM THE HANDHOLE.
- INSTALL PULLING IRONS IN EACH FACE.

**AIRCRAFT-RATED
PREFABRICATED CONCRETE HANDHOLE**

1
E-306

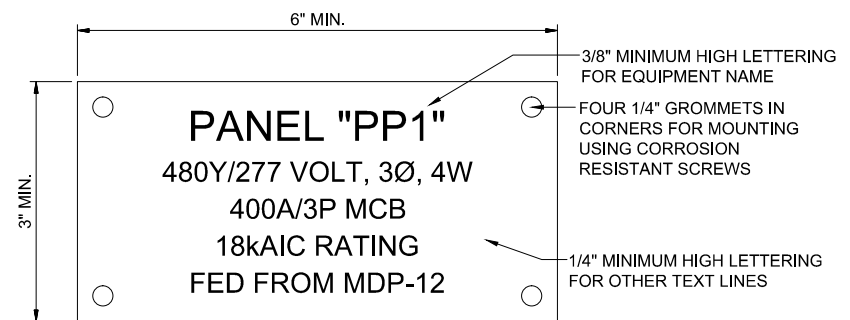
SCALE: NONE



PANEL FRONT VIEW

GENERAL NOTE:

- INSTALL ALL NAMEPLATES AND WARNING SIGNS IN ACCORDANCE WITH NEC AND NFPA 70E REQUIREMENTS.
- INSTALL NAMEPLATES AND WARNING SIGNS ON ALL ELECTRICAL EQUIPMENT, INCLUDING BUT NOT LIMITED TO, SWITCHBOARDS, PANELBOARDS, TRANSFORMERS, SWITCHES, CONTROL PANELS AND MOTOR CONTROL CENTERS.
- EXTERIOR EQUIPMENT SHALL HAVE WEATHER-RESISTANT, NON-FADING NAMEPLATES AND SIGNAGE.
- REFER TO SPECIFICATIONS FOR ADDITIONAL NAMEPLATE AND SIGNAGE REQUIREMENTS.



EQUIPMENT NAMEPLATE NOTES:

- INSTALL 2-PLEX ACRYLIC, WHITE ON BLACK CORE, MULTIPLE LINES TEXT, CUSTOM ENGRAVED NAME PLATES.
- MOUNT WITH STAINLESS STEEL SCREWS.
- SEAL SCREW HOLES WITH SILICONE RUBBER.
- NAMEPLATE INFORMATION SHALL INCLUDE:
 - IDENTIFICATION NAME
 - VOLTAGE SYSTEM
 - AMPACITY RATING AND TYPE
 - EQUIPMENT AIC RATING
 - FEEDER DESCRIPTION

2
E-306

TYPICAL ENGRAVED NAMEPLATE AND SIGNAGE DETAIL

SCALE: NONE



REGISTRATION NO.
F-5713

RECORD DRAWINGS
03/10/2015

REV.	DATE	DESCRIPTION	BY



ADDISON AIRPORT
ADDISON, TEXAS

RUNWAY 33 RSA IMPROVEMENTS

ELECTRICAL
DETAILS VI

JOB NO.: 13081100
DATE: NOV. , 2013
DESIGNED BY: MCL
DRAWN BY: JKS

BAR IS ONE INCH ON ORIGINAL DRAWING
IF NOT ONE INCH ON THIS SHEET, ADJUST SCALES ACCORDINGLY.

DRAWING NUMBER
E-306

SHEET NUMBER
53