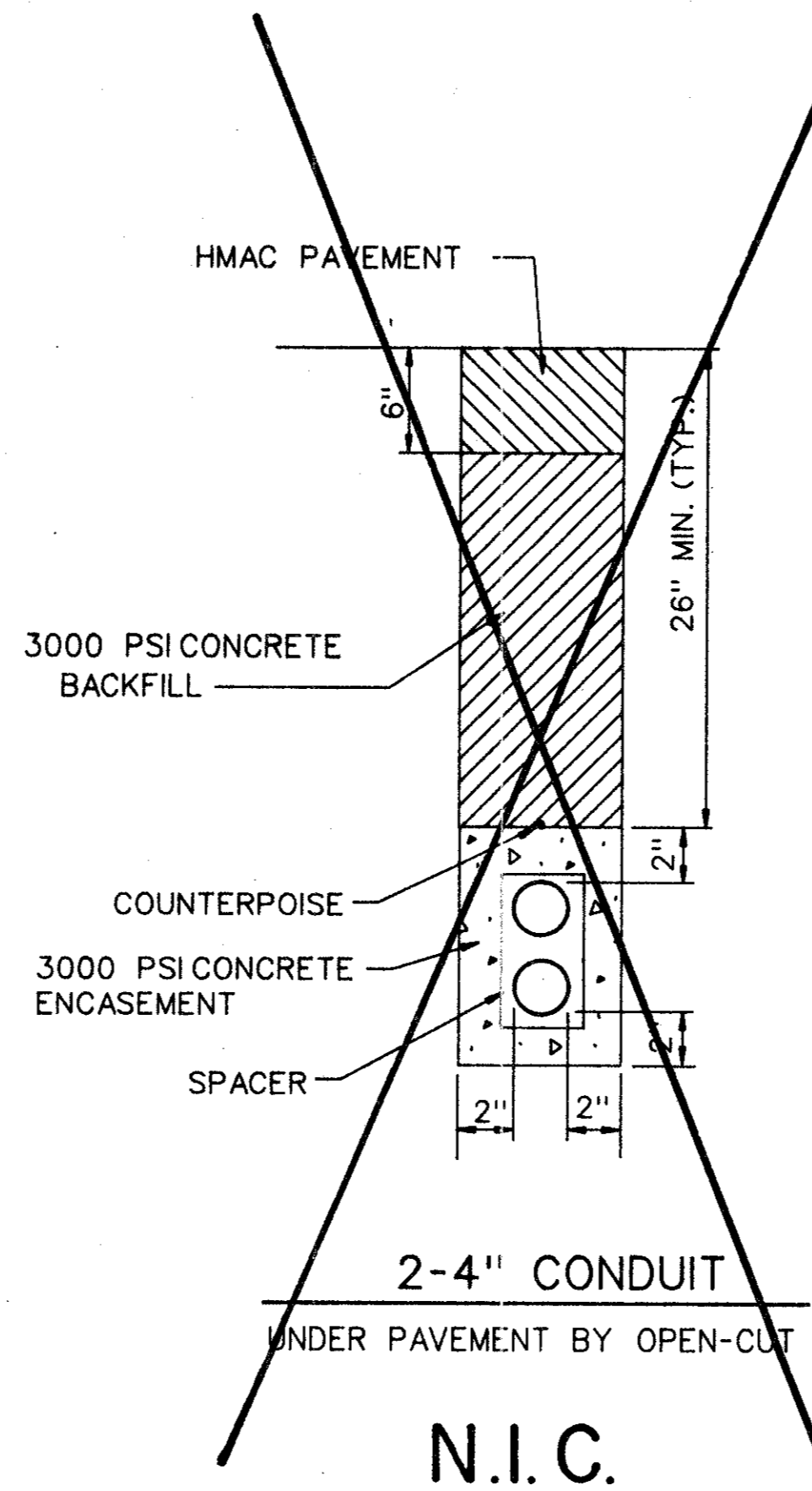


NOTE:
CONTRACTOR SHALL USE HEAT SHRINKABLE TUBING IN LIEU OF TAPE.
DIRECT FLAME HEATING OF HEAT SHRINKABLE TUBING WILL NOT BE PERMITTED.

CONNECTOR DETAIL

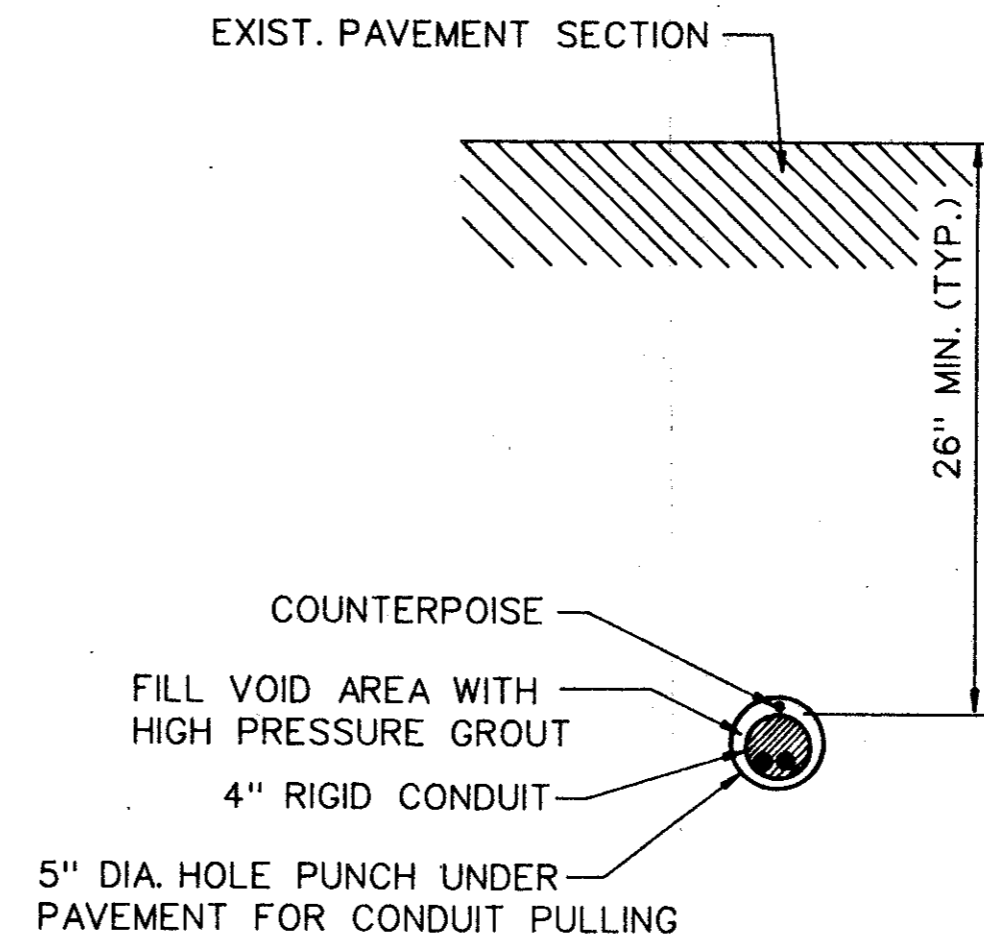
NOT TO SCALE



2-4" CONDUIT

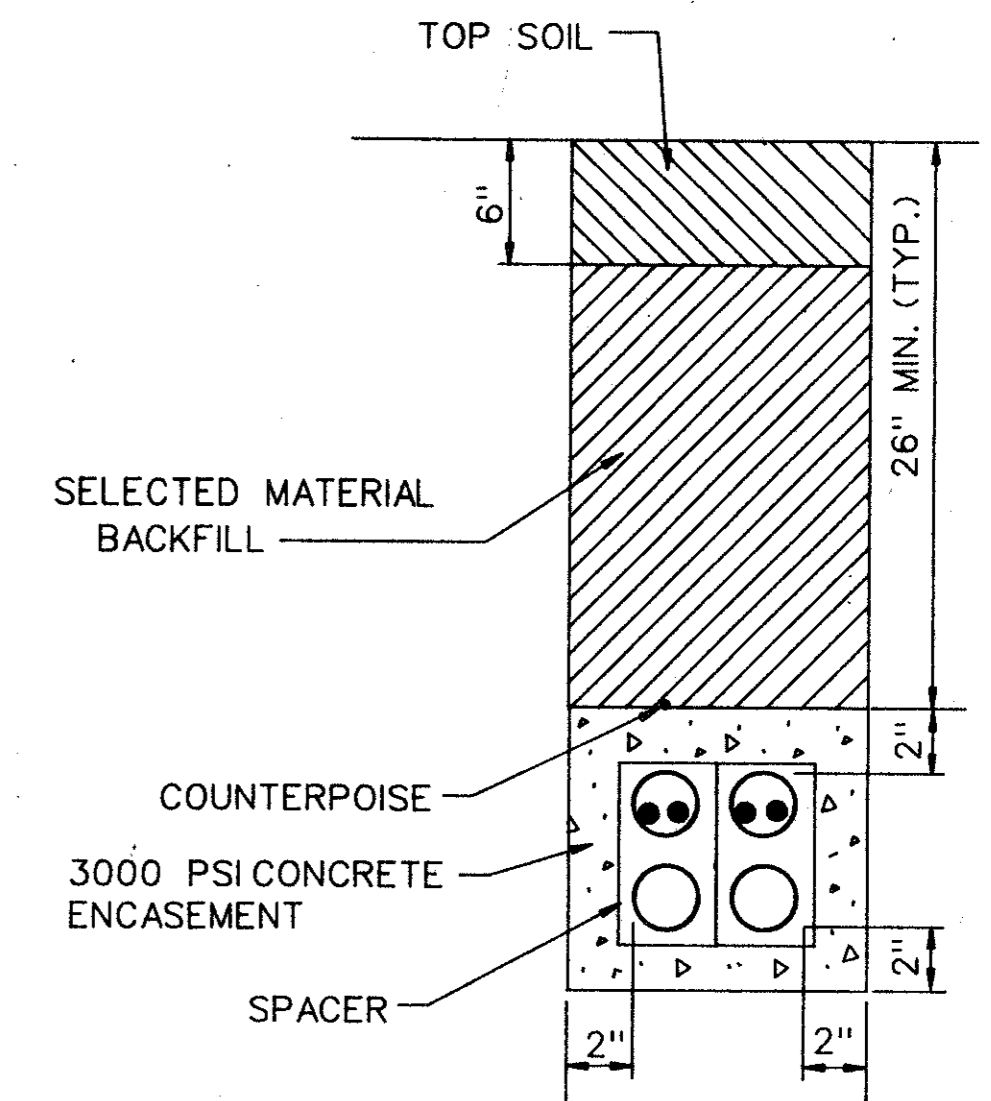
UNDER PAVEMENT BY OPEN-CUT

N.I.C.



1-4" CONDUIT

UNDER PAVEMENT

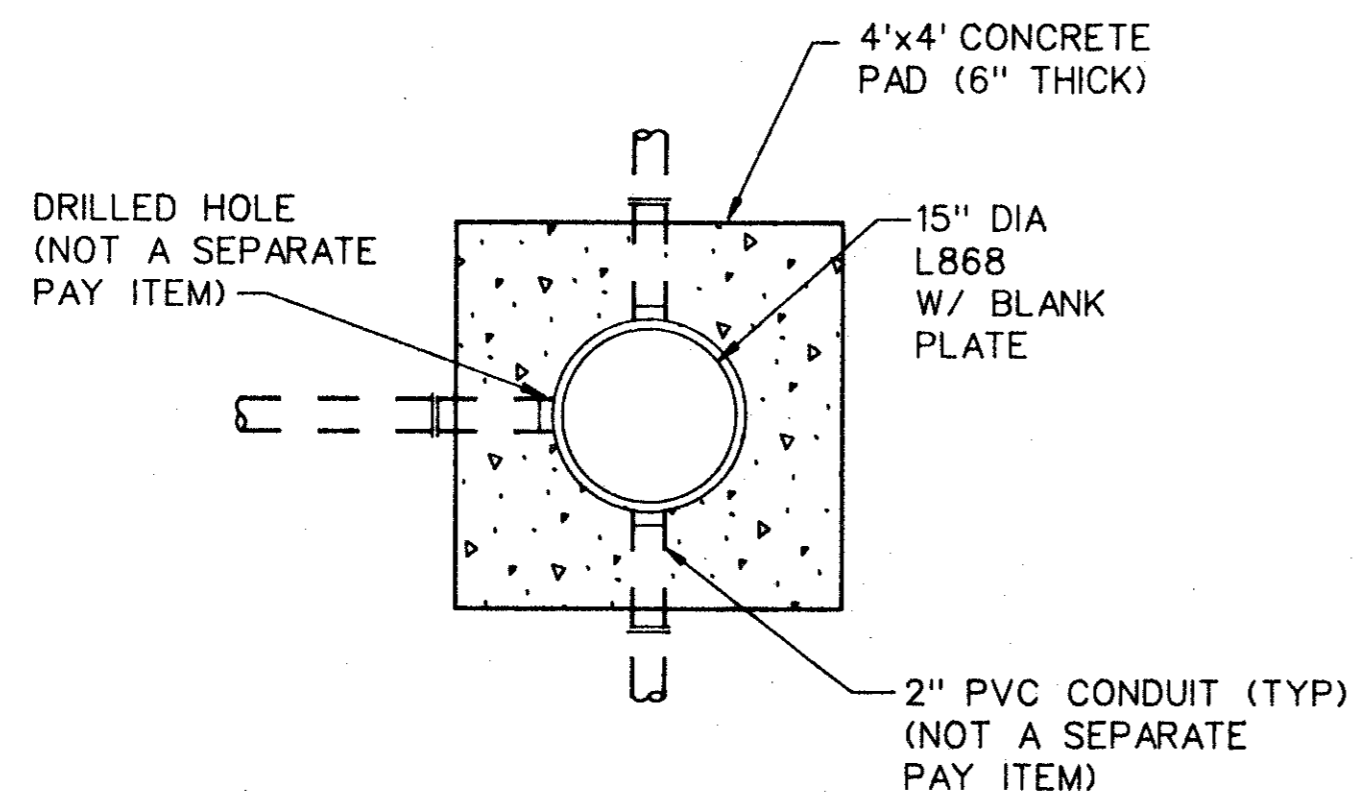
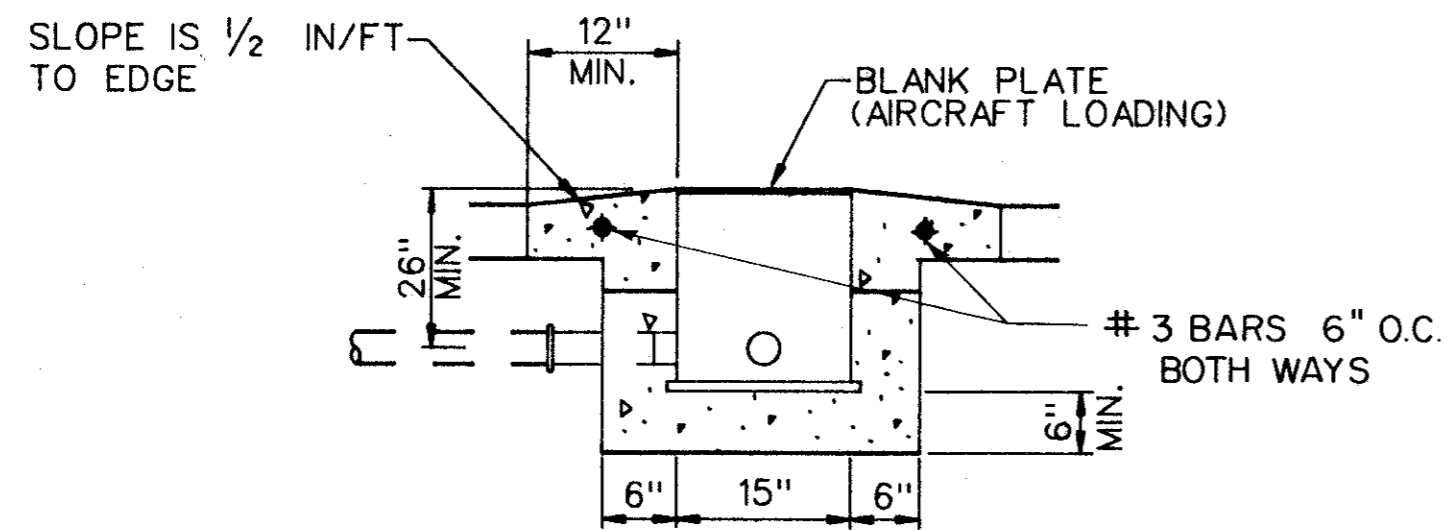


4-4" CONDUIT

WITH CONCRETE ENCASEMENT

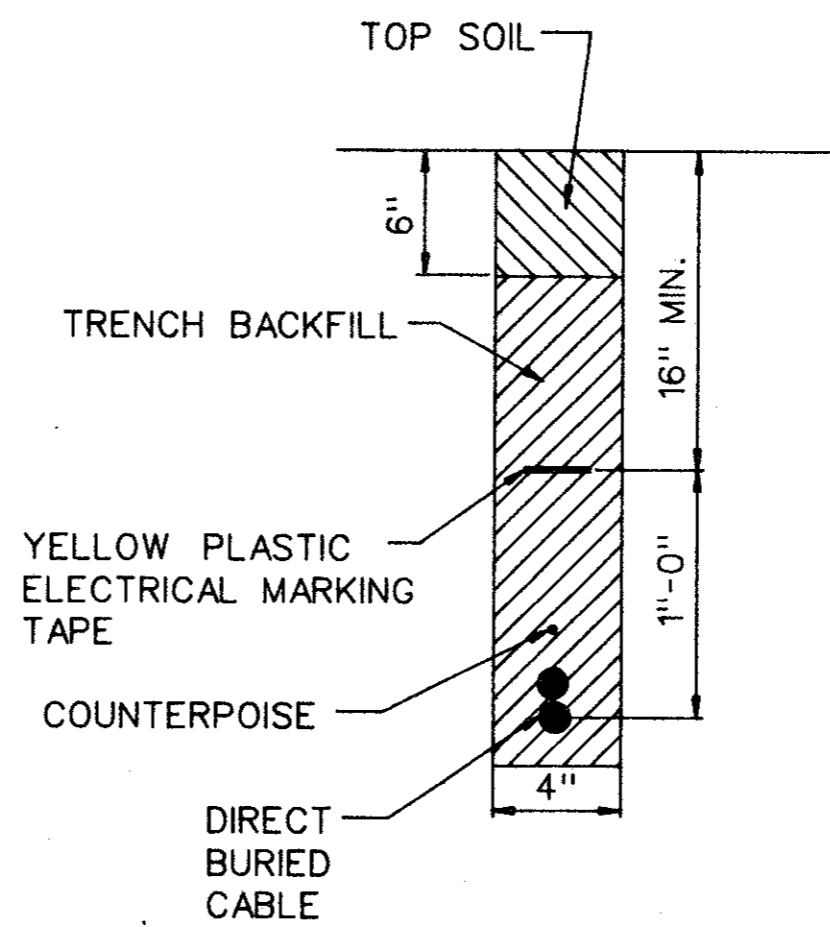
CONDUIT INSTALLATION DETAIL

NOT TO SCALE



PULLBOX DETAIL

NOT TO SCALE



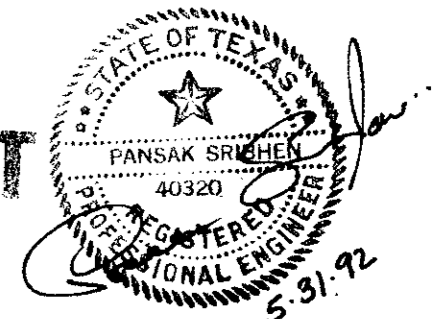
DIRECT BURIED CABLE INSTALLATION

NOT TO SCALE

★ ALL DETAILS SHOWN ON THIS SHEET ARE INCIDENTAL TO BID ITEM, UNLESS NOTED OTHERWISE.

AS BUILT

NOV 10 1993



LD - 1

DESIGN: PSA ENGINEERING	ALP. NO.: 3-48-0063-04-92
DRAWN: PSA ENGINEERING	BID NO.: 92 - 29
CHECKED: P. SRIBHEN	JOB NO.: PSA 9205
SCALE:	

Date	Revisions	By

Greiner Fort Worth, Texas
Engineers, Architects
and Planners

In Association With:
ASA ENGINEERING
DALLAS, TEXAS



ADDISON AIRPORT

AIRFIELD LIGHTING IMPROVEMENTS
CABLE AND CONDUIT DETAILS

SHEET 28

DATE: JUNE, 1992