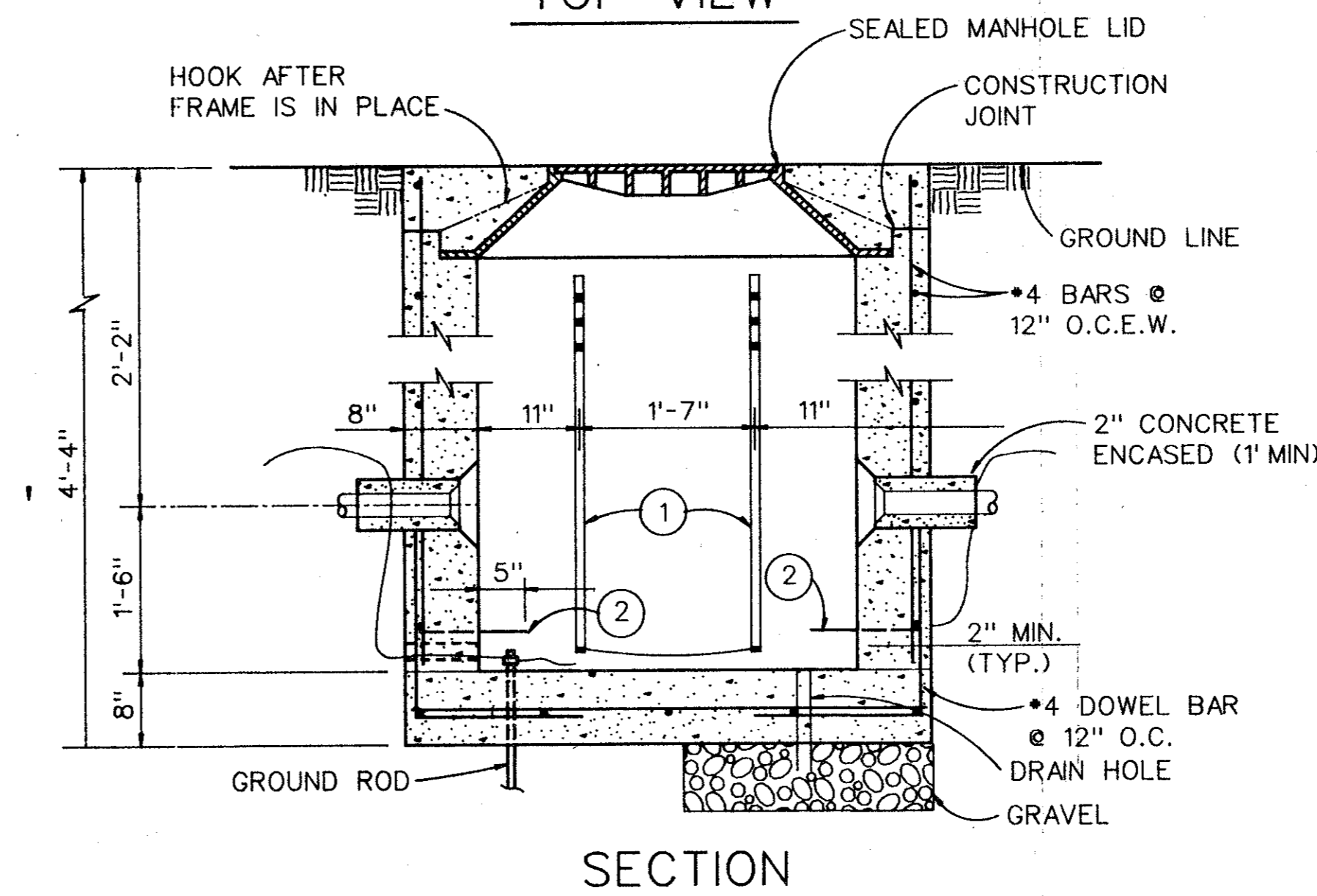
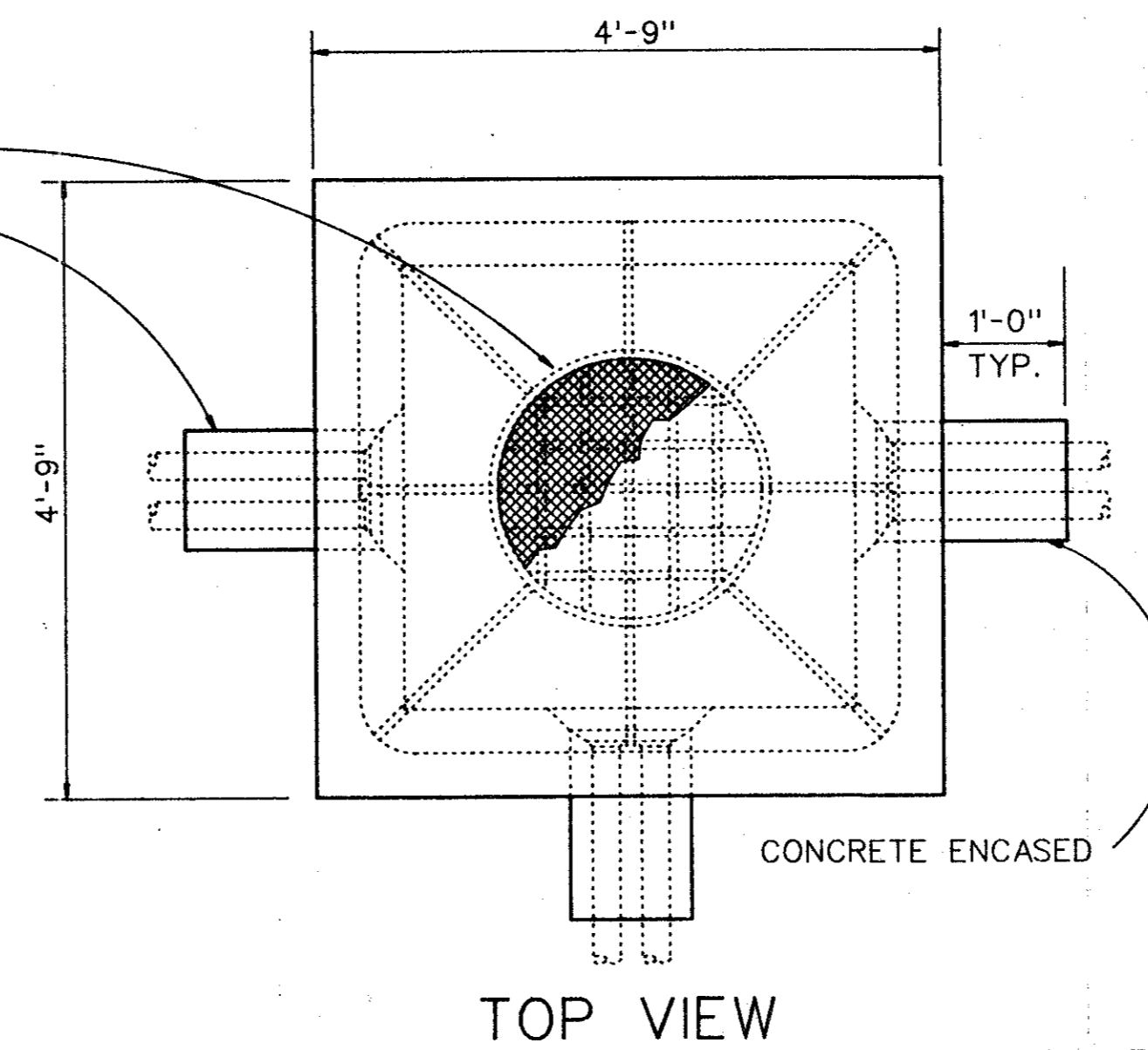


MANHOLE FRAME AND COVER
- SEE MANHOLE NOTES

CONTRACTOR TO FURNISH
SHOP DRAWINGS SHOWING
DETAILS OF CONDUIT ENTRANCE
AT EACH LOCATION. (TYPICAL)
CONDUIT ENTRANCES SHOWN ON
PLAN DRAWINGS



MANHOLE LEGEND

- ① CABLE RACKS - JOSLYN • J-5126 OR EQUAL
CABLE HOOKS - JOSLYN • J-5131 OR EQUAL
LOCATION MAY VARY TO FIT LOCAL
CONDITION.
- ② PULLING-IN-IRONS: INSTALL OPPOSITE CONDUIT ENTRANCE.
POSITION BELOW LEVEL OF CONDUIT ENTRANCE.
- ③ TERMINATE ALL DUCTS IN LIGHT AND HEAVY DUTY
MANHOLE WITH END BELLS.

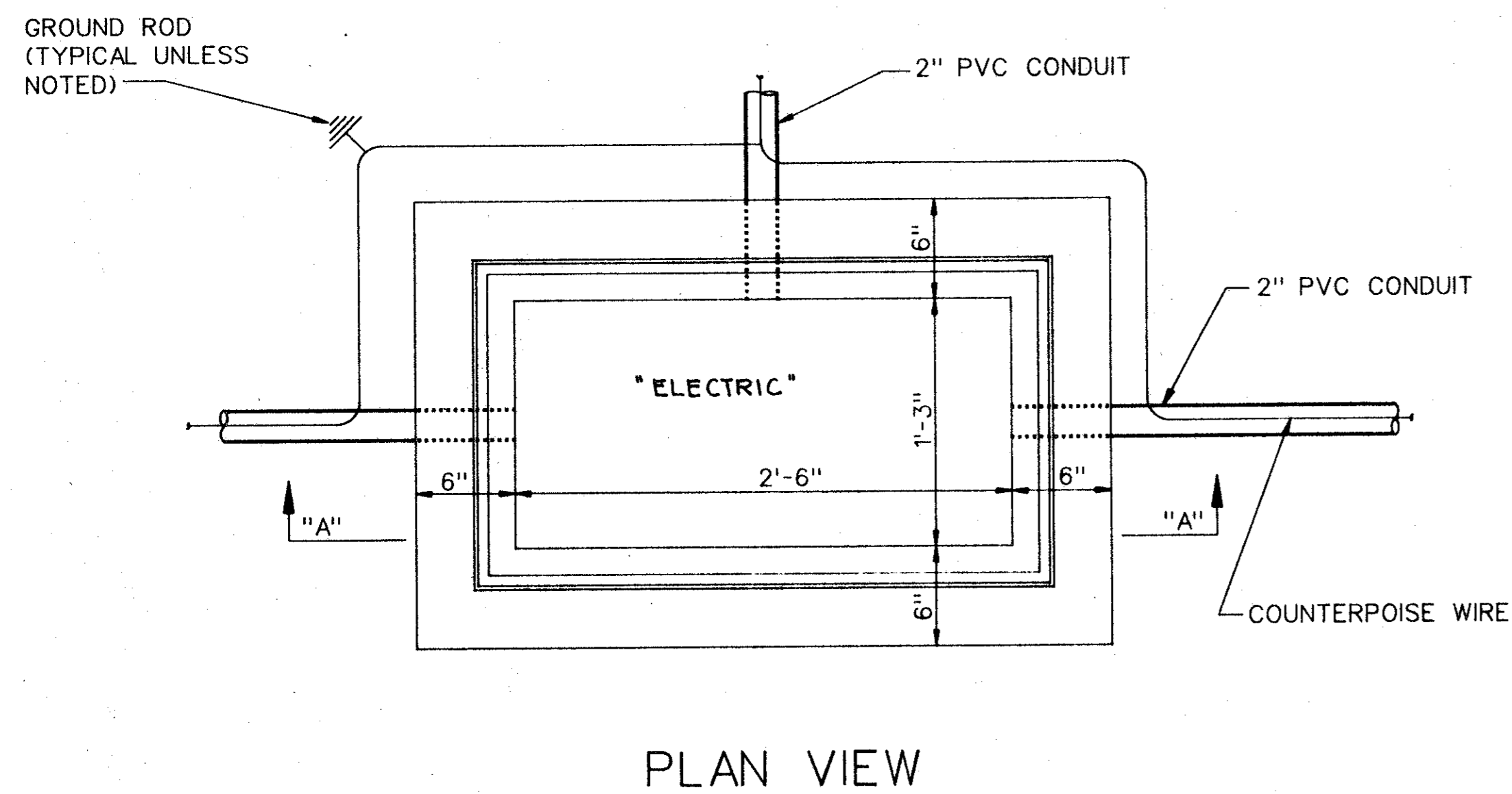
MANHOLE NOTES

MANHOLE FRAME AND COVER SHALL BE
HEAVY DUTY TYPE, AIRCRAFT LOADING, CAPACITY
110 PSI MIN., WEATHER SEALED, WITH "ELECTRIC" CAST INTO TOP.

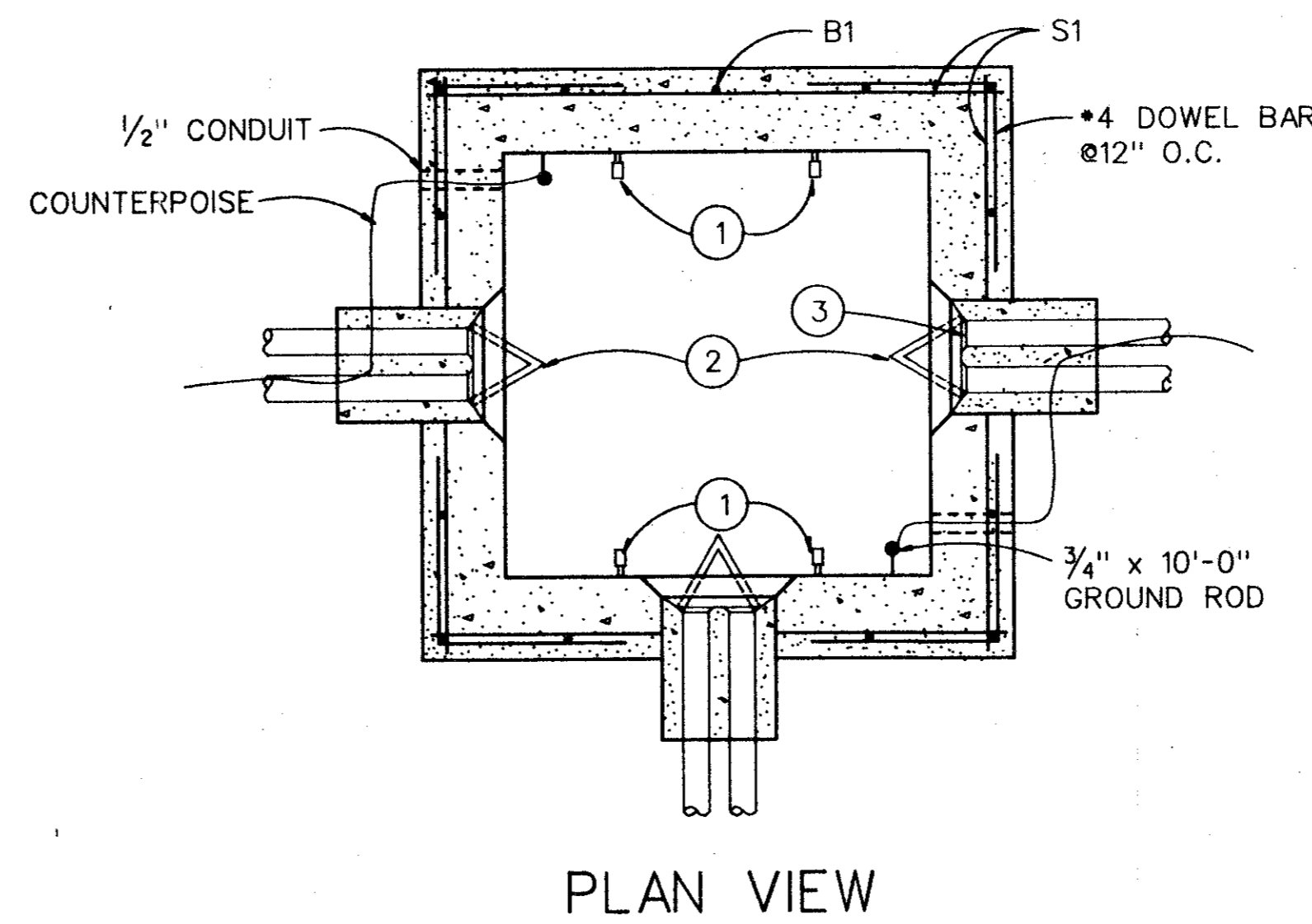
DIAMETER OF MANHOLE CLEAR OPENING IS 30".

CASTING TO BE MADE GRAY CAST IRON CLASS 30 IN
ACCORDANCE WITH FED. SPEC. QQ-1-652.

| MANHOLE REINFORCING SCHEDULE | | | | |
|---|------|--------|------|--------|
| | MARK | AMOUNT | SIZE | LENGTH |
| HEAVY DUTY BOX FOR PAVED AREA OR UNPAVED AREA | S1 | 24 | •4 | 4'-6" |
| | B1 | 16 | •4 | 4'-11" |



CONCRETE HANDHOLE DETAILS
NO SCALE



MANHOLE DETAIL
NOT TO SCALE

★ ALL DETAIL SHOWN ON THIS SHEET ARE
INCIDENTAL TO BID ITEM, UNLESS NOTED
OTHERWISE.

AS BUILT

NOV 10 1993



LD - 4

C:\DGN\ADS\ADSBORDR.DGN

DESIGN: PSA ENGINEERING
DRAWN: PSA ENGINEERING
CHECKED: P. SRIBHEN
SCALE:

A.L.P. NO. 3-48-0063-04-92
BID NO.: 92-29
JOB NO.: PSA 9205

| Date | Revisions | By |
|------|-----------|----|
| | | |

Greiner Fort Worth, Texas
Engineers, Architects
and Planners

In Association With
ASA ENGINEERING
DALLAS, TEXAS



ADDISON AIRPORT

AIRFIELD LIGHTING IMPROVEMENTS
MANHOLE & HANDHOLE DETAILS

SHEET
31
DATE: JUNE, 1992