

LOCATION OF TEE HANGAR
ELECTRICAL WORK

ADDISON AIRPORT TEE HANGAR SITE LOCATION
SCALE: 1" = 400'-0"

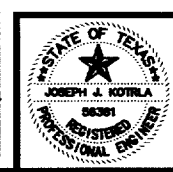


Magnetic Declination
4° 52' E (August 2004)
Annual Rate of Change
5' W (August 2004)



VERIFY SCALE
Bar is one inch on original drawing.
If not one inch on this sheet, adjust scale accordingly.

THESE DOCUMENTS ARE FOR BIDDING, CONSTRUCTION, AND PERMIT PURPOSES.
Joseph Kotrla
DATE: 1-12-05



TOWN OF ADDISON, TEXAS

ADDISON AIRPORT TEE HANGAR LIGHTING AIRPORT SITE LOCATION

McCREARY & ASSOCIATES, INC.
REGISTERED ENGINEERS
6000 LBJ FREEDOM SQUARE SUITE 217 DALLAS, TEXAS 75240
DESIGNED BY: W.H.G. PROJECT: 97 180
DRAWN BY: M.E.G. DATE: JANUARY, 2005 SHEET NO. E1 OF E7 SHEETS

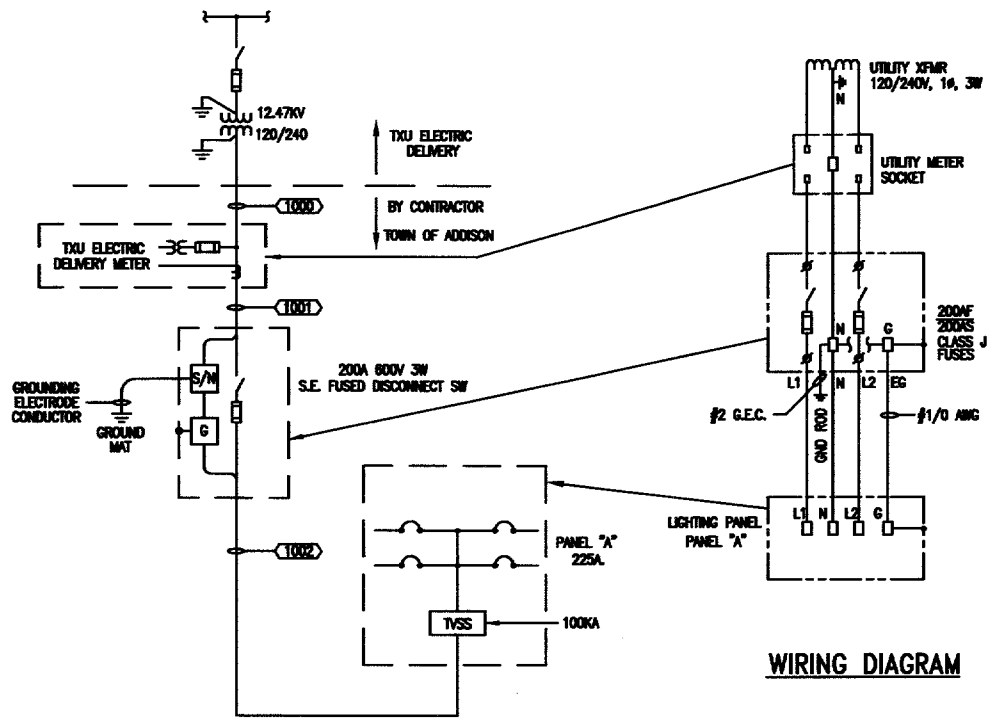
FF-16

PANEL SCHEDULE									
NUMBER	A (B NOTE 1)		VOLTS		120/240V 1Ø 3WIRE				
LOCATION	MAIN ELECTRICAL ROOM		SIZE		225A				
FED FROM	MCC-1		MAIN LUGS ONLY						
NEMA 1 (SURFACE MOUNT)									
CIRCUIT DESCRIPTION	LOAD KVA	CKT #	CKT #	CKT #	CKT #	LOAD KVA	CIRCUIT DESCRIPTION	LOAD KVA	CKT #
TEE HANGAR UNIT #1 LIGHTING AND RECEPTACLE	0.89	20	1	2	20	0.89	TEE HANGAR UNIT #2 LIGHTING AND RECEPTACLE	0.89	20
TEE HANGAR UNIT #3 LIGHTING AND RECEPTACLE	0.89	20	3	4	20	0.89	TEE HANGAR UNIT #4 LIGHTING AND RECEPTACLE	0.89	20
TEE HANGAR UNIT #5 LIGHTING AND RECEPTACLE	0.89	20	5	6	20	0.89	TEE HANGAR UNIT #6 LIGHTING AND RECEPTACLE	0.89	20
TEE HANGAR UNIT #7 LIGHTING AND RECEPTACLE	0.89	20	7	8	20	0.89	TEE HANGAR UNIT #8 LIGHTING AND RECEPTACLE	0.89	20
TEE HANGAR UNIT #9 LIGHTING AND RECEPTACLE	0.89	20	9	10	20	0.89	TEE HANGAR UNIT #10 LIGHTING AND RECEPTACLE	0.89	20
TEE HANGAR UNIT #11 LIGHTING AND RECEPTACLE	0.89	20	11	12	20	0.89	TEE HANGAR UNIT #12 LIGHTING AND RECEPTACLE	0.89	20
TEE HANGAR UNIT #13 LIGHTING AND RECEPTACLE	0.89	20	13	14	20	0.89	TEE HANGAR UNIT #14 LIGHTING AND RECEPTACLE	0.89	20
TEE HANGAR UNIT #15 LIGHTING AND RECEPTACLE	0.89	20	15	16	20	0.89	TEE HANGAR UNIT #16 LIGHTING AND RECEPTACLE	0.89	20
TEE HANGAR UNIT #17 LIGHTING AND RECEPTACLE	0.89	20	17	18	20	0.89	TEE HANGAR UNIT #18 LIGHTING AND RECEPTACLE	0.89	20
TEE HANGAR UNIT #19 LIGHTING AND RECEPTACLE	0.89	20	19	20	20	0.89	TEE HANGAR UNIT #20 LIGHTING AND RECEPTACLE	0.89	20
LIGHTING - EXTERIOR ROOF MOUNTED UNITS 10, 14, 18	1.24	20	21	22	20	.82	LIGHTING - EXTERIOR ROOF MOUNTED UNITS 2 AND 6		
SPARE		20	23	24			SPARE		
SPARE		20	25	26	20		SPARE		
SPARE		20	27	28			SPARE		
SPARE		20	29	30	20		SPARE		
TVSS									

NOTES:
 1. PANEL SCHEDULE FOR PANEL 'B' SAME AS PANEL 'A' EXCEPT LOAD FOR CIRCUITS B21/23 IS 0.83 KVA AND FOR CIRCUITS B22/23 IS 0.82 KVA.

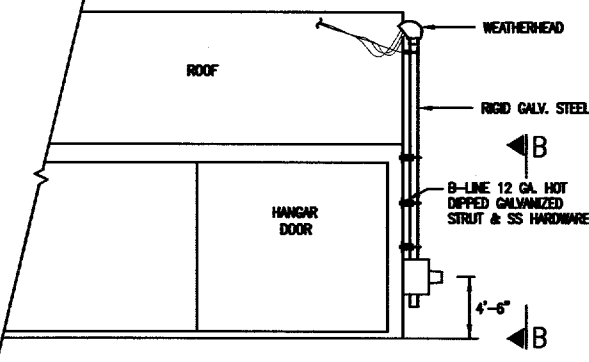
CONDUIT AND CABLE SCHEDULE FOR 120/240 VOLT POWER WIRING					
TAG	WIRING	CONDUIT	SOURCE	DESTINATION	COMMENTS
1000	2 #4/0, #2 N	3" C	SERVICE POLE	SERVICE ENTRANCE METER	VERIFY REQUIREMENTS BY TXU ELECTRIC DELIVERY
1001	2 #4/0, #2 N, #2 GEC	2" C	SERVICE ENTRANCE METER SOCKET	SERVICE ENTRANCE SAFETY DISCONNECT SWITCH	#2 GEC TO GROUND
1002	2 #4/0, #2 N #1/0 EGC	2" C	SERVICE ENTRANCE SAFETY DISC. SWITCH	PANEL 'A'	

LIGHT FIXTURE SCHEDULE							
MARK	DESCRIPTION	VOLTS	TYPE	LAMPS	MANUFACTURER	CATALOG NUMBER	COMMENTS
A	1" HANGAR INTERIOR LFC.	120	FLUORESCENT	800mm	LITHONIA	DMS29T12H240	FURNISH AND INSTALL 96" T-12 RS 800mm HD FLUORESCENT LAMPS
B	EXTERIOR ROOFWAY LIGHTING	240	MEDAL HALIDE	250 WATT	HOLOPHANE	G250MH00LNF	FURNISH AND INSTALL MH LAMPS. PROVIDE PHOTOCELLS

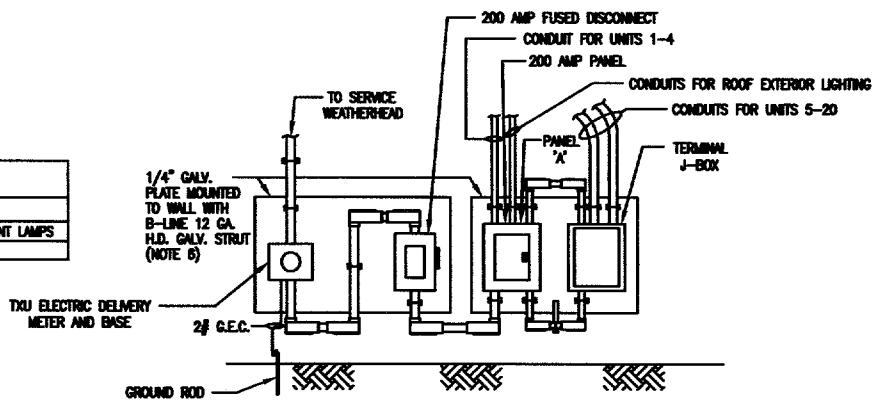


ONE LINE DIAGRAM LEGEND	
	POWER TRANSFORMER
	CIRCUIT BREAKER
	FUSED DISCONNECT SWITCH
	GROUND WIRE
	FUSED CONTROL POWER TRANSFORMER
	G = GROUND
	S/N = SOLID NEUTRAL

ONE LINE DIAGRAM
TYPICAL 2 SERVICES



01 DETAIL SERVICE ENTRANCE
N.T.S.



SECTION B-B
N.T.S. (NOTE 5)

- NOTES:
- METER BASE WILL BE FURNISHED BY CONTRACTOR AND SHALL BE INSTALLED PER TXU ELECTRIC DELIVERY BY THE CONTRACTOR 4" TO 6" ABOVE GRADE INSTALL PER SPECIFICATIONS.
 - CONTRACTOR SHALL BE RESPONSIBLE FOR CONDUIT TO WEATHERHEAD FOR CONNECTION TO TXU ELECTRIC DELIVERY.
 - REF ELECTRICAL PLAN VIEW FOR EXACT LOCATION OF DISCONNECT. REF SITE PLAN FOR LOCATION OF SERVICE.
 - INSTALL NO. 2 AWG CU GROUND TO 3/4" X 10' CU CLAD DRIVEN GROUND ROD. REF DETAIL 04/E1.
 - INSTALL MIRROR IMAGE FOR 2ND HANGAR BUILDING.
 - SUPPORT STRUT SHALL BE ANCHORED TO BUILDING SUPPORT STEEL.

VERIFY SCALE
 Bar is one inch on original drawing.
 If not one inch on this sheet, adjust scale accordingly.

THESE DOCUMENTS ARE FOR BIDDING, CONSTRUCTION, AND PERMIT PURPOSES.
 DATE: 1-12-05

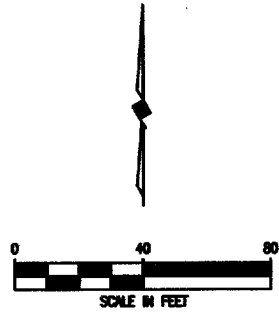


TOWN OF ADDISON, TEXAS

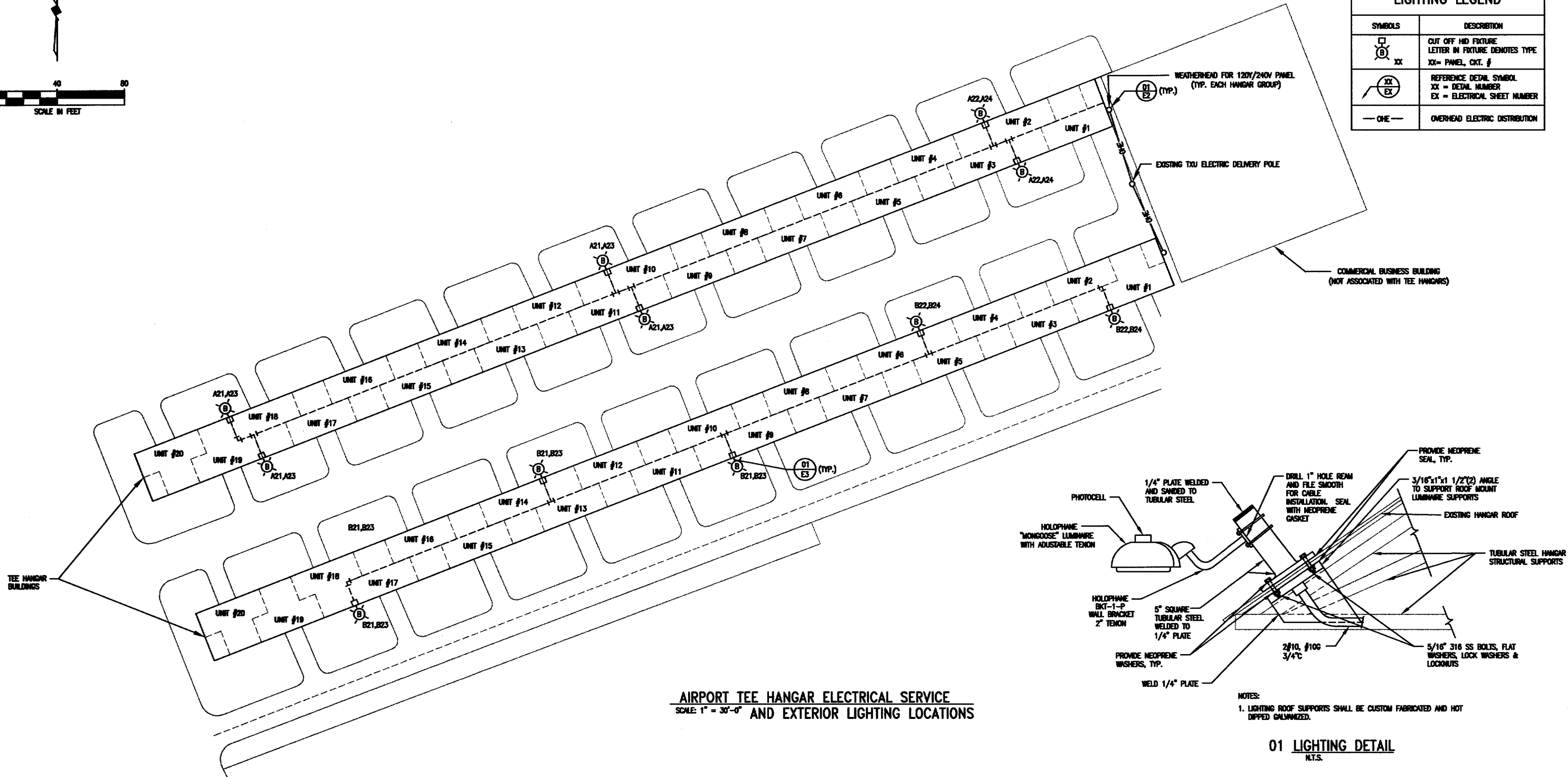
ADDISON AIRPORT TEE HANGAR LIGHTING ELECTRICAL ONE LINE

McCREARY & ASSOCIATES, INC.
 8725 W. 10TH STREET, SUITE 200, DALLAS, TEXAS 75243

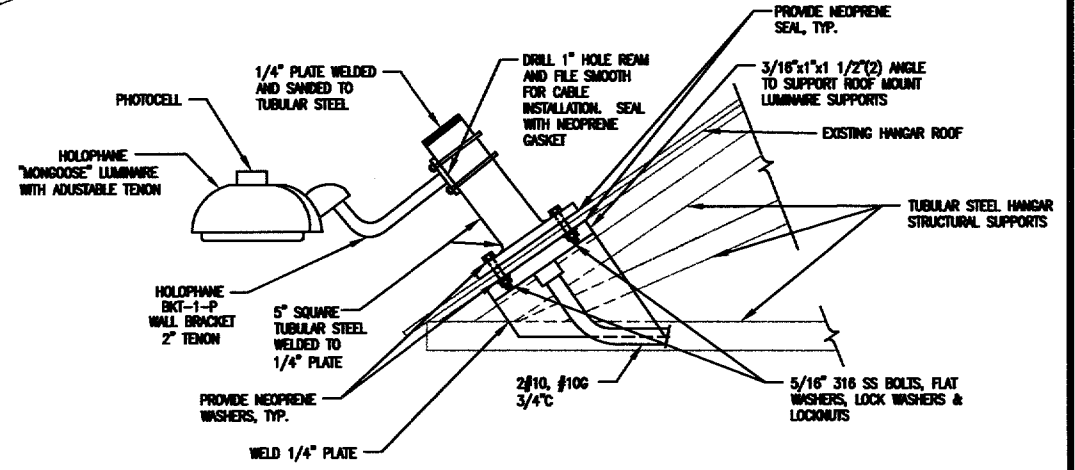
DESIGNED BY: W.H.G. PROJECT: 97 180 SHEET NO. E2
 DRAWN BY: M.E.G. DATE: JANUARY, 2005 OF E7 SHEETS



LIGHTING LEGEND	
SYMBOLS	DESCRIPTION
	CUT OFF HID FIXTURE LETTER IN FIXTURE DENOTES TYPE XX = PANEL, CKT. #
	REFERENCE DETAIL SYMBOL XX = DETAIL NUMBER EX = ELECTRICAL SHEET NUMBER
	OVERHEAD ELECTRIC DISTRIBUTION



AIRPORT TEE HANGAR ELECTRICAL SERVICE
SCALE: 1" = 30'-0" AND EXTERIOR LIGHTING LOCATIONS

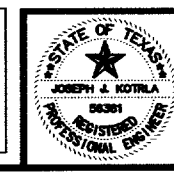


NOTES:
1. LIGHTING ROOF SUPPORTS SHALL BE CUSTOM FABRICATED AND HOT DIPPED GALVANIZED.

01 LIGHTING DETAIL
N.T.S.

VERIFY SCALE
Bar is one inch on original drawing.
If not one inch on this sheet, adjust scale accordingly.

THESE DOCUMENTS ARE FOR BIDDING, CONSTRUCTION, AND PERMIT PURPOSES.
John Wood
DATE: 1-18-05



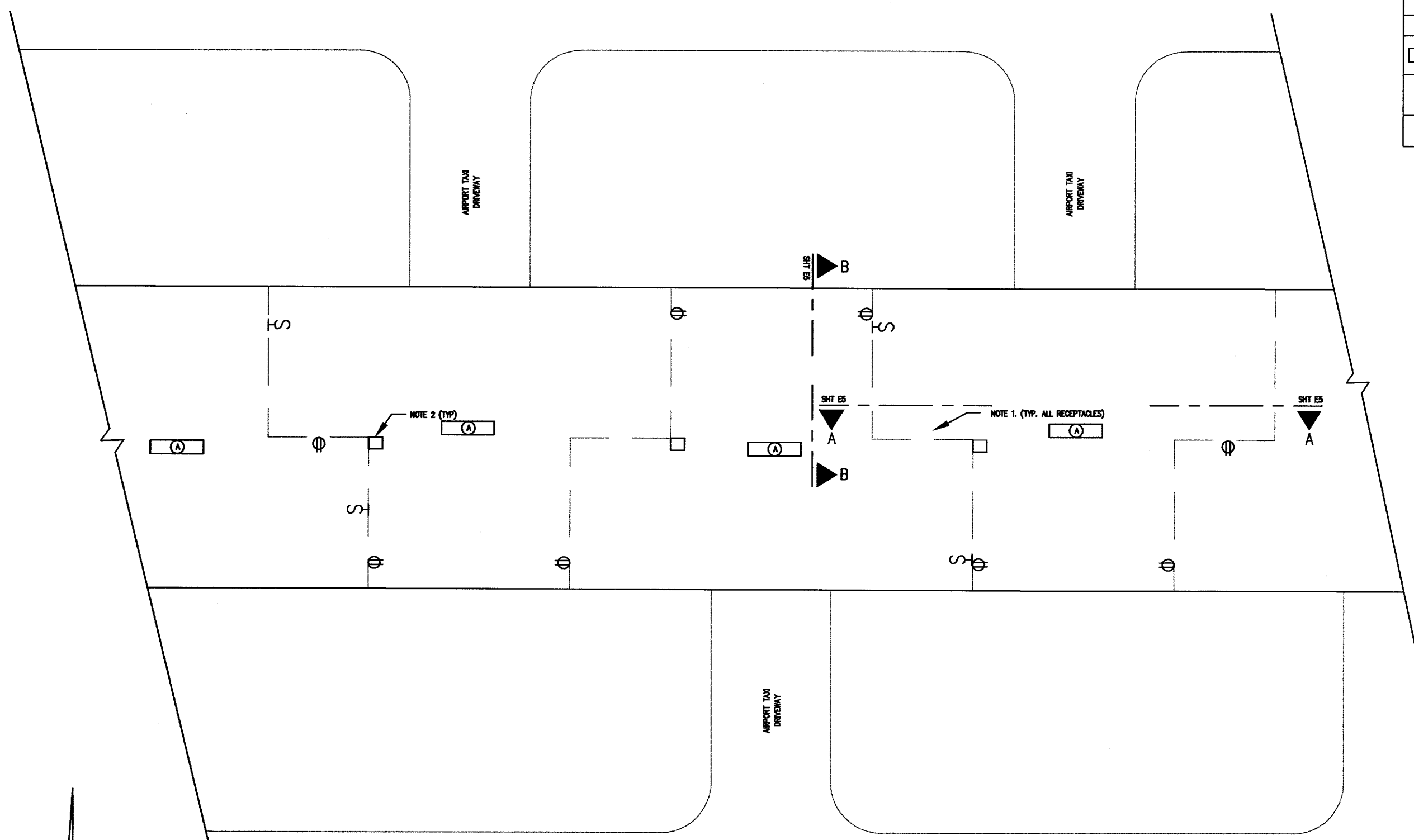
TOWN OF ADDISON, TEXAS

ADDISON AIRPORT TEE HANGAR LIGHTING HANGAR ROOF LIGHTING PLAN

McCREARY & ASSOCIATES, INC.
CONSULTING ENGINEERS
200 LA PRADERIE DRIVE #7 DALLAS, TEXAS 75205
972-499-8700

DESIGNED BY: W.H.G.	PROJECT: 97 180	SHEET NO. E3
DRAWN BY: M.E.G.	DATE: JANUARY, 2005	OF 17 SHEETS

LIGHTING AND RECEPTACLE LEGEND	
SYMBOLS	DESCRIPTION
(A)	FLUORESCENT FIXTURE
⊕	DUPLEX RECEPTACLE SEE E-XX DETAIL XX
§	WALL SWITCH, SPST



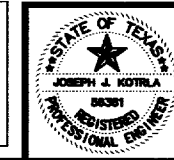
TYPICAL AIRPORT TEE HANGAR-LIGHTING
SCALE: 3/16" = 1'-0"

- NOTES:
1. ALL BOTTOM OF RECEPTACLE DISTANCE TO HANGAR FLOOR TO BE MINIMUM 24 INCHES TO BE ABOVE HANGAR ELECTRICAL AREA CLASSIFICATION OF 18 INCHES ABOVE GRADE.
 2. TERMINAL JUNCTION BOX FOR HANGAR WIRING.
 3. SEE SPECIFICATIONS FOR EQUIPMENT WIRING DEVICES.

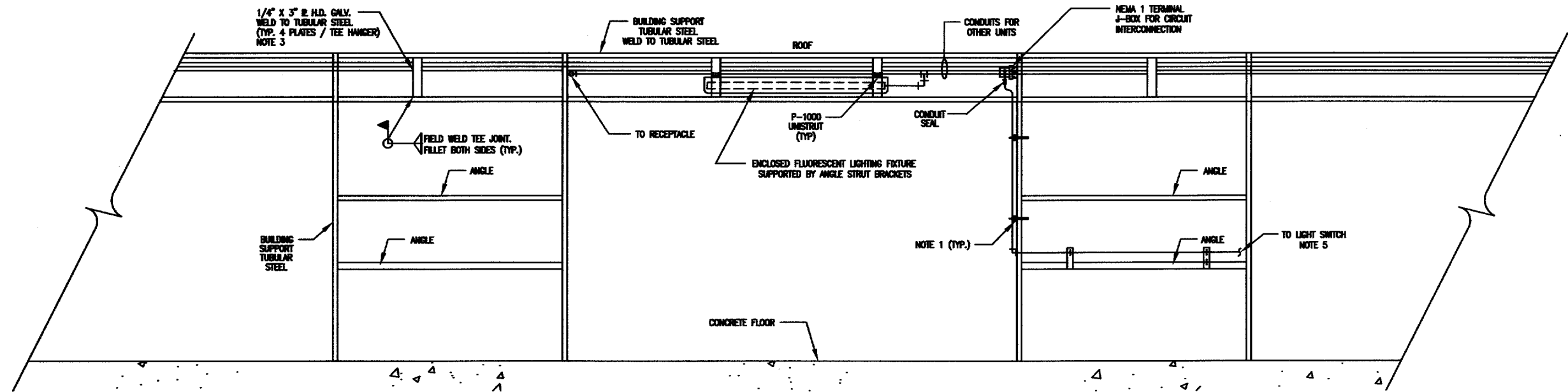


VERIFY SCALE
Bar is one inch on original drawing.
0 1
If not one inch on this sheet, adjust scale accordingly.

THESE DOCUMENTS ARE FOR BIDDING, CONSTRUCTION, AND PERMIT PURPOSES.
DATE: 1-12-05



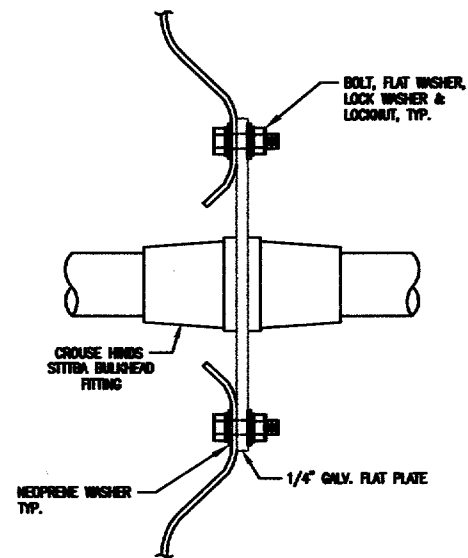
TOWN OF ADDISON, TEXAS		
ADDISON AIRPORT TEE HANGAR LIGHTING HANGAR ELECTRICAL PLAN		
McCREARY & ASSOCIATES, INC. CONSULTING ENGINEERS 4300 LBJ FREIGHT CENTER ST DALLAS, TEXAS 75244		
DESIGNED BY: W.H.G.	PROJECT: 97 180	SHEET NO. E4
DRAWN BY: M.E.G.	DATE: JANUARY, 2005	OF 07 SHEETS



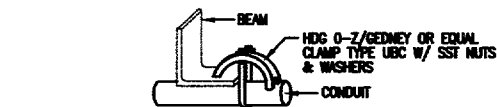
AIRPORT TEE HANGAR LIGHTING ELEVATION A-A
 SCALE: 3/8" = 1'-0"
TYPICAL CONDUIT LAYOUT

NOTES:

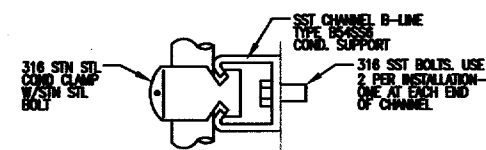
1. B-LINE 129A H.D. GALV. STRUT SUPPORT SHALL BE U-BOLTED TO BUILDING TUBULAR STEEL.
2. BOTTOM OF RECEPTACLES, SWITCHES OR ANY ELECTRICAL EQUIPMENT SHALL BE 18" MINIMUM ABOVE GRADE TO AVOID THE ELECTRICAL HAZARDOUS AREA PER NEC.
3. WELDING SHALL MEET AWS D1.1 STANDARDS. TUBULAR STEEL PAINT, RUST, CORROSION SHALL BE REMOVED TO CLEAN METAL BEFORE WELDING. GALVANIZING REPAIR SHALL CARBOLINE CARBO ZINC #11, GALV-WELD PRODUCTS GALV-WELD ALLOY, KOPPERS ORGANIC ZINC COATING, OR EQUAL.
4. CONDUIT TO SWITCH SHALL BE 3/4" RIGID ALUMINUM UP TO ELECTRICAL CONDUIT SEAL FITTINGS.
5. FURNISH SWITCHES AND ASSOCIATED CONDUITS TO MEET THE REQUIREMENTS OF



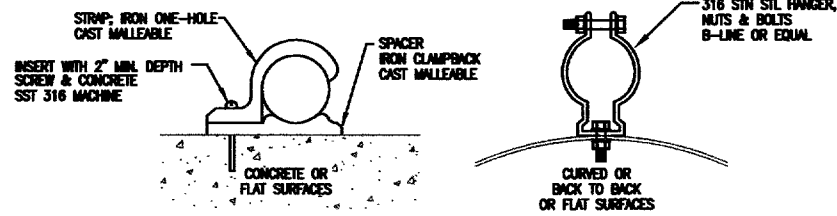
01 BULKHEAD FITTING FOR CONDUITS THROUGH GALV. CORRUGATED WALLS
 N.T.S.



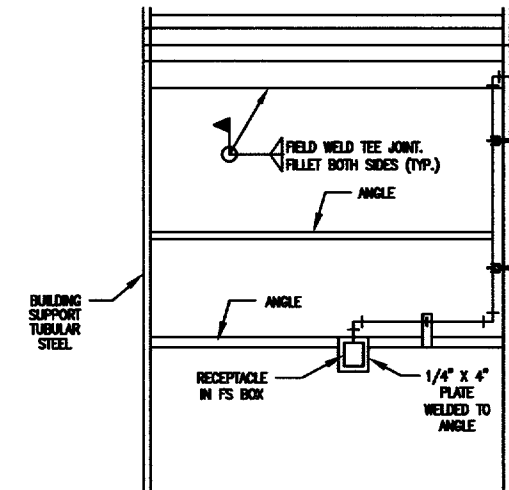
02 TYPICAL RIGHT ANGLE CONDUIT SUPPORT
 NOT TO SCALE



10 TYPICAL CONDUIT SUPPORT ON CONCRETE STRUCTURES FOR MULTIPLE CONDUIT RUNS
 NOT TO SCALE



11 TYPICAL CONDUIT SUPPORT SINGLE CONDUIT
 NOT TO SCALE



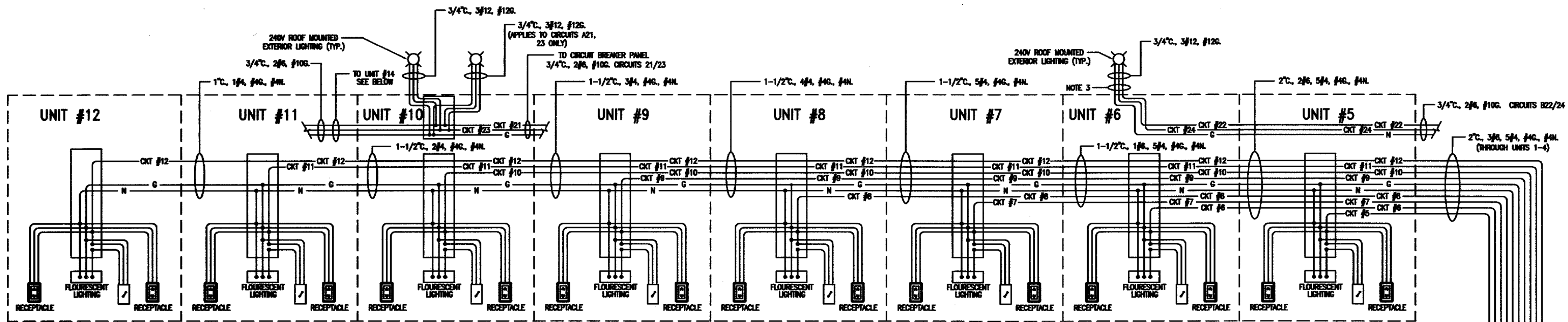
VERIFY SCALE
 Bar is one inch on original drawing.
 0 1
 If not one inch on this sheet, adjust scale accordingly.

THESE DOCUMENTS ARE FOR BIDDING, CONSTRUCTION, AND PERMIT PURPOSES.
 DATE: 1-16-05

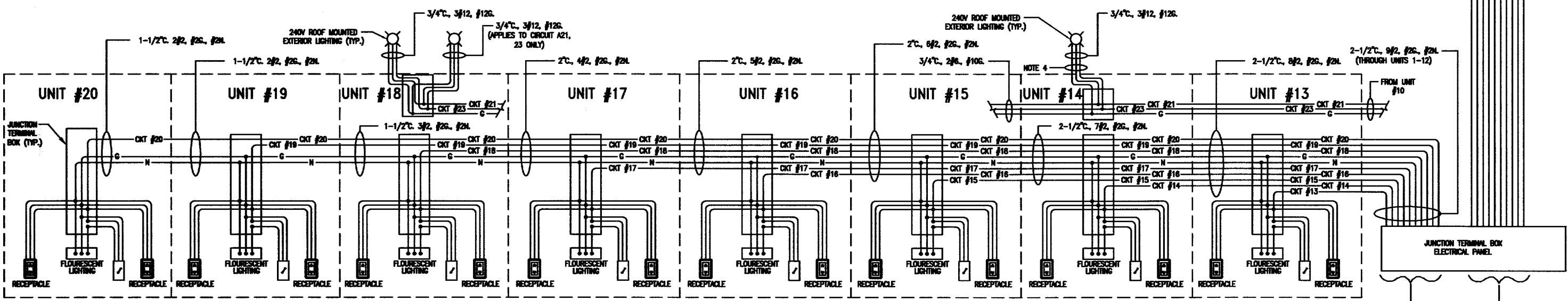
STATE OF TEXAS
 JOSEPH J. KOTRILA
 06301
 REGISTERED PROFESSIONAL ENGINEER

TOWN OF ADDISON, TEXAS
 ADDISON AIRPORT TEE HANGAR LIGHTING
 TYPICAL HANGAR ELEVATION

McCREARY & ASSOCIATES, INC.
 CONSULTING ENGINEERS
 6300 LAW FORESTWAY, SUITE 207, DALLAS, TEXAS 75249
 972-488-6700
 DESIGNED BY: W.H.G. PROJECT: 97 180
 DRAWN BY: M.E.G. DATE: JANUARY, 2005 SHEET NO. E5 OF E7 SHEETS



CIRCUITS #5, 6, 7, 8, 9, 10, 11, 12 WIRING DIAGRAM
 TYPICAL FOR EACH OF THE TWO TEE HANGARS
 NOT TO SCALE

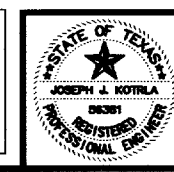


- NOTES:
1. WIRING AND CONDUIT SIZES FOR EXTENSION WIRING FROM JUNCTION BOX TO LIGHTING, SWITCHES AND RECEPTACLES SHALL BE THE SAME AS SHOWN FOR UNIT #1 AS SHOWN ON SHEET E8.
 2. FOR CIRCUITS 1-4 SEE SHEET E8.
 3. NO ROOF MOUNT UNITS IN UNIT #6 FOR CIRCUITS A22, 24.
 4. NO ROOF MOUNT UNITS IN UNIT #14 FOR CIRCUITS A21, 23.

CIRCUITS #13, 14, 15, 16, 17, 18, 19, 20, 21, WIRING DIAGRAM
 TYPICAL FOR EACH OF THE TWO TEE HANGARS
 NOT TO SCALE

VERIFY SCALE
 Bar is one inch on original drawing.
 0 1
 If not one inch on this sheet, adjust scale accordingly.

THESE DOCUMENTS ARE FOR BIDDING, CONSTRUCTION, AND PERMIT PURPOSES.
Joseph Wood
 DATE: 1-12-05

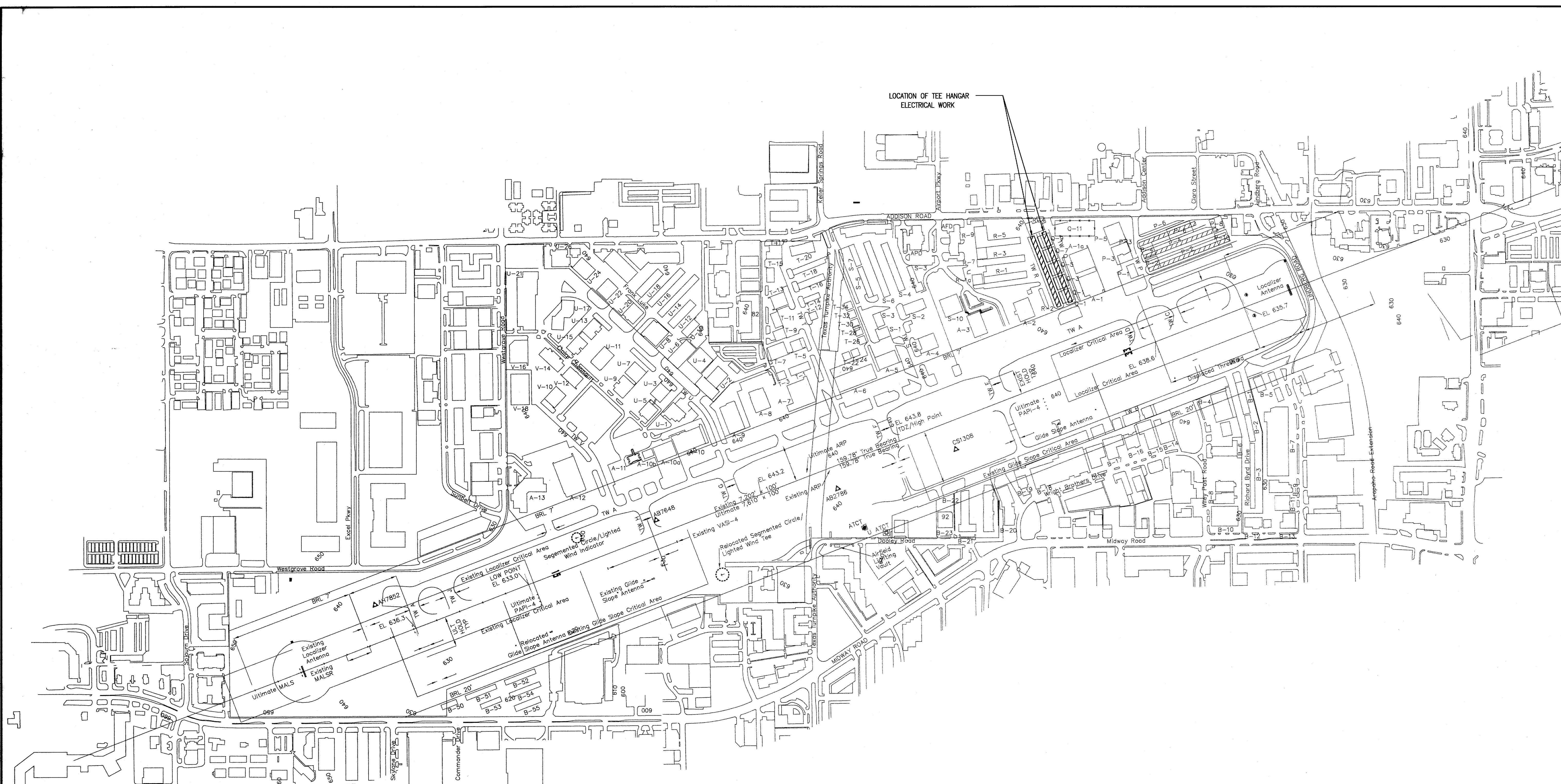


TOWN OF ADDISON, TEXAS

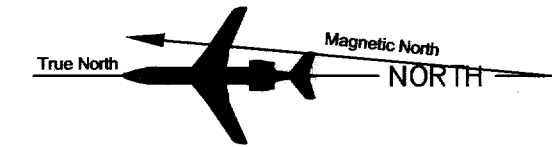
ADDISON AIRPORT TEE HANGAR LIGHTING
CIRCUIT DIAGRAM 5 THRU 21

McCREARY & ASSOCIATES, INC.
 CONSULTING ENGINEERS
 630 AMHERST DRIVE
 SUITE 100 FORT WORTH, TEXAS 76104

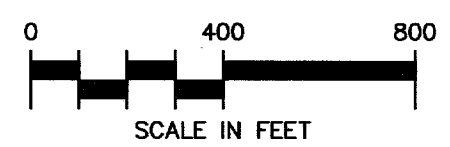
DESIGNED BY: W.H.G.	PROJECT: 97 180	SHEET NO. E7
DRAWN BY: M.E.G.	DATE: JANUARY, 2005	OF 17 SHEETS



ADDISON AIRPORT TEE HANGAR SITE LOCATION
SCALE: 1" = 400'-0"

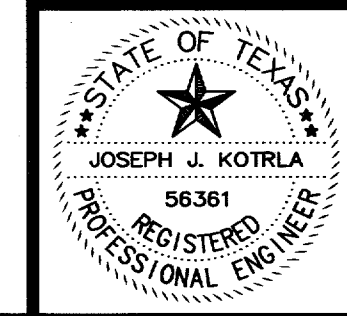


Magnetic Declination
4° 56' E (August 2004)
Annual Rate of Change
5" W (August 2004)



VERIFY SCALE
Bar is one inch on original drawing.
If not one inch on this sheet, adjust scale accordingly.

THESE DOCUMENTS ARE FOR BIDDING, CONSTRUCTION, AND PERMIT PURPOSES.
Amal Patel
DATE: 1-12-05



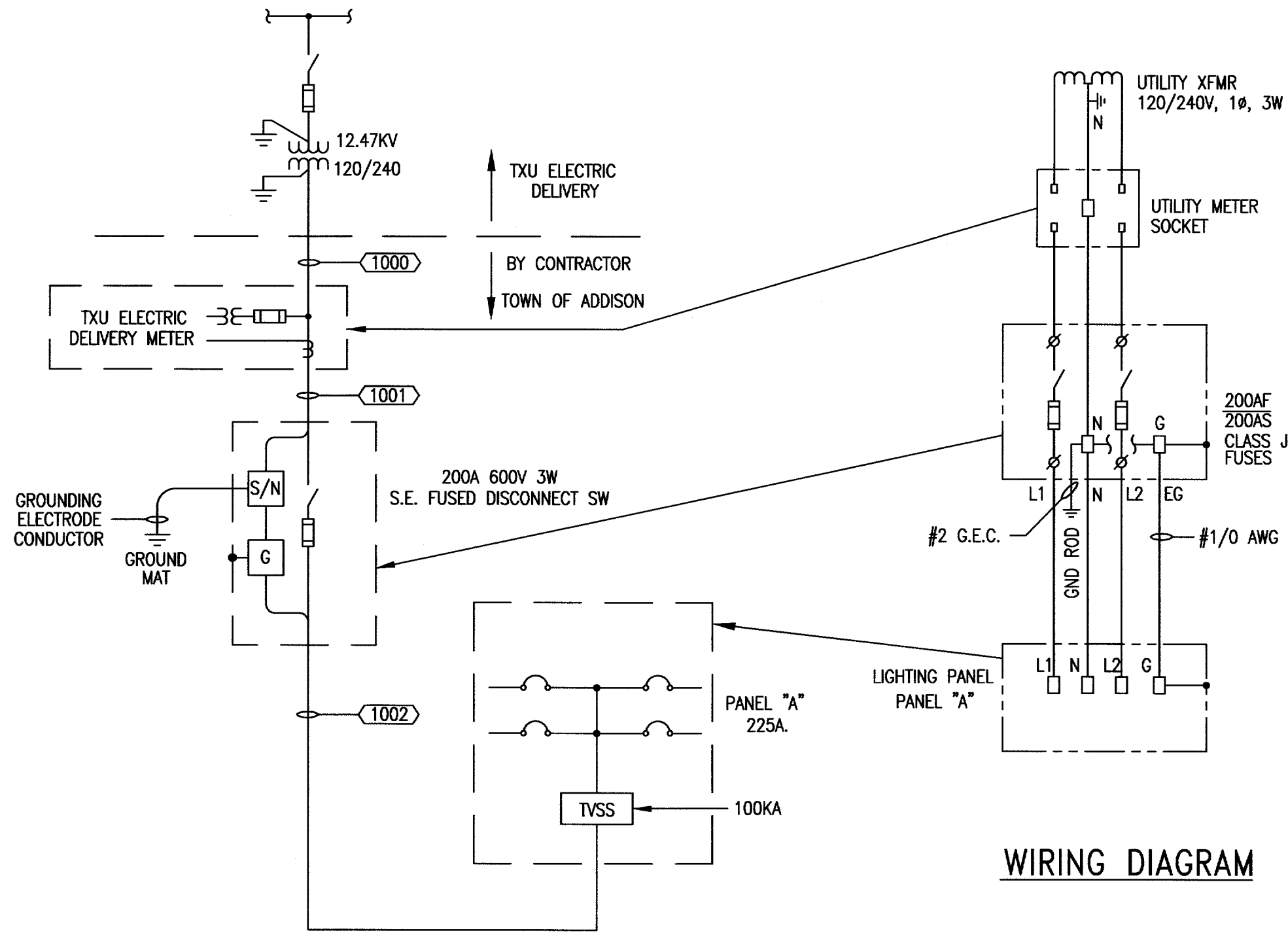
TOWN OF ADDISON, TEXAS		
ADDISON AIRPORT TEE HANGAR LIGHTING AIRPORT SITE LOCATION		
McCREARY & ASSOCIATES, INC.		
<small>CONSULTING ENGINEERS 972/439-8745 6310 LBJ FREEWAY SUITE 217 DALLAS, TEXAS 75240</small>		
DESIGNED BY: W.H.G.	PROJECT: 97 180	SHEET NO. E1
DRAWN BY: M.E.G.	DATE: JANUARY, 2005	OF E7 SHEETS

PANEL SCHEDULE									
NUMBER	A (B NOTE 1)			VOLTS		120/240V 1Ø 3WIRE			
LOCATION	MAIN ELECTRICAL ROOM			SIZE		225A.			
FED FROM	MCC-1			NEMA 1		MAIN LUGS ONLY			
	(SURFACE MOUNT)								
CIRCUIT DESCRIPTION	LOAD	BKR	CKT	CKT	CKT	LOAD	CIRCUIT DESCRIPTION	LOAD	CKT
TEE HANGAR UNIT #1 LIGHTING AND RECEPTACLE	0.89	20	1	2	20	0.89	TEE HANGAR UNIT #2 LIGHTING AND RECEPTACLE	0.89	20
TEE HANGAR UNIT #3 LIGHTING AND RECEPTACLE	0.89	20	3	4	20	0.89	TEE HANGAR UNIT #4 LIGHTING AND RECEPTACLE	0.89	20
TEE HANGAR UNIT #5 LIGHTING AND RECEPTACLE	0.89	20	5	6	20	0.89	TEE HANGAR UNIT #6 LIGHTING AND RECEPTACLE	0.89	20
TEE HANGAR UNIT #7 LIGHTING AND RECEPTACLE	0.89	20	7	8	20	0.89	TEE HANGAR UNIT #8 LIGHTING AND RECEPTACLE	0.89	20
TEE HANGAR UNIT #9 LIGHTING AND RECEPTACLE	0.89	20	9	10	20	0.89	TEE HANGAR UNIT #10 LIGHTING AND RECEPTACLE	0.89	20
TEE HANGAR UNIT #11 LIGHTING AND RECEPTACLE	0.89	20	11	12	20	0.89	TEE HANGAR UNIT #12 LIGHTING AND RECEPTACLE	0.89	20
TEE HANGAR UNIT #13 LIGHTING AND RECEPTACLE	0.89	20	13	14	20	0.89	TEE HANGAR UNIT #14 LIGHTING AND RECEPTACLE	0.89	20
TEE HANGAR UNIT #15 LIGHTING AND RECEPTACLE	0.89	20	15	16	20	0.89	TEE HANGAR UNIT #16 LIGHTING AND RECEPTACLE	0.89	20
TEE HANGAR UNIT #17 LIGHTING AND RECEPTACLE	0.89	20	17	18	20	0.89	TEE HANGAR UNIT #18 LIGHTING AND RECEPTACLE	0.89	20
TEE HANGAR UNIT #19 LIGHTING AND RECEPTACLE	0.89	20	19	20	20	0.89	TEE HANGAR UNIT #20 LIGHTING AND RECEPTACLE	0.89	20
LIGHTING - EXTERIOR ROOF MOUNTED UNITS 10, 14, 18	1.24	20	21	22	20	.62	LIGHTING - EXTERIOR ROOF MOUNTED UNITS 2 AND 6		
SPARE		20	25	26	20		SPARE		
SPARE		20	27	28	20		SPARE		
SPARE		20	29	30	20		SPARE		
TVSS									

MAIN BUS: TIN PLATED COPPER
TVSS: 120KA

NEUTRAL GROUND

NOTES:
1. PANEL SCHEDULE FOR PANEL 'B' SAME AS PANEL 'A' EXCEPT LOAD FOR CIRCUITS B21/23 IS 0.93 KVA AND FOR CIRCUITS B22/23 IS 0.62 KVA.

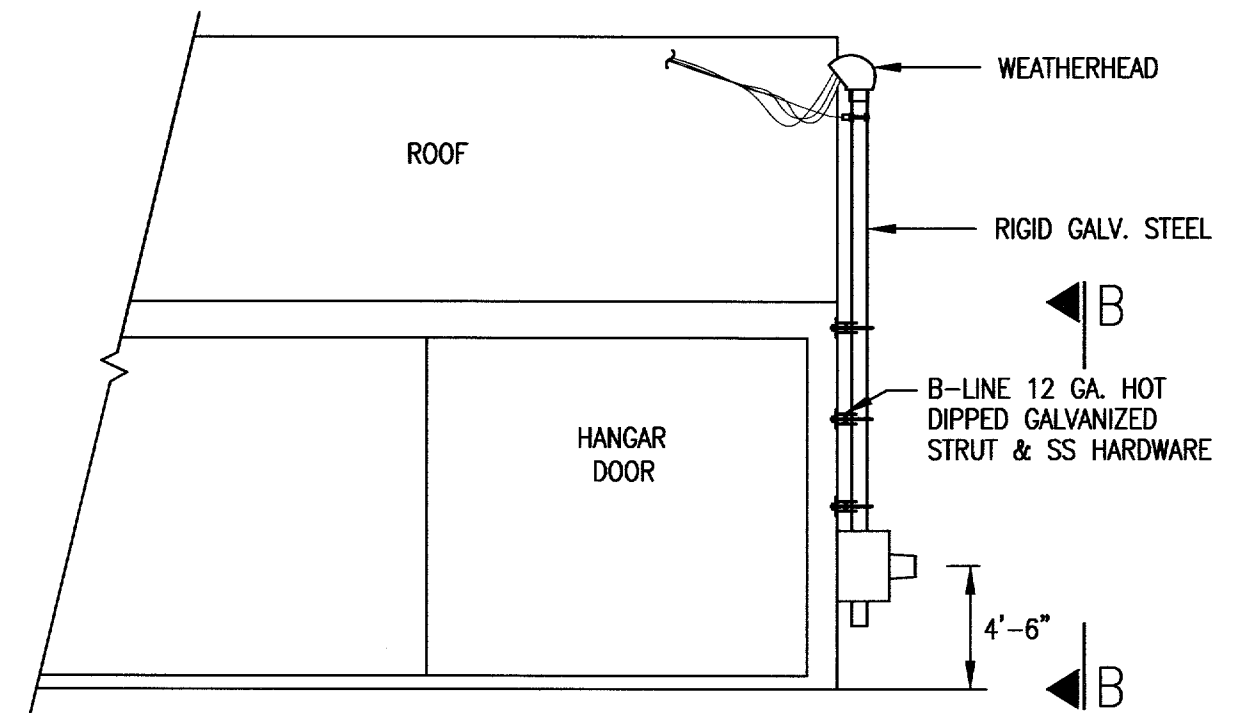


WIRING DIAGRAM

ONE LINE DIAGRAM LEGEND	
	POWER TRANSFORMER
	CIRCUIT BREAKER
	FUSED DISCONNECT SWITCH
	GROUND WIRE
	FUSED CONTROL POWER TRANSFORMER
	G = GROUND
	S/N SOLID NEUTRAL

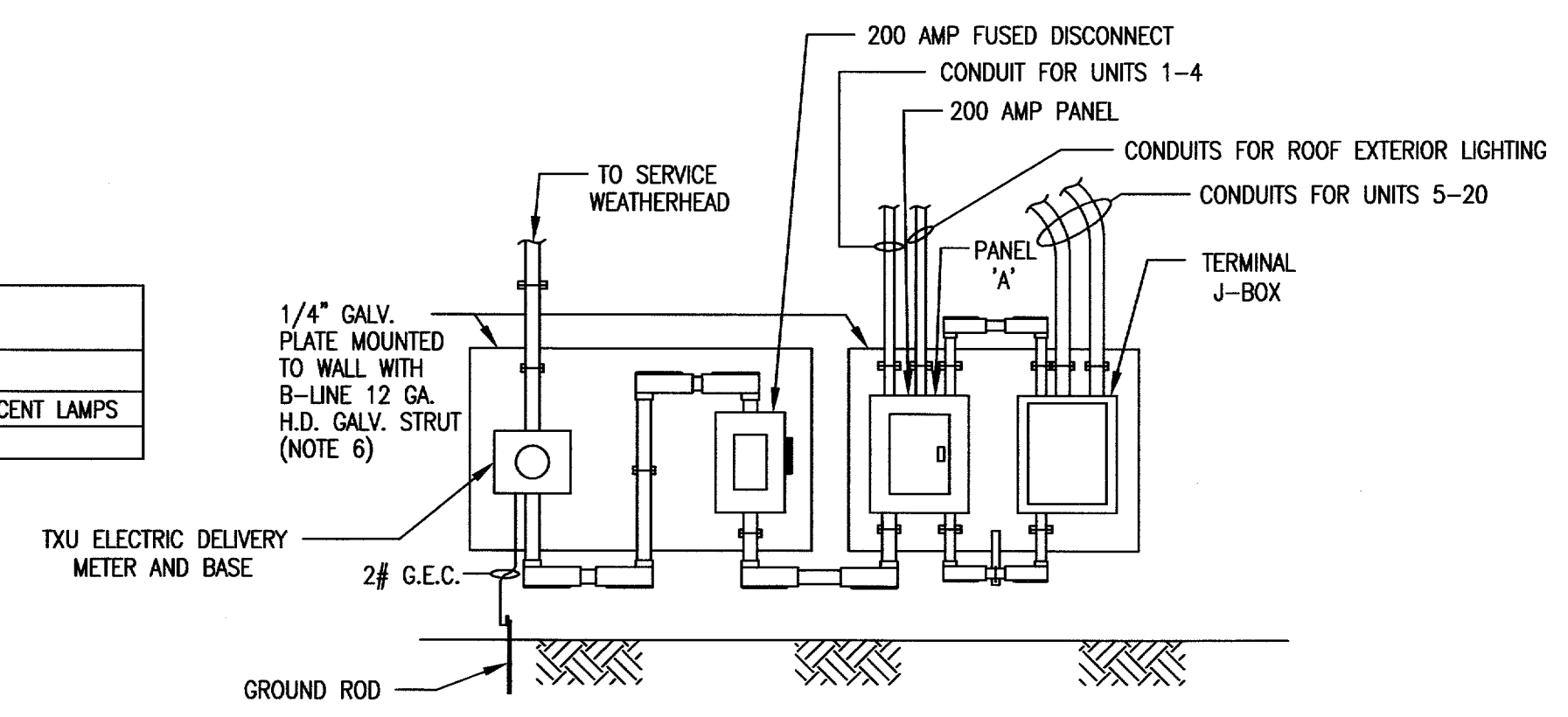
ONE LINE DIAGRAM
TYPICAL 2 SERVICES

CONDUIT AND CABLE SCHEDULE FOR 120/240 VOLT POWER WIRING					
TAG	WIRING	CONDUIT	SOURCE	DESTINATION	COMMENTS
1000	2 #4/0, #2 N	3" C	SERVICE POLE	SERVICE ENTRANCE METER	VERIFY REQUIREMENTS BY TXU ELECTRIC DELIVERY
1001	2 #4/0, #2 N, #2 GEC	2" C	SERVICE ENTRANCE METER SOCKET	SERVICE ENTRANCE SAFETY DISCONNECT SWITCH	#2 GEC TO GROUND
1002	2 #4/0, #2 N #1/0 EGC	2" C	SERVICE ENTRANCE SAFETY DISC. SWITCH	PANEL 'A'	



01 DETAIL SERVICE ENTRANCE
N.T.S.

LIGHT FIXTURE SCHEDULE							
MARK	DESCRIPTION	VOLTS	TYPE	LAMPS	MANUFACTURER	CATALOG NUMBER	COMMENTS
A	HANGAR INTERIOR LTC.	120	FLUORESCENT	800ma	LITHONIA	DMS296T12H0240	FURNISH AND INSTALL 96", T-12 RS 800ma HO FLUORESCENT LAMPS
B	EXTERIOR ROADWAY LIGHTING	240	METAL HALIDE	250 WATT	HOLOPHANE	G250MH00LWF	FURNISH AND INSTALL MH LAMPS. PROVIDE PHOTOCELLS

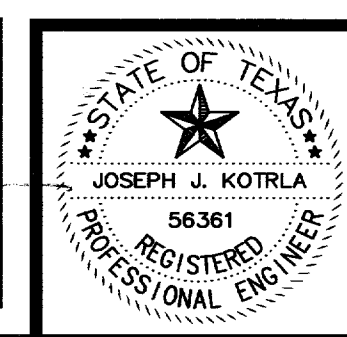


SECTION B-B
N.T.S. (NOTE 5)

- NOTES:
- METER BASE WILL BE FURNISHED BY CONTRACTOR AND SHALL BE INSTALLED PER TXU ELECTRIC DELIVERY BY THE CONTRACTOR 4' TO 6' ABOVE GRADE INSTALL PER SPECIFICATIONS.
 - CONTRACTOR SHALL BE RESPONSIBLE FOR CONDUIT TO WEATHERHEAD FOR CONNECTION TO TXU ELECTRIC DELIVERY.
 - REF ELECTRICAL PLAN VIEW FOR EXACT LOCATION OF DISCONNECT. REF SITE PLAN FOR LOCATION OF SERVICE.
 - INSTALL NO. 2 AWG CU GROUND TO 3/4" X 10' CU CLAD DRIVEN GROUND ROD. REF DETAIL 04/E1.
 - INSTALL MIRROR IMAGE FOR 2ND HANGAR BUILDING.
 - SUPPORT STRUT SHALL BE ANCHORED TO BUILDING SUPPORT STEEL.

VERIFY SCALE
Bar is one inch on original drawing.
If not one inch on this sheet, adjust scale accordingly.

THESE DOCUMENTS ARE FOR BIDDING, CONSTRUCTION, AND PERMIT PURPOSES.
DATE: 1-14-05

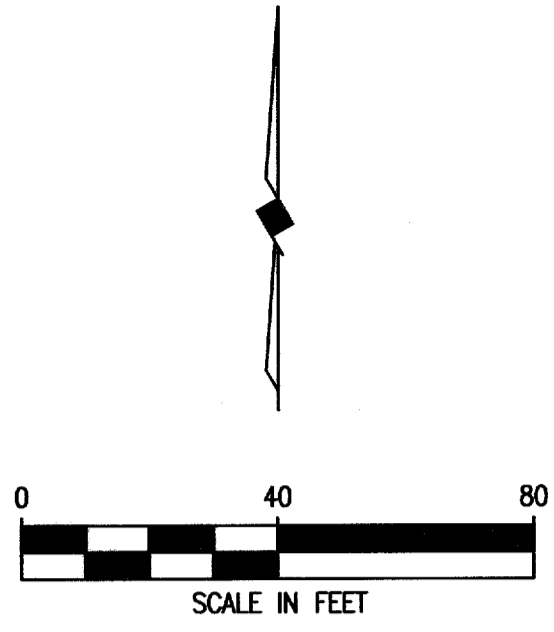


TOWN OF ADDISON, TEXAS

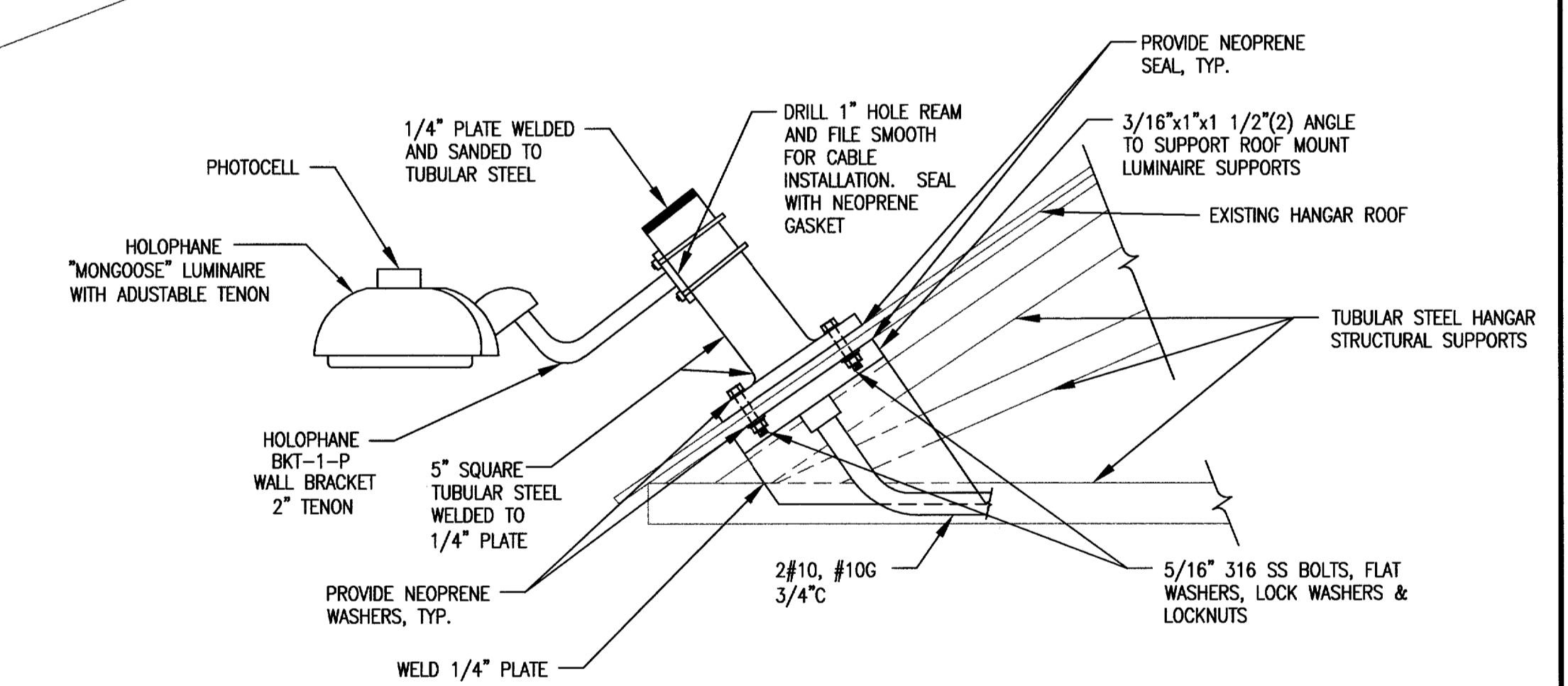
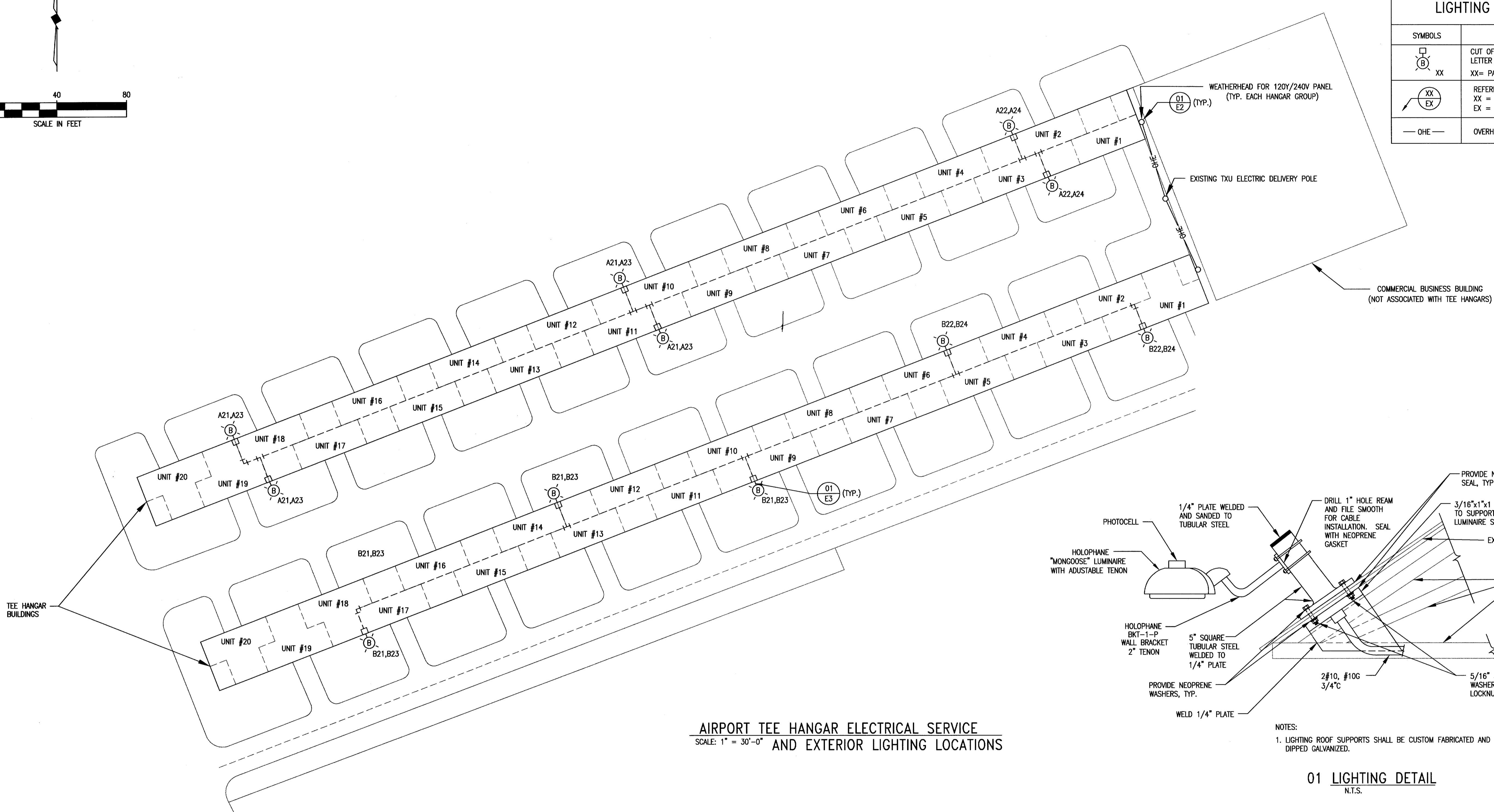
ADDISON AIRPORT TEE HANGAR LIGHTING ELECTRICAL ONE LINE

McCREARY & ASSOCIATES, INC.
CONSULTING ENGINEERS
6310 LEW FERRYWAY, SUITE 217 DALLAS, TEXAS 75240
972/488-8746

DESIGNED BY: W.H.G.	PROJECT: 97 180	SHEET NO. E2
DRAWN BY: M.E.G.	DATE: JANUARY, 2005	OF E7 SHEETS



LIGHTING LEGEND	
SYMBOLS	DESCRIPTION
	CUT OFF HID FIXTURE LETTER IN FIXTURE DENOTES TYPE XX= PANEL, CKT. #
	REFERENCE DETAIL SYMBOL XX = DETAIL NUMBER EX = ELECTRICAL SHEET NUMBER
	OVERHEAD ELECTRIC DISTRIBUTION



**AIRPORT TEE HANGAR ELECTRICAL SERVICE
AND EXTERIOR LIGHTING LOCATIONS**

SCALE: 1" = 30'-0"

NOTES:
1. LIGHTING ROOF SUPPORTS SHALL BE CUSTOM FABRICATED AND HOT DIPPED GALVANIZED.

01 LIGHTING DETAIL
N.T.S.

TOWN OF ADDISON, TEXAS

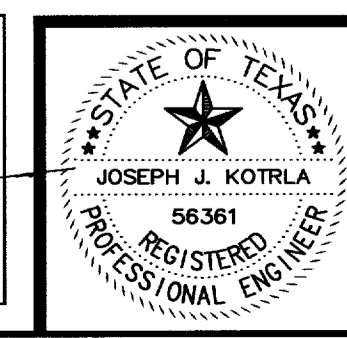
**ADDISON AIRPORT TEE HANGAR LIGHTING
HANGAR ROOF LIGHTING PLAN**

McCREARY & ASSOCIATES, INC.
CONSULTING ENGINEERS
6310 LBJ FREEWAY SUITE 217 DALLAS, TEXAS 75240
972/458-8745
972/458-8745

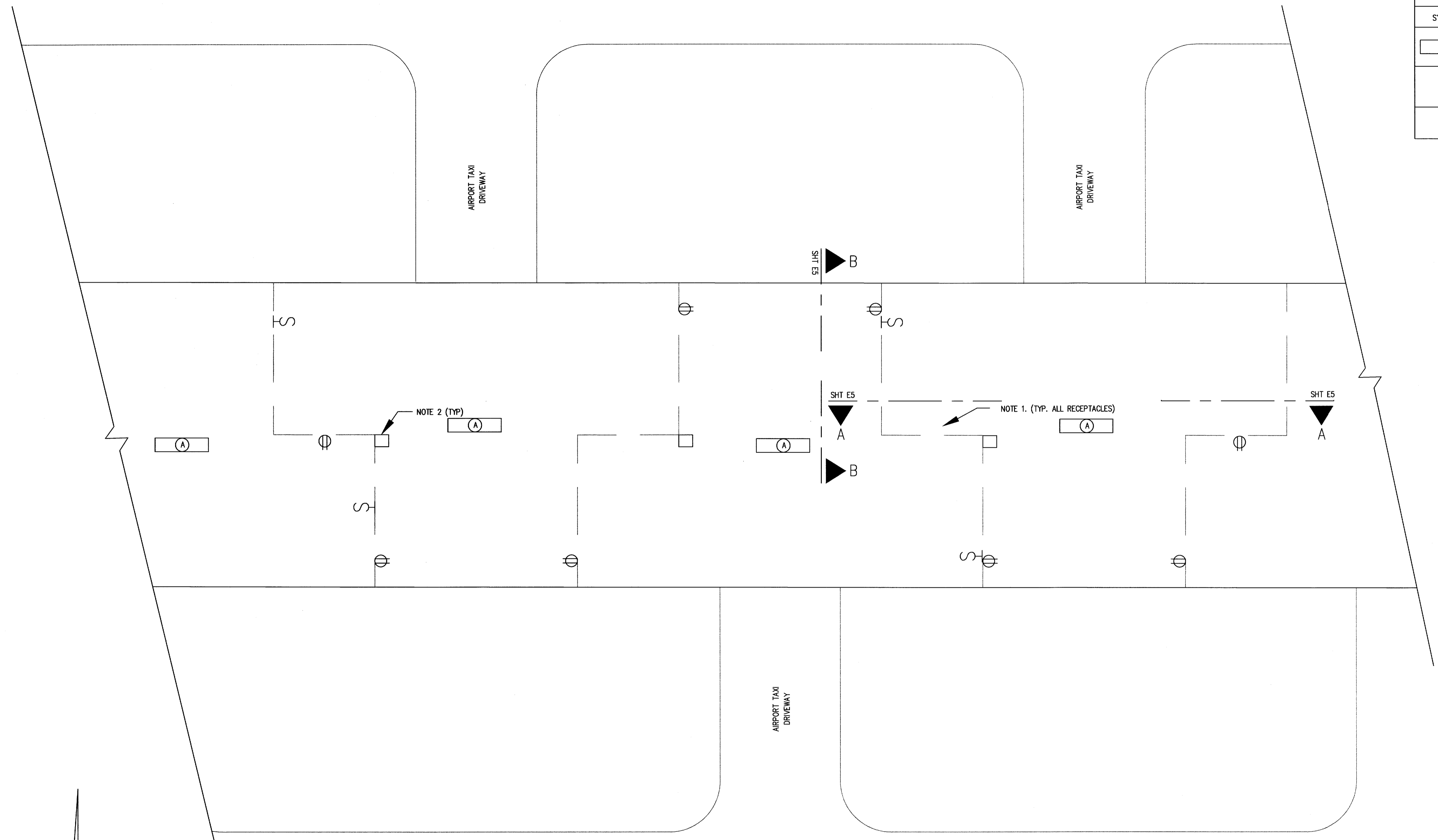
DESIGNED BY: <u>W.H.G.</u>	PROJECT: <u>97 180</u>	SHEET NO. <u>E3</u>
DRAWN BY: <u>M.E.G.</u>	DATE: <u>JANUARY, 2005</u>	OF <u>E7</u> SHEETS

VERIFY SCALE
Bar is one inch on original drawing.
0 1
If not one inch on this sheet, adjust scale accordingly.

THESE DOCUMENTS ARE FOR BIDDING, CONSTRUCTION, AND PERMIT PURPOSES.
Joseph J. Kotrla
DATE: 1-18-05



LIGHTING AND RECEPTACLE LEGEND	
SYMBOLS	DESCRIPTION
(A)	FLUORESCENT FIXTURE
⊕	DUPLEX RECEPTACLE SEE E-XX DETAIL XX
S	WALL SWITCH, SPST

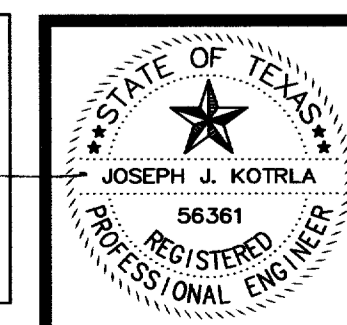


TYPICAL AIRPORT TEE HANGAR—LIGHTING
SCALE: 3/16" = 1'-0"

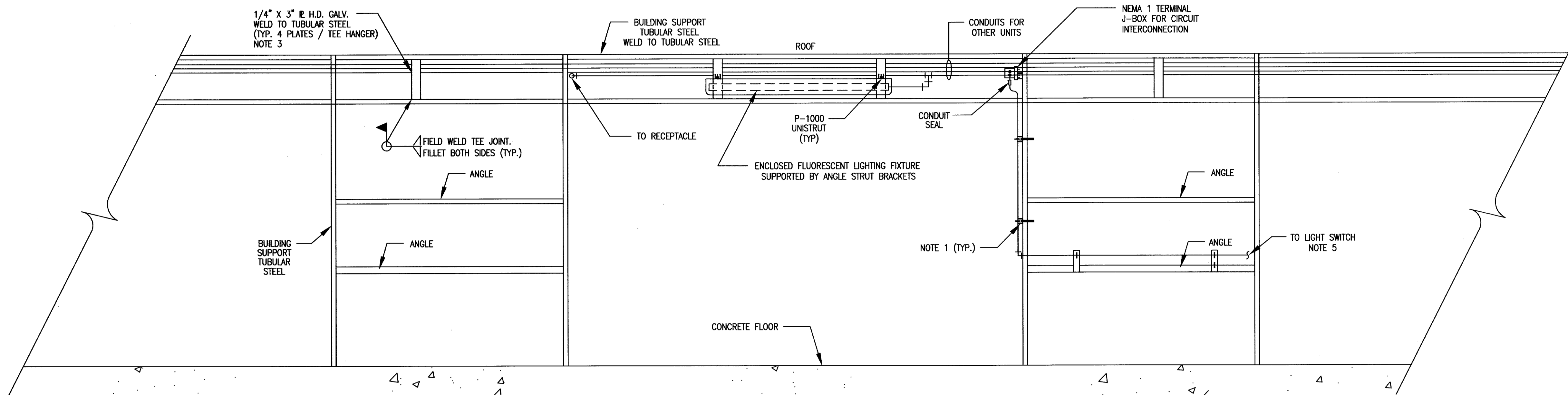
- NOTES:
1. ALL BOTTOM OF RECEPTACLE DISTANCE TO HANGAR FLOOR TO BE MINIMUM 24 INCHES TO BE ABOVE HANGAR ELECTRICAL AREA CLASSIFICATION OF 18 INCHES ABOVE GRADE.
 2. TERMINAL JUNCTION BOX FOR HANGAR WIRING.
 3. SEE SPECIFICATIONS FOR EQUIPMENT WIRING DEVICES.

VERIFY SCALE
Bar is one inch on original drawing.
0 1
If not one inch on this sheet, adjust scale accordingly.

THESE DOCUMENTS ARE FOR BIDDING, CONSTRUCTION, AND PERMIT PURPOSES.
Joseph J. Kotrla
DATE: 1-12-05



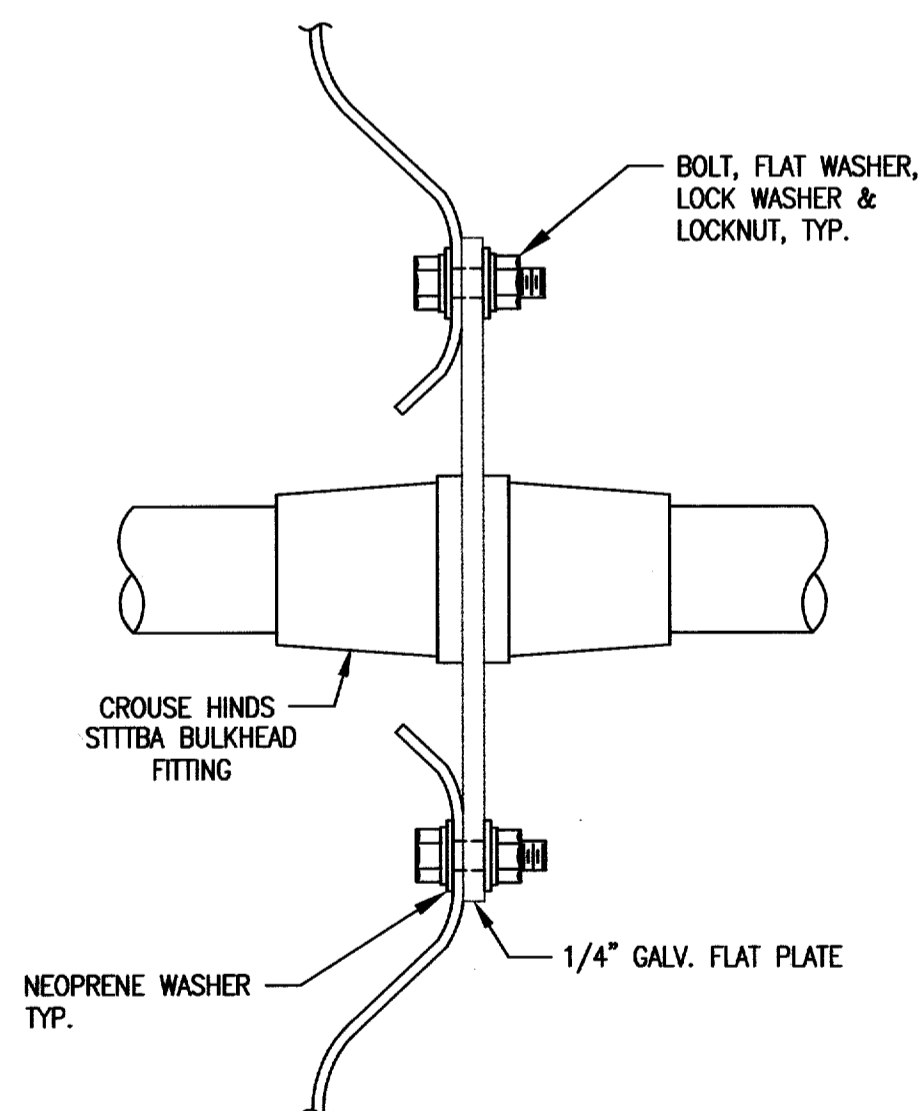
TOWN OF ADDISON, TEXAS		
ADDISON AIRPORT TEE HANGAR LIGHTING HANGAR ELECTRICAL PLAN		
McCREARY & ASSOCIATES, INC. CONSULTING ENGINEERS 972/458-8745 6310 LBJ FREEWAY SUITE 217 DALLAS, TEXAS 75240		
DESIGNED BY: W.H.G.	PROJECT: 97 180	SHEET NO. E4
DRAWN BY: M.E.G.	DATE: JANUARY, 2005	OF E7 SHEETS



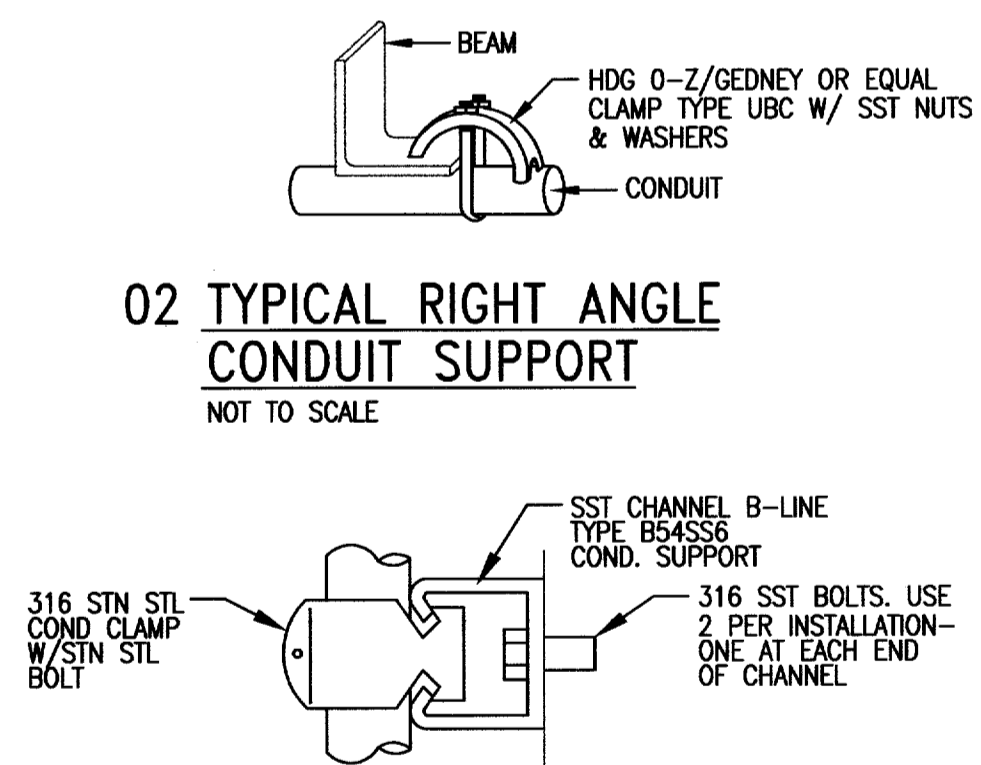
AIRPORT TEE HANGAR LIGHTING ELEVATION A-A
 TYPICAL CONDUIT LAYOUT
 SCALE: 3/8" = 1'-0"

NOTES:

1. B-LINE 12GA. H.D. GALV. STRUT SUPPORT SHALL BE U-BOLTED TO BUILDING TUBULAR STEEL.
2. BOTTOM OF RECEPTACLES, SWITCHES OR ANY ELECTRICAL EQUIPMENT SHALL BE 18" MINIMUM ABOVE GRADE TO AVOID THE ELECTRICAL HAZARDOUS AREA PER NEC.
3. WELDING SHALL MEET AWS D1.1 STANDARDS. TUBULAR STEEL PAINT, RUST, CORROSION SHALL BE GROUND TO CLEAN METAL BEFORE WELDING. GALVANIZING REPAIR SHALL CARBOLINE CARBO ZINC #11, GALV-WELD PRODUCTS GALV-WELD ALLOY, KOPPERS ORGANIC ZINC COATING, OR EQUAL.
4. CONDUIT TO SWITCH SHALL BE 3/4" RIGID ALUMINUM UP TO ELECTRICAL CONDUIT SEAL.
5. FURNISH SWITCHES AND ASSOCIATED CONDUITS TO MEET THE REQUIREMENTS OF

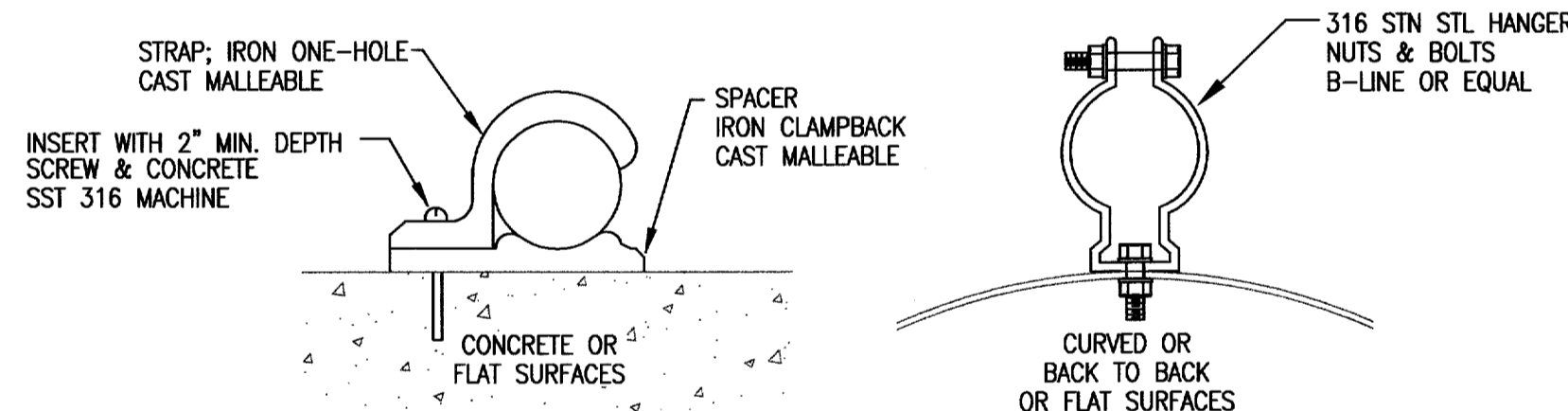


01 BULKHEAD FITTING FOR CONDUITS THROUGH GALV. CORRUGATED WALLS
 N.T.S.

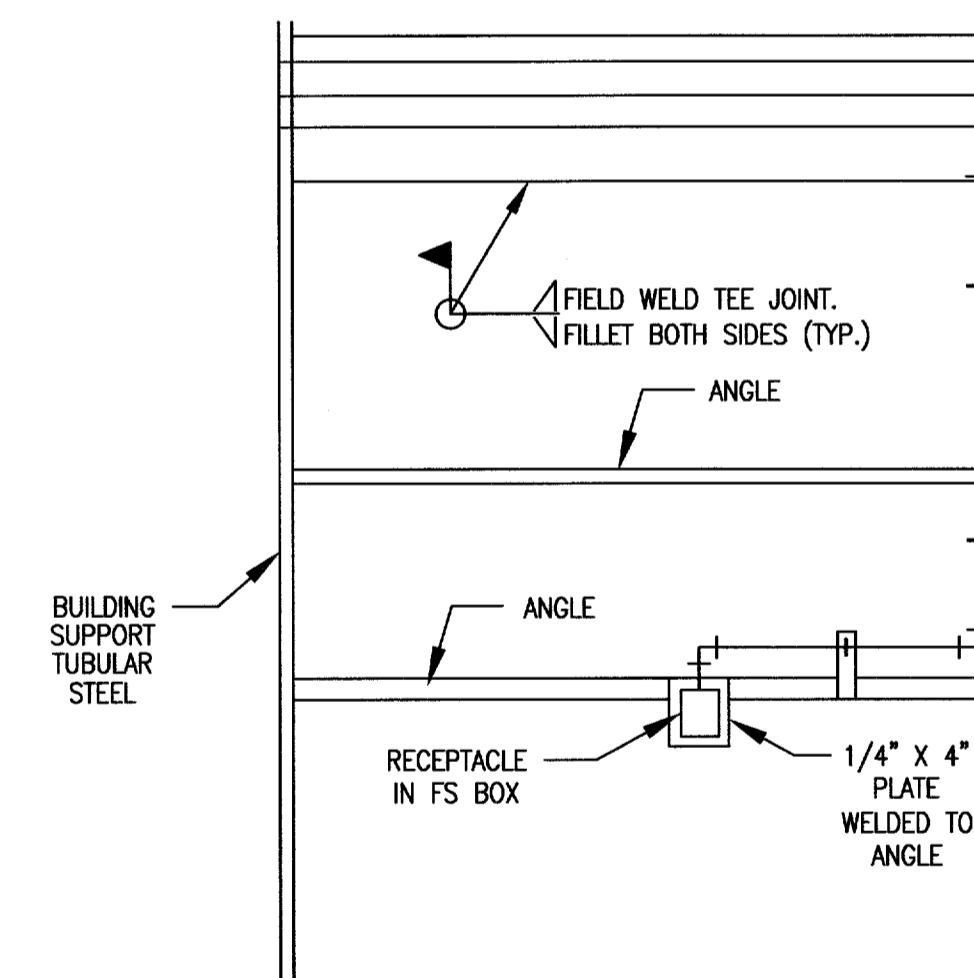


02 TYPICAL RIGHT ANGLE CONDUIT SUPPORT
 NOT TO SCALE

10 TYPICAL CONDUIT SUPPORT ON CONCRETE STRUCTURES FOR MULTIPLE CONDUIT RUNS
 NOT TO SCALE

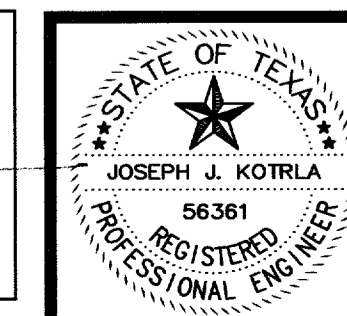


11 TYPICAL CONDUIT SUPPORT SINGLE CONDUIT
 NOT TO SCALE



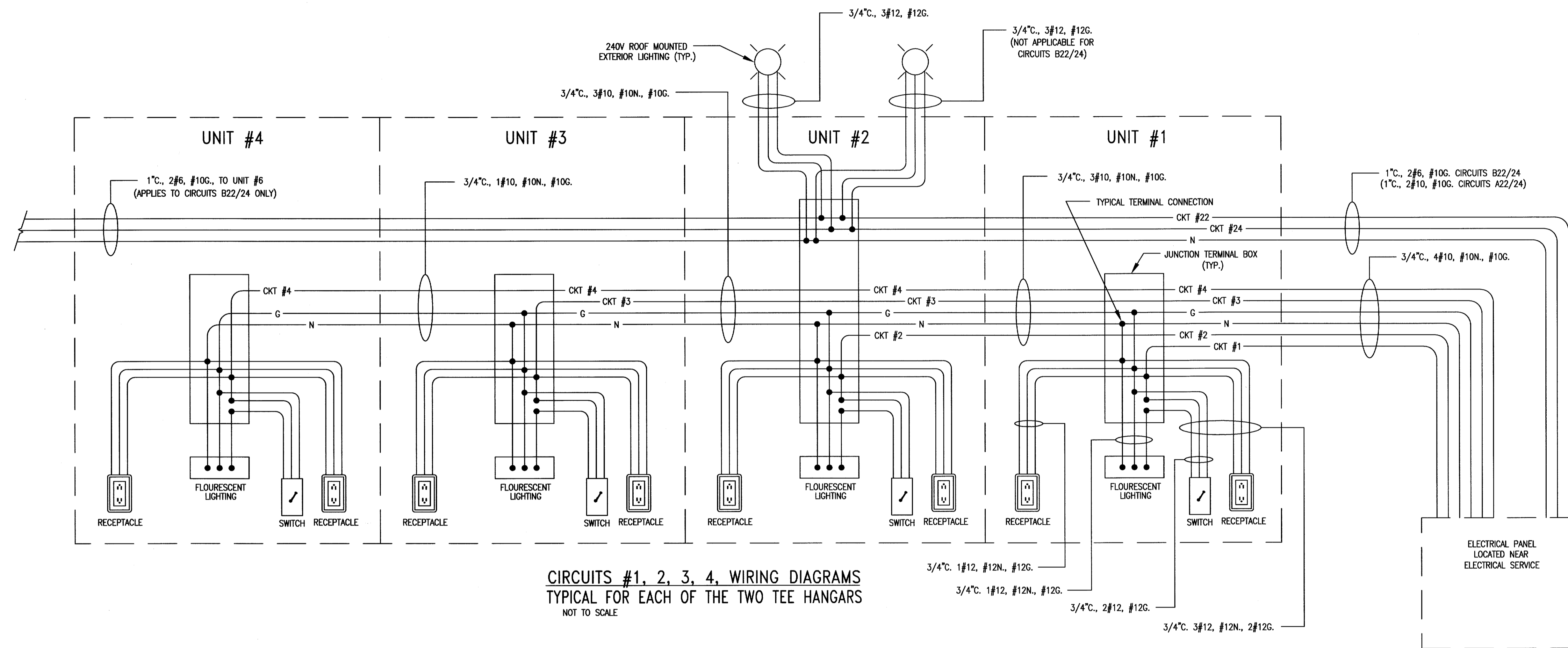
VERIFY SCALE
 Bar is one inch on original drawing.
 0 1
 If not one inch on this sheet, adjust scale accordingly.

THESE DOCUMENTS ARE FOR BIDDING, CONSTRUCTION, AND PERMIT PURPOSES.
 DATE: 1-14-05



TOWN OF ADDISON, TEXAS
 ADDISON AIRPORT TEE HANGAR LIGHTING
 TYPICAL HANGAR ELEVATION

McCREARY & ASSOCIATES, INC.
 CONSULTING ENGINEERS 972/458-8745
 6310 LBJ FREEWAY SUITE 217 DALLAS, TEXAS 75240
 DESIGNED BY: W.H.G. PROJECT: 97 180 SHEET NO. E5
 DRAWN BY: M.E.G. DATE: JANUARY, 2005 OF E7 SHEETS

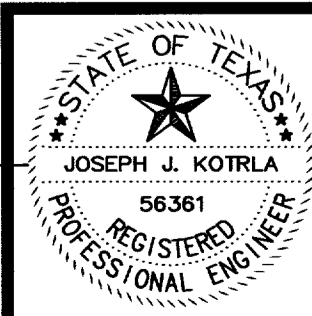


CIRCUITS #1, 2, 3, 4, WIRING DIAGRAMS
TYPICAL FOR EACH OF THE TWO TEE HANGARS
NOT TO SCALE

- NOTES:
1. WIRING AND CONDUIT SIZES FOR EXTENSION WIRING FROM JUNCTION TERMINAL BOX TO LIGHTING, SWITCH AND RECEPTACLES SHALL BE THE SAME AS SHOWN IN UNIT #1.
 2. FOR CIRCUITS 5-20 SEE SHEET E7.

VERIFY SCALE
Bar is one inch on original drawing.
0 1
If not one inch on this sheet, adjust scale accordingly.

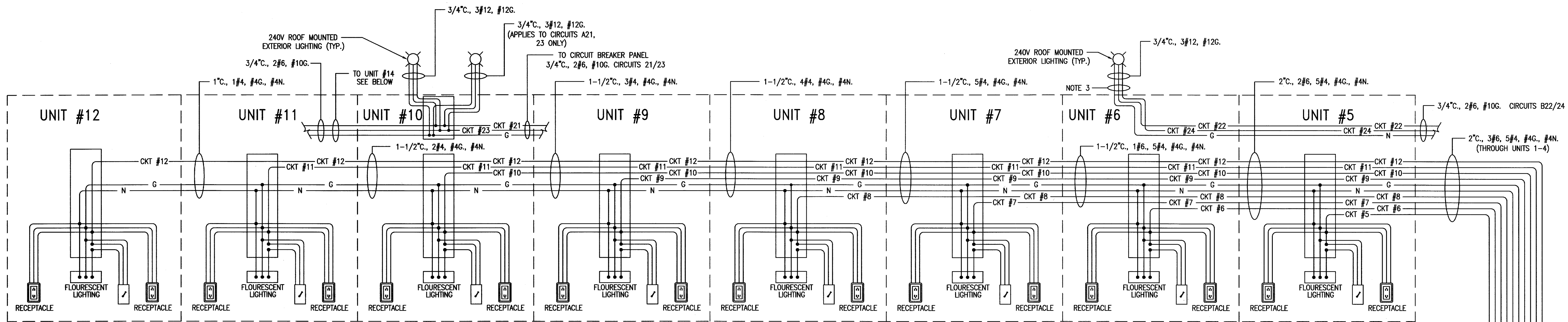
THESE DOCUMENTS ARE FOR BIDDING, CONSTRUCTION, AND PERMIT PURPOSES.
DATE: 1-18-05



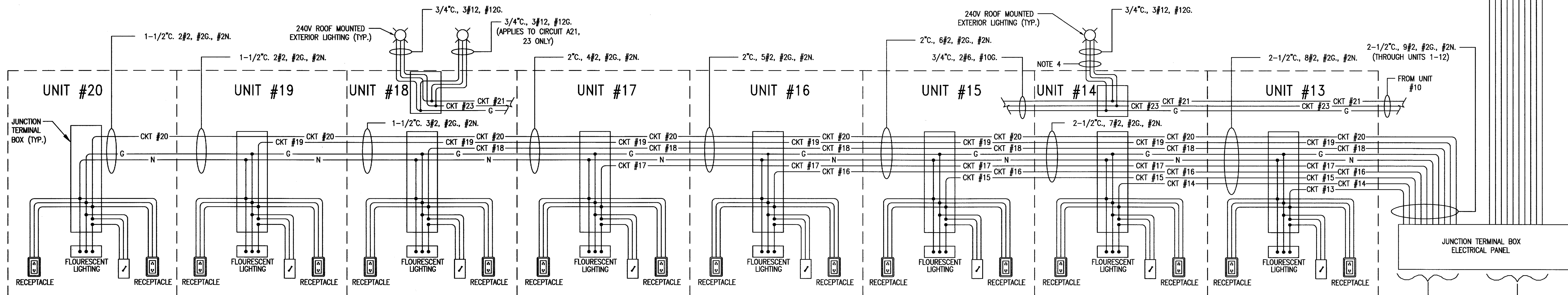
TOWN OF ADDISON, TEXAS
ADDISON AIRPORT TEE HANGAR LIGHTING
CIRCUIT DIAGRAMS 1 THRU 4

McCREARY & ASSOCIATES, INC.
CONSULTING ENGINEERS 972/458-8745
6310 LBJ FREEWAY SUITE 217 DALLAS, TEXAS 75240

DESIGNED BY: W.H.G.	PROJECT: 97 180	SHEET NO. E6
DRAWN BY: M.E.G.	DATE: JANUARY, 2005	OF E7 SHEETS



CIRCUITS #5, 6, 7, 8, 9, 10, 11, 12 WIRING DIAGRAM
 TYPICAL FOR EACH OF THE TWO TEE HANGARS
 NOT TO SCALE

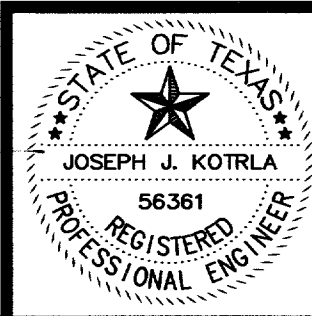


- NOTES:
1. WIRING AND CONDUIT SIZES FOR EXTENSION WIRING FROM JUNCTION BOX TO LIGHTING, SWITCHES AND RECEPTACLES SHALL BE THE SAME AS SHOWN FOR UNIT #1 AS SHOWN ON SHEET E6.
 2. FOR CIRCUITS 1-4 SEE SHEET E6.
 3. NO ROOF MOUNT UNITS IN UNIT #6 FOR CIRCUITS A22, 24.
 4. NO ROOF MOUNT UNITS IN UNIT #14 FOR CIRCUITS A21, 23.

CIRCUITS #13, 14, 15, 16, 17, 18, 19, 20, 21, WIRING DIAGRAM
 TYPICAL FOR EACH OF THE TWO TEE HANGARS
 NOT TO SCALE

VERIFY SCALE
 Bar is one inch on original drawing.
 0 1
 If not one inch on this sheet, adjust scale accordingly.

THESE DOCUMENTS ARE FOR BIDDING, CONSTRUCTION, AND PERMIT PURPOSES.
Joseph J. Kotrla
 DATE: 1-12-05



TOWN OF ADDISON, TEXAS

ADDISON AIRPORT TEE HANGAR LIGHTING
CIRCUIT DIAGRAM 5 THRU 21

McCREARY & ASSOCIATES, INC.
 CONSULTING ENGINEERS 972/458-8745
 6310 LBJ FREEWAY SUITE 217 DALLAS, TEXAS 75240

DESIGNED BY: W.H.G.	PROJECT: 97 180	SHEET NO. E7
DRAWN BY: M.E.G.	DATE: JANUARY, 2005	OF E7 SHEETS