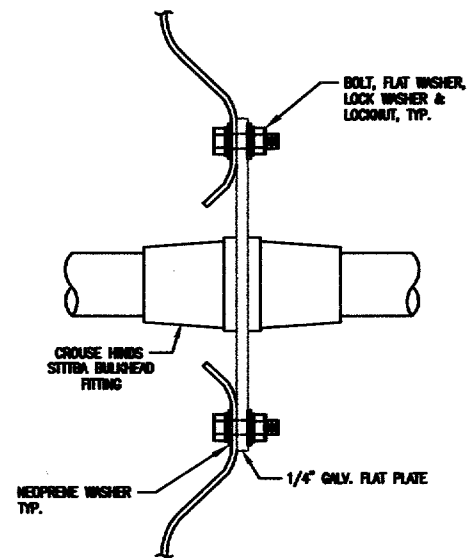


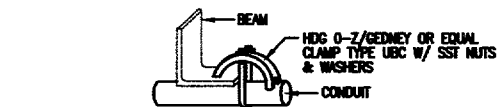
AIRPORT TEE HANGAR LIGHTING ELEVATION A-A
 SCALE: 3/8" = 1'-0"
TYPICAL CONDUIT LAYOUT

NOTES:

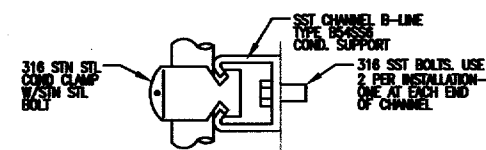
1. B-LINE 129A H.D. GALV. STRUT SUPPORT SHALL BE U-BOLTED TO BUILDING TUBULAR STEEL.
2. BOTTOM OF RECEPTACLES, SWITCHES OR ANY ELECTRICAL EQUIPMENT SHALL BE 18" MINIMUM ABOVE GRADE TO AVOID THE ELECTRICAL HAZARDOUS AREA PER NEC.
3. WELDING SHALL MEET AWS D1.1 STANDARDS. TUBULAR STEEL PAINT, RUST, CORROSION SHALL BE REMOVED TO CLEAN METAL BEFORE WELDING. GALVANIZING REPAIR SHALL CARBOLINE CARBO ZINC #11, GALV-WELD PRODUCTS GALV-WELD ALLOY, KOPPERS ORGANIC ZINC COATING, OR EQUAL.
4. CONDUIT TO SWITCH SHALL BE 3/4" RIGID ALUMINUM UP TO ELECTRICAL CONDUIT SEAL FITTINGS.
5. FURNISH SWITCHES AND ASSOCIATED CONDUITS TO MEET THE REQUIREMENTS OF



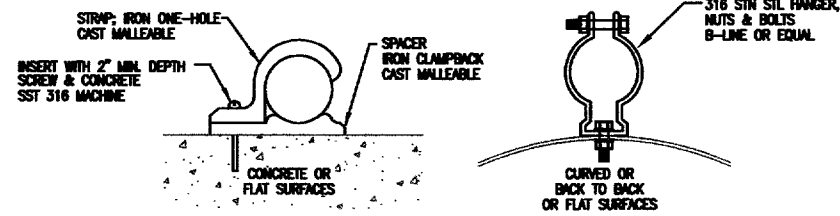
01 BULKHEAD FITTING FOR CONDUITS THROUGH GALV. CORRUGATED WALLS
 M.T.S.



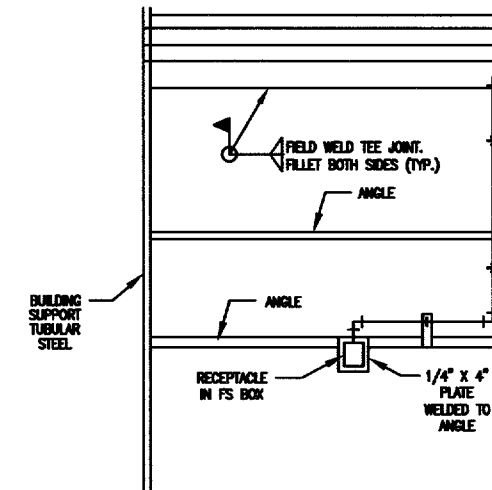
02 TYPICAL RIGHT ANGLE CONDUIT SUPPORT
 NOT TO SCALE



10 TYPICAL CONDUIT SUPPORT ON CONCRETE STRUCTURES FOR MULTIPLE CONDUIT RUNS
 NOT TO SCALE



11 TYPICAL CONDUIT SUPPORT SINGLE CONDUIT
 NOT TO SCALE



VERIFY SCALE
 Bar is one inch on original drawing.
 0 1
 If not one inch on this sheet, adjust scale accordingly.

THESE DOCUMENTS ARE FOR BIDDING, CONSTRUCTION, AND PERMIT PURPOSES.
 DATE: 1-18-05

STATE OF TEXAS
 JOSEPH J. KOTRILA
 06301
 REGISTERED PROFESSIONAL ENGINEER

TOWN OF ADDISON, TEXAS
 ADDISON AIRPORT TEE HANGAR LIGHTING
 TYPICAL HANGAR ELEVATION

McCREARY & ASSOCIATES, INC.
 CONSULTING ENGINEERS
 6300 LEW FREEMAN DRIVE 207 DALLAS, TEXAS 75249
 (214) 490-6700
 (214) 490-6700

DESIGNED BY: W.H.G. PROJECT: 97 180
 DRAWN BY: M.E.G. DATE: JANUARY, 2005

SHEET NO. E5
 OF 7 SHEETS