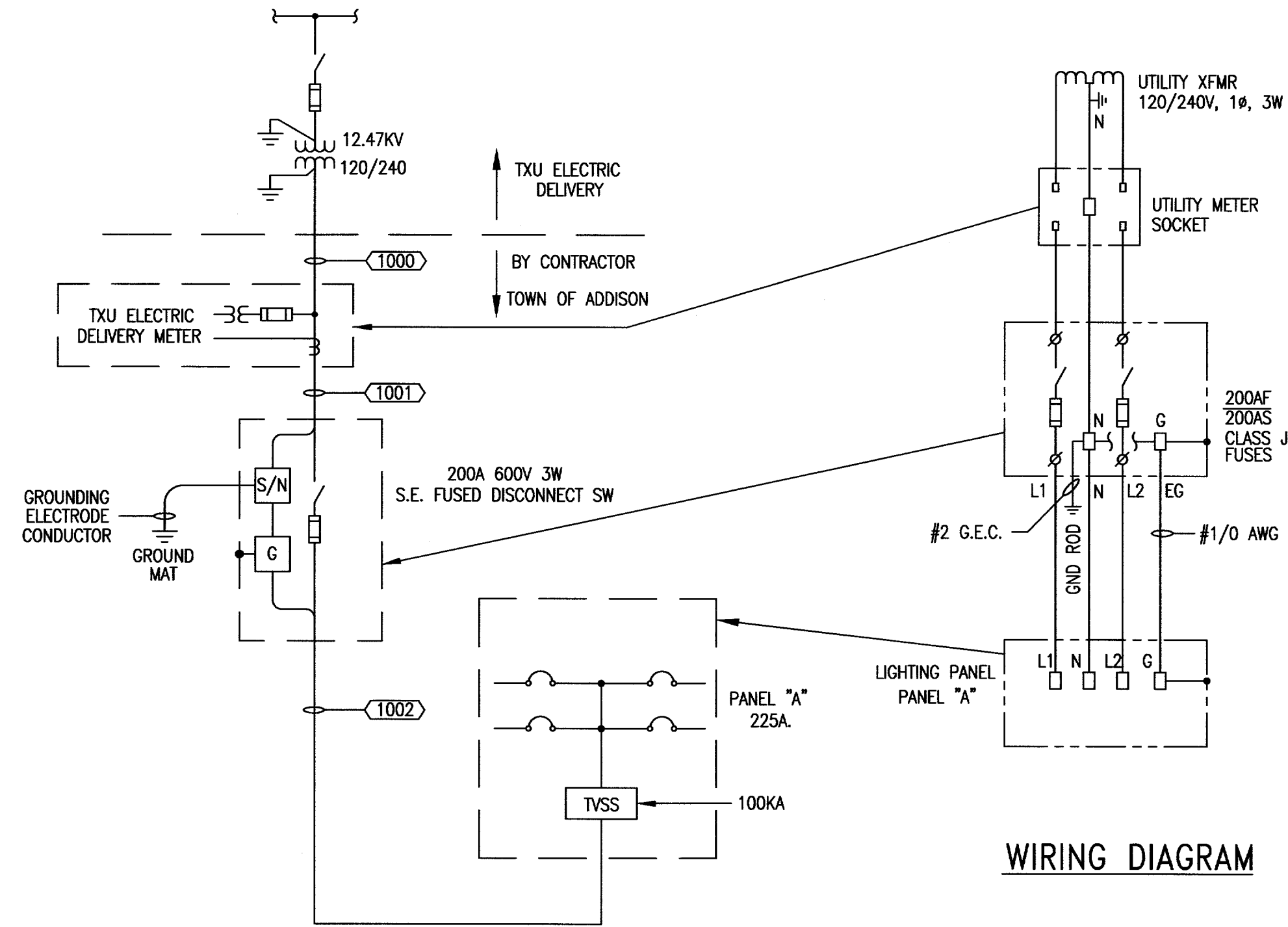


PANEL SCHEDULE									
NUMBER	A (B NOTE 1)				VOLTS	120/240V 1Ø 3WIRE			
LOCATION	MAIN ELECTRICAL ROOM				SIZE	225A.			
FED FROM	MCC-1				MAIN LUGS ONLY				
	NEMA 1 (SURFACE MOUNT)								
CIRCUIT DESCRIPTION	LOAD	BKR	CKT	CKT	CKT	LOAD	CIRCUIT DESCRIPTION	LOAD	BKR
TEE HANGAR UNIT #1 LIGHTING AND RECEPTACLE	0.89	20	1	2	20	0.89	TEE HANGAR UNIT #2 LIGHTING AND RECEPTACLE	0.89	20
TEE HANGAR UNIT #3 LIGHTING AND RECEPTACLE	0.89	20	3	4	20	0.89	TEE HANGAR UNIT #4 LIGHTING AND RECEPTACLE	0.89	20
TEE HANGAR UNIT #5 LIGHTING AND RECEPTACLE	0.89	20	5	6	20	0.89	TEE HANGAR UNIT #6 LIGHTING AND RECEPTACLE	0.89	20
TEE HANGAR UNIT #7 LIGHTING AND RECEPTACLE	0.89	20	7	8	20	0.89	TEE HANGAR UNIT #8 LIGHTING AND RECEPTACLE	0.89	20
TEE HANGAR UNIT #9 LIGHTING AND RECEPTACLE	0.89	20	9	10	20	0.89	TEE HANGAR UNIT #10 LIGHTING AND RECEPTACLE	0.89	20
TEE HANGAR UNIT #11 LIGHTING AND RECEPTACLE	0.89	20	11	12	20	0.89	TEE HANGAR UNIT #12 LIGHTING AND RECEPTACLE	0.89	20
TEE HANGAR UNIT #13 LIGHTING AND RECEPTACLE	0.89	20	13	14	20	0.89	TEE HANGAR UNIT #14 LIGHTING AND RECEPTACLE	0.89	20
TEE HANGAR UNIT #15 LIGHTING AND RECEPTACLE	0.89	20	15	16	20	0.89	TEE HANGAR UNIT #16 LIGHTING AND RECEPTACLE	0.89	20
TEE HANGAR UNIT #17 LIGHTING AND RECEPTACLE	0.89	20	17	18	20	0.89	TEE HANGAR UNIT #18 LIGHTING AND RECEPTACLE	0.89	20
TEE HANGAR UNIT #19 LIGHTING AND RECEPTACLE	0.89	20	19	20	20	0.89	TEE HANGAR UNIT #20 LIGHTING AND RECEPTACLE	0.89	20
LIGHTING - EXTERIOR ROOF MOUNTED UNITS 10, 14, 18	1.24	20	21	22	20	.62	LIGHTING - EXTERIOR ROOF MOUNTED UNITS 2 AND 6		
SPARE		20	25	26	20		SPARE		
SPARE		20	27	28	20		SPARE		
SPARE		20	29	30	20		SPARE		
TVSS									

MAIN BUS: TIN PLATED COPPER
TVSS: 120KA

NEUTRAL GROUND

NOTES:
1. PANEL SCHEDULE FOR PANEL 'B' SAME AS PANEL 'A' EXCEPT LOAD FOR CIRCUITS B21/23 IS 0.93 KVA AND FOR CIRCUITS B22/23 IS 0.62 KVA.

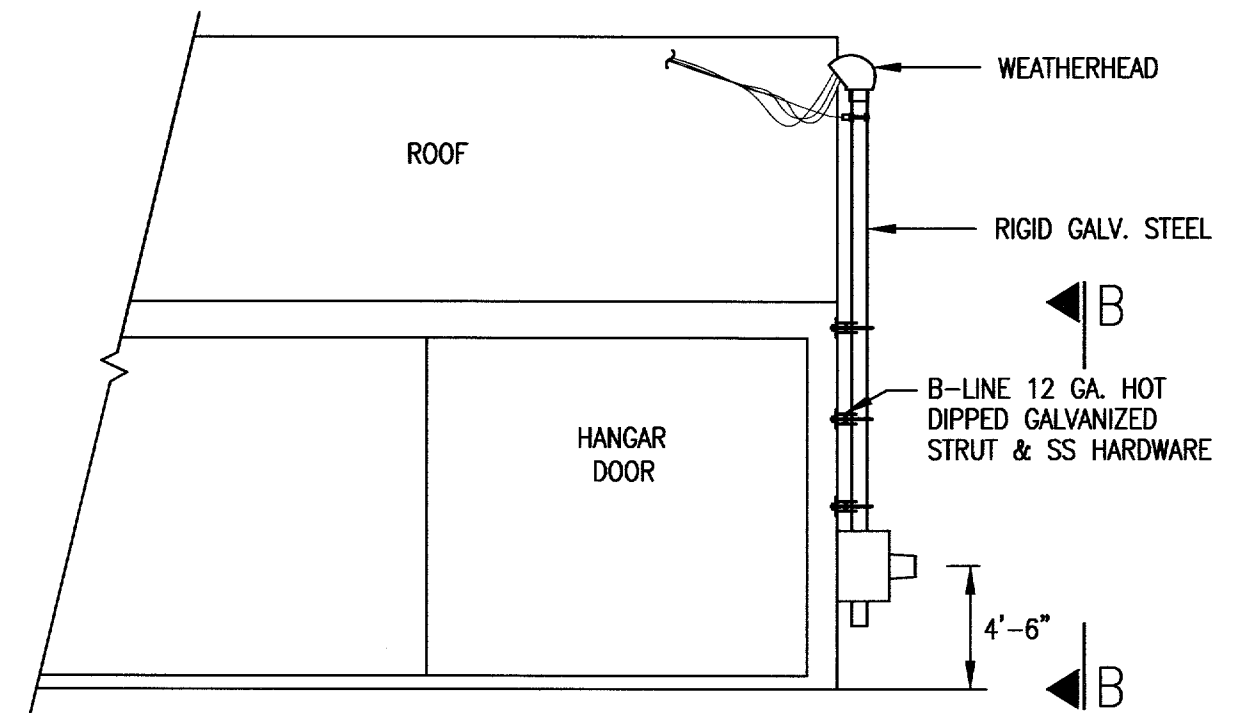


WIRING DIAGRAM

ONE LINE DIAGRAM LEGEND	
	POWER TRANSFORMER
	CIRCUIT BREAKER
	FUSED DISCONNECT SWITCH
	GROUND WIRE
	FUSED CONTROL POWER TRANSFORMER
	G = GROUND
	S/N SOLID NEUTRAL

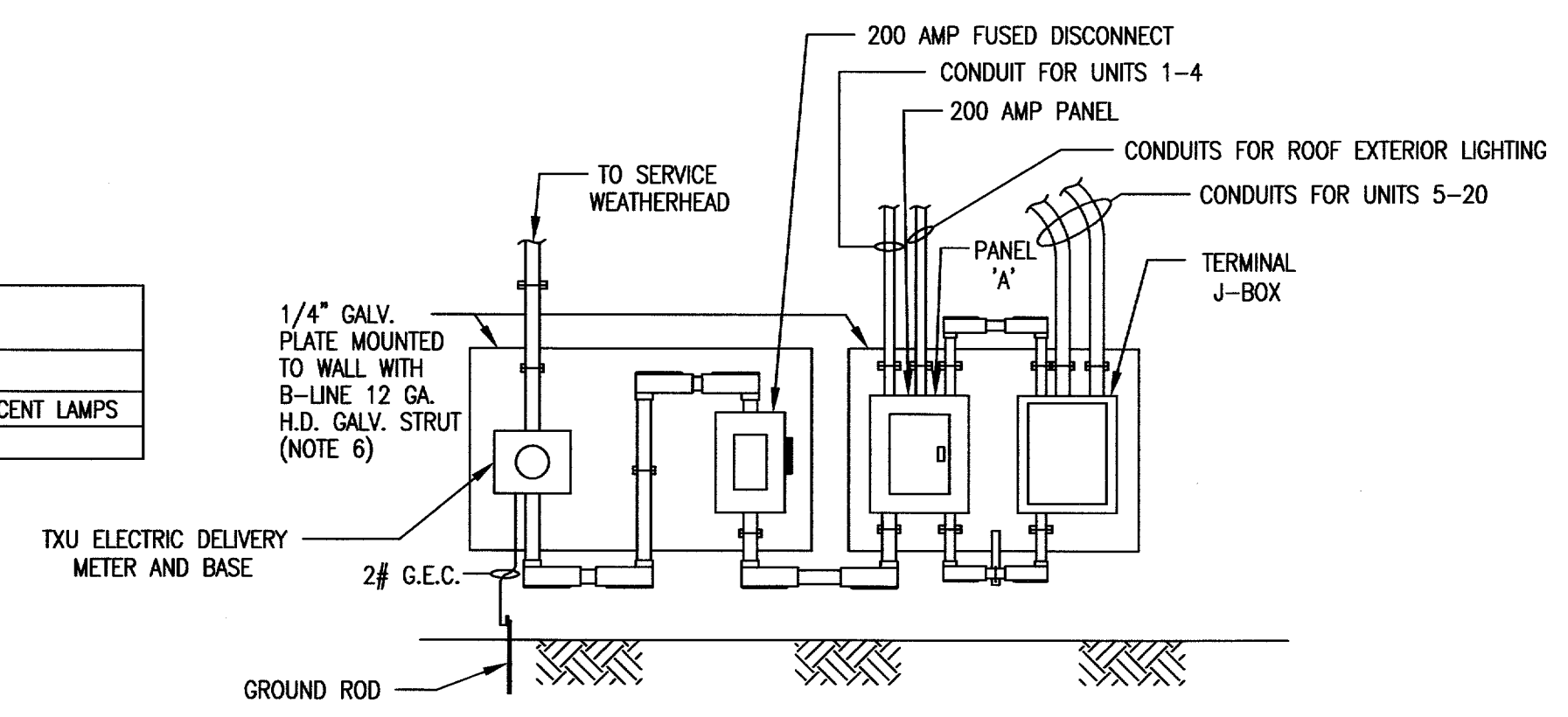
ONE LINE DIAGRAM
TYPICAL 2 SERVICES

CONDUIT AND CABLE SCHEDULE FOR 120/240 VOLT POWER WIRING					
TAG	WIRING	CONDUIT	SOURCE	DESTINATION	COMMENTS
1000	2 #4/0, #2 N	3" C	SERVICE POLE	SERVICE ENTRANCE METER	VERIFY REQUIREMENTS BY TXU ELECTRIC DELIVERY
1001	2 #4/0, #2 N, #2 GEC	2" C	SERVICE ENTRANCE METER SOCKET	SERVICE ENTRANCE SAFETY DISCONNECT SWITCH	#2 GEC TO GROUND
1002	2 #4/0, #2 N #1/0 EGC	2" C	SERVICE ENTRANCE SAFETY DISC. SWITCH	PANEL 'A'	



01 DETAIL SERVICE ENTRANCE
N.T.S.

LIGHT FIXTURE SCHEDULE							
MARK	DESCRIPTION	VOLTS	TYPE	LAMPS	MANUFACTURER	CATALOG NUMBER	COMMENTS
A	HANGAR INTERIOR LTC.	120	FLUORESCENT	800ma	LITHONIA	DMS296T12HO240	FURNISH AND INSTALL 96", T-12 RS 800ma HO FLUORESCENT LAMPS
B	EXTERIOR ROADWAY LIGHTING	240	METAL HALIDE	250 WATT	HOLOPHANE	G250MH00LWF	FURNISH AND INSTALL MH LAMPS. PROVIDE PHOTOCELLS

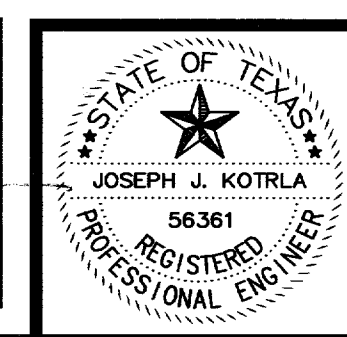


SECTION B-B
N.T.S. (NOTE 5)

- NOTES:
- METER BASE WILL BE FURNISHED BY CONTRACTOR AND SHALL BE INSTALLED PER TXU ELECTRIC DELIVERY BY THE CONTRACTOR 4' TO 6' ABOVE GRADE INSTALL PER SPECIFICATIONS.
 - CONTRACTOR SHALL BE RESPONSIBLE FOR CONDUIT TO WEATHERHEAD FOR CONNECTION TO TXU ELECTRIC DELIVERY.
 - REF ELECTRICAL PLAN VIEW FOR EXACT LOCATION OF DISCONNECT. REF SITE PLAN FOR LOCATION OF SERVICE.
 - INSTALL NO. 2 AWG CU GROUND TO 3/4" X 10' CU CLAD DRIVEN GROUND ROD. REF DETAIL 04/E1.
 - INSTALL MIRROR IMAGE FOR 2ND HANGAR BUILDING.
 - SUPPORT STRUT SHALL BE ANCHORED TO BUILDING SUPPORT STEEL.

VERIFY SCALE
Bar is one inch on original drawing.
0 1
If not one inch on this sheet, adjust scale accordingly.

THESE DOCUMENTS ARE FOR BIDDING, CONSTRUCTION, AND PERMIT PURPOSES.
DATE: 1-14-05



TOWN OF ADDISON, TEXAS

ADDISON AIRPORT TEE HANGAR LIGHTING ELECTRICAL ONE LINE

McCREARY & ASSOCIATES, INC.
CONSULTING ENGINEERS
6310 LEW FERRYWAY, SUITE 217 DALLAS, TEXAS 75240
972/488-8746

DESIGNED BY: W.H.G.	PROJECT: 97 180	SHEET NO. E2
DRAWN BY: M.E.G.	DATE: JANUARY, 2005	OF E7 SHEETS