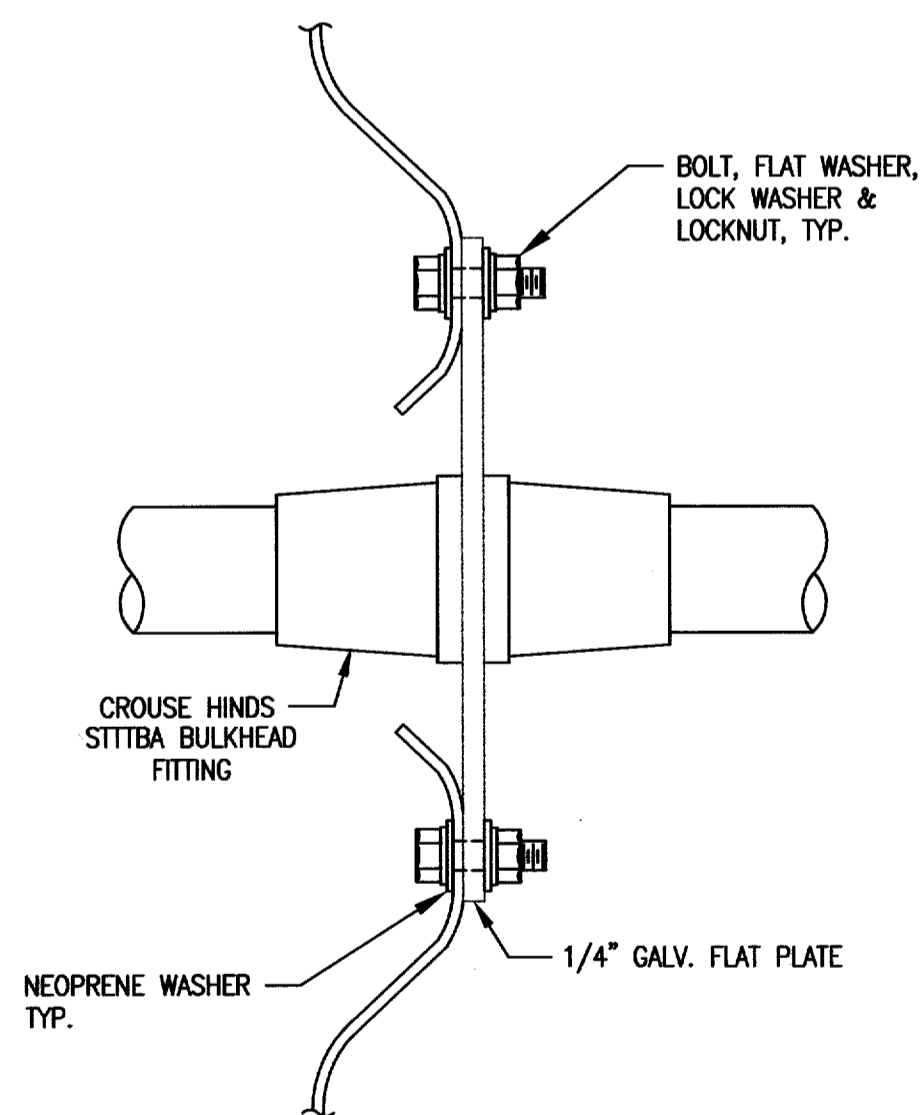


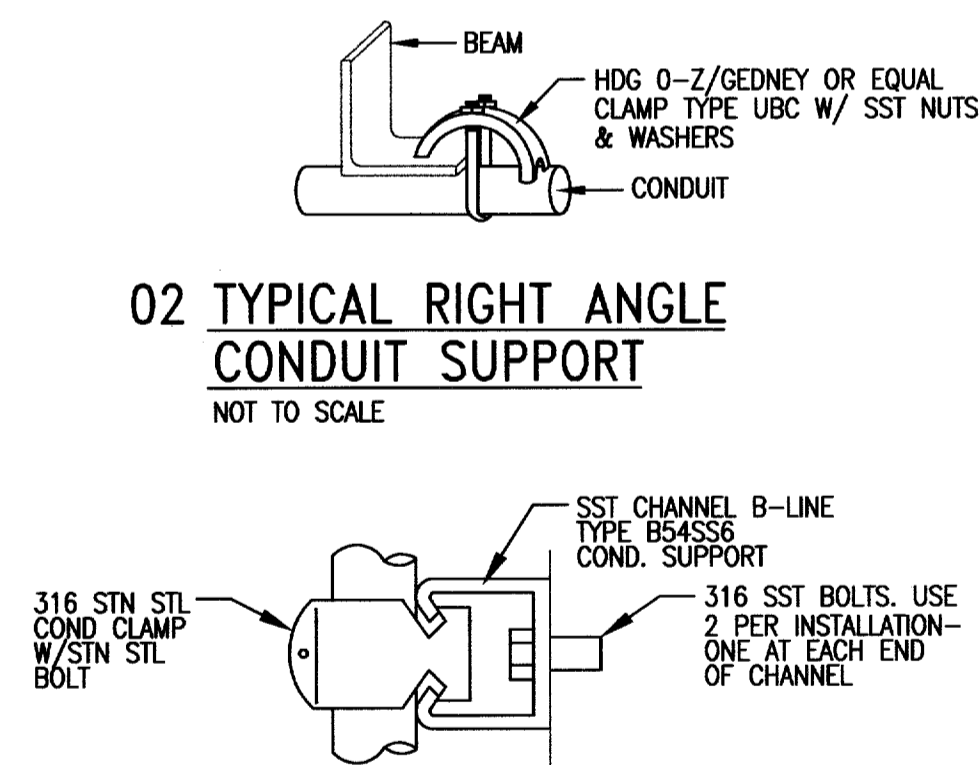
AIRPORT TEE HANGAR LIGHTING ELEVATION A-A
 TYPICAL CONDUIT LAYOUT
 SCALE: 3/8" = 1'-0"

NOTES:

1. B-LINE 12GA. H.D. GALV. STRUT SUPPORT SHALL BE U-BOLTED TO BUILDING TUBULAR STEEL.
2. BOTTOM OF RECEPTACLES, SWITCHES OR ANY ELECTRICAL EQUIPMENT SHALL BE 18" MINIMUM ABOVE GRADE TO AVOID THE ELECTRICAL HAZARDOUS AREA PER NEC.
3. WELDING SHALL MEET AWS D1.1 STANDARDS. TUBULAR STEEL PAINT, RUST, CORROSION SHALL BE GROUND TO CLEAN METAL BEFORE WELDING. GALVANIZING REPAIR SHALL CARBOLINE CARBO ZINC #11, GALV-WELD PRODUCTS GALV-WELD ALLOY, KOPPERS ORGANIC ZINC COATING, OR EQUAL.
4. CONDUIT TO SWITCH SHALL BE 3/4" RIGID ALUMINUM UP TO ELECTRICAL CONDUIT SEAL.
5. FURNISH SWITCHES AND ASSOCIATED CONDUITS TO MEET THE REQUIREMENTS OF

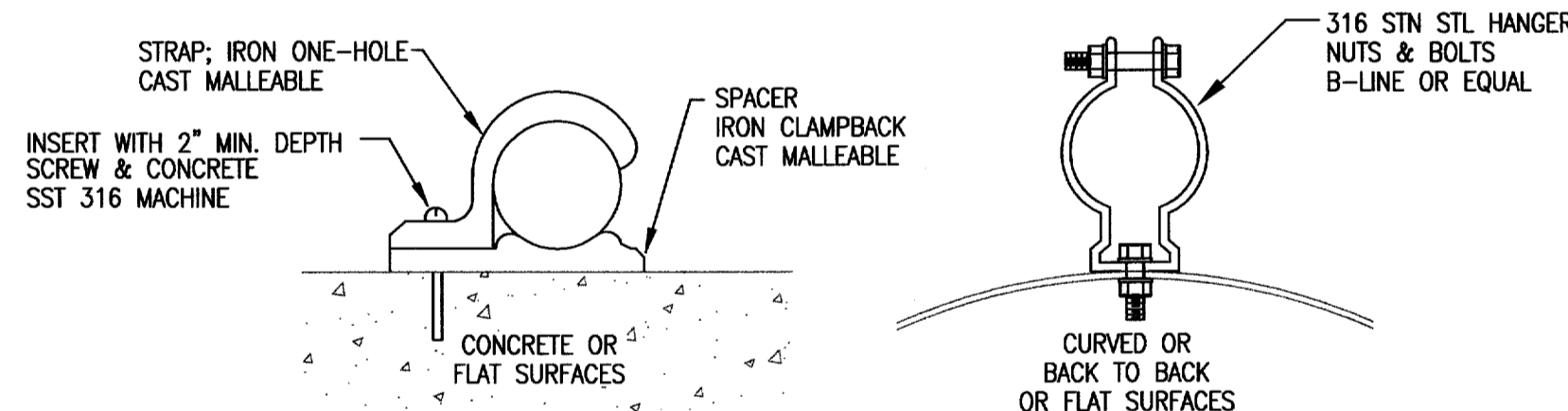


01 BULKHEAD FITTING FOR CONDUITS THROUGH GALV. CORRUGATED WALLS
 N.T.S.

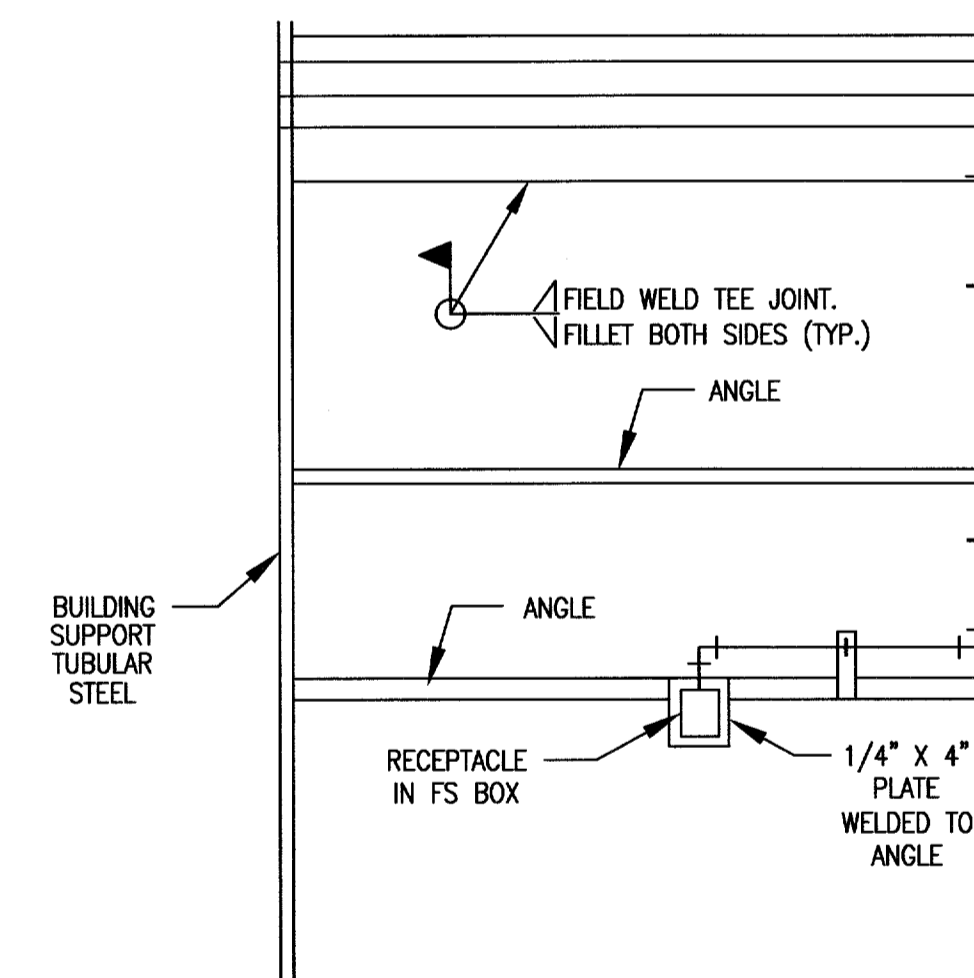


02 TYPICAL RIGHT ANGLE CONDUIT SUPPORT
 NOT TO SCALE

10 TYPICAL CONDUIT SUPPORT ON CONCRETE STRUCTURES FOR MULTIPLE CONDUIT RUNS
 NOT TO SCALE

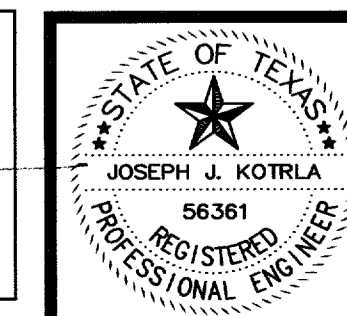


11 TYPICAL CONDUIT SUPPORT SINGLE CONDUIT
 NOT TO SCALE



VERIFY SCALE
 Bar is one inch on original drawing.
 0 1
 If not one inch on this sheet, adjust scale accordingly.

THESE DOCUMENTS ARE FOR BIDDING, CONSTRUCTION, AND PERMIT PURPOSES.
 DATE: 1-14-05



TOWN OF ADDISON, TEXAS

ADDISON AIRPORT TEE HANGAR LIGHTING
 TYPICAL HANGAR ELEVATION

McCREARY & ASSOCIATES, INC.
 CONSULTING ENGINEERS 872/458-8745
 6310 LBJ FREEWAY SUITE 217 DALLAS, TEXAS 75240

DESIGNED BY: W.H.G.	PROJECT: 97 180	SHEET NO. E5
DRAWN BY: M.E.G.	DATE: JANUARY, 2005	OF 07 SHEETS