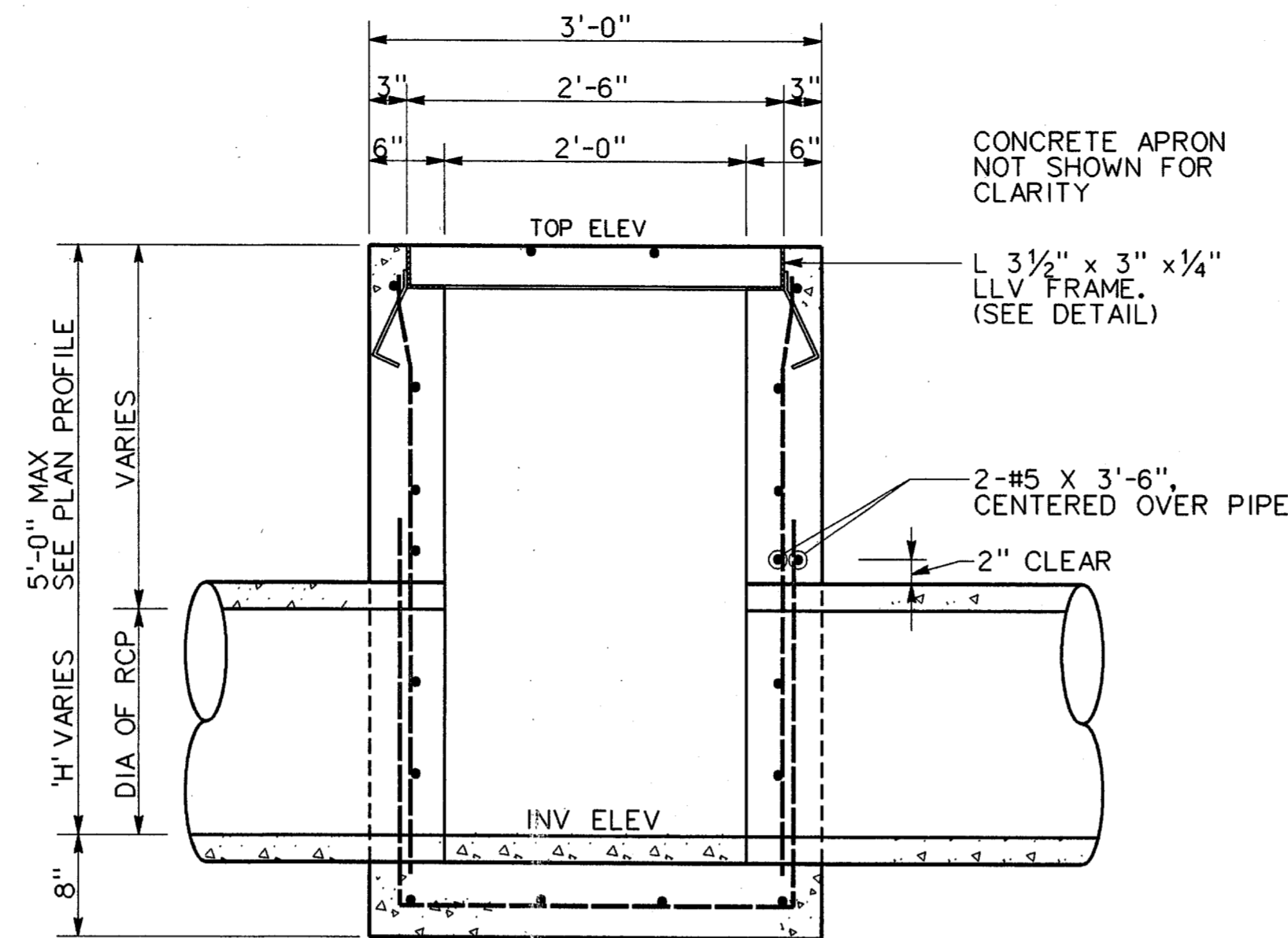
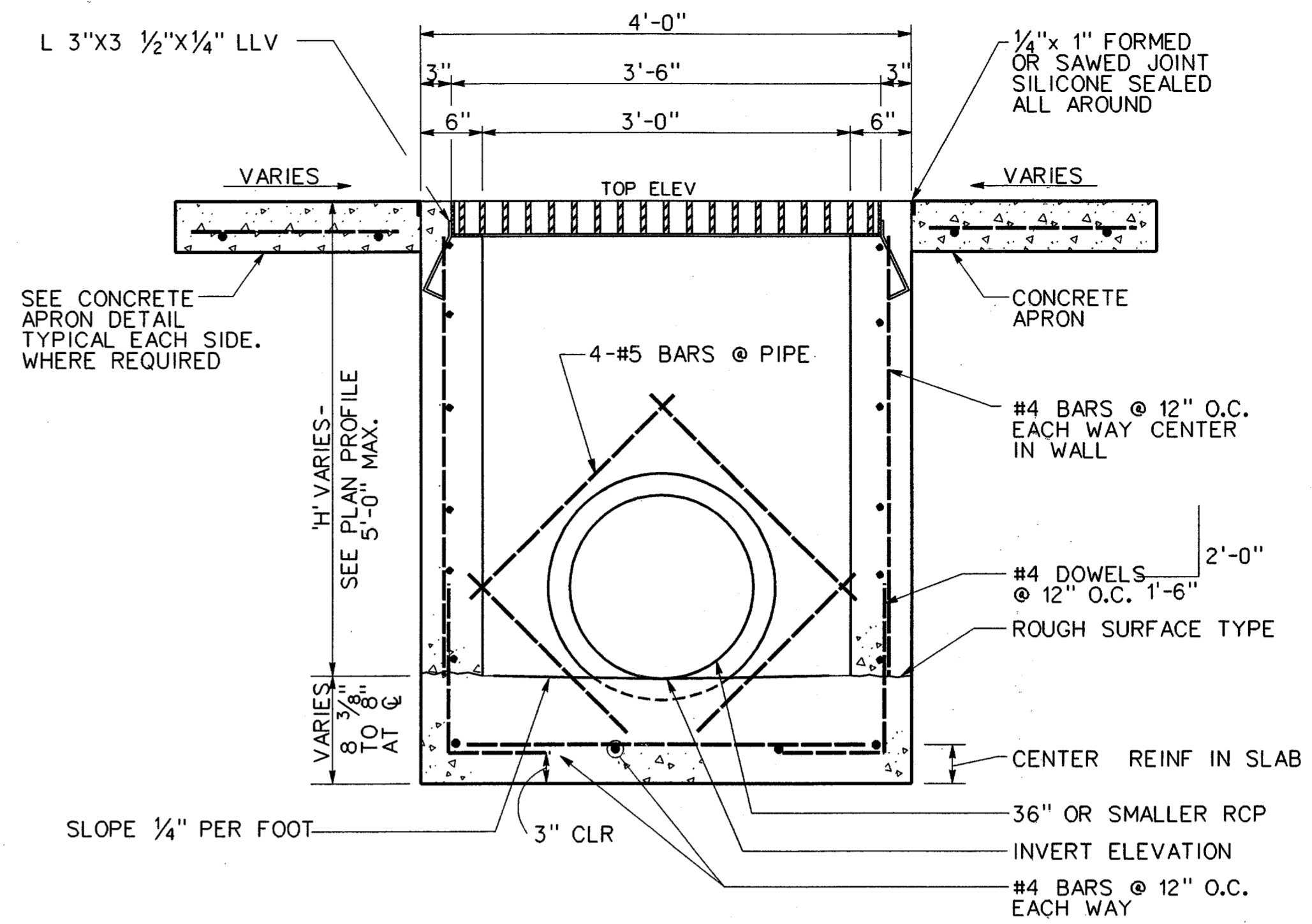


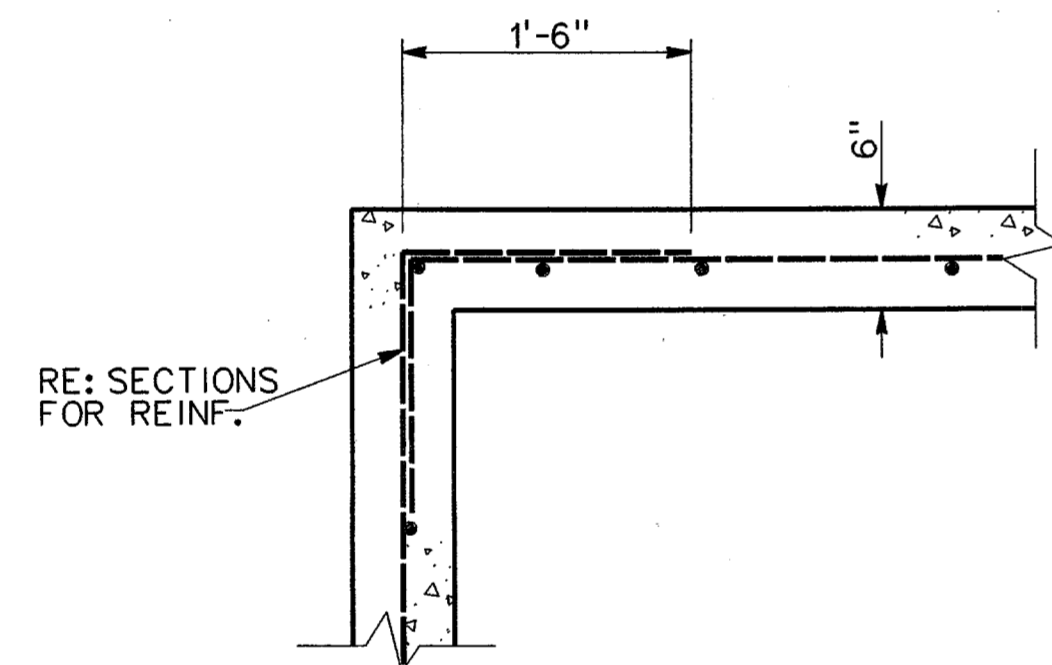
TYPE 'A' INLET PLAN VIEW  
NOT TO SCALE



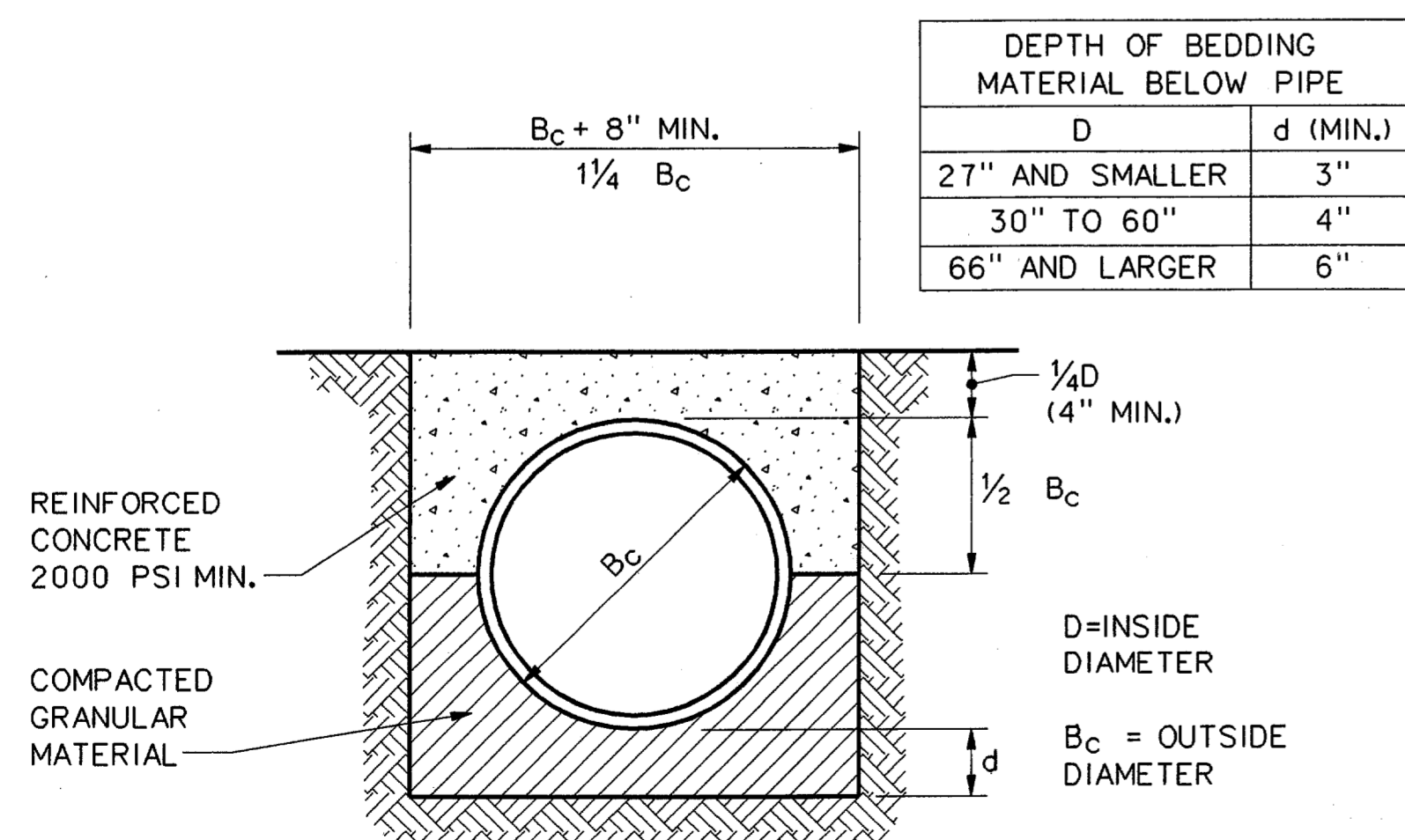
SECTION TYPE 'A' INLET  
NOT TO SCALE



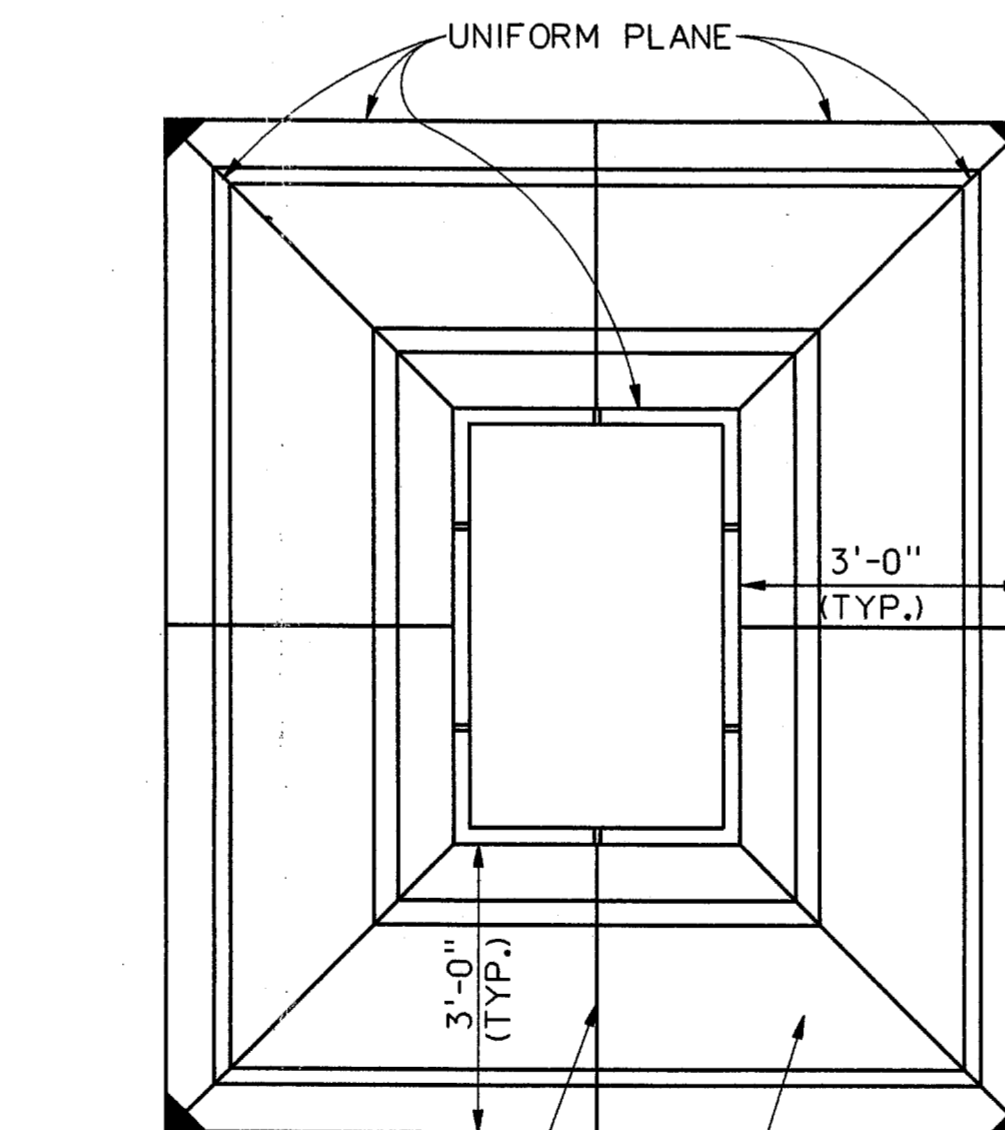
SECTION TYPE 'A' INLET  
NOT TO SCALE



CONCRETE REINFORCEMENT DETAIL IN WALLS  
NOT TO SCALE



CONCRETE ARCH TRENCH BEDDING DETAIL  
NOT TO SCALE



TYPICAL CONCRETE APRON DETAIL FOR TYPE 'A' INLETS  
NOT TO SCALE

GENERAL NOTES

1. CONCRETE SHALL HAVE A MINIMUM COMPRESSIVE STRENGTH OF 4000 POUNDS PER SQUARE INCH AT 28 DAYS. DESIGN MIX FOR 4,000 POUND CONCRETE SHALL CONTAIN A MINIMUM OF 500 POUNDS OF CEMENTIOUS MATERIAL PER CUBIC YARD AND SHALL CONFORM TO THE REQUIREMENTS OF ITEM P-610 OF THE SPECIFICATIONS.
2. REINFORCING STEEL SHALL CONFORM TO ASTM DESIGNATION A-615, GRADE 60.
3. REINFORCING BARS SHALL BE SUPPORTED, SPACED AND ACCURATELY SECURED IN PLACE BY BOLSTERS, SPACERS OR CHAIRS IN ACCORDANCE WITH ITEM P-610 OF THE SPECIFICATIONS, AND IN ACCORDANCE WITH ACI "MANUAL OF STANDARD PRACTICE FOR DETAILING REINFORCED CONCRETE STRUCTURES".
4. ALL REINFORCING STEEL SHALL BE LAPPED A MINIMUM OF 36 BAR DIAMETERS AT ALL CORNERS AND AT ALL SPLICE POINTS UNLESS OTHERWISE NOTED ON THE PLANS.
5. ALL REINFORCING STEEL SHALL BE CUT AND BENT AS REQUIRED TO CLEAR PIPES.
6. ALL INLETS OVER A DEPTH OF 5 FEET SHALL BE FURNISHED WITH MANHOLE STEPS, STEPS SHALL CONFORM TO DETAILS SHOWN ON THE PLANS AND TO THE SPECIFICATIONS.
7. CONSTRUCTION JOINTS WILL BE PERMITTED AS SHOWN ON THE PLANS.
8. CONSTRUCTION JOINTS SHOWN AT THE BASE OF STRUCTURES MAY BE RAISED A MAXIMUM OF 6" AT THE OPTION OF THE CONTRACTOR. IF THE CONSTRUCTION JOINT IS RAISED THE LENGTH OF VERTICAL STEEL MUST BE ADJUSTED ACCORDINGLY.
9. PIPE LINES WILL ENTER GRATE INLETS AT LOCATIONS INDICATED ON THE PLANS.
10. CHAMFER ALL EXPOSED CONCRETE CORNERS 3/4".
11. ALL MATERIALS FOR GRATING SHALL BE HOT DIP GALVANIZED AFTER FABRICATION.
12. PRE-MANUFACTURE INLETS WITH H-20 LOADING MAY BE BROOKS 24-24-CB, UTILITY PRECAST CB2424 OR APPROVED EQUAL.



NO.	DATE	REVISION	APPROV.
<b>HNTB</b> ARCHITECTS ENGINEERS PLANNERS The HNTB Companies			
<b>TOWN OF ADDISON</b>			
ADDISON AIRPORT PAVEMENT RECONSTRUCTION OF APRON 'A' AND HANGARS 'A', 'B' AND 'C'			
TYPE 'A' INLET DETAILS			
<b>TOWN OF ADDISON, TEXAS</b>			
Design JSN	Drawn GFS	DATE	PROJECT NO.
Check JDH	Check JSN	MAY 2003	37365
SHEET			<b>28</b>

13-MAY-2003 14:54 G:\37365\Cad\Sheets\oadr03.dgn