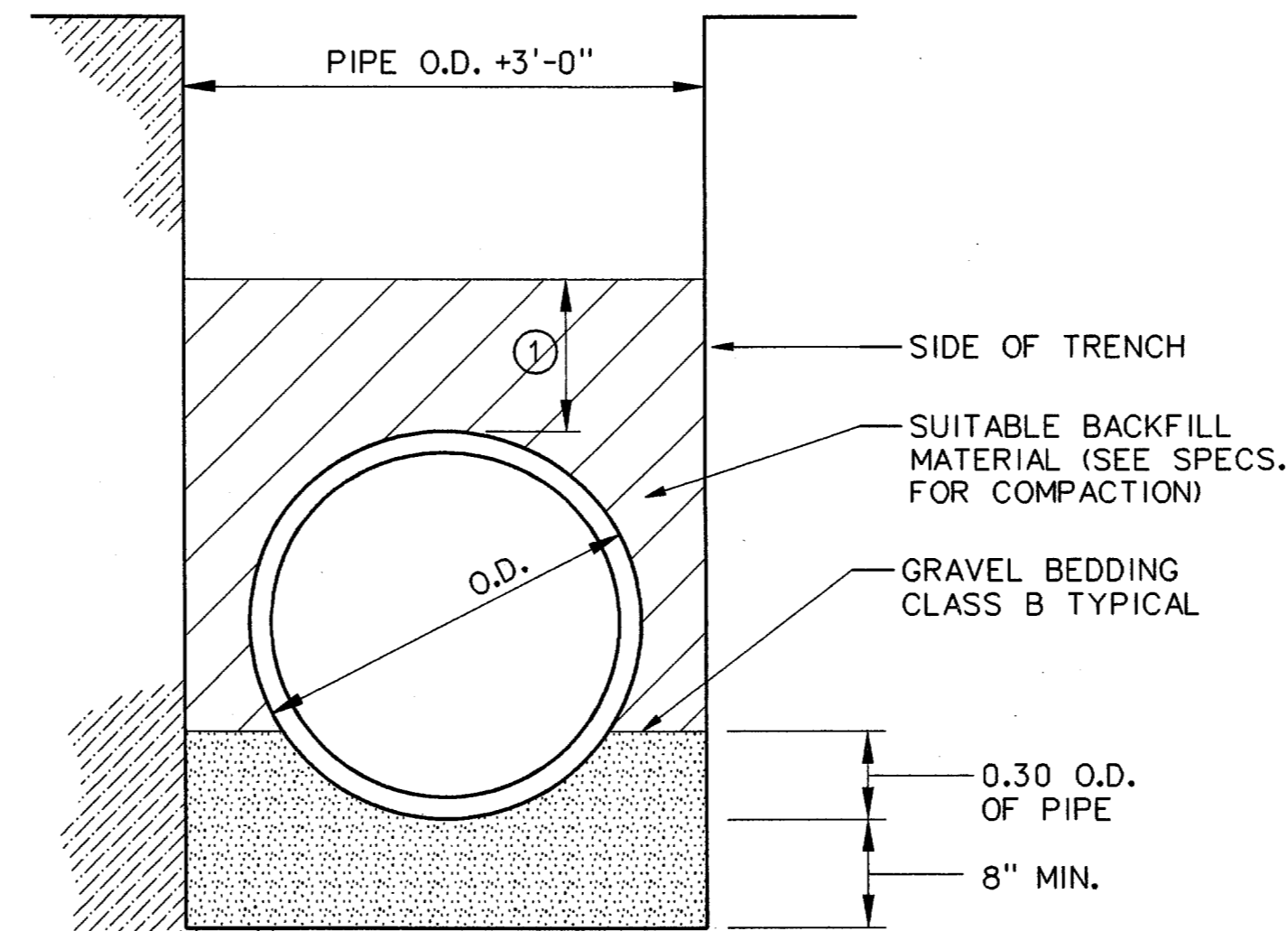


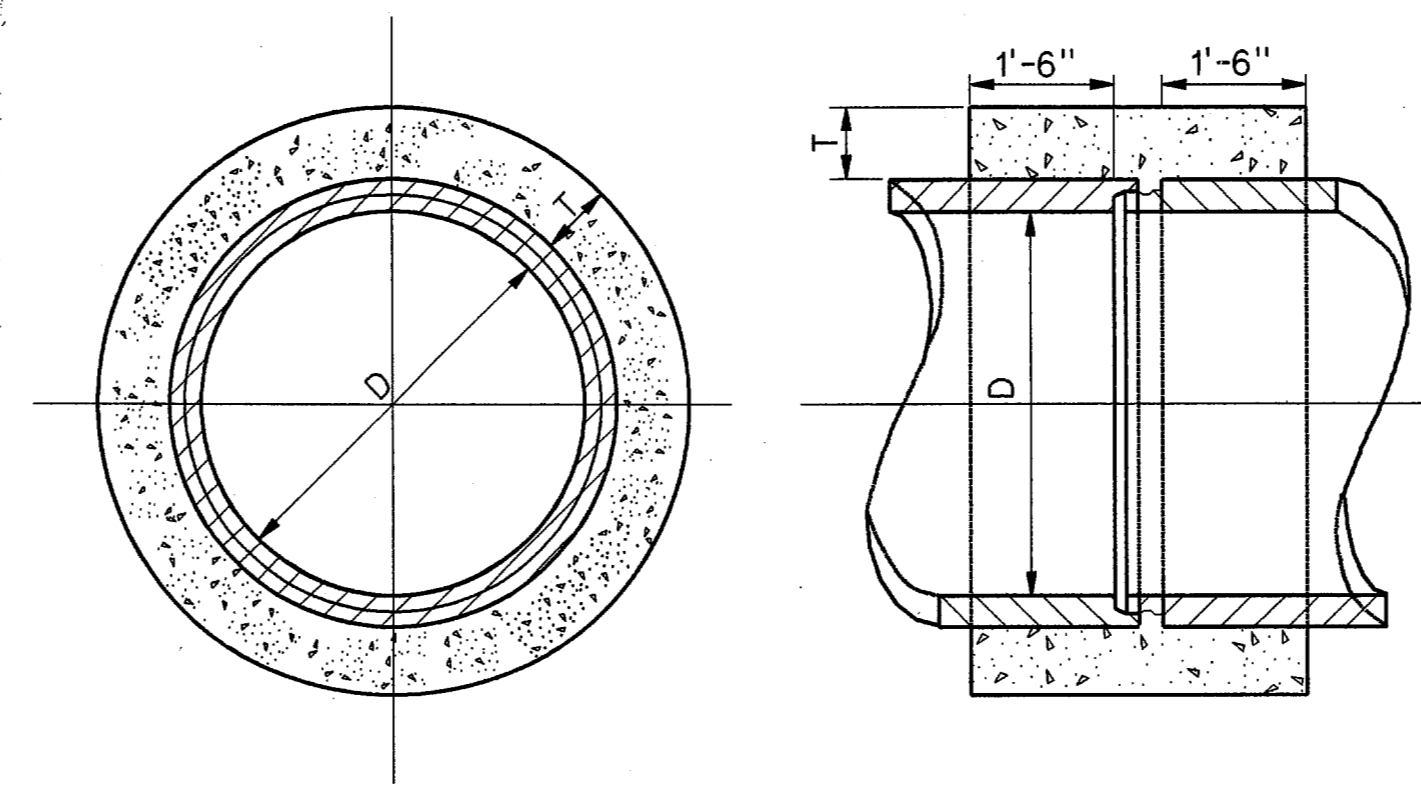
NOTES:

1. BALES SHALL BE PLACED IN A ROW WITH ENDS TIGHTLY ABUTTING. THE ADJACENT BALES. FILL THE VOIDS BETWEEN BALES WITH SURPLUS STRAW. PLACE BALES WITH BINDING PARALLEL TO GROUND SURFACE.
2. EACH BALE SHALL BE ENBEDDED IN SOIL A MINIMUM OF 4 INCHES.
3. BALES SHALL BE SECURELY ANCHORED IN PLACE BY WOOD STAKES DRIVEN THROUGH THE BALES. THE FIRST STAKE IN EACH BALE SHALL BE ANGLED TOWARDS THE PREVIOUS BALE TO FORCE THE BALES TOGETHER.
4. BALES SHALL BE BOUND BY EITHER WIRE OR NYLON ROPE TIED ACROSS THE HAY BALES.
5. MAINTENANCE OR REPLACEMENT OF BALES SHALL BE PERFORMED BY THE CONTRACTOR AS DIRECTED BY THE ENGINEER.
6. HYDROSEEDING SHALL BE APPLIED WITHIN 5 CALENDAR DAYS AFTER FINAL GRADING OF THE PARTICULAR PHASE OF CONSTRUCTION.
7. TEMPORARY PROTECTION OF EXPOSED STOCKPILES OF SOIL SHALL BE PROVIDED AS SOON AS POSSIBLE BY COVERING WITH PROTECTIVE LINERS.
8. WHEN PERMANENT SEEDING IS SPECIFIED FOR THE SAME AREAS CALLED OUT TO BE SEEDED FOR SILTATION AND EROSION CONTROL PURPOSES, ALL ITEMS RELATED TO SUCH PERMANENT SEEDING WILL REMAIN AS PAY ITEMS OF THE CONSTRUCTION PLANS BUT WILL BE INSTALLED ONLY AS NEEDED (AS DETERMINED BY THE ENGINEER).



① MEET THE REQUIREMENTS SET BY THE CONTRACTOR'S GEOTECHNICAL ENGINEER FOR TRENCH SAFETY.

STORM SEWER TRENCH BEDDING DETAIL
NOT TO SCALE



PIPE COLLAR DETAIL
NOT TO SCALE

D IN	T IN	As *
15	6	21"
18	6	24"
24	6	30"
30	6	42"
36	6	48"
42	6	54"
48	9	60"
54	9	66"
60	9	72"
66	9	78"
72	12	84"
78	12	90"
84	12	96"
96	12	108"

* STEEL CAGE REQUIRED FOR COLLAR IS EQUIVALENT TO CAGE USED IN PIPE SIZE AS SHOWN IN COLUMN As AND FOR SAME CLASS OF PIPE USED.



NO.	DATE	REVISION	APPROV.

HNTB ARCHITECTS ENGINEERS PLANNERS
The HNTB Companies

TOWN OF ADDISON

ADDISON AIRPORT PAVEMENT RECONSTRUCTION
OF APRON 'A' AND HANGARS 'A', 'B' AND 'C'

DRAINAGE DETAILS

TOWN OF ADDISON, TEXAS

Design	Drawn	DATE	PROJECT NO.	SHEET
JSN	GFS	MAY 2003	37365	29
Check	JDH	Check JSN		