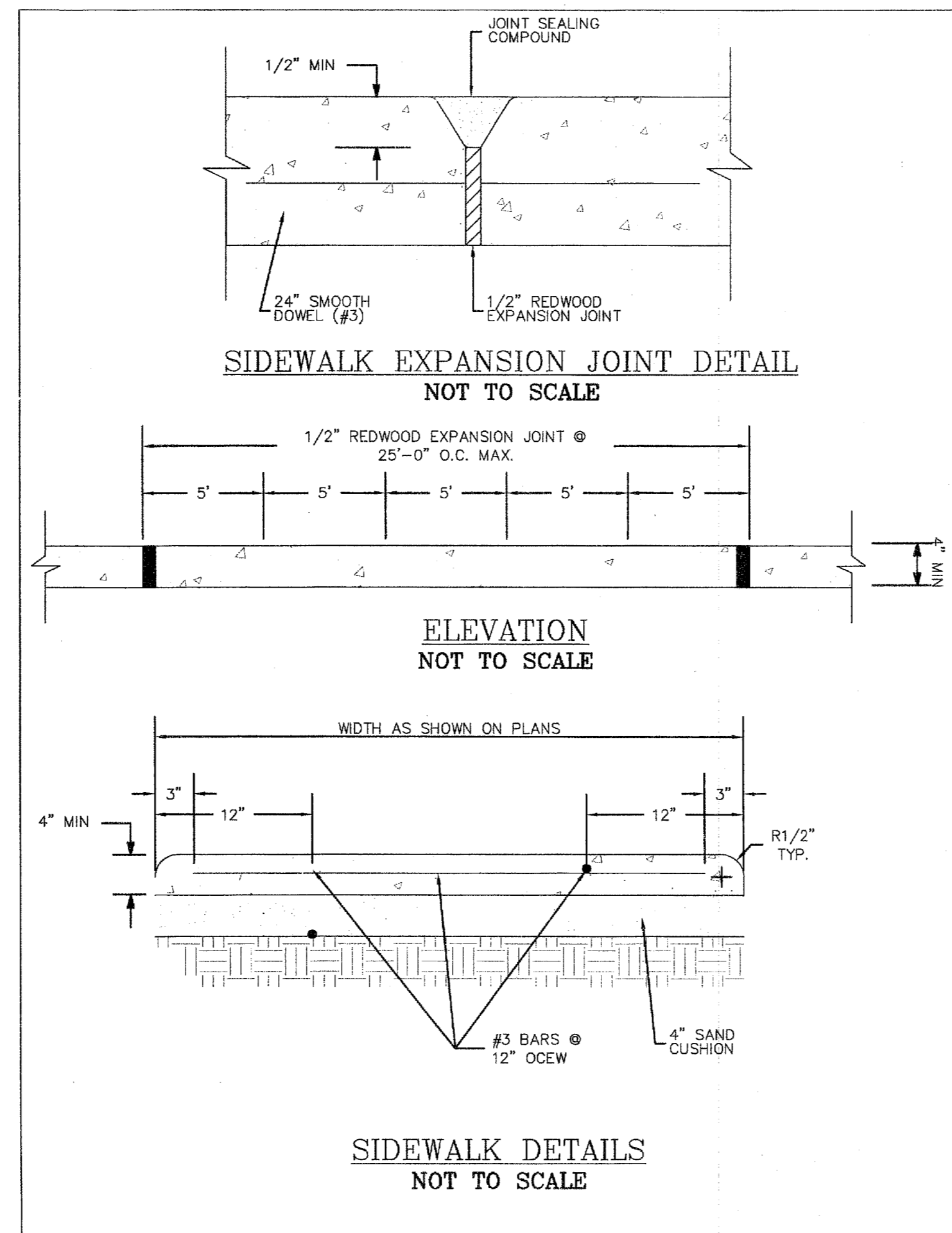
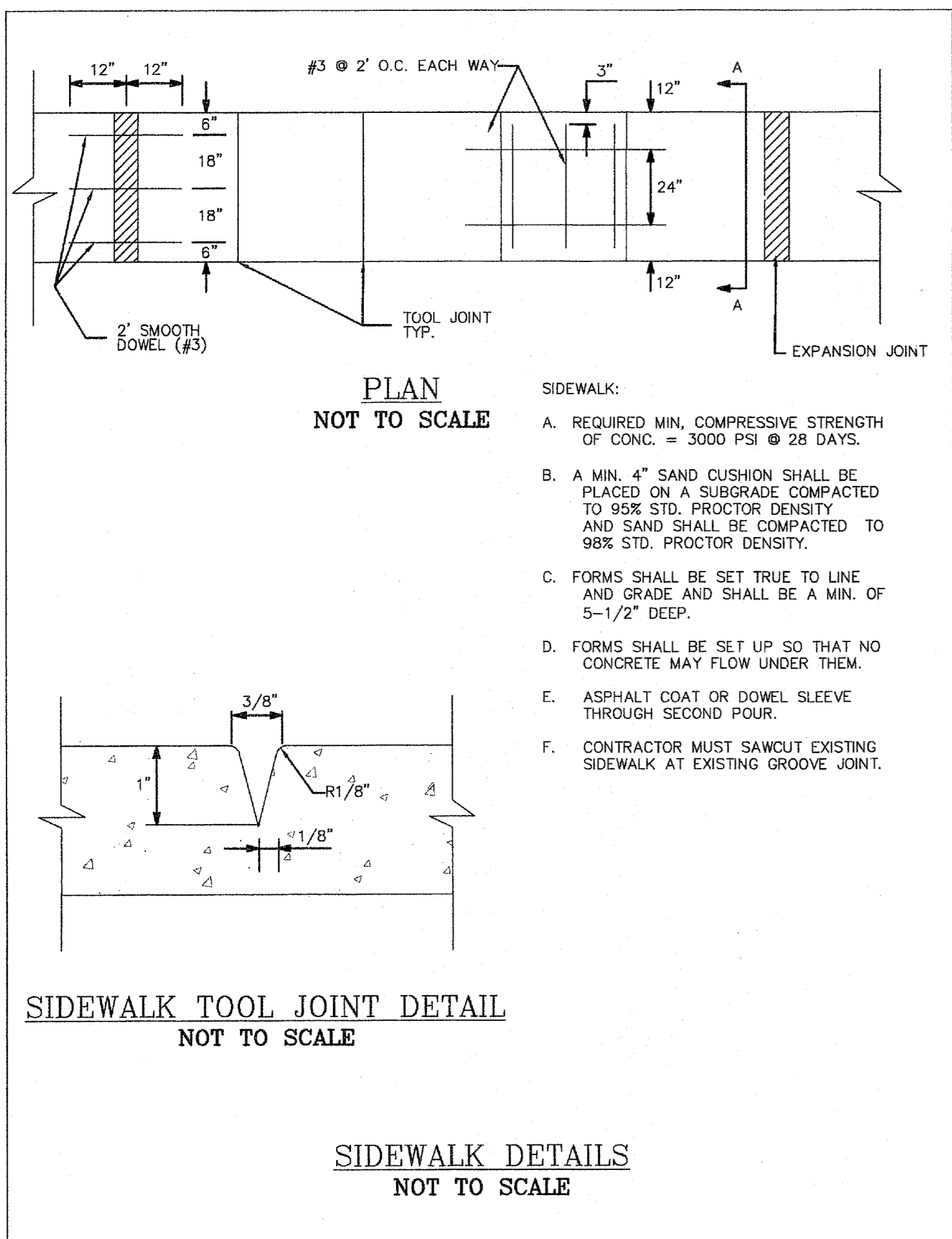


- GENERAL NOTES**
- GENERAL NOTES:
- ALL PARKING SPACE LIMIT LINES SHALL BE 4" SOLID WHITE LINES.
  - AISE MARKINGS SHOWN ARE EXAMPLES ONLY. OTHER METHODS TO INDICATE A NO PARKING AREA ARE ACCEPTABLE. AISE MARKINGS SHALL BE WHITE.
  - DIMENSIONS OF LIMIT LINES, AISE MARKINGS, AND SYMBOL (WITH OR WITHOUT BACKGROUND) MAY VARY + 10%.
  - PAVEMENT MARKING SYMBOLS (WITH BACKGROUND):
    - ARE REQUIRED UNLESS STATED ELSEWHERE IN THE PLANS.
    - SHOULD BE PLACED TOWARD THE FAR END OF THE PARKING SPACES SO AS TO BE VISIBLE TO MOTORISTS IN THE TRAVEL LANE.
    - MAY BE PAINTED OR PREFABRICATED MATERIAL, AND
    - SHALL BE 30" X 30" MINIMUM.
  - WITH APPROVAL OF THE ENGINEER, PREFABRICATED PAVEMENT MARKING SYMBOLS WITH BACKGROUND OF OTHER DIMENSIONS EXCEEDING THE 30" X 30" MINIMUM MAY BE USED. ALTERNATIVE DESIGNS SHALL INCLUDE A PROPORTION SIZED SYMBOL OF ACCESSIBILITY, AND SHALL CONFORM TO THE ILLUSTRATED COLORS FOR BACKGROUND, SYMBOL AND BORDER.
  - AN R7-8 SIGN:
    - SHALL BE REQUIRED FOR EACH ACCESSIBLE PARKING SPACE.
    - SHALL NOT BE PLACED BETWEEN TWO ACCESSIBLE PARKING SPACES.
    - SHALL NOT BE PLACED IN A LOCATION THAT RESTRICTS MOVEMENT OF WHEELCHAIRS WITHIN THE ADJACENT SIDEWALK, AND
    - SHALL HAVE A MINIMUM MOUNTING HEIGHT OF 7 FEET. IF MOUNTED TO WALL OR LOCATED SO AS NOT TO BE NEAR PEDESTRIAN TRAFFIC MINIMUM MOUNTING HEIGHT MAY BE 7 FEET.
  - POST MOUNTED SIGNS SHOULD BE PLACED APPROXIMATELY 1 FOOT (OR GREATER) BEHIND THE CURB TO PREVENT DAMAGE FROM VEHICLE OVERHANG.
  - SIGNS MAY BE MOUNTED DIRECTLY TO AN ADJACENT WALL OF A BUILDING WHEN POST MOUNTING IS IMPRACTICAL.



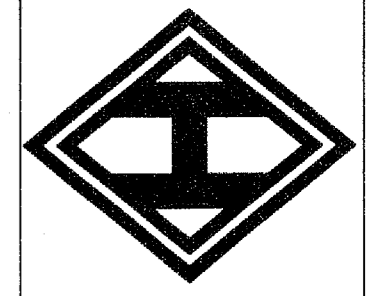
CONTACT CLAY BARNETT, P.E. WITH THE TOWN OF ADDISON FOR A COPY OF THE CONSTRUCTION DETAILS BELOW. (972-450-2857) CBARNETT@ADDISONTX.GOV

TOWN OF ADDISON CONSTRUCTION DETAILS:

- REINFORCED CONCRETE PAVEMENT JOINTS DETAIL.
- CONCRETE CURB & GUTTER DETAIL.
- FIRE HYDRANT INSTALLATION DETAIL.
- TYPICAL PIPE INSTALLATION AND EMBEDMENT DETAIL.

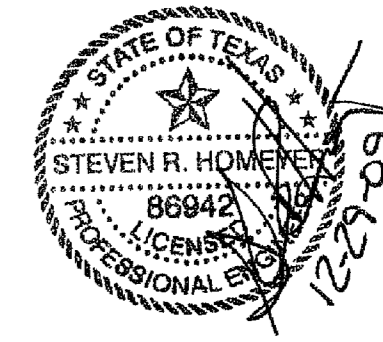
**HOMEYER ENGINEERING, INC.**  
ENGINEERING, PLANNING  
CIVIL ENGINEERING, PLANNING  
SITE & LAND PLANNING

P.O. BOX 294527 • LEWISVILLE, TEXAS 75039  
972-906-9985 PHONE • 972-906-9987 FAX  
WWW.HOMEYER-ENGINEERING.COM



TURBINE AIR EXPANSION  
ADDISON AIRPORT, BLDG. A-5  
2.404 ACRES, ZONED I-3  
4550 JIMMY DOOLITTLE DRIVE  
TOWN OF ADDISON  
DALLAS COUNTY, TEXAS

DETAILS



DRAWN: HEI  
DATE: 12/18/08  
HEI #: 08-152  
SHEET NO: 67