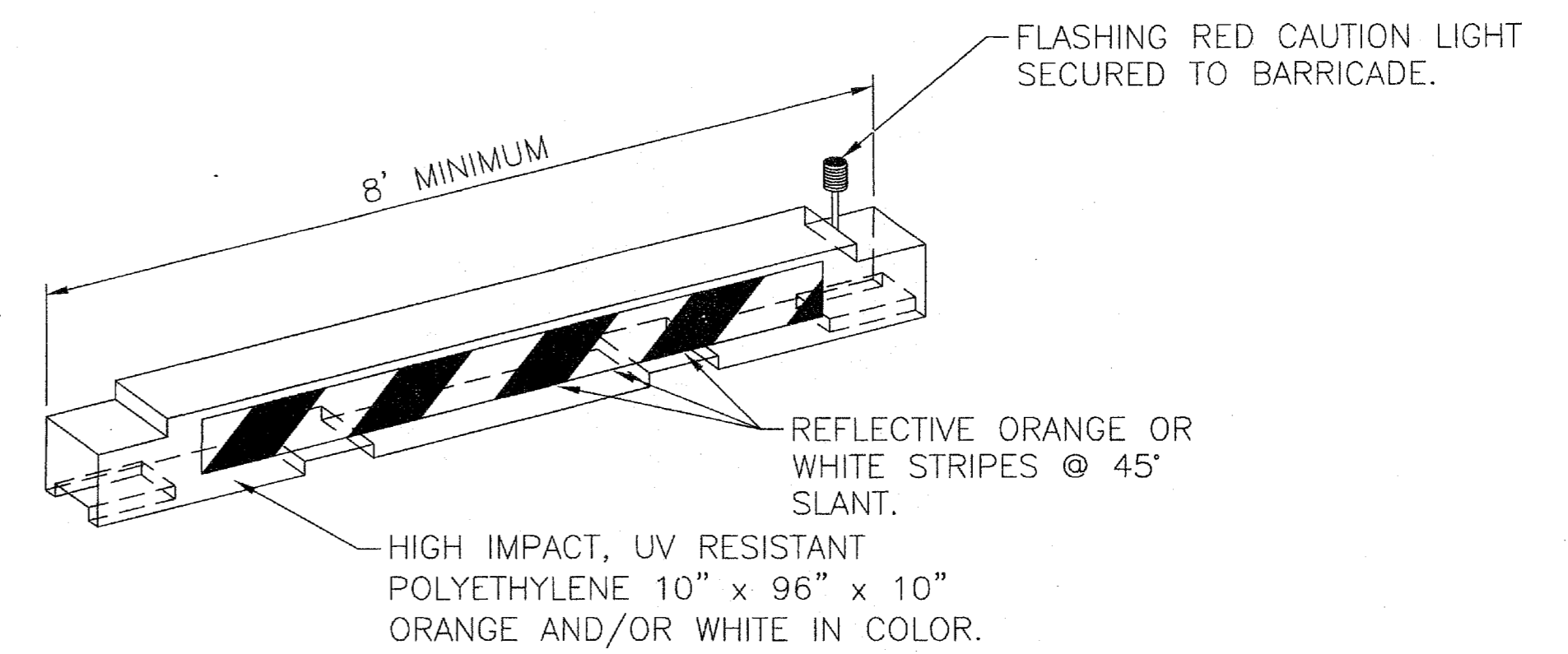


GRATE DETAILS

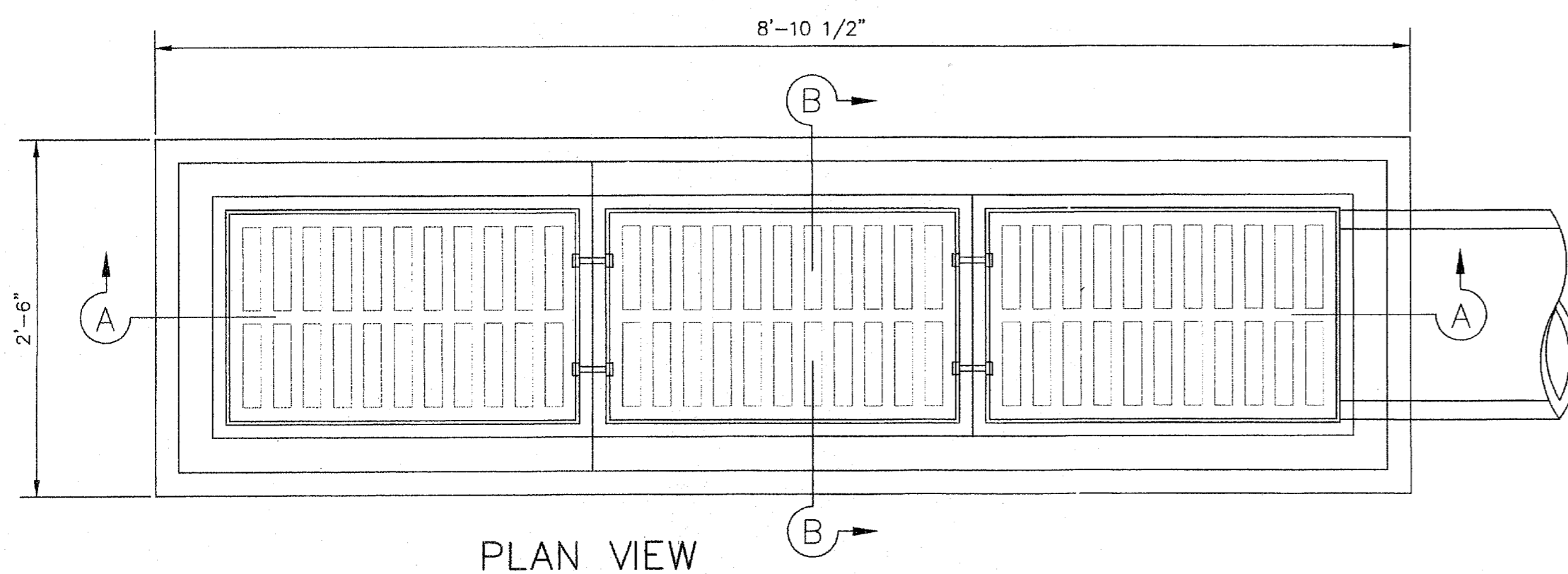
FRAME AND GRATE SHALL BE PATTERN NO. 814 AS MANUFACTURED BY BASS & HAYS FOUNDRY, OR APPROVED EQUAL.



BARRICADE NOTES:

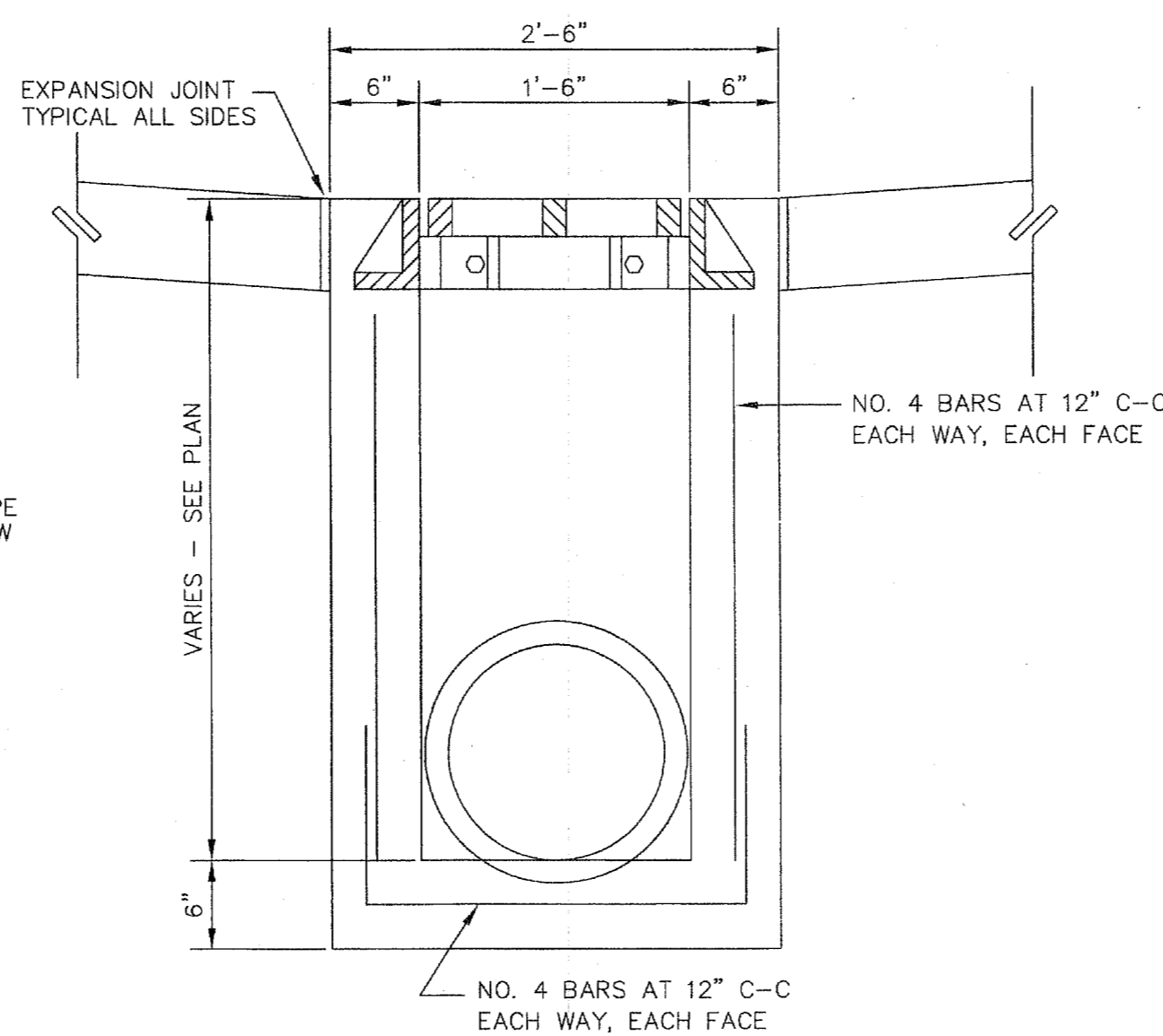
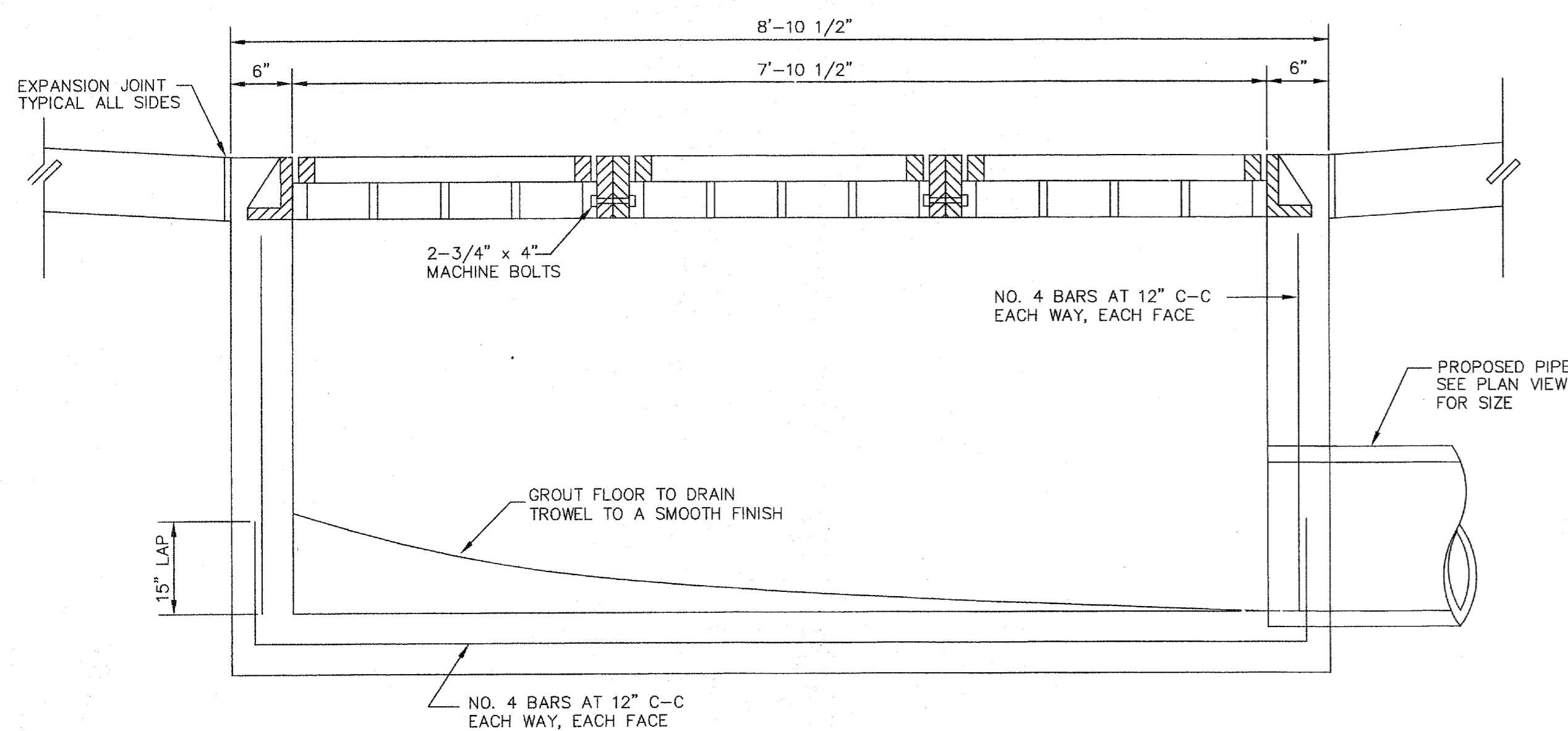
1. BARRICADES SHALL MEET THE REQUIREMENTS OF FAA ADVISORY CIRCULAR 150/5370-2E AND BE APPROVED BY THE ENGINEER
2. CONTRACTOR SHALL WEIGHT BARRICADE TO PREVENT DISPLACEMENT. METHOD TO BE APPROVED BY THE ENGINEER.
3. BARRICADES SHALL BE LOCATED AT THE 20' CENTER TO CENTER MAX SPACING
4. BARRICADES SHALL BE PLACED ALONG THE EDGE OF EXISTING PAVEMENT.

LOW PROFILE AIRCRAFT BARRICADE (MOVEMENT AREAS)
SCALE: NONE



NOTES:

1. ALL LAPS AND EXTENSIONS OF REINFORCING BARS SHALL BE 30 BAR DIAMETERS UNLESS NOTED OTHERWISE.
2. TACK WELD GRATES IN PLACE OR USE GRATE LOCK.
3. PIPE MAY BE PLACED IN ANY WALL, BUT SHALL NOT ENTER ANY CORNER, OR BOTTOM.
4. CONCRETE TO BE A MINIMUM OF 4200 P.S.I.



SECTION A-A

SECTION B-B

GRATE INLET DETAILS

