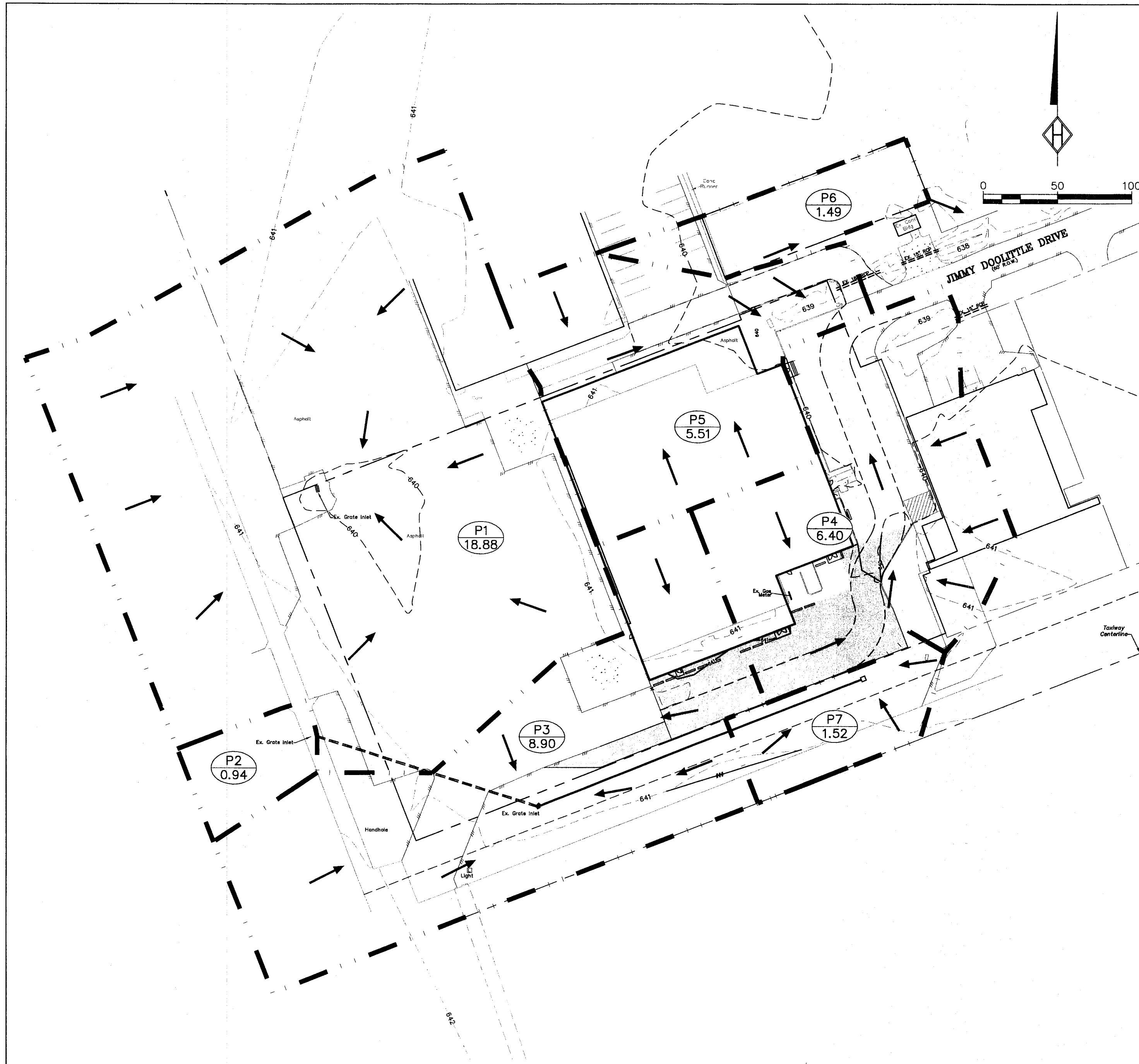


EXISTING DRAINAGE AREA MAP

THE TOPOGRAPHIC INFORMATION FOR THE OFF-SITE DRAINAGE AREA MAP WAS OBTAINED FROM THE NORTH CENTRAL TEXAS COUNCIL OF GOVERNMENTS WEBSITE WWW.DFWINFO.COM.



PROPOSED DRAINAGE AREA MAP

EXISTING DRAINAGE CALCULATIONS						
DRAINAGE AREA	AREA ACRES	"C"	Tc (min)	"I-100" (in/hr)	"Q-100" (cfs)	COMMENTS
E1	2.55	0.90	10	8.74	20.06	TO ON-SITE GRATE INLET
E2	0.12	0.90	10	8.74	0.94	TO OFF-SITE GRATE INLET
E3	1.05	0.90	10	8.74	8.26	TO OFF-SITE GRATE INLET
E4	1.09	0.90	10	8.74	8.57	TO OFF-SITE CULVERT EAST
E5	0.55	0.90	10	8.74	4.33	TO OFF-SITE CULVERT EAST
E6	0.19	0.90	10	8.74	1.49	TO OFF-SITE EAST
TOTAL	5.55				43.66	

PROPOSED DRAINAGE CALCULATIONS						
DRAINAGE AREA	AREA ACRES	"C"	Tc (min)	"I-100" (in/hr)	"Q-100" (cfs)	COMMENTS
P1	2.40	0.90	10	8.74	18.88	TO ON-SITE GRATE INLET
P2	0.12	0.90	10	8.74	0.94	TO OFF-SITE GRATE INLET
P3	1.13	0.90	10	8.74	8.90	TO OFF-SITE GRATE INLET
P4	0.81	0.90	10	8.74	6.40	TO OFF-SITE CULVERT EAST
P5	0.70	0.90	10	8.74	5.51	TO OFF-SITE CULVERT EAST
P6	0.19	0.90	10	8.74	1.49	TO OFF-SITE EAST
P7*	0.19	0.90	10	8.74	1.52	TO PROPOSED GRATE INLET
TOTAL	5.55				43.64	

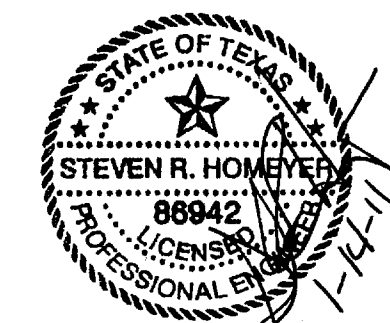
LEGEND

- A DRAINAGE AREA NUMBER
- Q Q100
- DRAINAGE AREA LIMITS
- - - - - EXISTING CONTOURS
- PROPOSED CONTOURS
- DIRECTION OF STORMWATER FLOW

BENCHMARK INFORMATION:

BM - SET SQUARE CUT ON THE NORTHEAST CORNER OF THE EXISTING GRATE INLET. ELEVATION = 640.00

* - THE PROPOSED 8" PVC PIPE FROM THE PROPOSED GRATE INLET TO THE EXISTING GRATE INLET DOES NOT HAVE THE CAPACITY TO CONVEY THE 100-YEAR STORM EVENT BASED ON THE FLOW LINE ELEVATION OF THE EXISTING INLET. HOWEVER, THERE IS SUFFICIENT CAPACITY IN THE PROPOSED INLET BOWL TO CONTAIN THE ADDITIONAL FLOW DURING THE 100-YEAR STORM EVENT. SHOULD THE PIPE OR INLET BECOME CLOGGED, THE RUNOFF FROM DRAINAGE AREA #7 WILL FLOW INTO DRAINAGE AREA #4 AND WILL NOT ENCROACH ONTO TAXIWAY SIERRA.



REVISIONS:
01/14/2011
1. REVISED DRAINAGE AREAS TO REFLECT CONSTRUCTION MODIFICATIONS.
2. REMOVED CONC. FLUME & REVISED STORM PIPE TO CONFORM TO CONSTRUCTION MODIFICATIONS.

DRAWN: HEI

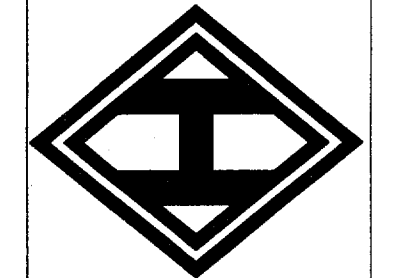
DATE: 12/18/08

HEI #: 08-152

SHEET NO:

C6

HOMEYER ENGINEERING, INC.
CIVIL ENGINEERING, PLANNING, SITE & LAND PLANNING
P. O. BOX 294527 • LENEVILLE, TEXAS • 75029
972-906-9985 PHONE • 972-906-9987 FAX
WWW.HOMEYERENGINEERING.COM



TURBINE AIR EXPANSION
ADDISON AIRPORT, BLDG. A-5
2.404 ACRES, ZONED - I-3
4550 JIMMY DOOLITTLE DRIVE
TOWN OF ADDISON
DALLAS COUNTY, TEXAS

DRAINAGE AREA
MAP