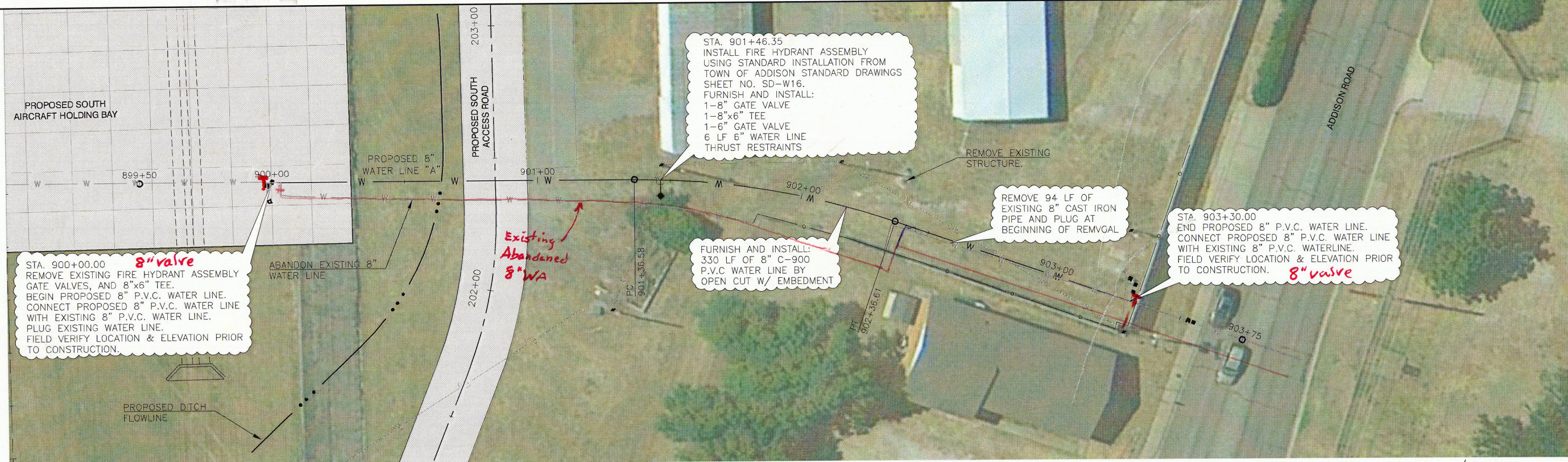


File: L:\2011\11081100 - ADS Taxiway Alpha Improvements\Drawings\ADS_SAHB_C406_WL.dwg Last Saved: 11/26/2012 2:07 PM Last saved by: Mirmcconally
 Last Plotted: 11/26/2012 2:07 PM Plotted by: Mirmcconally



REGISTRATION NO. F-5713

THIS DOCUMENT IS RELEASED FOR THE PURPOSE OF INTERIM REVIEW UNDER THE AUTHORITY OF FRANK O. McILLWAIN, P.E. 93229 ON 11/26/2012. IT IS NOT TO BE USED FOR CONSTRUCTION, BIDDING, OR PERMIT PURPOSES.

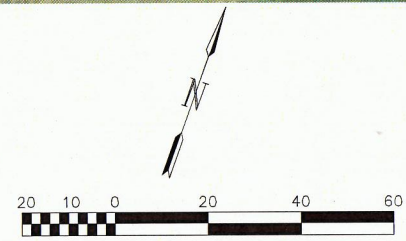
REV.	DATE	DESCRIPTION	BY
1	8/6/12	ADDENDUM NO. 1	FOM
2	11/6/12	CHANGE ORDER NO. 1	FOM
3	11/20/12	WALL PLAN REVISION	FOM
4	11/29/12	CHANGE ORDER NO. 2	FOM

DESCRIPTION	STA.	NORTHING	EASTING	RADIUS	LENGTH	DELTA
WATER LINE "A"						
POB	899+50.00	7036984.05	2480644.62			
PC	901+36.58	7037048.30	2480819.79			
PI	901+87.06	7037065.68	2480867.18	300.00	100.03	19°06'17" R
PT	902+36.61	7037065.59	2480917.66			
POE	903+75.00	7037069.10	2481056.03			

GENERAL NOTES:
 SEE TOWN OF ADDISON WATER SYSTEM REQUIREMENTS FOR MATERIAL AND CONSTRUCTION REQUIREMENTS.
 SEE NCTCOG SPECIFICATIONS FOR METHOD OF MEASUREMENT AND PAYMENT.

CAUTION: UNDERGROUND UTILITIES EXIST WITHIN AND ADJACENT TO THE LIMITS OF CONSTRUCTION. AN ATTEMPT HAS BEEN MADE TO LOCATE THESE UTILITIES ON THE PLANS. HOWEVER, ALL EXISTING UTILITIES MAY NOT BE SHOWN AND THE ACTUAL LOCATIONS OF THE UTILITIES MAY VARY FROM THE LOCATIONS SHOWN. PRIOR TO BEGINNING ANY TYPE OF EXCAVATION, THE CONTRACTOR SHALL CONTACT THE UTILITIES INVOLVED AND MAKE ARRANGEMENTS FOR THE LOCATION OF THE UTILITIES ON THE GROUND. THE CONTRACTOR SHALL MAINTAIN THE UTILITY LOCATION MARKINGS UNTIL THEY ARE NO LONGER NECESSARY.

TEXAS STATE LAW, THE UNDERGROUND FACILITIES DAMAGE PREVENTION ACT, REQUIRES TWO WORKING DAYS ADVANCE NOTIFICATION THROUGH THE TEXAS ONE-CALL SYSTEM CENTER BEFORE EXCAVATING USING MECHANIZED EQUIPMENT OR EXPLOSIVES (EXCEPT IN THE CASE OF AN EMERGENCY). THE ONE-CALL SYSTEM PHONE NUMBER IS 1-800-245-4545. THE CONTRACTOR IS ADVISED THAT THERE IS A SEVERE PENALTY FOR NOT MAKING THIS CALL. NOT ALL UTILITY COMPANIES ARE MEMBERS OF THE TEXAS ONE-CALL SYSTEM; THEREFORE, THE CONTRACTOR IS ADVISED TO CONTACT ALL NON-MEMBER UTILITIES AS WELL AS THE ONE-CALL SYSTEM.



ADDISON AIRPORT
 ADDISON, TX
 TAXIWAY ALPHA IMPROVEMENTS

SOUTH AIRCRAFT HOLDING BAY - SOUTH WATER LINE PLAN & PROFILE

JOB NO.: 11081100
 DATE: FEB., 2012
 DESIGNED BY: MRM
 DRAWN BY: BMN

BAR IS ONE INCH ON ORIGINAL DRAWING.
 IF NOT ONE INCH ON THIS SHEET, ADJUST SCALES ACCORDINGLY.

SHEET NUMBER
C-406

.pdf 11/19/13

File: L:\2011\11081100 - ADS Taxiway Alpha Improvements\Drawings\ADS_SAHB_C406_WL.dwg Last Saved by: Mrrconally
 Last Plotted by: McAnally, Mitchell, R Plot Date: 11/26/2012 2:07 PM Plotter used: \\gpc02\Canon IR C4080 PS

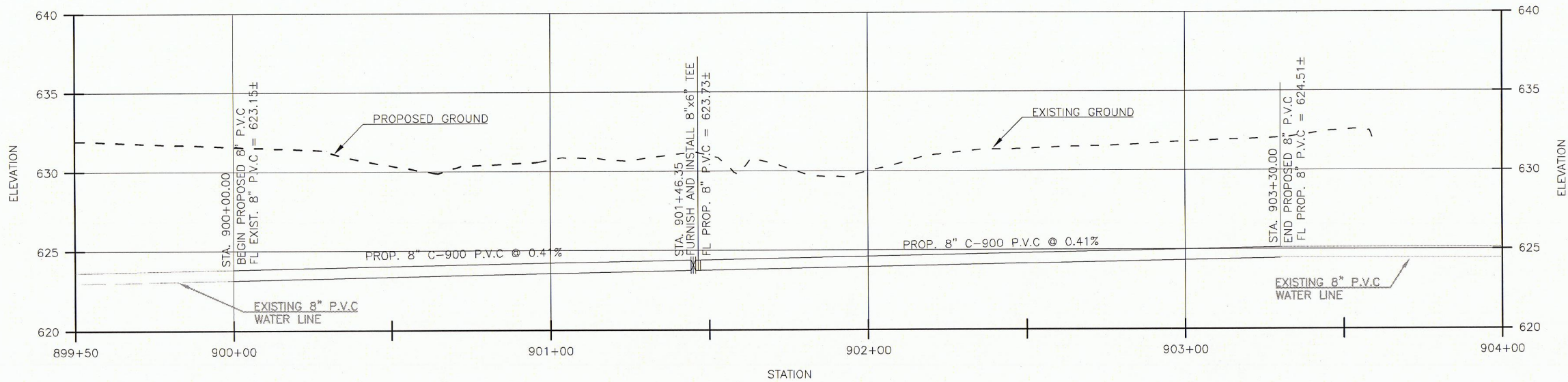
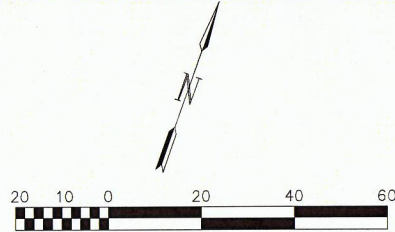


WATER LINE CURVE DATA						
DESCRIPTION	STA.	NORTHING	EASTING	RADIUS	LENGTH	DELTA
WATER LINE "A"						
POB	899+50.00	7036984.05	2480644.62			
PC	901+36.58	7037048.30	2480819.79			
PI	901+87.06	7037065.68	2480867.18	300.00	100.03	19°06'17" R
PT	902+36.61	7037066.59	2480917.66			
POE	903+75.00	7037069.10	2481056.03			

GENERAL NOTES:
 SEE TOWN OF ADDISON WATER SYSTEM REQUIREMENTS FOR MATERIAL AND CONSTRUCTION REQUIREMENTS.
 SEE NCTCOG SPECIFICATIONS FOR METHOD OF MEASUREMENT AND PAYMENT.

CAUTION: UNDERGROUND UTILITIES EXIST WITHIN AND ADJACENT TO THE LIMITS OF CONSTRUCTION. AN ATTEMPT HAS BEEN MADE TO LOCATE THESE UTILITIES ON THE PLANS. HOWEVER, ALL EXISTING UTILITIES MAY NOT BE SHOWN AND THE ACTUAL LOCATIONS OF THE UTILITIES MAY VARY FROM THE LOCATIONS SHOWN. PRIOR TO BEGINNING ANY TYPE OF EXCAVATION, THE CONTRACTOR SHALL CONTACT THE UTILITIES INVOLVED AND MAKE ARRANGEMENTS FOR THE LOCATION OF THE UTILITIES ON THE GROUND. THE CONTRACTOR SHALL MAINTAIN THE UTILITY LOCATION MARKINGS UNTIL THEY ARE NO LONGER NECESSARY.

TEXAS STATE LAW, THE UNDERGROUND FACILITIES DAMAGE PREVENTION ACT, REQUIRES TWO WORKING DAYS ADVANCE NOTIFICATION THROUGH THE TEXAS ONE-CALL SYSTEM CENTER BEFORE EXCAVATING USING MECHANIZED EQUIPMENT OR EXPLOSIVES (EXCEPT IN THE CASE OF AN EMERGENCY). THE ONE-CALL SYSTEM PHONE NUMBER IS 1-800-245-4545. THE CONTRACTOR IS ADVISED THAT THERE IS A SEVERE PENALTY FOR NOT MAKING THIS CALL. NOT ALL UTILITY COMPANIES ARE MEMBERS OF THE TEXAS ONE-CALL SYSTEM; THEREFORE, THE CONTRACTOR IS ADVISED TO CONTACT ALL NON-MEMBER UTILITIES AS WELL AS THE ONE-CALL SYSTEM.



REGISTRATION NO. F-5713

THIS DOCUMENT IS RELEASED FOR THE PURPOSE OF INTERIM REVIEW UNDER THE AUTHORITY OF FRANK O. McILLWAIN, P.E. 932229 ON 11/26/2012. IT IS NOT TO BE USED FOR CONSTRUCTION, BIDDING, OR PERMIT PURPOSES.

REV.	DATE	DESCRIPTION	BY	FOM
1	8/6/12	ADDENDUM NO. 1	FOM	
2	11/6/12	CHANGE ORDER NO. 1	FOM	
3	11/20/12	WALL PLAN REVISION	FOM	
4	11/29/12	CHANGE ORDER NO. 2	FOM	

ADDISON AIRPORT
 ADDISON, TX
 TAXIWAY ALPHA IMPROVEMENTS

SOUTH AIRCRAFT HOLDING BAY - SOUTH WATER LINE PLAN & PROFILE

JOB NO.: 11081100
 DATE: FEB., 2012
 DESIGNED BY: MRM
 DRAWN BY: BMN

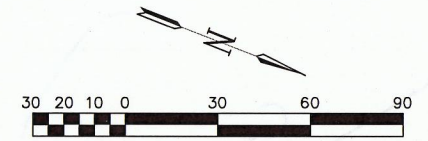
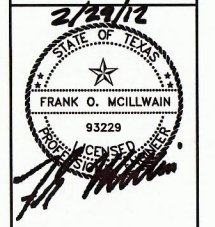
BAR IS ONE INCH ON ORIGINAL DRAWING
 0 1"
 IF NOT ONE INCH ON THIS SHEET, ADJUST SCALES ACCORDINGLY.

SHEET NUMBER
C-406

TAXIWAY ALPHA '12

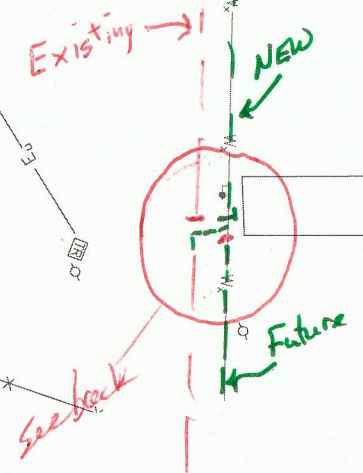
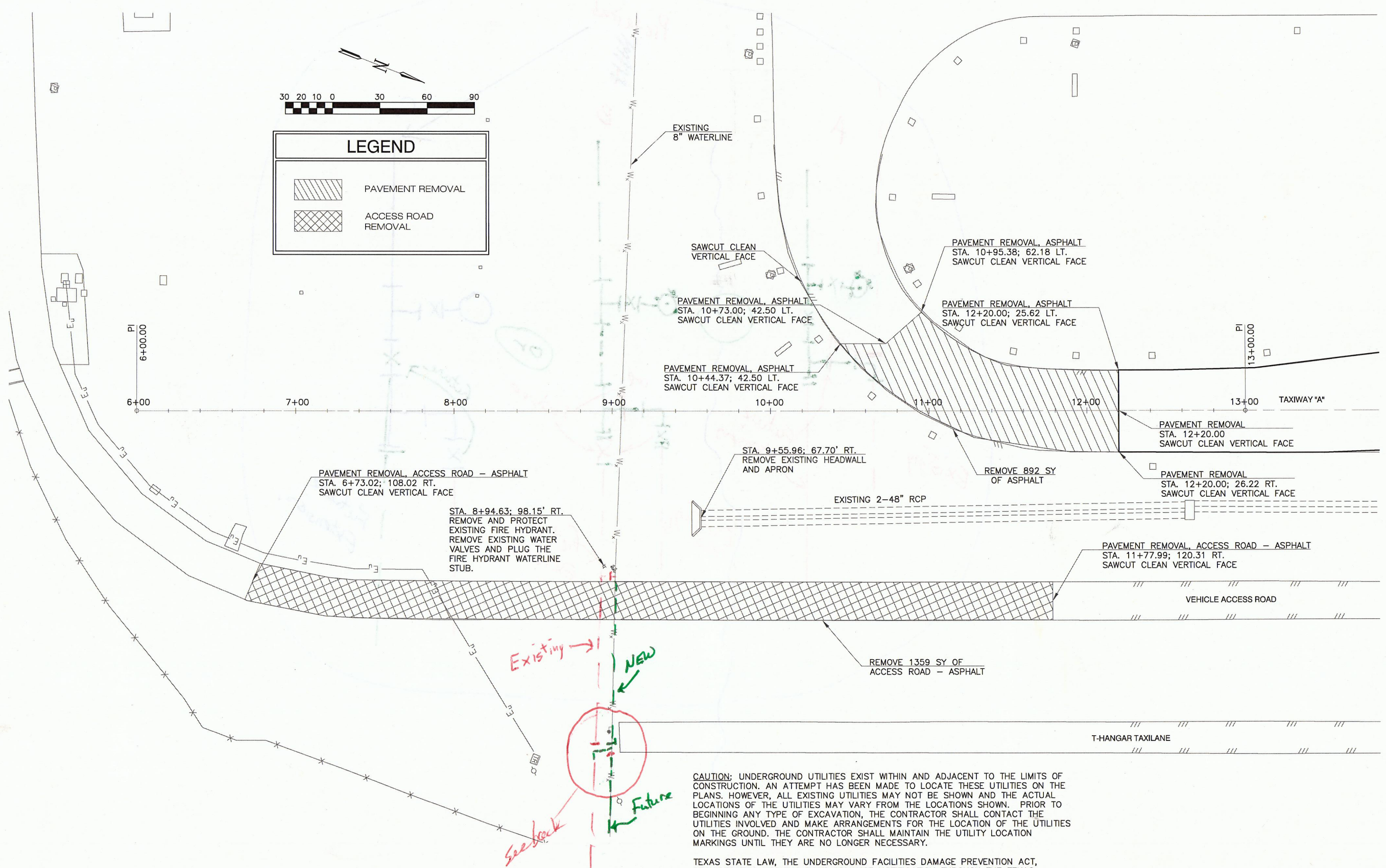


REGISTRATION NO.
F-5713



LEGEND	
	PAVEMENT REMOVAL
	ACCESS ROAD REMOVAL

File: L:\2011\11081100 - ADS Taxiway Alpha Improvements\Drawings\ADS_SAHB_C401_D1.dwg Last Saved by: Mirmcally
Last Plotted by: McAnally, Mitchell, R Plot Style: Garver Standard Half.ctb Plot Scale: 1:2 Plot Date: 2/29/2012 10:58 AM Plotter used: \\gfydc02\Canon IR C4080 PS



CAUTION: UNDERGROUND UTILITIES EXIST WITHIN AND ADJACENT TO THE LIMITS OF CONSTRUCTION. AN ATTEMPT HAS BEEN MADE TO LOCATE THESE UTILITIES ON THE PLANS. HOWEVER, ALL EXISTING UTILITIES MAY NOT BE SHOWN AND THE ACTUAL LOCATIONS OF THE UTILITIES MAY VARY FROM THE LOCATIONS SHOWN. PRIOR TO BEGINNING ANY TYPE OF EXCAVATION, THE CONTRACTOR SHALL CONTACT THE UTILITIES INVOLVED AND MAKE ARRANGEMENTS FOR THE LOCATION OF THE UTILITIES ON THE GROUND. THE CONTRACTOR SHALL MAINTAIN THE UTILITY LOCATION MARKINGS UNTIL THEY ARE NO LONGER NECESSARY.

TEXAS STATE LAW, THE UNDERGROUND FACILITIES DAMAGE PREVENTION ACT, REQUIRES TWO WORKING DAYS ADVANCE NOTIFICATION THROUGH THE TEXAS ONE-CALL SYSTEM CENTER BEFORE EXCAVATING USING MECHANIZED EQUIPMENT OR EXPLOSIVES (EXCEPT IN THE CASE OF AN EMERGENCY). THE ONE-CALL SYSTEM PHONE NUMBER IS 1-800-245-4545. THE CONTRACTOR IS ADVISED THAT THERE IS A SEVERE PENALTY FOR NOT MAKING THIS CALL. NOT ALL UTILITY COMPANIES ARE MEMBERS OF THE TEXAS ONE-CALL SYSTEM; THEREFORE, THE CONTRACTOR IS ADVISED TO CONTACT ALL NON-MEMBER UTILITIES AS WELL AS THE ONE-CALL SYSTEM.

THIS DOCUMENT IS RELEASED FOR THE PURPOSE OF INTERIM REVIEW UNDER THE AUTHORITY OF FRANK O. MCILLWAIN, P.E. 93229 ON 09/29/2011. IT IS NOT TO BE USED FOR CONSTRUCTION, BIDDING, OR PERMIT PURPOSES.

REV.	DATE	DESCRIPTION	BY

ADDISON AIRPORT
ADDISON, TX

TAXIWAY ALPHA IMPROVEMENTS

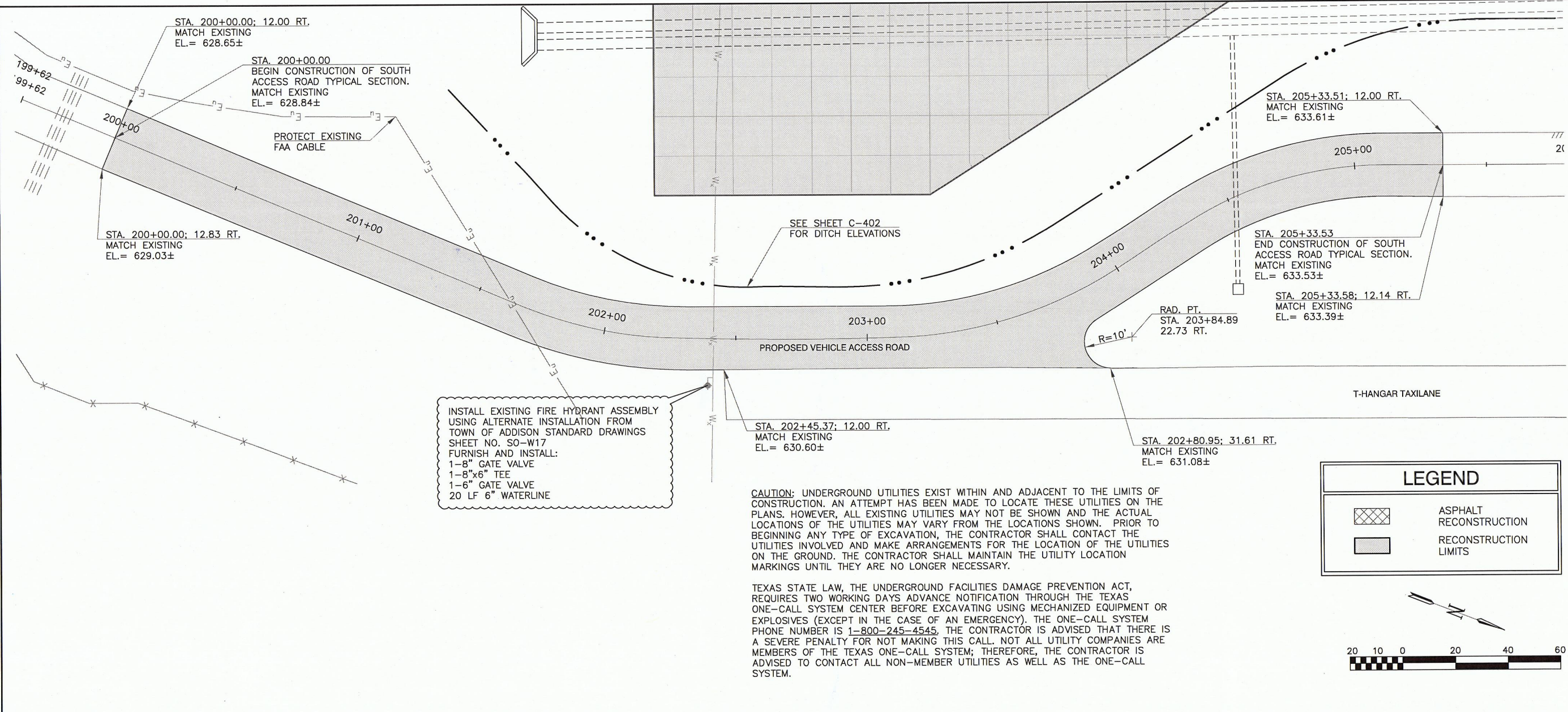
SOUTH AIRCRAFT HOLDING BAY - DEMOLITION PLAN (ALTERNATE D)

JOB NO.: 11081100
DATE: FEB., 2012
DESIGNED BY: MRM
DRAWN BY: BMN

BAR IS ONE INCH ON ORIGINAL DRAWING
IF NOT ONE INCH ON THIS SHEET, ADJUST SCALES ACCORDINGLY.

SHEET NUMBER
C-401

File: L:\2011\11081100 - ADS Taxiway Alpha Improvements\Drawings\ADS_SAHB_C405_AR.dwg Plot Date: 2/29/2012 11:10 AM Plotter: garver\jg\plotter.dwg
 Last Saved: 2/17/2012 2:50 PM Last Saved by: Mmmccolly
 Last Plotted: 2/29/2012 11:10 AM Plotted by: jg



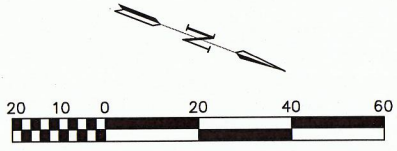
INSTALL EXISTING FIRE HYDRANT ASSEMBLY USING ALTERNATE INSTALLATION FROM TOWN OF ADDISON STANDARD DRAWINGS SHEET NO. SO-W17 FURNISH AND INSTALL:
 1-8" GATE VALVE
 1-8"x6" TEE
 1-6" GATE VALVE
 20 LF 6" WATERLINE

CAUTION: UNDERGROUND UTILITIES EXIST WITHIN AND ADJACENT TO THE LIMITS OF CONSTRUCTION. AN ATTEMPT HAS BEEN MADE TO LOCATE THESE UTILITIES ON THE PLANS. HOWEVER, ALL EXISTING UTILITIES MAY NOT BE SHOWN AND THE ACTUAL LOCATIONS OF THE UTILITIES MAY VARY FROM THE LOCATIONS SHOWN. PRIOR TO BEGINNING ANY TYPE OF EXCAVATION, THE CONTRACTOR SHALL CONTACT THE UTILITIES INVOLVED AND MAKE ARRANGEMENTS FOR THE LOCATION OF THE UTILITIES ON THE GROUND. THE CONTRACTOR SHALL MAINTAIN THE UTILITY LOCATION MARKINGS UNTIL THEY ARE NO LONGER NECESSARY.

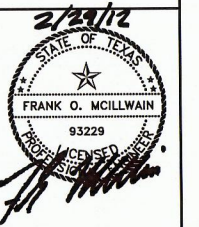
TEXAS STATE LAW, THE UNDERGROUND FACILITIES DAMAGE PREVENTION ACT, REQUIRES TWO WORKING DAYS ADVANCE NOTIFICATION THROUGH THE TEXAS ONE-CALL SYSTEM CENTER BEFORE EXCAVATING USING MECHANIZED EQUIPMENT OR EXPLOSIVES (EXCEPT IN THE CASE OF AN EMERGENCY). THE ONE-CALL SYSTEM PHONE NUMBER IS 1-800-245-4545. THE CONTRACTOR IS ADVISED THAT THERE IS A SEVERE PENALTY FOR NOT MAKING THIS CALL. NOT ALL UTILITY COMPANIES ARE MEMBERS OF THE TEXAS ONE-CALL SYSTEM; THEREFORE, THE CONTRACTOR IS ADVISED TO CONTACT ALL NON-MEMBER UTILITIES AS WELL AS THE ONE-CALL SYSTEM.

LEGEND

	ASPHALT RECONSTRUCTION
	RECONSTRUCTION LIMITS



REGISTRATION NO. F-5713



REV.	DATE	DESCRIPTION	BY

ADDISON AIRPORT
ADDISON, TX

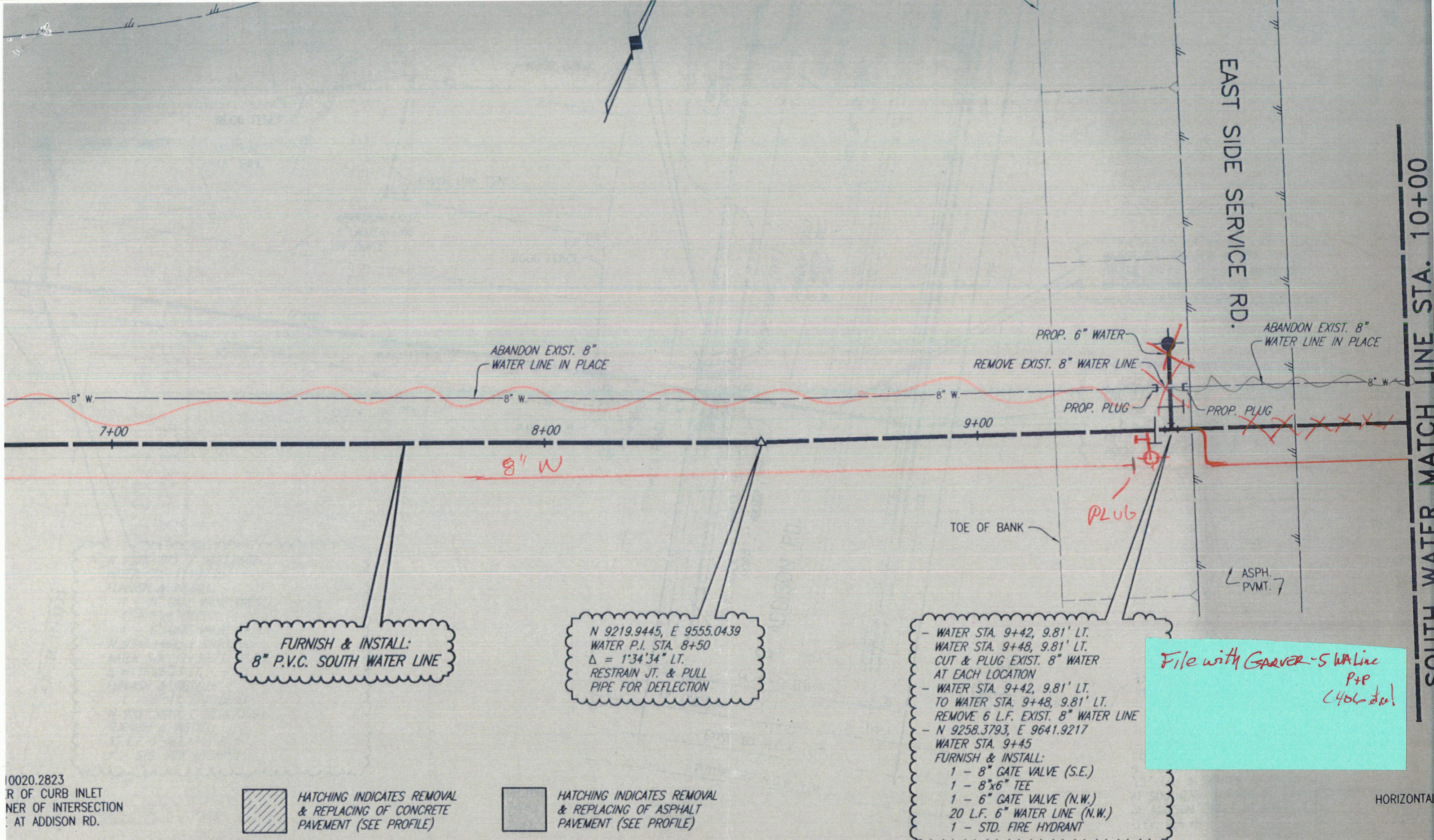
TAXIWAY ALPHA IMPROVEMENTS

SOUTH AIRCRAFT HOLDING BAY - SOUTH ACCESS ROAD PLAN & PROFILE (ALTERNATE D)

JOB NO.: 11081100
DATE: FEB., 2012
DESIGNED BY: MRM
DRAWN BY: BMN

BAR IS ONE INCH ON ORIGINAL DRAWING
IF NOT ONE INCH ON THIS SHEET, ADJUST SCALES ACCORDINGLY.

SHEET NUMBER
C-405



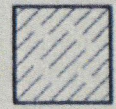
FURNISH & INSTALL:
8" P.V.C. SOUTH WATER LINE

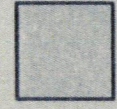
N 9219.9445, E 9555.0439
WATER P.I. STA. 8+50
 $\Delta = 1^{\circ}34'34''$ LT.
RESTRAIN JT. & PULL
PIPE FOR DEFLECTION

- WATER STA. 9+42, 9.81' LT.
WATER STA. 9+48, 9.81' LT.
CUT & PLUG EXIST. 8" WATER
AT EACH LOCATION
- WATER STA. 9+42, 9.81' LT.
TO WATER STA. 9+48, 9.81' LT.
REMOVE 6 L.F. EXIST. 8" WATER LINE
- N 9258.3793, E 9641.9217
WATER STA. 9+45
FURNISH & INSTALL:
1 - 8" GATE VALVE (S.E.)
1 - 8"x6" TEE
1 - 6" GATE VALVE (N.W.)
20 L.F. 6" WATER LINE (N.W.)
1 - STD. FIRE HYDRANT

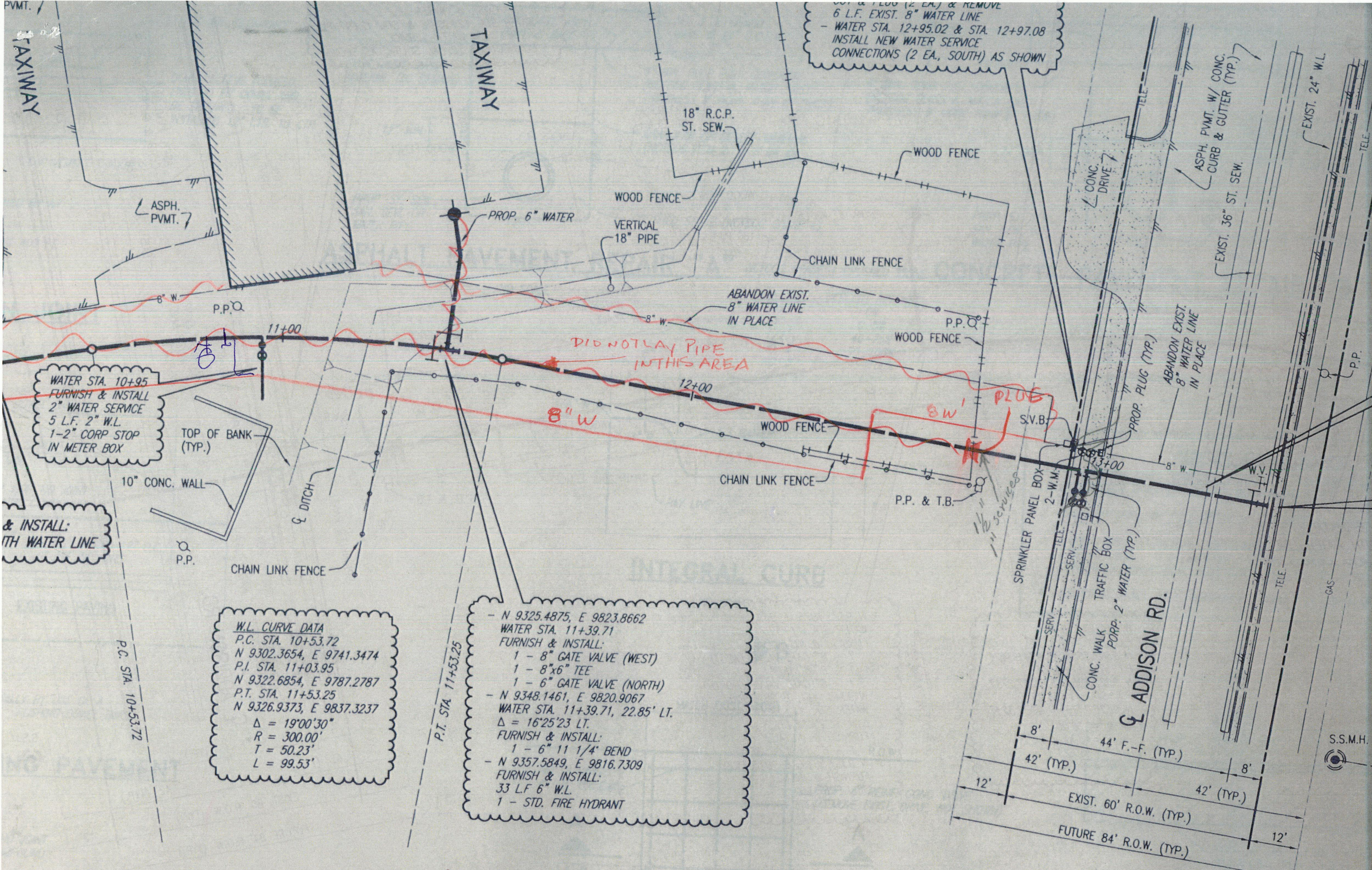
File with Garver-S WA Line
P+P
C406 doc!

10020.2823
CORNER OF CURB INLET
CORNER OF INTERSECTION
AT ADDISON RD.

 HATCHING INDICATES REMOVAL
& REPLACING OF CONCRETE
PAVEMENT (SEE PROFILE)

 HATCHING INDICATES REMOVAL
& REPLACING OF ASPHALT
PAVEMENT (SEE PROFILE)

HORIZONTAL



6 L.F. EXIST. 8" WATER LINE
 - WATER STA. 12+95.02 & STA. 12+97.08
 INSTALL NEW WATER SERVICE
 CONNECTIONS (2 EA., SOUTH) AS SHOWN

WATER STA. 10+95
 FURNISH & INSTALL
 2" WATER SERVICE
 5 L.F. 2" W.L.
 1-2" CORP STOP
 IN METER BOX

& INSTALL:
 WITH WATER LINE

W.L. CURVE DATA
 P.C. STA. 10+53.72
 N 9302.3654, E 9741.3474
 P.I. STA. 11+03.95
 N 9322.6854, E 9787.2787
 P.T. STA. 11+53.25
 N 9326.9373, E 9837.3237
 $\Delta = 19^{\circ}00'30"$
 $R = 300.00'$
 $T = 50.23'$
 $L = 99.53'$

- N 9325.4875, E 9823.8662
 WATER STA. 11+39.71
 FURNISH & INSTALL:
 1 - 8" GATE VALVE (WEST)
 1 - 8"x6" TEE
 1 - 6" GATE VALVE (NORTH)
 - N 9348.1461, E 9820.9067
 WATER STA. 11+39.71, 22.85' LT.
 $\Delta = 16^{\circ}25'23" LT.$
 FURNISH & INSTALL:
 1 - 6" 11 1/4" BEND
 - N 9357.5849, E 9816.7309
 FURNISH & INSTALL:
 33 L.F. 6" W.L.
 1 - STD. FIRE HYDRANT

DID NOT LAY PIPE
 IN THIS AREA

8' 44' F.-F. (TYP.)
 42' (TYP.) 8'
 12' 42' (TYP.) 12'
 EXIST. 60' R.O.W. (TYP.)
 FUTURE 84' R.O.W. (TYP.)

ADDISON RD.

S.S.M.H.

ADDISON MUNICIPAL AIRPORT ADDITION

BLOCK 1

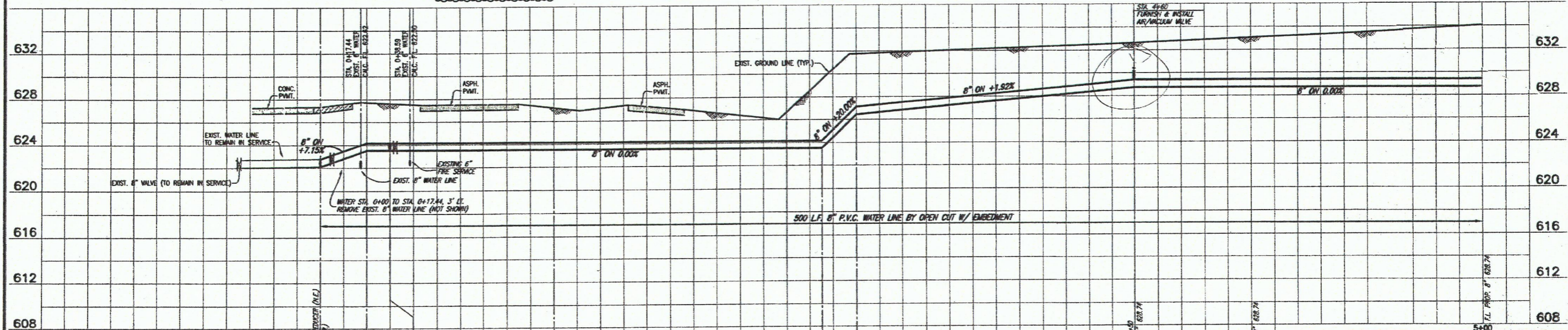
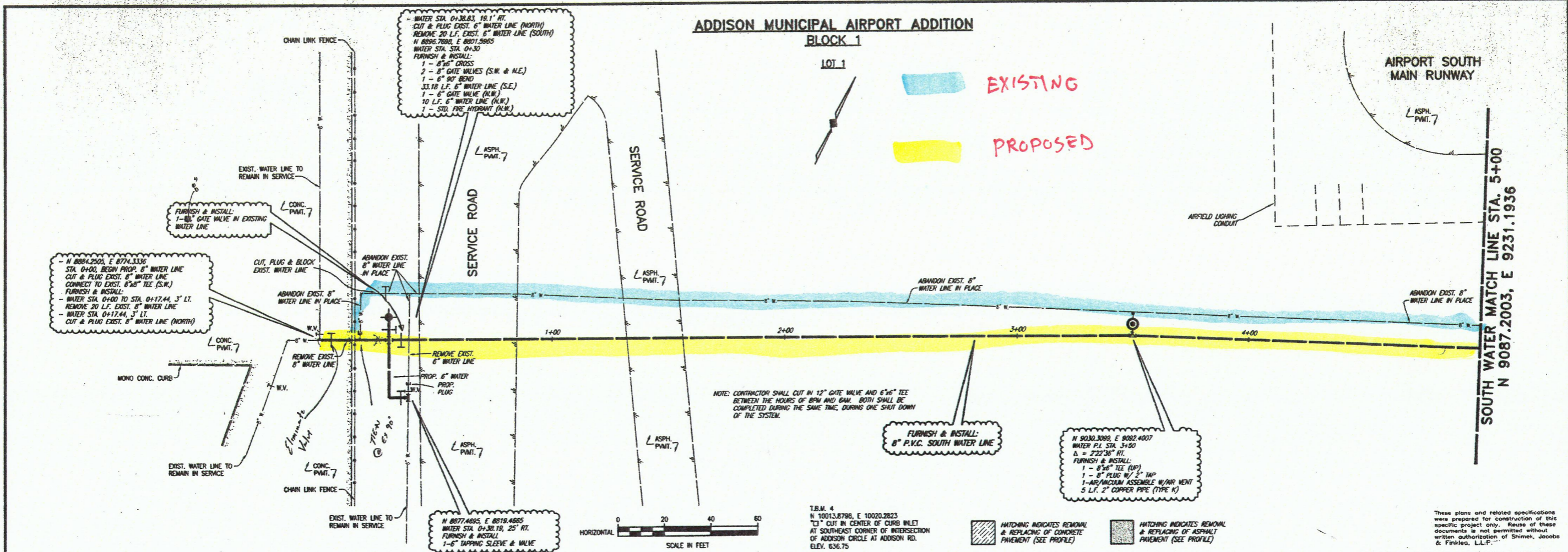
LOT 1

EXISTING

PROPOSED

AIRPORT SOUTH MAIN RUNWAY

SOUTH WATER MATCH LINE STA. 5+00
N 9087.2003, E 9231.1936



TOWN OF ADDISON, TEXAS

ADDISON AIRPORT SANITARY SEWER & WATER MAIN REPLACEMENT

SOUTH AIRPORT WATER LINE PLAN - PROFILE

STA. 0+00 TO STA. 5+00

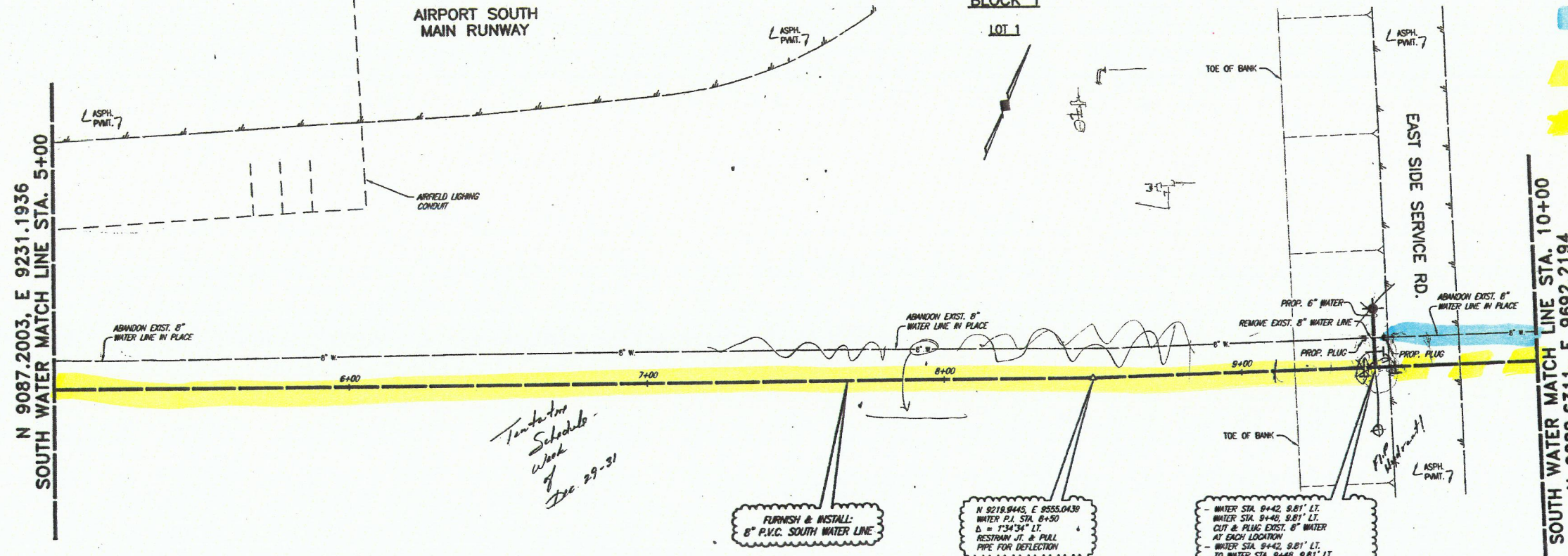
SHIMEK, JACOBS & FINKLEA, L.L.P.
CONSULTING ENGINEERS
Dallas, Texas

DESIGNED BY: J.W.B. PROJECT: 96 169 SHEET NO. 18
DRAWN BY: S.J. & F. DATE: FEBRUARY 1997 OF 24 SHEETS

THESE DOCUMENTS ARE FOR BIDDING, CONSTRUCTION, AND PERMIT PURPOSES.
DATE: 2/5/97

STATE OF TEXAS
JOHN B. BISHOPP
REGISTERED PROFESSIONAL ENGINEER

ADDISON MUNICIPAL AIRPORT ADDITION
BLOCK 1



EXISTING
PROPOSED
PROPOSED NOT INSTALLED

N 9087.2003, E 9231.1936
SOUTH WATER MATCH LINE STA. 5+00

SOUTH WATER MATCH LINE STA. 10+00
N 9280.6311, E 9692.2194

*Temporary Schedule -
Week of
Dec 29-31*

FURNISH & INSTALL:
8" P.V.C. SOUTH WATER LINE

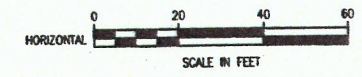
N 8218.8445, E 8555.0439
WATER P.I. STA. 8+50
D = 1'-34 3/4" LT.
RESTRAIN J.T. & PULL
PIPE FOR DEFLECTION

WATER STA. 9+42, 9.81' LT.
WATER STA. 9+46, 9.81' LT.
CUT & PLUG EXIST. 8" WATER
AT EACH LOCATION
WATER STA. 9+42, 9.81' LT.
TO WATER STA. 9+46, 9.81' LT.
REMOVE 6 L.F. EXIST. 8" WATER LINE
N 8258.3783, E 9641.9217
WATER STA. 9+46
FURNISH & INSTALL:
1 - 8" GATE VALVE (S.E.)
1 - 8" TEE
1 - 8" GATE VALVE (N.W.)
20 L.F. 8" WATER LINE (N.W.)
1 - STD. FIRE HYDRANT

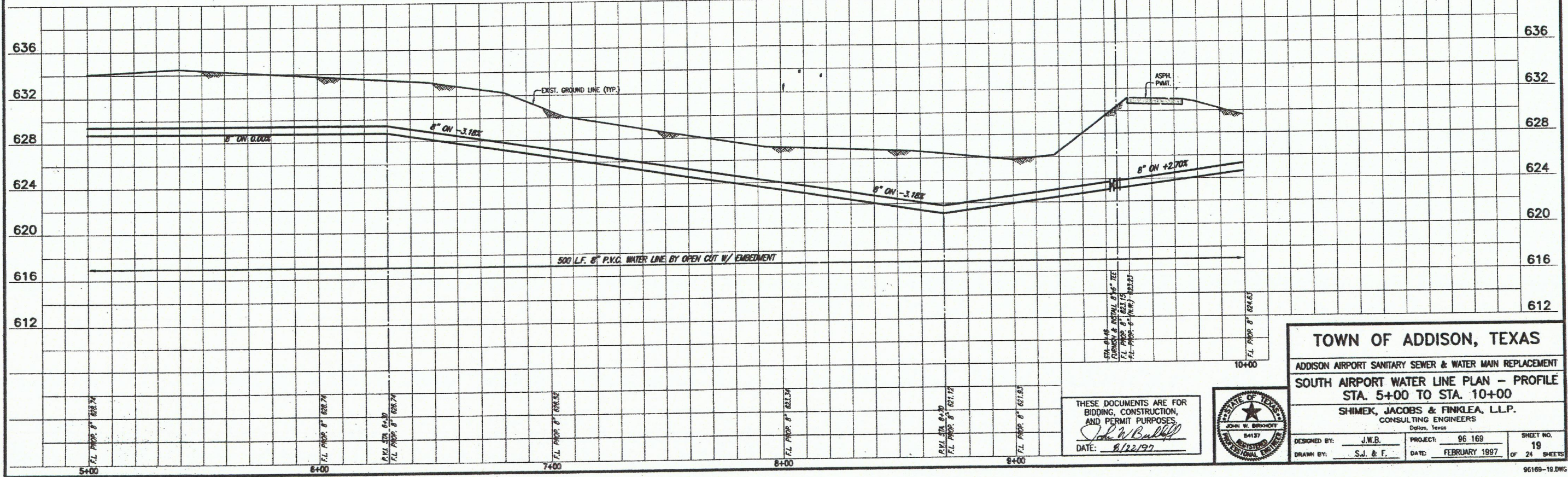
T.B.M. 4
N 10013.8786, E 10020.2823
"C" CUT IN CENTER OF CURB INLET
AT SOUTHEAST CORNER OF INTERSECTION
OF ADDISON CIRCLE AT ADDISON RD.
ELEV. 636.75

HATCHING INDICATES REMOVAL
& REPLACING OF CONCRETE
PAVEMENT (SEE PROFILE)

HATCHING INDICATES REMOVAL
& REPLACING OF ASPHALT
PAVEMENT (SEE PROFILE)



These plans and related specifications were prepared for construction of this specific project only. Reuse of these documents is not permitted without written authorization of Shimek, Jacobs & Finklea, L.L.P.



TOWN OF ADDISON, TEXAS
ADDISON AIRPORT SANITARY SEWER & WATER MAIN REPLACEMENT
SOUTH AIRPORT WATER LINE PLAN - PROFILE
STA. 5+00 TO STA. 10+00
SHIMEK, JACOBS & FINKLEA, L.L.P.
CONSULTING ENGINEERS
Dallas, Texas

DESIGNED BY: J.W.B. PROJECT: 96 169 SHEET NO. 19
DRAWN BY: S.J. & F. DATE: FEBRUARY 1997 OF 24 SHEETS

THESE DOCUMENTS ARE FOR
BIDDING, CONSTRUCTION,
AND PERMIT PURPOSES
John W. Balluff
DATE: 8/22/97



ADDISON MUNICIPAL AIRPORT ADDITION

BLOCK 1

SOUTH WATER MATCH LINE STA. 10+00
N 9280.6311, E 9692.2194

LOT 1
TAXIWAY
BLDG.

ABANDON EXIST. 8" WATER LINE IN PLACE

WATER STA. 10+85
FURNISH & INSTALL
2" WATER SERVICE
5 L.F. 2" W.L.
1-2" CORP STOP
IN METER BOX

FURNISH & INSTALL:
8" P.V.C. SOUTH WATER LINE

STAGE
TRENCH

W.L. CURVE DATA
P.C. STA. 10+53.72
N 9302.3654, E 9741.3474
P.L. STA. 11+03.85
N 9322.6854, E 9787.2787
P.T. STA. 11+43.25
N 9326.9373, E 9837.3237
Δ = 19°00'30"
R = 300.00'
T = 50.23'
L = 99.53'

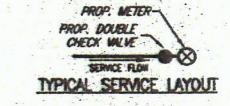
- N 9325.4875, E 9823.8662
WATER STA. 11+39.71
FURNISH & INSTALL:
1 - 6" GATE VALVE (WEST)
1 - 6" GATE VALVE (NORTH)
1 - 6" GATE VALVE (NORTH)
1 - 6" 11 1/4" BEND
WATER STA. 11+39.71, 22.85' LT.
Δ = 16°25'23" LT.
FURNISH & INSTALL:
1 - 6" 11 1/4" BEND
N 9357.5849, E 9816.7309
FURNISH & INSTALL:
33 L.F. 6" W.L.
1 - STD. FIRE HYDRANT

WATER STA. 12+83.00, 5.10' LT.
TO WATER STA. 12+89.01, 8.10' LT.
CUT & PLUG (2 EA.) & REMOVE
6 L.F. EXIST. 8" WATER LINE
WATER STA. 12+85.02 & STA. 12+87.08
INSTALL NEW WATER SERVICE
CONNECTIONS (2 EA. SOUTH) AS SHOWN

EXISTING

PROPOSED

PROPOSED NOT
INSTALLED



WATER SERVICES - SHEET 20

LOCATION	PROP. 2" COPPER
STA. 10+85, RIGHT	15 L.F.

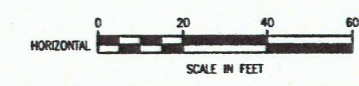
REMOVE EXIST. WATER SERVICE AS REQUIRED. FURNISH & INSTALL PROP. 2" OUTLET, NEW 2" TYPE "K" COPPER WATER PIPE (ASTM-B-88) & METER W/ BOX. CONNECT TO EXIST. WATER LINE AT EACH WATER SERVICE LOCATION.

WATER SERVICES - SHEET 20

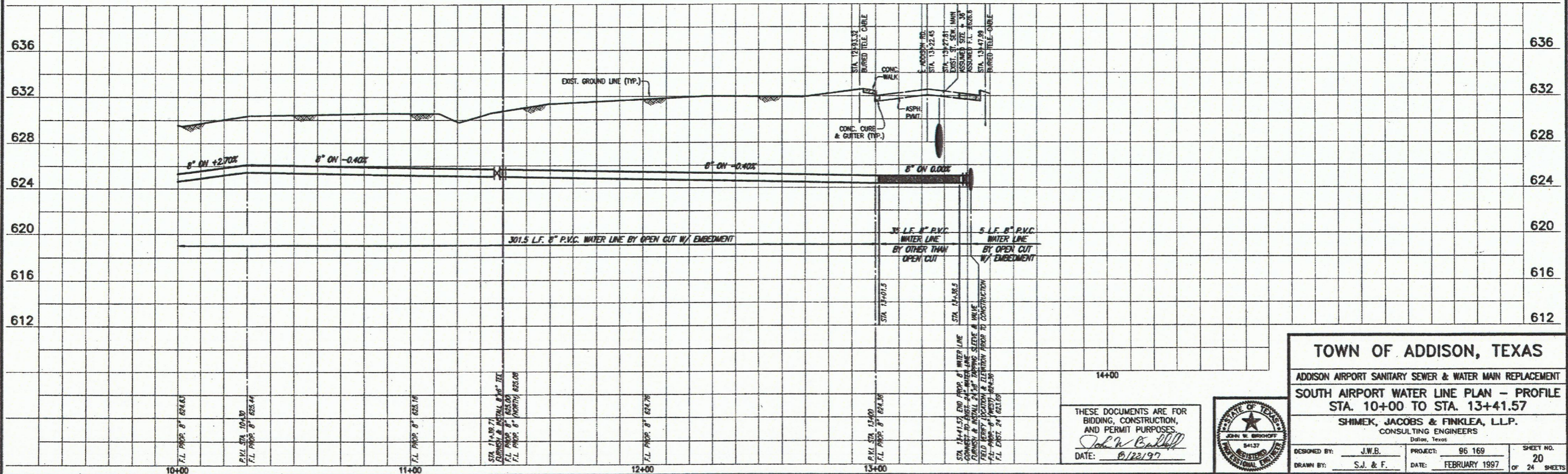
LOCATION	PROP. 1" COPPER
STA. 12+85.02, RIGHT	7.9 L.F.
STA. 12+87.08, RIGHT	7.9 L.F.

REMOVE EXIST. WATER SERVICE AS REQUIRED. FURNISH & INSTALL PROP. 1" OUTLET, NEW 1" TYPE "K" COPPER WATER PIPE (ASTM-B-88) & METER W/ BOX. CONNECT TO EXIST. WATER LINE AT EACH WATER SERVICE LOCATION.

- HATCHING INDICATES WATER LINE BY OTHER THAN OPEN CUT (SEE PROFILE)
- HATCHING INDICATES REMOVAL & REPLACING OF ASPHALT PAVEMENT (SEE PROFILE)
- HATCHING INDICATES REMOVAL & REPLACING OF CONCRETE PAVEMENT (SEE PROFILE)



These plans and related specifications were prepared for construction of this specific project only. Reuse of these documents is not permitted without written authorization of Shimek, Jacobs & Finklea, L.L.P.



TOWN OF ADDISON, TEXAS

ADDISON AIRPORT SANITARY SEWER & WATER MAIN REPLACEMENT

SOUTH AIRPORT WATER LINE PLAN - PROFILE
STA. 10+00 TO STA. 13+41.57

SHIMEK, JACOBS & FINKLEA, L.L.P.
CONSULTING ENGINEERS
Dallas, Texas

DESIGNED BY: J.W.B. PROJECT: 96 169 SHEET NO. 20
DRAWN BY: S.J. & F. DATE: FEBRUARY 1997 OF 24 SHEETS