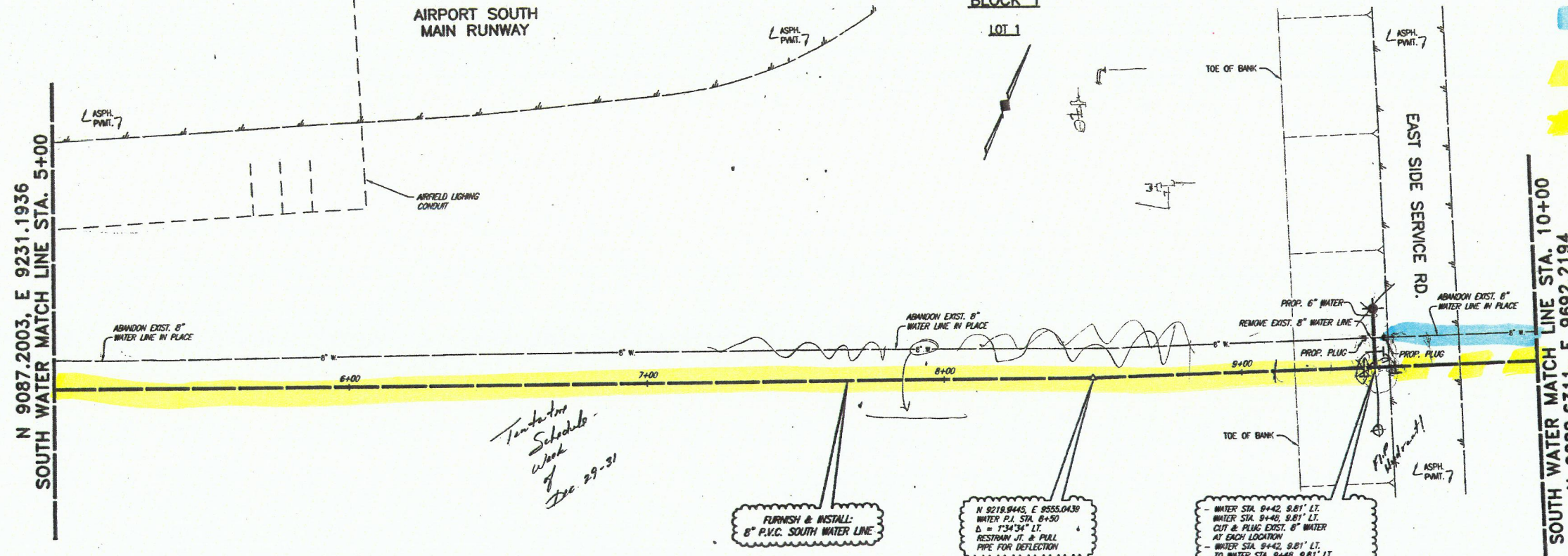


ADDISON MUNICIPAL AIRPORT ADDITION
BLOCK 1



EXISTING
PROPOSED
PROPOSED NOT INSTALLED

N 9087.2003, E 9231.1936
SOUTH WATER MATCH LINE STA. 5+00

SOUTH WATER MATCH LINE STA. 10+00
N 9280.6311, E 9692.2194

*Temporary Schedule -
Week of
Dec 29-31*

FURNISH & INSTALL:
8" P.V.C. SOUTH WATER LINE

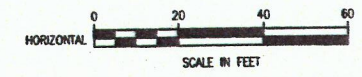
N 8218.8445, E 8555.0439
WATER P.I. STA. 8+50
D = 1'-34 3/4" LT.
RESTRAIN J.T. & PULL
PIPE FOR DEFLECTION

WATER STA. 9+42, 8.81' LT.
WATER STA. 9+48, 8.81' LT.
CUT & PLUG EXIST. 8" WATER
AT EACH LOCATION
WATER STA. 9+42, 8.81' LT.
TO WATER STA. 9+48, 8.81' LT.
REMOVE 6 L.F. EXIST. 8" WATER LINE
N 8258.3783, E 9641.9217
WATER STA. 9+48
FURNISH & INSTALL:
1 - 8" GATE VALVE (S.E.)
1 - 8" TEE
1 - 8" GATE VALVE (N.W.)
20 L.F. 8" WATER LINE (N.W.)
1 - STD. FIRE HYDRANT

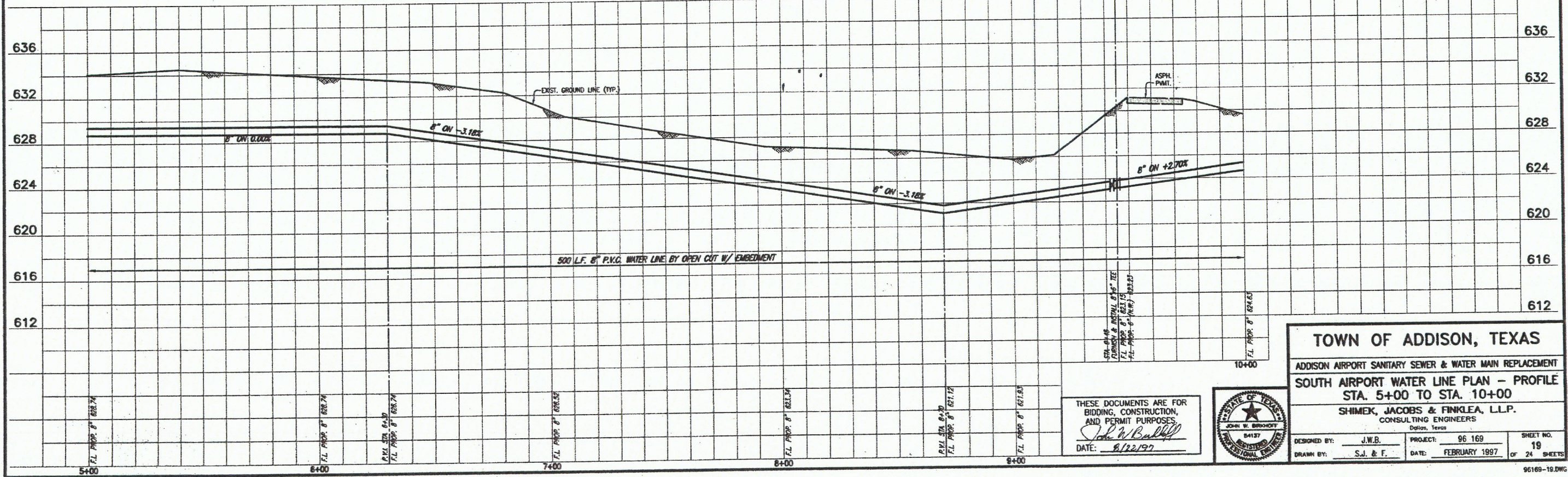
T.B.M. 4
N 10013.8786, E 10020.2823
"C" CUT IN CENTER OF CURB INLET
AT SOUTHEAST CORNER OF INTERSECTION
OF ADDISON CIRCLE AT ADDISON RD.
ELEV. 636.75

HATCHING INDICATES REMOVAL
& REPLACING OF CONCRETE
PAVEMENT (SEE PROFILE)

HATCHING INDICATES REMOVAL
& REPLACING OF ASPHALT
PAVEMENT (SEE PROFILE)



These plans and related specifications were prepared for construction of this specific project only. Reuse of these documents is not permitted without written authorization of Shimek, Jacobs & Finklea, L.L.P.



TOWN OF ADDISON, TEXAS
ADDISON AIRPORT SANITARY SEWER & WATER MAIN REPLACEMENT
SOUTH AIRPORT WATER LINE PLAN - PROFILE
STA. 5+00 TO STA. 10+00
SHIMEK, JACOBS & FINKLEA, L.L.P.
CONSULTING ENGINEERS
Dallas, Texas

DESIGNED BY: J.W.B. PROJECT: 96 169 SHEET NO. 19
DRAWN BY: S.J. & F. DATE: FEBRUARY 1997 OF 24 SHEETS

THESE DOCUMENTS ARE FOR BIDDING, CONSTRUCTION, AND PERMIT PURPOSES.
John W. Balluff
DATE: 8/22/97

STATE OF TEXAS
JOHN W. SHIMEK
REGISTERED PROFESSIONAL ENGINEER
No. 44137