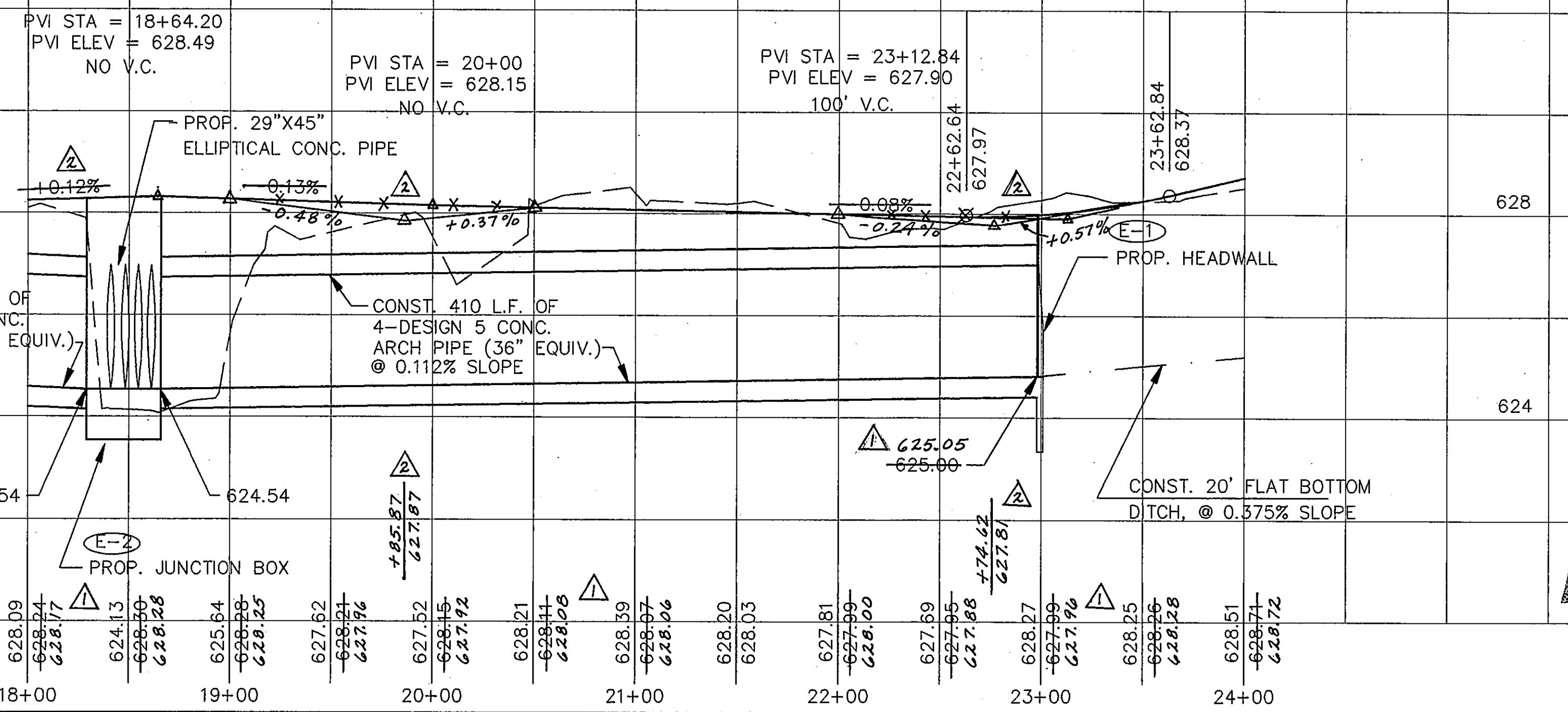


LEGEND	
PROP. TYPE "H" INLET (MOD.)	[Symbol]
EXIST. RUNWAY OR TAXIWAY LIGHT	[Symbol]
EXIST. INLET	[Symbol]
EXIST. JUNCTION BOX	[Symbol]
EXIST. ELECTRICAL VAULT	[Symbol]
EXIST. UNDERGROUND POWER	UC
EXIST. POWER POLE W/ GUY WIRE	[Symbol]

E-2 STA. 18+50.94, 36.62' LT.  
CONSTRUCT JUNCTION BOX  
SEE SHEETS 20, 21 & 22 FOR DETAILS  
FL EL. = 624.54

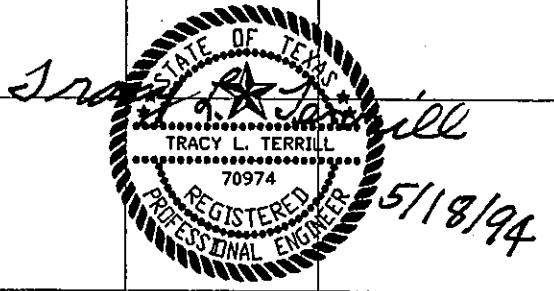


E-1 STA. 22+97.73, 55.35' LT.  
CONSTRUCT TYPE B HEADWALL (MOD.)  
SEE SHEET 26 FOR DETAILS  
FL EL. = 625.00

NOTE: EXTEND 4-29"X45" CONC. ELLIPTICAL PIPE 42' LT. IF TONGUE AND GROOVE NOT AVAILABLE, CONSTRUCT CONC. PIPE COLLAR TO CONNECT EXTENSION TO EXISTING PIPES. REMOVAL OF EXISTING HEADWALL WILL NOT BE PAID FOR DIRECTLY, BUT WILL BE CONSIDERED SUBSIDIARY TO THE ELLIPTICAL PIPE.

**AS BUILT**

OCT 20 1995



DESIGN: T.L.T.	A.I.P. NO. 3-48-0063-06	4-20-95	MS-BUILT CHANGES	JRH
DRAWN: M.J.C.	BID NO. 94-33	11-21-98	FIELD CHANGE, CONC. FLUME	JRH
CHECKED: L.D.T.	JOB NO. Y8024.60	Date	Revisions	By
SCALE:				

**Greiner, Inc.**  
Engineers, Architects and Planners  
Greiner, Inc.  
Fort Worth, Texas

**ADDISON AIRPORT**

**NEW SERVICE RD. & DRAINAGE IMPROVEMENTS**  
STA. 18+00 TO STA. 24+00

SHEET 12  
DATE: MAY, 1994